



MIDWEST SURVEYS
 LOGGING - PERFORATING - CONSULTING SERVICES
 P.O. Box 68, Osawatomie, KS 66064
 913 / 756 - 2128

GAMMA RAY / NEUTRON / CCL

File No: Company: **Coit Energy, Inc.**

Well: **Lauber No - 42**

Field: **Big Sandy**

County: **Woodson** State: **Kansas**

Location: **3026 F.S.L. & 898th FEL**

Other Services: **Perforate**

Date: **10-22-2018**

Run Number: **151410**

Depth Logger: **147112**

Bottom Logged Interval: **147012**

Top Logged Interval: **20.0**

Fluid Level: **Full**

Type Fluid: **Water**

Density / Viscosity: **NA**

Stability / PH / O: **NA**

Max Recorded Temp: **NA**

Estimated Cement Top: **0.0**

Equipment No: **UJ7** Location: **Osawatomie**

Recorded By: **Steve Winters**

Witnessed By: **Jim Ahrens**

BIT	FROM	TO	SIZE	WST	FROM	TO
12.25"	0.0	40.0	8.625"	2.10	0.0	40.0
6.75"	40.0	1514.0	4.50"	16.5	0.0	147.15

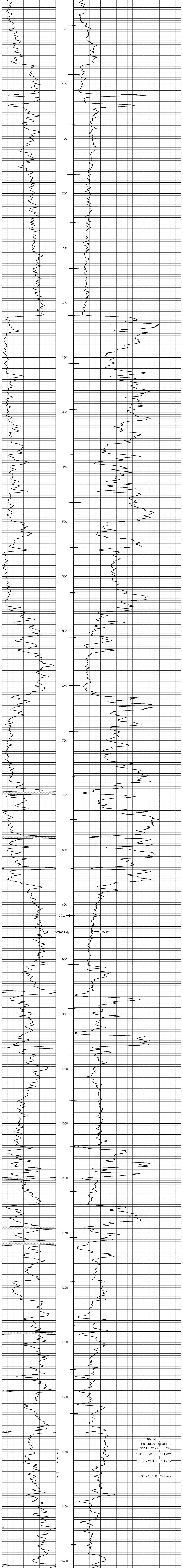
<< Fold Here >>

All interpretations are opinions based on inferences from electrical or other measurements and we cannot and do not guarantee the accuracy or correctness of any interpretation, and we shall not, except in the case of gross or willful negligence on our part, be liable or responsible for any loss, costs, damages, or expenses incurred or sustained by anyone resulting from any interpretation made by any of our officers, agents or employees. These interpretations are also subject to our general terms and conditions set out in our current Price Schedule.

Comments

Drilling Contractor :
Bar Drilling, LLC.

Database File: lauber 42.db
 Dataset Pathname: 1368
 Presentation Format: gr-n-ccl
 Dataset Creation: Mon Oct 22 09:49:29 2018 by Log SCH 111116
 Charted by: Depth in Feet scaled 1:240



10-22-2018
 Perforated Intervals
 3 3/8" DP 21 Gr. T. EOG
 1348.0 - 1352.0 17 Perfs
 1355.0 - 1361.0 25 Perfs
 1369.0 - 1376.0 29 Perfs