



**GAMMA RAY  
CCL  
CEMENT BOND  
LOG**

**Company** WAR HORSE  
**Well** EDWARDS # 1  
**Field**  
**County** GREENWOOD **State** KANSAS

**Company** WAR HORSE  
**Well** EDWARDS # 1  
**Field**  
**County** GREENWOOD  
**State** KANSAS

|                        |                |                       |
|------------------------|----------------|-----------------------|
| <b>Location:</b>       | <b>APL # :</b> | <b>Other Services</b> |
| SEC                    | TWP            | RGE                   |
| Permanent Datum        | GL             | Elevation ---         |
| Log Measured From      | GL             | K.B. ---              |
| Drilling Measured From | GL             | D.F. ---              |
|                        |                | G.L. ---              |

**Date** 11-2-2020

**Run Number** ONE

**Depth Driller** ---

**Depth Logger** 1975'

**Bottom Logged Interval** 1973'

**Top Log Interval** SURFACE

**Open Hole Size** ---

**Type Fluid** WATER

**Density / Viscosity** ---

**Max. Recorded Temp.** ---

**Estimated Cement Top** 230'

**Time Well Ready** ON ARRIVAL

**Time Logger on Bottom** 10:00 AM

**Equipment Number** OW3

**Location** HOMINY, OKLAHOMA

**Recorded By** B. MARSHALL

**Witnessed By** MR. MCCOY

**R. KIDD / K. HENSLEY**

**T. FERGUSON**

| Run Number | Borehole Record |      | Tubing Record |      |        |      |    |
|------------|-----------------|------|---------------|------|--------|------|----|
|            | Bit             | From | To            | Size | Weight | From | To |
|            |                 |      |               |      |        |      |    |
|            |                 |      |               |      |        |      |    |
|            |                 |      |               |      |        |      |    |

**Casing Record**

|                   |        |        |     |        |
|-------------------|--------|--------|-----|--------|
| Surface String    | Size   | Wgt/Ft | Top | Bottom |
| Prot. String      |        |        |     |        |
| Production String | 2 7/8" |        |     |        |
| Liner             |        |        |     |        |

<<< Fold Here >>>

All interpretations are opinions based on inferences from electrical or other measurements and we cannot and do not guarantee the accuracy or correctness of any interpretation, and we shall not, except in the case of gross or willful negligence on our part, be liable or responsible for any loss, costs, damages, or expenses incurred or sustained by anyone resulting from any interpretation made by any of our officers, agents or employees. These interpretations are also subject to our general terms and conditions set out in our current Price Schedule.

**Comments**

FILE #5563-OW3CBL WAR HORSE EDWARDS # 1  
 THANK YOU FOR USING OSAGE WIRELINE!

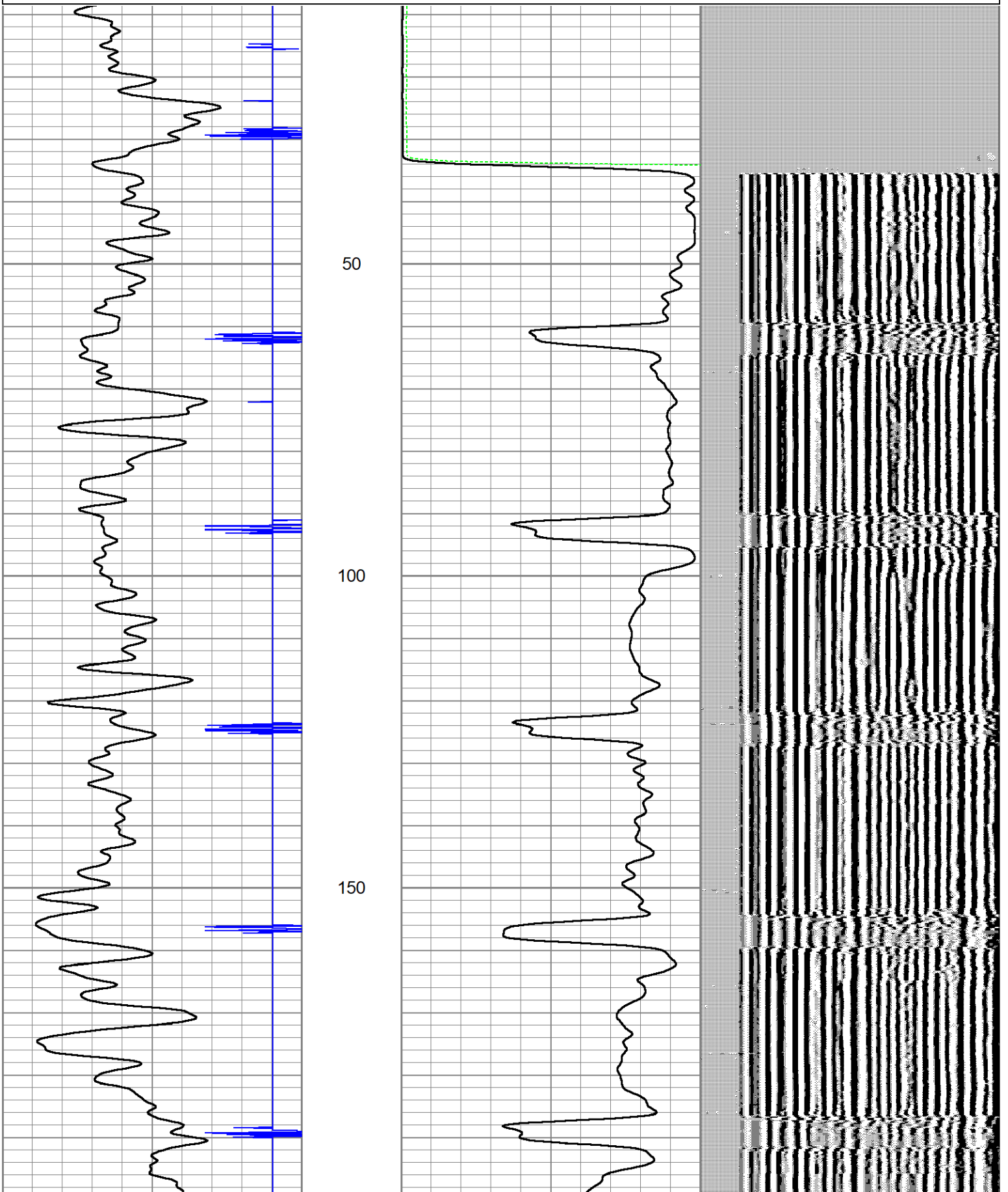


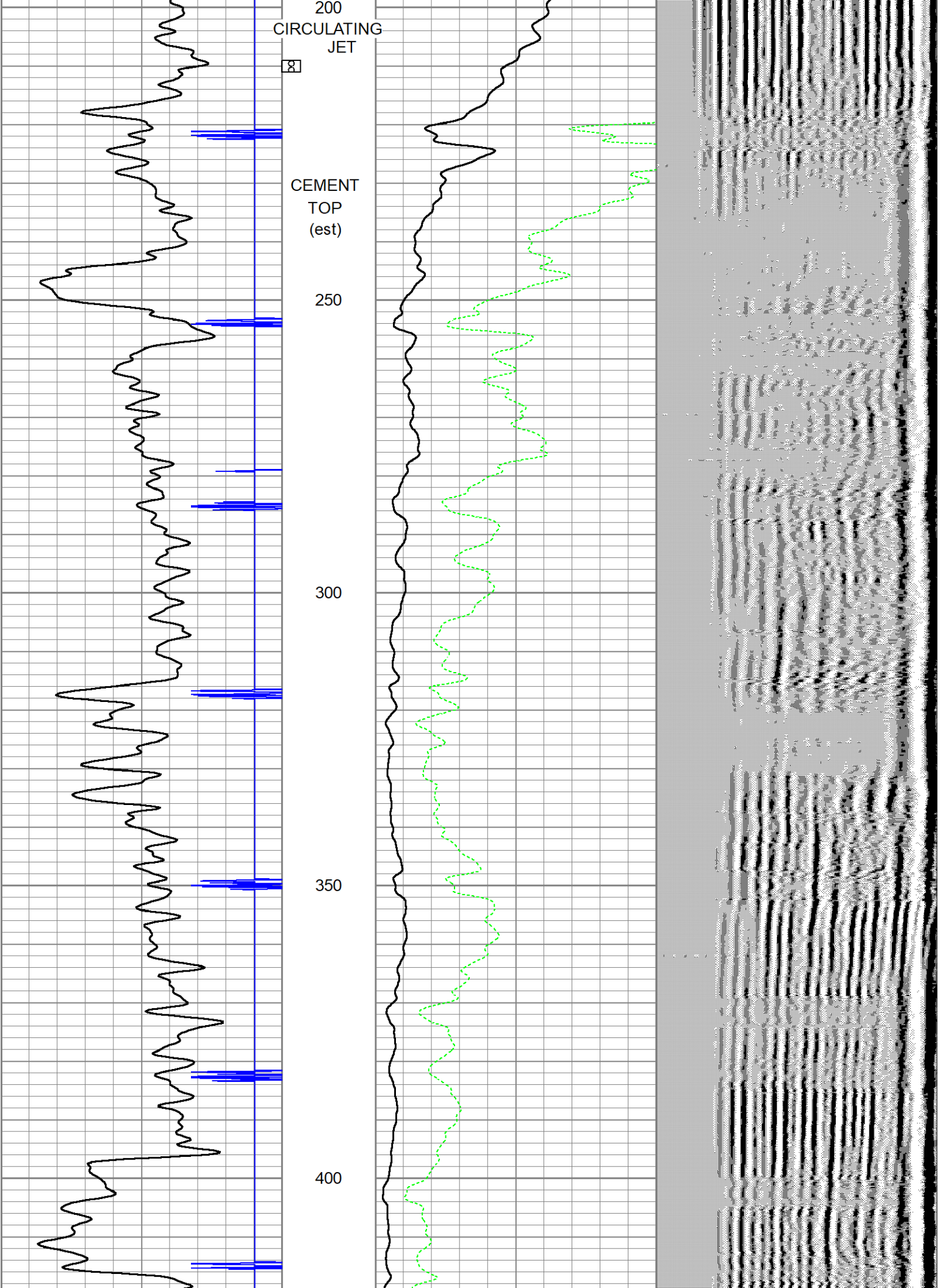
**GR/CCL/CBL**

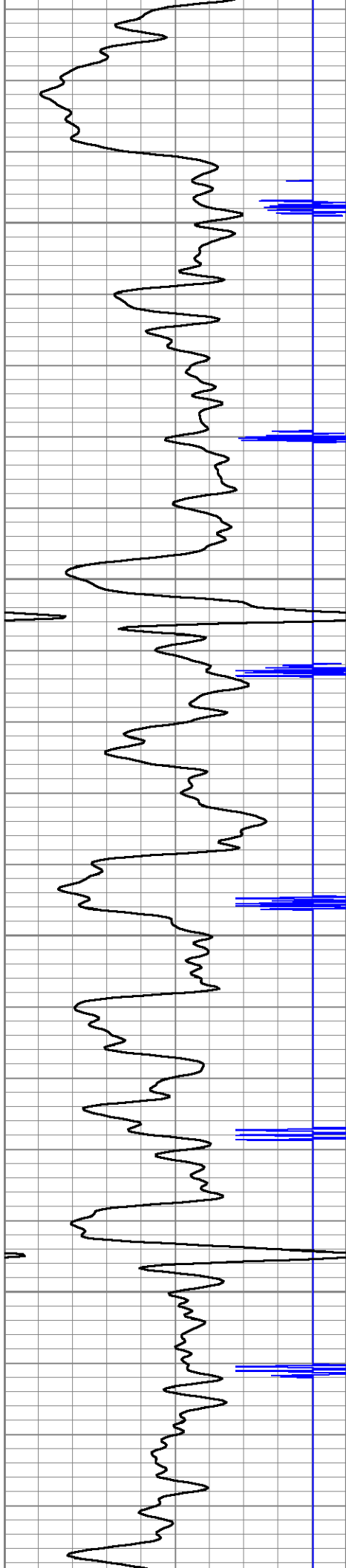
Database File 5563-ow3cbl war horse.db  
Dataset Pathname pass1  
Presentation Format scbl\_dr  
Dataset Creation Mon Nov 02 10:48:59 2020  
Charted by Depth in Feet scaled 1:240

|    |                  |       |
|----|------------------|-------|
| 40 | Collar Locator   | -4.25 |
| 0  | Gamma Ray (GAPI) | 150   |

|   |                |     |     |            |      |
|---|----------------|-----|-----|------------|------|
| 0 | Amplitude (mV) | 156 | 200 | VDL (usec) | 1200 |
|---|----------------|-----|-----|------------|------|





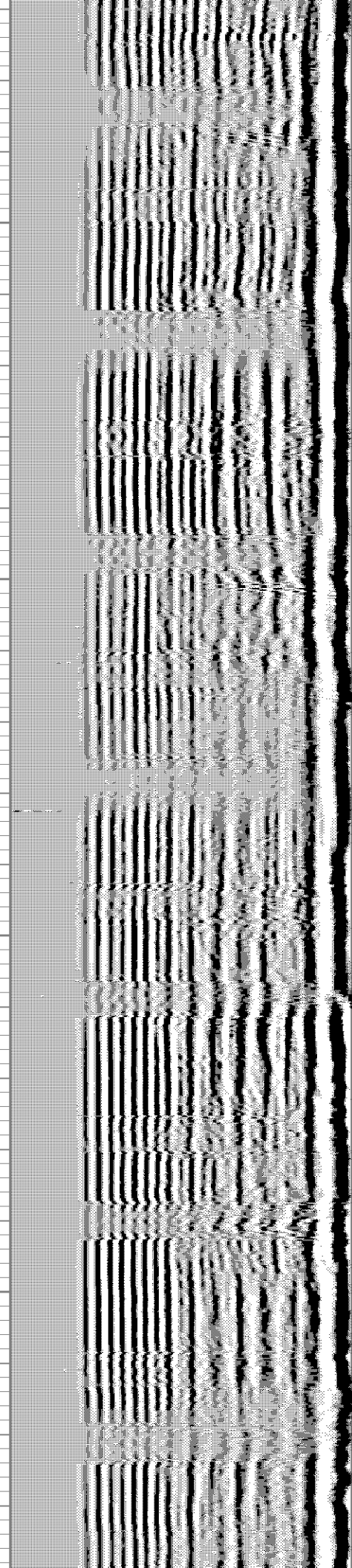
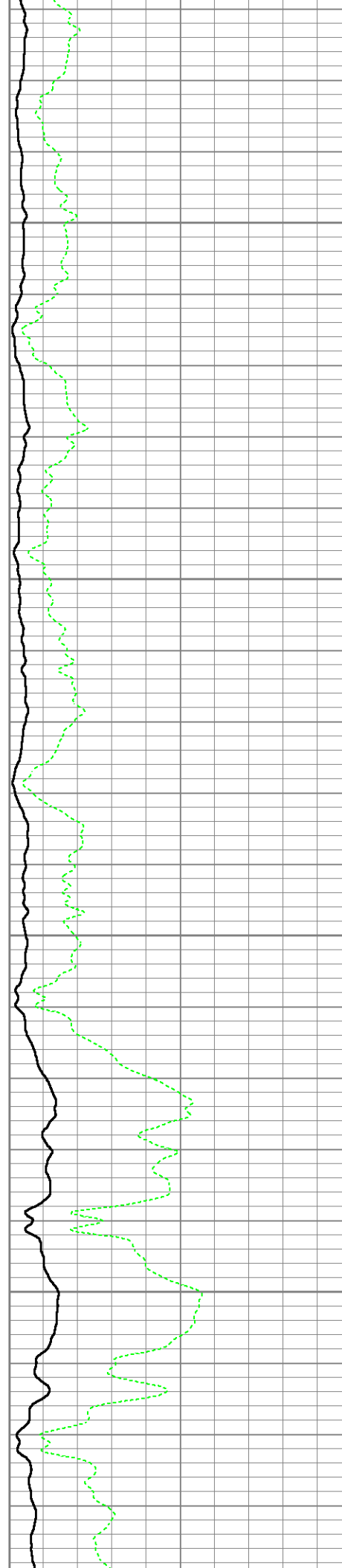


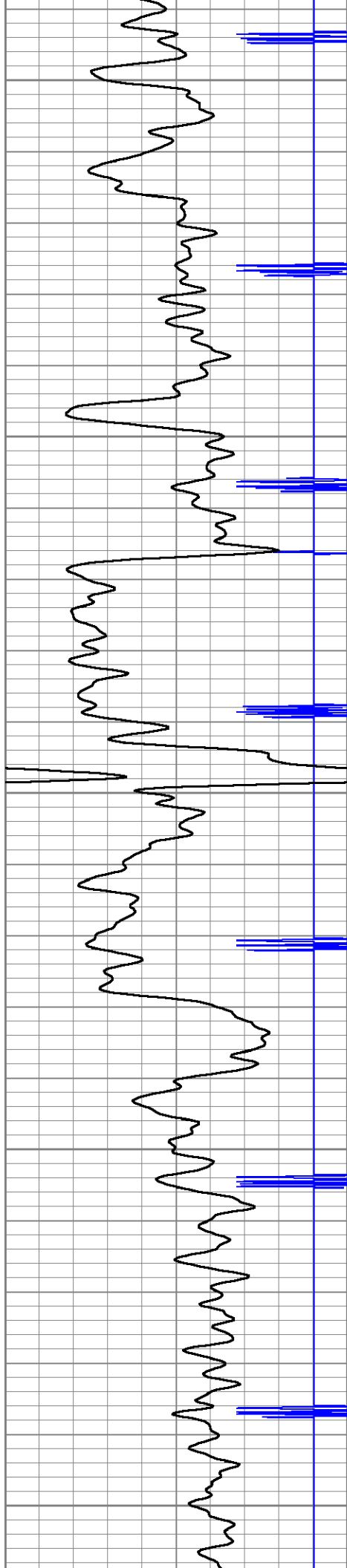
450

500

550

600





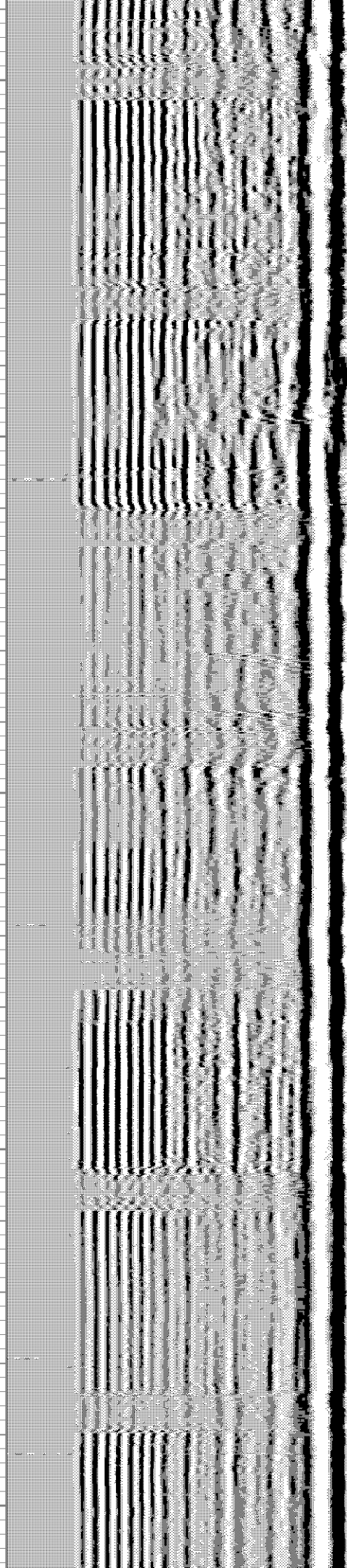
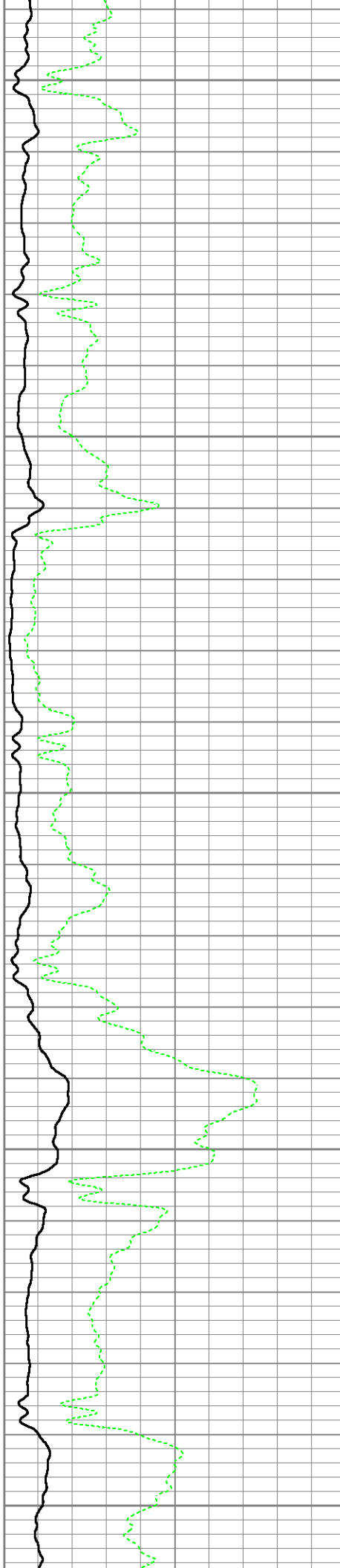
650

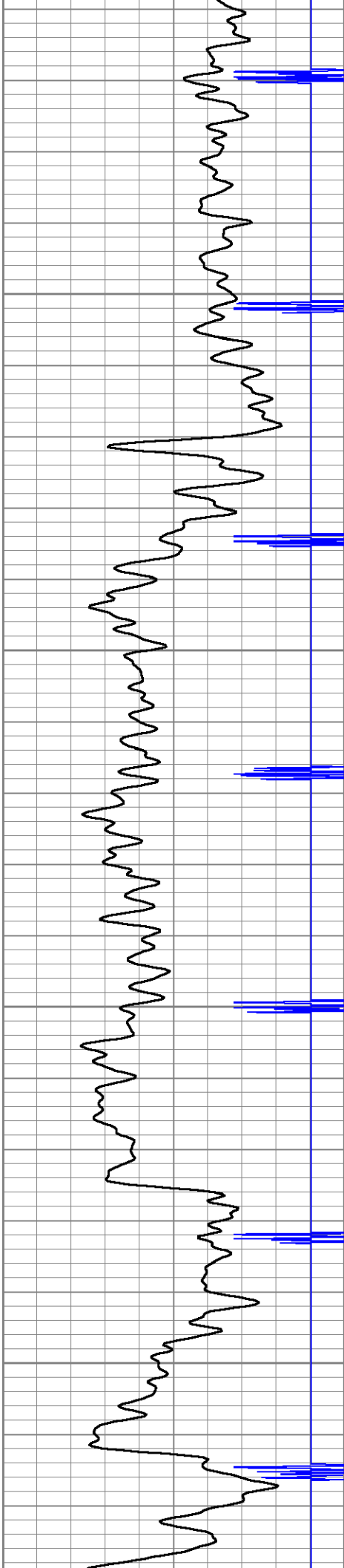
700

750

800

850



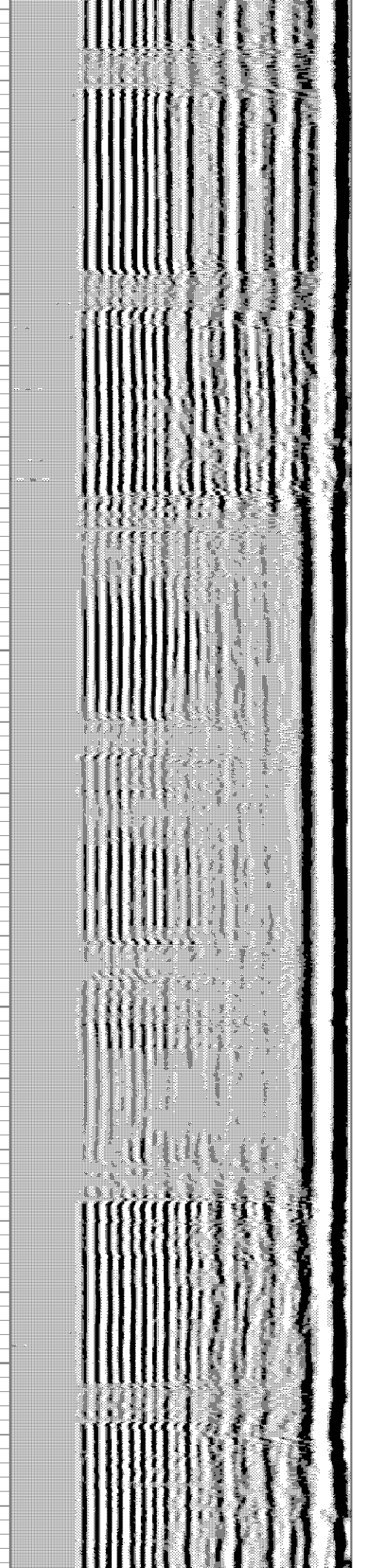
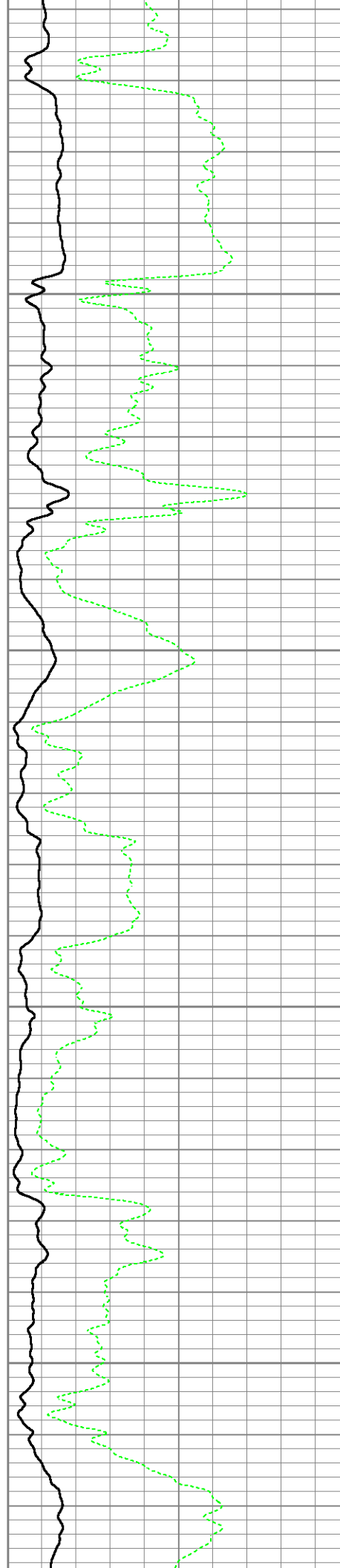


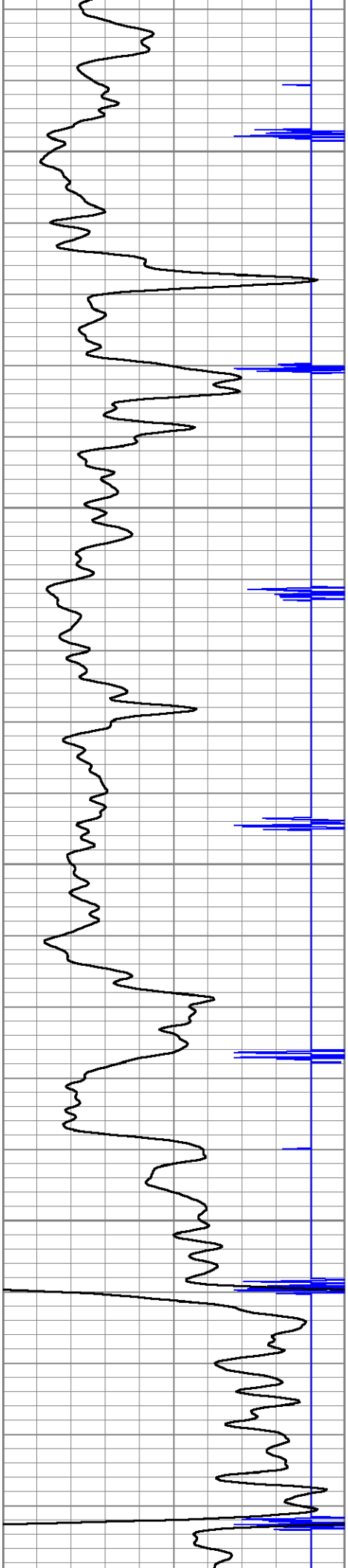
900

950

1000

1050



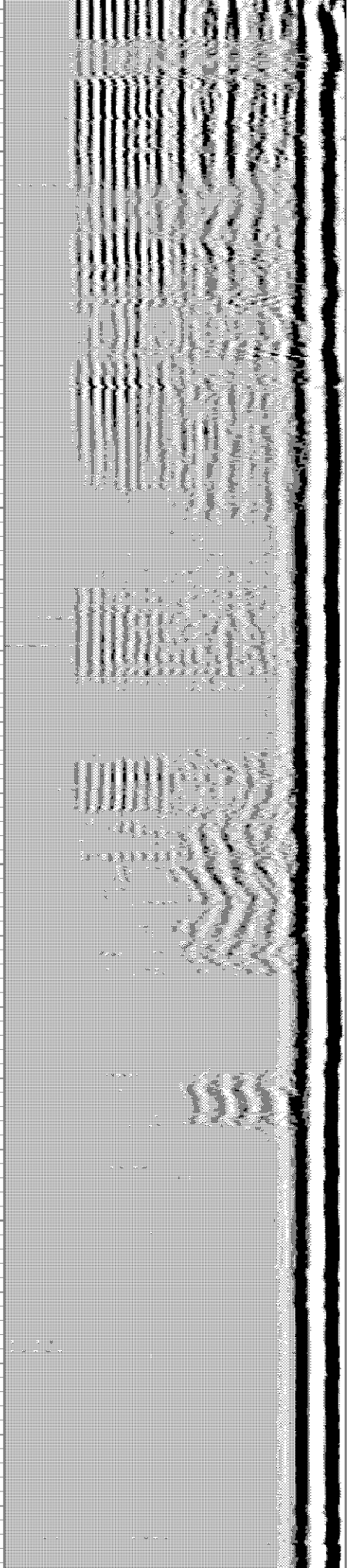
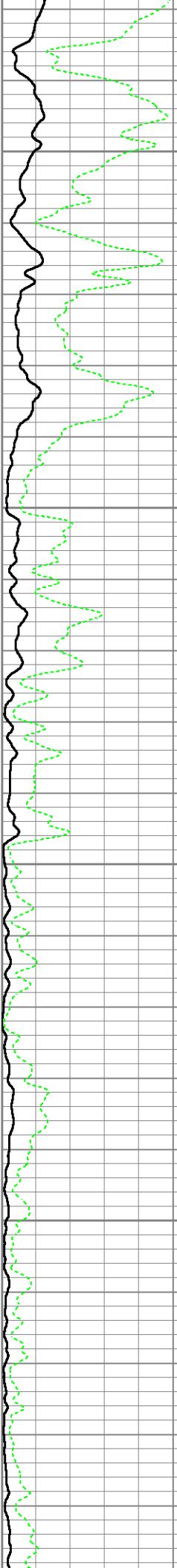


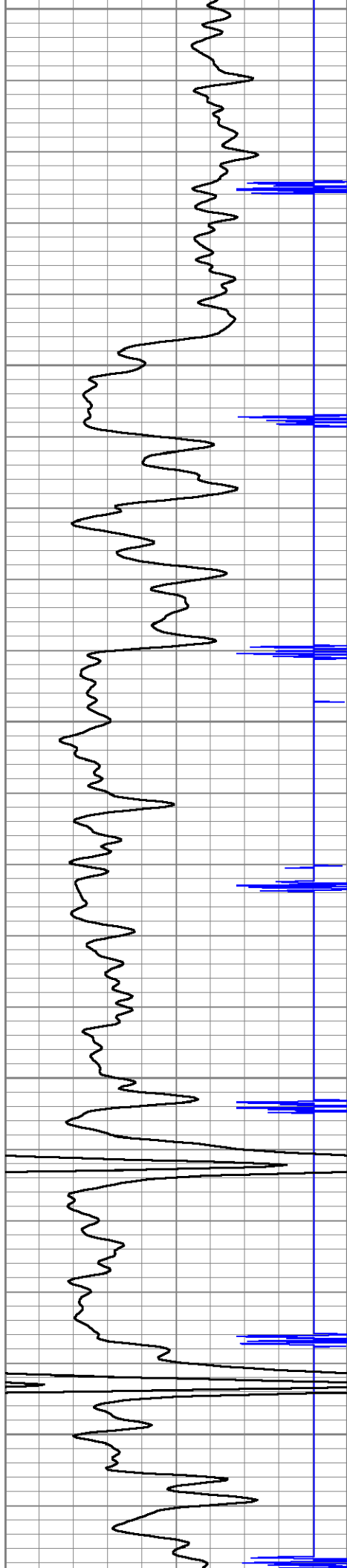
1100

1150

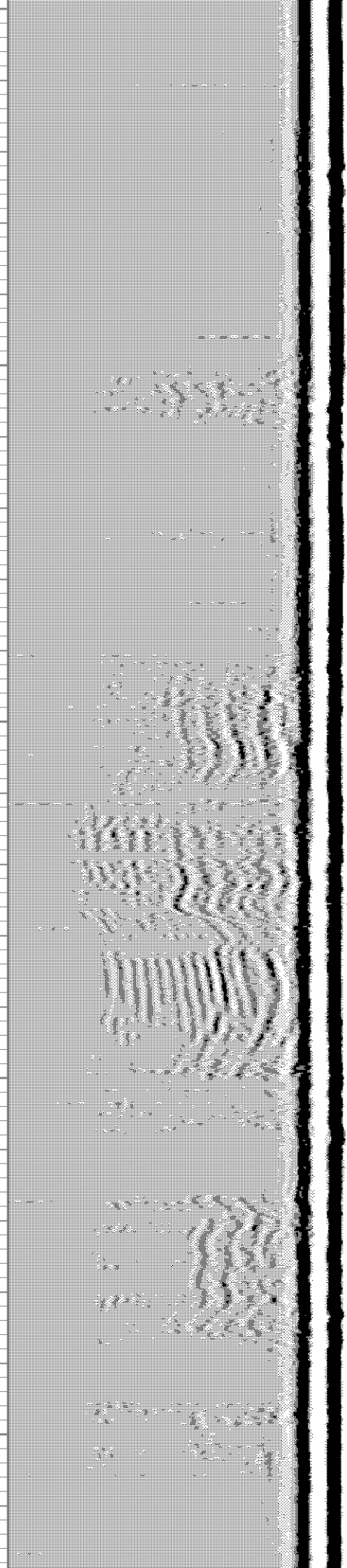
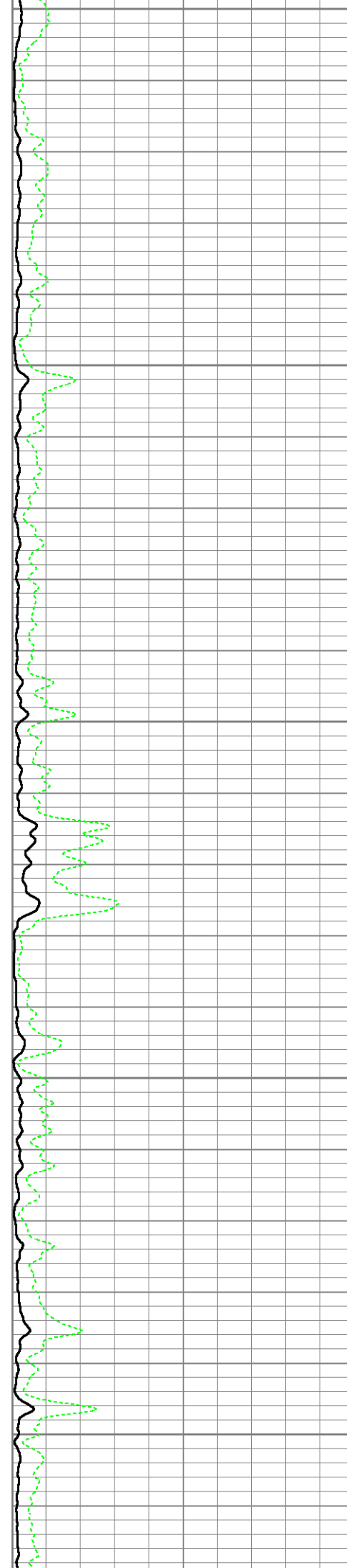
1200

1250

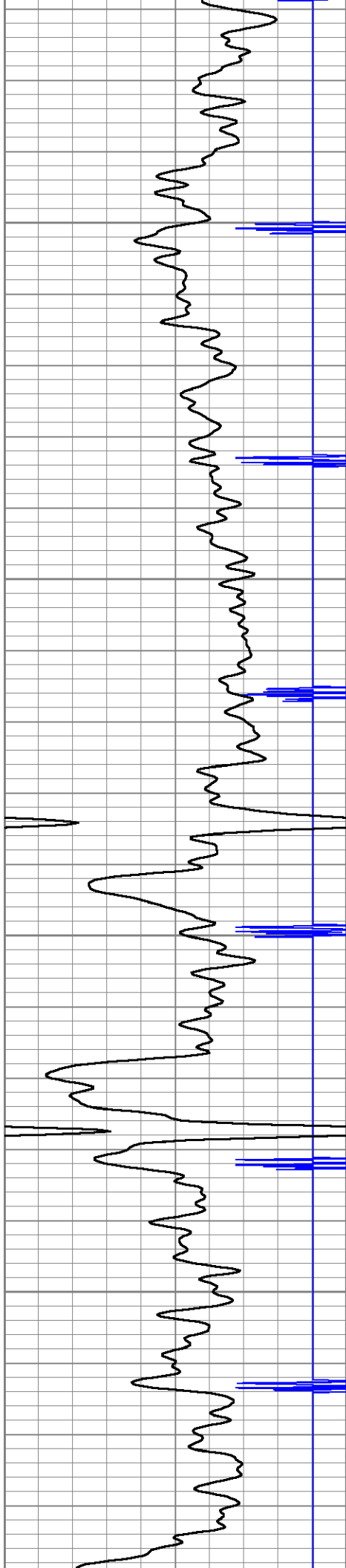




1300  
1350  
1400  
1450  
1500





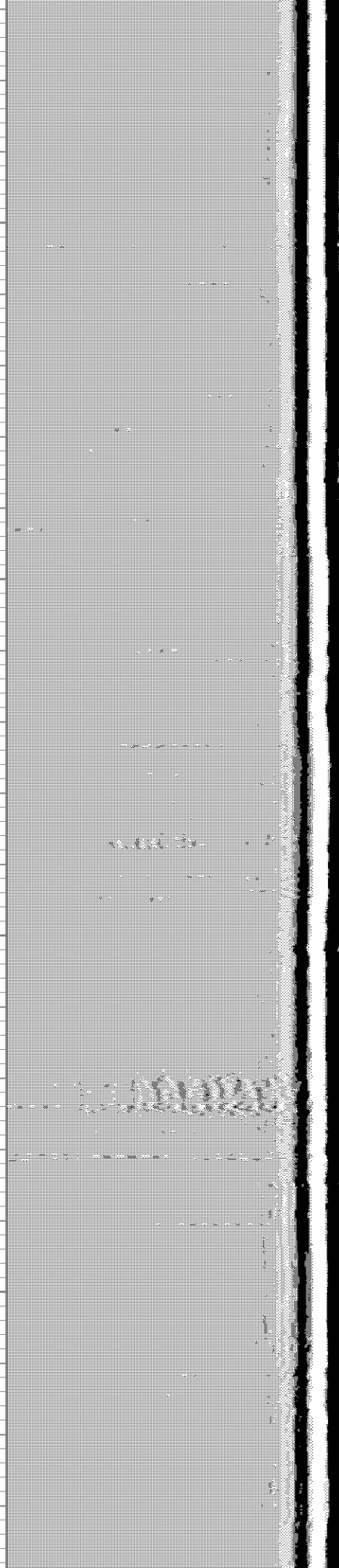
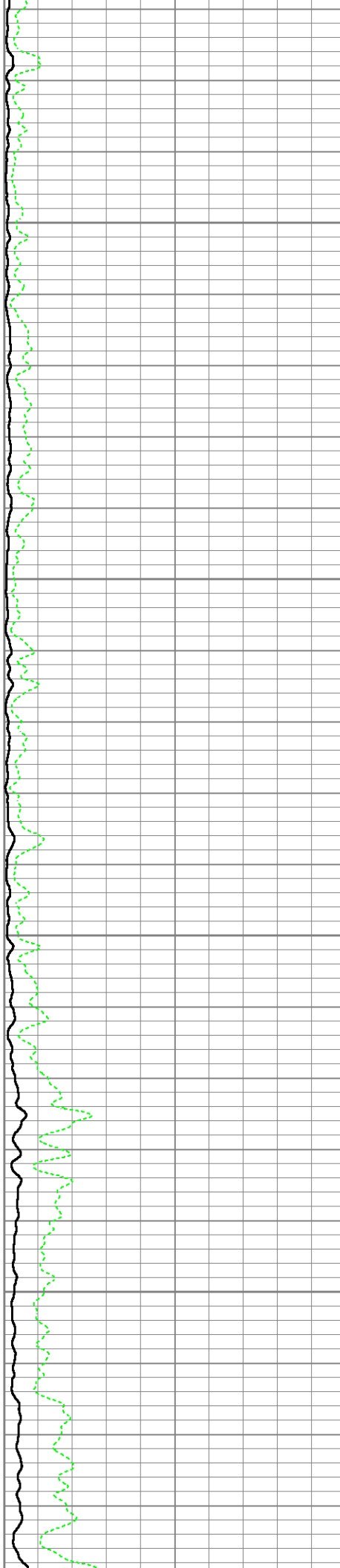


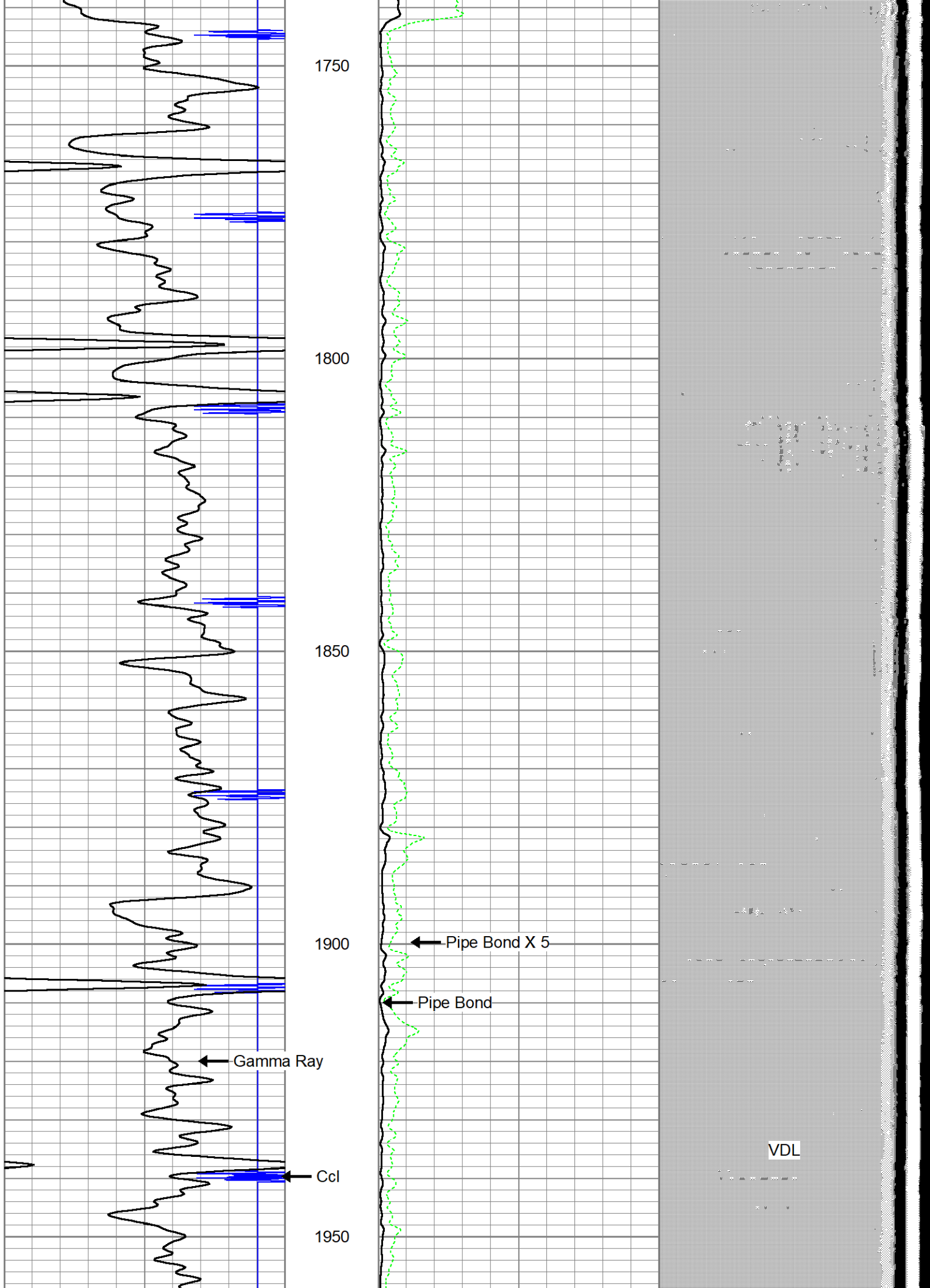
1550

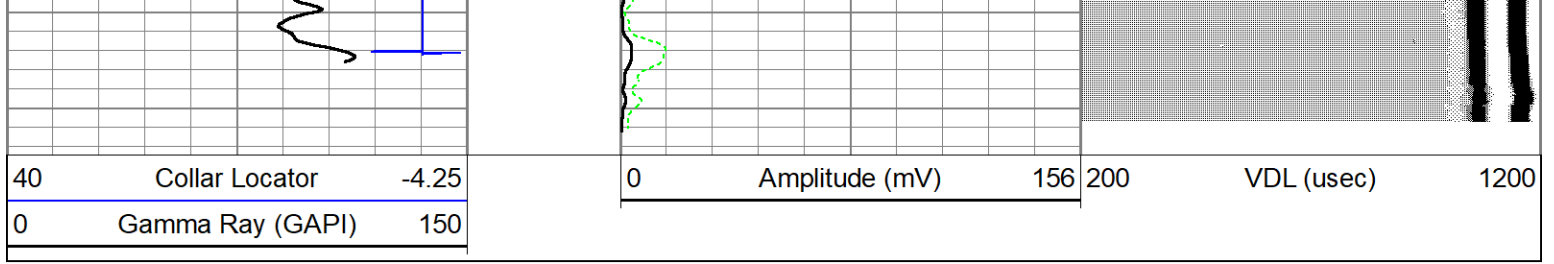
1600

1650

1700







| Sensor   | Offset (ft) | Schematic | Description  | Length (ft) | O.D. (in) | Weight (lb) |
|----------|-------------|-----------|--|-------------|-----------|-------------|
| CHD      | 12.33       |           | CHD-STNDRD<br>Standard Cable Head                        | 1.00        | 1.69      | 10.00       |
| CBLPROBE | 11.33       |           |  |             |           |             |
| CCL      | 10.33       |           |  |             |           |             |
| GR       | 7.42        |           | CBLPROBE-PRB169SLIM (000908)<br>PROBE 1 11/16 GR/CCL/CBL | 11.33       | 1.69      | 20.00       |
| WVF3FT   | 4.50        |           |  |             |           |             |
| WVF5FT   | 3.58        |           |  |             |           |             |
| WVFSYNC  | 0.00        |           |  |             |           |             |

Dataset: 5563-ow3cbl war horse.db: field/well/run1/pass1  
 Total length: 12.33 ft  
 Total weight: 30.00 lb  
 O.D.: 1.69 in