



LITHO DENSITY  
NEUTRON  
LOG

Company Palomino Petroleum, Inc.  
Well Dirks #1  
Field Wildcat  
County Logan  
State Kansas

Company Palomino Petroleum, Inc.  
Well Dirks #1  
Field Wildcat  
County Logan State Kansas

Location: API #: 15 109 21557  
2474' FSL & 614' FEL  
SEC 25 TWP 15S RGE 36W  
Permanent Datum Ground Level Elevation 3259'  
Log Measured From KB 8' AGL  
Drilling Measured From KB  
Other Services  
DIL  
ML  
BCS  
Elevation  
K.B. 3267'  
D.F. 3266'  
G.L. 3259'

Date	7-18-18
Run Number	One
Depth Driller	4955'
Depth Logger	4953'
Bottom Logged Interval	4931'
Top Log Interval	300'
Casing Driller	8 5/8" @ 220'
Casing Logger	220'
Bit Size	7 7/8"
Type Fluid in Hole	Chemical
Density / Viscosity	9.1/68
PH / Fluid Loss	9.0/11.2
Source of Sample	Pit
Rm @ Meas. Temp	0.55@81degf
Rmf @ Meas. Temp	0.44@81degf
Rmc @ Meas. Temp	0.70@81degf
Source of Rmf / Rmc	Calculated
Rm @ BHT	0.37@120degf
Time Circulation Stopped	5:15 a.m
Time Logger on Bottom	8:50 a.m
Maximum Recorded Temperature	120degf
Equipment Number	T-127
Location	Hays, KS
Recorded By	C.Patterson
Witnessed By	Mr. Andrew Stenzel

<<< Fold Here >>>

All interpretations are opinions based on inferences from electrical or other measurements and we cannot and do not guarantee the accuracy or correctness of any interpretation, and we shall not, except in the case of gross or willful negligence on our part, be liable or responsible for any loss, costs, damages, or expenses incurred or sustained by anyone resulting from any interpretation made by any of our officers, agents or employees. These interpretations are also subject to our general terms and conditions set out in our current Price Schedule.

Comments

From KS-4 North of Scott City, Go North on Hwy 83 1.7 mi to KS-95, Turn West on KS-95 go 2.2 mi. West to North on KS-95 to W Rd. 270( turns to D Rd. On County line)  
Then Go West on W Rd 270(County D RD/ PENCE Road) for 17 mi. To Marienthal Rd.(20 Rd.)  
Then go 5.3 mi. North to West on Marienthal Rd.(20 Rd.West at correction curve) to 220 Rd.,  
Then Go North on 220 Rd 1.5 mi., West into Location

Thanks for using Gemini Wireline LLC  
785-625-1182

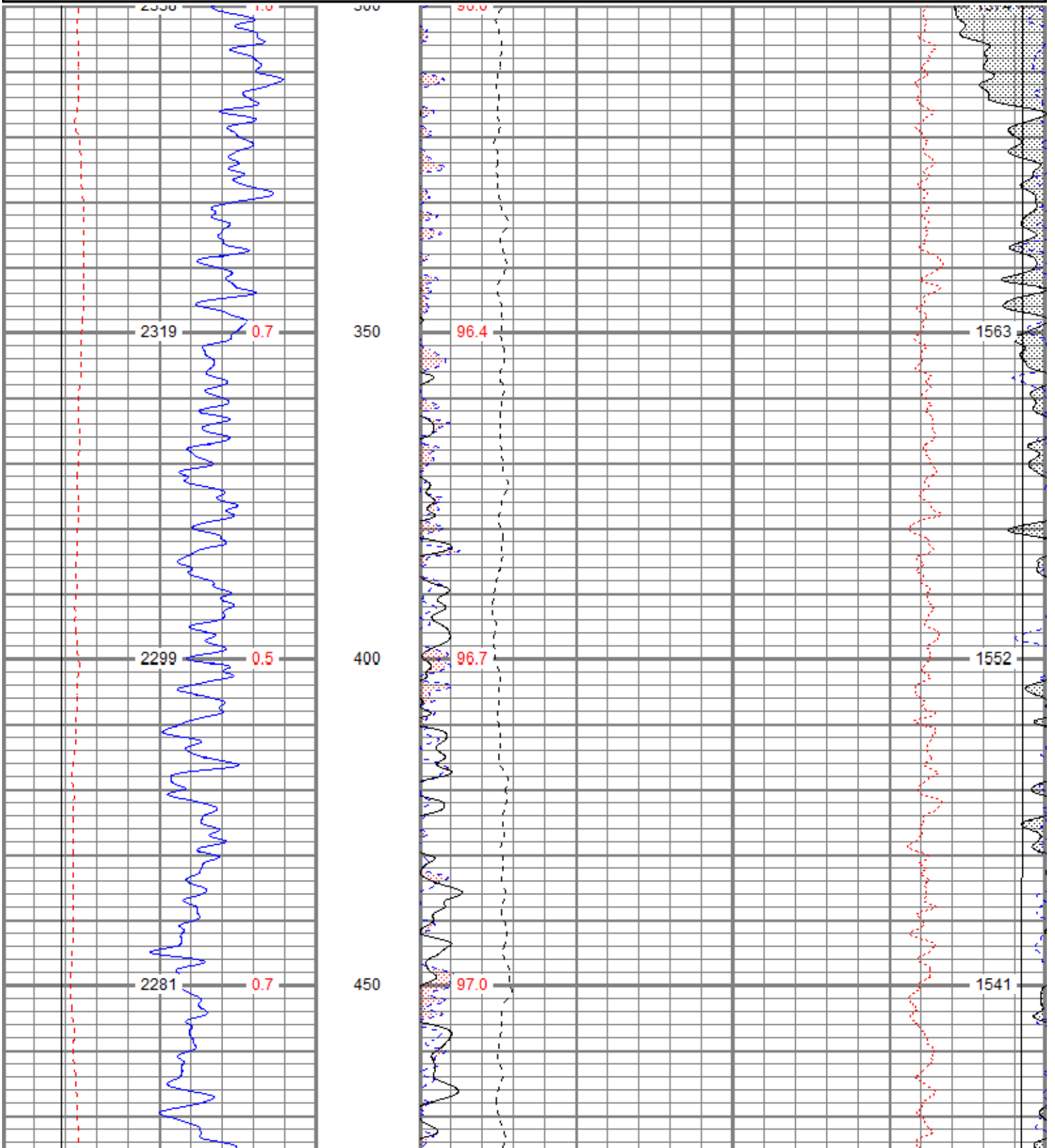


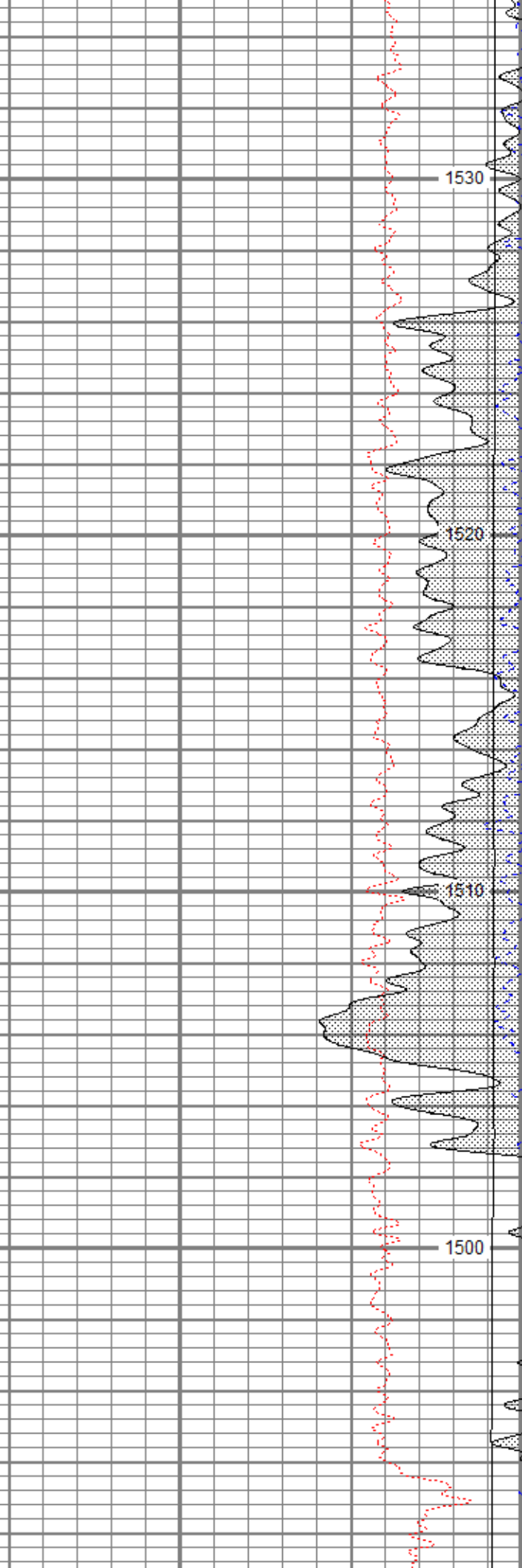
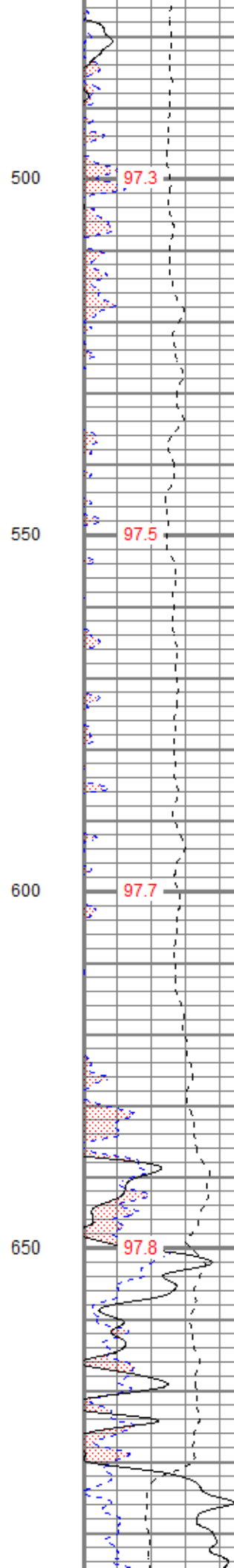
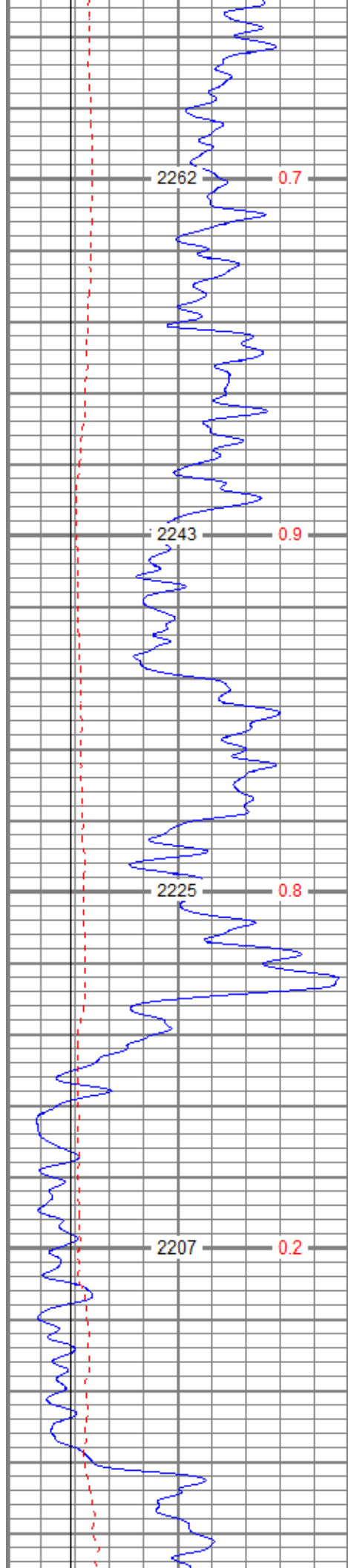
MAIN PASS

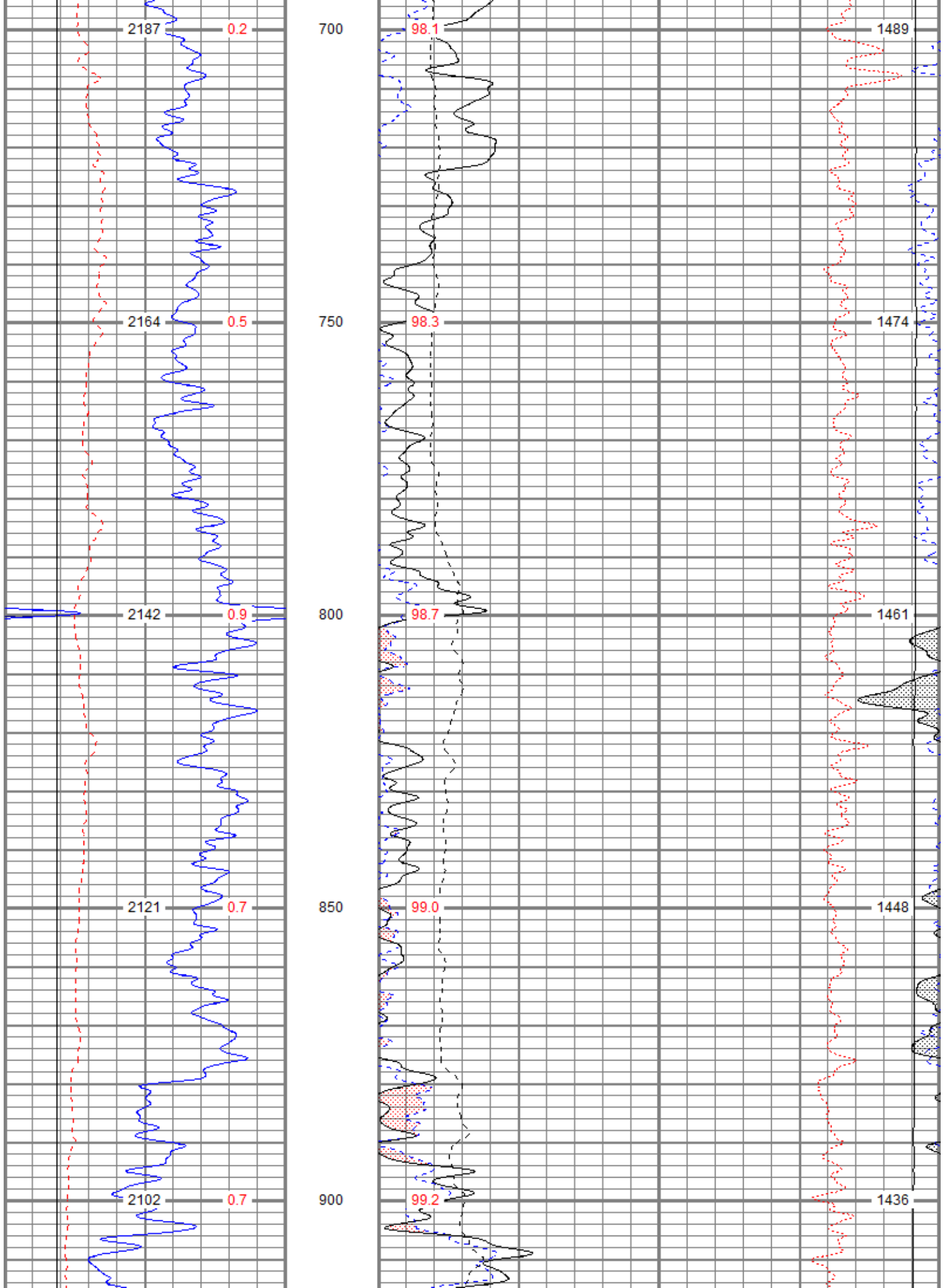
Database File ppdirks#1oh.db  
 Dataset Pathname pass3.2  
 Presentation Format digital\_kcdnl  
 Dataset Creation Wed Jul 18 15:07:10 2018  
 Charted by Depth in Feet scaled 1:240

0	GR (GAPI)	150
6	DCAL (in)	16
6	BOREID (in)	16
	TBHV (ft3)	DEVI (deg)

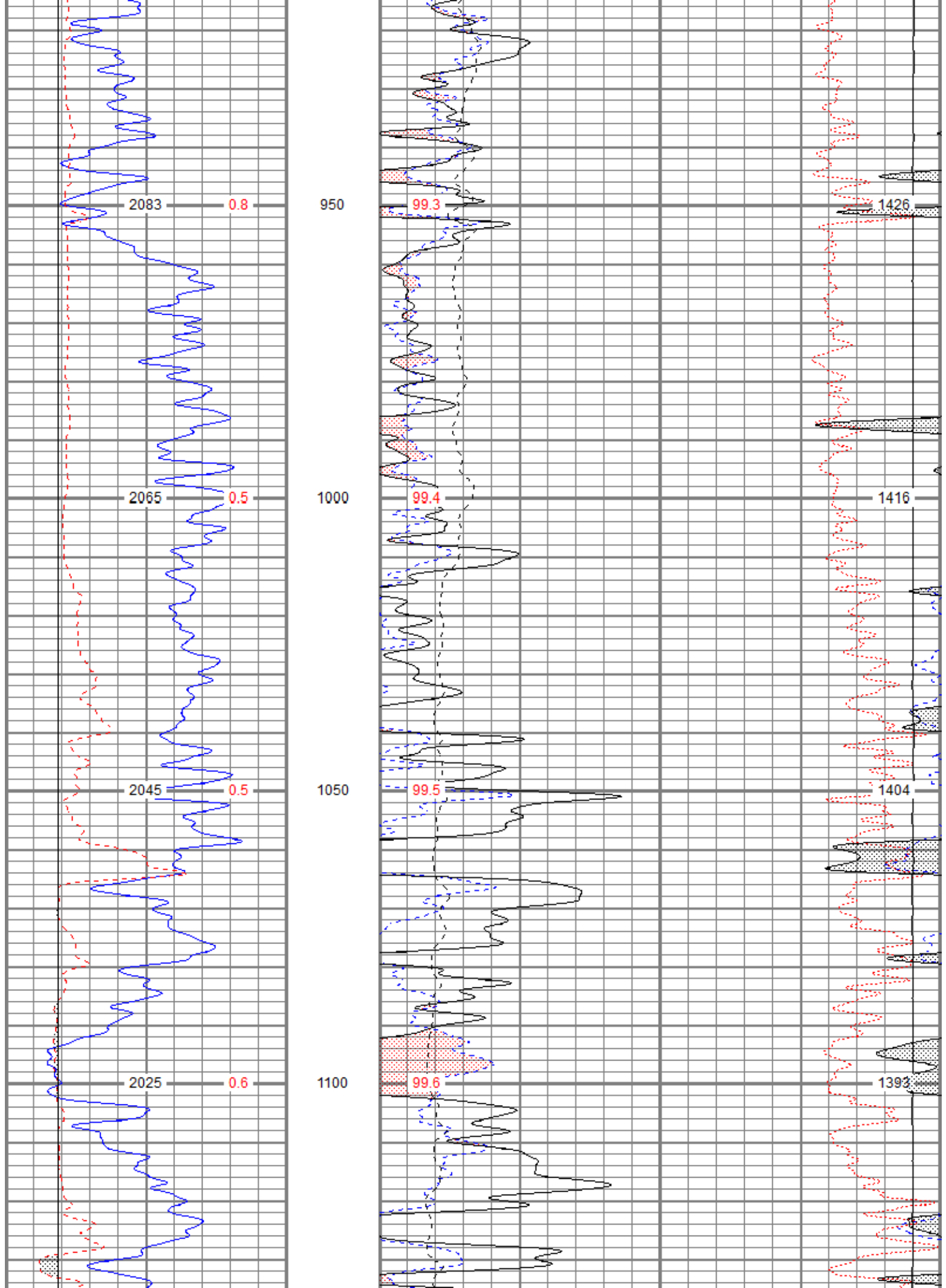
30	NPOR (pu)	-10			
30	DPOR (pu)	-10			
70	DPOR (pu)	30			
0	Pe (barn)	10	-0.25	RHOC (g/cc)	0.25
TEMP (degF)	8000	LTEN (lb)	0	ABHV (ft3)	

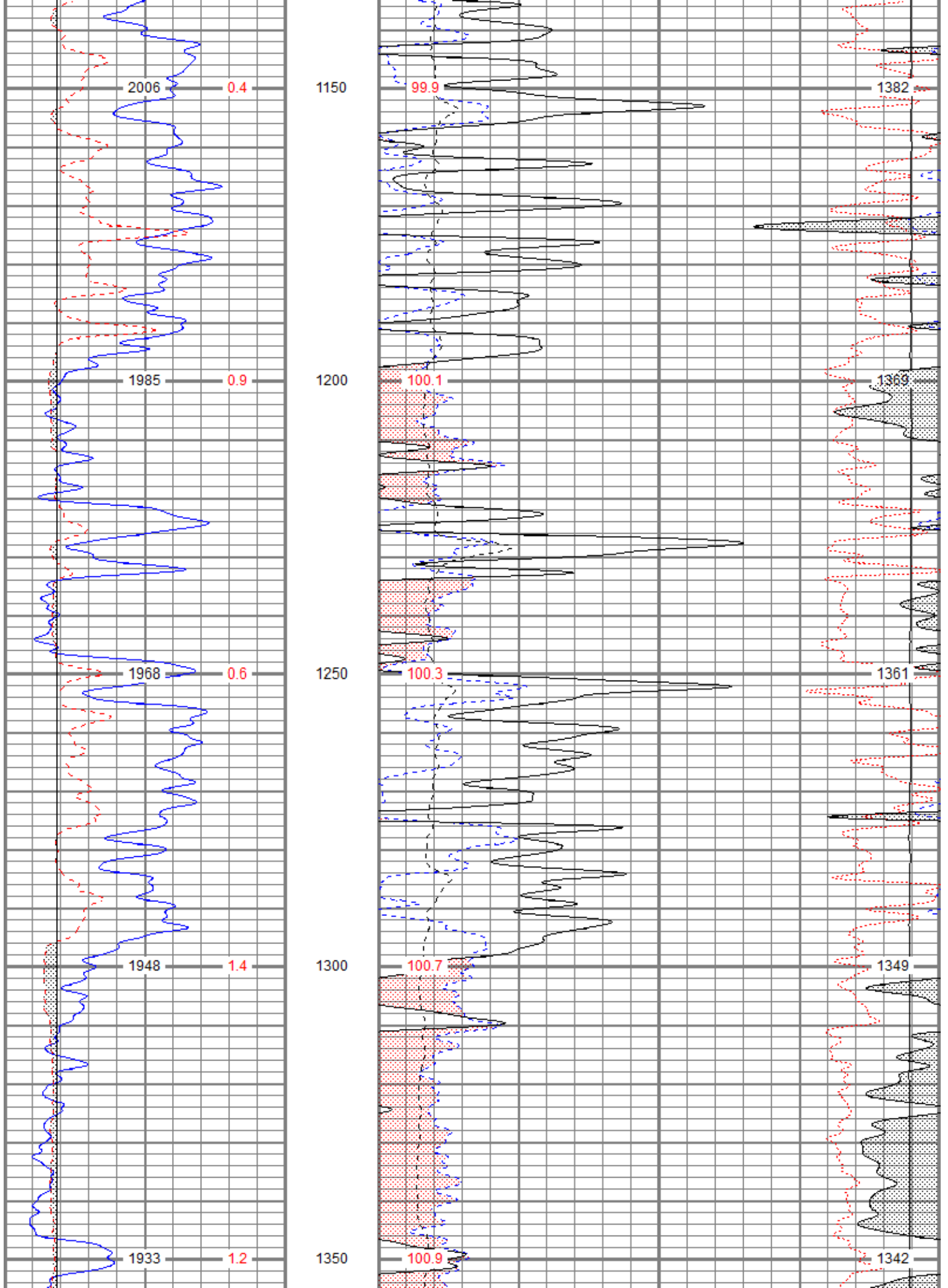


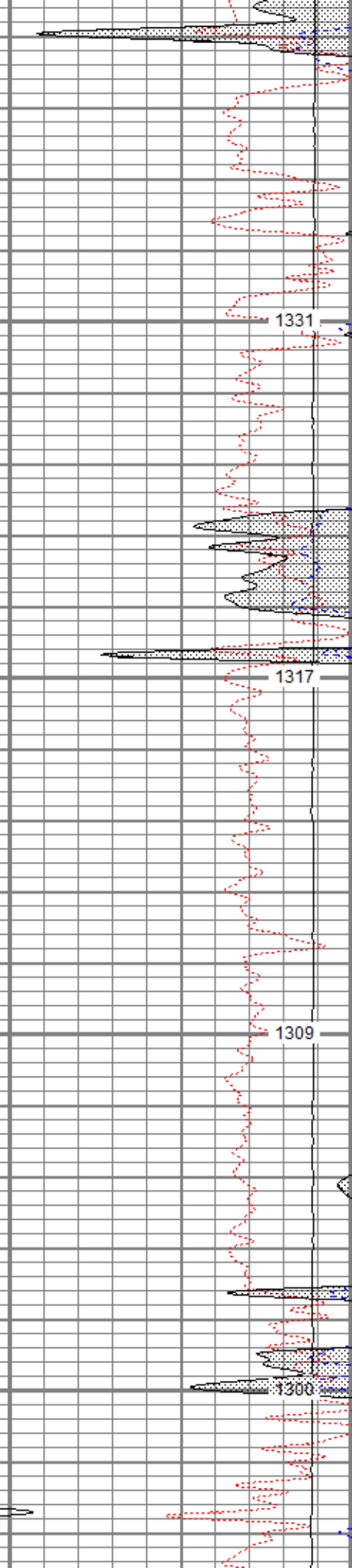
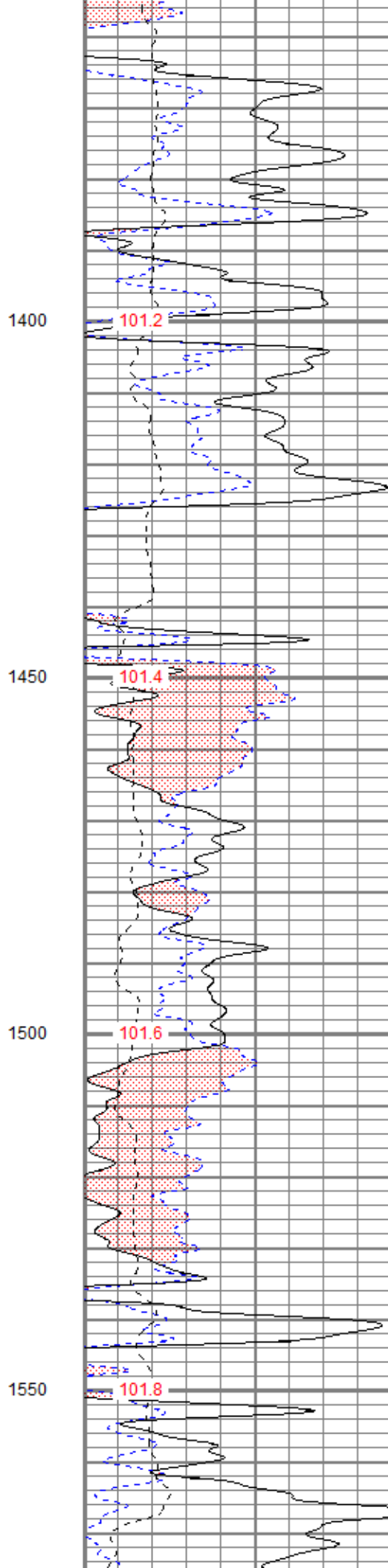
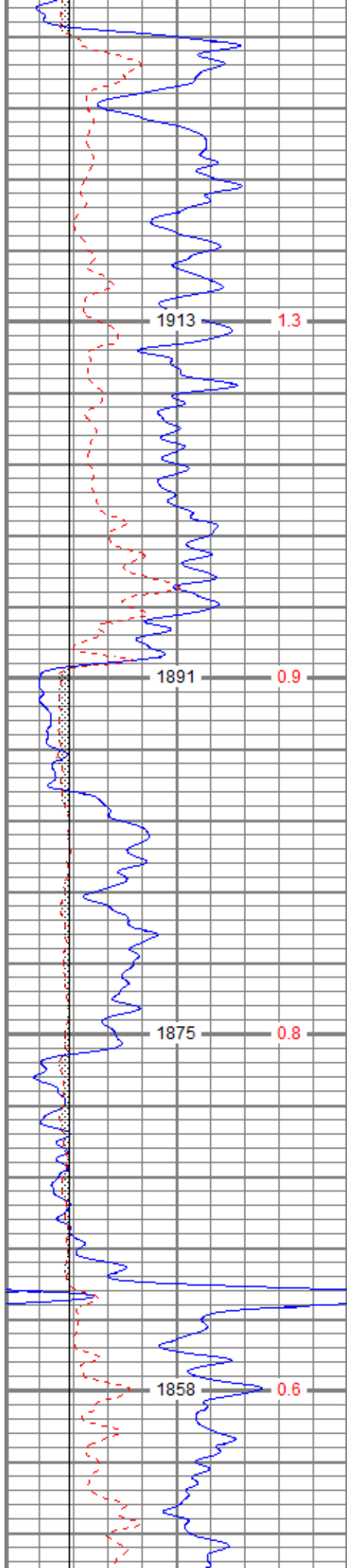


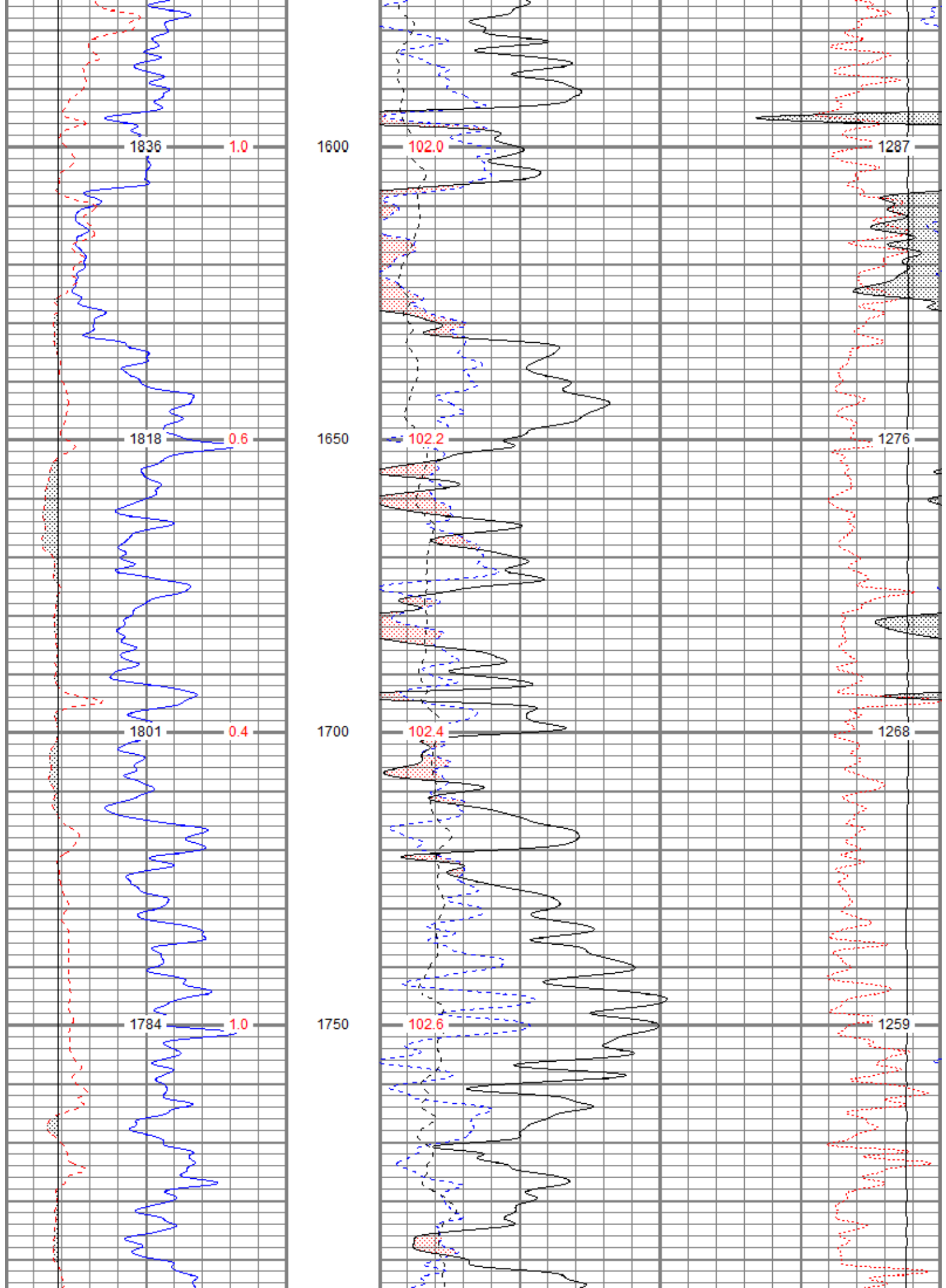




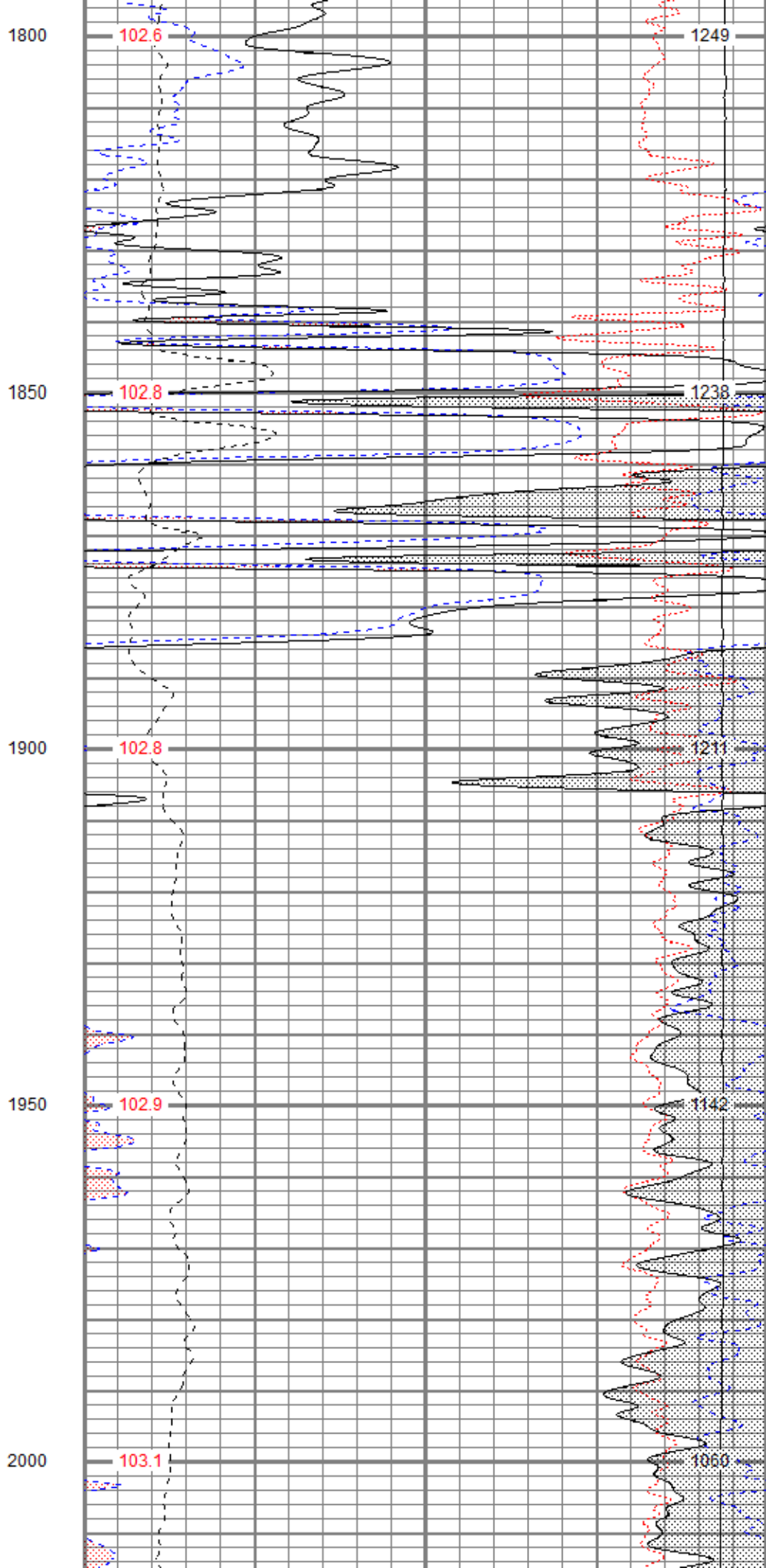
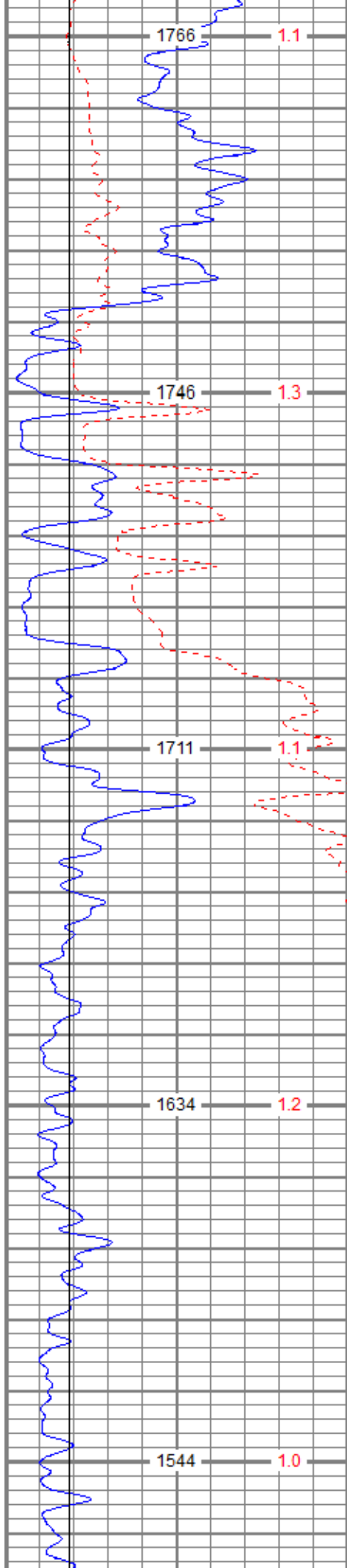


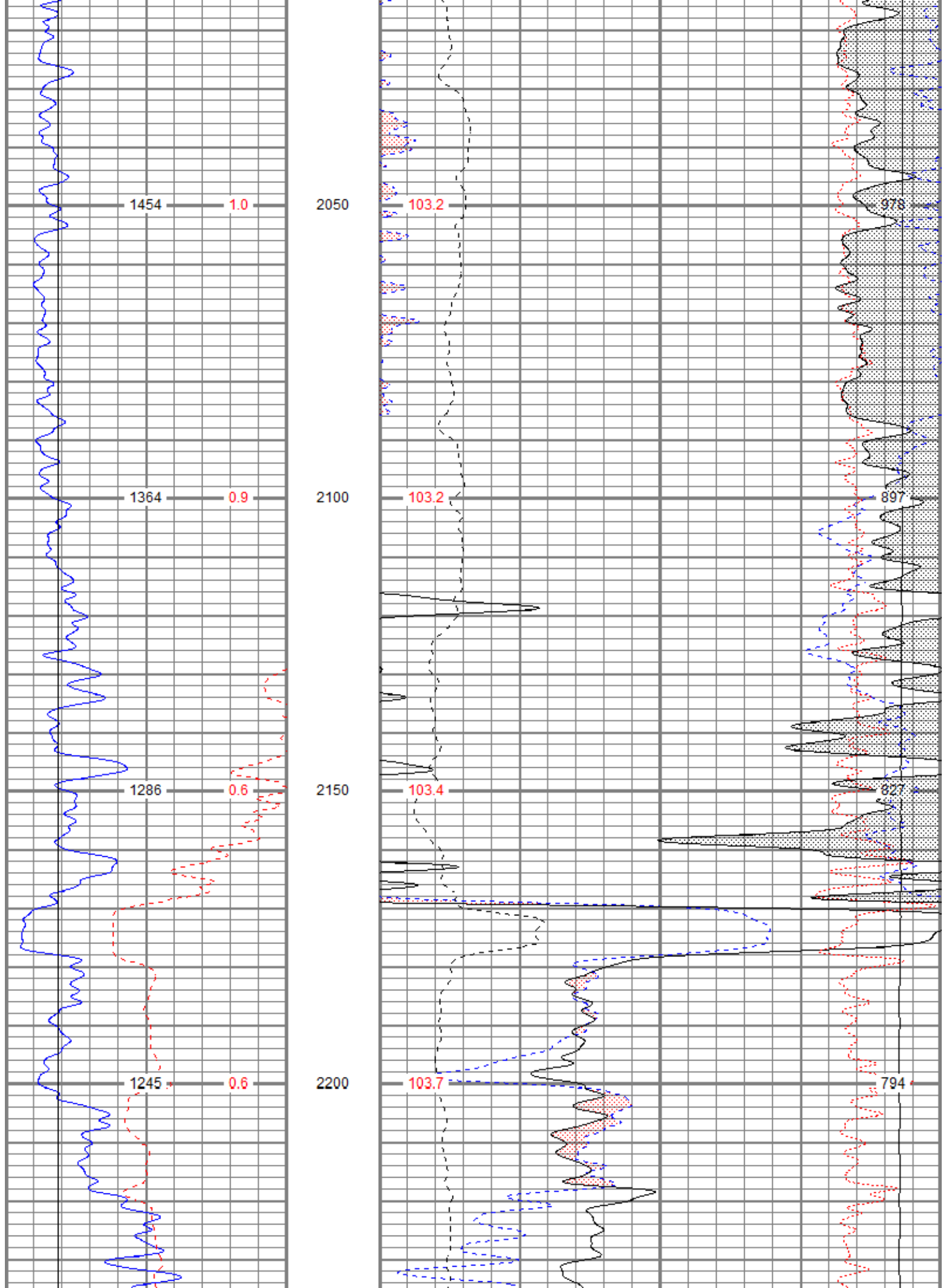


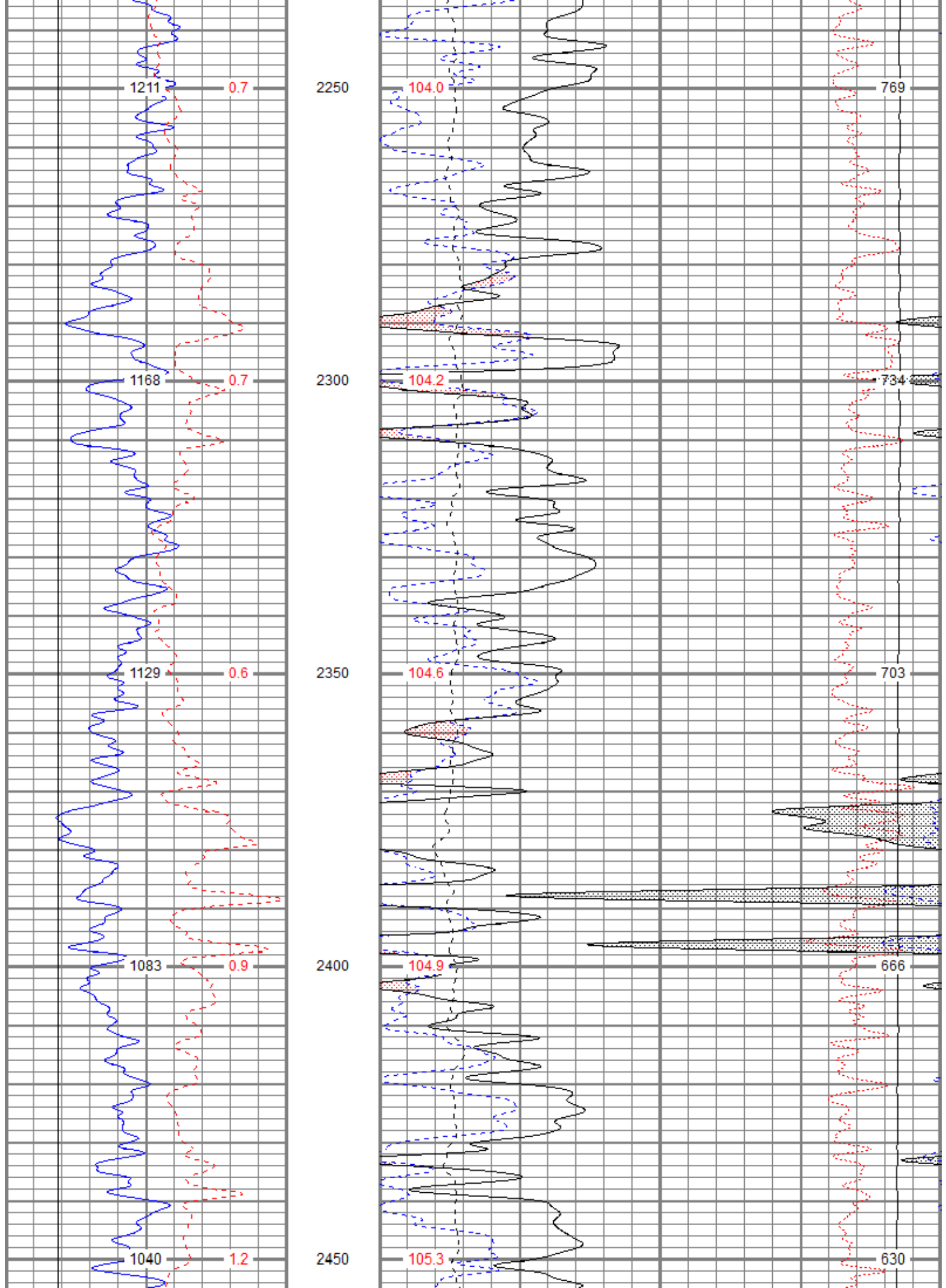


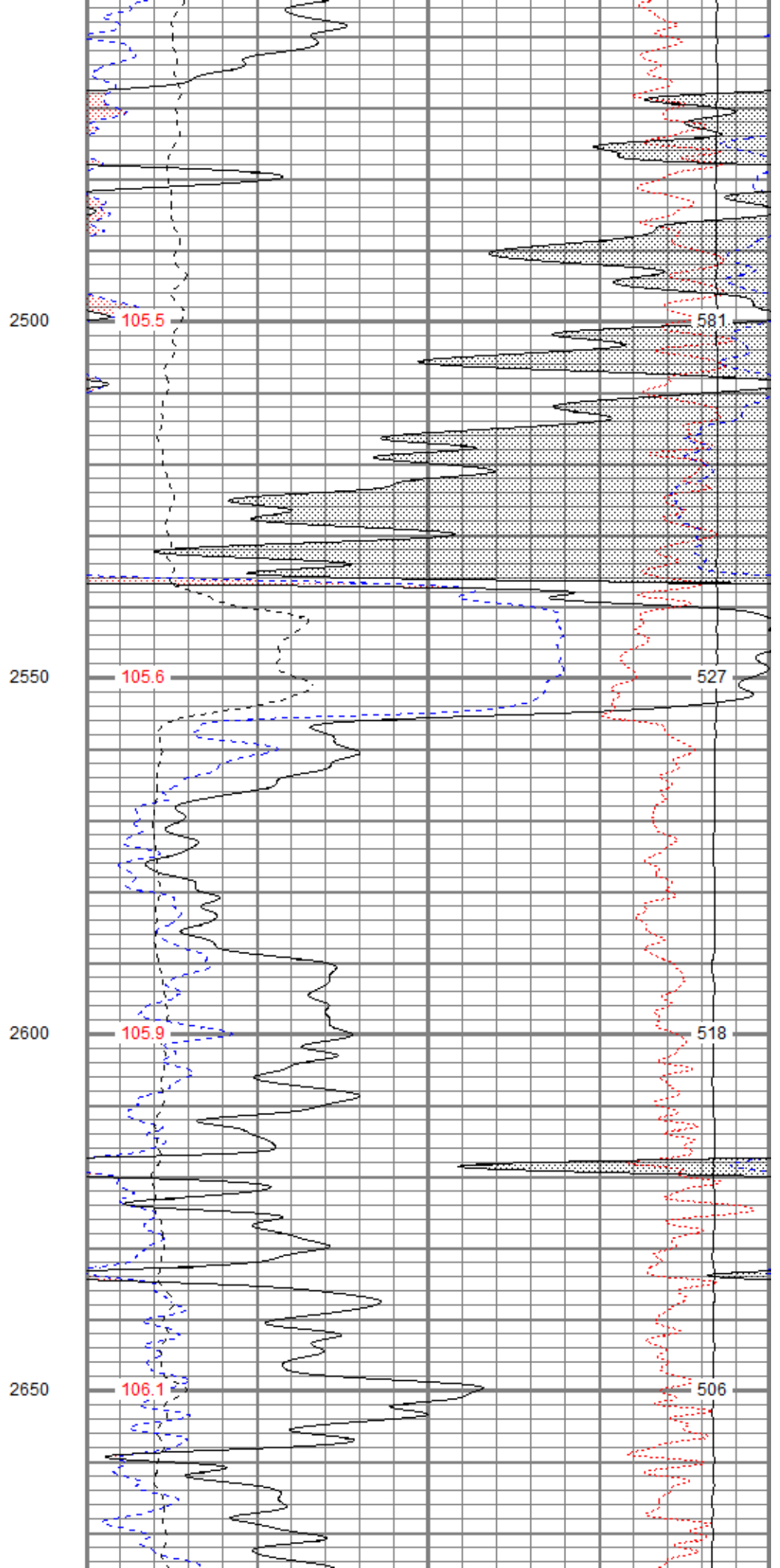
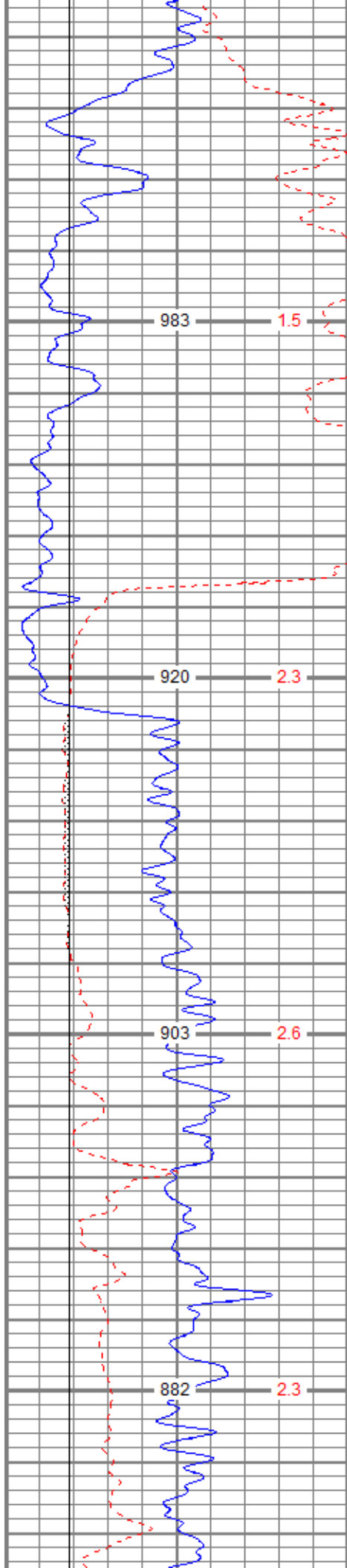


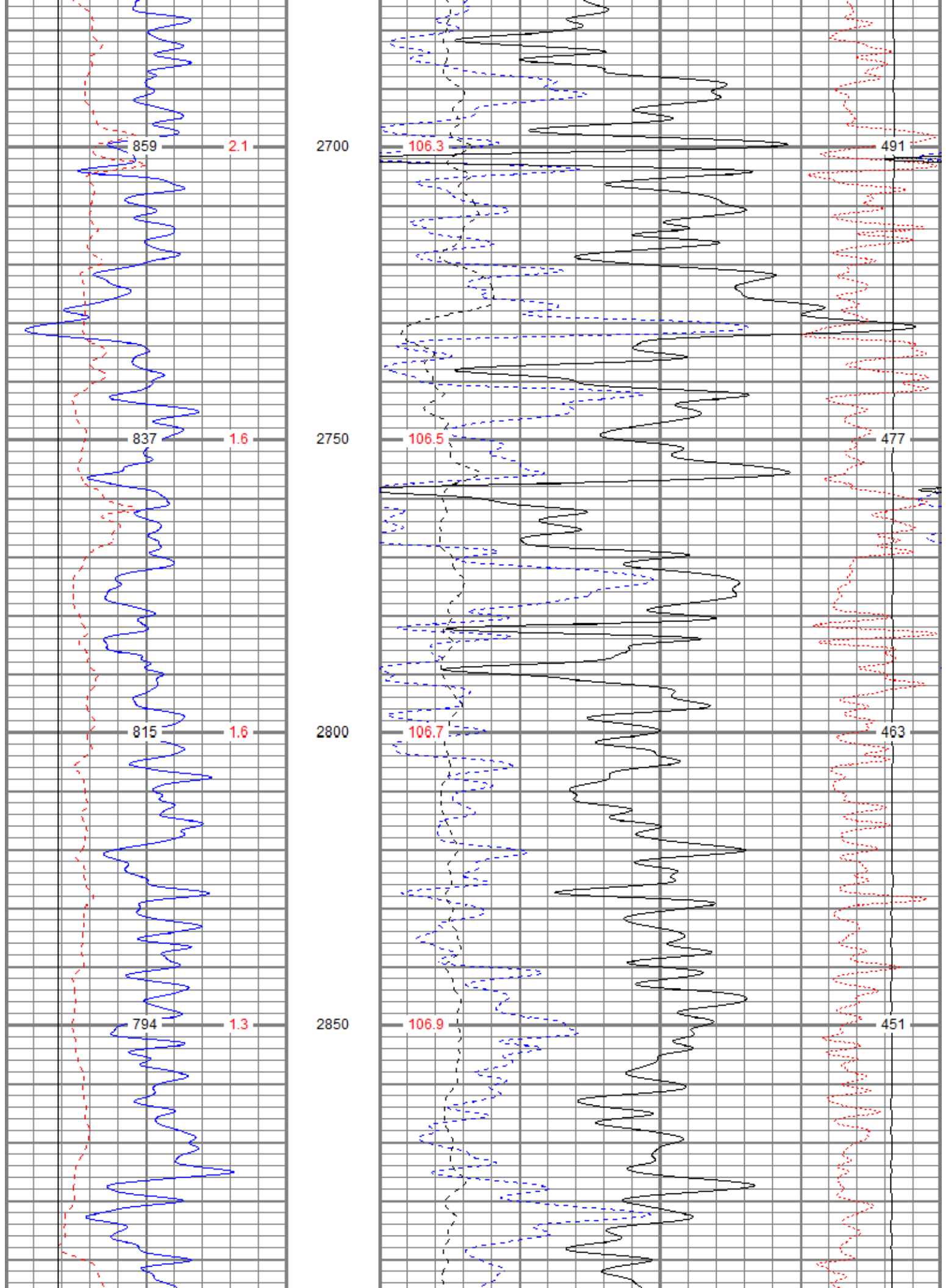




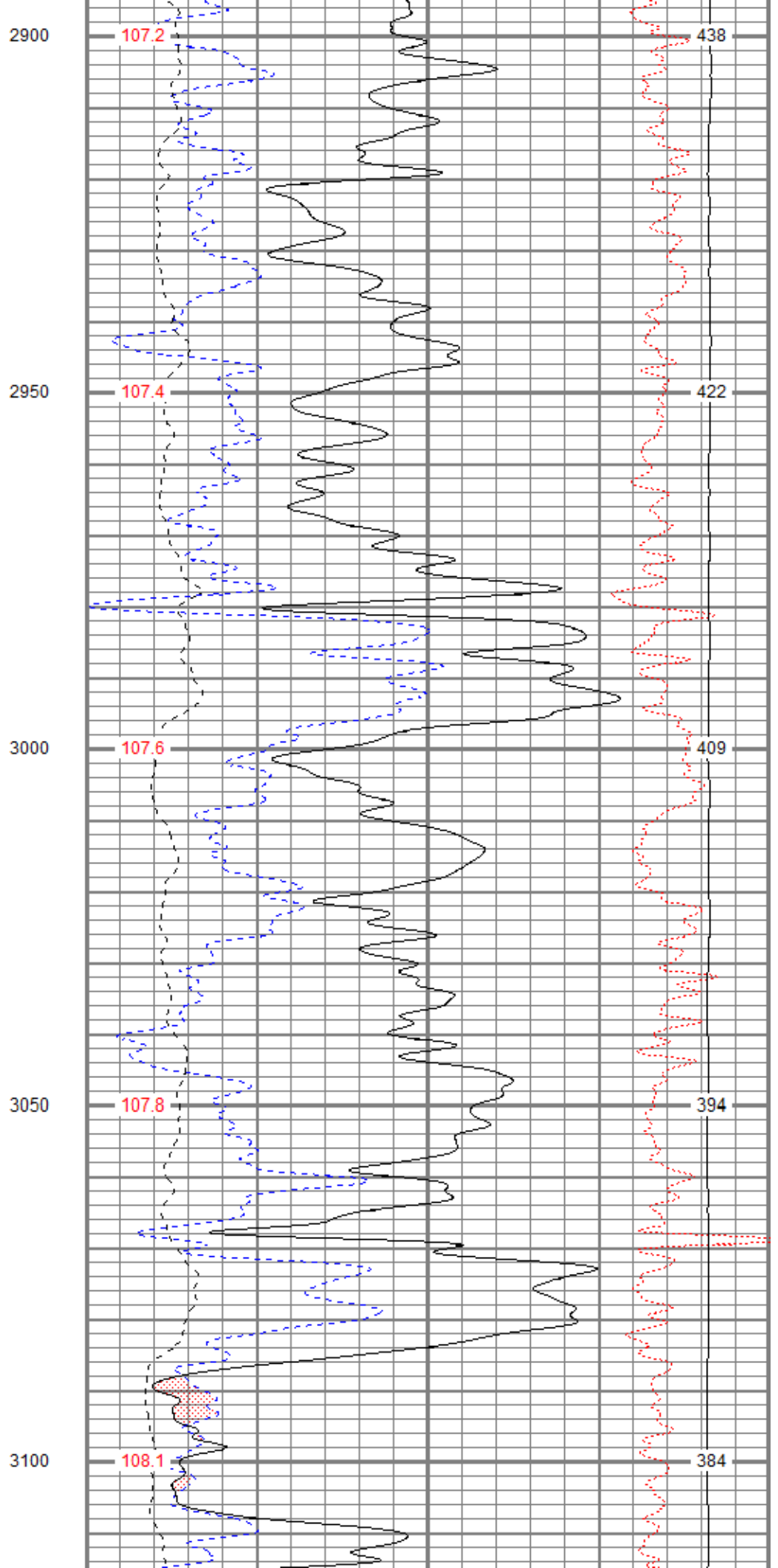
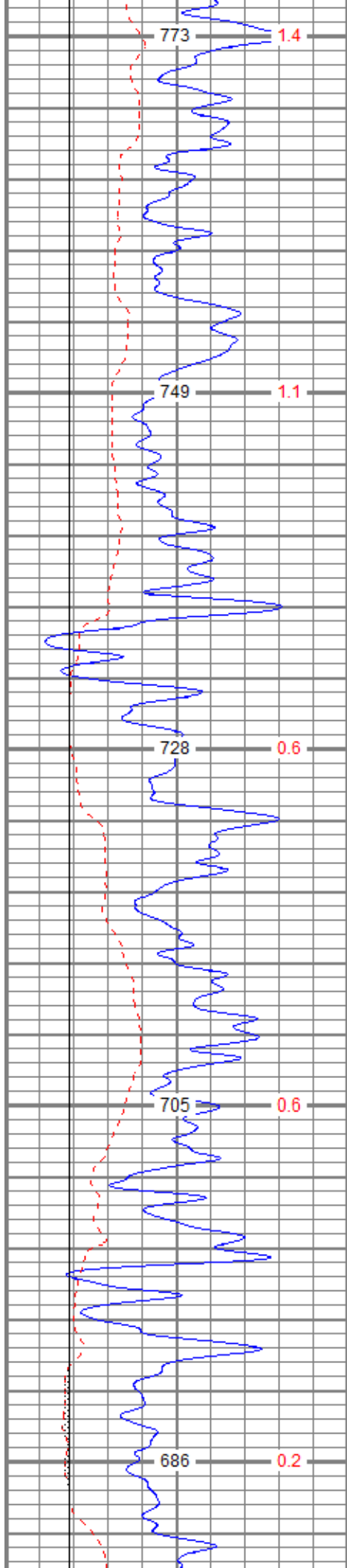


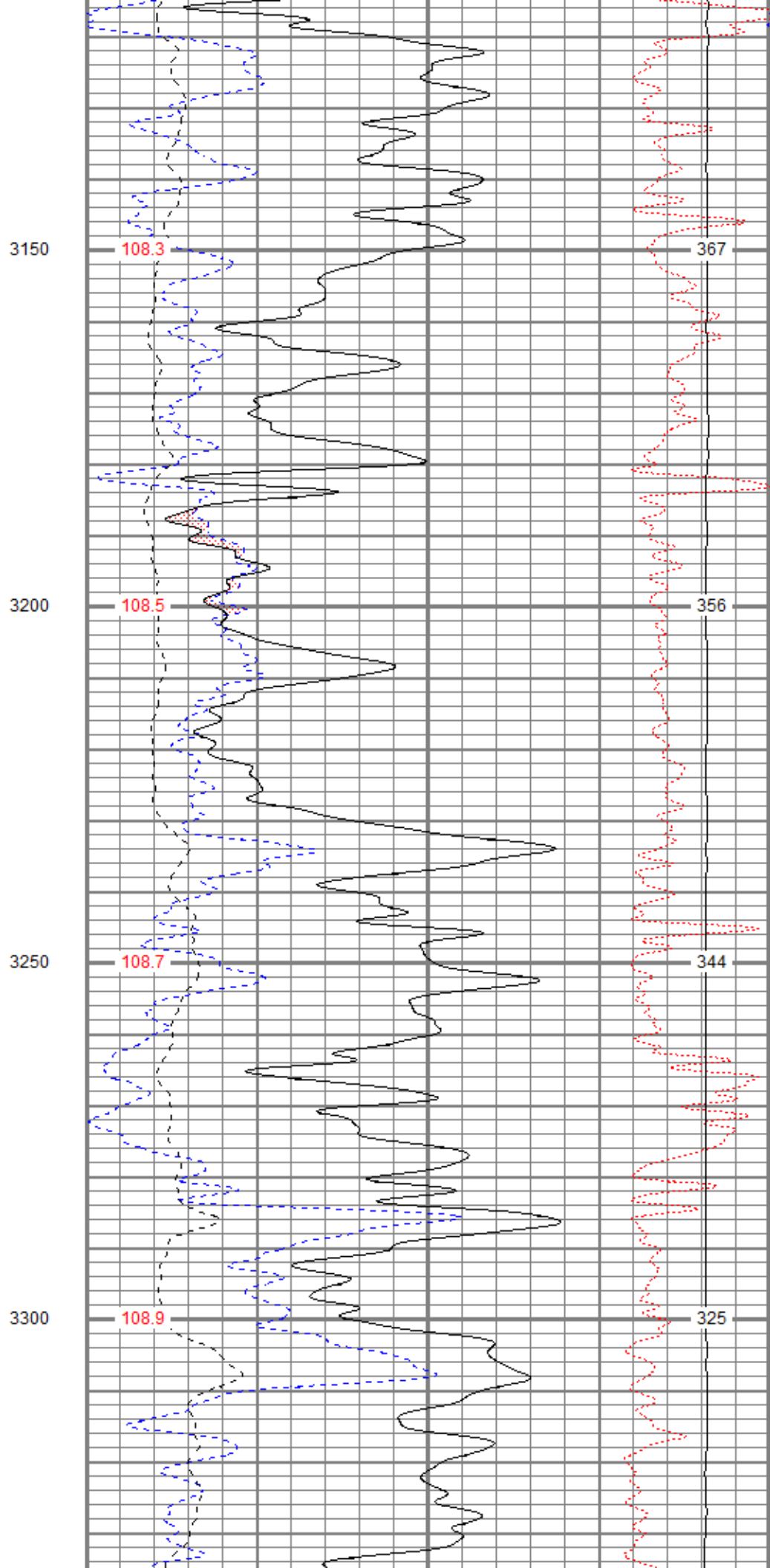
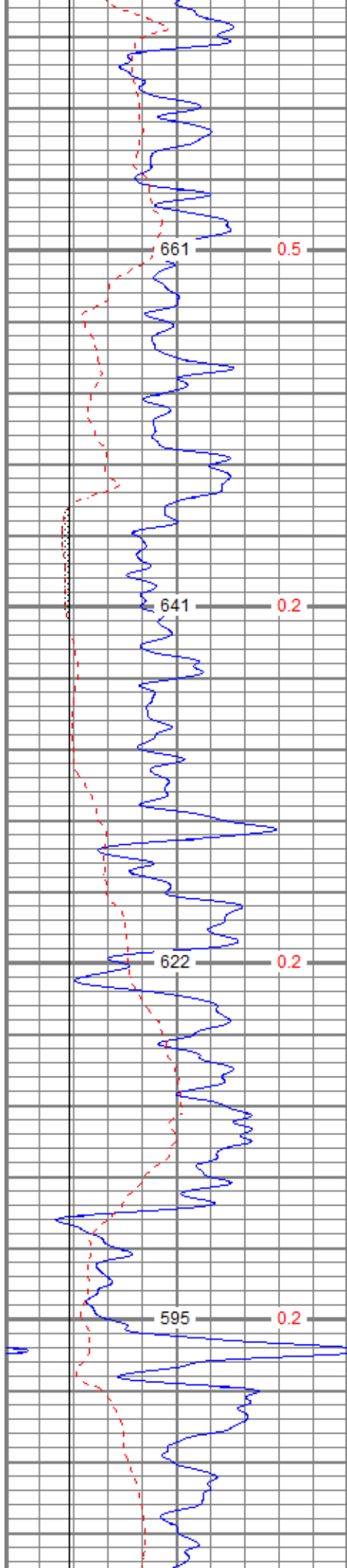


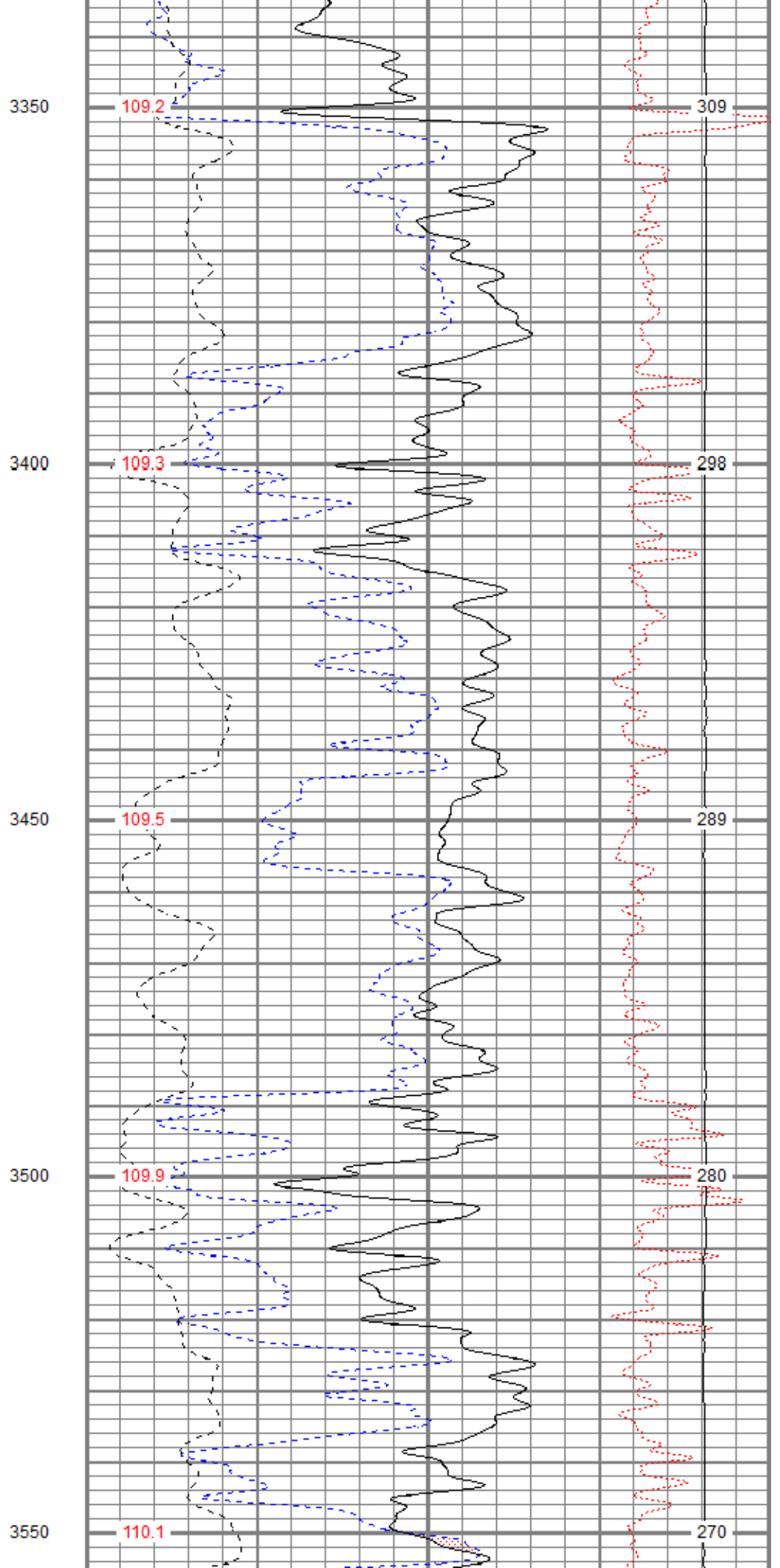
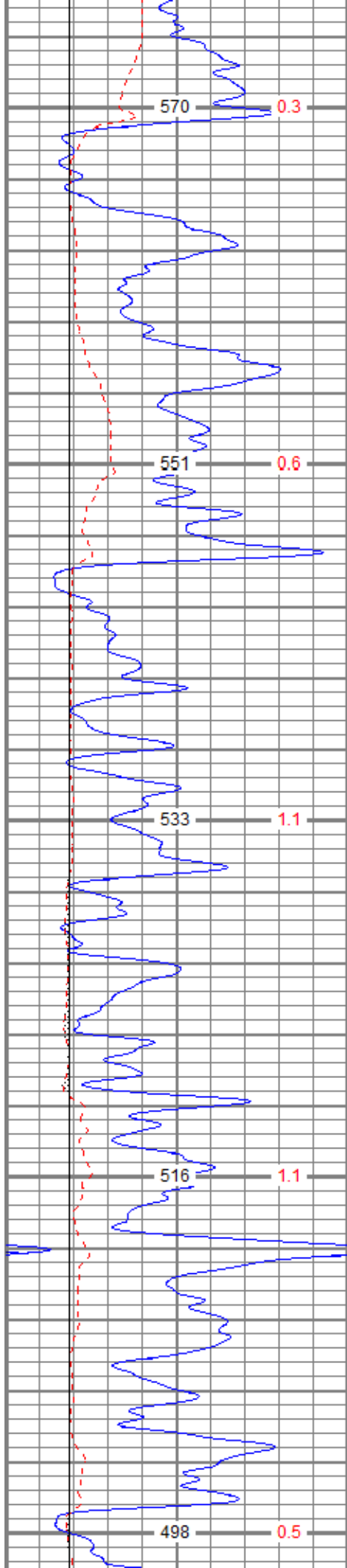


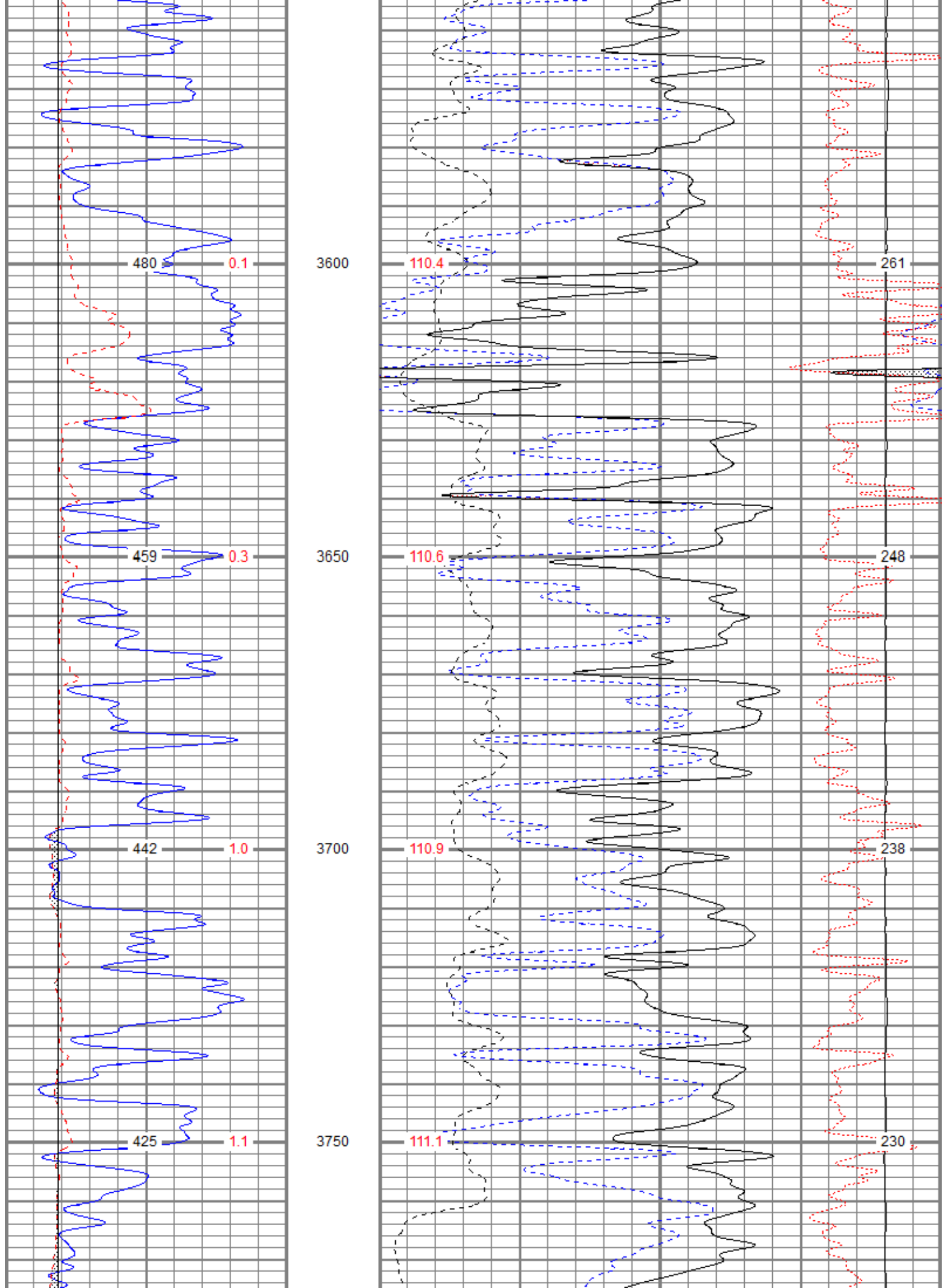


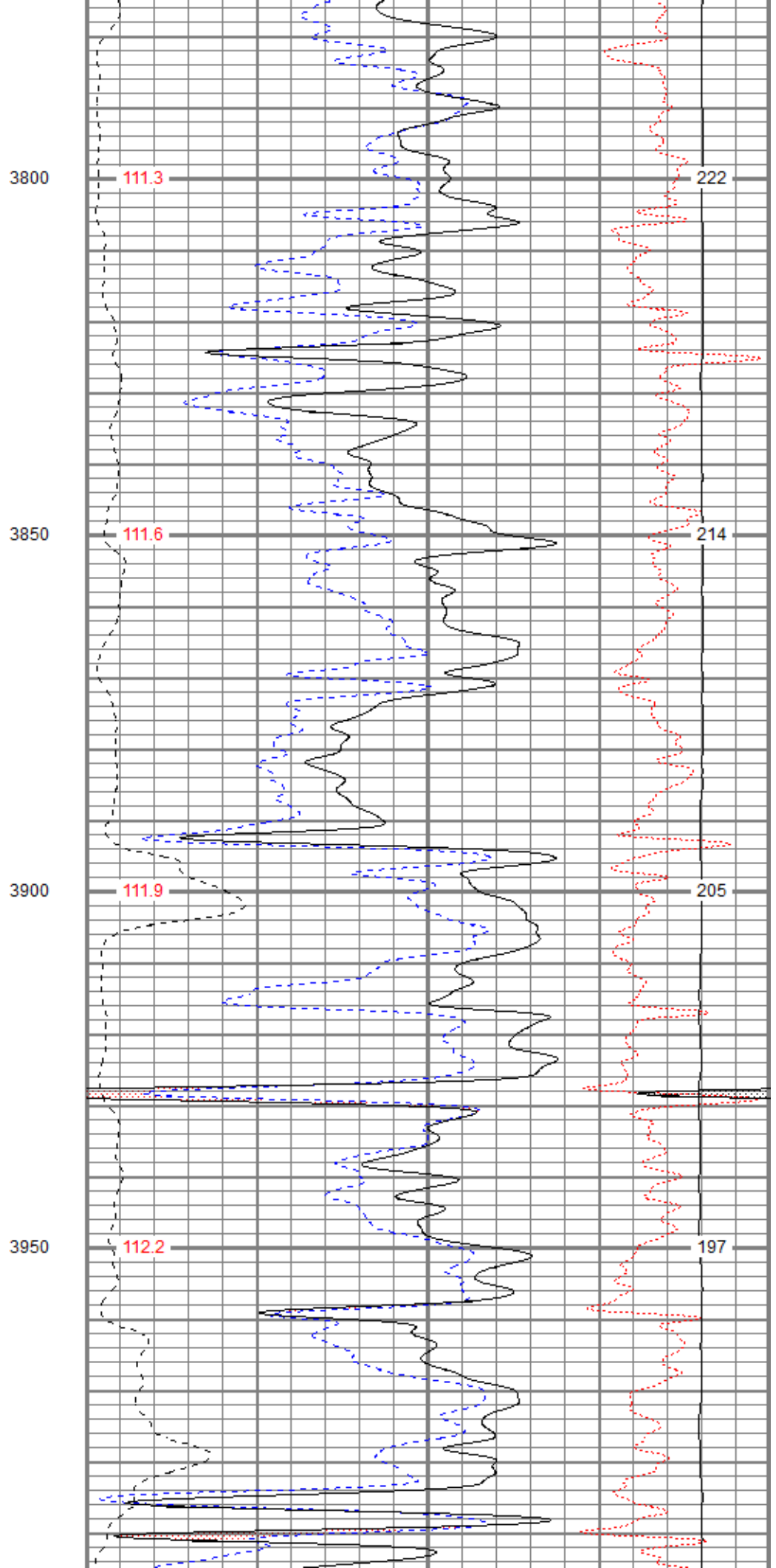
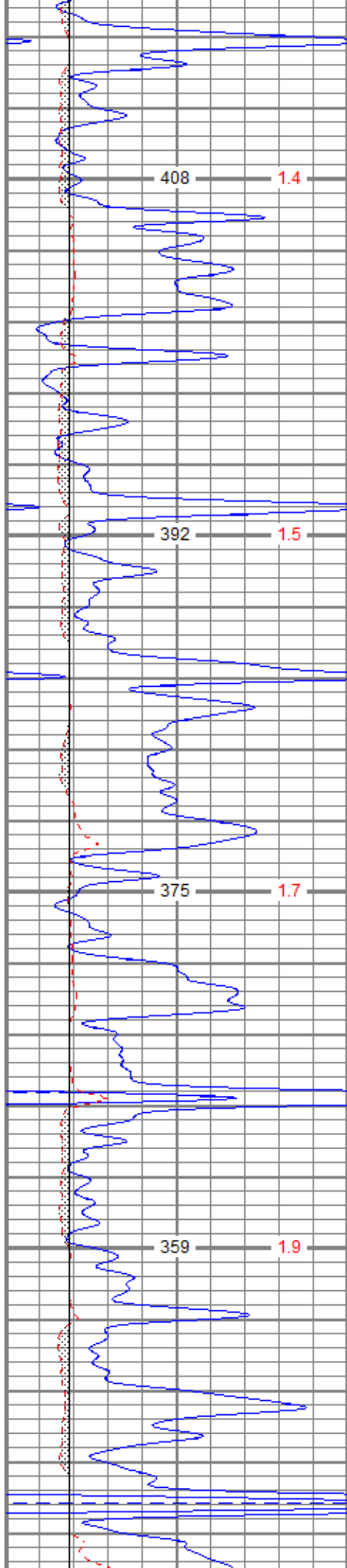




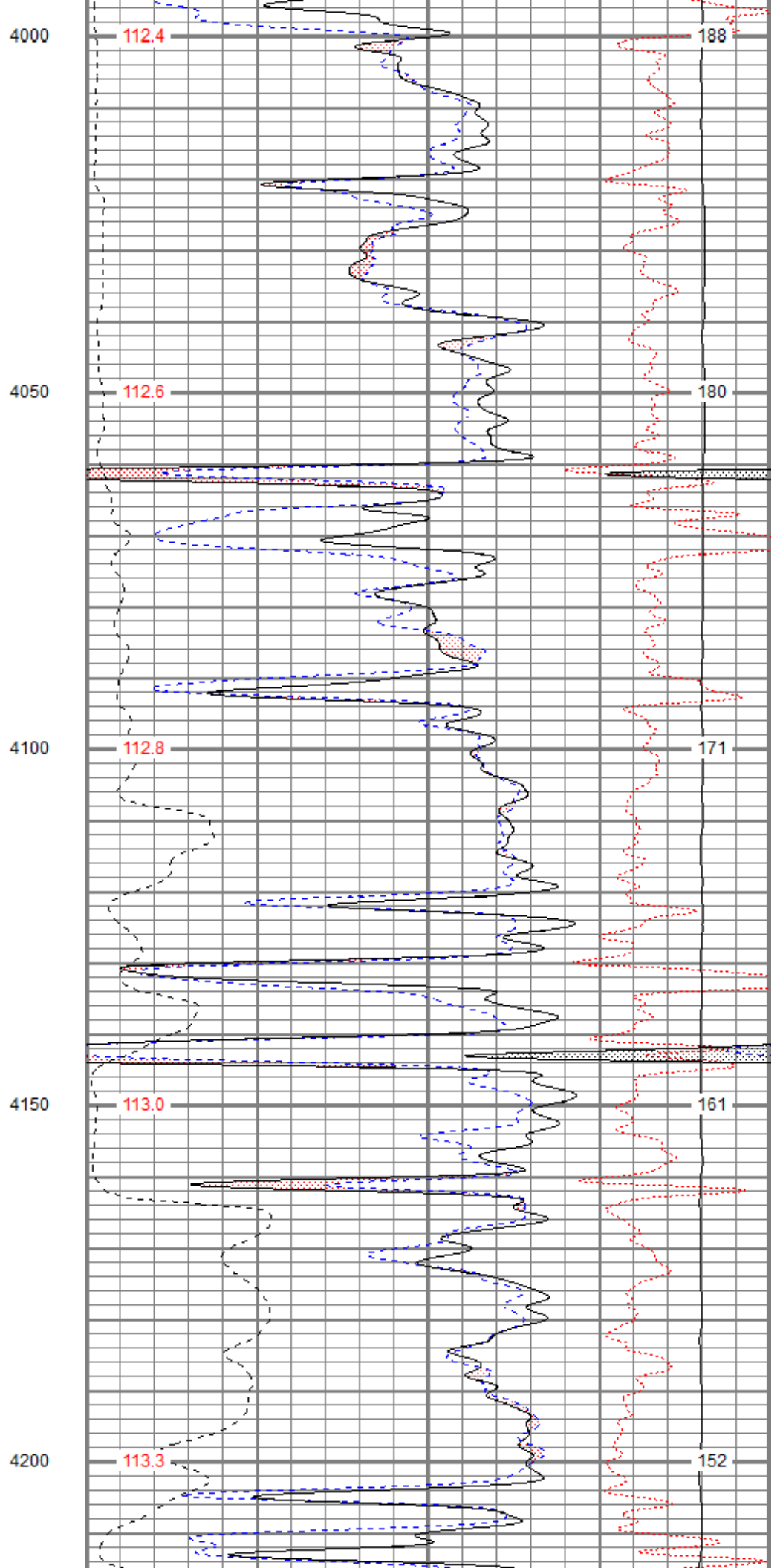
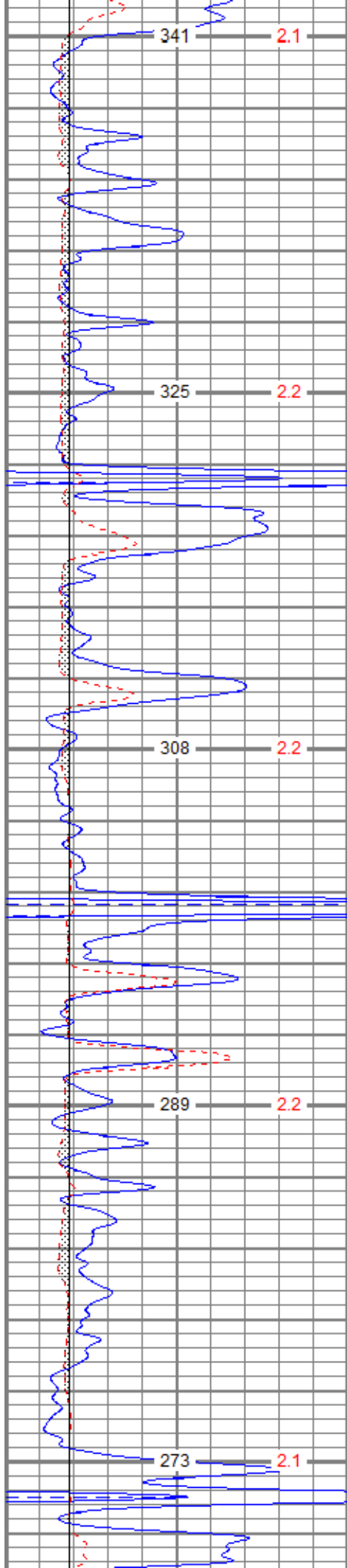


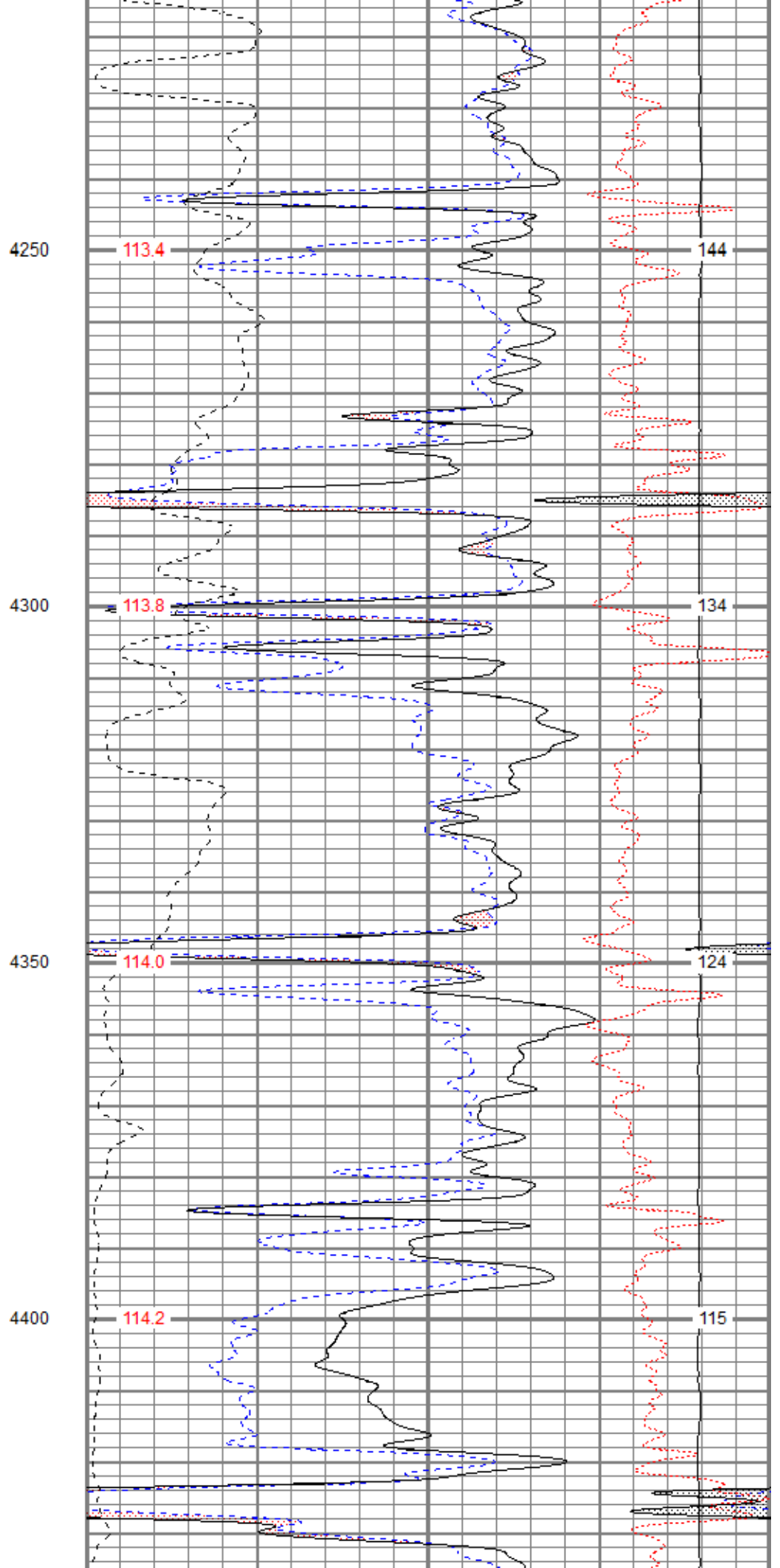
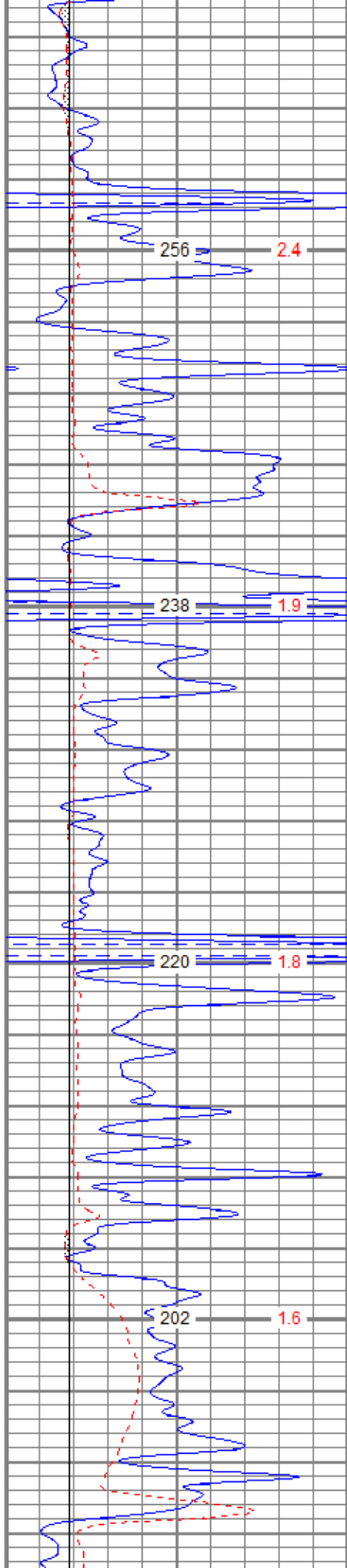


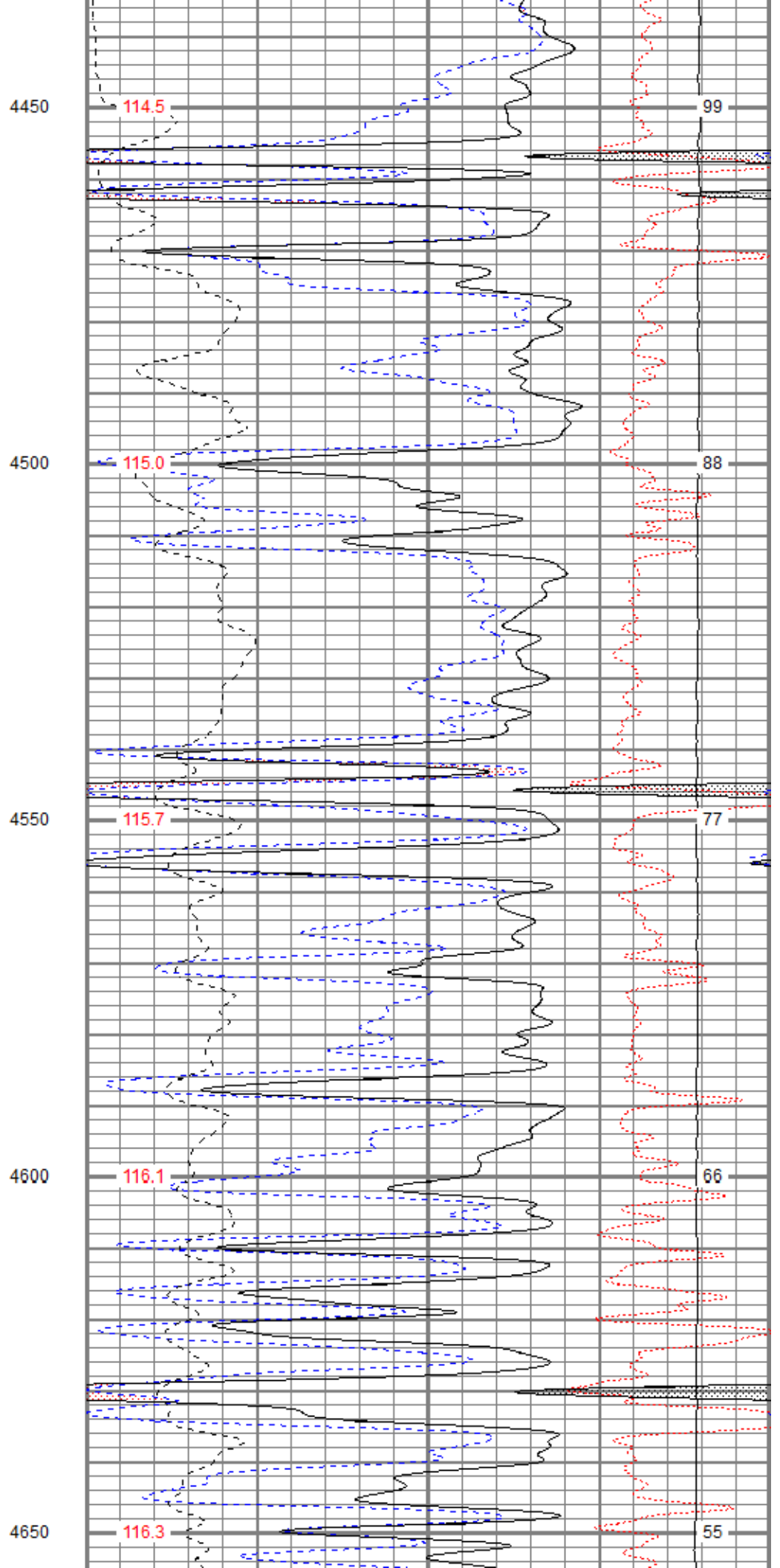
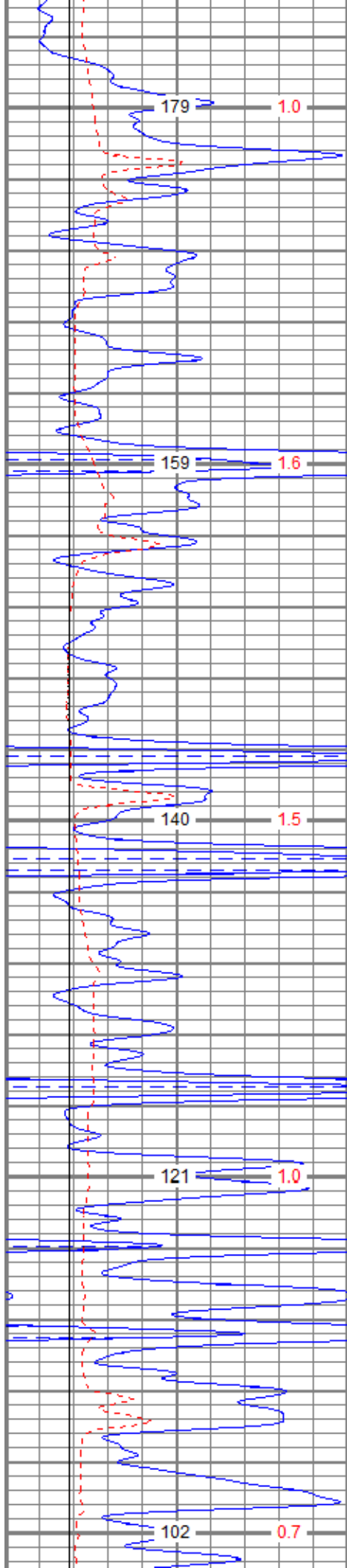


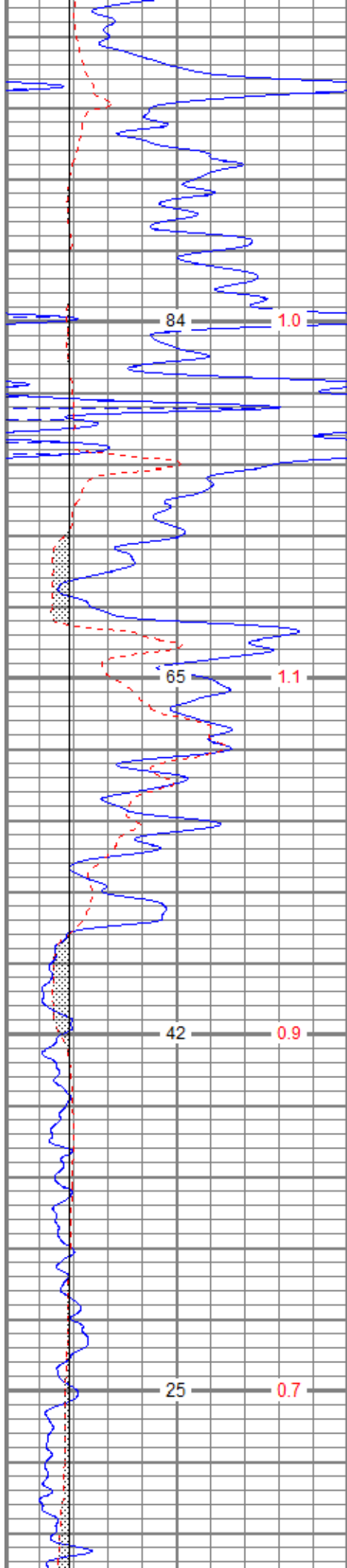




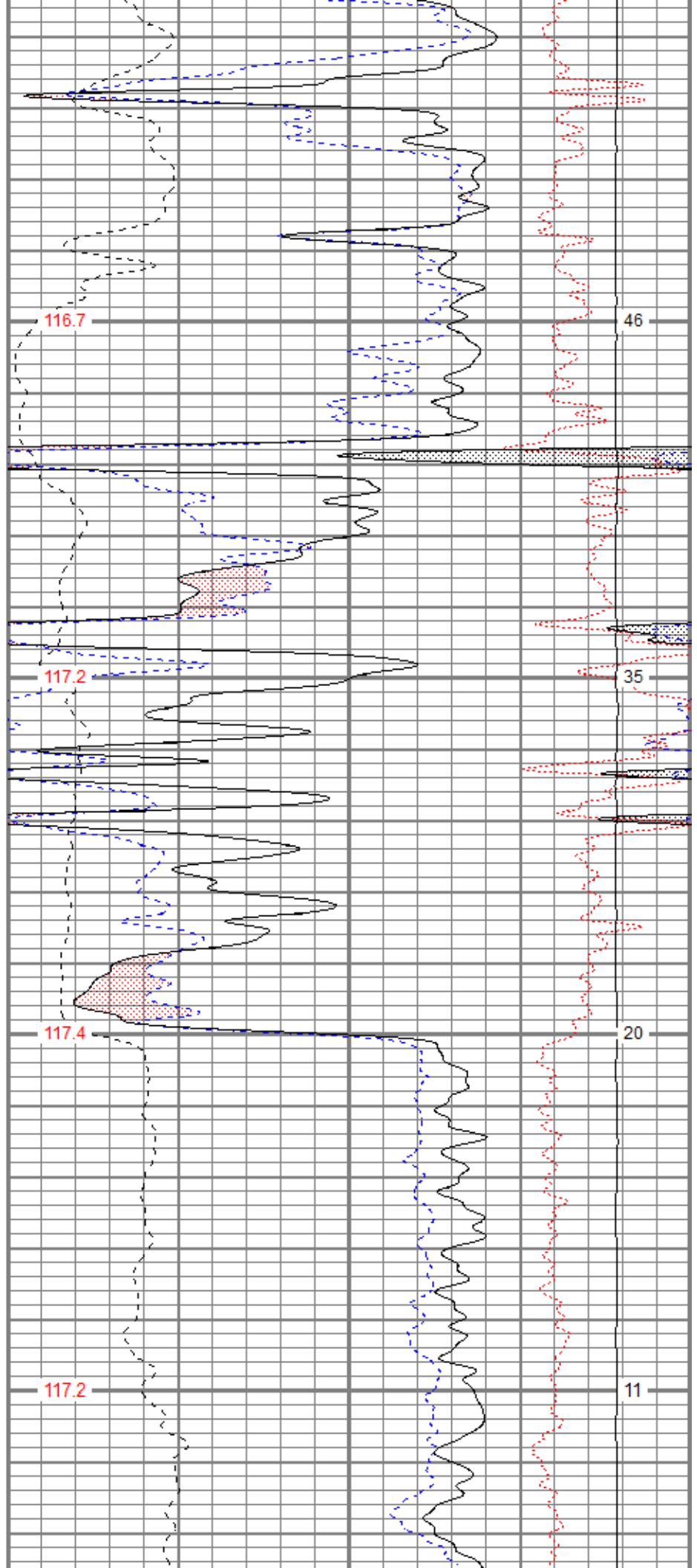








4700

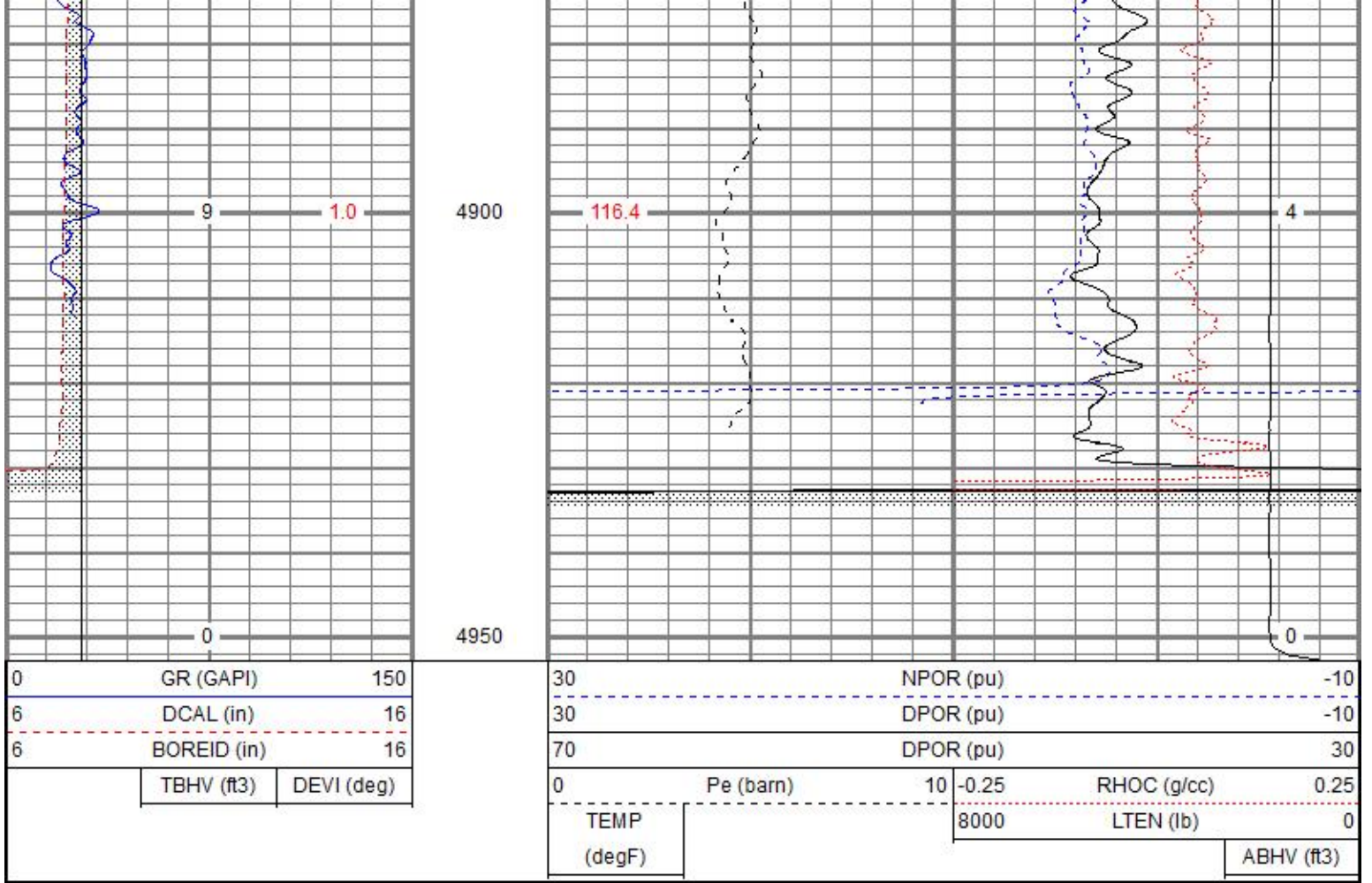


4750

4800

4850

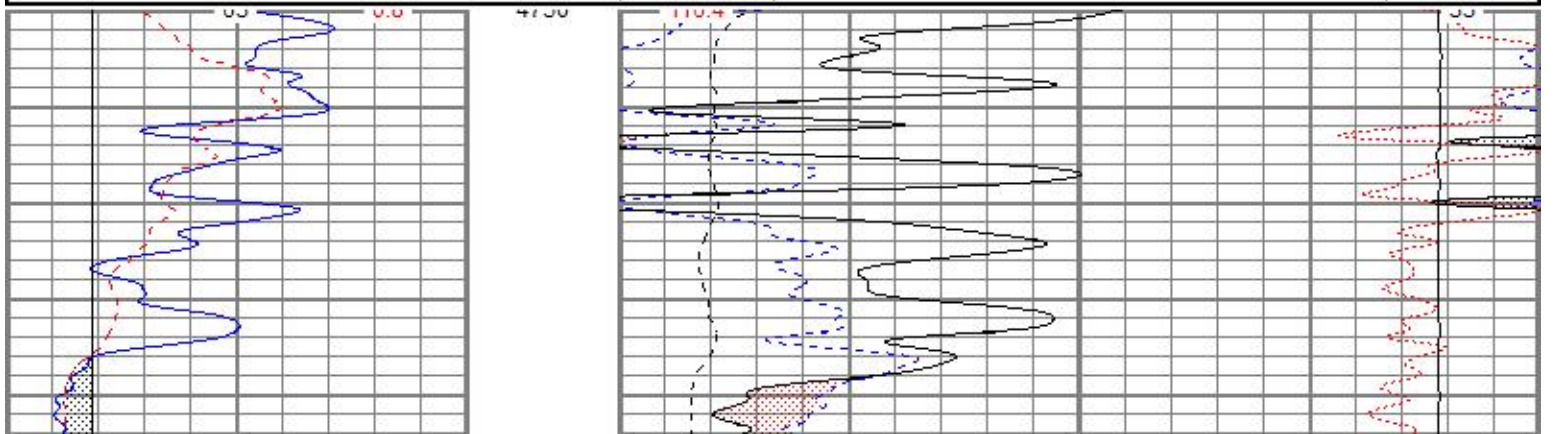




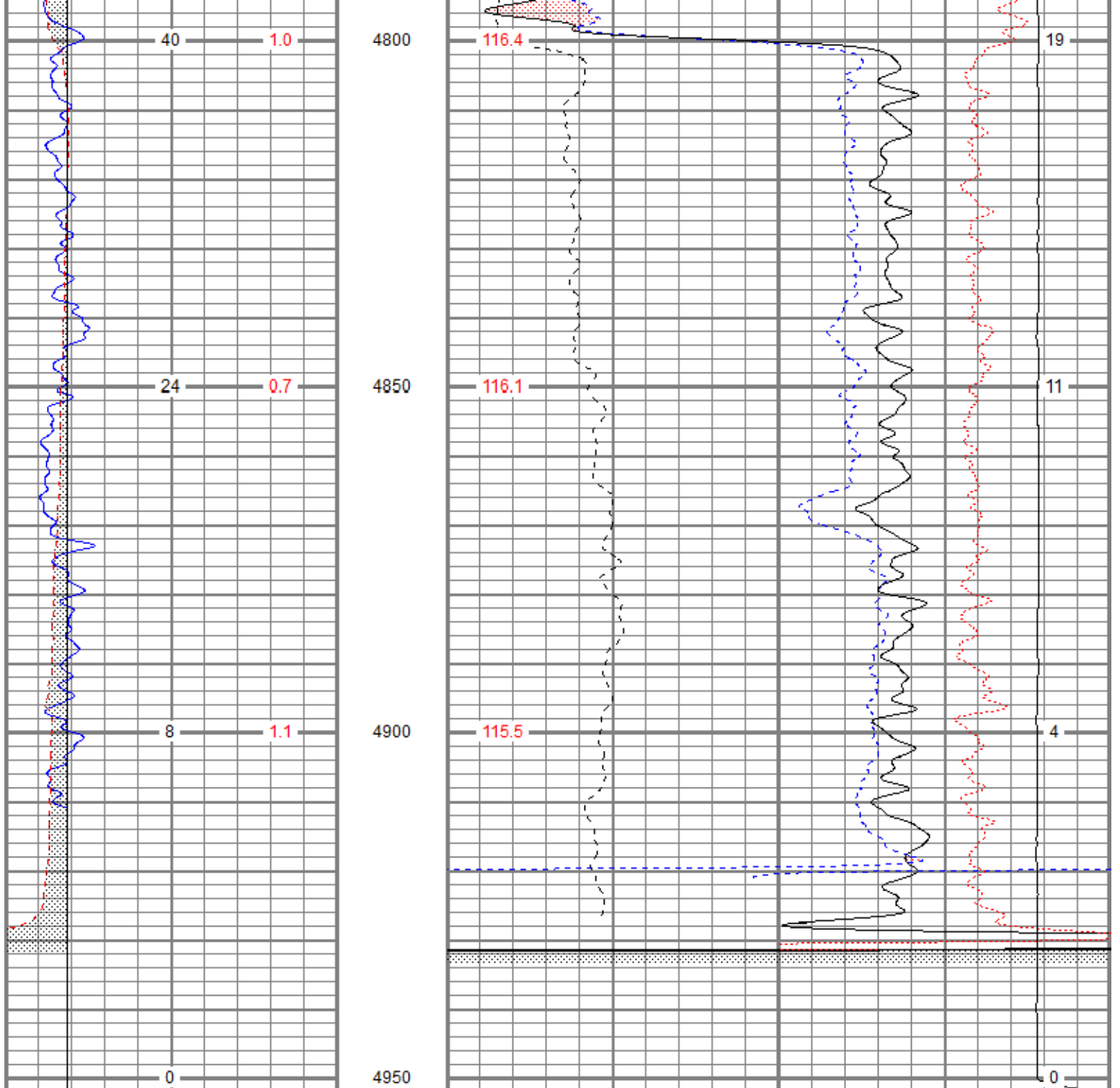

# REPEAT SECTION

Database File: ppdirks#1oh.db  
 Dataset Pathname: pass2.1  
 Presentation Format: digital\_kcdnl  
 Dataset Creation: Wed Jul 18 14:25:16 2018  
 Charted by: Depth in Feet scaled 1:240

0	GR (GAPI)	150	30	NPOR (pu)	-10
6	DCAL (in)	16	30	DPOR (pu)	-10
6	BOREID (in)	16	70	DPOR (pu)	30
	TBHV (ft3)	DEVI (deg)	0	Pe (barn)	10
			TEMP (degF)	8000	RHOC (g/cc)
					0.25
					LTEN (lb)
					0
					ABHV (ft3)







0	GR (GAPI)	150	30	NPOR (pu)	-10
6	DCAL (in)	16	30	DPOR (pu)	-10
6	BOREID (in)	16	70	DPOR (pu)	30
	TBHV (ft3)	DEVI (deg)	0	Pe (barn)	10
			TEMP (degF)	-0.25	RHOC (g/cc)
				8000	LTEN (lb)
					0
					ABHV (ft3)

Calibration Report

Database File ppdirks#1oh.db  
 Dataset Pathname pass3.2  
 Dataset Creation Wed Jul 18 15:07:10 2018

Dual Induction Calibration Report

Serial-Model: 1989-ADM  
 Surface Cal Performed: Wed Jun 06 19:34:10 2018  
 Downhole Cal Performed: Wed Jun 06 19:34:10 2018

Surface Calibration

			Readings		References		Results	
Loop:	Air	Loop		Air	Loop		m	b
Deep	-0.012	0.665	V	0.000	350.000	mmho/m	516.748	6.134
Medium	-0.013	0.752	V	0.000	400.000	mmho/m	522.482	6.987
Internal:	Zero	Cal		Zero	Cal		m	b
Deep	-0.011	0.668	V	0.000	350.000	mmho/m	515.730	5.704
Medium	-0.015	0.752	V	0.000	550.000	mmho/m	716.653	10.787

Downhole Calibration

			Readings		References		Results	
Internal:	Zero	Cal		Zero	Cal		m	b
Deep	0.000	0.000	mmho/m	0.419	351.110	mmho/m	1.000	0.000
Medium	0.000	0.000	mmho/m	-0.877	400.105	mmho/m	1.000	0.000
Shallow	2.502	0.040	V	500.000	2.000	Ohm-m	180.323	-3.126

After Survey Verification

			Readings		Targets		Results	
Internal:	Zero	Cal		Zero	Cal		m'	b'
Deep	0.000	0.000	mmho/m	0.000	0.000	mmho/m	1.000	0.000
Medium	0.000	0.000	mmho/m	0.000	0.000	mmho/m	1.000	0.000
Shallow	0.000	0.000	Ohm-m	500.000	2.000	Ohm-m	1.000	0.000

Neutron Calibration Report

Serial Number: 2017  
 Tool Model: lithogearhart  
 Performed: (Not Performed)

Calibrator Value: 1 NAPI

Calibrator Reading: 1 cps

Sensitivity: 1 NAPI/cps

Temperature Calibration Report

Serial Number: WithOutMC  
 Tool Model: WOMC  
 Performed: (Not Performed)

	Reference	Reading
Low Reference:	0.00 degF	0.00 degF
High Reference:	1.00 degF	1.00 degF

Gain: 1.00  
 Offset: 0.00  
 Delta Spacing: 1

Inclinometer Calibration Report

Performed: Wed Dec 06 22:31:06 2017

	Low Read.	High Read.	Low Ref.	High Ref.
X Accelerometer	205.00	1843.00	-1.00	1.00

gee

Y Accelerometer

205.00

1843.00

-1.00

1.00

gee

Z Accelerometer

gee

## Gamma Ray Calibration Report

Serial Number: WithOutMC  
 Tool Model: WOMC  
 Performed: Wed Dec 06 22:30:58 2017

Calibrator Value: 1.0 GAPI

Background Reading: 0.0 cps  
 Calibrator Reading: 1.0 cps

Sensitivity: 1.0000 GAPI/cps

Sensor	Offset (ft)	Schematic	Description	Length (ft)	O.D. (in)	Weight (lb)
GR	38.31		CHD-STD	0.50	1.69	1.00
ACCY	37.15		ADT-WOMC (WithOutMC) Telemetry Without Mud Cell	4.58	3.50	120.00
ACCX	37.15					
SSTAT	36.73					
PSTAT	35.90					
ASTAT	35.90		NEU-lithogearhart (2017)	5.65	3.50	85.00
GRD	35.06					
TEMP	35.06					
NEU	31.70					
LStat	22.54					
LS8	21.88					
LS7	21.88		ADT1LITH-A (1) Admyr Litho Density Tool	9.29	3.50	240.00
LS6	21.88					
LS5	21.88					
LS4	21.88					
LS3	21.88					
LS2	21.88					
LS1	21.88					
LSV	21.88					
LSD	21.86					
SSV	21.67					
SS8	21.67					
SS7	21.67					
SS6	21.67		DIL-ADM (1989) Dual Induction	19.71	4.00	300.00
SS5	21.67					
SS4	21.67					
SS3	21.67					
SS2	21.67					
SS1	21.67					
DCAL	21.61					
SSD	21.27					
SP	10.60					
CILD	10.60					
CILM	6.89	Dataset: ppdirks#1oh.db: field/well/run1/pass3.2				
RLL3	1.70	Total length: 39.73 ft				
TR_Mon	0.00	Total weight: 746.00 lb				
		O.D.: 4.00 in				