



**MICRO  
RESISTIVITY  
LOG**

Company Palomino Petroleum, Inc.  
Well Dirks #1  
Field Wildcat  
County Logan  
State Kansas

Company Palomino Petroleum, Inc.  
Well Dirks #1  
Field Wildcat  
County Logan State Kansas

Location: API #: 15 109 21557  
2474' FSL & 614' FEL  
SEC 25 TWP 15S RGE 36W  
Permanent Datum Ground Level Elevation 3259'  
Log Measured From KB 8' AGL  
Drilling Measured From KB  
Other Services  
CDNL  
BCS  
DIL  
Elevation  
K.B. 3267'  
D.F. 3266'  
G.L. 3259'

Date	7-18-18
Run Number	Three
Depth Driller	4955'
Depth Logger	4953'
Bottom Logged Interval	4931'
Top Log Interval	300'
Casing Driller	8 5/8" @ 220'
Casing Logger	220'
Bit Size	7 7/8"
Type Fluid in Hole	Chemical
Density / Viscosity	9.1/68
PH / Fluid Loss	9.0/11.2
Source of Sample	Pit
Rm @ Meas. Temp	0.55@81degf
Rmf @ Meas. Temp	0.44@81degf
Rmc @ Meas. Temp	0.70@81degf
Source of Rmf / Rmc	Calculated
Rm @ BHT	0.37@120degf
Time Circulation Stopped	5:15 a.m
Time Logger on Bottom	2:11 p.m
Maximum Recorded Temperature	120degf
Equipment Number	T-127
Location	Hays, KS
Recorded By	C.Patterson
Witnessed By	Mr. Andrew Stenzel

<<< Fold Here >>>

All interpretations are opinions based on inferences from electrical or other measurements and we cannot and do not guarantee the accuracy or correctness of any interpretation, and we shall not, except in the case of gross or willful negligence on our part, be liable or responsible for any loss, costs, damages, or expenses incurred or sustained by anyone resulting from any interpretation made by any of our officers, agents or employees. These interpretations are also subject to our general terms and conditions set out in our current Price Schedule.

**Comments**

From KS-4 North of Scott City, Go North on Hwy 83 1.7 mi to KS-95, Turn West on KS-95 go 2.2 mi. West to North on KS-95 to W Rd. 270( turns to D Rd. On County line)  
Then Go West on W Rd 270(County D RD/ PENCE Road) for 17 mi. To Marienthal Rd.(20 Rd.)  
Then go 5.3 mi. North to West on Marienthal Rd.(20 Rd.West at correction curve) to 220 Rd.,  
Then Go North on 220 Rd 1.5 mi., West into Location

Thanks for using Gemini Wireline LLC  
785-625-1182

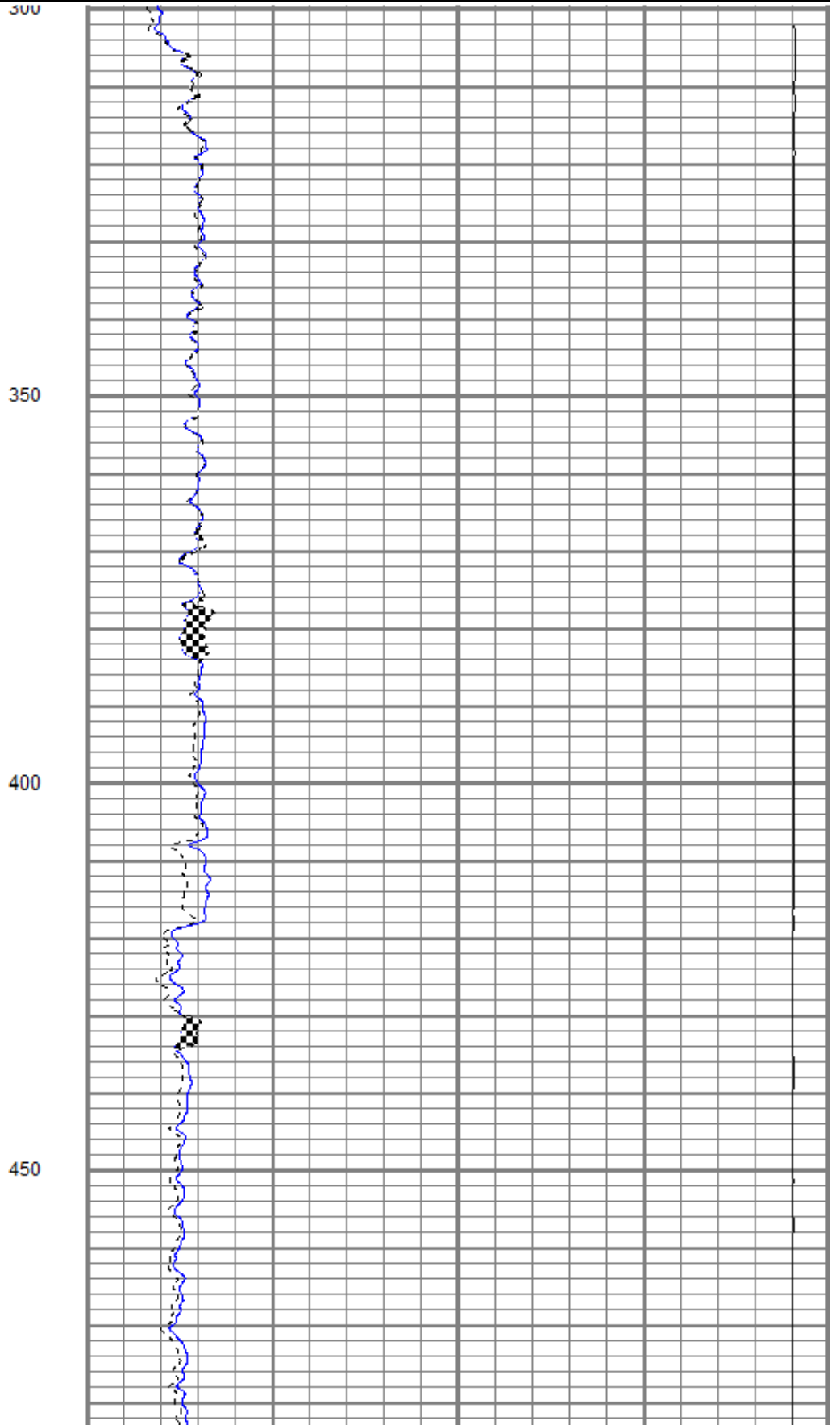
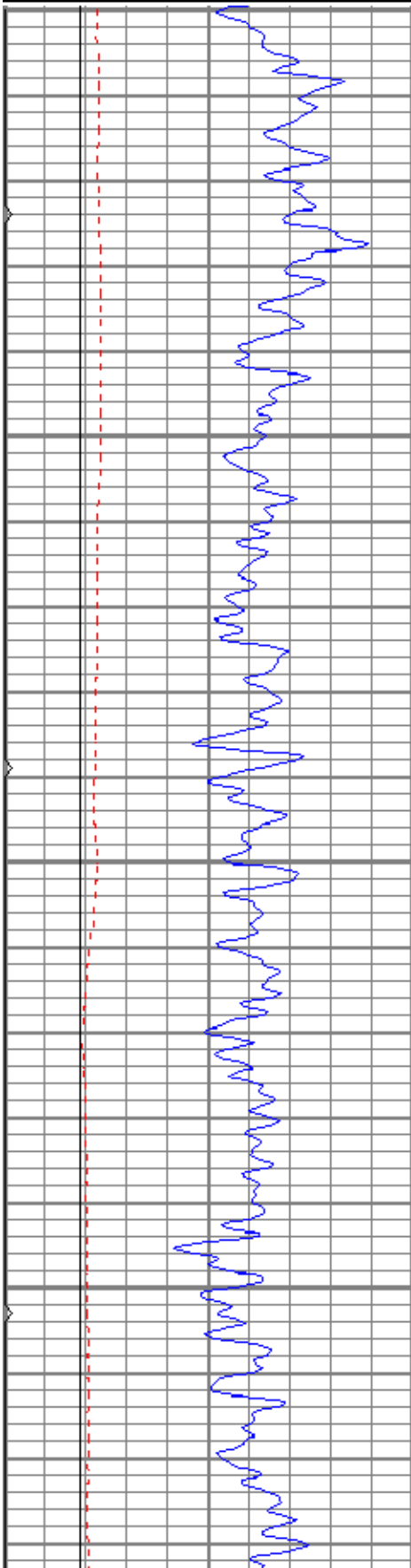


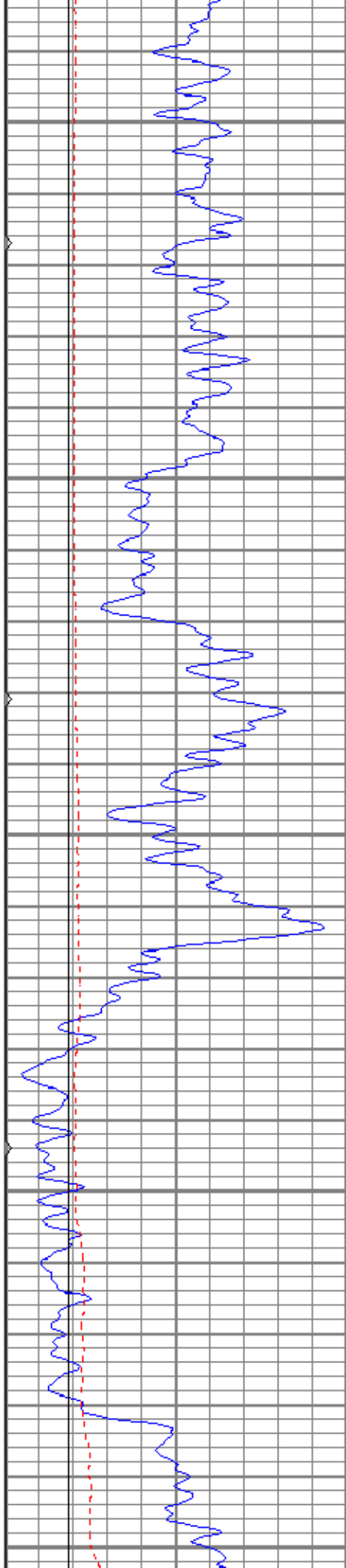
**MAIN PASS**

Database File pdirks#1oh.db  
 Dataset Pathname pass7.1  
 Presentation Format kml  
 Dataset Creation Wed Jul 18 16:12:03 2018  
 Charted by Depth in Feet scaled 1:240

0	GR (GAPI)	150
6	MCAL (in)	16
6	BOREID (in)	16
0	MINMK	50

0	MN 2" (Ohm-m)	20
0	MI 1" (Ohm-m)	20
10000	LTEN (lb)	0





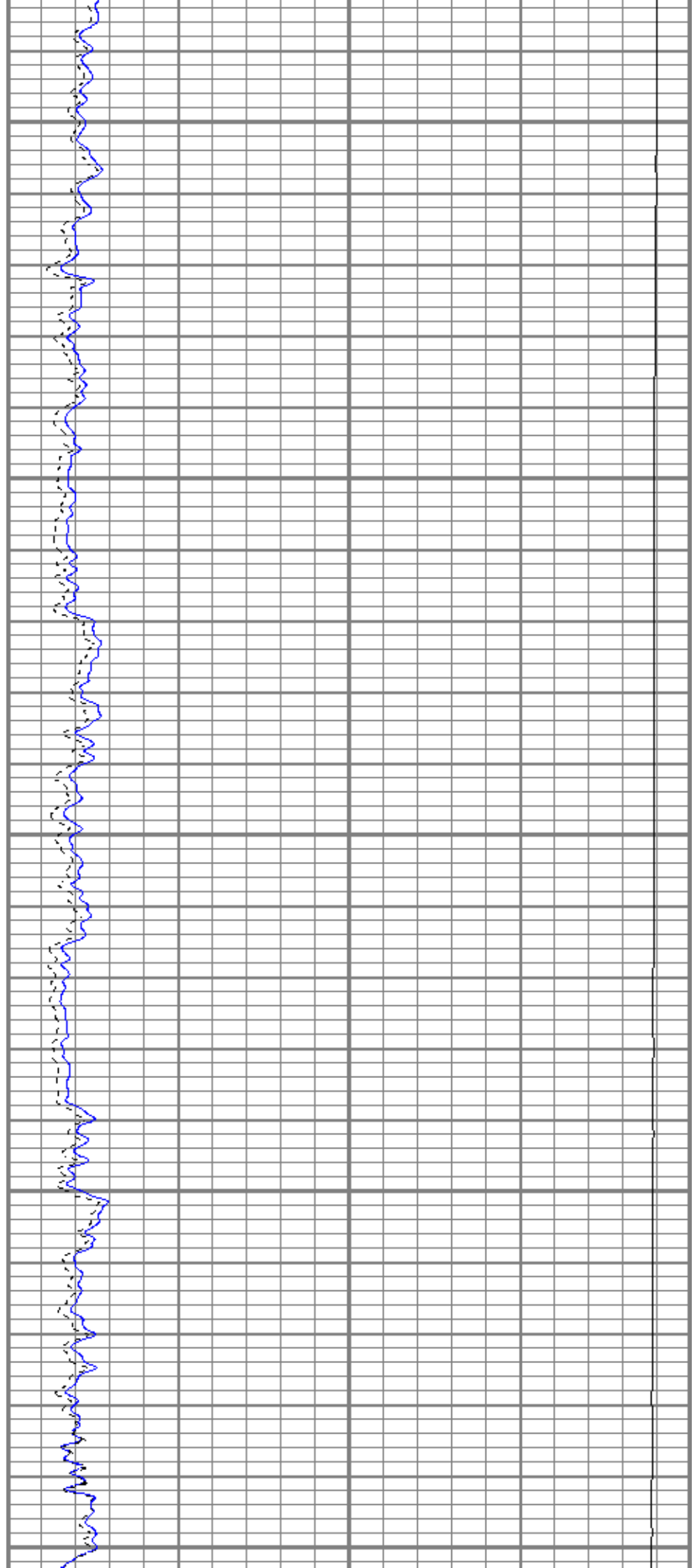
500

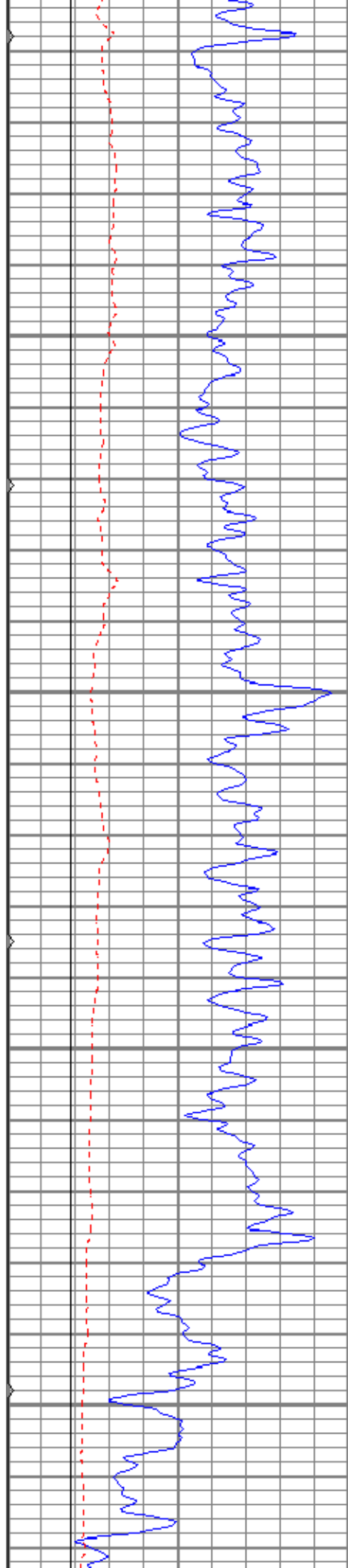
550

600

650

700



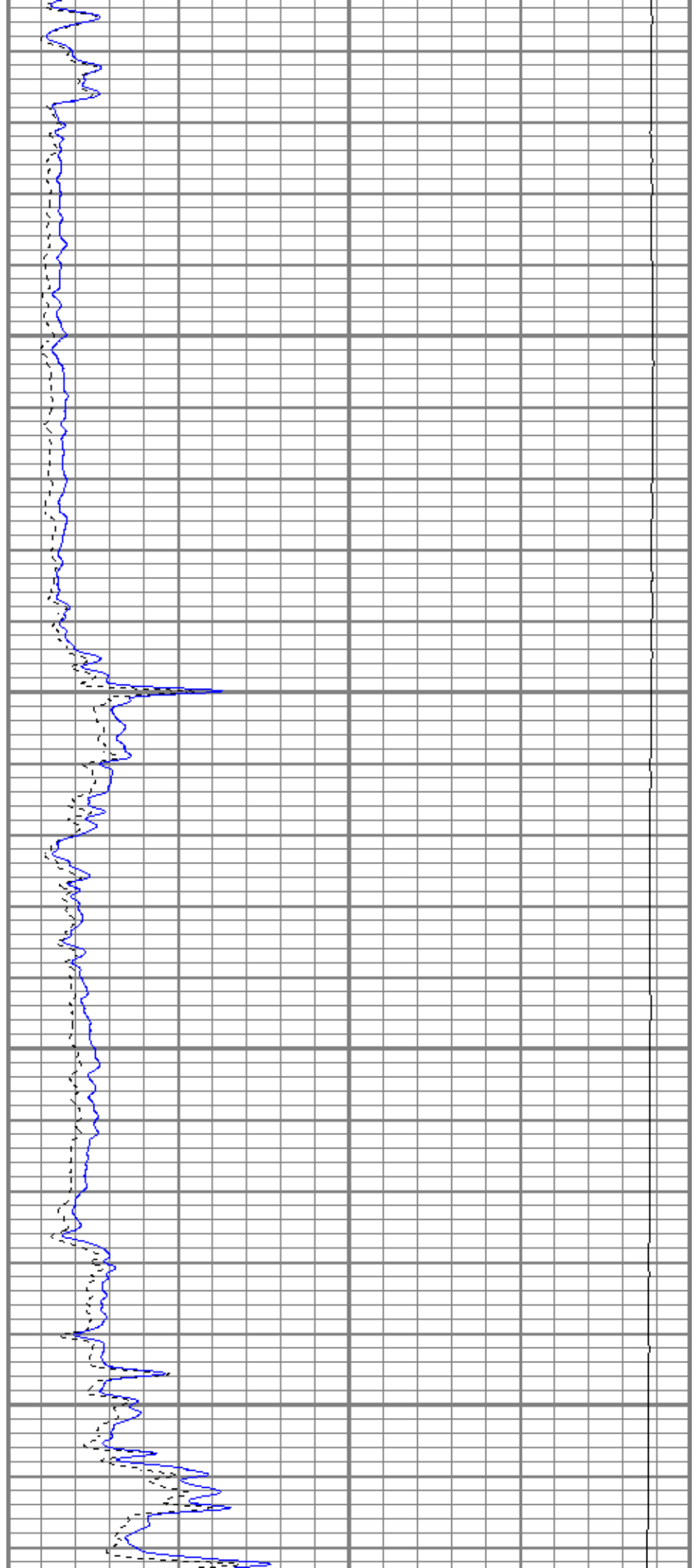


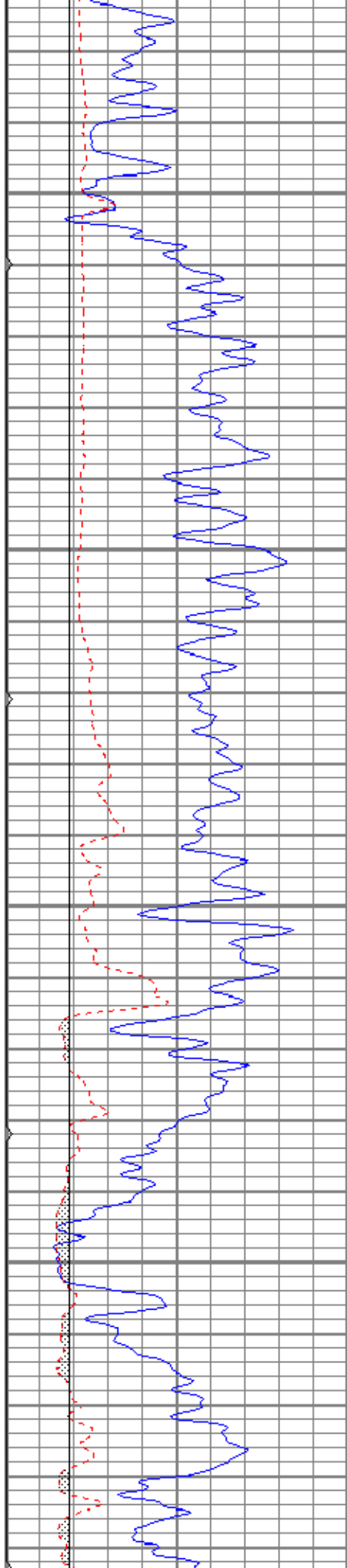
750

800

850

900



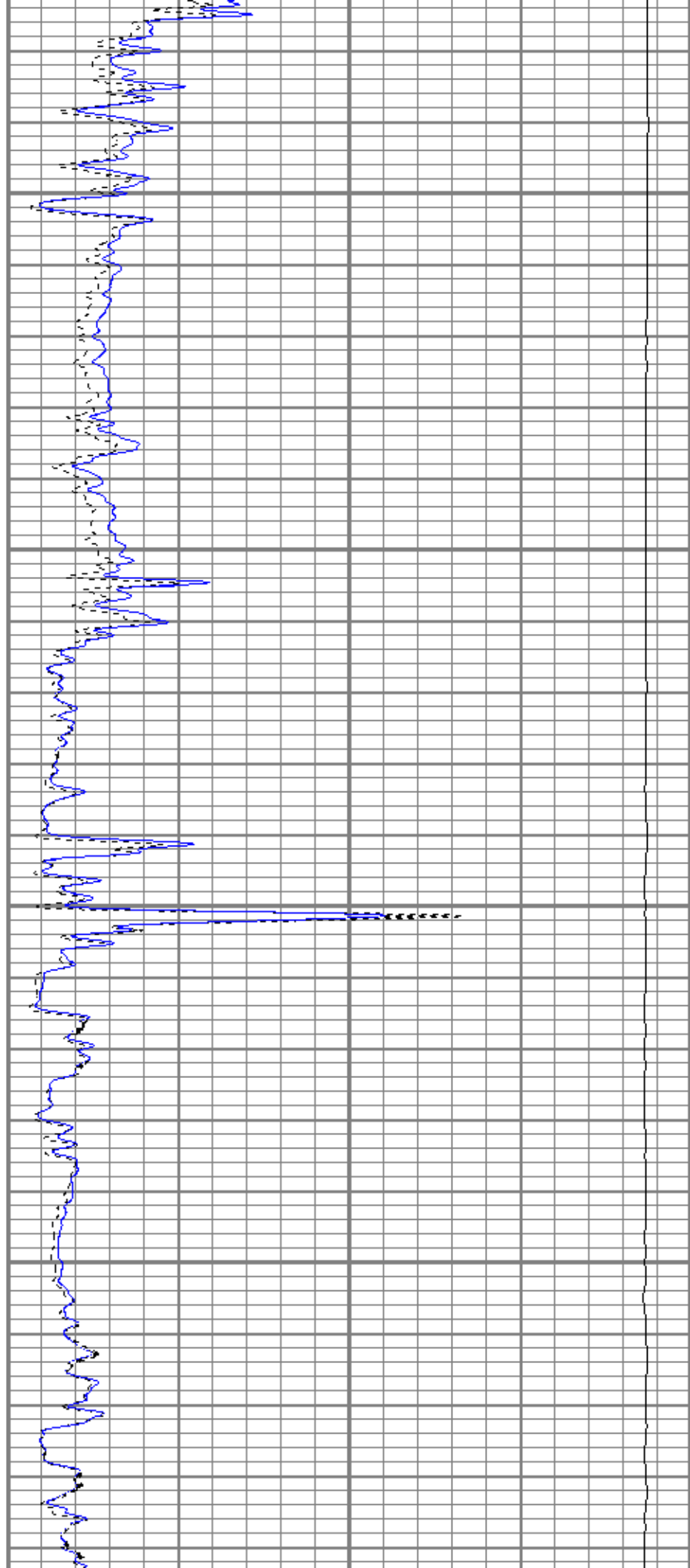


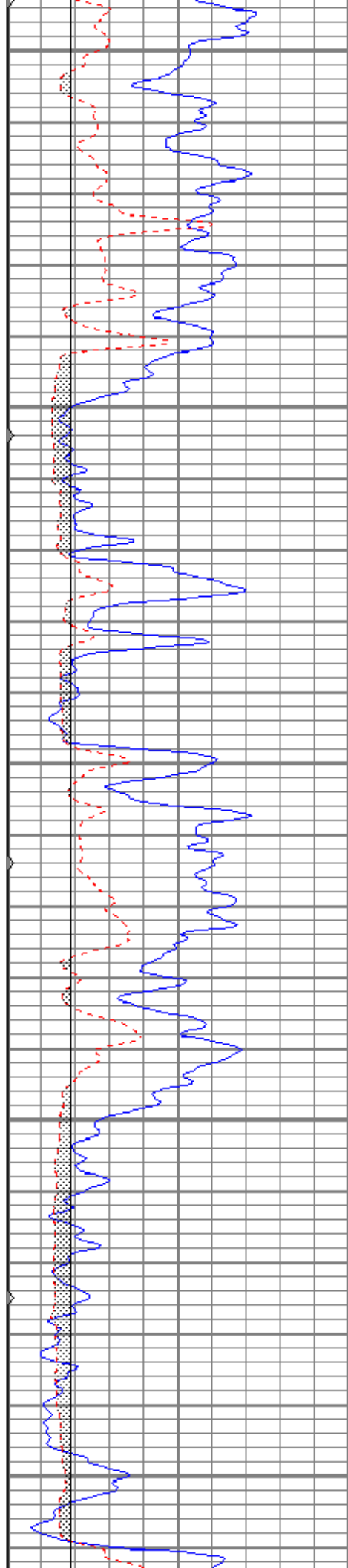
950

1000

1050

1100





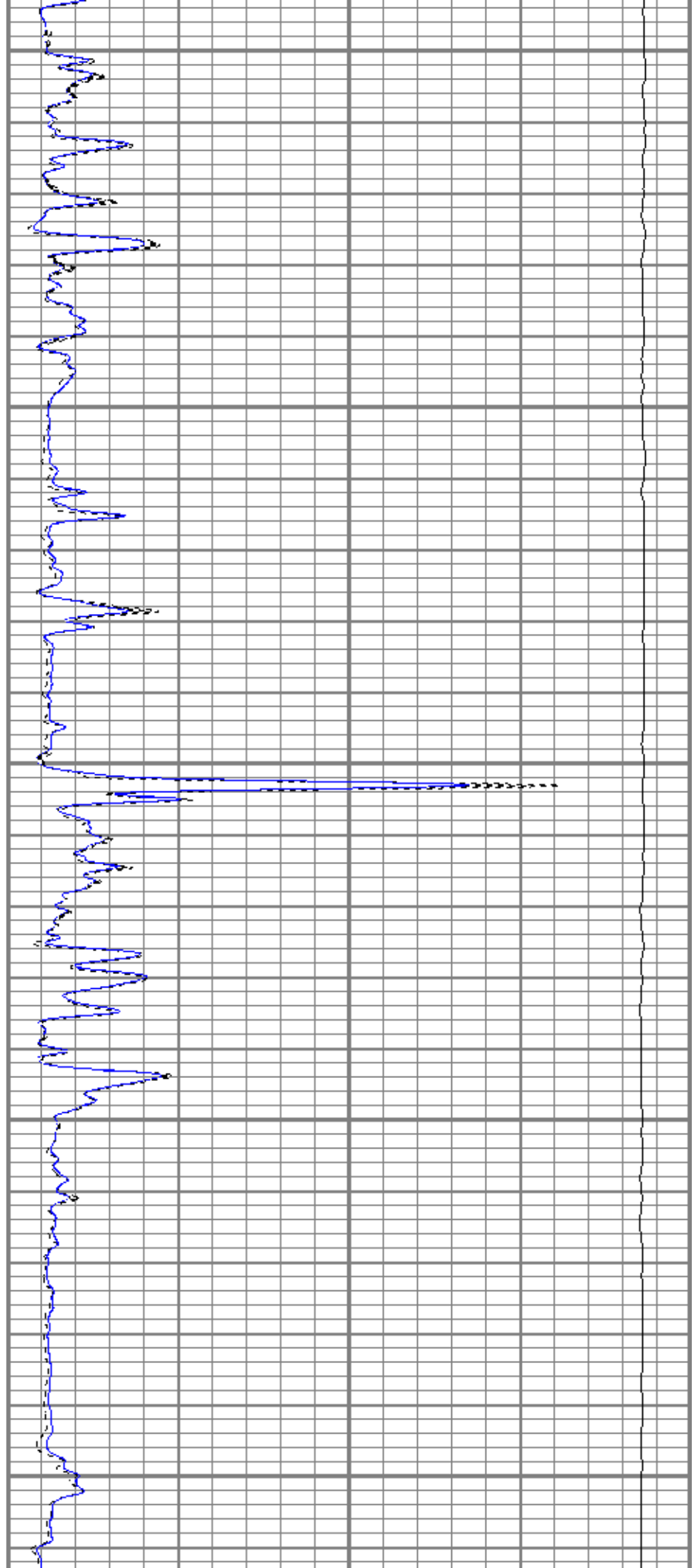
1150

1200

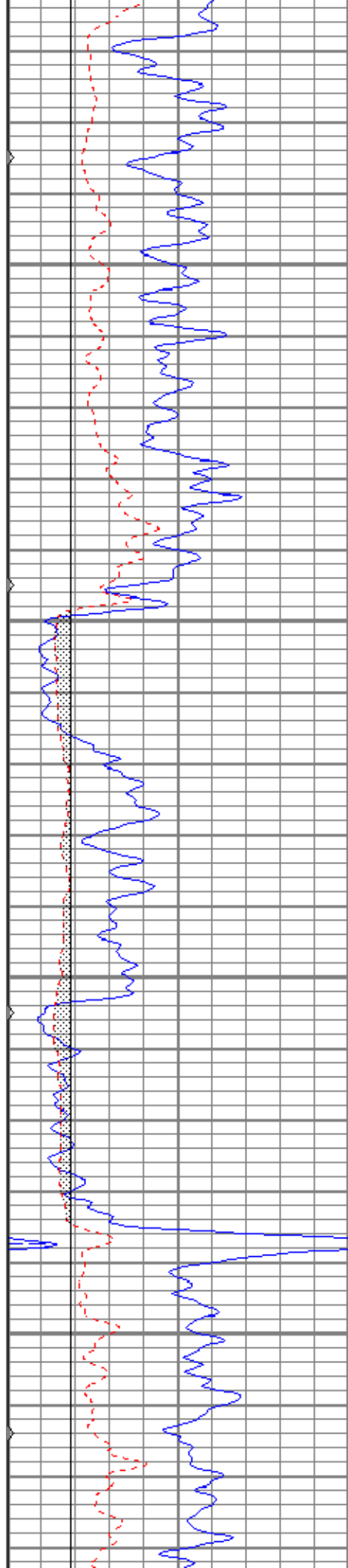
1250

1300

1350





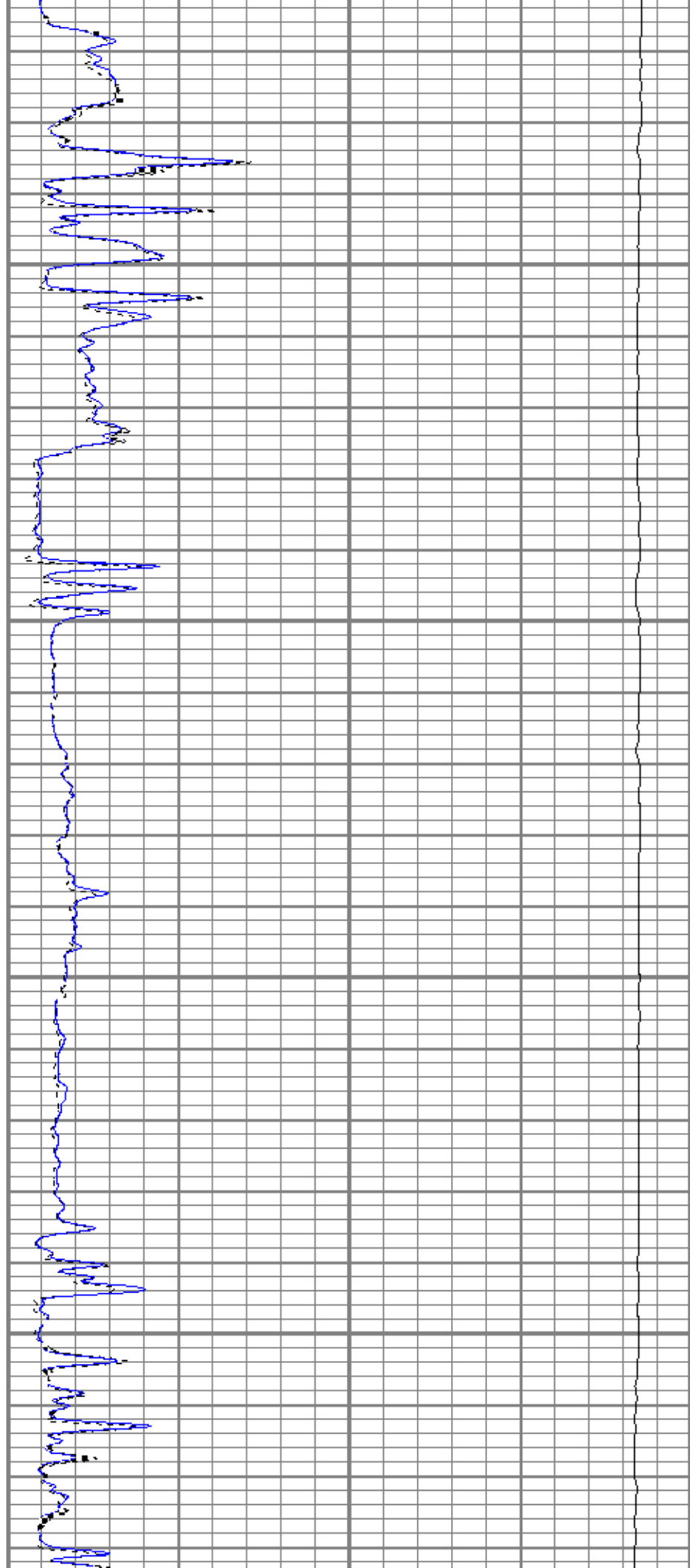


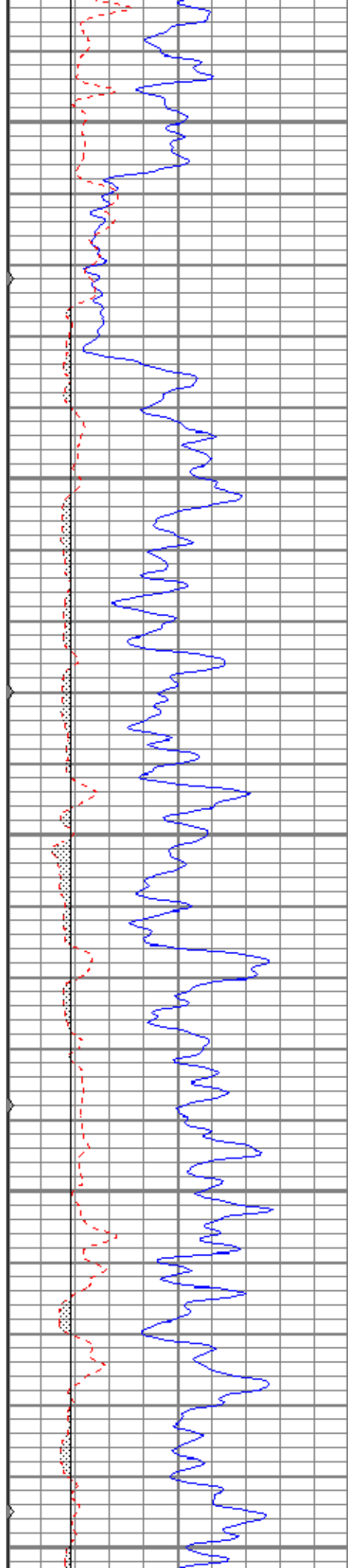
1400

1450

1500

1550





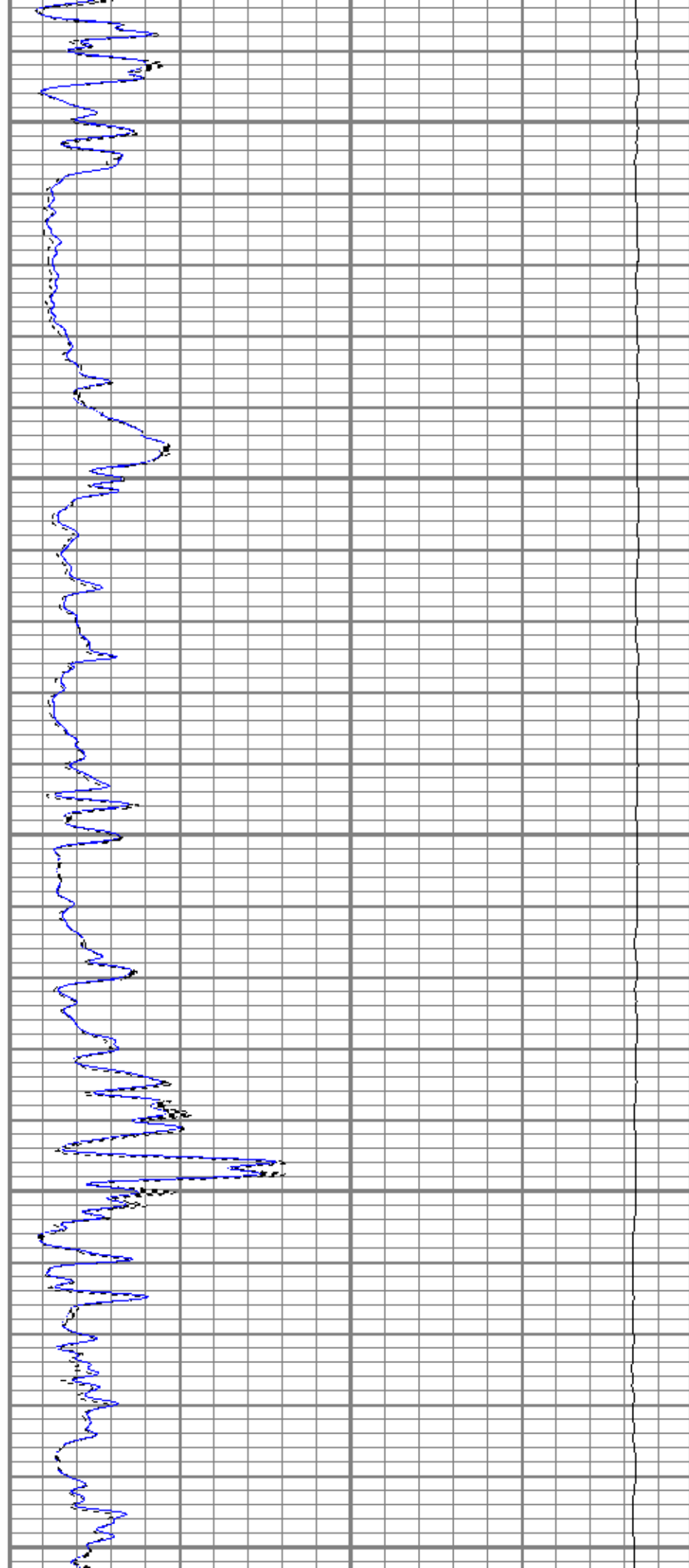
1600

1650

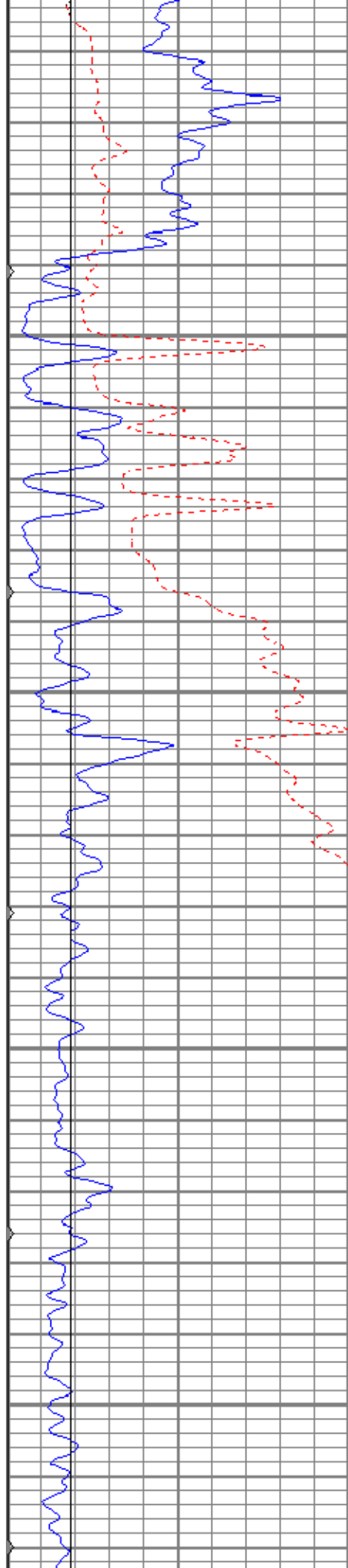
1700

1750

1800





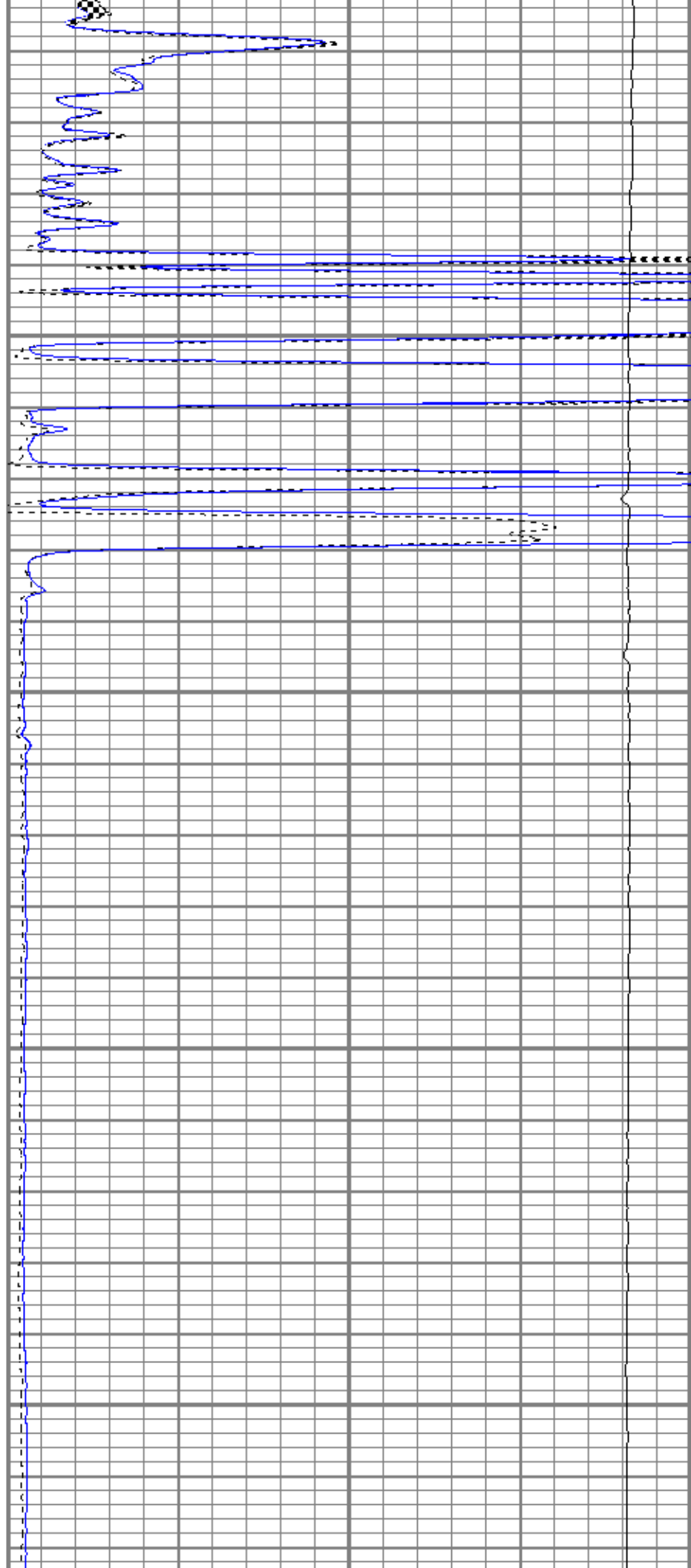


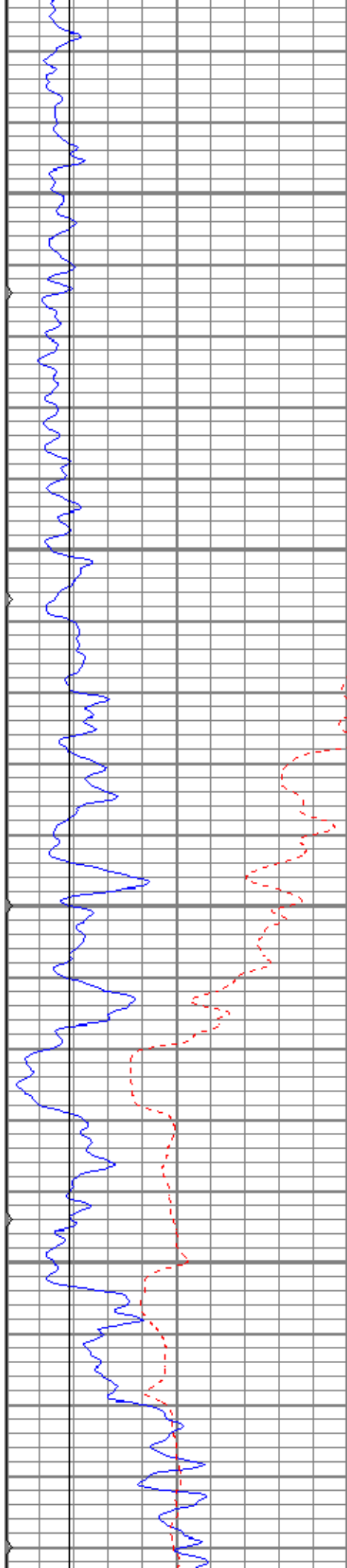
1850

1900

1950

2000



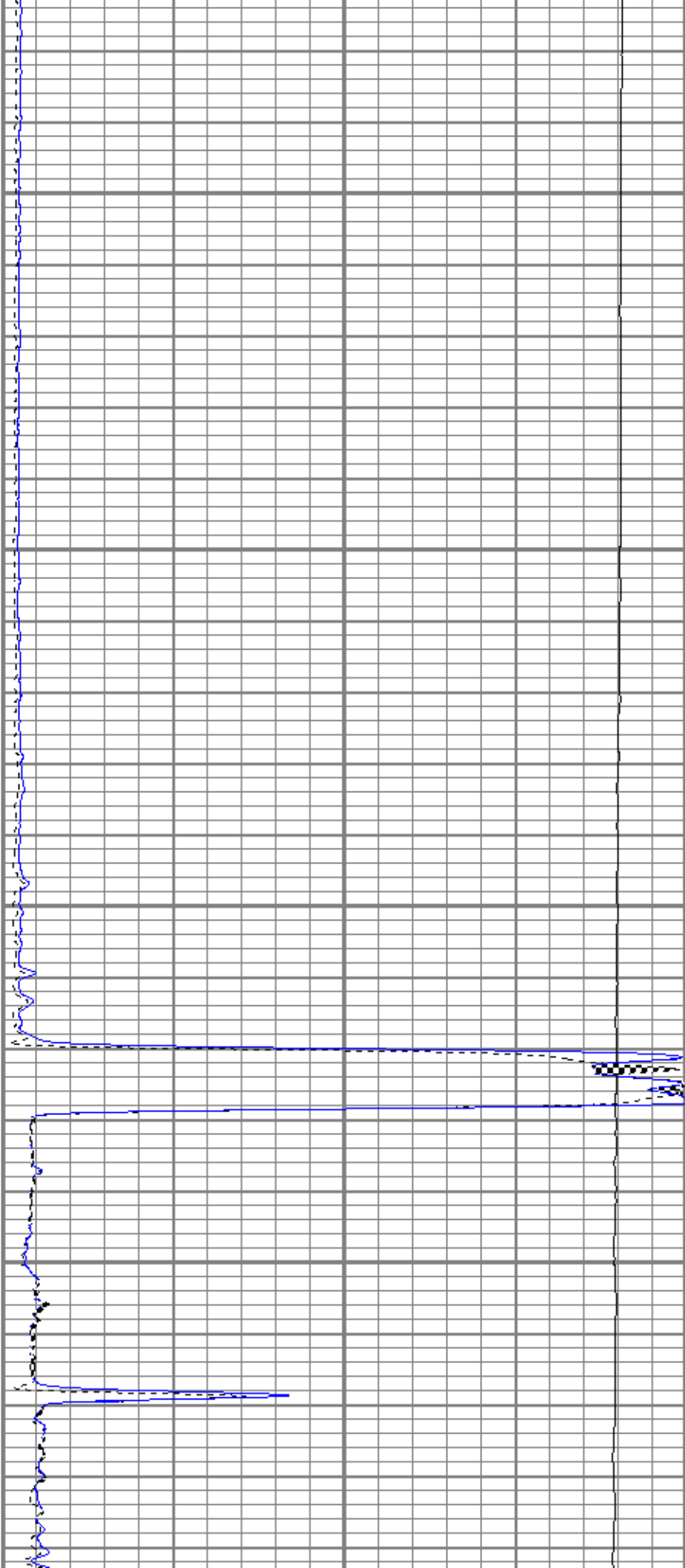


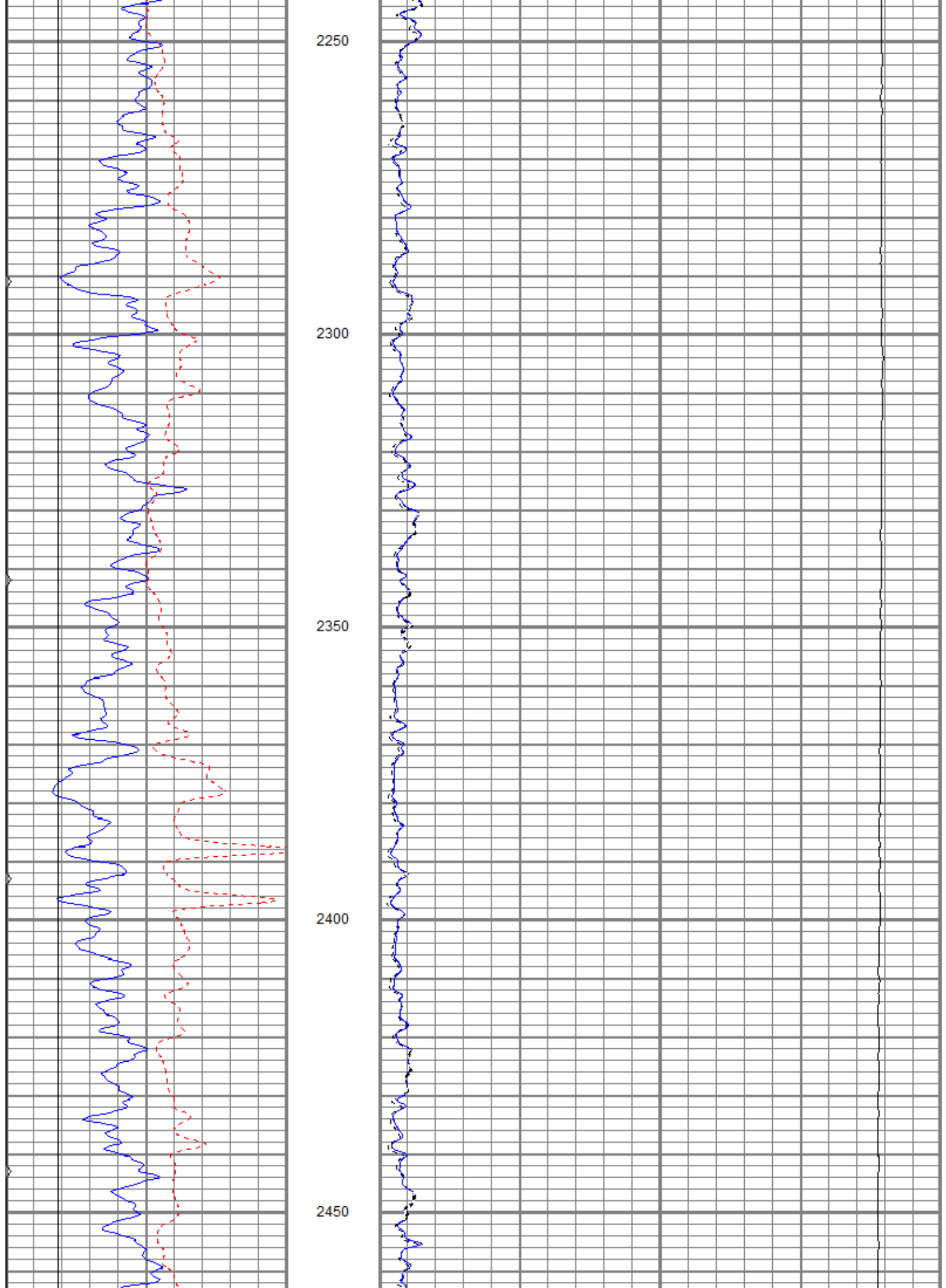
2050

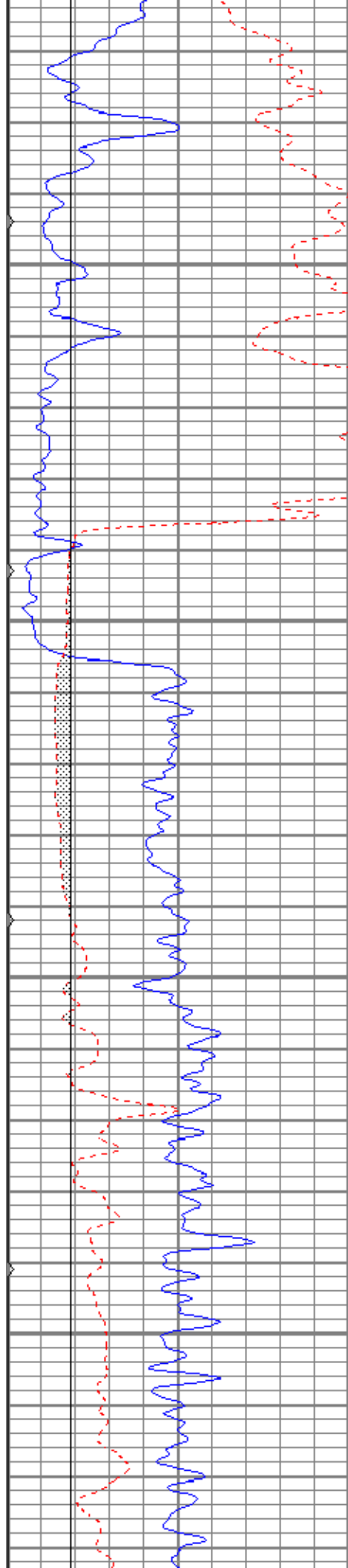
2100

2150

2200





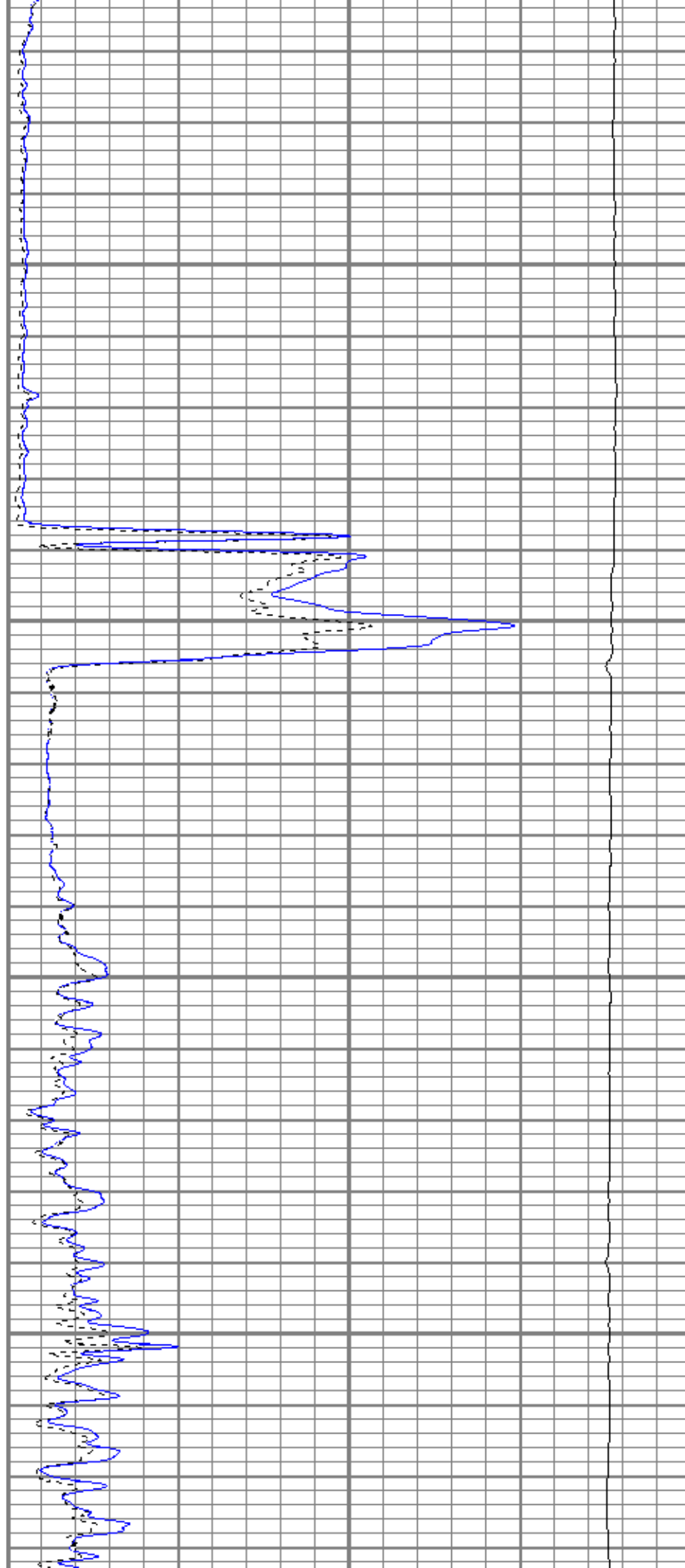


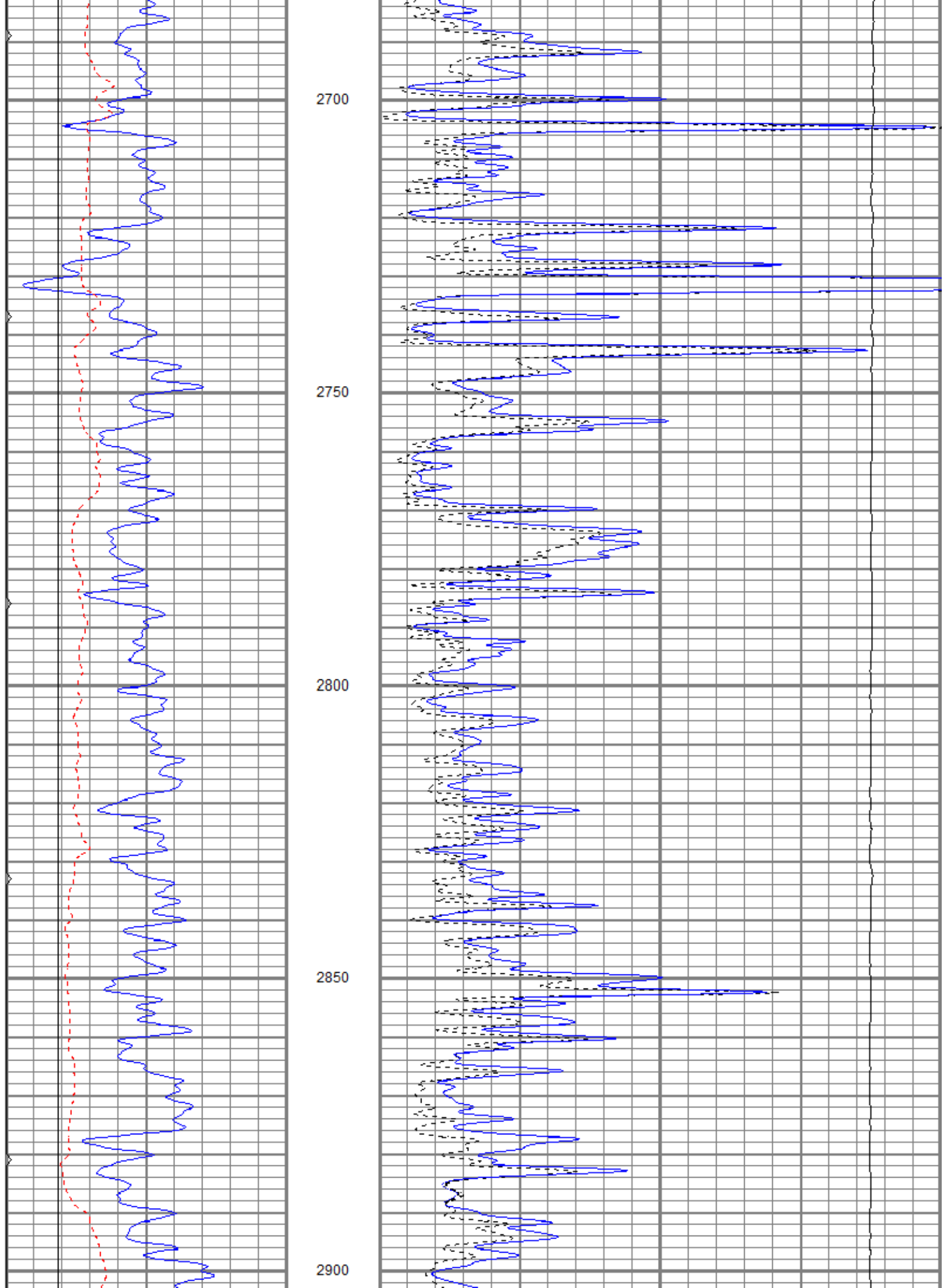
2500

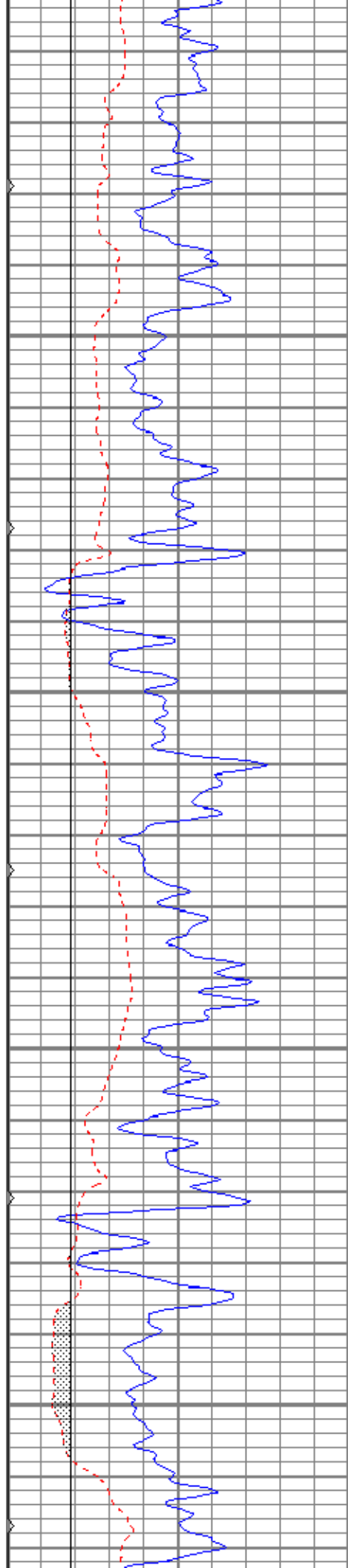
2550

2600

2650





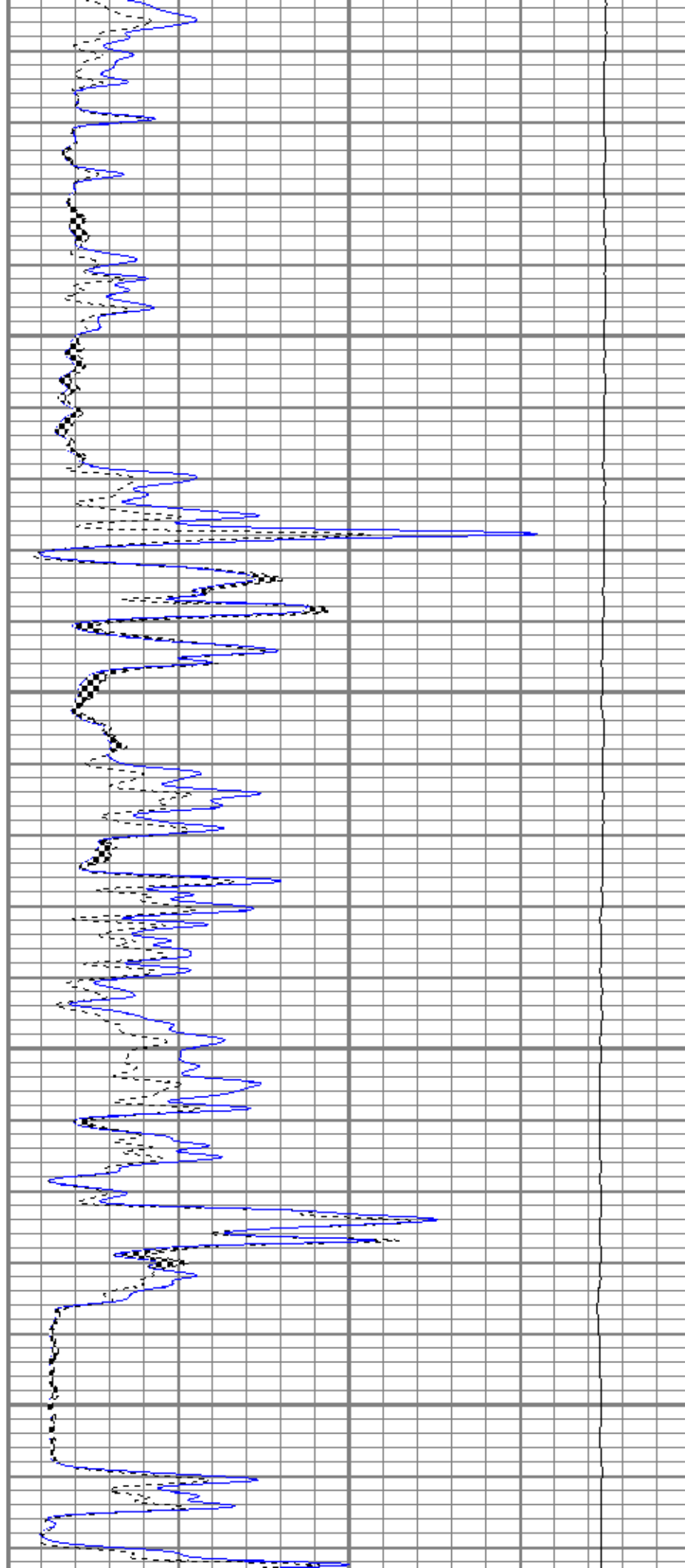


2950

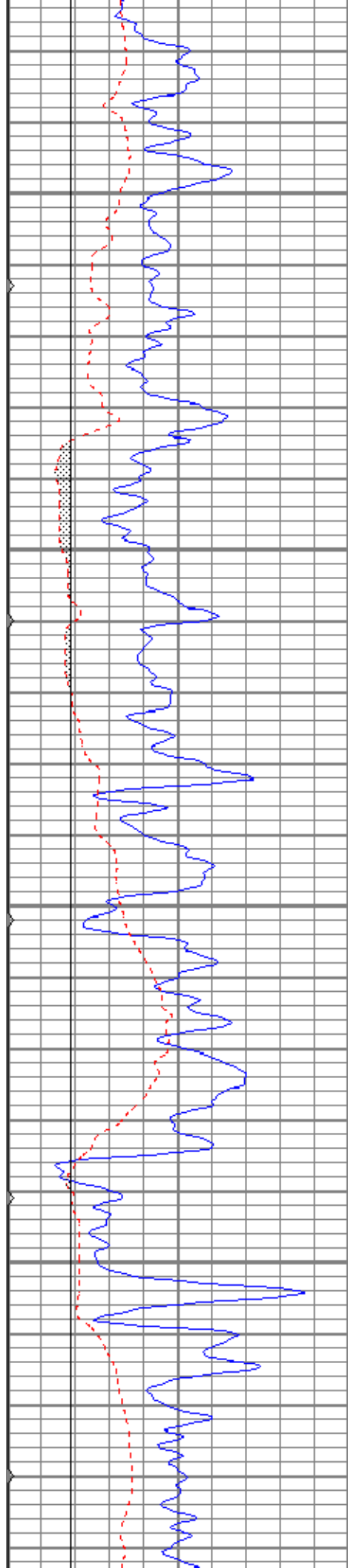
3000

3050

3100





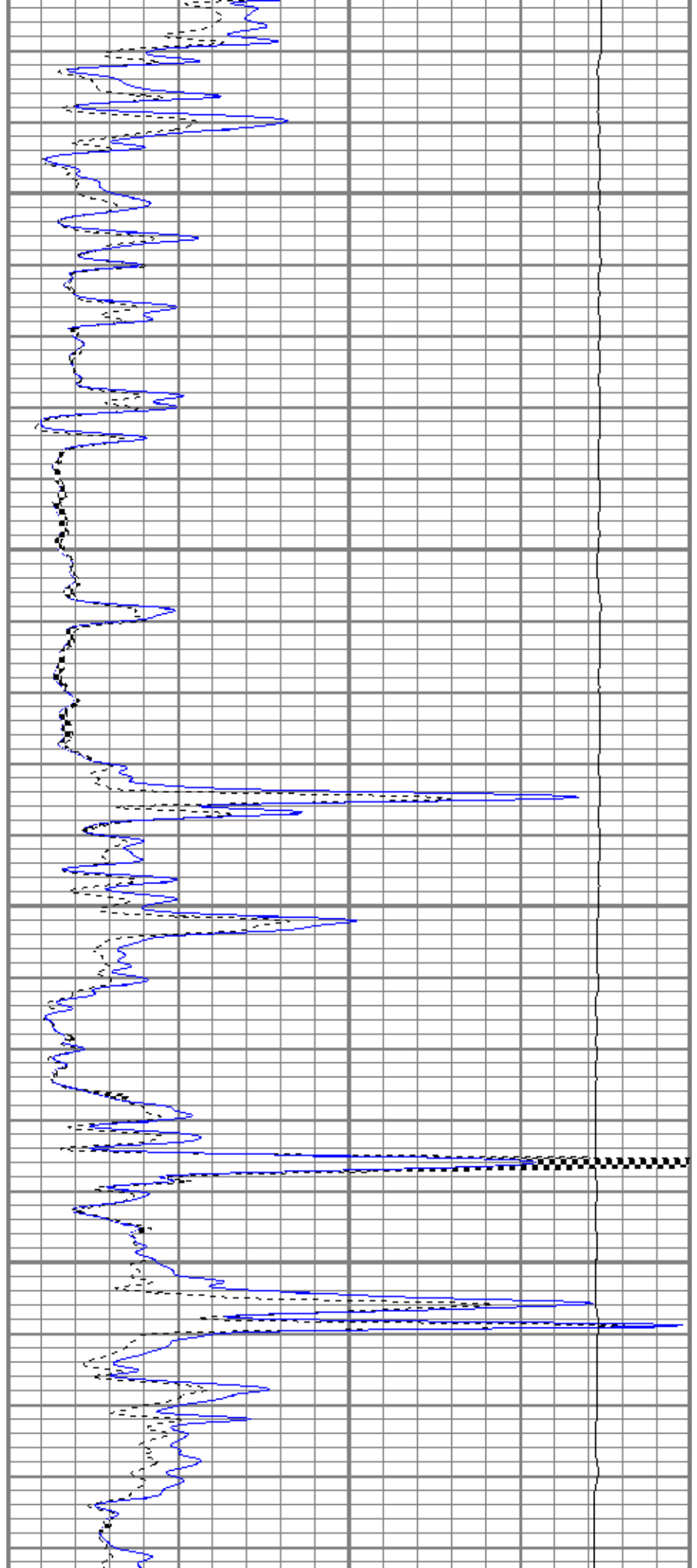


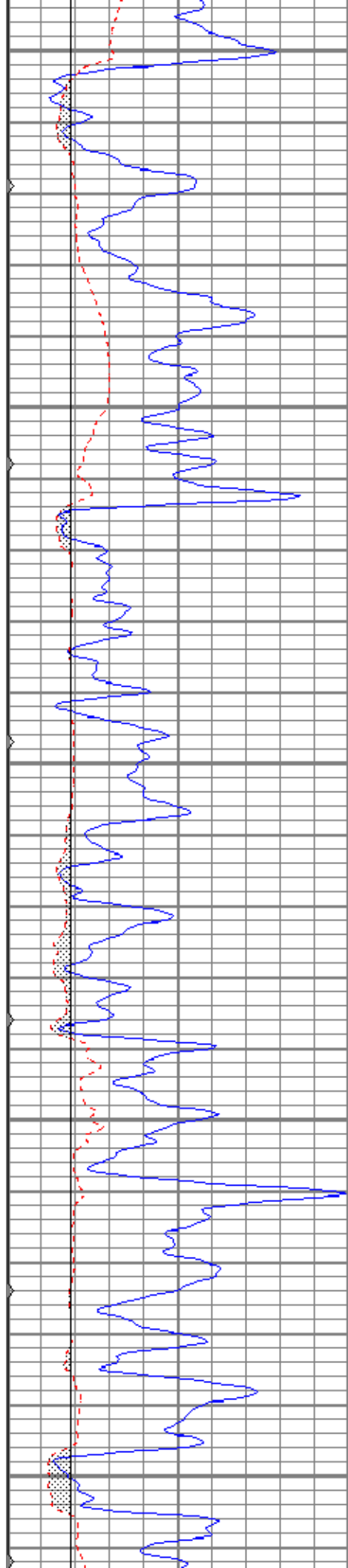
3150

3200

3250

3300





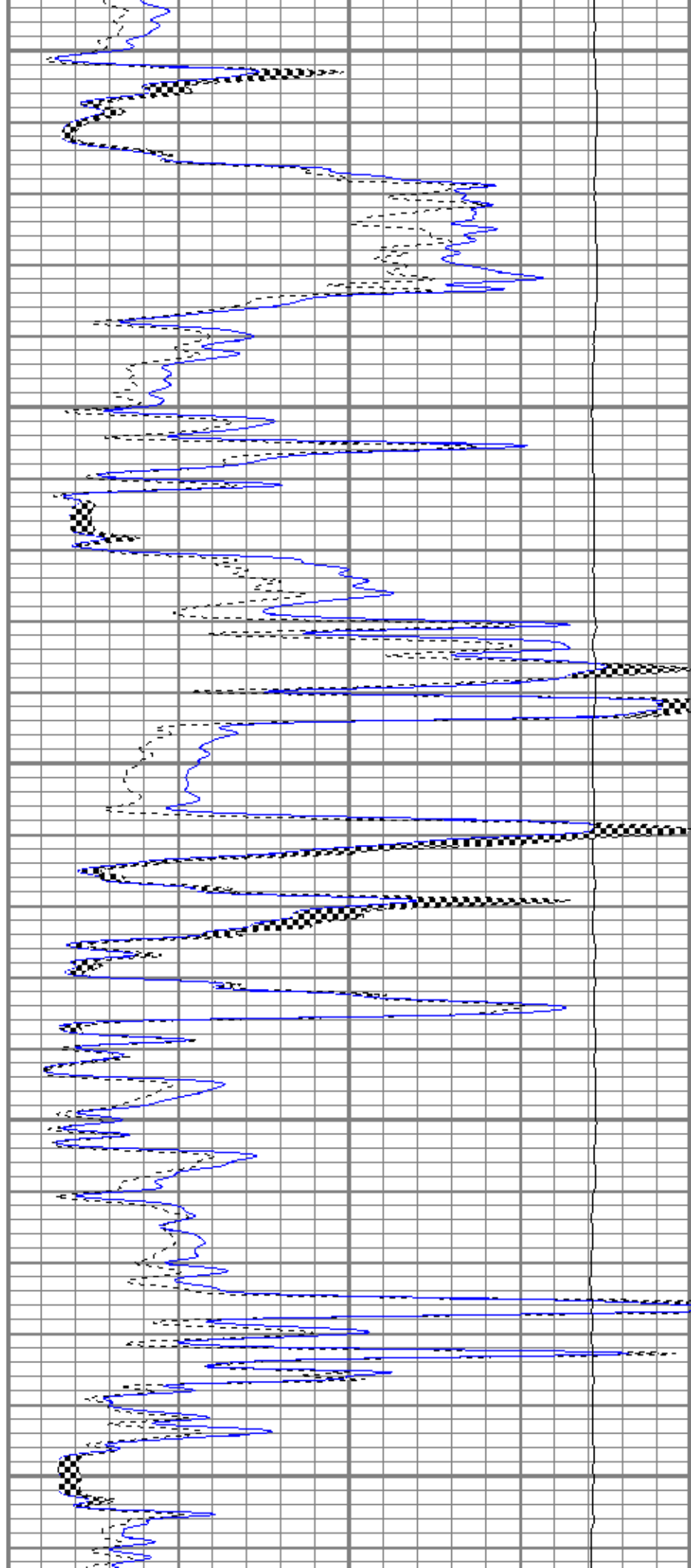
3350

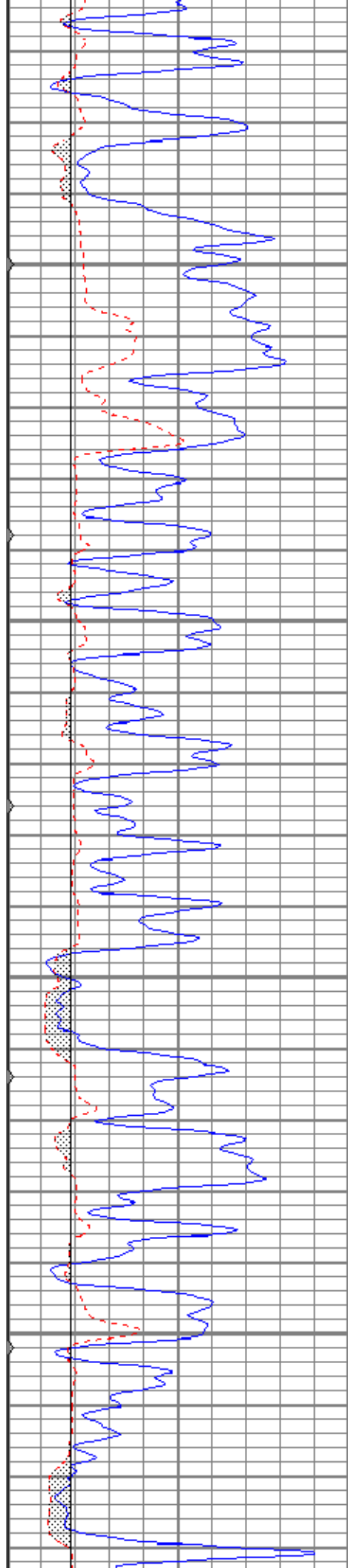
3400

3450

3500

3550



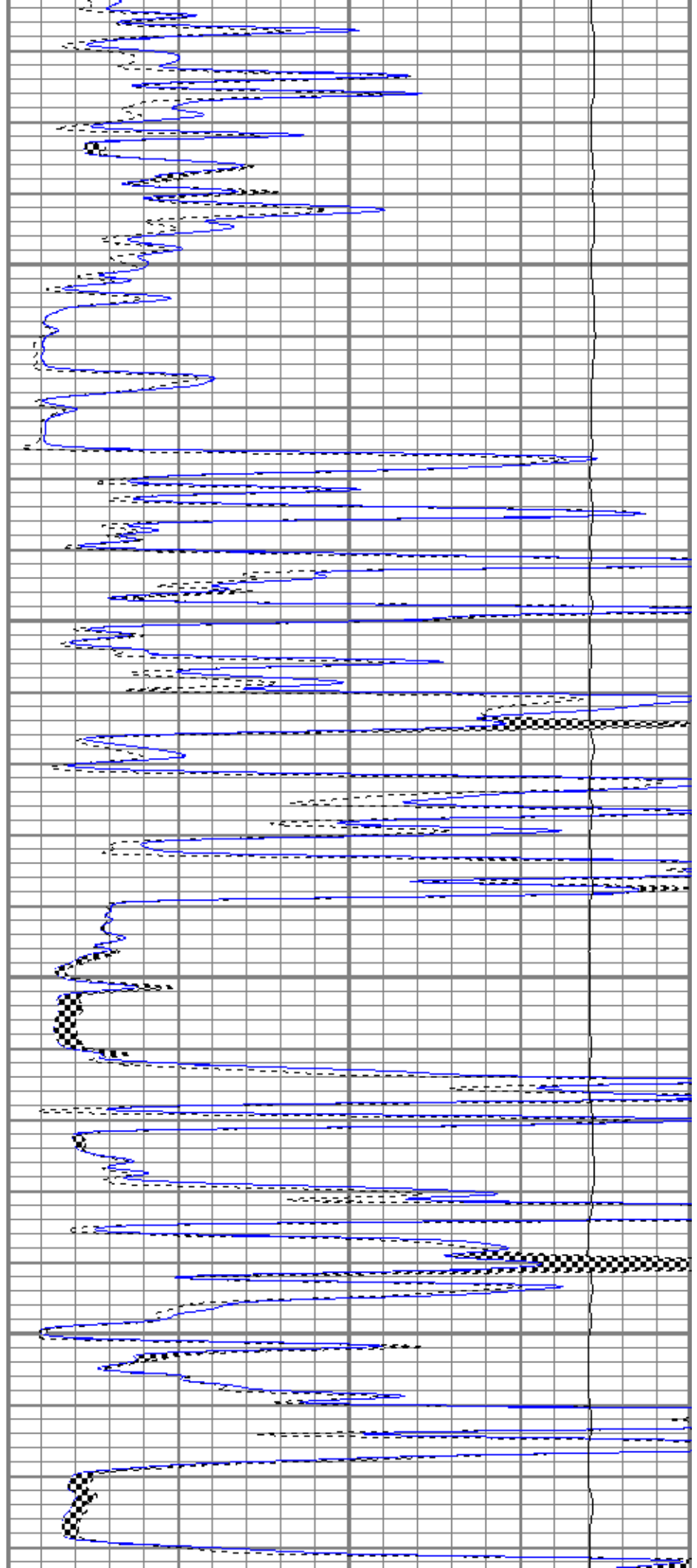


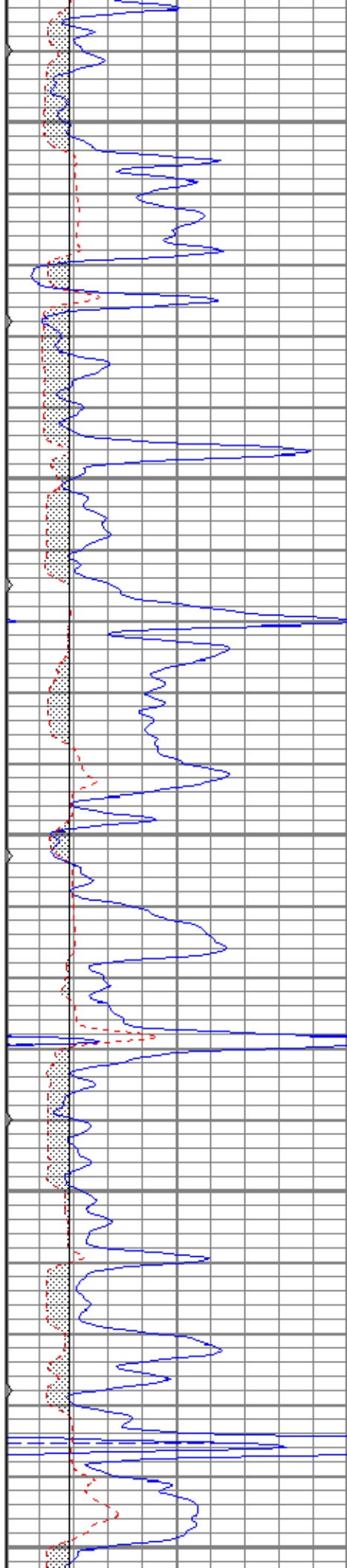
3600

3650

3700

3750





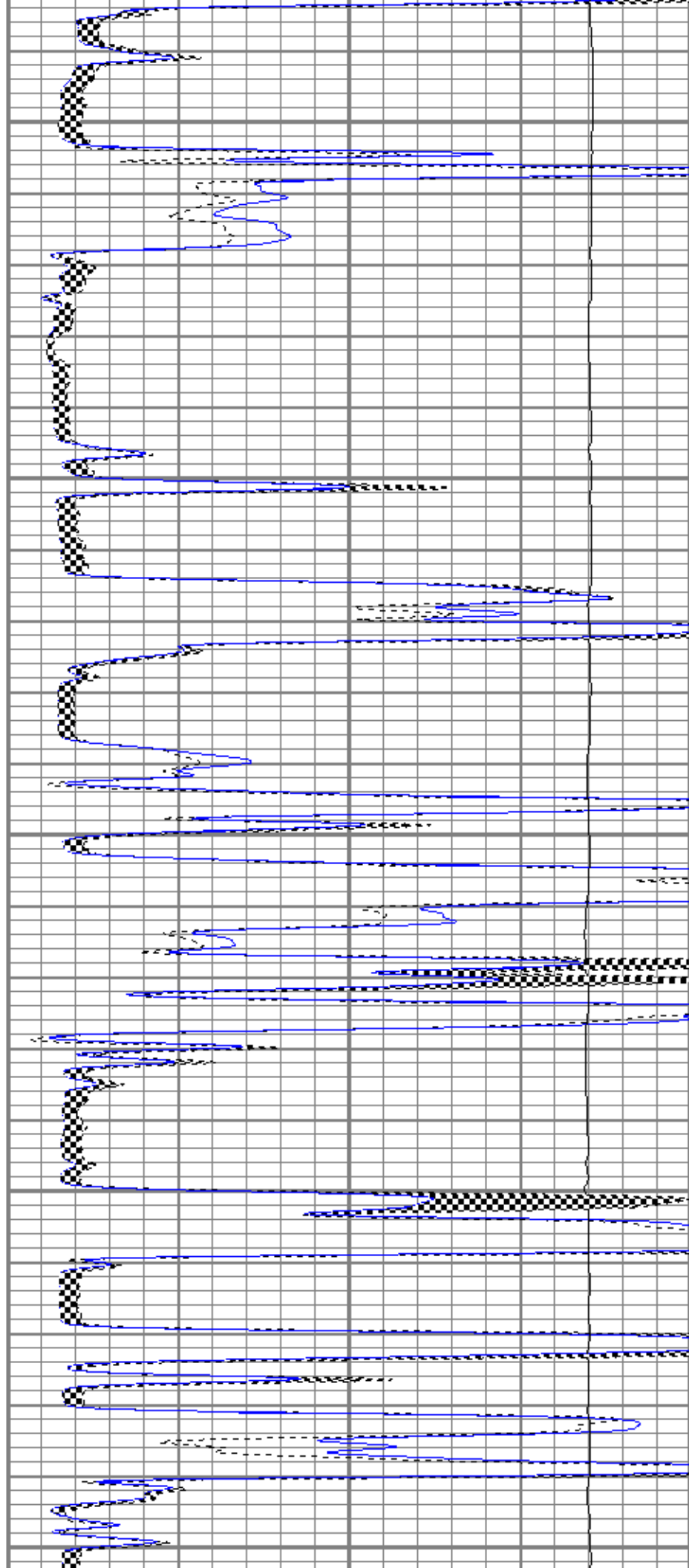
3800

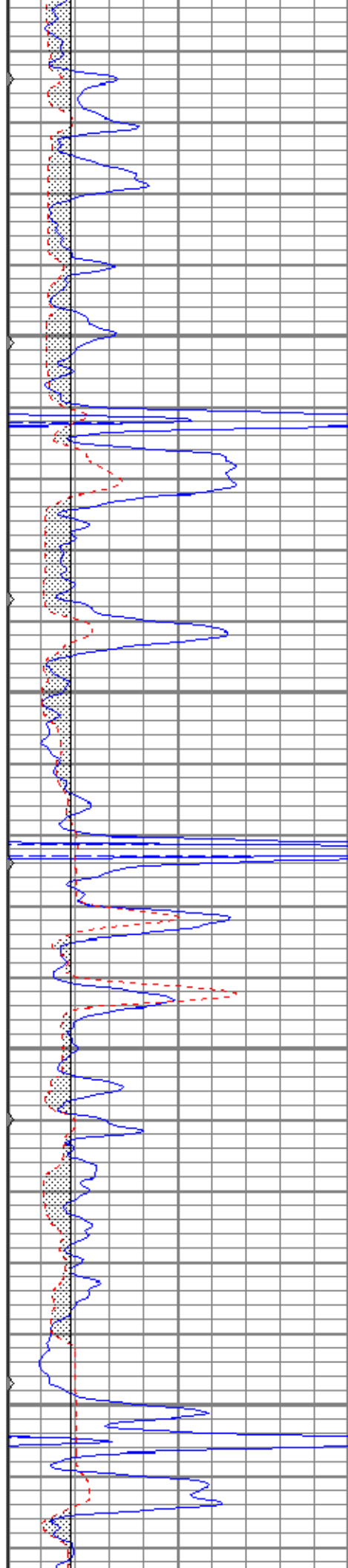
3850

3900

3950

4000



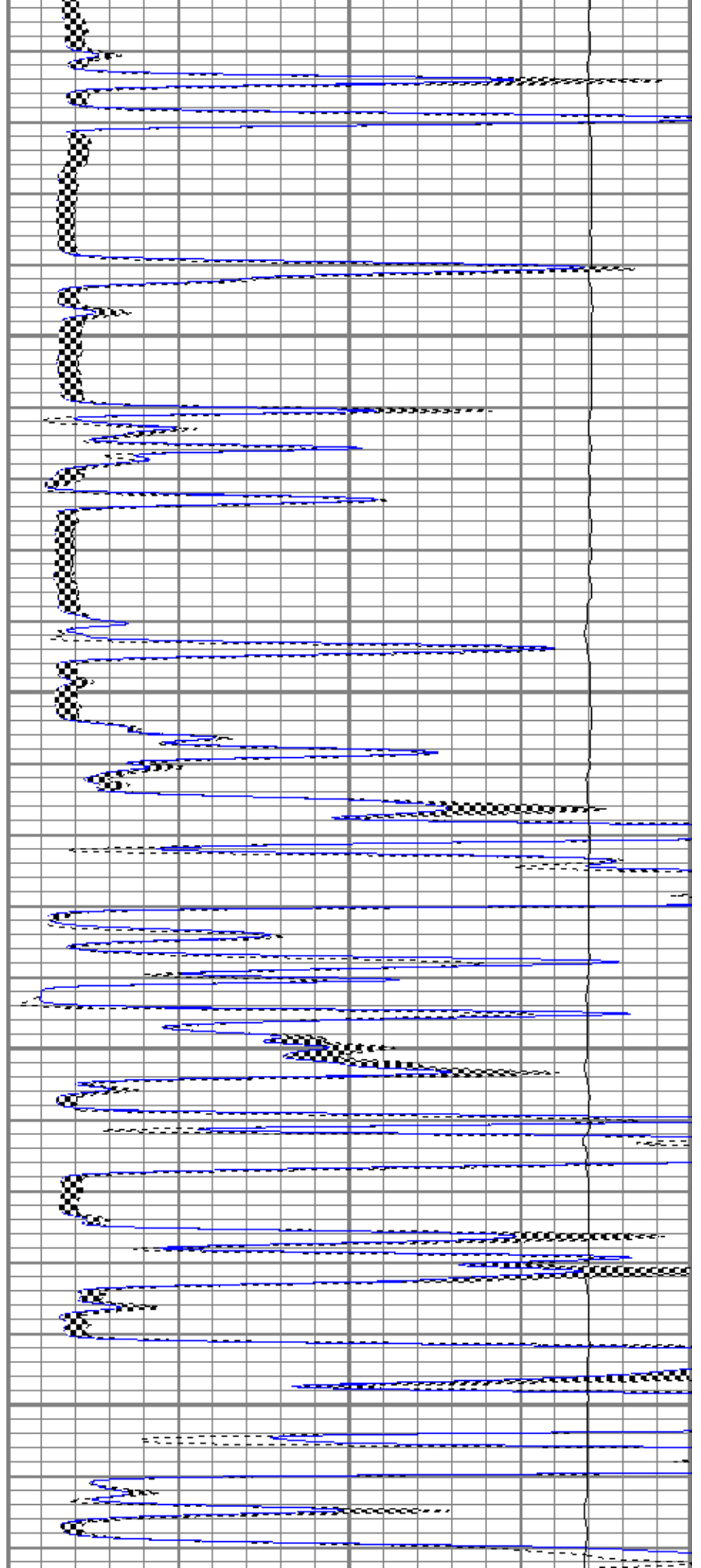


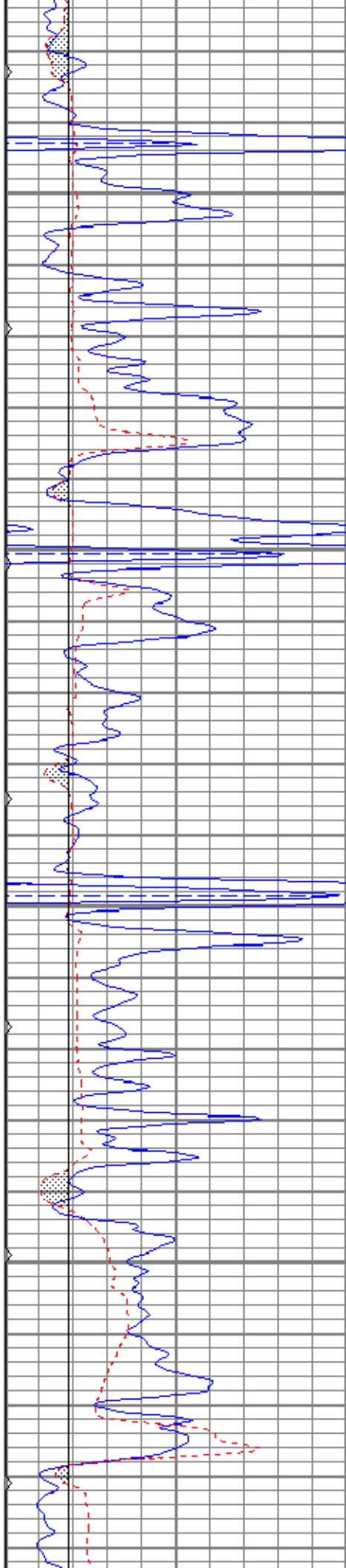
4050

4100

4150

4200



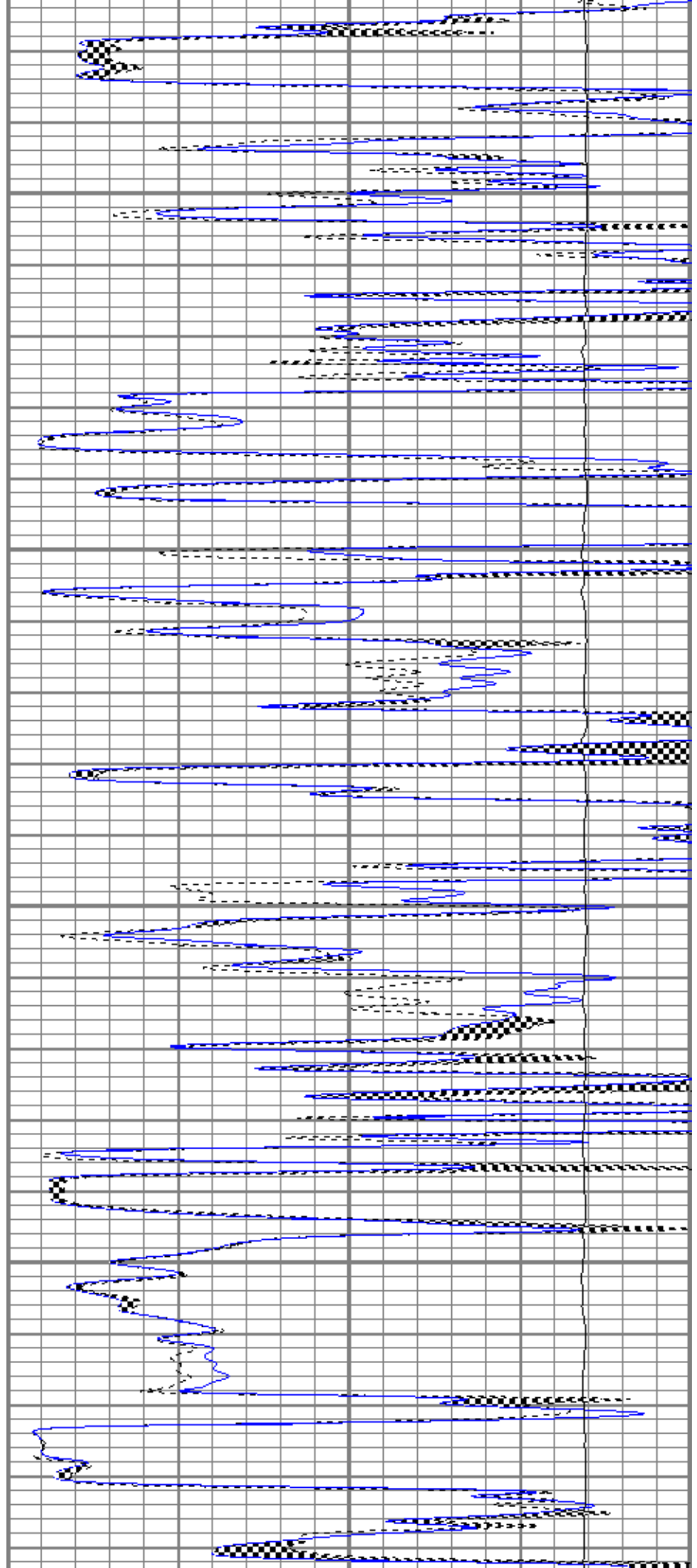


4250

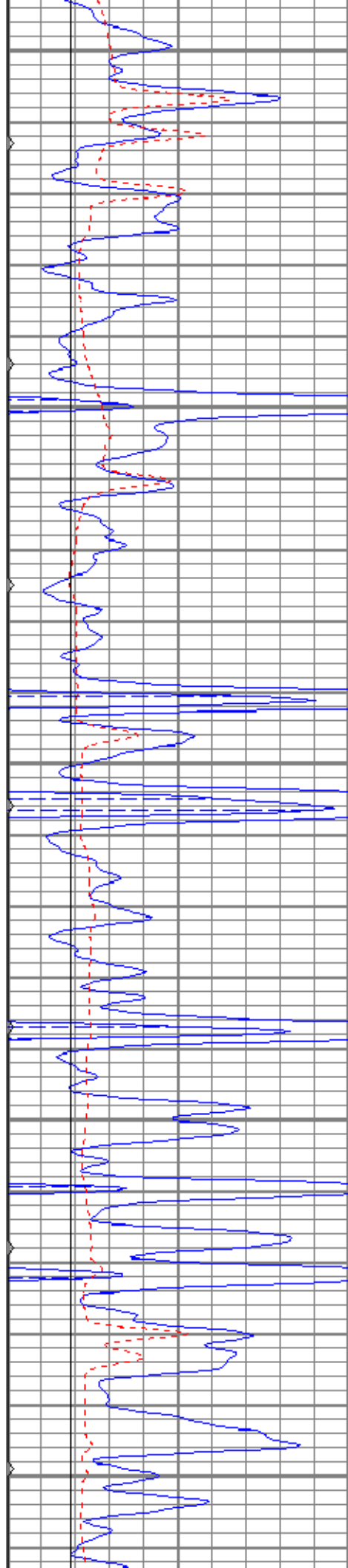
4300

4350

4400







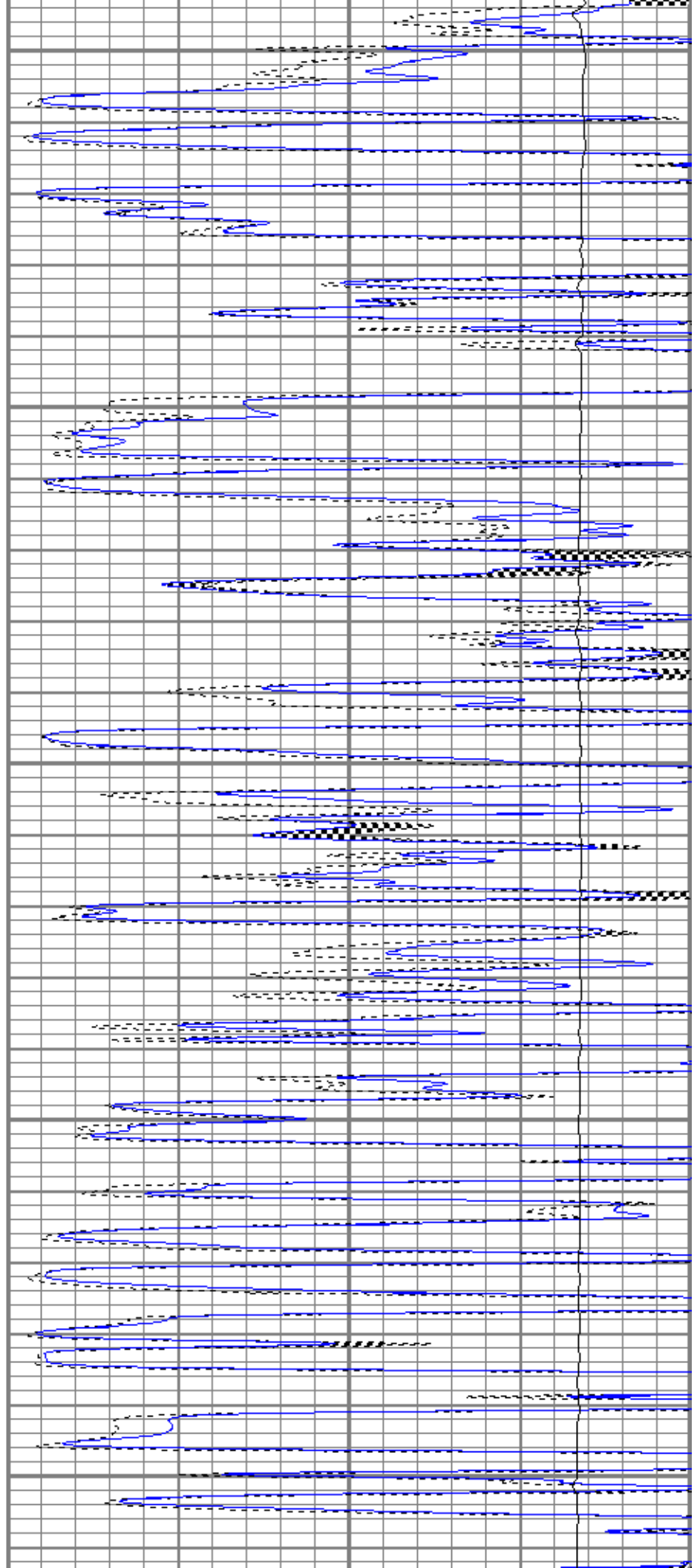
4450

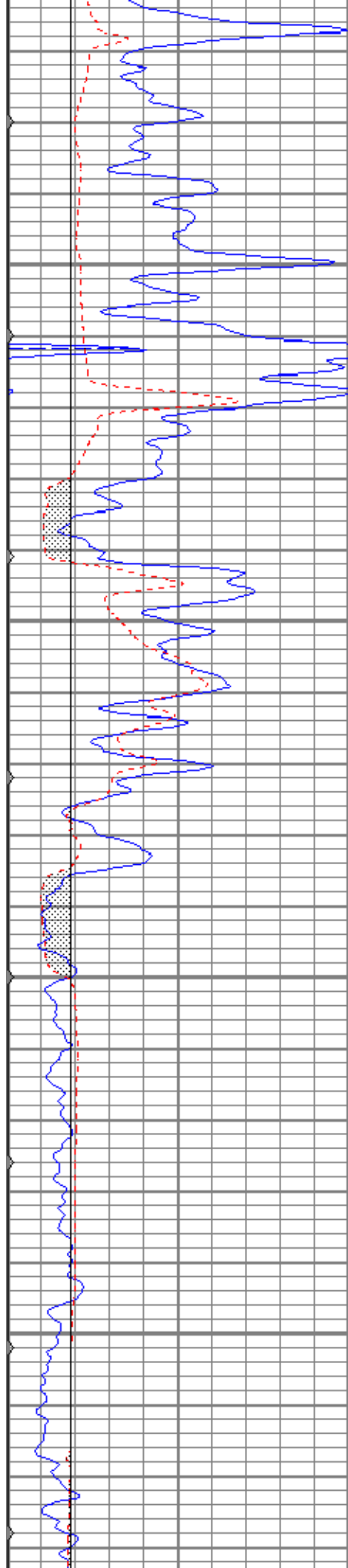
4500

4550

4600

4650



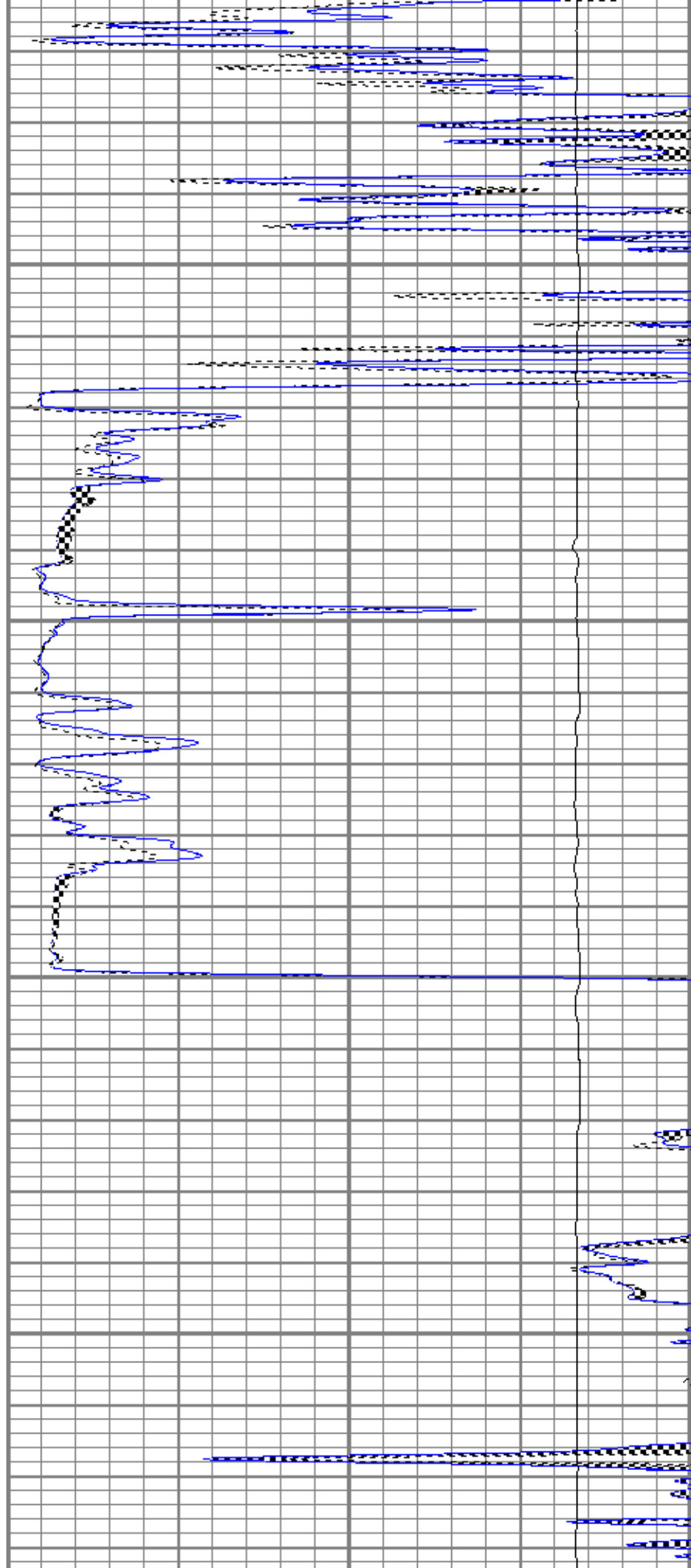


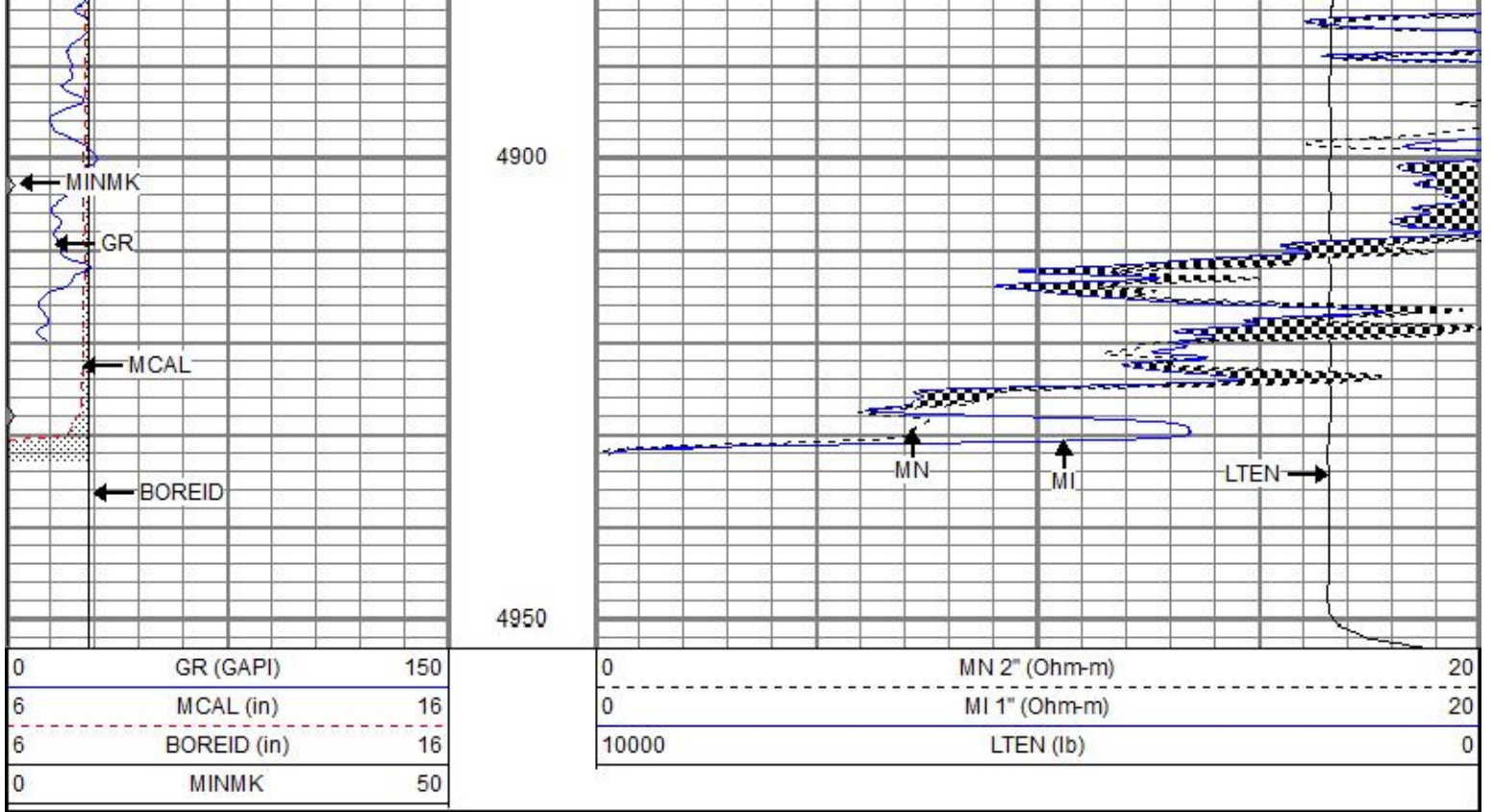
4700

4750

4800

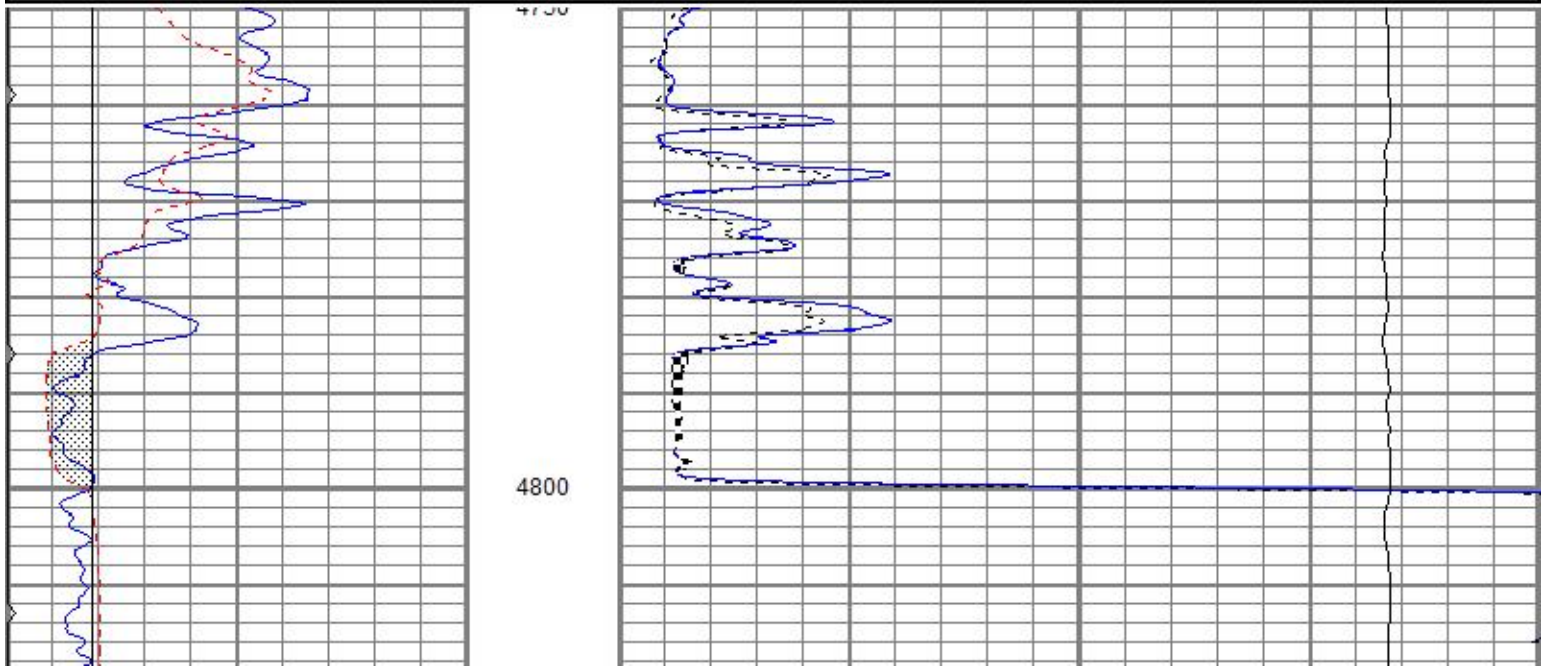
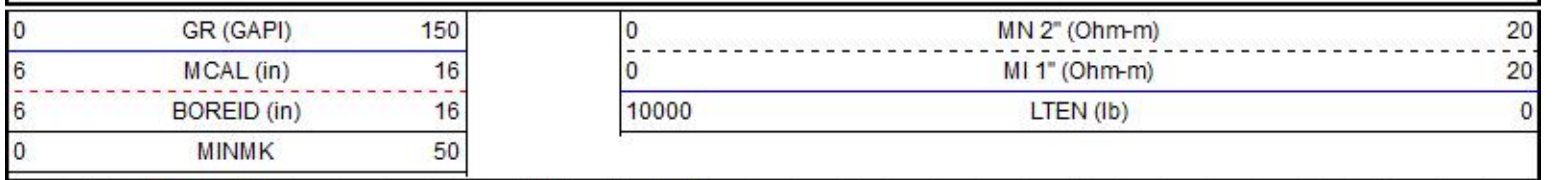
4850

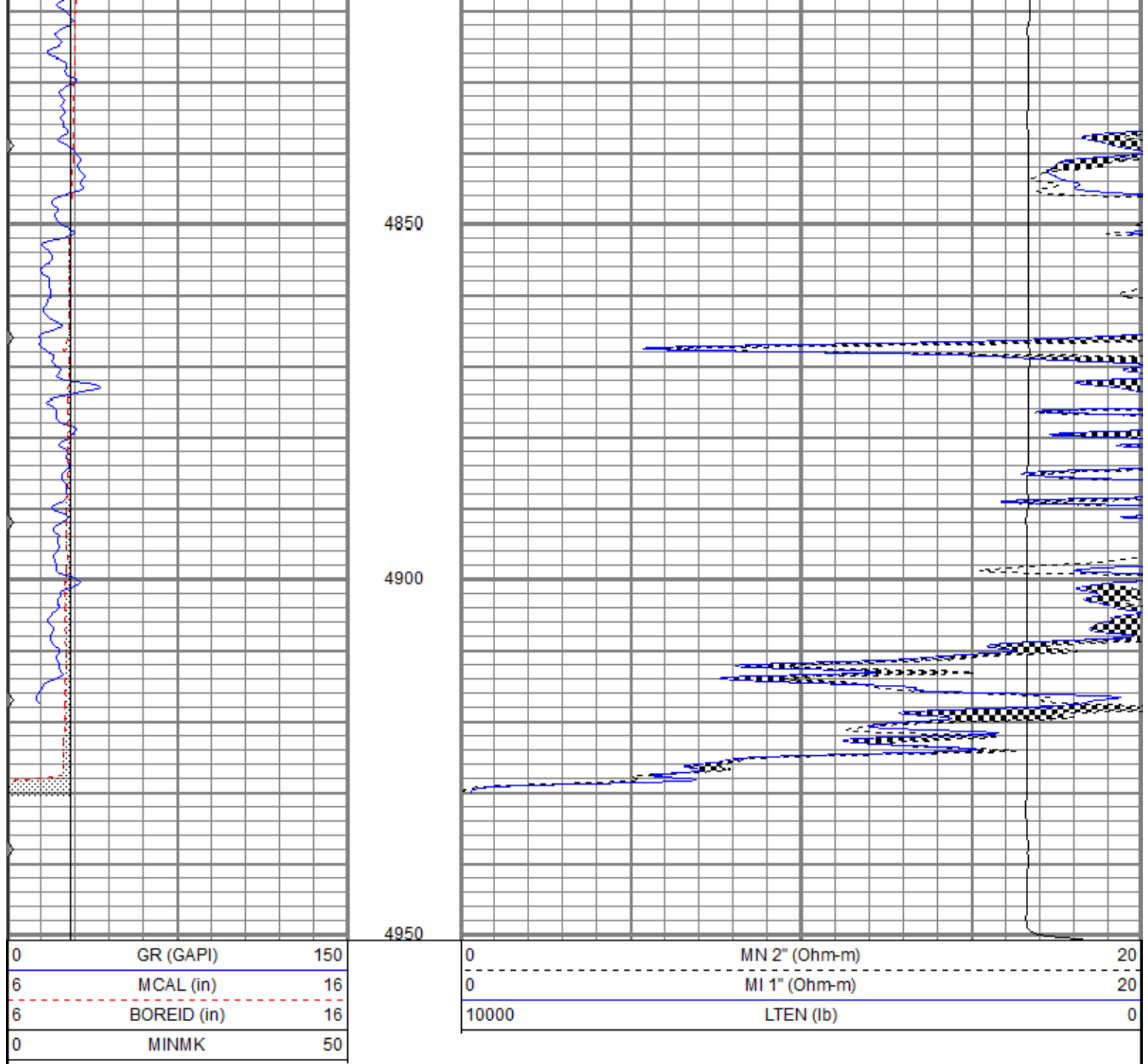




# REPEAT SECTION

Database File ppdirks#1oh.db  
 Dataset Pathname pass6.1  
 Presentation Format kml  
 Dataset Creation Wed Jul 18 16:03:47 2018  
 Charted by Depth in Feet scaled 1:240





**Calibration Report**

Database File    ppdirks#1oh.db  
 Dataset Pathname    pass7.1  
 Dataset Creation    Wed Jul 18 16:12:03 2018

**Microlog Calibration Report**

Serial-Model:                    9151-Gerhart  
 Performed:                      Wed Jul 18 14:08:44 2018

	Readings			References			Results	
	Zero	Cal		Zero	Cal		m	b
Normal	-0.0033	0.4785	V	0.0000	10.0000	Ohm-m	20.7554	0.0683
Inverse	-0.0202	0.6219	V	0.0000	9.5000	Ohm-m	14.7942	0.2992
Caliper	1.0212	2.0456	V	8.0000	15.0000	in	6.8332	1.0218

**Gamma Ray Calibration Report**

Serial Number:                    2001

Log Number: 2007  
 Tool Model: OH  
 Performed: Sun Nov 12 16:26:41 2017  
 Calibrator Value: 1.0 GAPI  
 Background Reading: 0.0 cps  
 Calibrator Reading: 1.0 cps  
 Sensitivity: 0.7000 GAPI/cps

Sensor	Offset (ft)	Schematic	Description	Length (ft)	O.D. (in)	Weight (lb)
			CHD-STD	0.50	1.69	1.00
GR	30.83		GR-OH (2001) 2001	3.56	3.25	40.00
			ML-Gerhart (9151) Gerhart Micro	9.46	4.00	125.00
MCAL	22.04					
MI	22.04					
MN	22.04					
WVF4	14.25					
WVF3	13.25					
WVF2	10.25					
WVF1	9.25					
			SLT-G (372) Sonic	15.71	3.50	250.00
			CENT-OHlong Open Hole long Centralizer	4.50	3.50	50.00

Dataset: ppdirks#1oh.db: field/well/run1/pass7.1  
 Total length: 33.73 ft  
 Total weight: 466.00 lb  
 O.D.: 4.00 in