



**MICRO
RESISTIVITY
LOG**

Company John O. Farmer, Inc.
Well Nielsen #1
Field Wildcat
County Lyon
State KS

Company John O. Farmer, Inc.
Well Nielsen #1
Field Wildcat
County Lyon State KS

Location: API #: 15 111 20536
215' FSL & 420' FWL

SEC 25 TWP 16S RGE 10E
Permanent Datum Ground Level Elevation 1332'
Log Measured From KB 8' AGL
Drilling Measured From KB

Other Services
DIL
CDNL
Elevation
K.B. 1340'
D.F. 1339'
G.L. 1332'

Date	5-9-18
Run Number	TWO
Depth Driller	3200'
Depth Logger	3199'
Bottom Logged Interval	3197'
Top Log Interval	2400'
Casing Driller	8 5/8" @ 220'
Casing Logger	220'
Bit Size	7 7/8"
Type Fluid in Hole	Chemical Mud
Density / Viscosity	9.3/43
PH / Fluid Loss	10.5/9.6
Source of Sample	Pit
Rm @ Meas. Temp	2.6@88degf
Rmf @ Meas. Temp	2.1@88degf
Rmc @ Meas. Temp	3.33@88degf
Source of Rmf / Rmc	Calculated
Rm @ BHT	2.12@108degf
Time Circulation Stopped	7:30 p.m
Time Logger on Bottom	11:15 p.m
Maximum Recorded Temperature	108degf
Equipment Number	T127
Location	Hays, KS.
Recorded By	C.Patterson
Witnessed By	Mr. Austin Klaus

<<< Fold Here >>>

All interpretations are opinions based on inferences from electrical or other measurements and we cannot and do not guarantee the accuracy or correctness of any interpretation, and we shall not, except in the case of gross or willful negligence on our part, be liable or responsible for any loss, costs, damages, or expenses incurred or sustained by anyone resulting from any interpretation made by any of our officers, agents or employees. These interpretations are also subject to our general terms and conditions set out in our current Price Schedule.

Comments

East out of Council Grove 12 mi. to F Rd., South on F Rd. 2.6 mi. to Rd.320,
East on Rd, 320 for 10 yards, North into

Thank you for using Gemini Wireline
785-625-1182

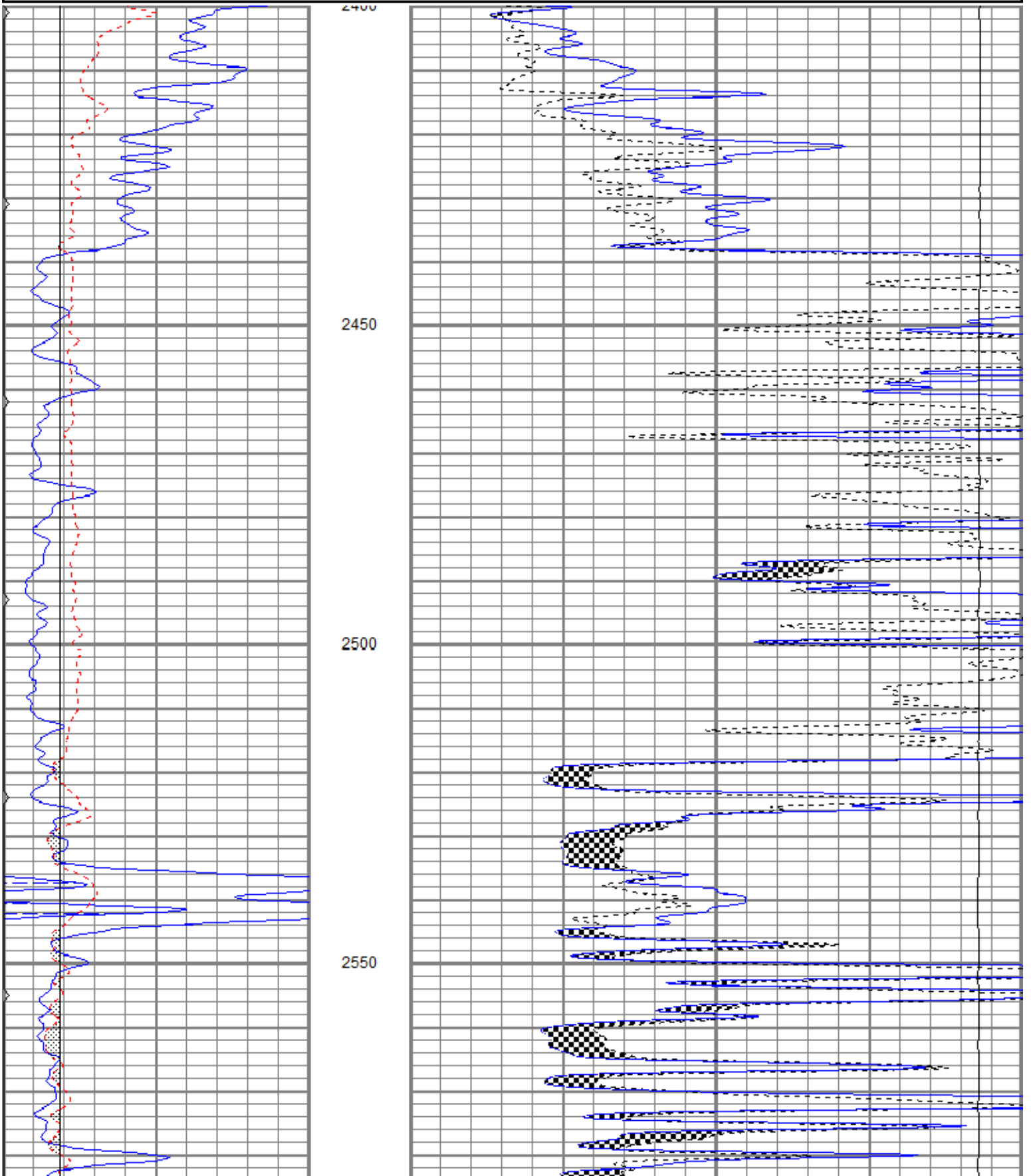


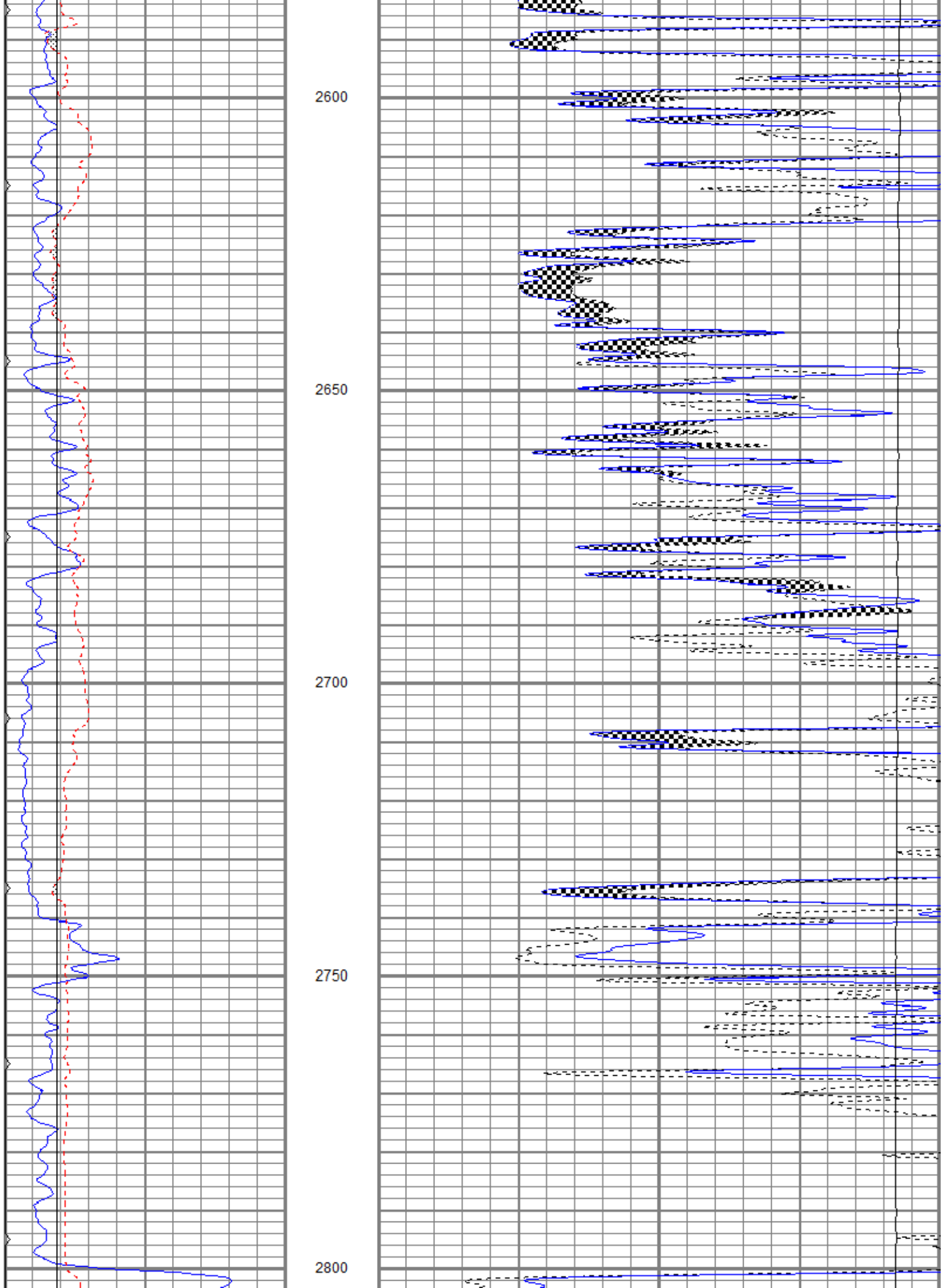
MAIN PASS

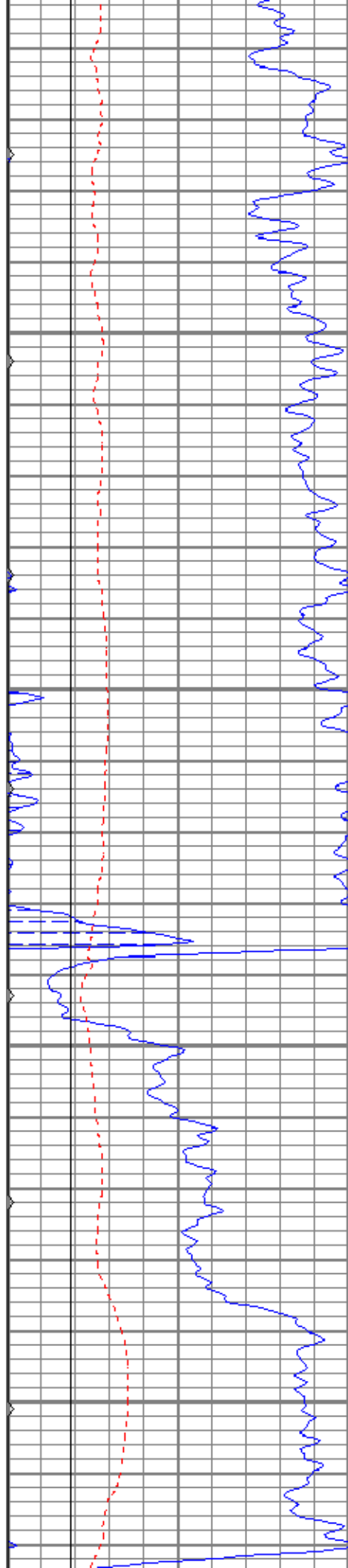
Database File jofnielsen1oh.db
 Dataset Pathname pass6
 Presentation Format kml
 Dataset Creation Wed May 09 23:30:55 2018
 Charted by Depth in Feet scaled 1:240

0	GR (GAPI)	150
6	MCAL (in)	16
6	BOREID (in)	16
0	MINMK	50

0	MN 2" (Ohm-m)	20
0	MI 1" (Ohm-m)	20
10000	LTEN (lb)	0





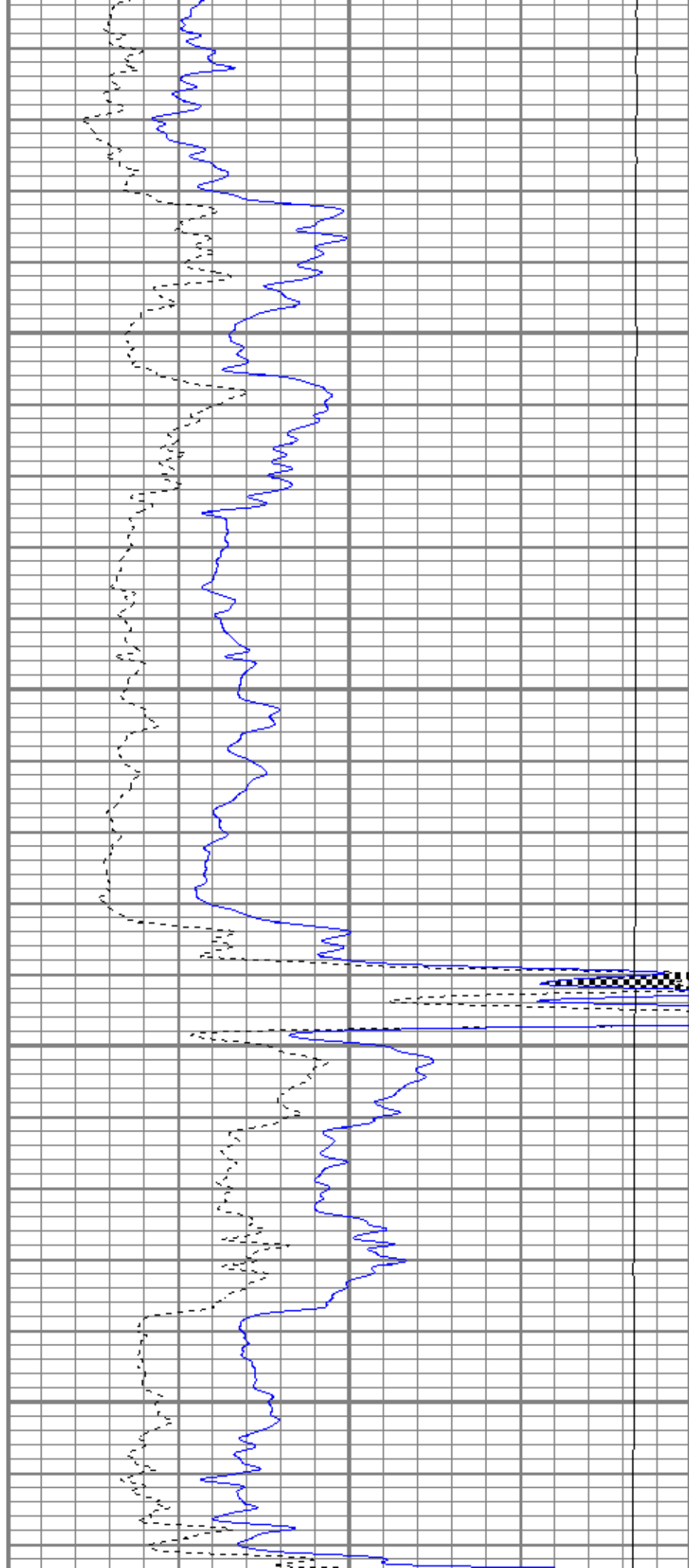


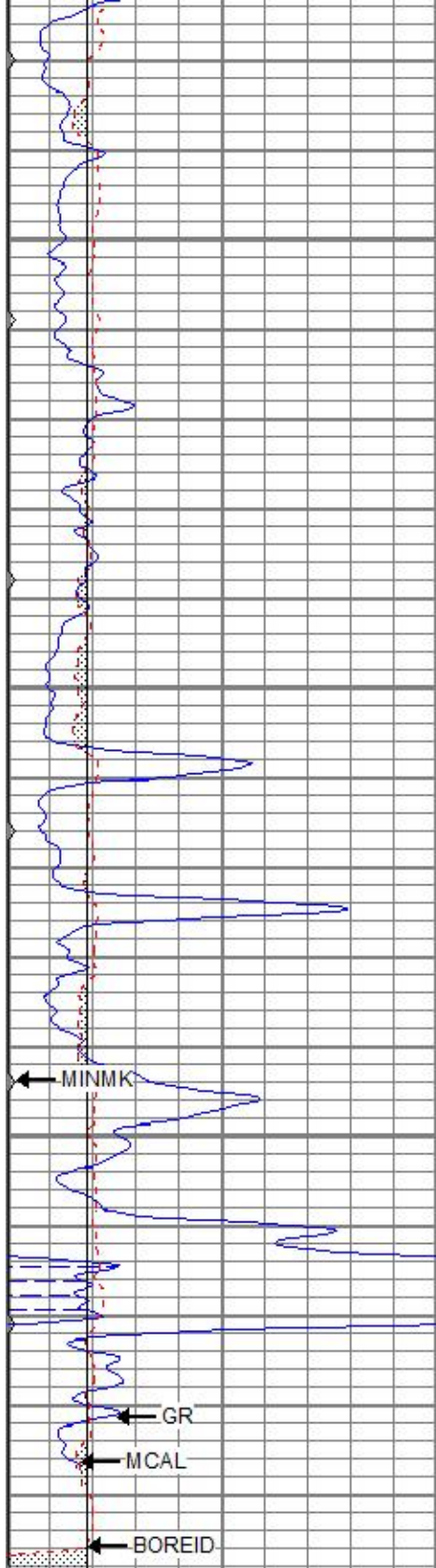
2850

2900

2950

3000



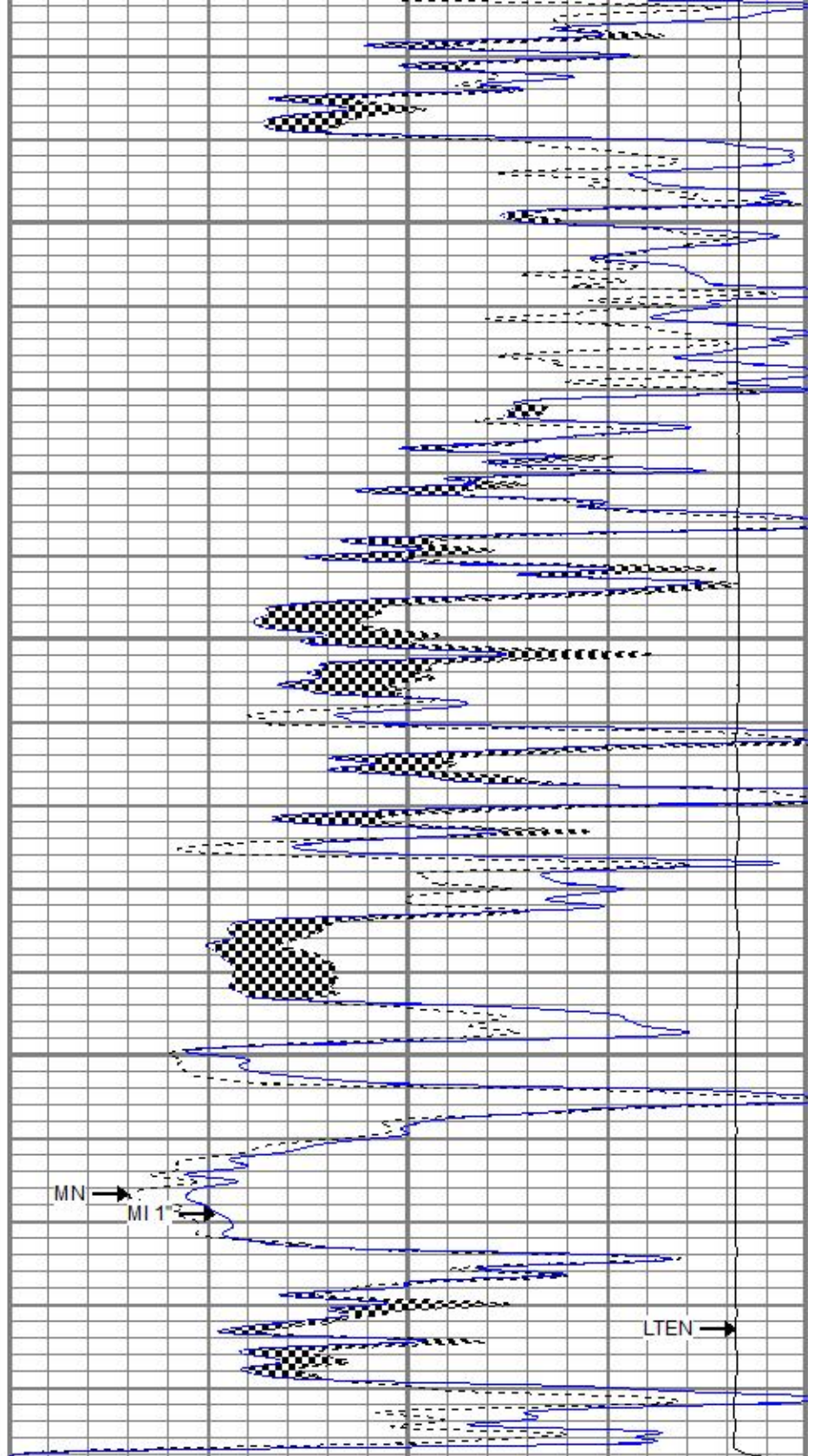


3050

3100

3150

0	GR (GAPI)	150
6	MCAL (in)	16
6	BOREID (in)	16
0	MINMK	50



0	MN 2" (Ohm-m)	20
0	MI 1" (Ohm-m)	20
10000	LTEN (lb)	0

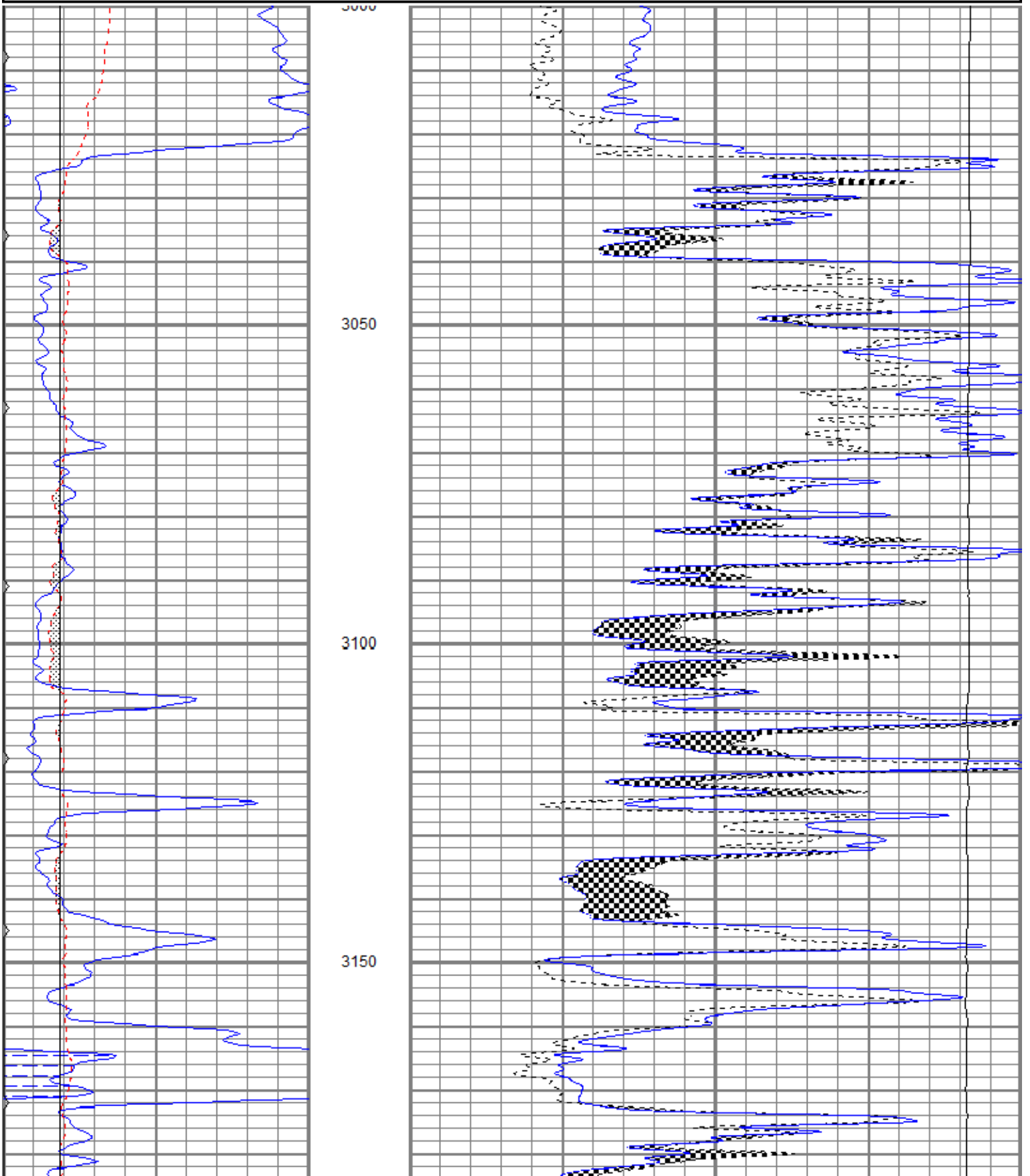


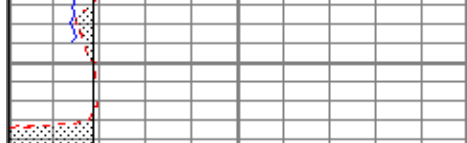
REPEAT SECTION

Database File jofnielsen1oh.db
 Dataset Pathname pass5
 Presentation Format kml
 Dataset Creation Wed May 09 23:17:30 2018
 Charted by Depth in Feet scaled 1:240

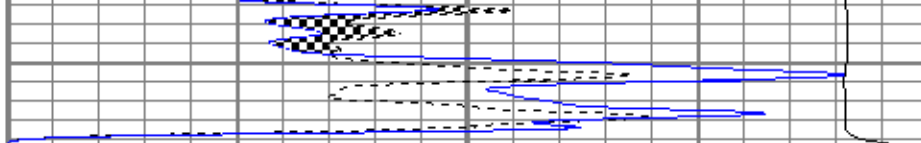
0	GR (GAPI)	150
6	MCAL (in)	16
6	BOREID (in)	16
0	MINMK	50

0	MN 2" (Ohm-m)	20
0	MI 1" (Ohm-m)	20
10000	LTEN (lb)	0





0	GR (GAPI)	150
6	MCAL (in)	16
6	BOREID (in)	16
0	MINMK	50



0	MN 2" (Ohm-m)	20
0	MI 1" (Ohm-m)	20
10000	LTEN (lb)	0

Database File		jofnielsen1oh.db		Calibration Report	
Dataset Pathname		pass6			
Dataset Creation		Wed May 09 23:30:55 2018			

Microlog Calibration Report

Serial-Model:	1600-Pengo
Performed:	Wed May 09 23:15:41 2018

	Readings			References			Results	
	Zero	Cal		Zero	Cal		m	b
Normal	-0.0003	0.5884	V	0.0000	10.0000	Ohm-m	16.9856	0.0049
Inverse	0.0020	0.7647	V	0.0000	9.5000	Ohm-m	12.4545	-0.0245
Caliper	1.3663	2.2079	V	6.7500	14.5000	in	9.2080	-5.8306

Gamma Ray Calibration Report

Serial Number:	2000	
Tool Model:	P2000	
Performed:	Sun May 06 10:04:13 2018	
Calibrator Value:	1.0	GAPI
Background Reading:	0.0	cps
Calibrator Reading:	1.0	cps
Sensitivity:	0.7000	GAPI/cps

Sensor	Offset (ft)	Schematic	Description	Length (ft)	O.D. (in)	Weight (lb)
GR	8.38		CHD-None	0.75	1.50	5.00
MCAL	1.30		GR-P2000 (2000)	3.67	3.25	40.00
MI	1.30		ML-Pengo (1600)	6.97	3.50	100.00
MN	1.30					

Dataset:	jofnielsen1oh.db: field/well/run1/pass6
Total length:	11.38 ft
Total weight:	145.00 lb
O.D.:	3.50 in