



FILE NO: _____ COMPANY **MERIT ENERGY COMPANY**
 WELL **CARRIE 15-1**
 FIELD **WILDCAT**
 COUNTY **FINNEY** STATE **KANSAS**
 API NO: 15-093-21978-00-00

Ver. 4.15 LOCATION: 1632 FEL & 2315 FNL
 SEC 15 TWP 23S RGE 35W
 OTHER SERVICES: DAL/GR, HDIL/GR, ZDLCN/GR, ZDLCN/HDIL/GR, ML/GR

PERMANENT DATUM GL ELEVATION 3020.6 FT
 LOG MEASURED FROM KB 12 FT ABOVE P.D.
 DRILL. MEAS. FROM KB
 ELEVATIONS: KB 3033 FT, DF 3032 FT, GL 3021 FT

DATE	05-Mar-2020	RUN	1	TRIP	1
SERVICE ORDER	US166109	DEPTH DRILLER	5000 FT	DEPTH LOGGER	5001 FT
BOTTOM LOGGED INTERVAL	5001 FT	TOP LOGGED INTERVAL	1828 FT	CASING DRILLER	8.625 IN @ 1832 FT
CASING LOGGER	1828 FT	BIT SIZE	7.875 IN	TYPE OF FLUID IN HOLE	OBM
DENSITY	9.35 LB/G	VISCOSITY	52 CP	PH	11
FLUID LOSS	6.4 C3	SOURCE OF SAMPLE	PIT	RM AT MEAS. TEMP.	3.038 OHMM @ 75 DEGF
RM AT MEAS. TEMP.	2.278 OHMM @ 75 DEGF	RM AT MEAS. TEMP.	3.797 OHMM @ 75 DEGF	SOURCE OF RMF	RMC
RM AT MEAS. TEMP.	2.024 OHMM @ 116 DEGF	RM AT BHT	5 HRS	TIME SINCE CIRCULATION	116 DEGF
MAX. RECORDED TEMP.	HL-6670	LOCATION	OKC, OK	EQUIP. NO.	S. Yassa
RECORDED BY	MR. M. Lange	WITNESSED BY			

IN MAKING INTERPRETATIONS OF LOGS OUR EMPLOYEES WILL GIVE THE CUSTOMER THE BENEFIT OF THEIR BEST JUDGEMENT. BUT SINCE ALL INTERPRETATIONS ARE OPINIONS BASED ON INFERENCES FROM ELECTRICAL OR OTHER MEASUREMENTS, WE CANNOT, AND WE DO NOT GUARANTEE THE ACCURACY OR CORRECTNESS OF ANY INTERPRETATION. WE SHALL NOT BE LIABLE OR RESPONSIBLE FOR ANY LOSS, COST, DAMAGES, OR EXPENSES WHATSOEVER INCURRED OR SUSTAINED BY THE CUSTOMER RESULTING FROM ANY INTERPRETATION MADE BY ANY OF OUR EMPLOYEES.

REMARKS

RUN 1 TRIP 1: 1 OPERATION IN WELL
 HDIL/DAL/ML/ZDL/CN/GR RUN IN COMBINATION

CVOL CALCULATED FOR PROPOSED 5.5" CASING
 CALIPER VERIFIED IN CASING

ZDL & CN RUN ON LIMESTONE MATRIX
 RHO MATRIX: 2.68 G/CC

HDIL RUN WITH 0.5" STANDOFFS
 ABC TO CALCULATED: MUD CONDUCTIVITY

ACOUSTIC POROSITY RUN ON LIMESTONE MATRIX

WELLBORE RUGOSITY WILL AFFECT THE ACCURACY OF MEASUREMENTS

CREW: D.HUTCHISON, K.REED
 RIG: DUKE RIG 9

EQUIPMENT DATA

RUN	TRIP	TOOL	SERIES NO.	SERIAL NO.	POSITION
1	1	TTRM	3981 XA	10045153	FREE
1	1	COMREM	3514 XC	12367091	FREE
1	1	DGR	1329 XA	179184	FREE
1	1	CN	2446 XA	10162846	DECENTRALIZED
1	1	ZDL	2234 XA	10495112	PAD DEVICE
1	1	DKJT	3939 XA	186262	FREE
1	1	DAL	1677EA/1680MA	10192401/151555	CENTRALIZED
1	1	CENT	4341XA	177195	CENTRALIZED
1	1	HDIL	1515 EA/MA	10059243/179553	1.5" STANDOFFS
1	1	ML	1243XA	10676690	PAD DEVICE

MAIN LOG 5"/100FT SCALE

ECLIPS 7.0i ECLIPS General Release Rel 7.0i Thu Jun 08 20:36:10 CDT 2017

Updates: 1,32 Patches: 7

Plotted: Fri Mar 6 01:06:03 2020

PARAMETER AND FILTER SUMMARY REPORT

FILE: /dat1a/MERIT_CARRIE_15_1/GSALM_DAL02.prm
 LOGGING MODE: DEPTH DIRECTION: UP
 TOP DEPTH: 1723.250 ft BOTTOM DEPTH: 5007.500 ft

SYMMETRIC FILTER

MEASUREMENT TYPE	PARAMETER	VALUE	UNITS	INTERVAL (ft)	
TENSION	FILTER ()	medium (1)		TOP	BOTTOM
GR	FILTER ()	medium (1)		"	"
	FILTER (.i)	medium (1)		"	"
SL	FILTER	medium (1)		"	"
CALIPER	FILTER ()	medium (1)		"	"
DT24	FILTER ()	medium (1)		"	"
	FILTER (.i)	medium (1)		"	"

BOREHOLE & CEMENT

MEASUREMENT TYPE	PARAMETER	VALUE	UNITS	INTERVAL (ft)	
X-Y COMBINED CALIPER PROCESSING	X-Y Caliper	X-Axis		TOP	BOTTOM
BIT SIZE	BIT SIZE	7.875	in	"	"
MUD DENSITY	MUD DENSITY	9.35	lbm/gal	"	"
BOREHOLE CORR DIAMETER SOURCE	CALIPER/FIXED DIA. (sibh*)	USE CALIPER		"	"
BOREHOLE CORR DIAMETER	FIXED DIAMETER (sibh*)	7.875	in	"	"

SL PROCESSING

MEASUREMENT TYPE	PARAMETER	VALUE	UNITS	INTERVAL (ft)	
SL BOREHOLE	OPEN/CASED HOLE	OPEN HOLE		TOP	BOTTOM
	K COMPOUND WEIGHT %	0.00	pct	"	"
	K MUD COMPOUND TYPE	KCL		"	"
SL AUTOGAIN	AUTO GAIN (1329XA 1)	ON		"	"
SL SPECTRUM CALIBRATION	MODE	AUTOMATIC		"	"

ACOUSTIC POROSITY

MEASUREMENT TYPE	PARAMETER	VALUE	UNITS	INTERVAL (ft)	
ACOUSTIC POROSITY	POROSITY TYPE	WYLLIE		TOP	BOTTOM
	DTmatrix	47.60	us/ft	"	"
	DTfluid	190.00	us/ft	"	"
	DTshale	100.00	us/ft	"	"

	MOD. WYLLIE PARM	2.25	"	"
	MOD. R-H-G PARM	2.00	"	"
DELTA T CURVE SELECTION	DT24 SOURCE	FIRST ARRIVAL DT24	"	"

ACOUSTIC PICK CONTROL

MEASUREMENT TYPE	PARAMETER	VALUE	UNITS	INTERVAL (ft)	
DELTA-T REJECTION RANGE	REJECTION DTmin	40	us/ft	TOP	BOTTOM
	REJECTION DTmax	180	us/ft	"	"
FIRST ARRIVAL PICK (3 FT)	SEARCH START OFFSET (sfan1*)	358	us	"	"
	SEARCH START OFFSET (sfan2*)	358	us	"	"
	SEARCH START OFFSET (sfan3*)	358	us	"	"
	SEARCH START OFFSET (sfan4*)	358	us	"	"
	SEARCH WINDOW LENGTH	1200	us	"	"
	THRESHOLD FACTOR	0.30		"	"
	THRESHOLD MINIMUM (sfan1*)	1.8	pct	"	"
	THRESHOLD MINIMUM (sfan2*)	1.8	pct	"	"
	THRESHOLD MINIMUM (sfan3*)	1.8	pct	"	"
	THRESHOLD MINIMUM (sfan4*)	1.8	pct	"	"
FIRST ARRIVAL PICK (5 FT)	E3 THRESHOLD	OFF		"	"
	SEARCH START OFFSET (sfaf1*)	232	us	"	"
	SEARCH START OFFSET (sfaf2*)	232	us	"	"
	SEARCH START OFFSET (sfaf3*)	232	us	"	"
	SEARCH START OFFSET (sfaf4*)	232	us	"	"
	SEARCH WINDOW LENGTH	1200	us	"	"
	THRESHOLD FACTOR	0.30		"	"
	THRESHOLD MINIMUM (sfaf1*)	1.8	pct	"	"
	THRESHOLD MINIMUM (sfaf2*)	1.8	pct	"	"
	THRESHOLD MINIMUM (sfaf3*)	1.8	pct	"	"
THRESHOLD MINIMUM (sfaf4*)	1.8	pct	"	"	
E3 THRESHOLD	OFF		"	"	

ACOUSTIC QUALITY CONTROL

MEASUREMENT TYPE	PARAMETER	VALUE	UNITS	INTERVAL (ft)	
CYCLE SKIP LIMIT	CYCLE SKIP LIMIT	100	us	TOP	BOTTOM

ACOUSTIC WAVEFORM FILTER

MEASUREMENT TYPE	PARAMETER	VALUE	UNITS	INTERVAL (ft)	
WAVEFORM FILTER - DELTA T	SURFACE WAVE FILTER	ON		TOP	BOTTOM
	LOW FREQ CUTOFF	4000	Hz	"	"
	HIGH FREQ CUTOFF	30000	Hz	"	"

ACOUSTIC TCC CONTROL PARAMETERS

MEASUREMENT TYPE	PARAMETER	VALUE	UNITS	INTERVAL (ft)	
GENERAL TCC PARAMETERS	AGC	ON		TOP	BOTTOM
	SUBCYCLE LENGTH	50		"	"
	STACK LEVEL	1		"	"
	DSP FILTER	ON		"	"
DELTA T TCC PARAMETERS	SUBSET			"	"
	ACG WINDOW	512	us	"	"
	MOVEOUT	16	us/ft	"	"
	SAMPLE PERIOD	16		"	"
	RX DELAY	96	us	"	"

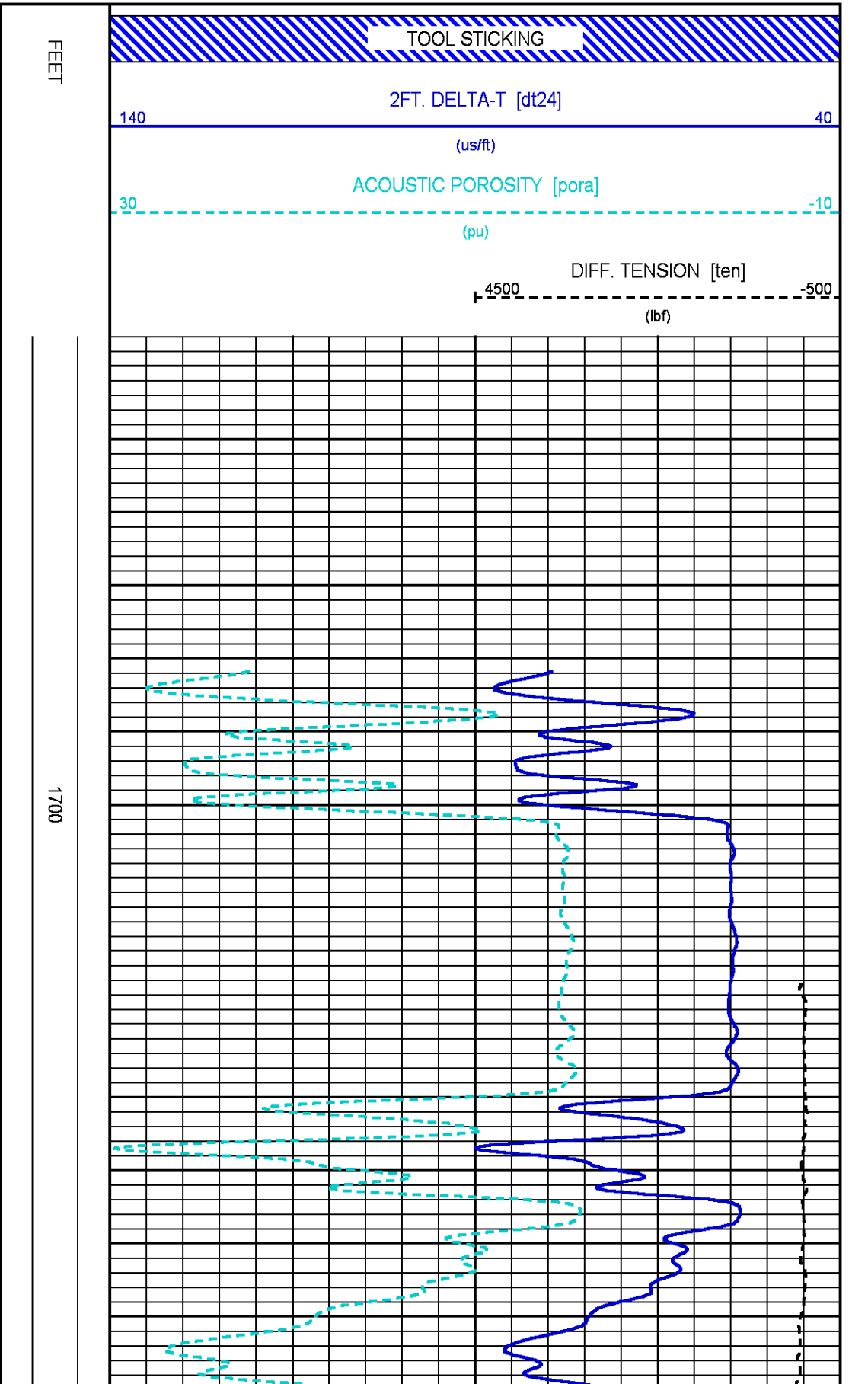
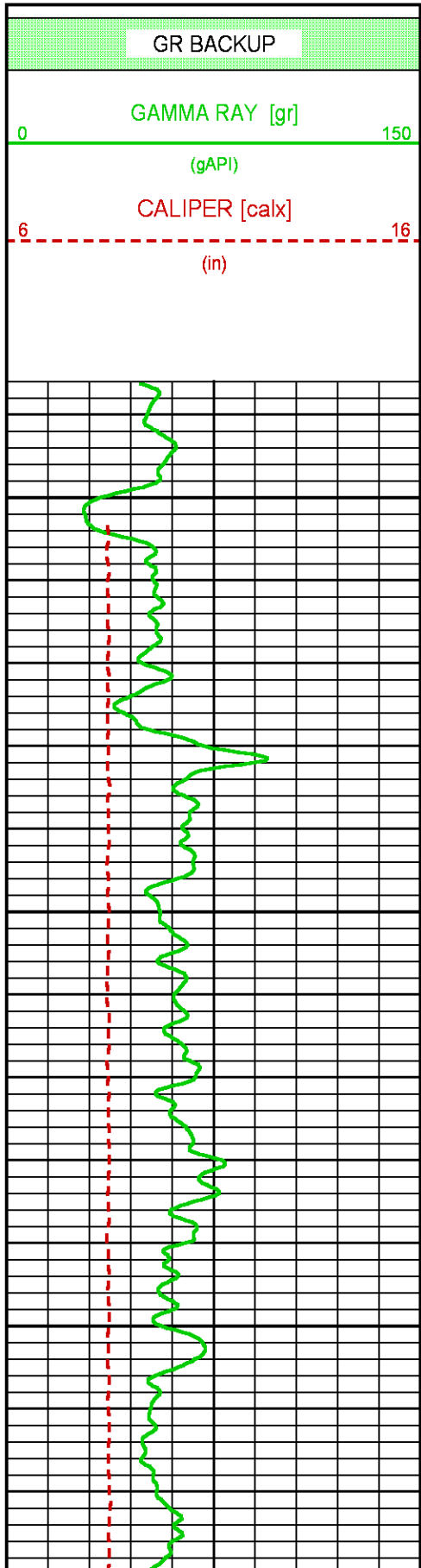
CURVE DESCRIPTION REPORT

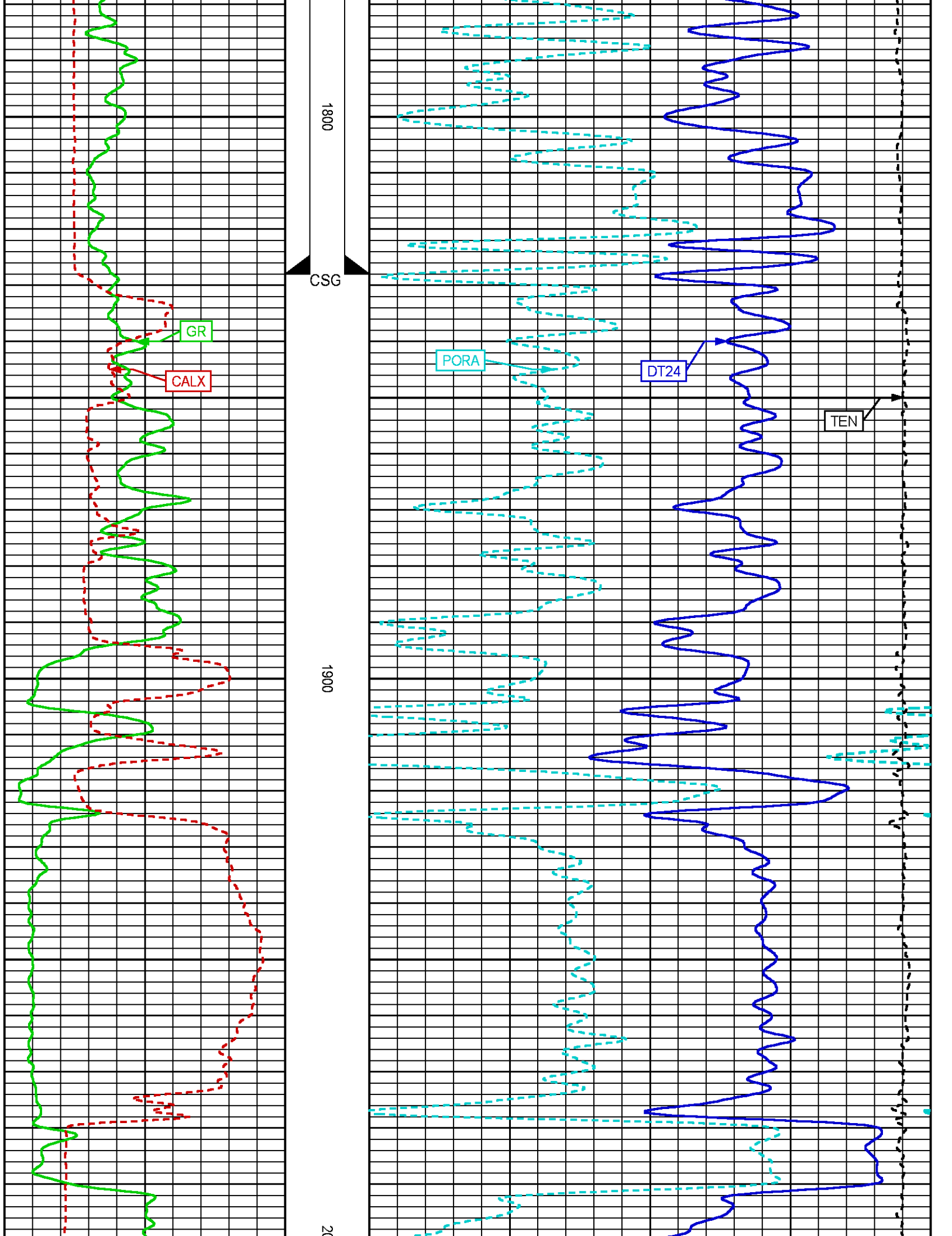
CURVE NAME	CREATION DATE	CURVE DESCRIPTION
F1:CALX	Mar 5 21:33:50 2020	CALIPER FROM X-AXIS OF XY CALIPER(S)
F1:DT24	Mar 5 21:33:50 2020	SLOWNESS OVER 24-INCH INTERVAL
F1:GR	Mar 5 21:33:50 2020	GAMMA RAY
F1:PORA	Mar 5 21:33:50 2020	ACOUSTIC POROSITY
F1:TEN	Mar 5 21:33:50 2020	DIFFERENTIAL TENSION

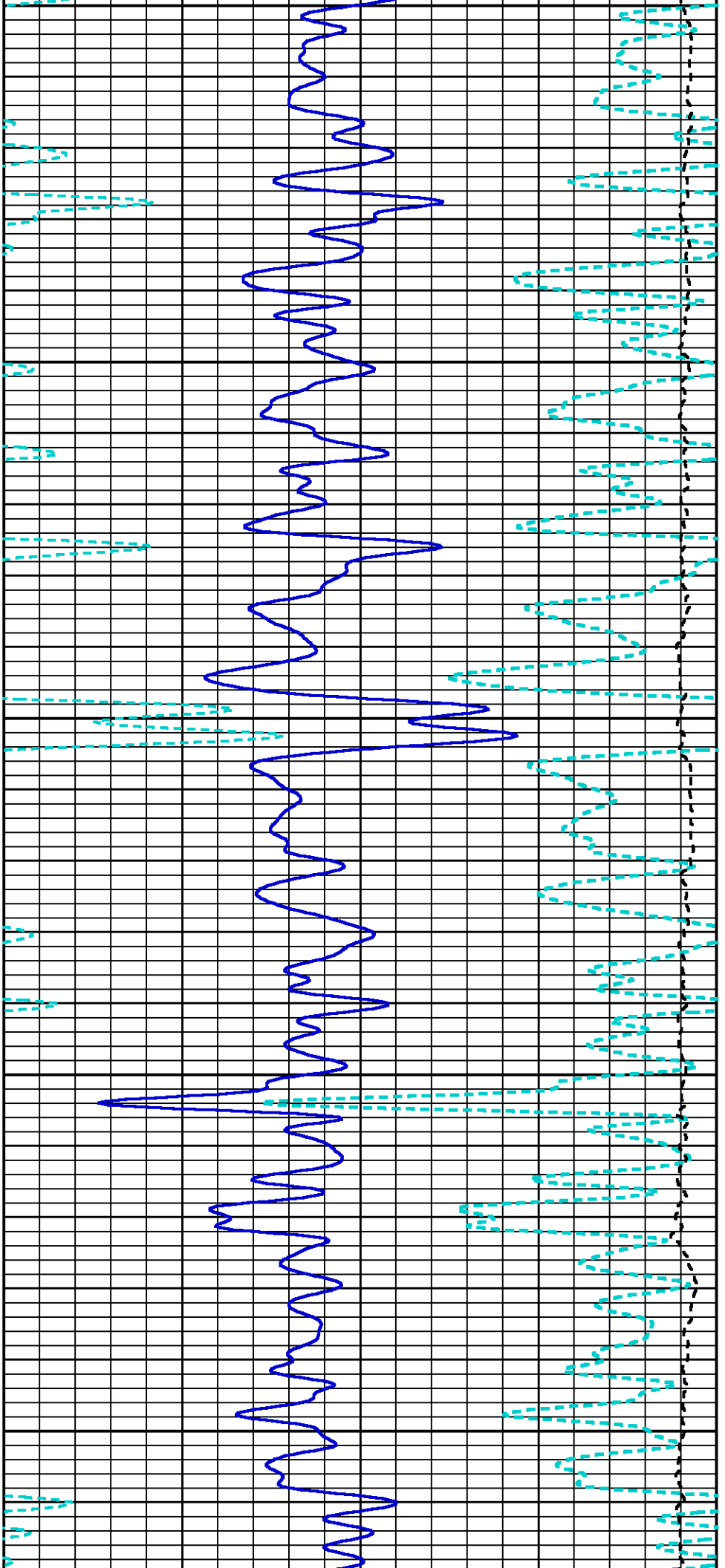
CURVE MEASURE POINT OFFSET

CURVE	OFFSET (ft)	CURVE	OFFSET (ft)	CURVE	OFFSET (ft)	CURVE	OFFSET (ft)
CALX	-71.00	GR	-88.12	TEN	0.00		
DT24	-44.75	PORA	-44.75				

Data File 1 : F1 : cpu6728:/dat1a/MERIT_CARRIE_15_1/MAIN.xtf
Created On : Mar 5 21:33:50 2020
Company : MERIT ENERGY COMPANY
Well : CARRIE 15-1
Field : WILDCAT
File Interval : 1621.75 - 5007.5 Feet
OCT : GSALM_DA



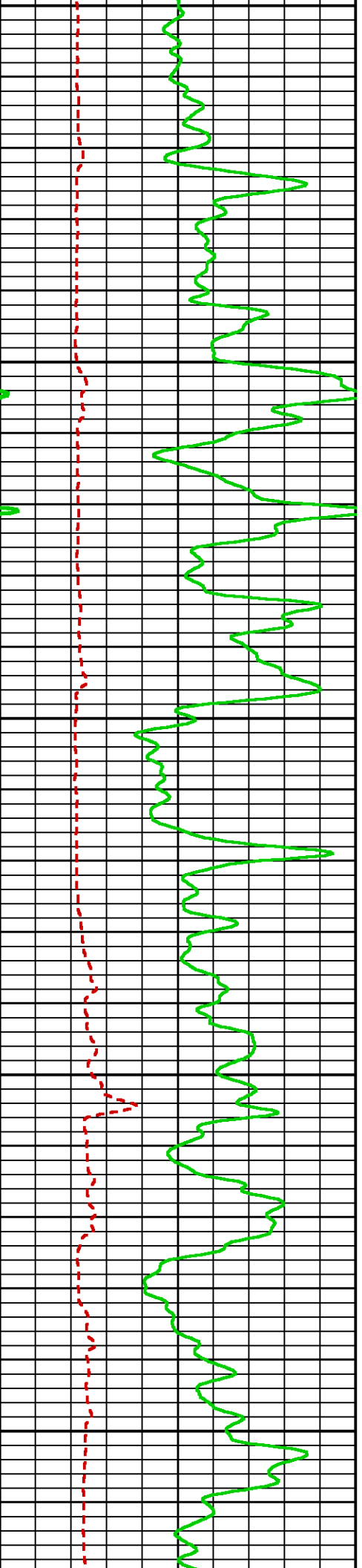


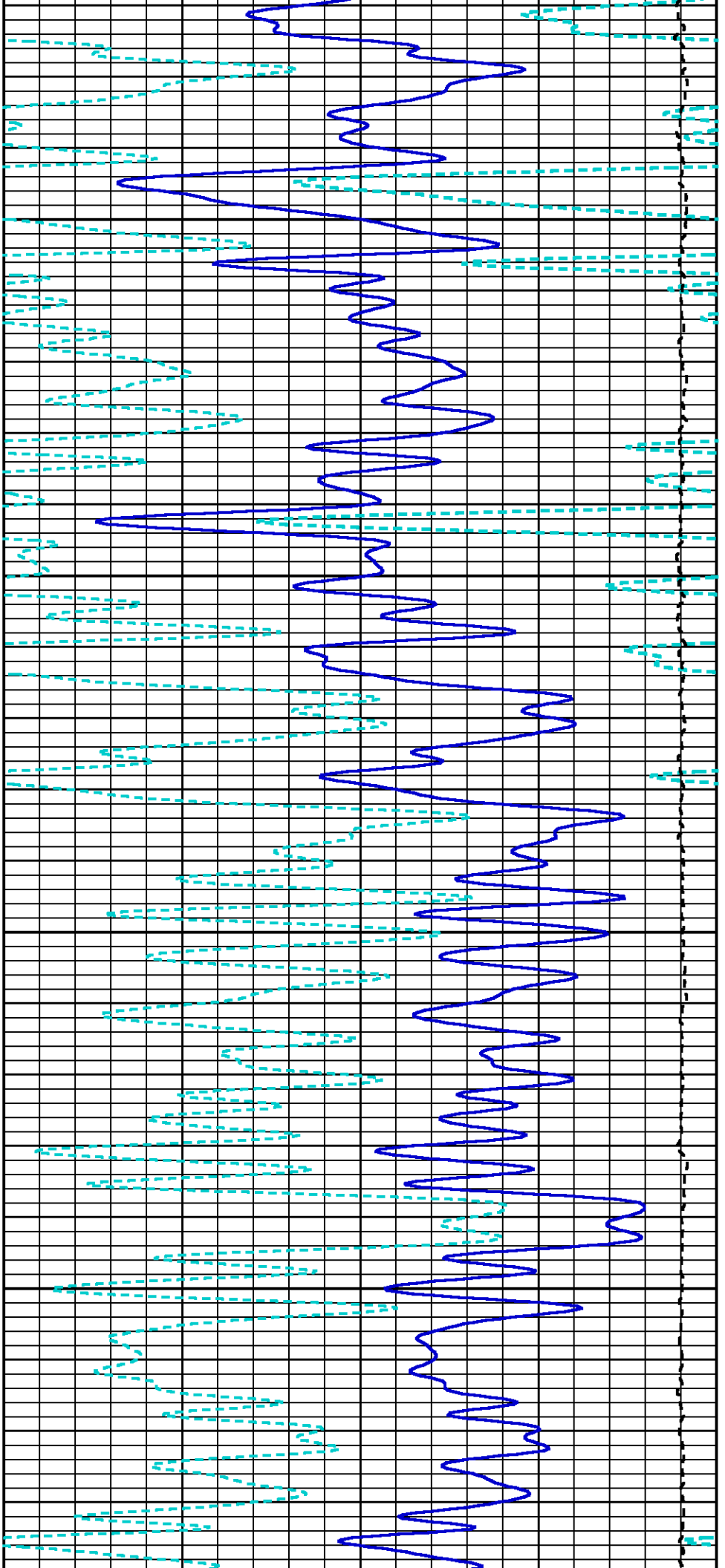


000

2100

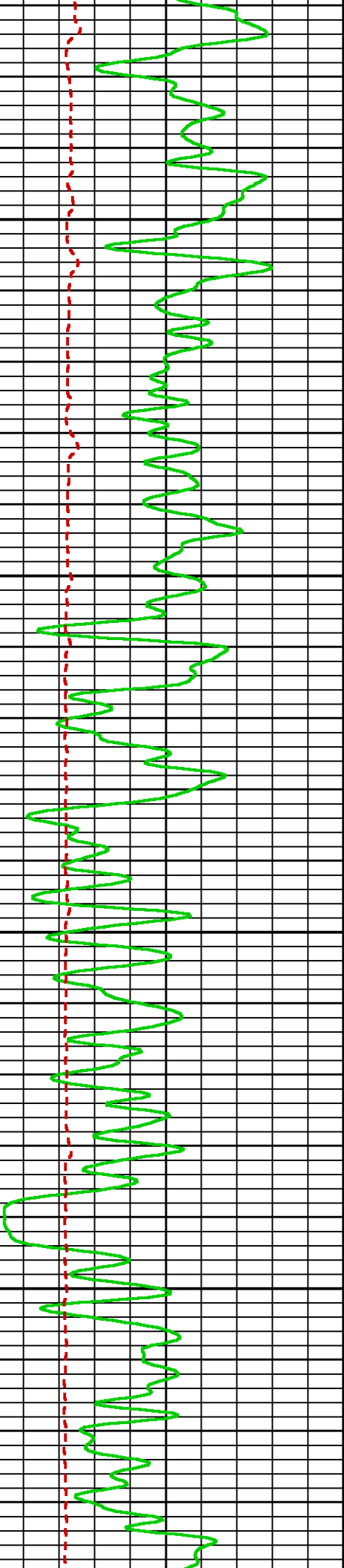
2200

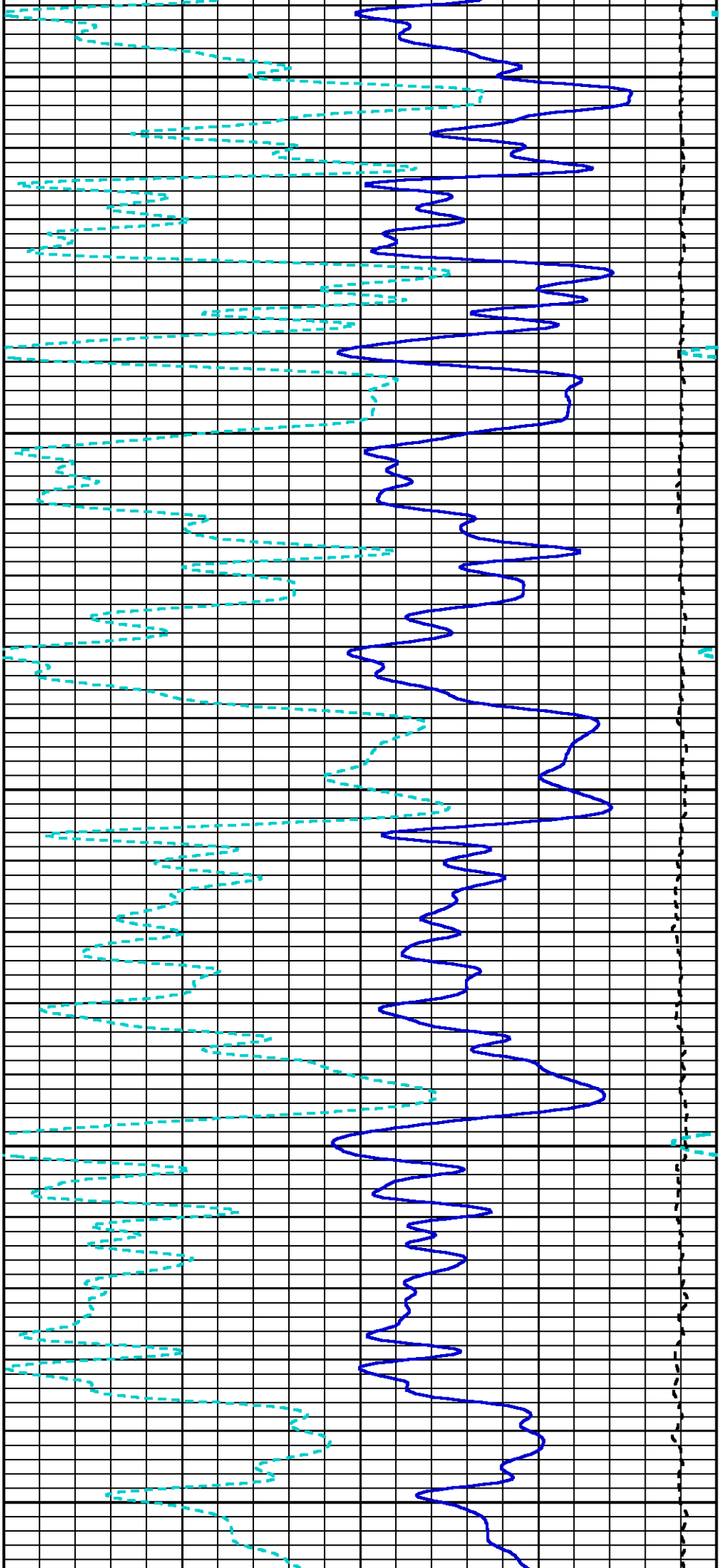




2300

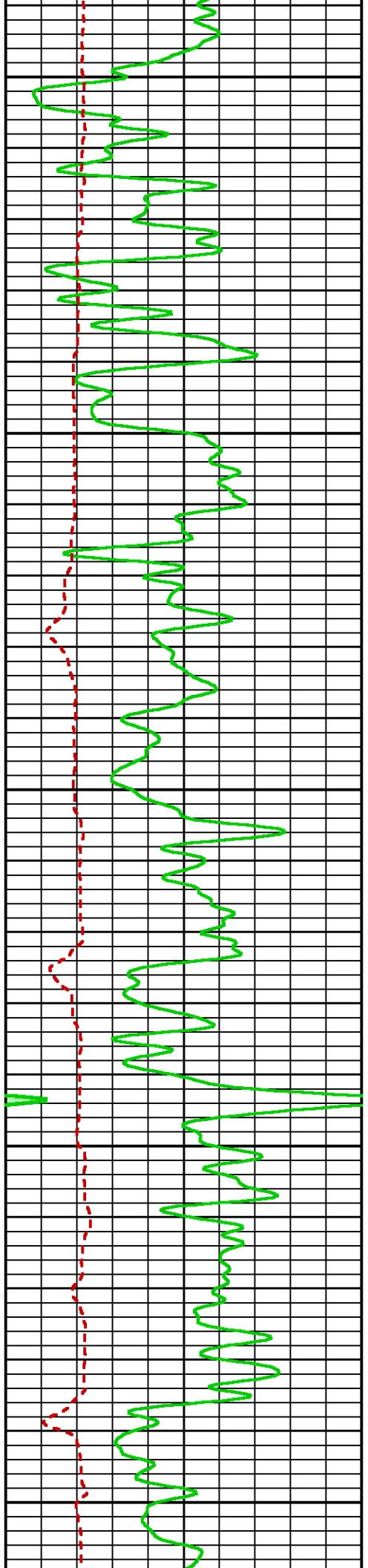
2400

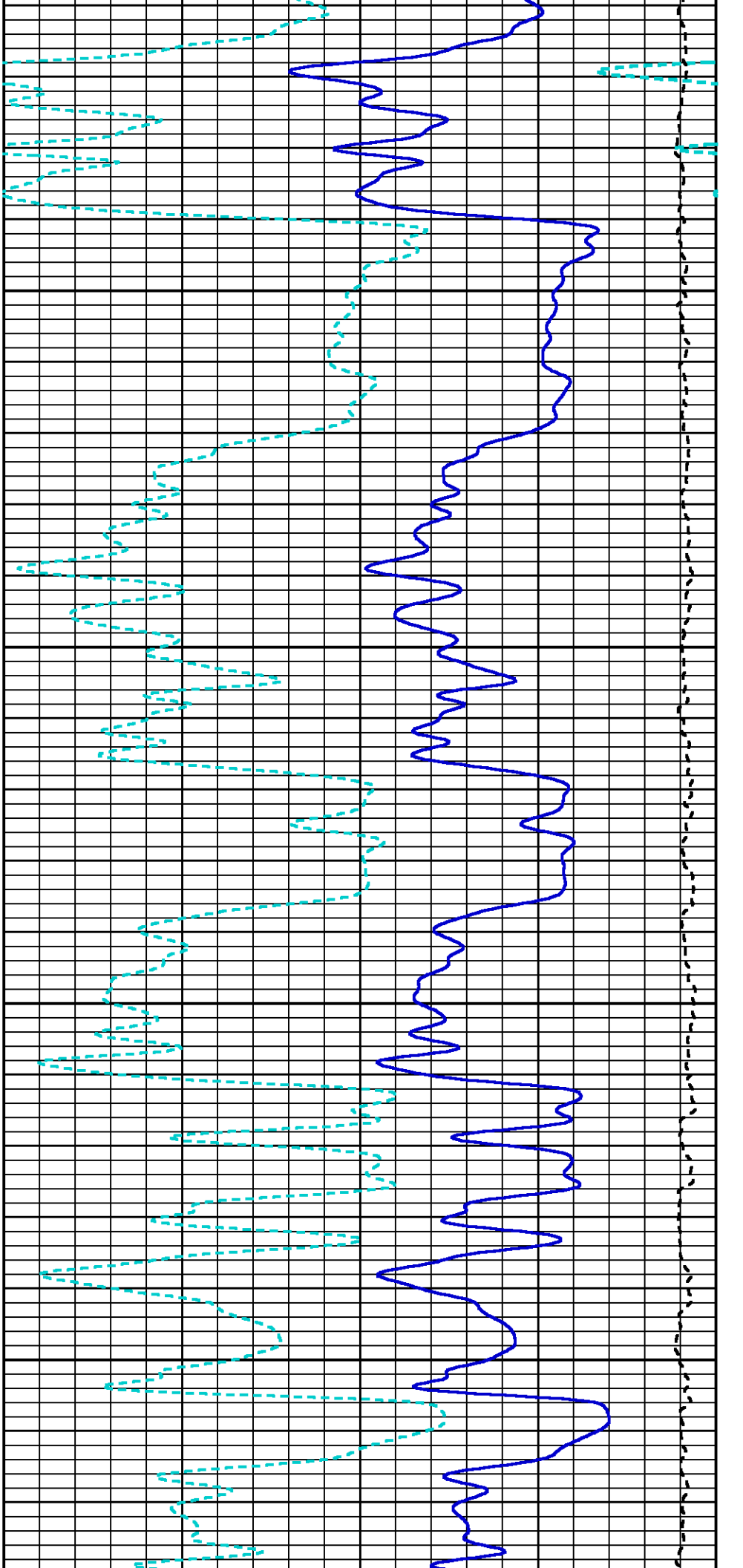




2500

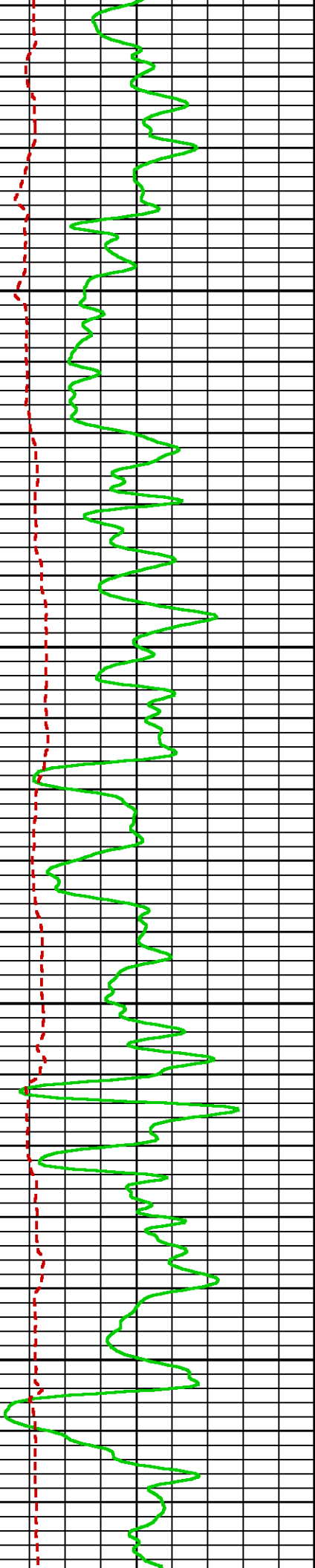
2600

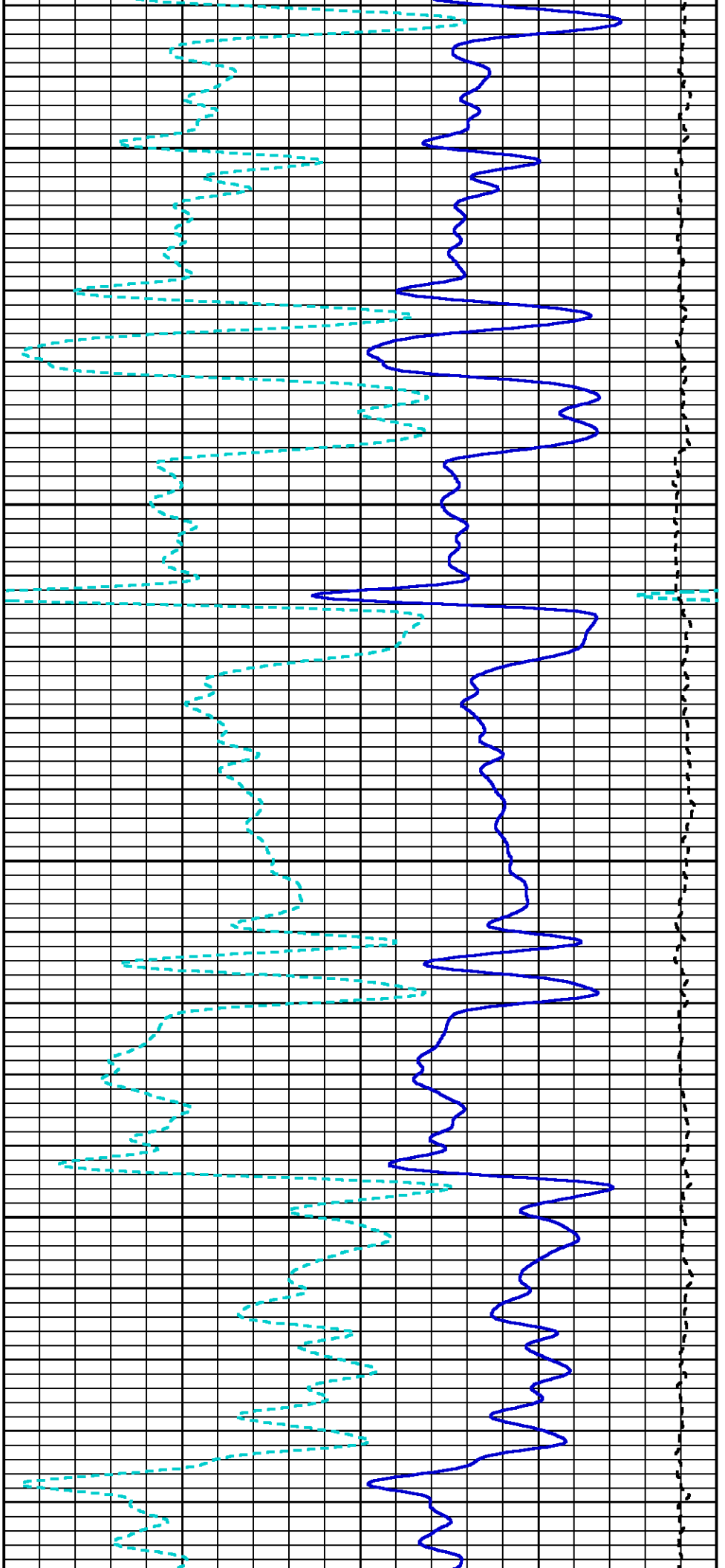




2700

2800

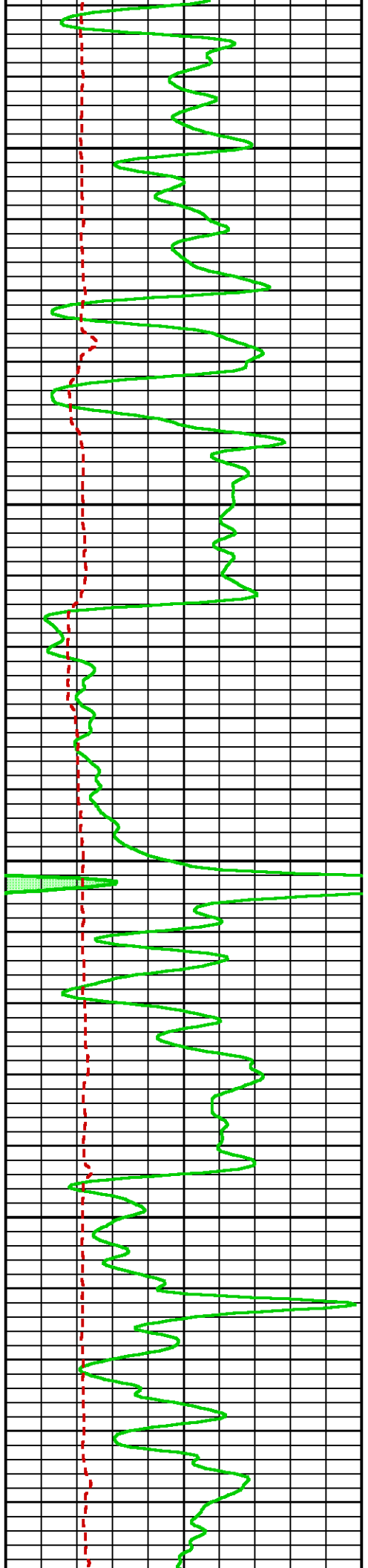


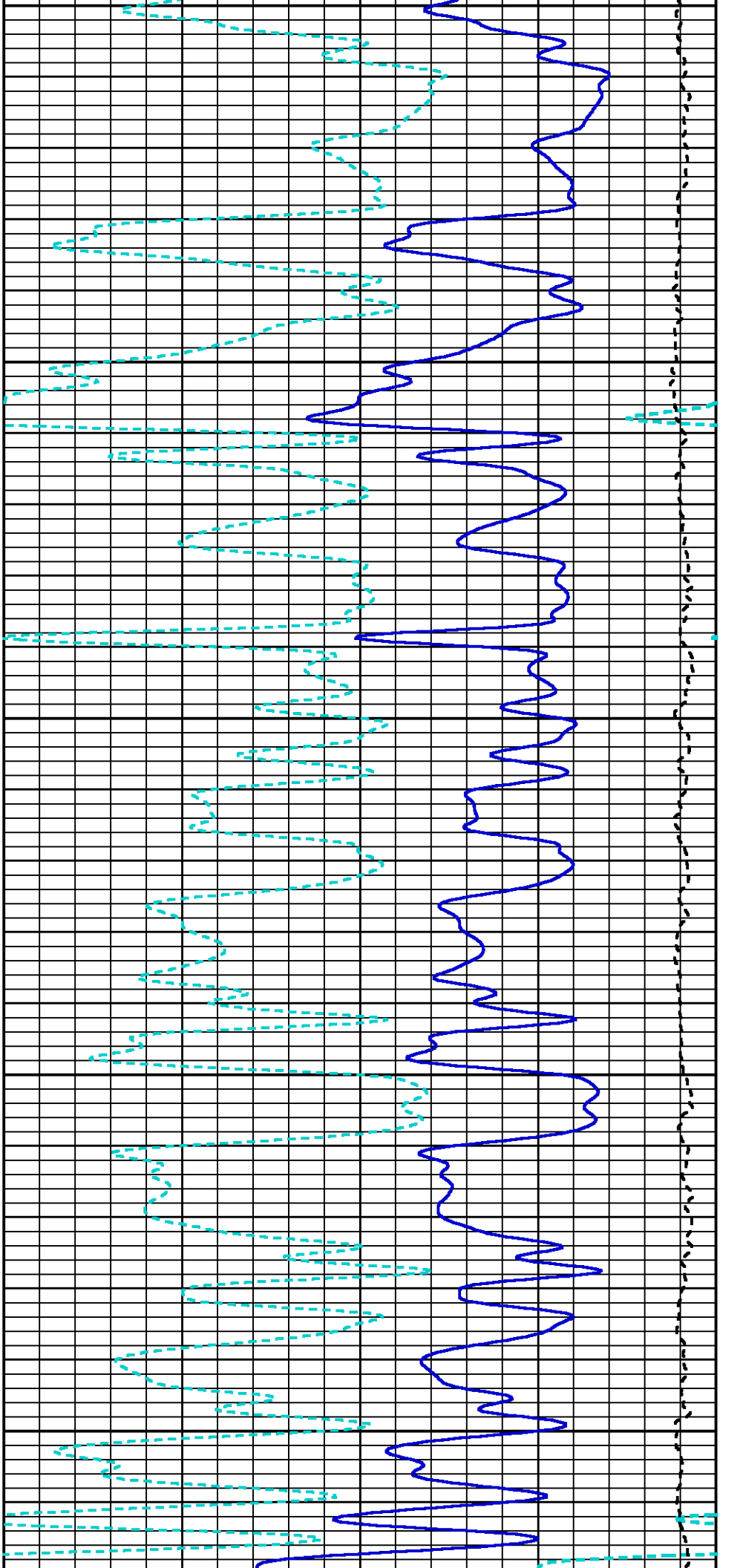


2900

3000

3

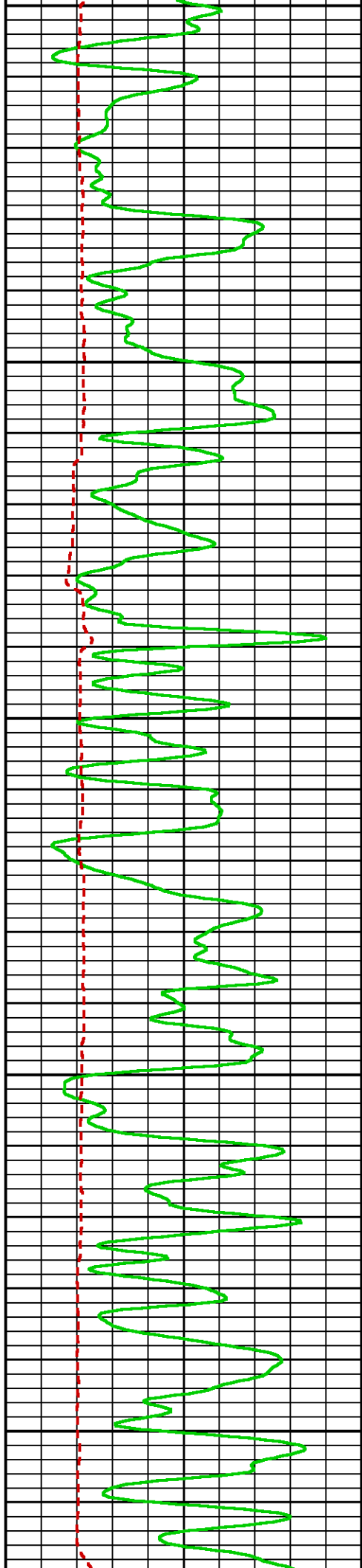


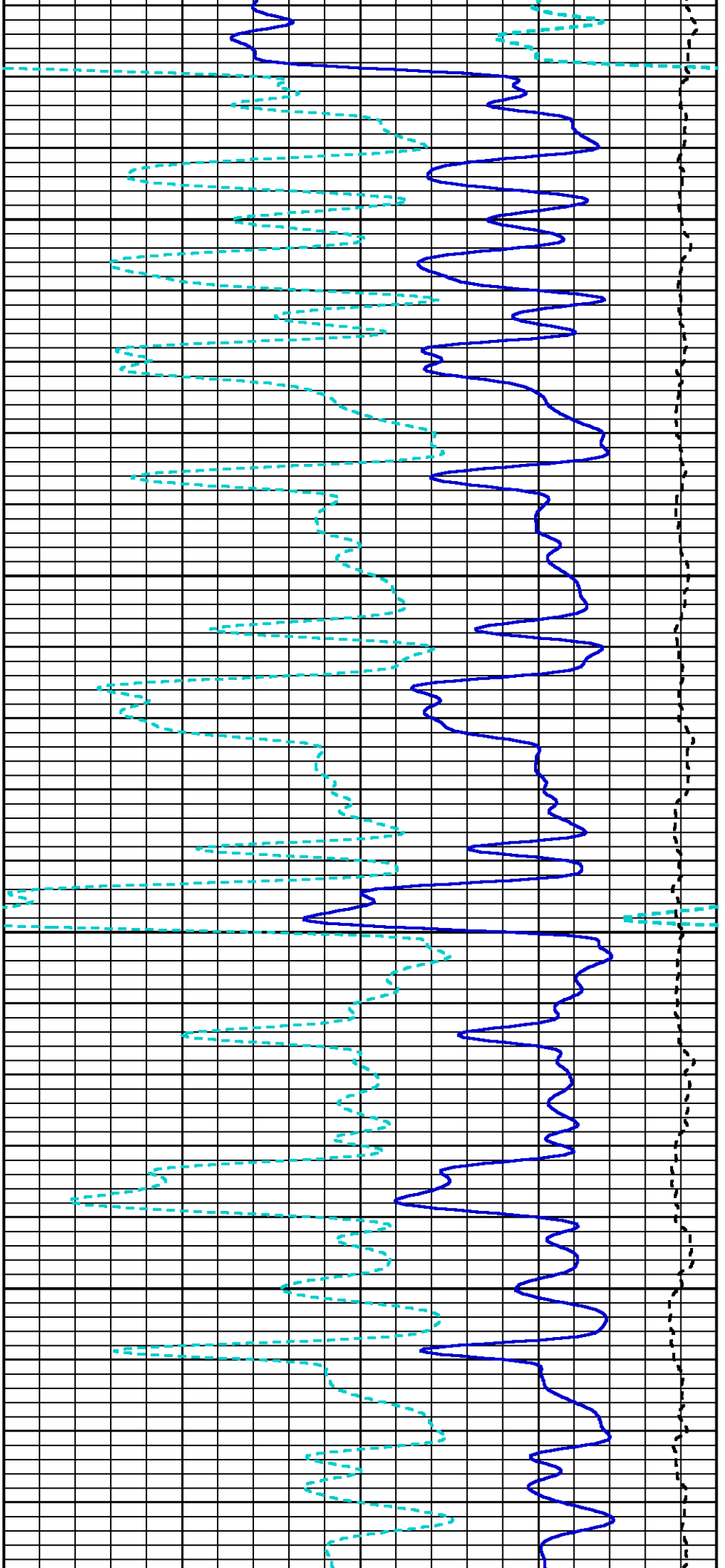


00

3200

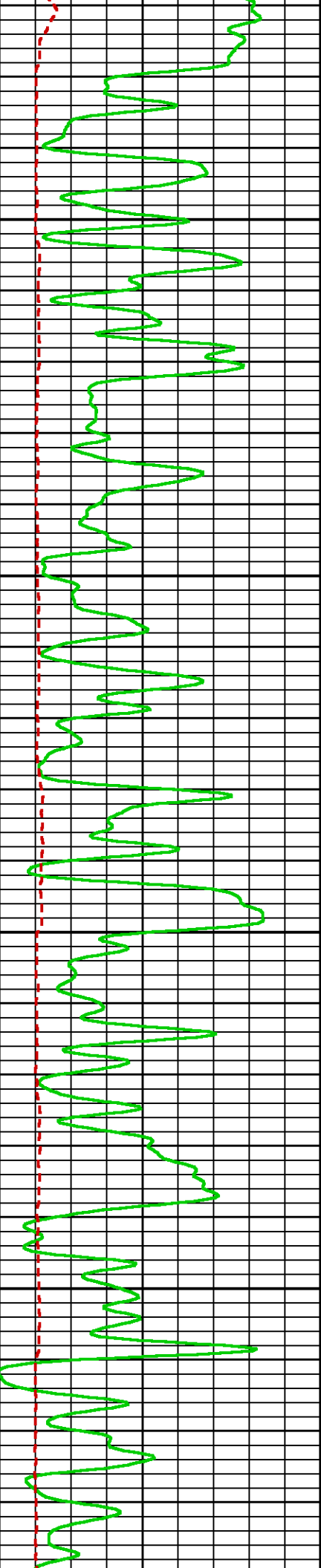
3300

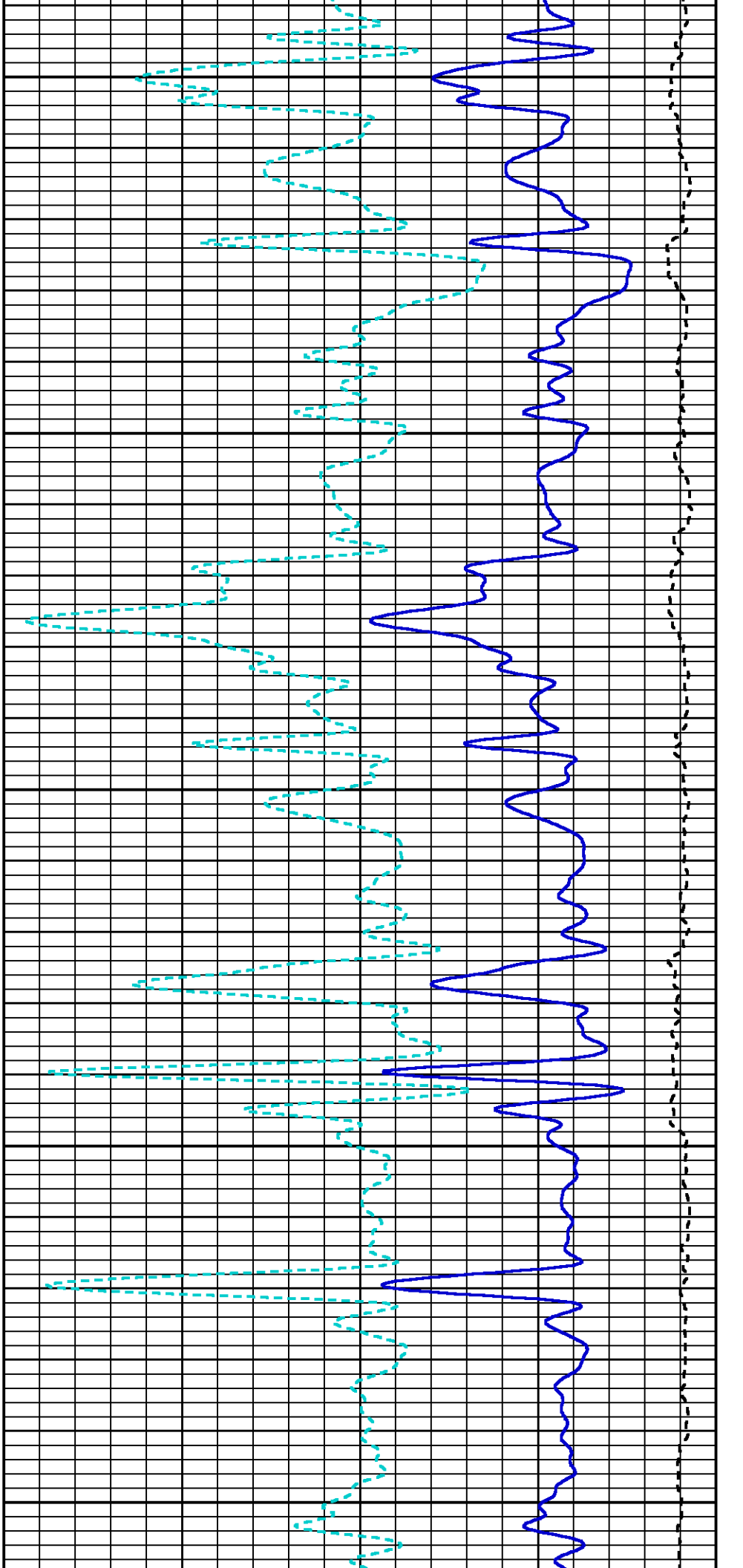




3400

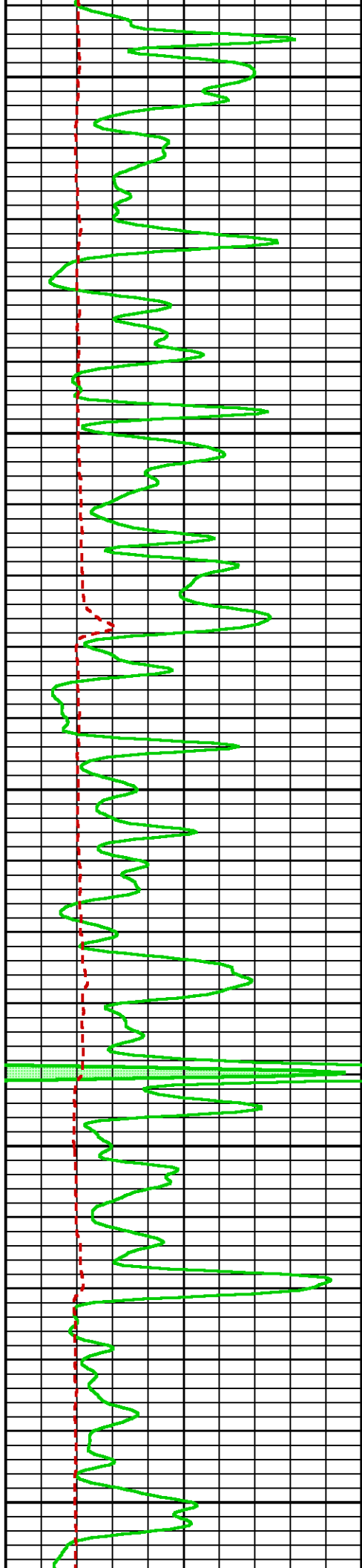
3500

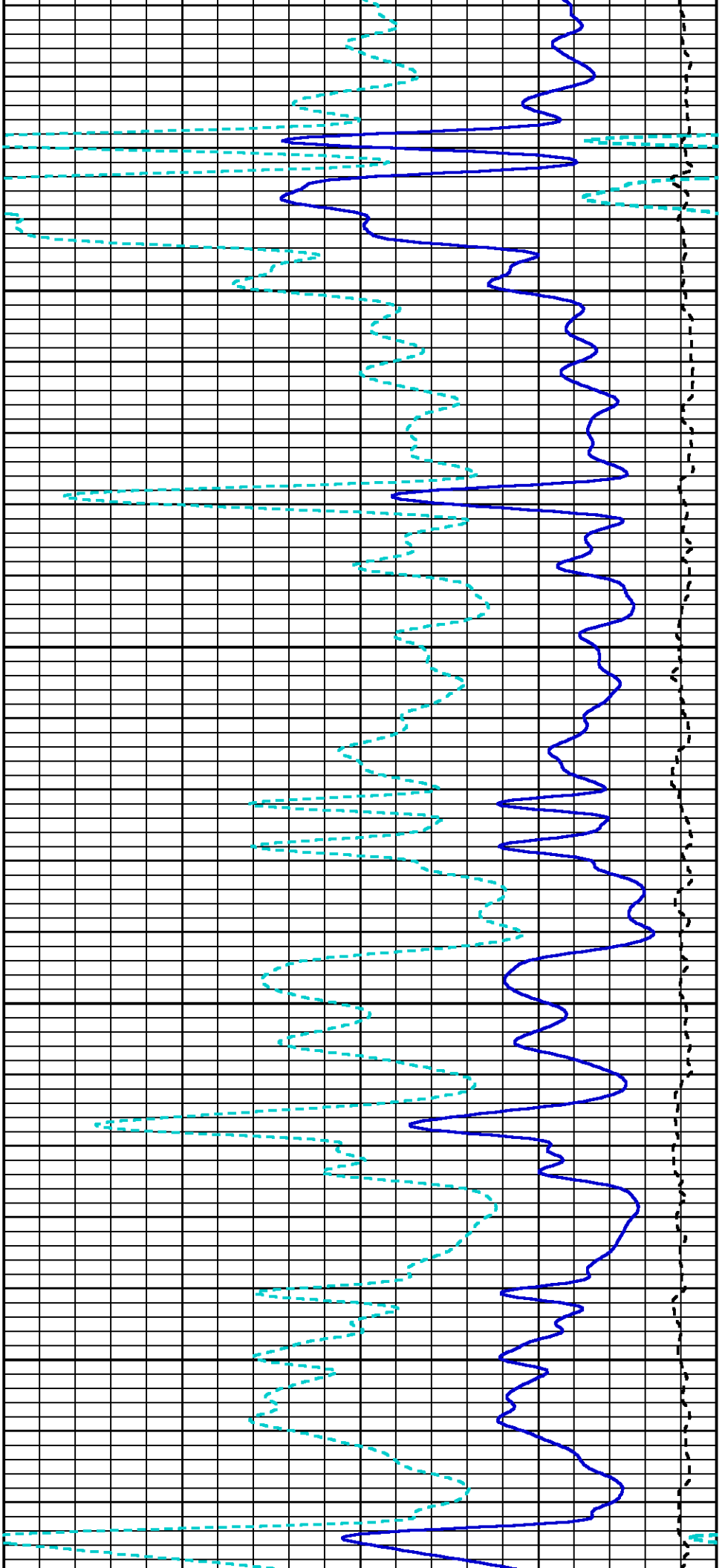




3600

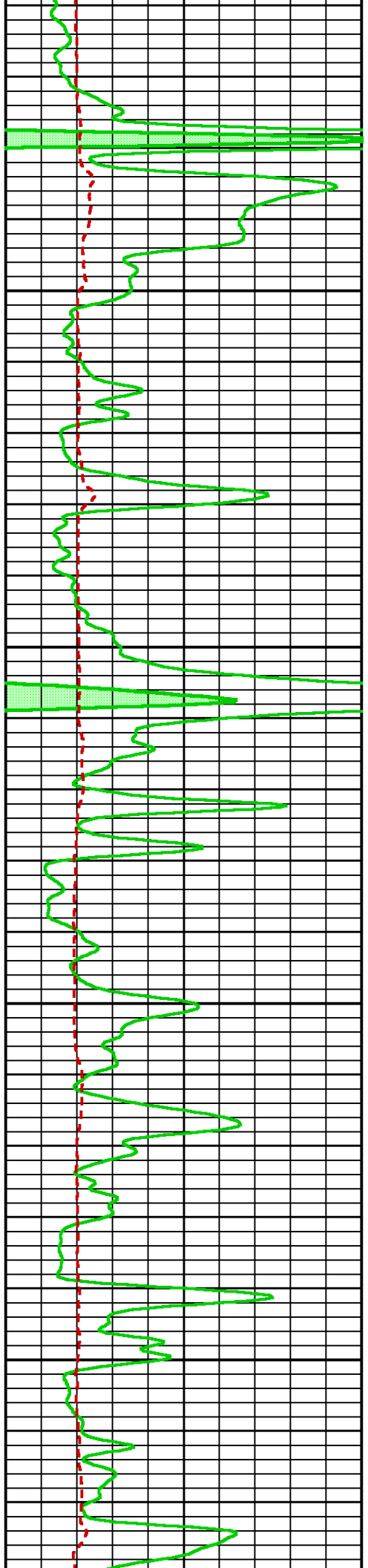
3700

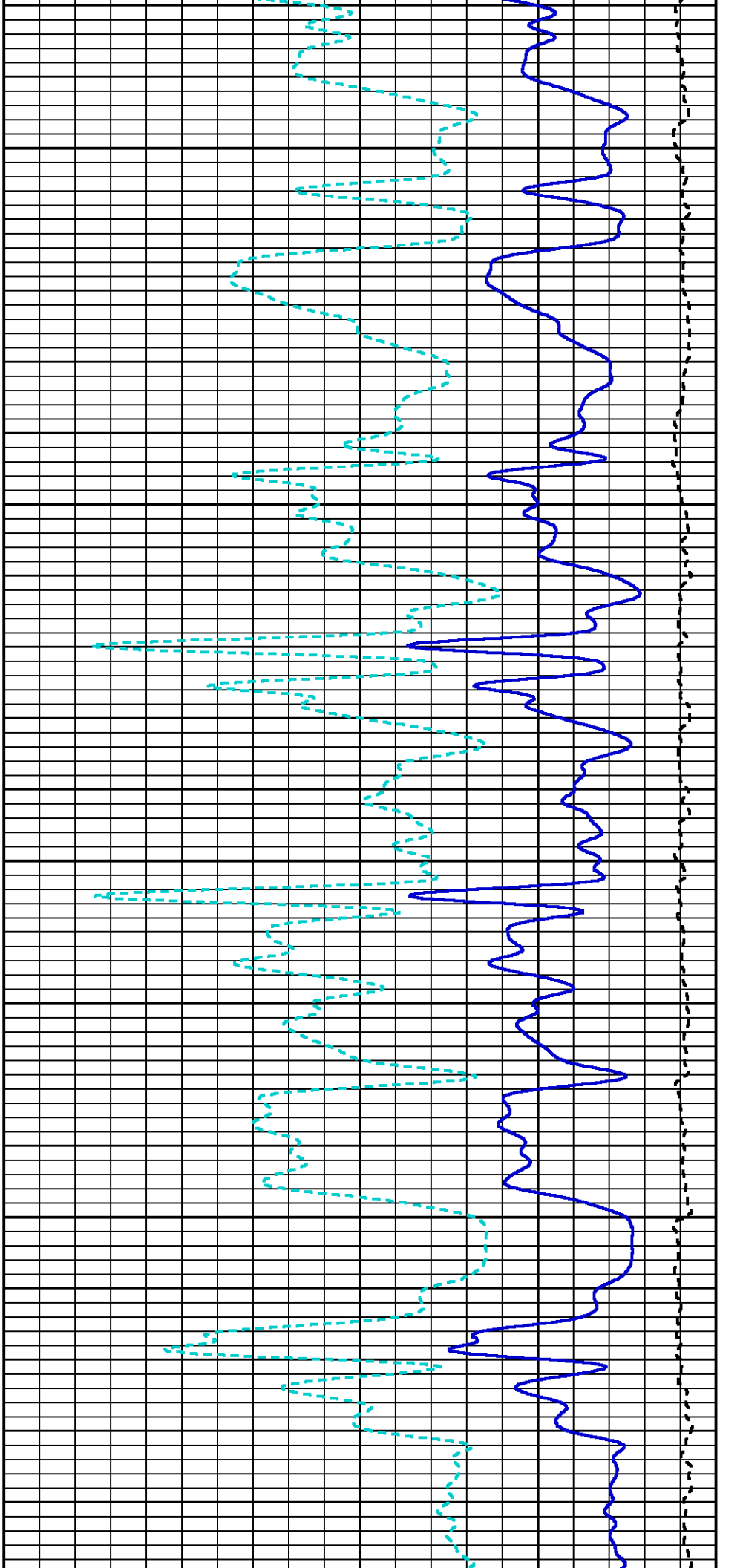




3800

3900

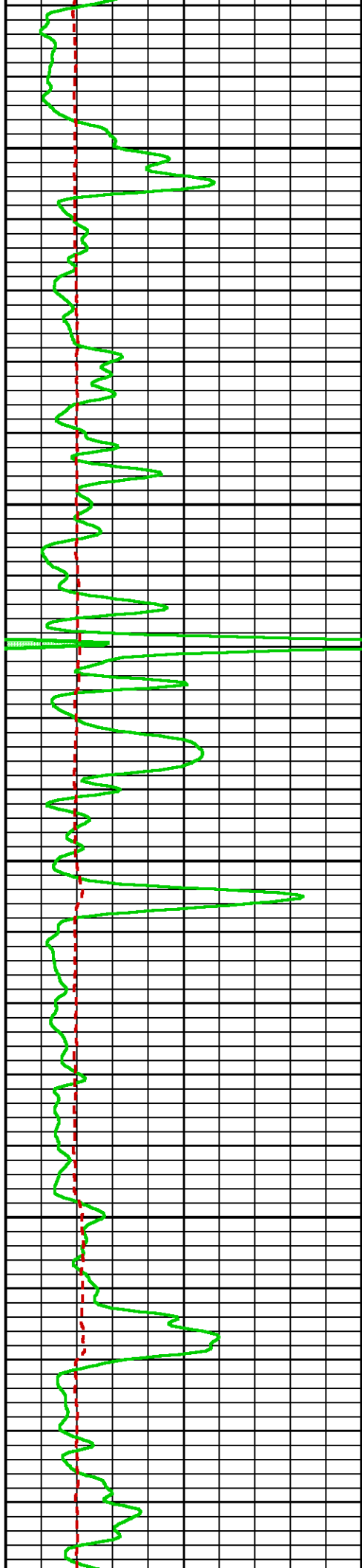


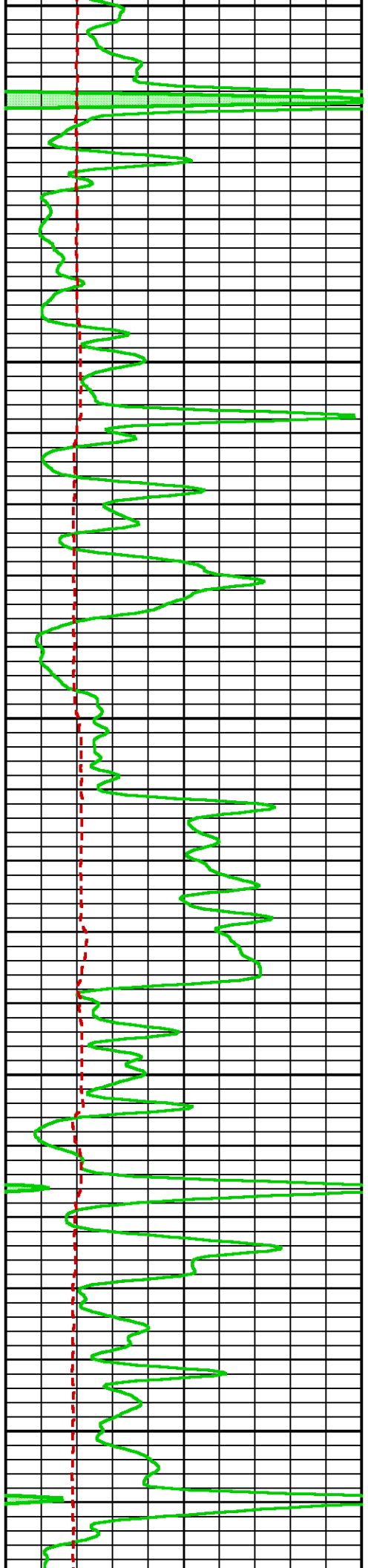
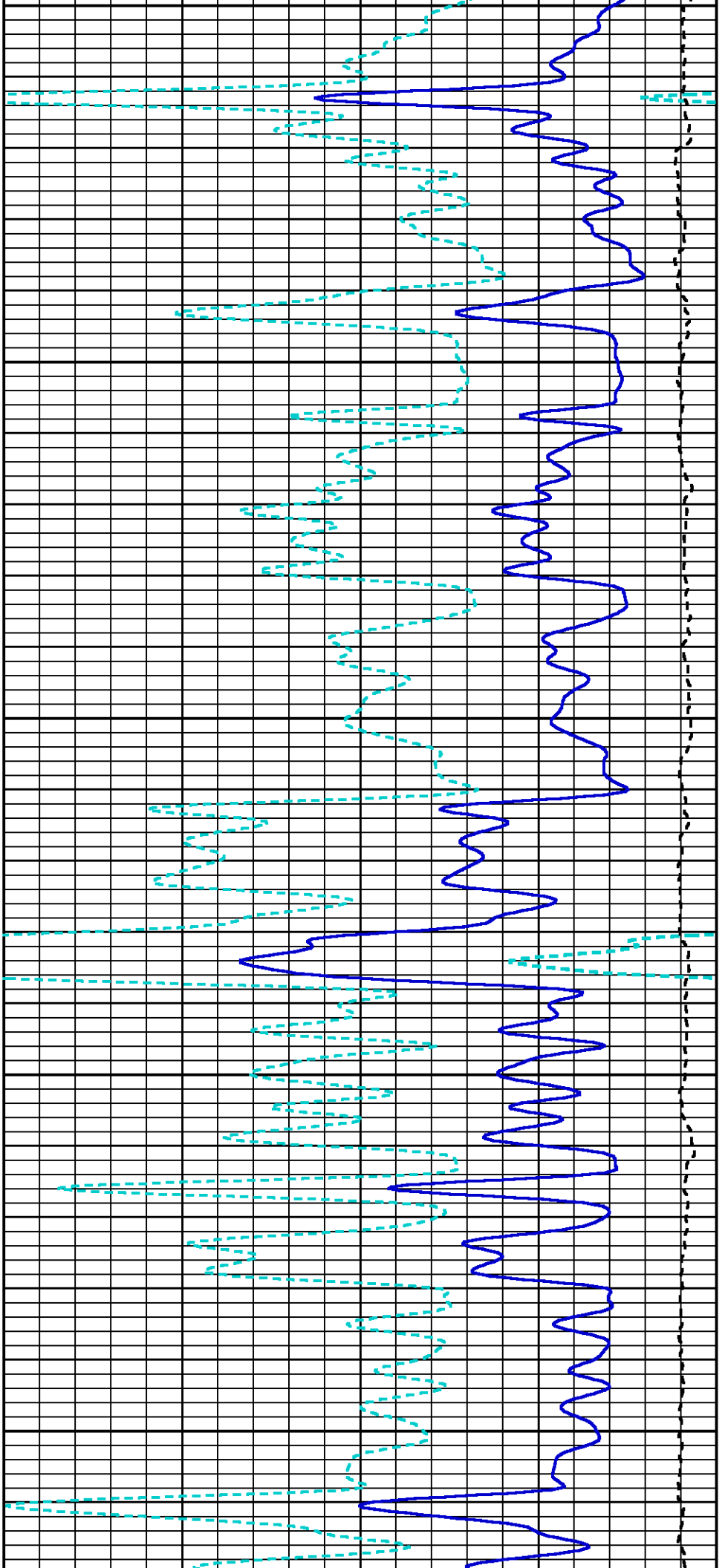


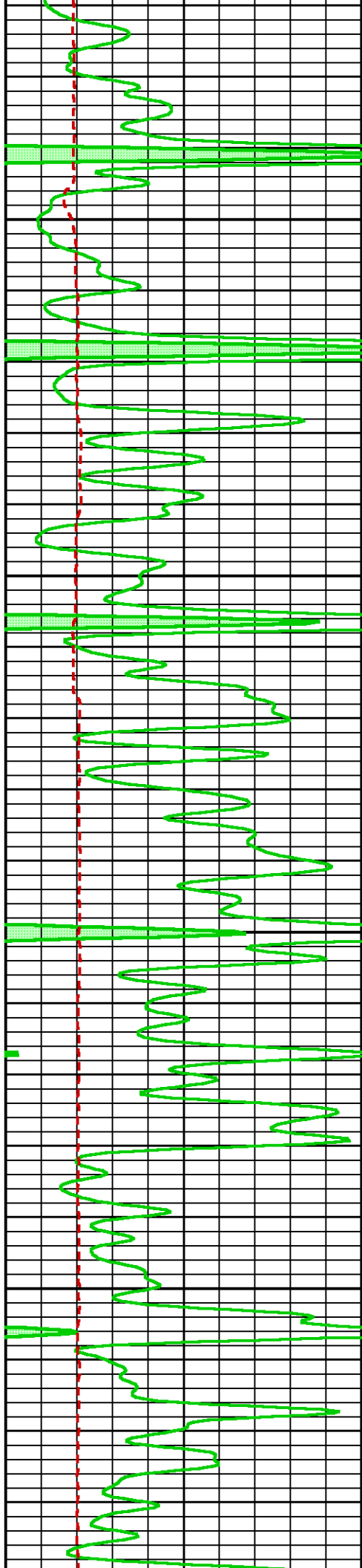
4000

4100

42

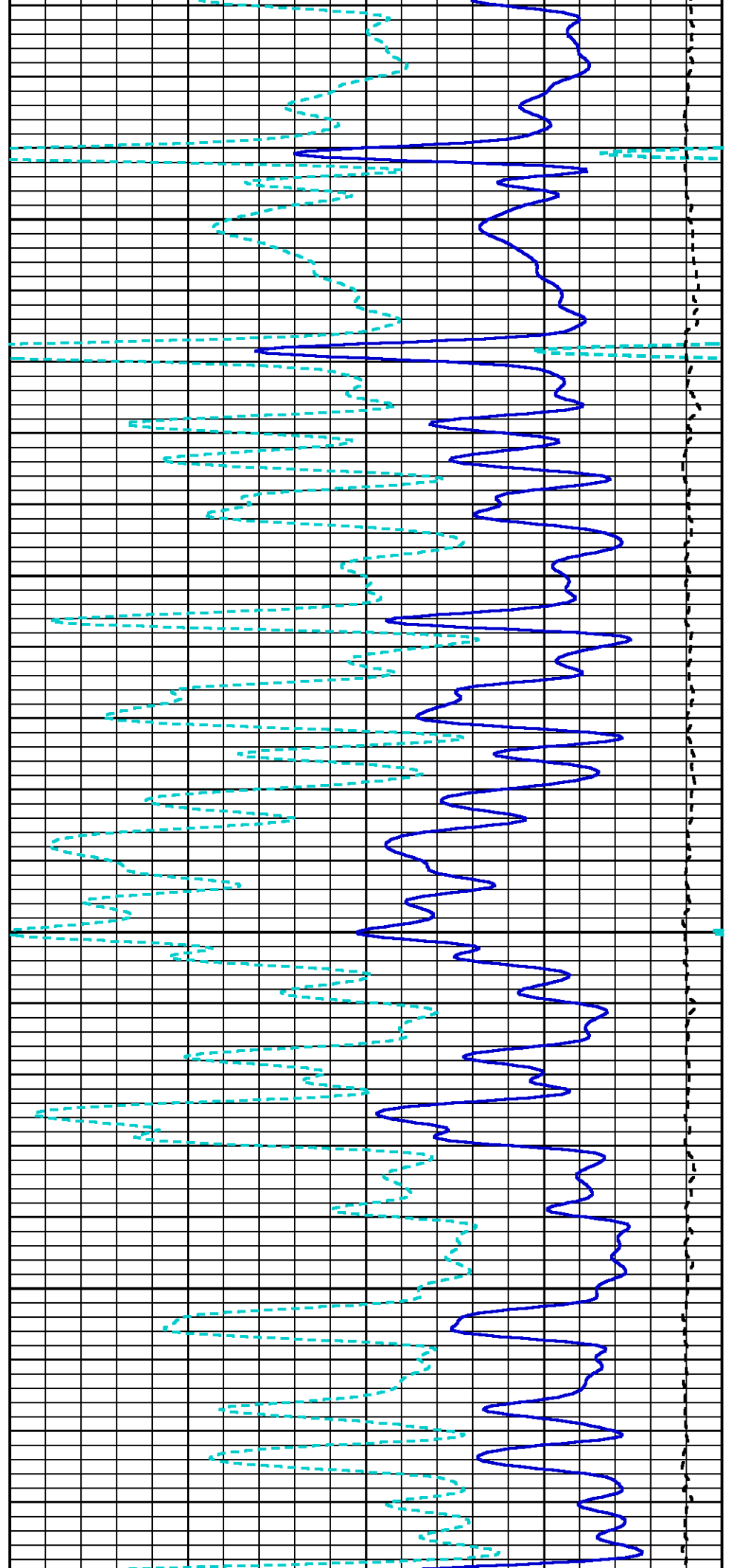






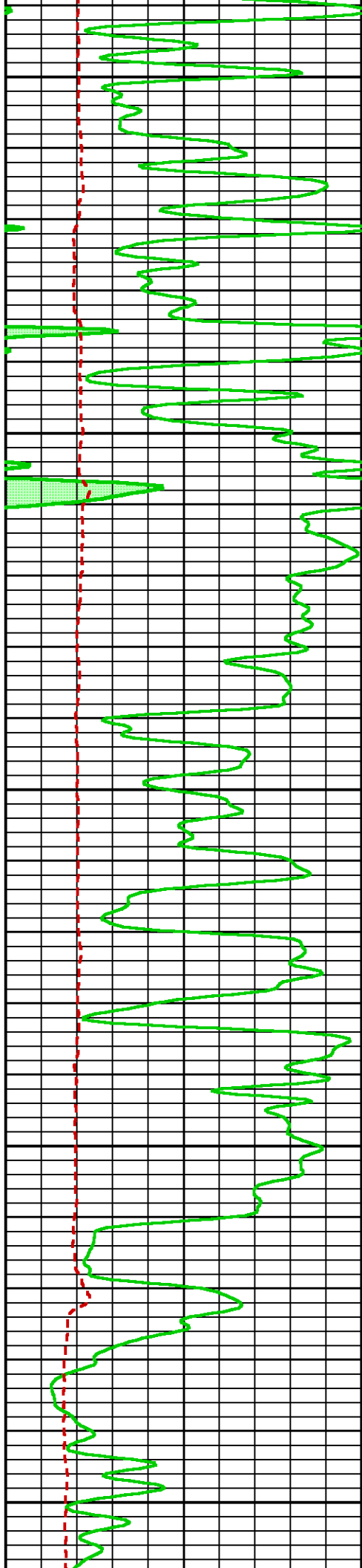
4500

4600



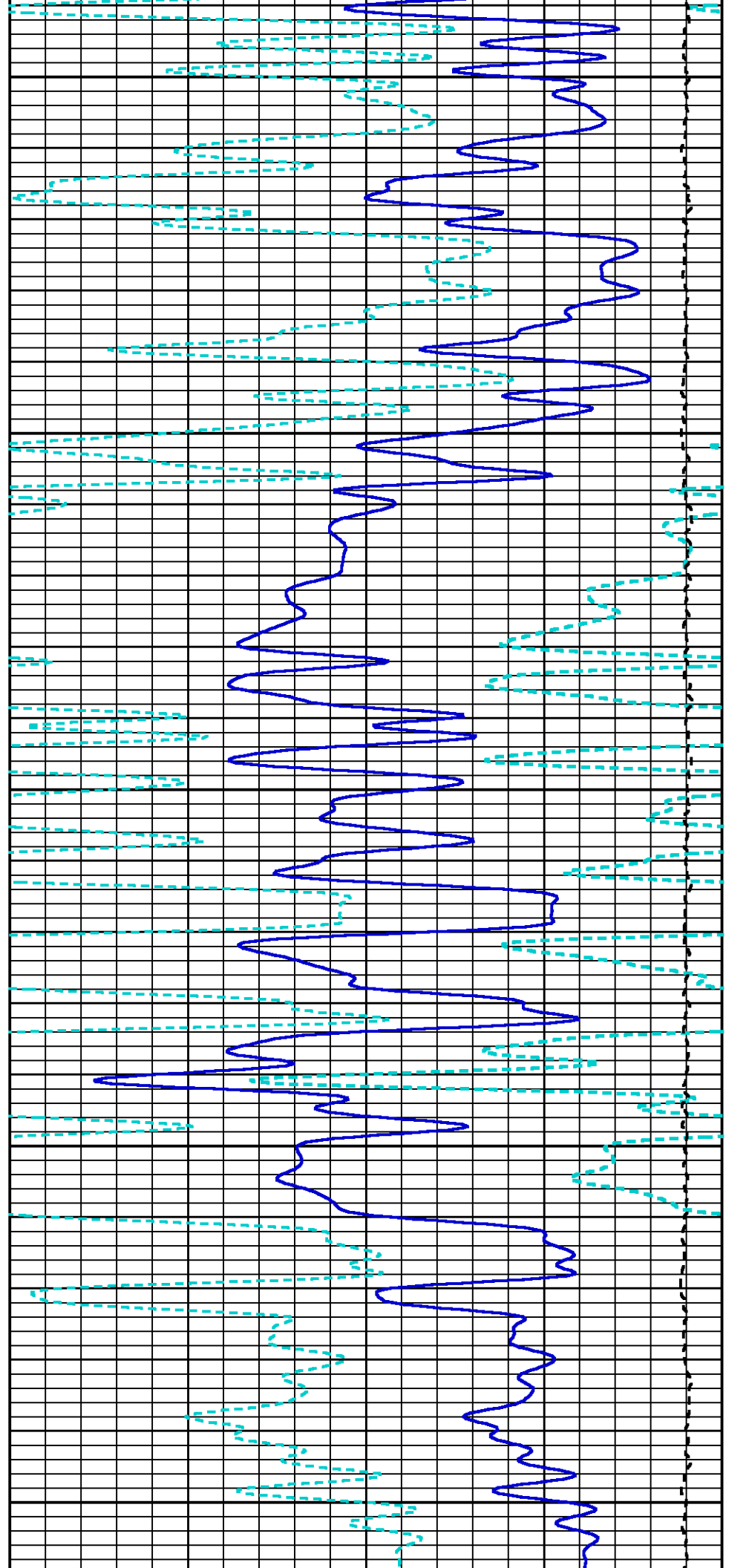
4500

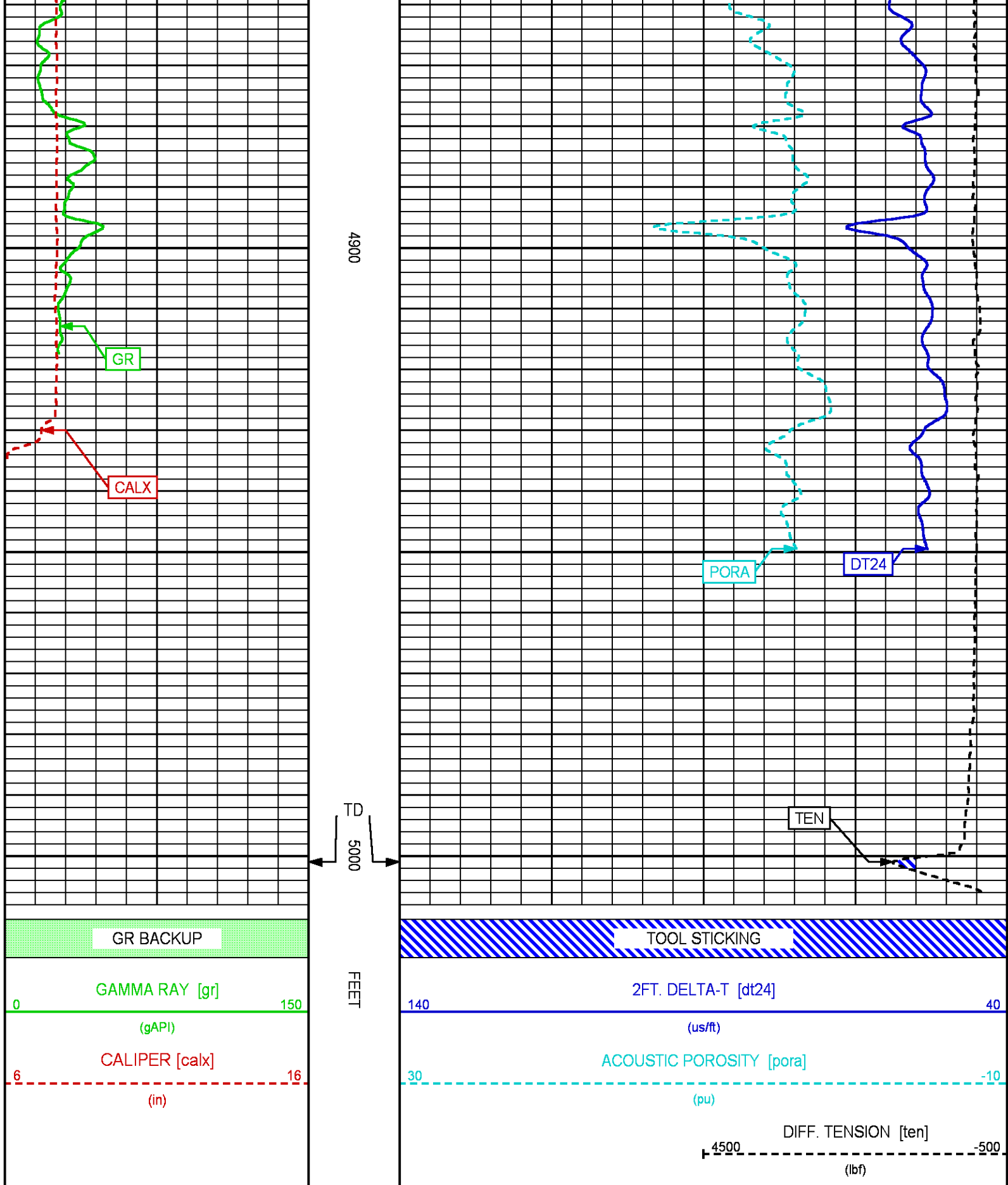
4600



4700

4800





REPEAT LOG

PARAMETER AND FILTER SUMMARY REPORT

FILE: /dat1a/MERIT_CARRIE_15_1/GSALM_DAL01.prm
 LOGGING MODE: DEPTH DIRECTION: UP
 TOP DEPTH: 4625.250 ft BOTTOM DEPTH: 5011.000 ft

SYMMETRIC FILTER

MEASUREMENT TYPE	PARAMETER	VALUE	UNITS	INTERVAL (ft)	
TENSION	FILTER ()	medium (1)		TOP	BOTTOM
GR	FILTER ()	medium (1)		"	"
	FILTER (.i)	medium (1)		"	"
SL	FILTER	medium (1)		"	"
CALIPER	FILTER ()	medium (1)		"	"
DT24	FILTER ()	medium (1)		"	"
	FILTER (.i)	medium (1)		"	"

BOREHOLE & CEMENT

MEASUREMENT TYPE	PARAMETER	VALUE	UNITS	INTERVAL (ft)	
X-Y COMBINED CALIPER PROCESSING	X-Y Caliper	X-Axis		TOP	BOTTOM
BIT SIZE	BIT SIZE	7.875	in	"	"
MUD DENSITY	MUD DENSITY	9.35	lbm/gal	"	"
BOREHOLE CORR DIAMETER SOURCE	CALIPER/FIXED DIA. (slbh*)	USE CALIPER		"	"
BOREHOLE CORR DIAMETER	FIXED DIAMETER (slbh*)	7.875	in	"	"

SL PROCESSING

MEASUREMENT TYPE	PARAMETER	VALUE	UNITS	INTERVAL (ft)	
SL BOREHOLE	OPEN/CASED HOLE	OPEN HOLE		TOP	BOTTOM
	K COMPOUND WEIGHT %	0.00	pct	"	"
	K MUD COMPOUND TYPE	KCL		"	"
SL AUTOGAIN	AUTO GAIN (1329XA 1)	ON		"	"
SL SPECTRUM CALIBRATION	MODE	AUTOMATIC		"	"

ACOUSTIC POROSITY

MEASUREMENT TYPE	PARAMETER	VALUE	UNITS	INTERVAL (ft)	
ACOUSTIC POROSITY	POROSITY TYPE	WYLLIE		TOP	BOTTOM
	DTmatrix	47.60	us/ft	"	"
	DTfluid	190.00	us/ft	"	"
	DTshale	100.00	us/ft	"	"
	MOD. WYLLIE PARM	2.25		"	"
	MOD. R-H-G PARM	2.00		"	"
DELTA T CURVE SELECTION	DT24 SOURCE	FIRST ARRIVAL DT24		"	"

ACOUSTIC PICK CONTROL

MEASUREMENT TYPE	PARAMETER	VALUE	UNITS	INTERVAL (ft)	
DELTA-T REJECTION RANGE	REJECTION DTmin	40	us/ft	TOP	BOTTOM
	REJECTION DTmax	180	us/ft	"	"
FIRST ARRIVAL PICK (3 FT)	SEARCH START OFFSET (sfan1*)	358	us	"	"
	SEARCH START OFFSET (sfan2*)	358	us	"	"
	SEARCH START OFFSET (sfan3*)	358	us	"	"
	SEARCH START OFFSET (sfan4*)	358	us	"	"
	SEARCH WINDOW LENGTH	1200	us	"	"
	THRESHOLD FACTOR	0.30		"	"
	THRESHOLD MINIMUM (sfan1*)	1.8	pct	"	"
	THRESHOLD MINIMUM (sfan2*)	1.8	pct	"	"
	THRESHOLD MINIMUM (sfan3*)	1.8	pct	"	"
	THRESHOLD MINIMUM (sfan4*)	1.8	pct	"	"
	E3 THRESHOLD	OFF		"	"
FIRST ARRIVAL PICK (5 FT)	SEARCH START OFFSET (sfaf1*)	232	us	"	"

SEARCH START OFFSET (sfaf2*)	232	us	"	"
SEARCH START OFFSET (sfaf3*)	232	us	"	"
SEARCH START OFFSET (sfaf4*)	232	us	"	"
SEARCH WINDOW LENGTH	1200	us	"	"
THRESHOLD FACTOR	0.30		"	"
THRESHOLD MINIMUM (sfaf1*)	1.8	pct	"	"
THRESHOLD MINIMUM (sfaf2*)	1.8	pct	"	"
THRESHOLD MINIMUM (sfaf3*)	1.8	pct	"	"
THRESHOLD MINIMUM (sfaf4*)	1.8	pct	"	"
E3 THRESHOLD	OFF		"	"

ACOUSTIC QUALITY CONTROL

MEASUREMENT TYPE	PARAMETER	VALUE	UNITS	INTERVAL (ft)	
CYCLE SKIP LIMIT	CYCLE SKIP LIMIT	100	us	TOP	BOTTOM

ACOUSTIC WAVEFORM FILTER

MEASUREMENT TYPE	PARAMETER	VALUE	UNITS	INTERVAL (ft)	
WAVEFORM FILTER - DELTA T	SURFACE WAVE FILTER	ON		TOP	BOTTOM
	LOW FREQ CUTOFF	4000	Hz	"	"
	HIGH FREQ CUTOFF	30000	Hz	"	"

ACOUSTIC TCC CONTROL PARAMETERS

MEASUREMENT TYPE	PARAMETER	VALUE	UNITS	INTERVAL (ft)	
GENERAL TCC PARAMETERS	AGC	ON		TOP	BOTTOM
	SUBCYCLE LENGTH	50		"	"
	STACK LEVEL	1		"	"
	DSP FILTER	ON		"	"
	SUBSET			"	"
DELTA T TCC PARAMETERS	ACG WINDOW	512	us	"	"
	MOVEOUT	16	us/ft	"	"
	SAMPLE PERIOD	16		"	"
	RX DELAY	96	us	"	"

CURVE DESCRIPTION REPORT

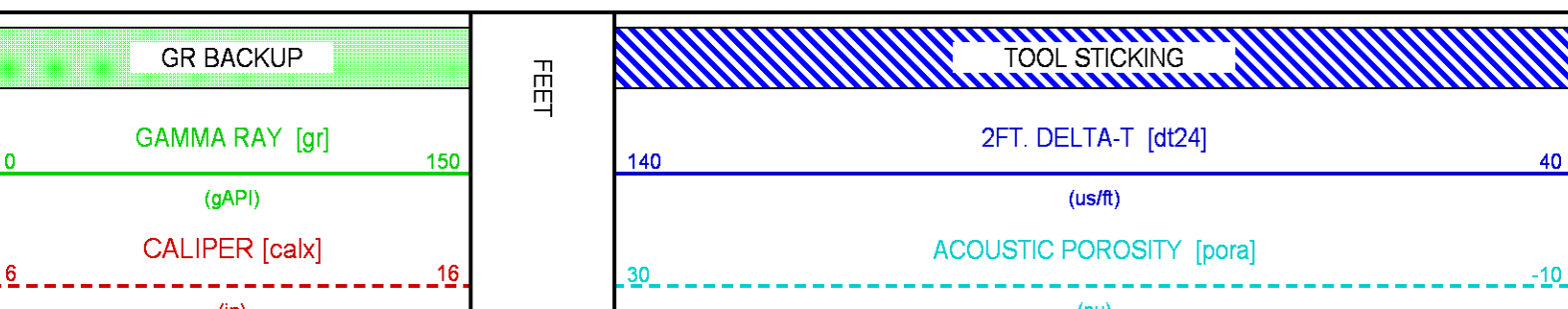
CURVE NAME	CREATION DATE	CURVE DESCRIPTION
F1:CALX	Mar 5 21:14:15 2020	CALIPER FROM X-AXIS OF XY CALIPER(S)
F1:DT24	Mar 5 21:14:15 2020	SLOWNESS OVER 24-INCH INTERVAL
F1:GR	Mar 5 21:14:15 2020	GAMMA RAY
F1:PORA	Mar 5 21:14:15 2020	ACOUSTIC POROSITY
F1:TEN	Mar 5 21:14:15 2020	DIFFERENTIAL TENSION

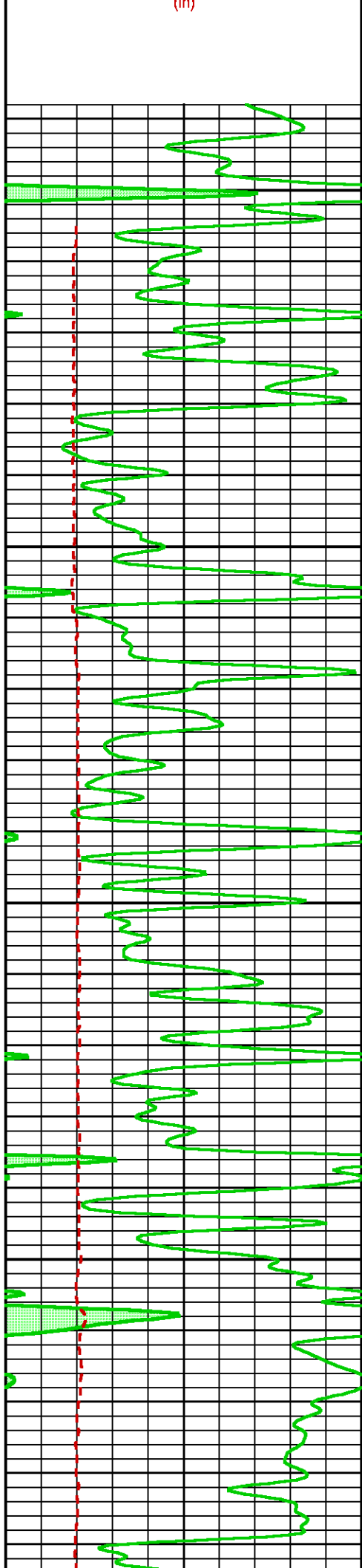
CURVE MEASURE POINT OFFSET

CURVE	OFFSET (ft)	CURVE	OFFSET (ft)	CURVE	OFFSET (ft)	CURVE	OFFSET (ft)
CALX	-71.00	GR	-88.12	TEN	0.00		
DT24	-44.75	PORA	-44.75				

Presentation : cpu6728:/dat1a/MERIT_CARRIE_15_1/DAL_RPEAT_5IN.fvpdf [5"/100' Scale]
Plot Interval : 4538 - 5009.75 Feet

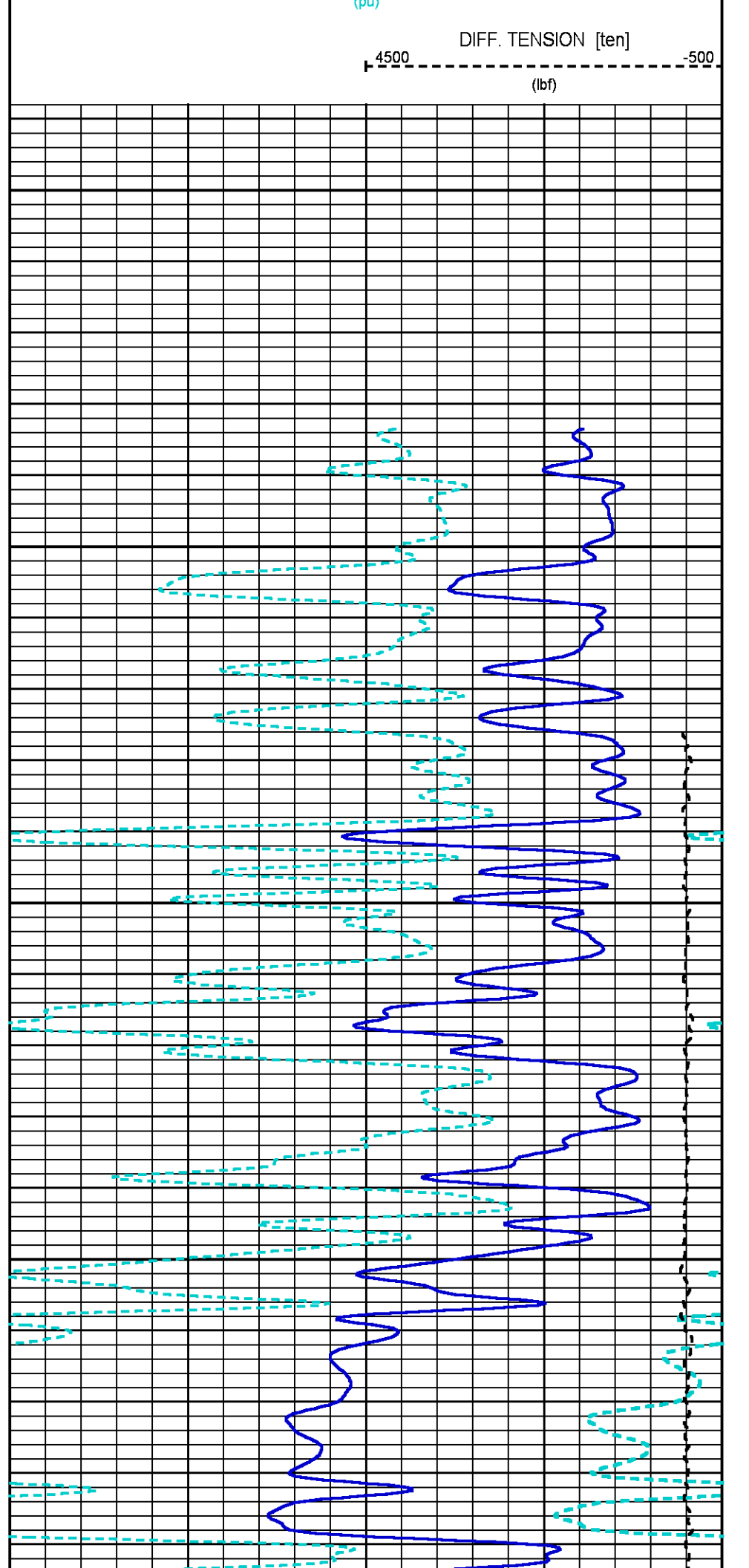
Data File 1 : F1 : cpu6728:/dat1a/MERIT_CARRIE_15_1/RPEAT.xtf
Created On : Mar 5 21:14:15 2020
Company : MERIT ENERGY COMPANY
Well : CARRIE 15-1
Field : WILDCAT
File Interval : 4523.5 - 5011 Feet
OCT : GSALM_DA

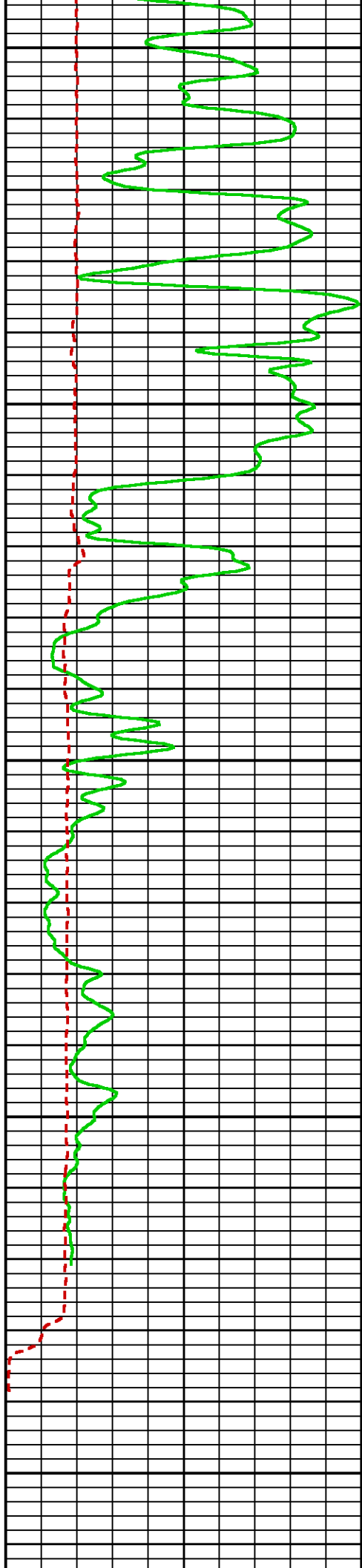




4600

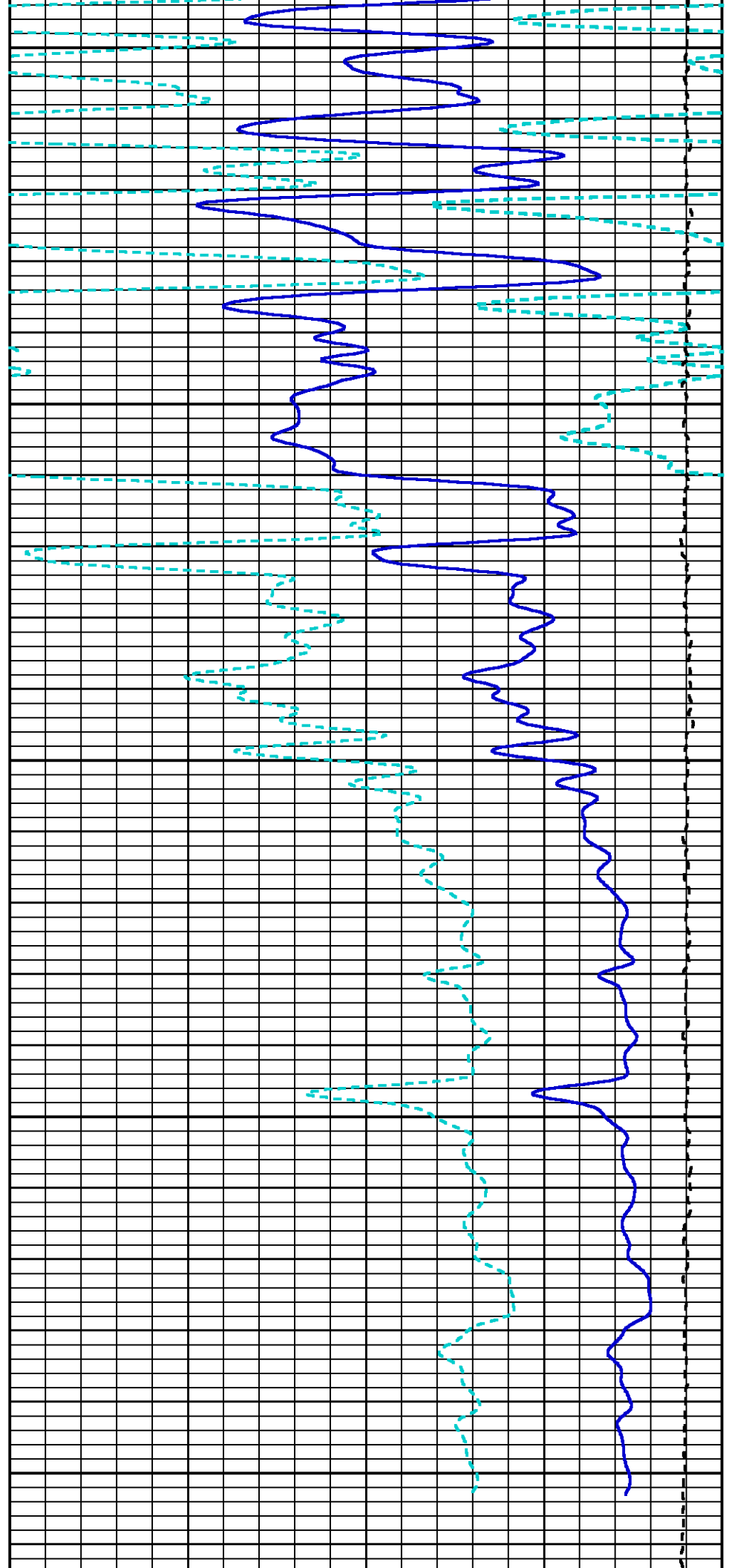
4700

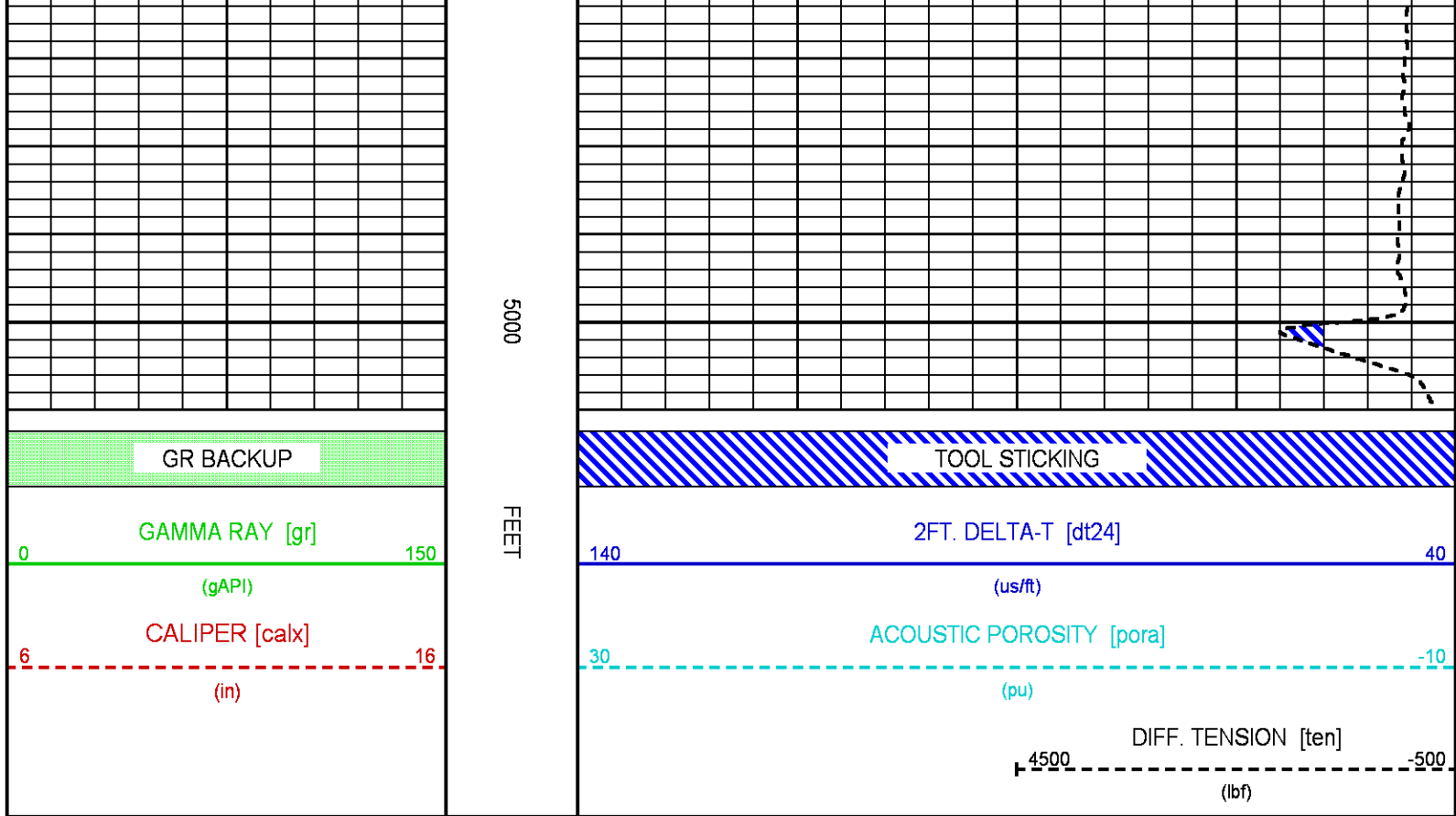




4800

4900





CALIBRATION / VERIFICATION SUMMARY

Source File: /dat1a/MERIT_CARRIE_15_1/GSALM_DAL1p1

GR PRIMARY CALIBRATION SUMMARY						
TOOL #:	1329XA 179184		DATE/TIME PERFORMED:	Thu Jan 30 11:02:11 2020		
UNIT #:	3882TD HL6728		CALB JIG #:	4702NK DA_228		
	BACKGROUND CALBRTR ON (cts/s)	CR DIFF (cts/s)	MULT	BACKGROUND CALBRTR ON (gAPI)	CALBRTR (gAPI)	CALBRTR (gAPI)
GR	206.22	1100.38	0.168	34.60	184.60	150

GR PRIMARY VERIFICATION SUMMARY						
TOOL #:	1329XA 179184		DATE/TIME PERFORMED:	Thu Jan 30 11:09:45 2020		
UNIT #:	3882TD HL6728		VERI JIG #:	4702NK DA_228		
	BACKGROUND CALBRTR ON (cts/s)	MULT	BACKGROUND CALBRTR ON (gAPI)	DIFF. (gAPI)		
GR	201.56	0.168	33.81	184.17	150.36	140.00 180.00

INSTRUMENT CONFIGURATION

Source File: /dat1a/MERIT_CARRIE_15_1/GSALM_DAL1dg



CABLEHEAD TOP : 107.13'
Length : 5.50'
Weight : 24 lbs
Series : CABL338
Mnemonic : CABLH
Measure Point: 2.75' : CABLEHEAD TOP

TTRM SUB
Diameter : 3.63"
Length : 3.83'
Weight : 62 lbs
Series : 3981XA
Mnemonic : TTRM

TEMP MP : 101.93'
RM MP : 101.68'

WTS COMMON REMOTE
Diameter : 3.63"
Length : 6.36'
Weight : 128 lbs
Series : 3514XC
Mnemonic : WTS

DIGITAL SPECTRALOG
Diameter : 3.63"
Length : 7.31'
Weight : 130 lbs
Series : 1329XA
Mnemonic : DSL
Measure Point: 1.60' : GR MP

GR MP : 88.48'

COMPENSATED NEUTRON
Diameter : 3.63"
Length : 7.59'
Weight : 150 lbs
Series : 2446XA
Mnemonic : CN
Measure Point: 2.63' : LSN MP
Measure Point: 2.24' : SSN MP

LSN MP : 81.92'
SSN MP : 81.52'

Z-DENSILOG
Diameter : 4.88"
Length : 11.22'
Weight : 360 lbs
Series : 2234XA
Mnemonic : ZDL
Measure Point: 3.19' : CAL MP
Measure Point: 2.47' : LSD MP
Measure Point: 2.07' : SSD MP

CAL MP : 71.26'
LSD MP : 70.54'
SSD MP : 70.14'

KNUCKLE JOINT (DOUBLE)
Diameter : 3.38"
Length : 4.65'
Weight : 90 lbs
Series : 3939XA
Mnemonic : KNJT

ARRAY ACOUSTILOG ELECTRONICS, 8 CHANNEL
Diameter : 3.38"
Length : 7.82'
Weight : 102 lbs
Series : 1677EA
Mnemonic : XMAC

DIGITAL ACOUSTILOG
Diameter : 3.38"
Length : 12.76'
Weight : 145 lbs
Series : 1680MA
Mnemonic : DAL
Measure Point: 7.95' : T1 MP
Measure Point: 5.95' : T2 MP
Measure Point: 2.95' : R1 MP

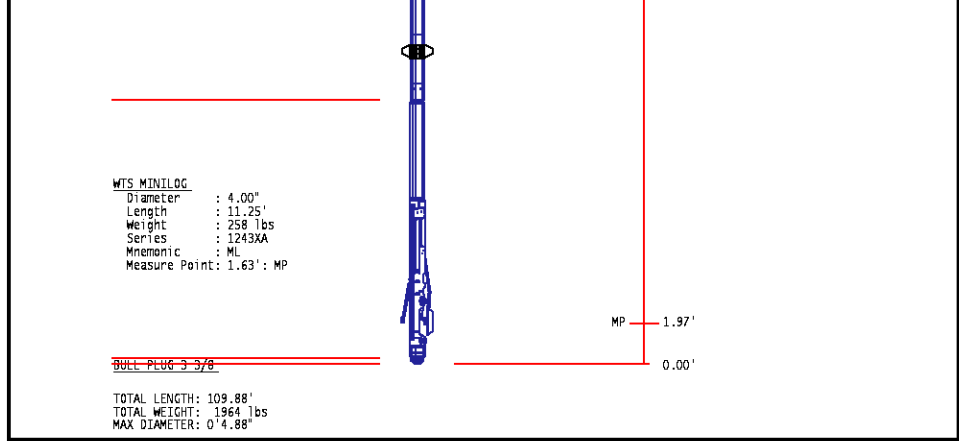
T1 MP : 50.79'
T2 MP : 48.79'
R1 MP : 45.79'

4 ARM BOW SPRING CENTRALIZER
Diameter : 3.38"
Length : 4.12'
Weight : 72 lbs
Series : 4341XA
Mnemonic : CENT

HIGH DEFINITION INDUCTION TOOL
Diameter : 3.62"
Length : 27.13'
Weight : 415 lbs
Series : 1515XA
Mnemonic : HDIL
Measure Point: 13.91' : SP MP
Measure Point: 7.44' : XMTR MP

SP MP : 25.50'
XMTR MP : 19.03'





COMPANY <u>MERIT ENERGY COMPANY</u> WELL <u>CARRIE 15-1</u> FIELD <u>WILDCAT</u> COUNTY <u>FINNEY</u> STATE <u>OKLAHOMA</u>	FILE NO: <hr/>
	API NO: <u>15-093-21978-00-00</u>
LOCATION: <u>1632 FEL & 2315 FNL</u>	ELEVATIONS: KB <u>3033 FT</u> DF <u>3032 FT</u> GL <u>3021 FT</u>
SEC <u>15</u> TWP <u>23S</u> RGE <u>35W</u>	DATE <u>05-Mar-2020</u>