



FILE NO: _____ COMPANY **MERIT ENERGY COMPANY**
 WELL **CARRIE 15-1**
 FIELD **WILDCAT**
 COUNTY **FINNEY** STATE **KANSAS**
 API NO: 15-093-21978-00-00

Ver. 4.15 LOCATION: 1632 FEL & 2315 FNL
 SEC 15 TWP 23S RGE 35W
 OTHER SERVICES: DAL/GR, HDIL/GR, ZDLCN/GR, ZDLCN/HDIL/GR, ML/GR

PERMANENT DATUM GL ELEVATION 3020.6 FT
 LOG MEASURED FROM KB 12 FT ABOVE P.D.
 DRILL. MEAS. FROM KB
 ELEVATIONS: KB 3033 FT, DF 3032 FT, GL 3021 FT

DATE	05-Mar-2020		
RUN	1	1	
TRIP			
SERVICE ORDER	US166109		
DEPTH DRILLER	5000 FT		
DEPTH LOGGER	5001 FT		
BOTTOM LOGGED INTERVAL	5001 FT		
TOP LOGGED INTERVAL	3800 FT		
CASING DRILLER	8.625 IN	@ 1832 FT	@
CASING LOGGER	1828 FT		
BIT SIZE	7.875 IN		
TYPE OF FLUID IN HOLE	OBM		
DENSITY	9.35 LB/G	52 CP	
VISCOSITY		6.4 C3	
PH	11		
FLUID LOSS			
SOURCE OF SAMPLE	PIT		
RM AT MEAS. TEMP.	3.038 OHMM	@ 75 DEGF	@
RMC AT MEAS. TEMP.	2.278 OHMM	@ 75 DEGF	@
RMC AT MEAS. TEMP.	3.797 OHMM	@ 75 DEGF	@
SOURCE OF RMC	CALCULATED	CALCULATED	
RM AT BHT	2.024 OHMM	@ 116 DEGF	@
TIME SINCE CIRCULATION	5 HRS		
MAX. RECORDED TEMP.	116 DEGF		
EQUIP. NO.	HL-6670	OKC,OK	
LOCATION	S. Yassa		
RECORDED BY	MR. M. Lange		
WITNESSED BY			

IN MAKING INTERPRETATIONS OF LOGS OUR EMPLOYEES WILL GIVE THE CUSTOMER THE BENEFIT OF THEIR BEST JUDGEMENT. BUT SINCE ALL INTERPRETATIONS ARE OPINIONS BASED ON INFERENCES FROM ELECTRICAL OR OTHER MEASUREMENTS, WE CANNOT, AND WE DO NOT GUARANTEE THE ACCURACY OR CORRECTNESS OF ANY INTERPRETATION. WE SHALL NOT BE LIABLE OR RESPONSIBLE FOR ANY LOSS, COST, DAMAGES, OR EXPENSES WHATSOEVER INCURRED OR SUSTAINED BY THE CUSTOMER RESULTING FROM ANY INTERPRETATION MADE BY ANY OF OUR EMPLOYEES.

REMARKS

RUN 1 TRIP 1: 1 OPERATION IN WELL
 HDIL/DAL/ML/ZDL/CN/GR RUN IN COMBINATION

CVOL CALCULATED FOR PROPOSED 5.5" CASING
 CALIPER VERIFIED IN CASING

ZDL & CN RUN ON LIMESTONE MATRIX
 RHO MATRIX: 2.68 G/CC

HDIL RUN WITH 0.5" STANDOFFS
 ABC TO CALCULATED: MUD CONDUCTIVITY

ACOUSTIC POROSITY RUN ON LIMESTONE MATRIX

WELLBORE RUGOSITY WILL AFFECT THE ACCURACY OF MEASUREMENTS

CREW: D.HUTCHISON, K.REED
 RIG: DUKE RIG 9

EQUIPMENT DATA

RUN	TRIP	TOOL	SERIES NO.	SERIAL NO.	POSITION
1	1	TTRM	3981 XA	10045153	FREE
1	1	COMREM	3514 XC	12367091	FREE
1	1	DGR	1329 XA	179184	FREE
1	1	CN	2446 XA	10162846	DECENTRALIZED
1	1	ZDL	2234 XA	10495112	PAD DEVICE
1	1	DKJT	3939 XA	186262	FREE
1	1	DAL	1677EA/1680MA	10192401/151555	CENTRALIZED
1	1	CENT	4341XA	177195	CENTRALIZED
1	1	HDIL	1515 EA/MA	10059243/179553	1.5" STANDOFFS
1	1	ML	1243XA	10676690	PAD DEVICE

MAIN LOG 5"/100FT SCALE

ECLIPS 7.0i ECLIPS General Release Rel 7.0i Thu Jun 08 20:36:10 CDT 2017

Updates: 1,32 Patches: 7

Plotted: Fri Mar 6 01:02:43 2020

PARAMETER AND FILTER SUMMARY REPORT

FILE: /dat1a/MERIT_CARRIE_15_1/GSALM_DAL02.prm
 LOGGING MODE: DEPTH DIRECTION: UP
 TOP DEPTH: 1723.250 ft BOTTOM DEPTH: 5007.500 ft

SYMMETRIC FILTER

MEASUREMENT TYPE	PARAMETER	VALUE	UNITS	INTERVAL (ft)	
TENSION	FILTER ()	medium (1)		TOP	BOTTOM
GR	FILTER ()	medium (1)		"	"
	FILTER (.h)	medium (1)		"	"
SL	FILTER	medium (1)		"	"
CN	FILTER ()	medium (1)		"	"
	FILTER (.h)	medium (1)		"	"
CALIPER	FILTER ()	medium (1)		"	"
	FILTER (.h)	medium (1)		"	"
ZDL MED RES	FILTER (hrd1*)	medium		"	"
	FILTER (hrd1s*)	medium		"	"
	FILTER (hrd2*)	medium		"	"
	FILTER (hrd2s*)	medium		"	"
	FILTER (soft*)	medium		"	"
ZDL HIGH RES	FILTER (hrd1*)	light		"	"
	FILTER (hrd1s*)	light		"	"
	FILTER (hrd2*)	light		"	"
	FILTER (hrd2s*)	light		"	"
	FILTER (soft*)	light		"	"

BOREHOLE & CEMENT

MEASUREMENT TYPE	PARAMETER	VALUE	UNITS	INTERVAL (ft)	
CASING - BOREHOLE & CEMENT VOLUME	CASING O.D.	5.500	in	TOP	BOTTOM
	CASING THICKNESS	0.000	in	"	"
X-Y COMBINED CALIPER PROCESSING	X-Y Caliper	X-Axis		"	"
BIT SIZE	BIT SIZE	7.875	in	"	"
MUD DENSITY	MUD DENSITY	9.35	lbm/gal	"	"
BOREHOLE CORR DIAMETER SOURCE	CALIPER/FIXED DIA. (cnbh*)	USE CALIPER		"	"
	CALIPER/FIXED DIA. (sibh*)	USE CALIPER		"	"
	CALIPER/FIXED DIA. (zdbh*)	USE CALIPER		"	"
BOREHOLE CORR DIAMETER	FIXED DIAMETER (cnbh*)	7.875	in	"	"
	FIXED DIAMETER (sibh*)	7.875	in	"	"

SL PROCESSING

MEASUREMENT TYPE	PARAMETER	VALUE	UNITS	INTERVAL (ft)	
SL BOREHOLE	OPEN/CASED HOLE	OPEN HOLE		TOP	BOTTOM
	K COMPOUND WEIGHT %	0.00	pct	"	"
	K MUD COMPOUND TYPE	KCL		"	"
SL AUTOGAIN	AUTO GAIN (1329XA 1)	ON		"	"
SL SPECTRUM CALIBRATION	MODE	AUTOMATIC		"	"

CN PROCESSING

MEASUREMENT TYPE	PARAMETER	VALUE	UNITS	INTERVAL (ft)	
2446 CN MATRIX	2446 MATRIX	LIMESTONE		TOP	BOTTOM
CN SALINITY CORRECTION	SALINITY CORR (2446)	SAL & BHSIZE ON		"	"
	SALINITY	950	ppm	"	"
CN TOOL STANDOFF	ENABLE STANDOFF CORR	OFF		"	"
	STANDOFF AMOUNT	0.00	in	"	"
CN CASING & CEMENT CORRECTION	CORRECTION	OFF		"	"
	BIT SIZE BEHIND CSNG	7.875	in	"	"

ZDL PROCESSING

MEASUREMENT TYPE	PARAMETER	VALUE	UNITS	INTERVAL (ft)	
MUD DENSITY	MUD DENSITY	9.35	lbm/gal	TOP	BOTTOM
DENSITY POROSITY	RHOmatrix	2.710	g/cm3	"	"
	RHOfluid	1.000	g/cm3	"	"
ZDL	DENX TRACKING	ON		"	"
TRACKING TIME	Logging Spd for Gain	Over 10 ft/min		"	"

CURVE DESCRIPTION REPORT

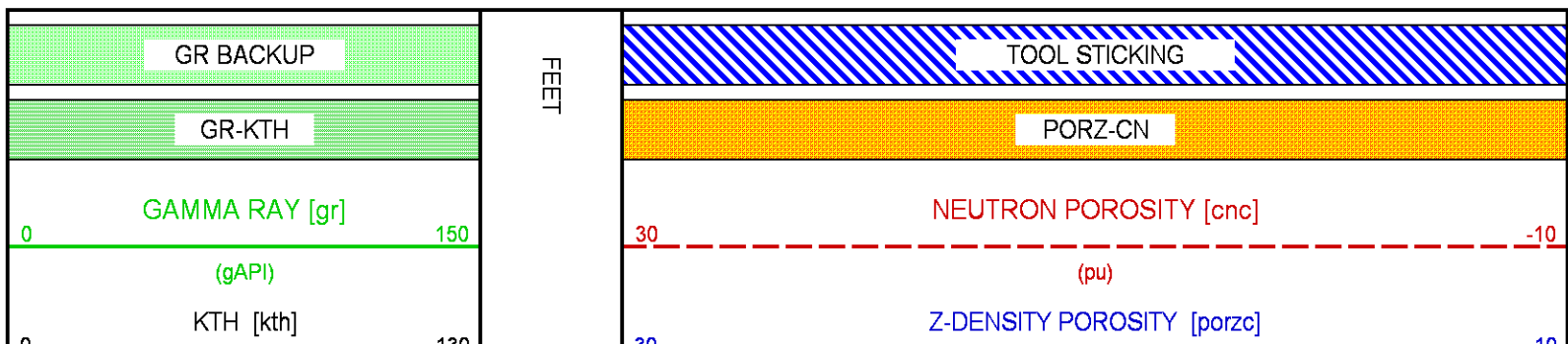
CURVE NAME	CREATION DATE	CURVE DESCRIPTION
F1:BVOL	Mar 5 21:33:50 2020	BOREHOLE VOLUME
F1:CALX	Mar 5 21:33:50 2020	CALIPER FROM X-AXIS OF XY CALIPER(S)
F1:CNC	Mar 5 21:33:50 2020	BOREHOLE SIZE CORRECTED COMPENSATED NEUTRON POROSITY
F1:CVOL	Mar 5 21:33:50 2020	CEMENT VOLUME
F1:GR	Mar 5 21:33:50 2020	GAMMA RAY
F1:KTH	Mar 5 21:33:50 2020	STRIPPED POTASSIUM-THORIUM
F1:PE	Mar 5 21:33:50 2020	PHOTO ELECTRIC CROSS-SECTION
F1:PORZC	Mar 5 21:33:50 2020	CORRECTED POROSITY
F1:TEN	Mar 5 21:33:50 2020	DIFFERENTIAL TENSION
F1:ZCOR	Mar 5 21:33:50 2020	DENSITY CORRECTION

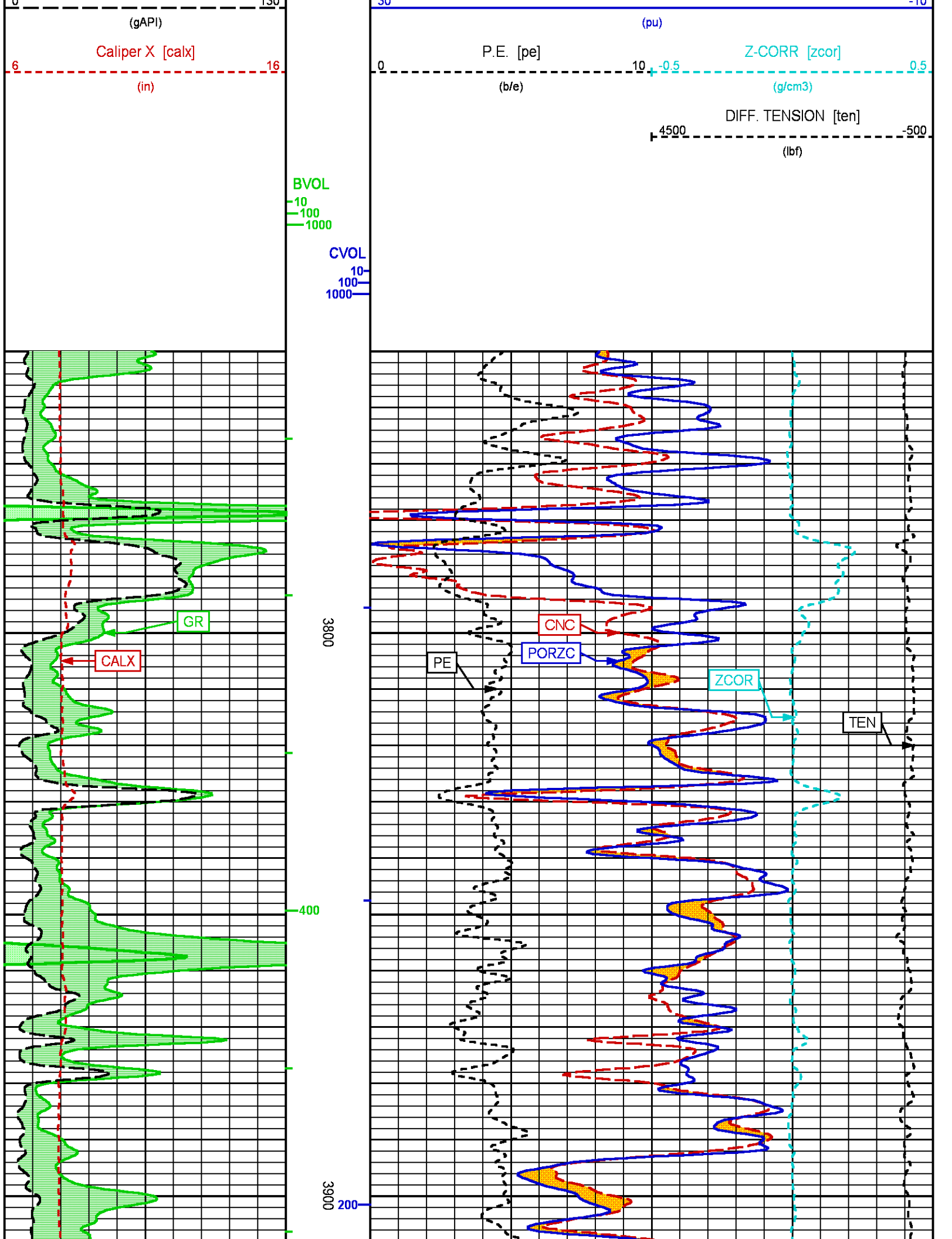
CURVE MEASURE POINT OFFSET

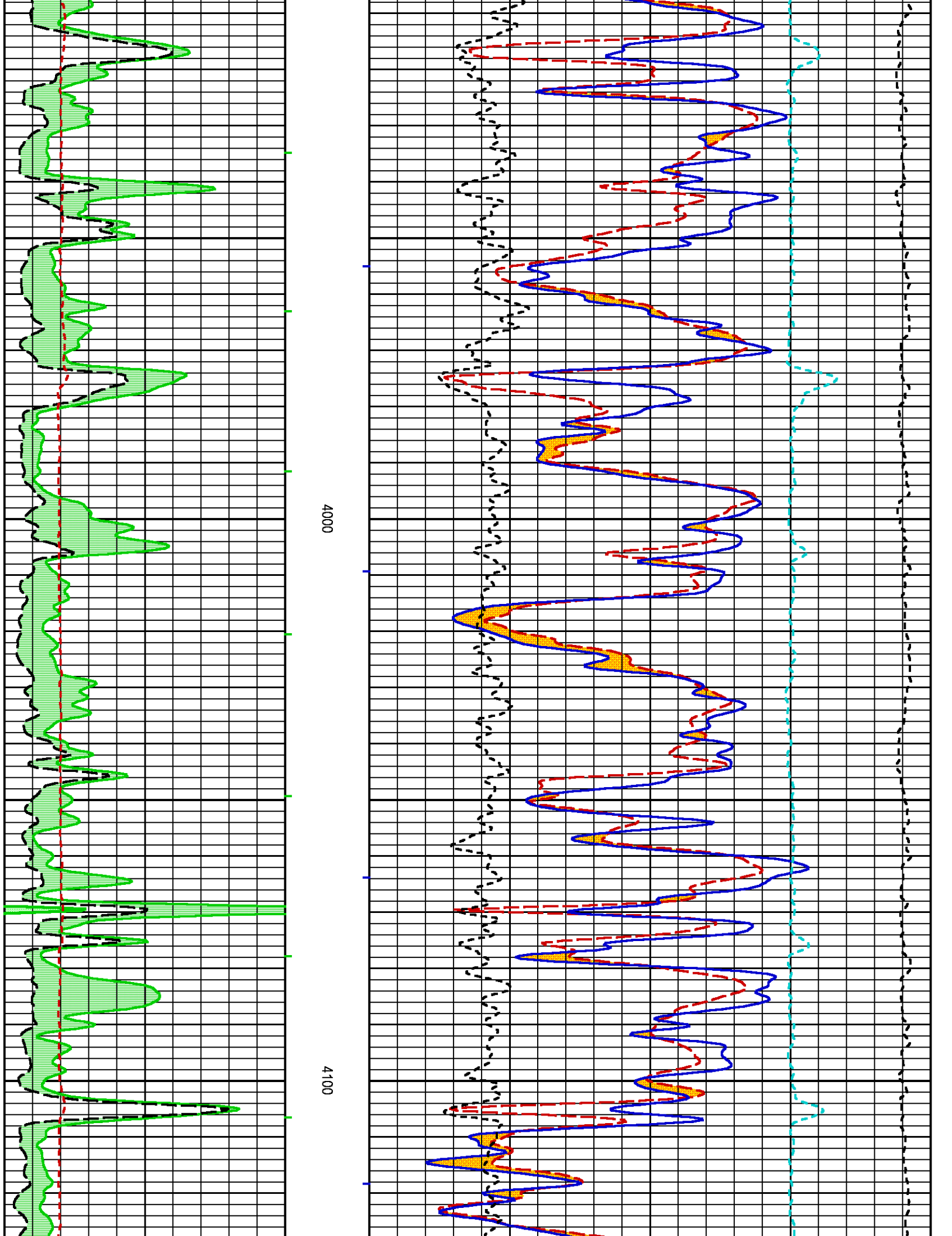
CURVE	OFFSET (ft)	CURVE	OFFSET (ft)	CURVE	OFFSET (ft)	CURVE	OFFSET (ft)
CALX	-71.00	GR	-88.12	PE	-70.25	TEN	0.00
CNC	-81.25	KTH	-88.12	PORZC	-70.25	ZCOR	-70.25

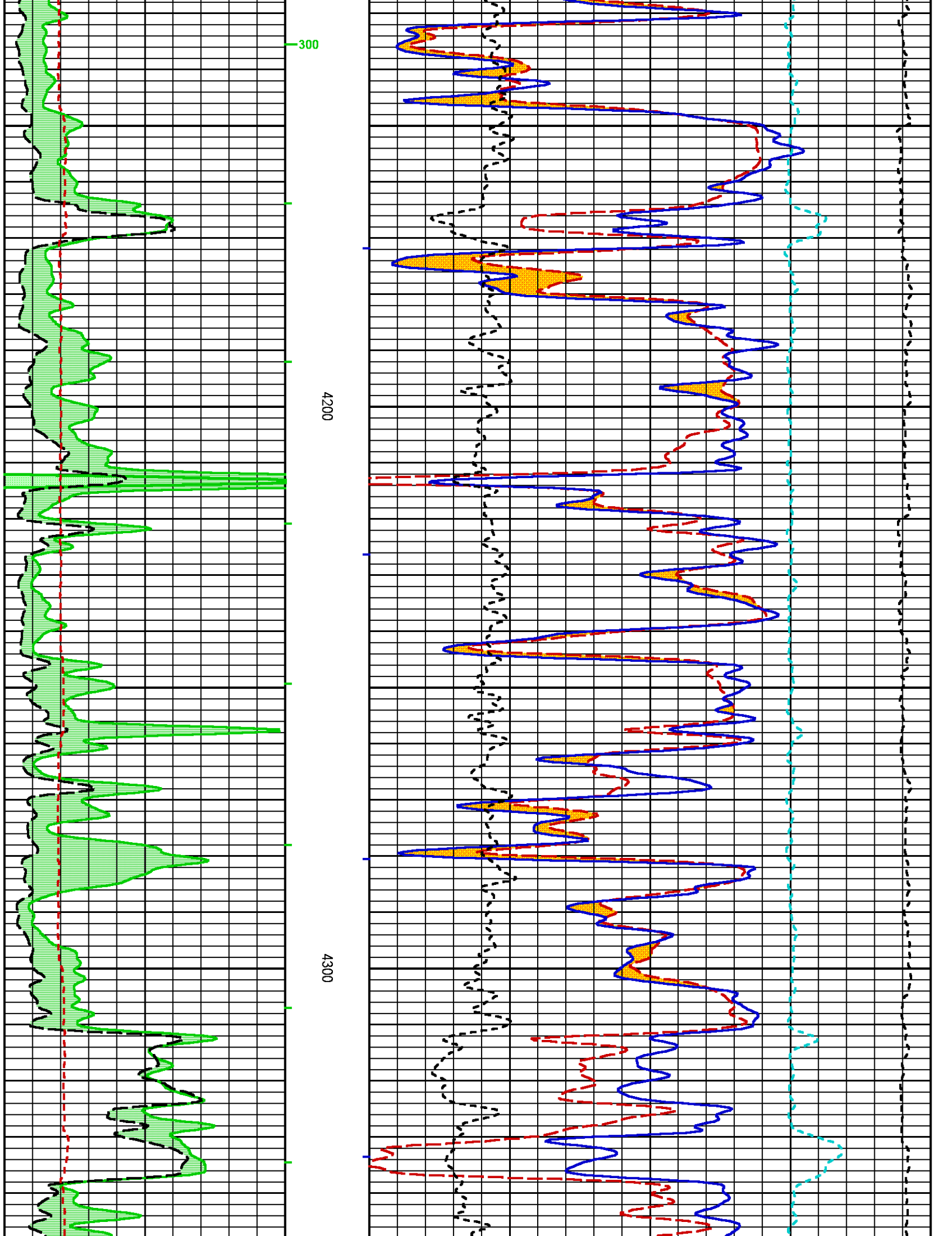
Presentation : cpu6728:zdl-cn+01-MAIN-5.fvpdf [5"/100' Scale]
Plot Interval : 3750 - 5006.25 Feet

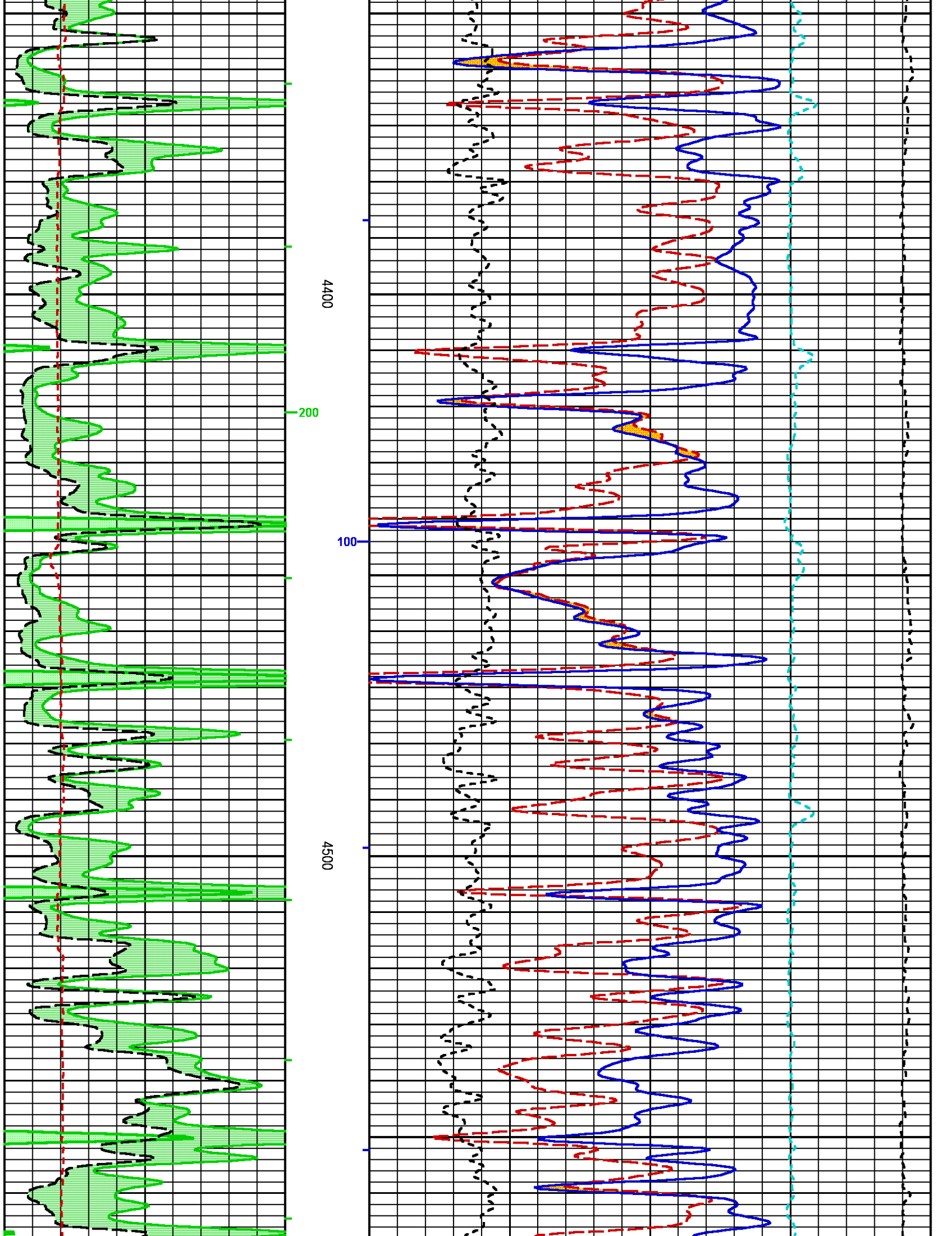
Data File 1 : F1 : cpu6728:/dat1a/MERIT_CARRIE_15_1/MAIN.xtf
Created On : Mar 5 21:33:50 2020
Company : MERIT ENERGY COMPANY
Well : CARRIE 15-1
Field : WILDCAT
File Interval : 1621.75 - 5007.5 Feet
OCT : GSALM_DA

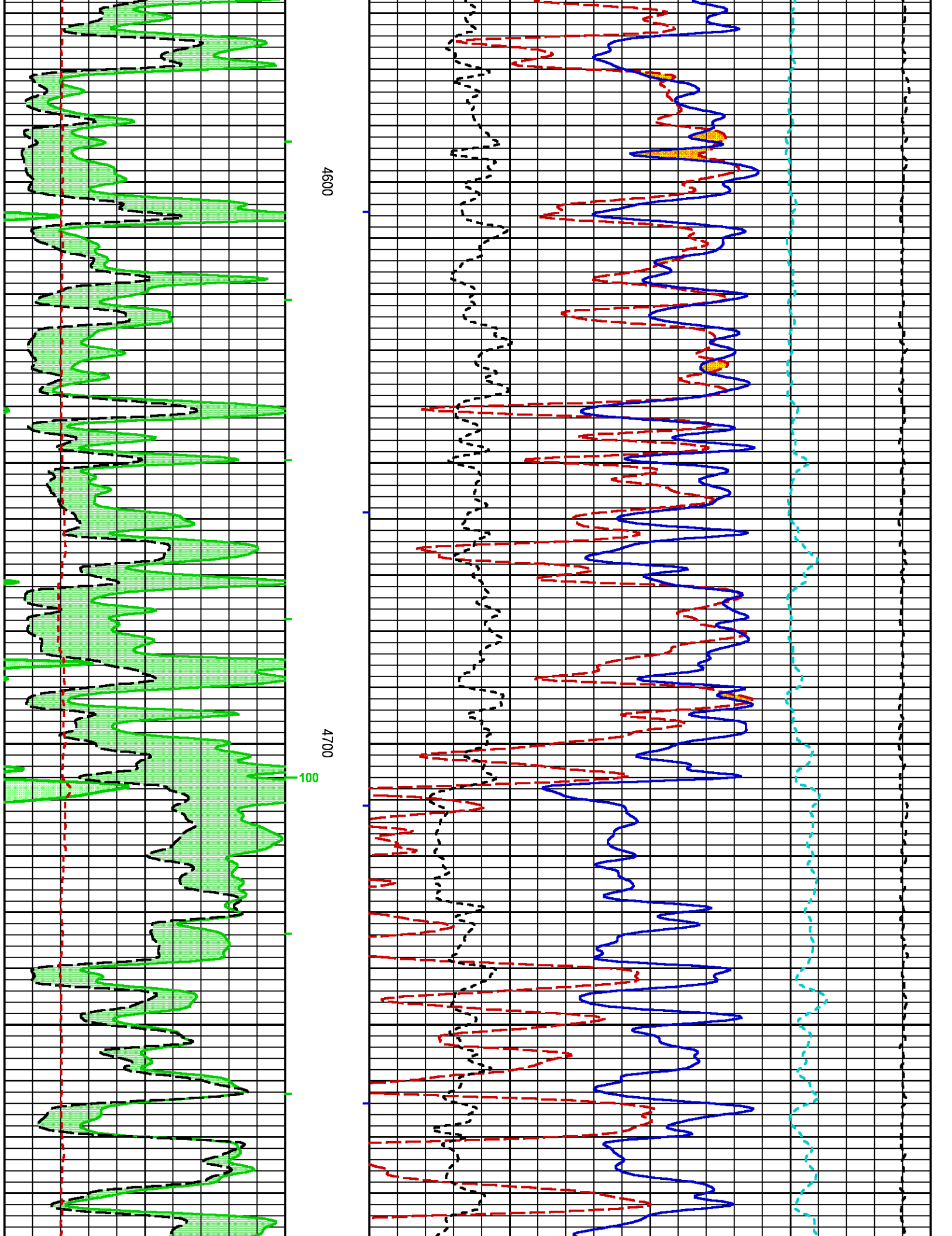


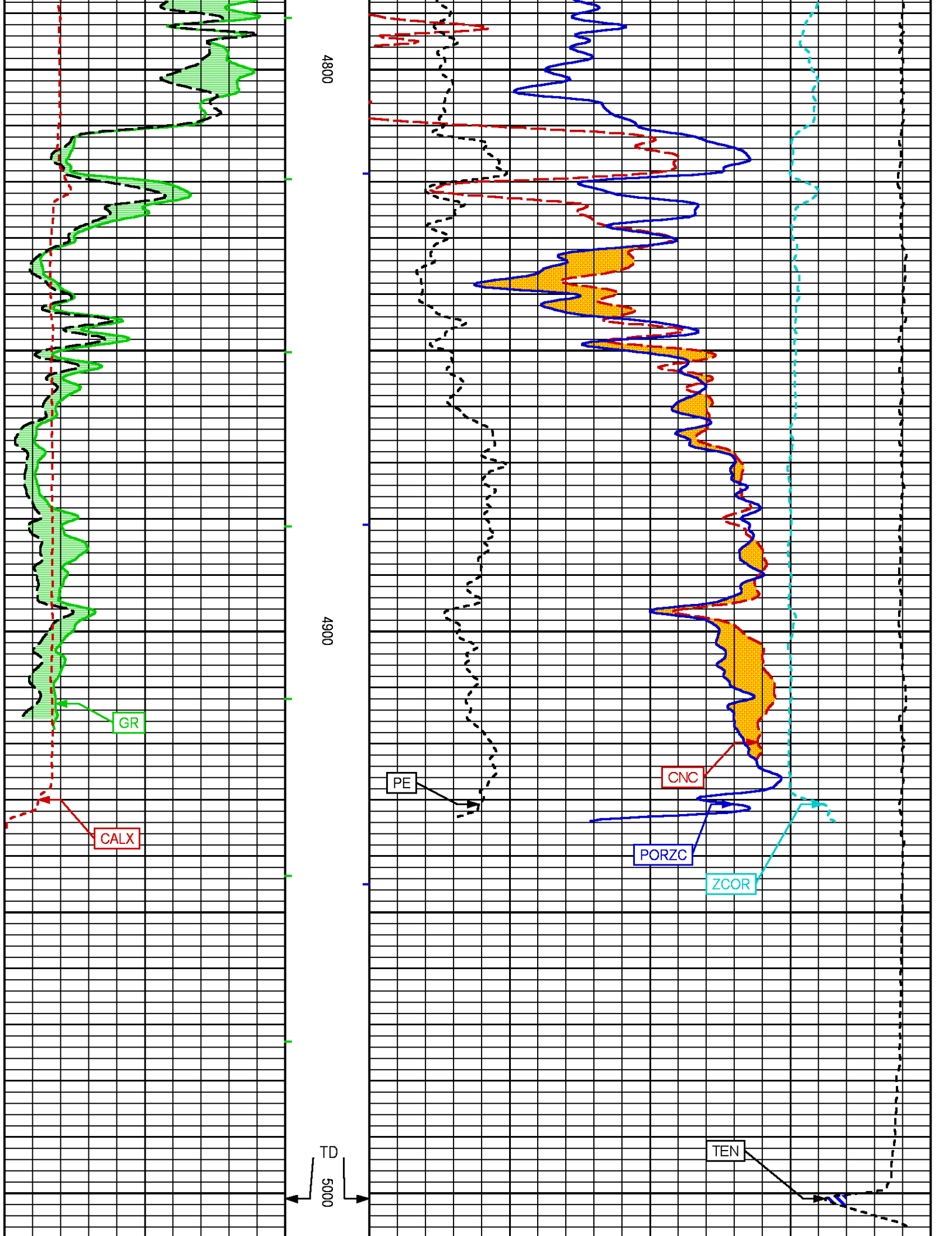


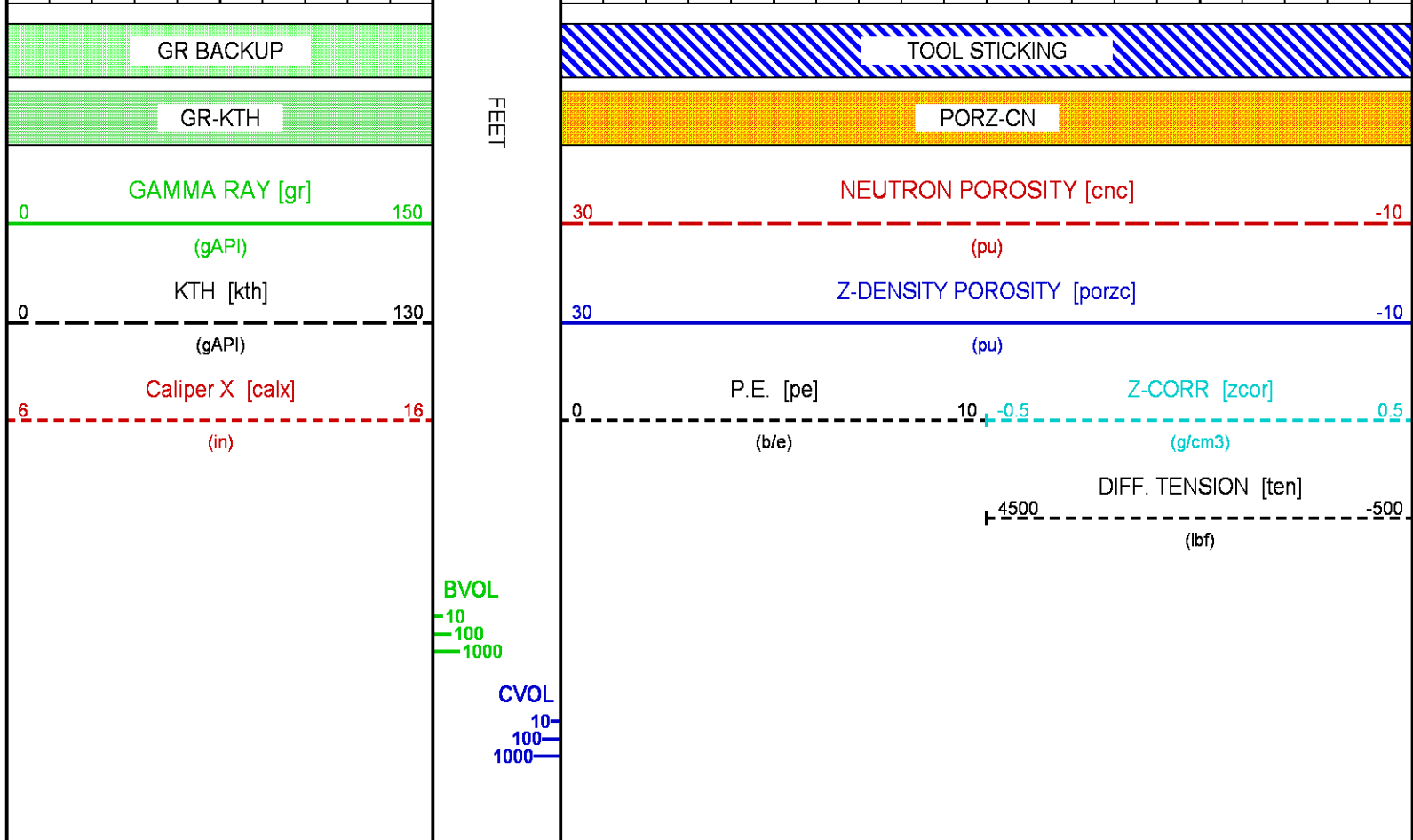












REPEAT LOG

ECLIPS 7.0i ECLIPS General Release Rel 7.0i Thu Jun 08 20:36:10 CDT 2017
 Updates: 1,32 Patches: 7

Plotted: Fri Mar 6 01:02:58 2020

PARAMETER AND FILTER SUMMARY REPORT

FILE: /dat1a/MERIT_CARRIE_15_1/GSALM_DAL01.prm
 LOGGING MODE: DEPTH DIRECTION: UP
 TOP DEPTH: 4625.250 ft BOTTOM DEPTH: 5011.000 ft

SYMMETRIC FILTER

MEASUREMENT TYPE	PARAMETER	VALUE	UNITS	INTERVAL (ft)
TENSION	FILTER ()	medium (1)		TOP BOTTOM
GR	FILTER ()	medium (1)		" "
	FILTER (.h)	medium (1)		" "
SL	FILTER ()	medium (1)		" "
CN	FILTER ()	medium (1)		" "
	FILTER (.h)	medium (1)		" "
CALIPER	FILTER ()	medium (1)		" "
	FILTER (.h)	medium (1)		" "
ZDL MED RES	FILTER (hrd1*)	medium		" "
	FILTER (hrd1s*)	medium		" "
	FILTER (hrd2*)	medium		" "
	FILTER (hrd2s*)	medium		" "
	FILTER (soft*)	medium		" "
ZDL HIGH RES	FILTER (hrd1*)	light		" "

DEFICIT RES	FILTER (hrd1*)	light	"	"
	FILTER (hrd2*)	light	"	"
	FILTER (hrd2s*)	light	"	"
	FILTER (soft*)	light	"	"

BOREHOLE & CEMENT

MEASUREMENT TYPE	PARAMETER	VALUE	UNITS	INTERVAL (ft)	
CASING - BOREHOLE & CEMENT VOLUME	CASING O.D.	5.500	in	TOP	BOTTOM
	CASING THICKNESS	0.000	in	"	"
X-Y COMBINED CALIPER PROCESSING	X-Y Caliper	X-Axis		"	"
BIT SIZE	BIT SIZE	7.875	in	"	"
MUD DENSITY	MUD DENSITY	9.35	lbm/gal	"	"
BOREHOLE CORR DIAMETER SOURCE	CALIPER/FIXED DIA. (cnbh*)	USE CALIPER		"	"
	CALIPER/FIXED DIA. (slbh*)	USE CALIPER		"	"
	CALIPER/FIXED DIA. (zdbh*)	USE CALIPER		"	"
BOREHOLE CORR DIAMETER	FIXED DIAMETER (cnbh*)	7.875	in	"	"
	FIXED DIAMETER (slbh*)	7.875	in	"	"

SL PROCESSING

MEASUREMENT TYPE	PARAMETER	VALUE	UNITS	INTERVAL (ft)	
SL BOREHOLE	OPEN/CASED HOLE	OPEN HOLE		TOP	BOTTOM
	K COMPOUND WEIGHT %	0.00	pct	"	"
	K MUD COMPOUND TYPE	KCL		"	"
SL AUTOGAIN	AUTO GAIN (1329XA 1)	ON		"	"
SL SPECTRUM CALIBRATION	MODE	AUTOMATIC		"	"

CN PROCESSING

MEASUREMENT TYPE	PARAMETER	VALUE	UNITS	INTERVAL (ft)	
2446 CN MATRIX	2446 MATRIX	LIMESTONE		TOP	BOTTOM
CN SALINITY CORRECTION	SALINITY CORR (2446)	SAL & BHSIZE ON		"	"
	SALINITY	950	ppm	"	"
CN TOOL STANDOFF	ENABLE STANDOFF CORR	OFF		"	"
	STANDOFF AMOUNT	0.00	in	"	"
CN CASING & CEMENT CORRECTION	CORRECTION	OFF		"	"
	BIT SIZE BEHIND CSNG	7.875	in	"	"

ZDL PROCESSING

MEASUREMENT TYPE	PARAMETER	VALUE	UNITS	INTERVAL (ft)	
MUD DENSITY	MUD DENSITY	9.35	lbm/gal	TOP	BOTTOM
DENSITY POROSITY	RHOfmatrix	2.710	g/cm3	"	"
	RHOfluid	1.000	g/cm3	"	"
ZDL	DENX TRACKING	ON		"	"
TRACKING TIME	Logging Spd for Gain	Over 10 ft/min		"	"

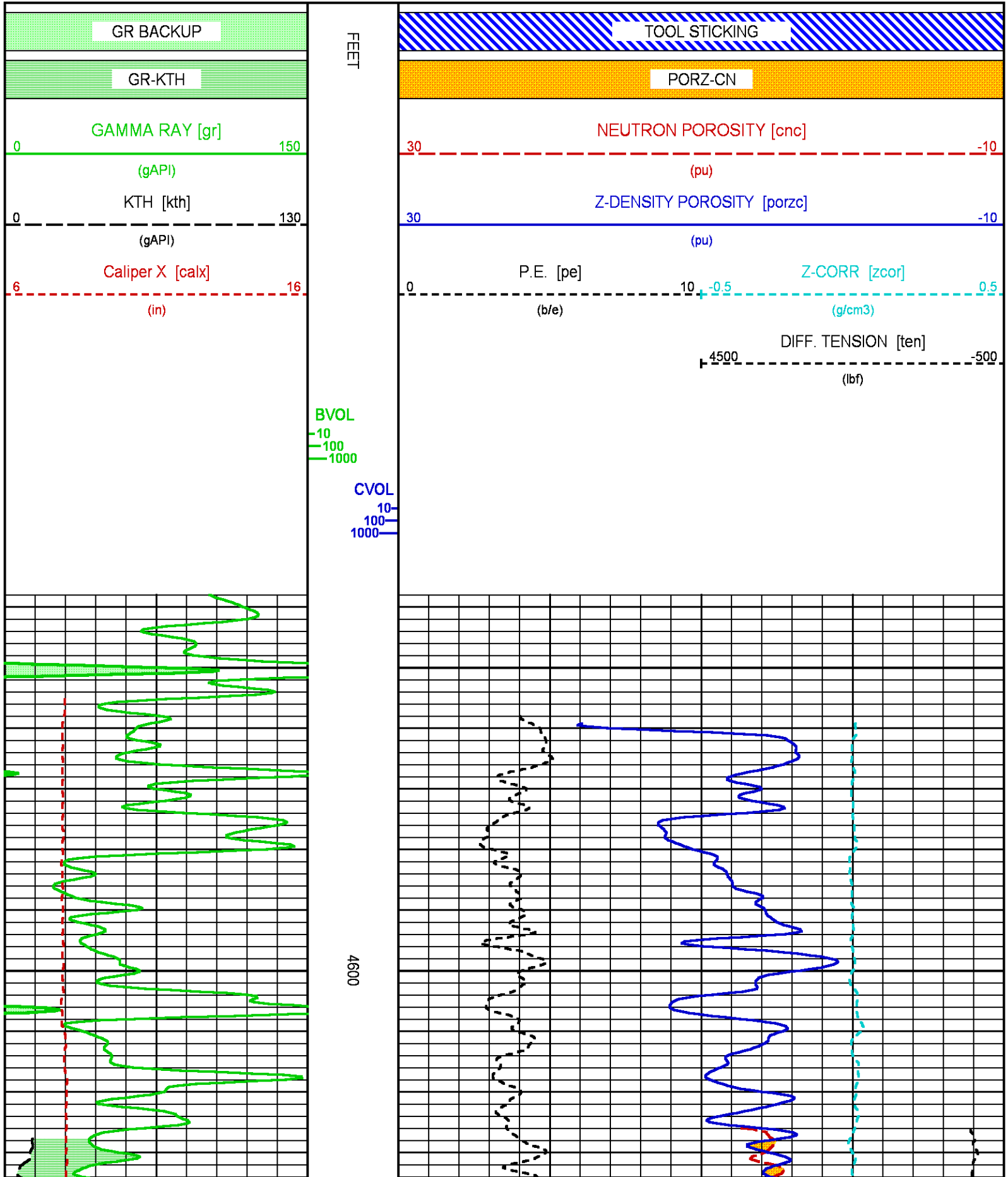
CURVE DESCRIPTION REPORT

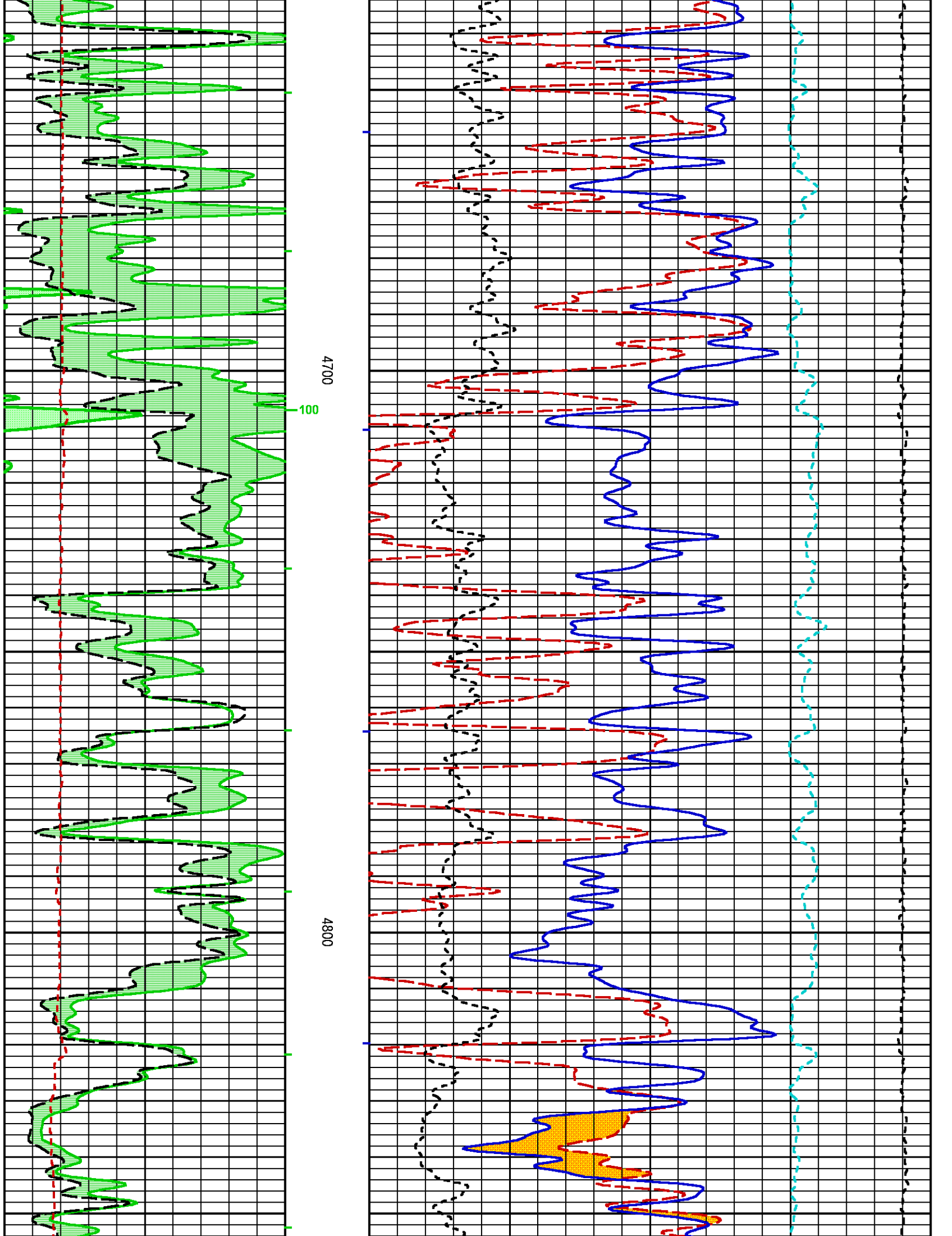
CURVE NAME	CREATION DATE	CURVE DESCRIPTION
F1:BVOL	Mar 5 21:14:15 2020	BOREHOLE VOLUME
F1:CALX	Mar 5 21:14:15 2020	CALIPER FROM X-AXIS OF XY CALIPER(S)
F1:CNC	Mar 5 21:14:15 2020	BOREHOLE SIZE CORRECTED COMPENSATED NEUTRON POROSITY
F1:CVOL	Mar 5 21:14:15 2020	CEMENT VOLUME
F1:GR	Mar 5 21:14:15 2020	GAMMA RAY
F1:KTH	Mar 5 21:14:15 2020	STRIPPED POTASSIUM-THORIUM
F1:PE	Mar 5 21:14:15 2020	PHOTO ELECTRIC CROSS-SECTION
F1:PORZC	Mar 5 21:14:15 2020	CORRECTED POROSITY
F1:TEN	Mar 5 21:14:15 2020	DIFFERENTIAL TENSION
F1:ZCOR	Mar 5 21:14:15 2020	DENSITY CORRECTION

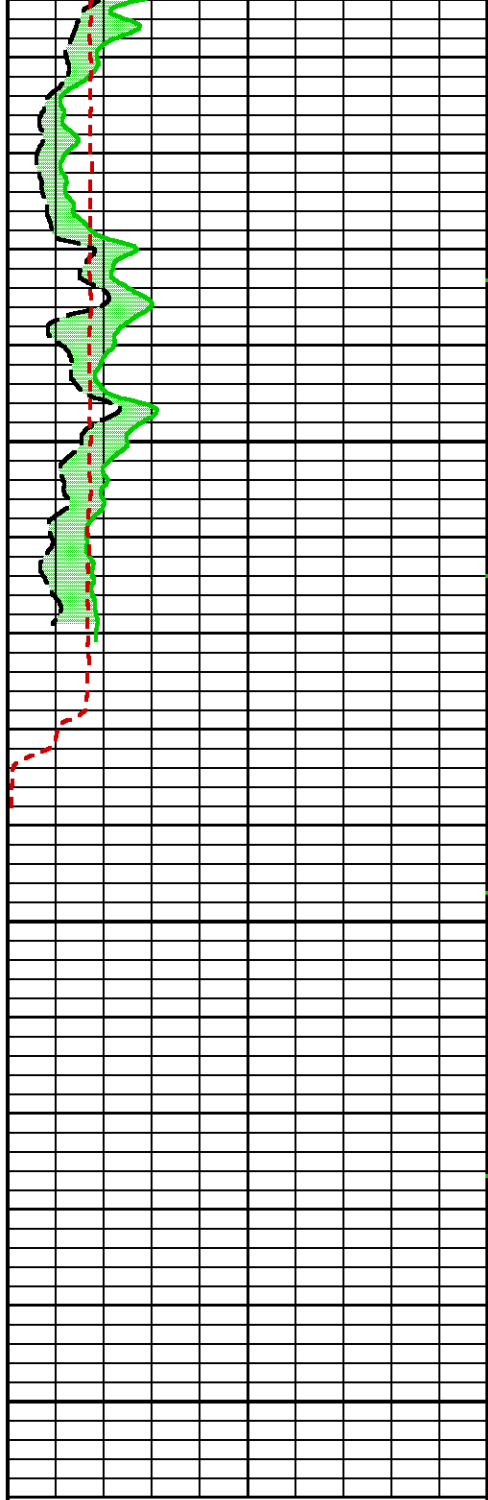
CURVE MEASURE POINT OFFSET

CURVE	OFFSET (ft)	CURVE	OFFSET (ft)	CURVE	OFFSET (ft)	CURVE	OFFSET (ft)
CALX	-71.00	GR	-88.12	PE	-70.25	TEN	0.00
CNC	-81.25	KTH	-88.12	PORZC	-70.25	ZCOR	-70.25

Data File 1 : F1 : cpu6728:/dat1a/MERIT_CARRIE_15_1/RPEAT.xtf
 Created On : Mar 5 21:14:15 2020
 Company : MERIT ENERGY COMPANY
 Well : CARRIE 15-1
 Field : WILDCAT
 File Interval : 4523.5 - 5011 Feet
 OCT : GSALM_DA







4900

5000

FEET

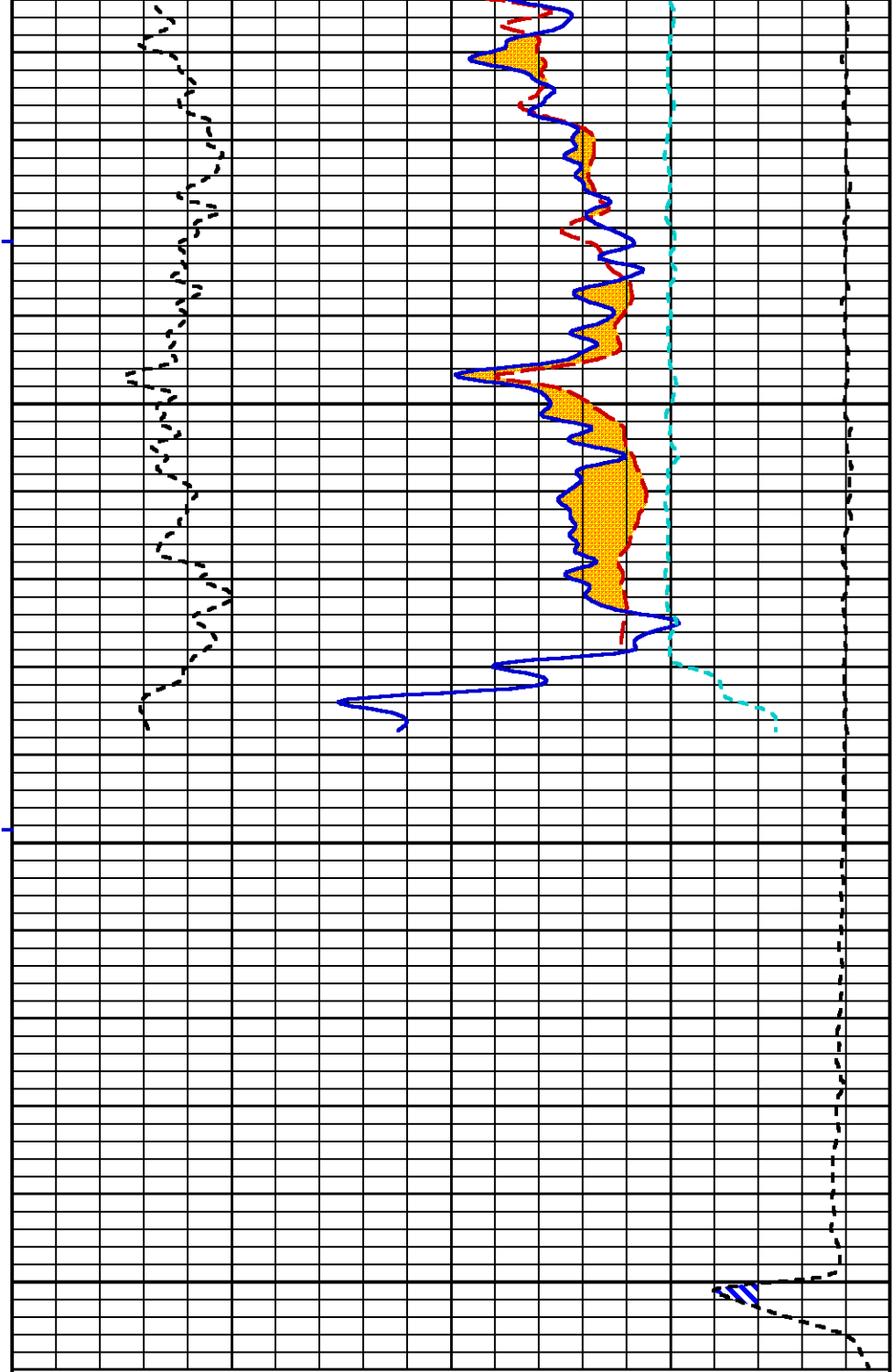
GR BACKUP

GR-KTH

GAMMA RAY [gr]
(gAPI)

KTH [kth]
(gAPI)

Caliper X [calx]
(in)



TOOL STICKING

PORZ-CN

NEUTRON POROSITY [cnc]
(pu)

Z-DENSITY POROSITY [porzc]
(pu)

P.E. [pe]
(b/e)

Z-CORR [zcor]
(g/cm3)

DIFF. TENSION [ten]
(lbf)

4500

-500

BVOL
 -10
 -100
 -1000

CVOL
 10
 100
 1000

CALIBRATION / VERIFICATION SUMMARY

Source File: /dat1a/MERIT_CARRIE_15_1/GSALM_DAL.tpt

GR PRIMARY CALIBRATION SUMMARY

TOOL # DATE/TIME PERFORMED:

UNIT # CALB JIG #

	BACKGROUND CALBRTR ON (cts/s)	CR DIFF (cts/s)	MULT	BACKGROUND CALBRTR ON (gAPI)	CALBRTR (gAPI)
GR	<input type="text" value="208.22"/>	<input type="text" value="1100.38"/>	<input type="text" value="0.168"/>	<input type="text" value="34.60"/>	<input type="text" value="184.60"/>
		<input type="text" value="894.2"/>			<input type="text" value="150"/>

GR PRIMARY VERIFICATION SUMMARY

TOOL # DATE/TIME PERFORMED:

UNIT # VERI JIG #

	BACKGROUND CALBRTR ON (cts/s)	MULT	BACKGROUND CALBRTR ON (gAPI)	DIFF. (gAPI)
GR	<input type="text" value="201.56"/>	<input type="text" value="0.168"/>	<input type="text" value="33.81"/>	<input type="text" value="184.17"/>
	<input type="text" value="1097.87"/>			<input type="text" value="150.36"/>
				<input type="text" value="140.00"/>

CN PRIMARY CALIBRATION SUMMARY

TOOL # DATE/TIME PERFORMED:

UNIT # CALIBRATOR # SOURCE #

	MEASURED CPS	DEADTM CORR CPS	DTC SSN/LSN	NOMINAL SSN/LSN	CORRECTION FACTOR	POROSITY (pu)
LSN	<input type="text" value="586.31"/>	<input type="text" value="594.68"/>				
SSN	<input type="text" value="1535.16"/>	<input type="text" value="1583.79"/>				
RATIO			<input type="text" value="2.66328"/>	<input type="text" value="2.75100"/>	<input type="text" value="1.03294"/>	
					<input type="text" value="0.97000"/>	
CN						<input type="text" value="21.358"/>

CN PRIMARY VERIFICATION SUMMARY

TOOL # DATE/TIME PERFORMED:

UNIT # ICE BLOCK #

	MEASURED CPS	DEADTM CORR CPS	DTC SSN/LSN	CORRECTION FACTOR	DTC CORR SSN/LSN	POROSITY (pu)
LSN	<input type="text" value="1984.73"/>	<input type="text" value="2084.05"/>				
SSN	<input type="text" value="4600.19"/>	<input type="text" value="5066.41"/>				
RATIO			<input type="text" value="2.43104"/>	<input type="text" value="1.03294"/>	<input type="text" value="2.51251"/>	
CN						<input type="text" value="18.027"/>

CAL PRIMARY CALIBRATION SUMMARY

TOOL #: DATE/TIME PERFORMED:

UNIT #:

	SMALL RING	LARGE RING	MULT	ADD	SMALL RING	LARGE RING
					(in)	(in)
CALIPER	<input type="text" value="2068.0"/>	<input type="text" value="2992.0"/>	<input type="text" value="0.00771"/>	<input type="text" value="-8.07143"/>	<input type="text" value="7.875"/>	<input type="text" value="15.000"/>

CAL BEFORE LOG VERIFICATION SUMMARY

TOOL #: DATE/TIME PERFORMED: DAYS SINCE CAL:

UNIT #:

	I.D.	MULT	ADD	I.D.	
					(in)
CALIPER	<input type="text" value="2114.8"/>	<input type="text" value="0.00771"/>	<input type="text" value="-8.21431"/>	<input type="text" value="8.093"/>	

CAL AFTER LOG VERIFICATION SUMMARY

TOOL #: DATE/TIME PERFORMED: DAYS SINCE CAL:

UNIT #:

	I.D.	MULT	ADD	I.D.	
					(in)
CALIPER	<input type="text" value="2157.2"/>	<input type="text" value="0.00771"/>	<input type="text" value="-8.21431"/>	<input type="text" value="8.420"/>	
				<input type="text" value="7.585"/> <input type="text" value="8.595"/>	

ZDL PRIMARY CALIBRATION SUMMARY

TOOL: DATE/TIME PERFORMED:

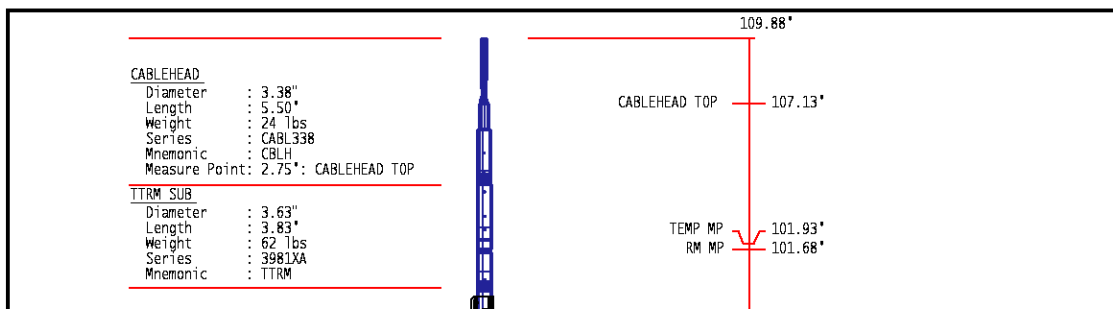
UNIT: CALB BLKS: CS SRC:

	SS CS PK (Channel)	LS CS PK (Channel)	SS_BKGD (cps)	LS BKGD (cps)
	<input type="text" value="224.2"/>	<input type="text" value="224.5"/>	<input type="text" value="1294.9"/>	<input type="text" value="1510.6"/>
	<input type="text" value="220.0"/> <input type="text" value="230.0"/>	<input type="text" value="220.0"/> <input type="text" value="230.0"/>		

	SS (cps)	LS (cps)	SHR	DEN (g/cm3)	CORR (g/cm3)	PE (b/e)
MG (LO PE)	<input type="text" value="18889.8"/>	<input type="text" value="9785.2"/>	<input type="text" value="0.631"/>	<input type="text" value="1.700"/>	<input type="text" value="0.003"/>	<input type="text" value="2.160"/>
			<input type="text" value="0.585"/> <input type="text" value="0.695"/>			
AL	<input type="text" value="10799.8"/>	<input type="text" value="960.6"/>		<input type="text" value="2.698"/>	<input type="text" value="-0.010"/>	
AL + SHIM	<input type="text" value="15007.4"/>	<input type="text" value="1706.4"/>		<input type="text" value="2.619"/>	<input type="text" value="0.158"/>	
MG + SHIM (HI PE)	<input type="text" value="8996.2"/>	<input type="text" value="4501.1"/>	<input type="text" value="0.245"/>			<input type="text" value="8.500"/>
			<input type="text" value="0.210"/> <input type="text" value="0.270"/>			
RATIO AL + SHIM/AL	<input type="text" value="1.39"/>	<input type="text" value="1.78"/>				
	<input type="text" value="1.32"/> <input type="text" value="1.42"/>	<input type="text" value="1.64"/> <input type="text" value="1.84"/>				
RATIO MG/AL	<input type="text" value="1.75"/>	<input type="text" value="10.19"/>				
	<input type="text" value="1.85"/> <input type="text" value="1.78"/>	<input type="text" value="9.40"/> <input type="text" value="10.20"/>				

INSTRUMENT CONFIGURATION

Source File: /dat1a/MERIT_CARRE_15_1/GSALM_DAL-tdg



WTS COMMON REMOTE

Diameter : 3.63"
Length : 6.36"
Weight : 128 lbs
Series : 3514XC
Mnemonic : WTS

DIGITAL SPECTRALOG

Diameter : 3.63"
Length : 7.31"
Weight : 130 lbs
Series : 1329XA
Mnemonic : DSL
Measure Point: 1.60": GR MP

COMPENSATED NEUTRON

Diameter : 3.63"
Length : 7.59"
Weight : 150 lbs
Series : 2446XA
Mnemonic : CN
Measure Point: 2.63": LSN MP
Measure Point: 2.24": SSN MP

Z-DENSILOG

Diameter : 4.88"
Length : 11.22"
Weight : 360 lbs
Series : 2234XA
Mnemonic : ZDL
Measure Point: 3.19": CAL MP
Measure Point: 2.47": LSD MP
Measure Point: 2.07": SSD MP

KNUCKLE JOINT (DOUBLE)

Diameter : 3.38"
Length : 4.65"
Weight : 90 lbs
Series : 3939XA
Mnemonic : KNJT

ARRAY ACOUSTILOG ELECTRONICS, 8 CHANNEL

Diameter : 3.38"
Length : 7.82"
Weight : 102 lbs
Series : 1677EA
Mnemonic : XMAC

DIGITAL ACOUSTILOG

Diameter : 3.38"
Length : 12.76"
Weight : 145 lbs
Series : 1680MA
Mnemonic : DAL
Measure Point: 7.95": T1 MP
Measure Point: 5.95": T2 MP
Measure Point: 2.95": R1 MP

4 ARM BOW SPRING CENTRALIZER

Diameter : 3.38"
Length : 4.12"
Weight : 72 lbs
Series : 4341XA
Mnemonic : CENT

HIGH DEFINITION INDUCTION TOOL

Diameter : 3.62"
Length : 27.13"
Weight : 415 lbs
Series : 1515XA
Mnemonic : HDIL
Measure Point: 13.91": SP MP
Measure Point: 7.44": XMTR MP



GR MP 88.48'

LSN MP 81.92'
SSN MP 81.52'

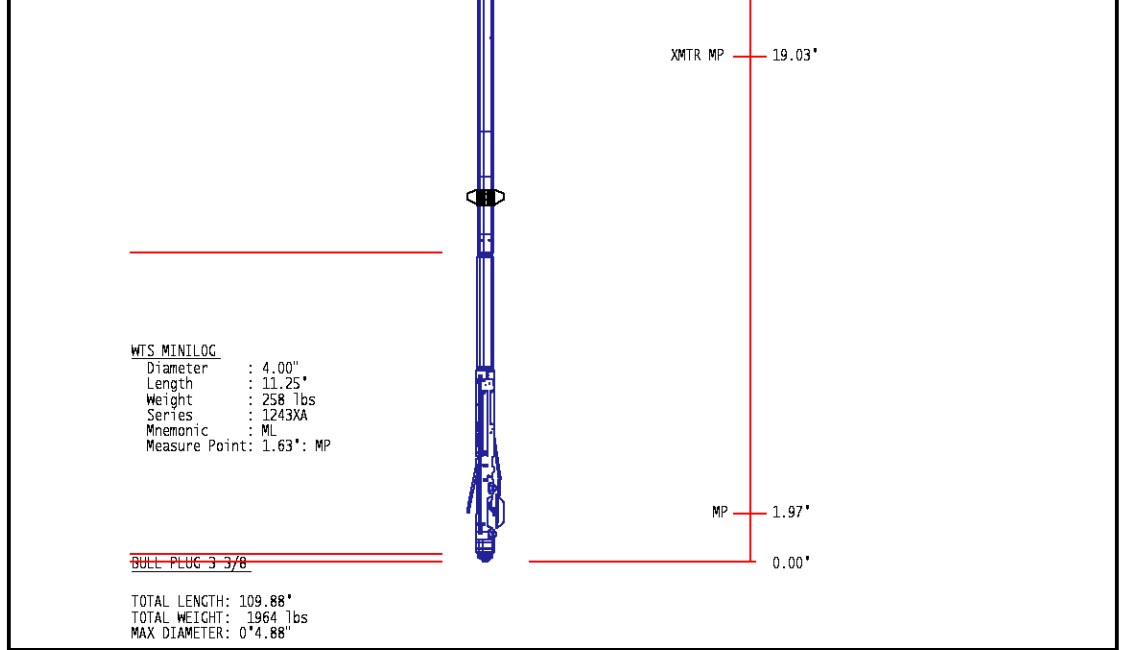
CAL MP 71.26'
LSD MP 70.54'
SSD MP 70.14'

T1 MP 50.79'

T2 MP 48.79'

R1 MP 45.79'

SP MP 25.50'



COMPANY <u>MERIT ENERGY COMPANY</u> WELL <u>CARRIE 15-1</u> FIELD <u>WILDCAT</u> COUNTY <u>FINNEY</u> STATE <u>OKLAHOMA</u>	FILE NO: <hr/>
	API NO: <u>15-093-21978-00-00</u>
LOCATION: <u>1632 FEL & 2315 FNL</u> SEC <u>15</u> TWP <u>23S</u> RGE <u>35W</u>	ELEVATIONS: KB 3033 FT DF 3032 FT GL 3021 FT DATE <u>05-Mar-2020</u>