



MIDWEST SURVEYS
 LOGGING - PERFORATING - CONSULTING SERVICES
 P.O. Box 68, Osawatomie, KS 68064
 913.735.2128

GAMMA RAY / NEUTRON / CCL

File No.

Company **ACE Energy, LLC.**

Well **DR Nelson NO. M-11**

Field **Elsmore West**

County **Allen** State **Kansas**

Location **31301 FSL & 2505' FEL**

Other Services
Perforate

Sec. 18 Twp. 26S Rge. 21E Elevation 1045'

Permanent Datum **GL** KB NA
 Log Measured From **GL** D.F. NA
 Drilling Measured From **GL** G.L. 1045'

Date **04-18-2018**

Run Number **One**

Depth Driller **885.0**

Bottom Logged Interval **873.0**

Top Log Interval **20.0**

Fluid Level **Full**

Type Fluid **Water**

Density / Viscosity **NA**

Salinity - PPM Cl **NA**

Max Recorded Temp **NA**

Estimated Cement Top **0.0**

Equipment No. **104** Location **Osawatomie**

Recorded By **Gary Windisch**

Witnessed By **Cassy Jessop**

BORE-HOLE RECORD				CASING RECORD			
RUN	NO.	BIT	TO	SIZE	WGT.	FROM	TO
One	12.00"	0.0	21.4	8.825"	24.0	0.0	21.4
Two	6.75"	21.4	883.0	4.50"	10.5	0.0	873.0

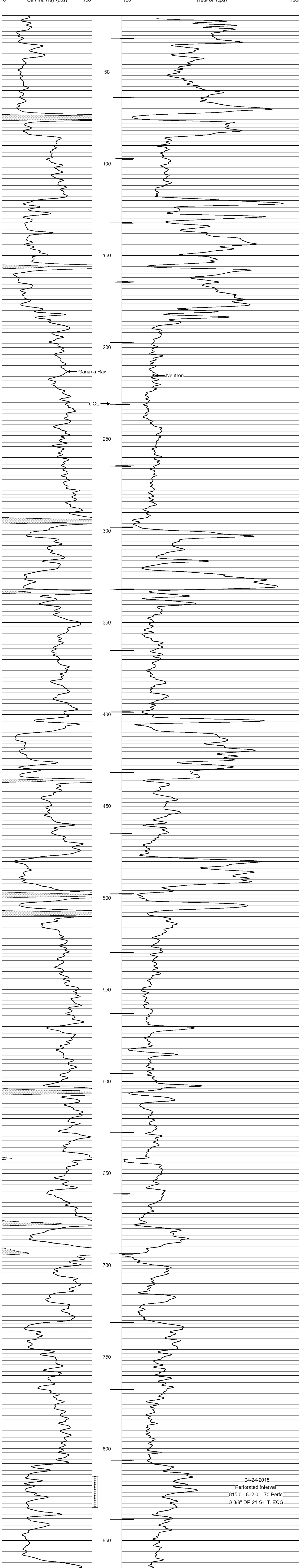
<<< Fold Here >>>

All interpretations are opinions based on inferences from electrical or other measurements and we cannot and do not guarantee the accuracy or correctness of any interpretation, and we shall not, except in the case of gross or willful negligence on our part, be liable or responsible for any loss, costs, damages, or expenses incurred or sustained by anyone resulting from any interpretation made by any of our officers, agents or employees. These interpretations are also subject to our general terms and conditions set out in our current Price Schedule.

Comments

Drilling Contractor :
 David Wrestler

Database File: dr nelson 11m.db
 Dataset Pathname: pass1
 Presentation Format: gr-n-ccl
 Dataset Creation: Wed Apr 18 10:12:55 2018 by Log SCH 111116
 Charted by: Depth in Feet scaled 1:240



04-24-2018
 Perforated Interval
 815.0 - 832.0 70 Perfs
 3 3/8" DP 21 Gr. T. ECG