



MIDWEST SURVEYS
 LOGGING - PERFORATING - CONSULTING SERVICES
 P.O. Box 68, Osawatomie, KS 68064
 913.735.2128

GAMMA RAY / NEUTRON / CCL

File No.

Company ACE Energy, LLC.
 Well DR Nelson NO. Q-7
 Field Eismore West

County Allen State Kansas

Location 4000' F.S.L. & 1705' FEL
 SW-SE-NW-NE

Sec. 18 Twp. 26S Rge. 21E
 Permanent Datum GL Elevation 1050'
 Log Measured From GL
 Drilling Measured From GL

Date 04-24-2018
 Run Number One
 Depth Driller 888.0
 Bottom Logged Interval 872.2
 Top Log Interval 20.0
 Fluid Level Full

Other Services Perforate

Type Fluid		BORE-HOLE RECORD		CASING RECORD	
Density / Viscosity	Water	No.	TO	SIZE	WGT.
Salinity - PPM Cl	NA	FROM	FROM	FROM	FROM
Max Recorded Temp	NA	One	12.00"	21.4	8.825"
Estimated Cement Top	NA	Two	6.75"	21.4	8.83.0
Equipment No.	104				
Location	Osawatomie				
Recorded By	Garv Windisch				
Witnessed By	Casey Jessop				

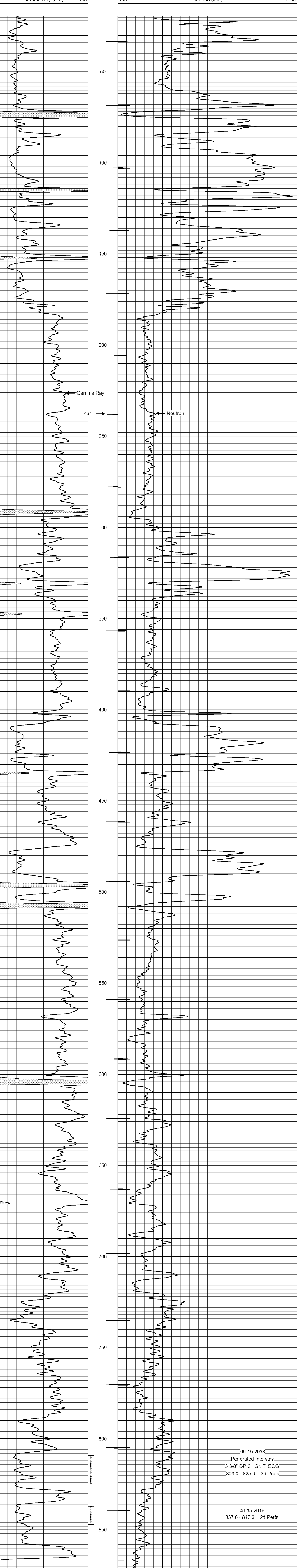
<<< Fold Here >>>

All interpretations are opinions based on inferences from electrical or other measurements and we cannot and do not guarantee the accuracy or correctness of any interpretation, and we shall not, except in the case of gross or willful negligence on our part, be liable or responsible for any loss, costs, damages, or expenses incurred or sustained by anyone resulting from any interpretation made by any of our officers, agents or employees. These interpretations are also subject to our general terms and conditions set out in our current Price Schedule.

Comments

Drilling Contractor :
 David Wrestler

Database File: dr nelson 7q.db
 Dataset Pathname: pass1
 Presentation Format: gr-n-ccl
 Dataset Creation: Tue Apr 24 12:31:24 2018 by Log SCH 111116
 Charted by: Depth in Feet scaled 1:240



06-15-2018
 Perforated Intervals
 3 3/8" DP 21 Gr. T. ECG
 809.0 - 825.0 34 Perfs.

06-15-2018
 837.0 - 847.0 21 Perfs.