



MIDWEST SURVEYS
LOGGING - PERFORATING - CONSULTING SERVICES
P.O. Box 68, Ossawatimie, KS 66064
913 / 755 - 2128

GAMMA RAY / NEUTRON / CCL

File No.

Company **ACE Energy, LLC.**

Well **DR Nelson No. O-7**

Field **Elsmore West**

County **Allen** State **Kansas**

Location

4000' FSL & 2145' FEL

SE-SW-NW-NE

Sec. 18 Twp. 26S Rge. 21E

Permian Daum GL

Log Measured From GL

Drilling Measured From GL

Date 05-29-2018

Run Number One

Depth Culler 857.0

Depth Logger 796.4

Bottom Logged Interval 795.4

Top Log Interval 20.0

Fluid Level Full

Type Fluid Water

Density / Viscosity NA

Salinity - PPM Cl NA

Max Recorded Temp NA

Estimated Cement Top 0.0

Equipment No. 104

Location Ossawatimie

Recorded By Gary Windisch

Witnessed By Casey Jessepch

BORE-HOLE RECORD

BIT FROM TO SIZE WGT. FROM TO

One 12.00" 0.0 21.4 8.625" 24.0 0.0 21.4

Two 6.75" 21.4 857.0 2.875" 6.5 0.0 796.0

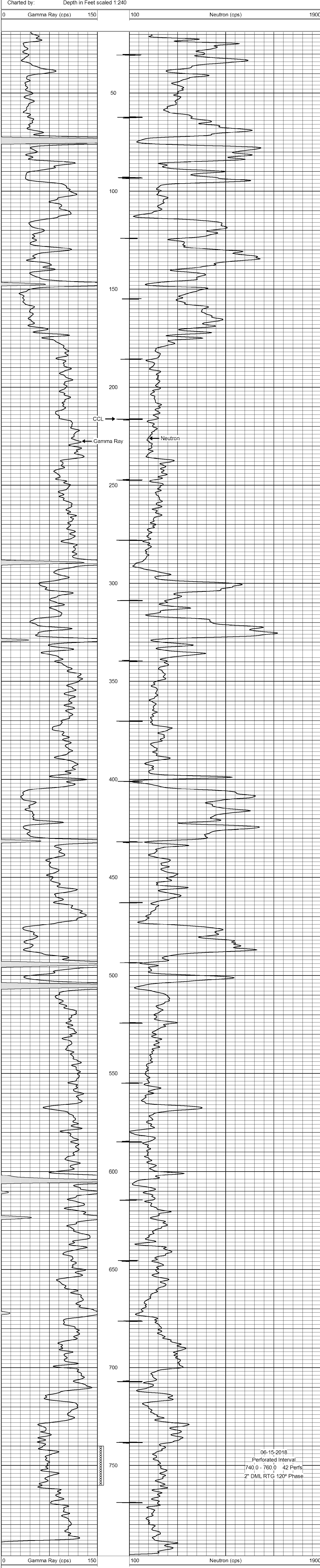
<<< Fold Here >>>

All interpretations are opinions based on inferences from electrical or other measurements and we cannot and do not guarantee the accuracy or correctness of any interpretation, and we shall not, except in the case of gross or willful negligence on our part, be liable or responsible for any loss, costs, damages, or expenses incurred or sustained by anyone resulting from any interpretation made by any of our officers, agents or employees. These interpretations are also subject to our general terms and conditions set out in our current Price Schedule.

Comments

Drilling Contractor :
David Wrestler

Database File: dr nelson 7o.db
Dataset Pathname: pass1
Presentation Format: gr-n-ccl
Dataset Creation: Tue May 29 08:50:51 2018 by Log SCH 111116
Charted by: Depth in Feet scaled 1:240



06-15-2018
Perforated Interval
740.0 - 760.0 42 Perfs
2" DML RTG 120° Phase