

MICRO LOG

Company MTM PETROLEUM, INC.
 Well HUFFORD #2-23
 Field SPIVEY-GRABS-BASIL
 County KINGMAN
 State KANSAS

Company MTM PETROLEUM, INC.
 Well HUFFORD #2-23
 Field SPIVEY-GRABS-BASIL
 County KINGMAN State KANSAS

Location: API # : 15-095-22317-00-00
 1400' FSL & 770' FEL
 SEC 23 TWP 30S RGE 7W
 Permanent Datum GROUND LEVEL Elevation 1503'
 Log Measured From KELLY BUSHING 8' A.G.L.
 Drilling Measured From KELLY BUSHING
 Other Services CDL/CNL/DIL
 Elevation K.B. 1511'
 D.F. 1509
 G.L. 1503

| | |
|------------------------------|------------------|
| Date | 12/10/17 |
| Run Number | TWO |
| Depth Driller | 4325 |
| Depth Logger | 4330 |
| Bottom Logged Interval | 4328 |
| Top Log Interval | 3000 |
| Casing Driller | 8 5/8" @ 221 |
| Casing Logger | 221 |
| Bit Size | 7 7/8" |
| Type Fluid in Hole | CHEMICAL MUD |
| Density / Viscosity | 9.3/55 |
| pH / Fluid Loss | 10.0/10.4 |
| Source of Sample | FLOWLINE |
| Rm @ Meas. Temp | .80@48 |
| Rmt @ Meas. Temp | .60@48 |
| Rmc @ Meas. Temp | .96@48 |
| Source of Rmf / Rmc | MEASURED |
| Rm @ BHT | .32@119 |
| Time Circulation Stopped | 2 HOURS |
| Time Logger on Bottom | /// |
| Maximum Recorded Temperature | 119F |
| Equipment Number | 4010 |
| Location | HAYS, KANSAS |
| Recorded By | GUS PFANENSTIEL |
| Witnessed By | JERRY A. SMITH |
| | MARVIN A. MILLER |

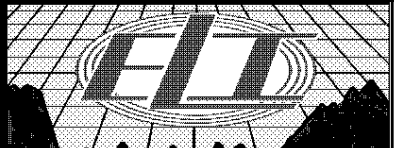
<<< Fold Here >>>

All interpretations are opinions based on inferences from electrical or other measurements and we cannot and do not guarantee the accuracy or correctness of any interpretation, and we shall not, except in the case of gross or willful negligence on our part, be liable or responsible for any loss, costs, damages, or expenses incurred or sustained by anyone resulting from any interpretation made by any of our officers, agents or employees. These interpretations are also subject to our general terms and conditions set out in our current Price Schedule.

Comments

THANK YOU FOR USING ELI WIRELINE, HAYS, KS. (785) 628-6395

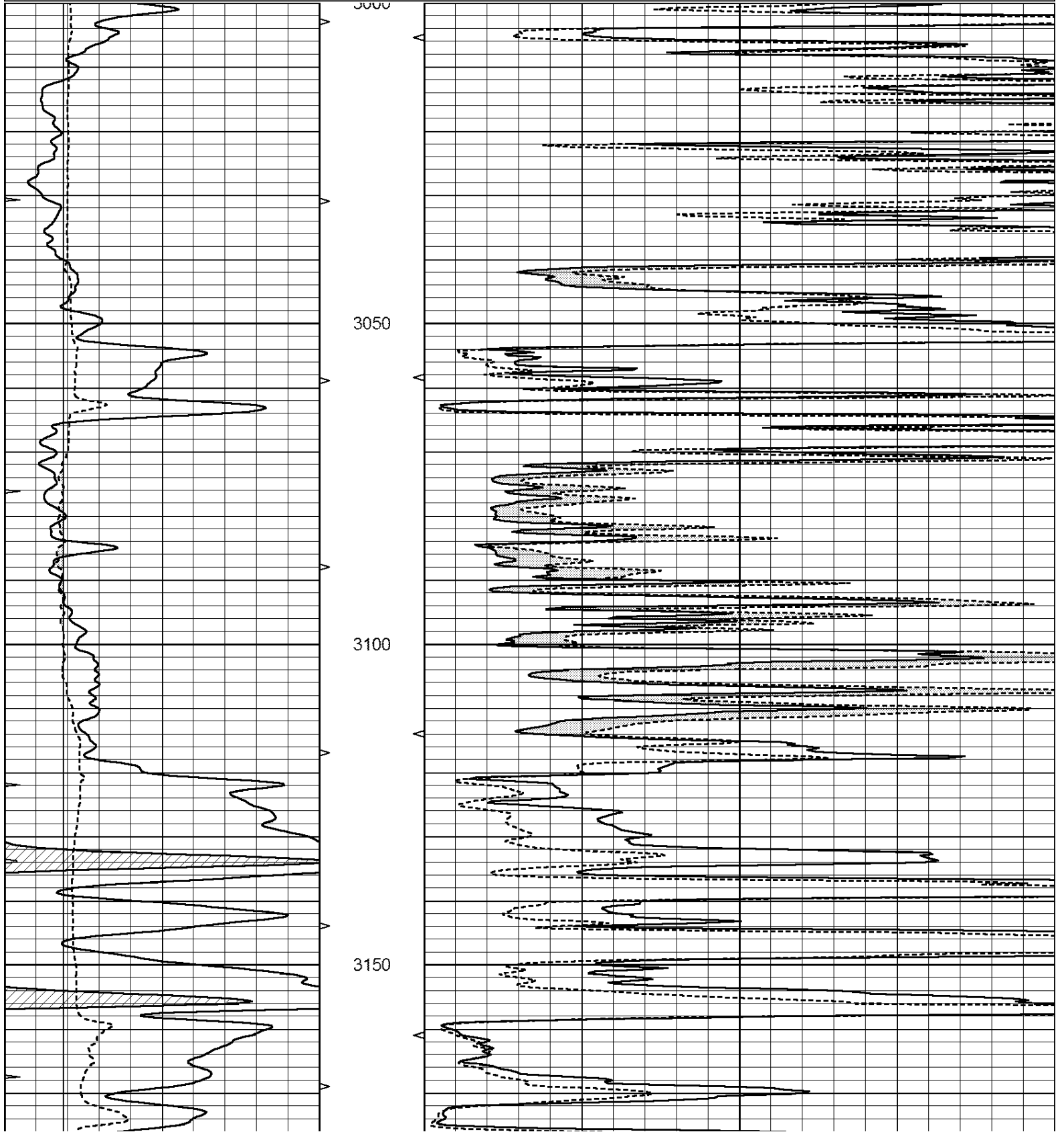
DIRECTIONS
 RAGO SOUTH 2 MILES, EAST 2 MILES,
 SOUTH INTO.

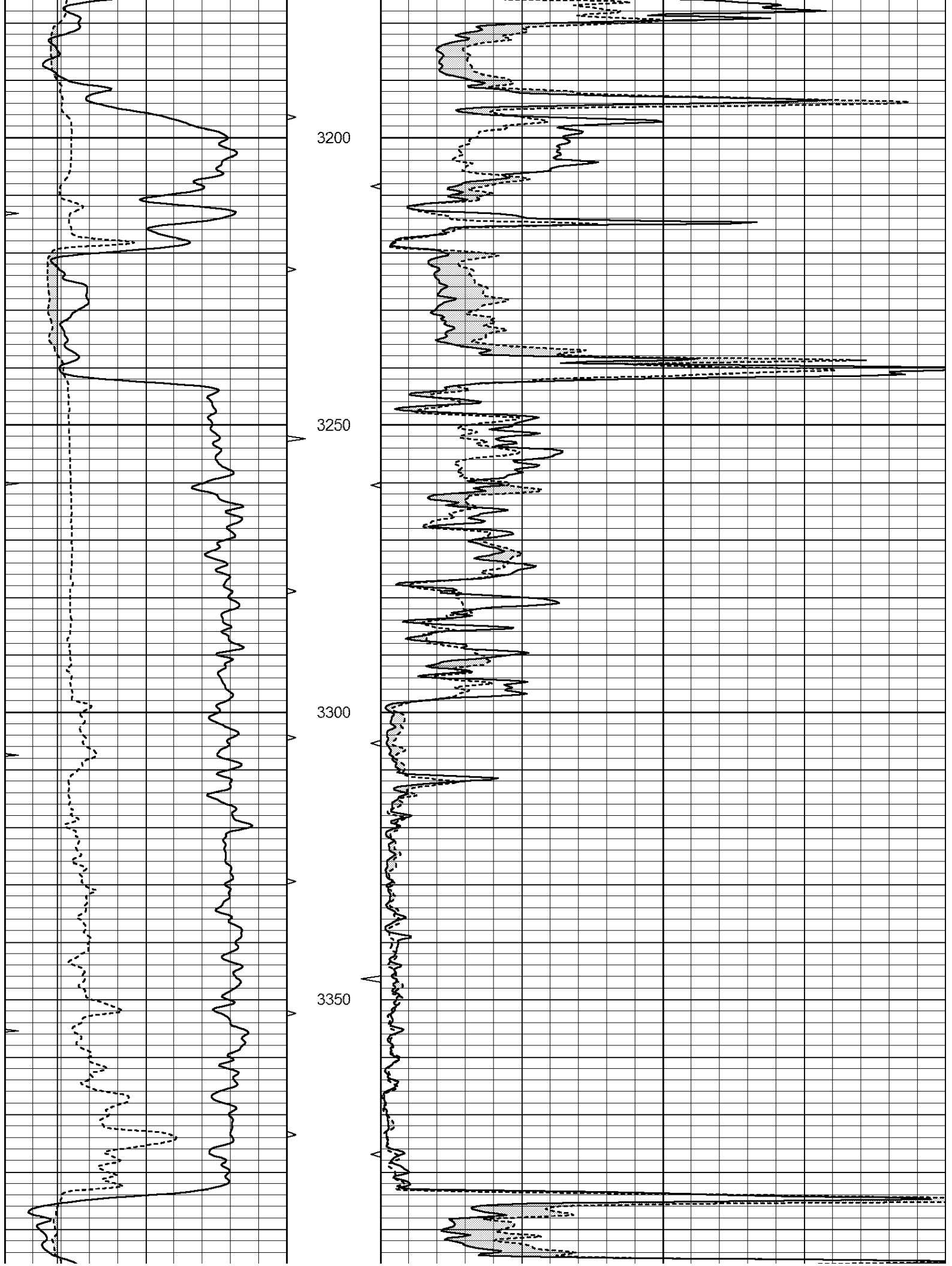


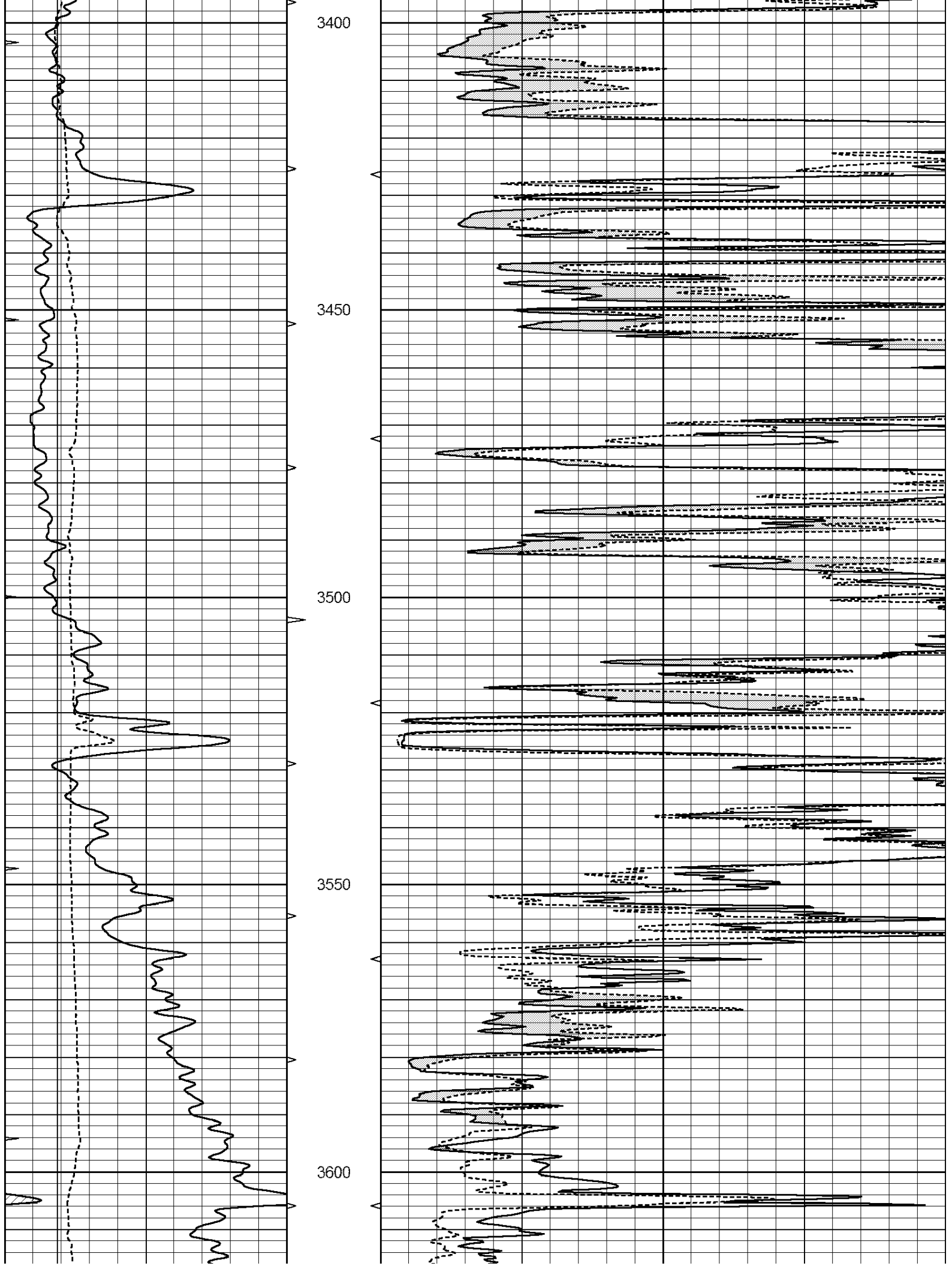
MAIN PASS

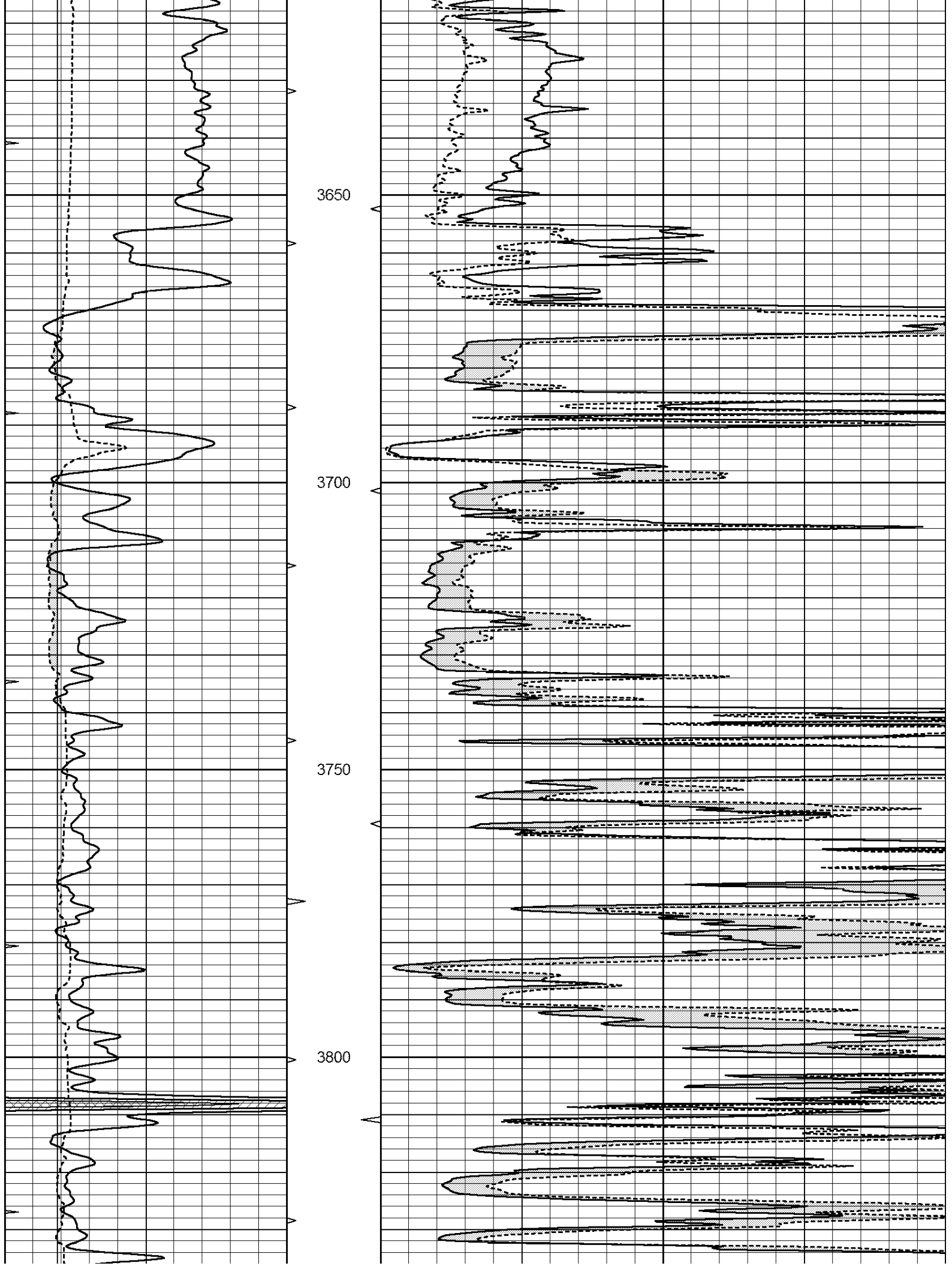
Database File: 2116ddn.db
 Dataset Pathname: pass5.1
 Presentation Format: _micro
 Dataset Creation: Sun Dec 10 09:07:41 2017 by Calc Open-Cased 090629
 Charted by: Depth in Feet scaled 1:240

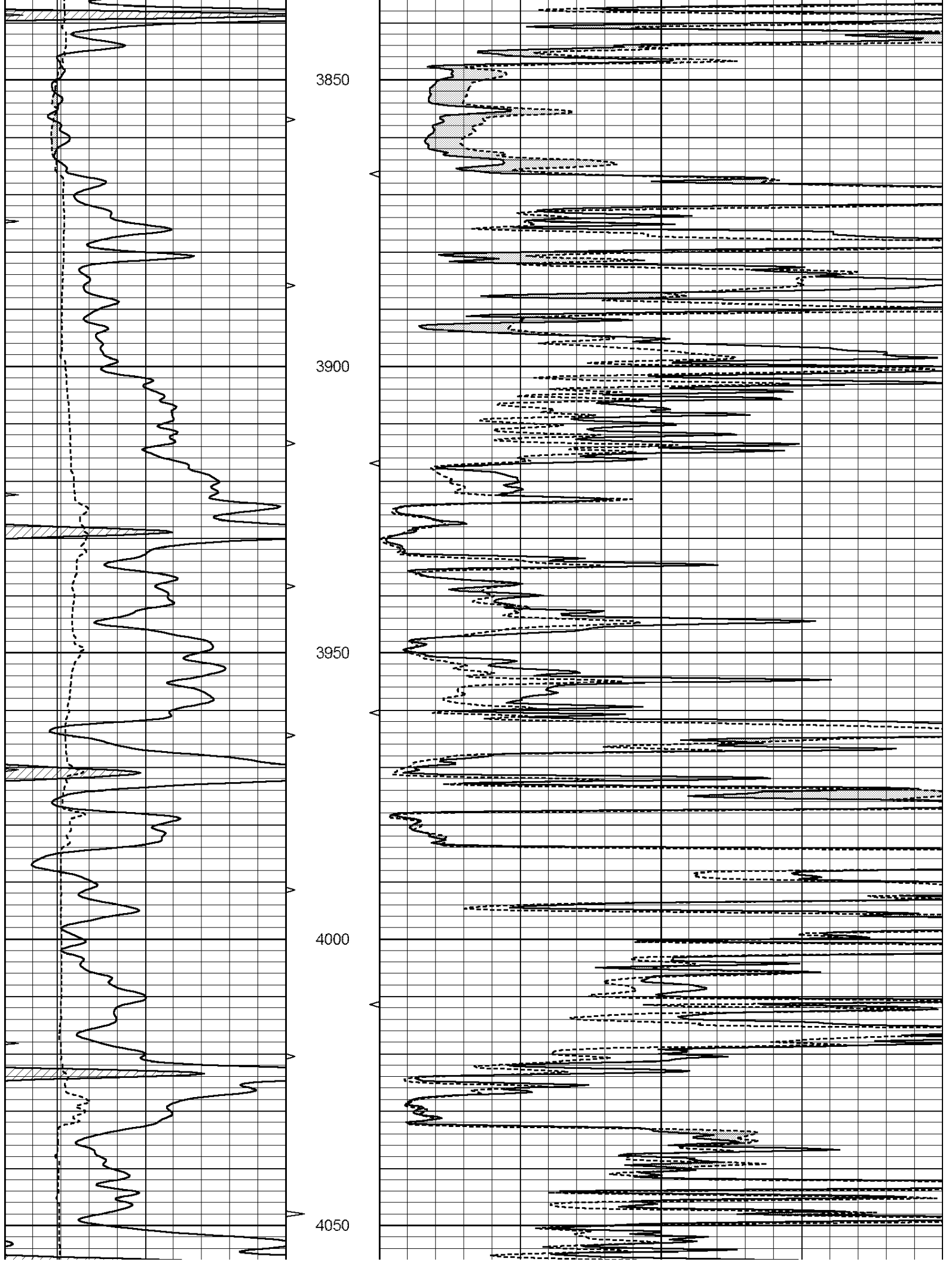
| | | | | | | |
|---|------------------|-----|----------|----|----------------|----|
| 0 | GAMMA RAY (GAPI) | 150 | ABHV | 0 | MEL1.5 (Ohm-m) | 40 |
| 6 | CALIPER (in) | 16 | 10 (ft3) | 0 | MEL2.0 (Ohm-m) | 40 |
| 0 | MINMK | 20 | TBHV | | | |
| | | | 0 (ft3) | 10 | | |

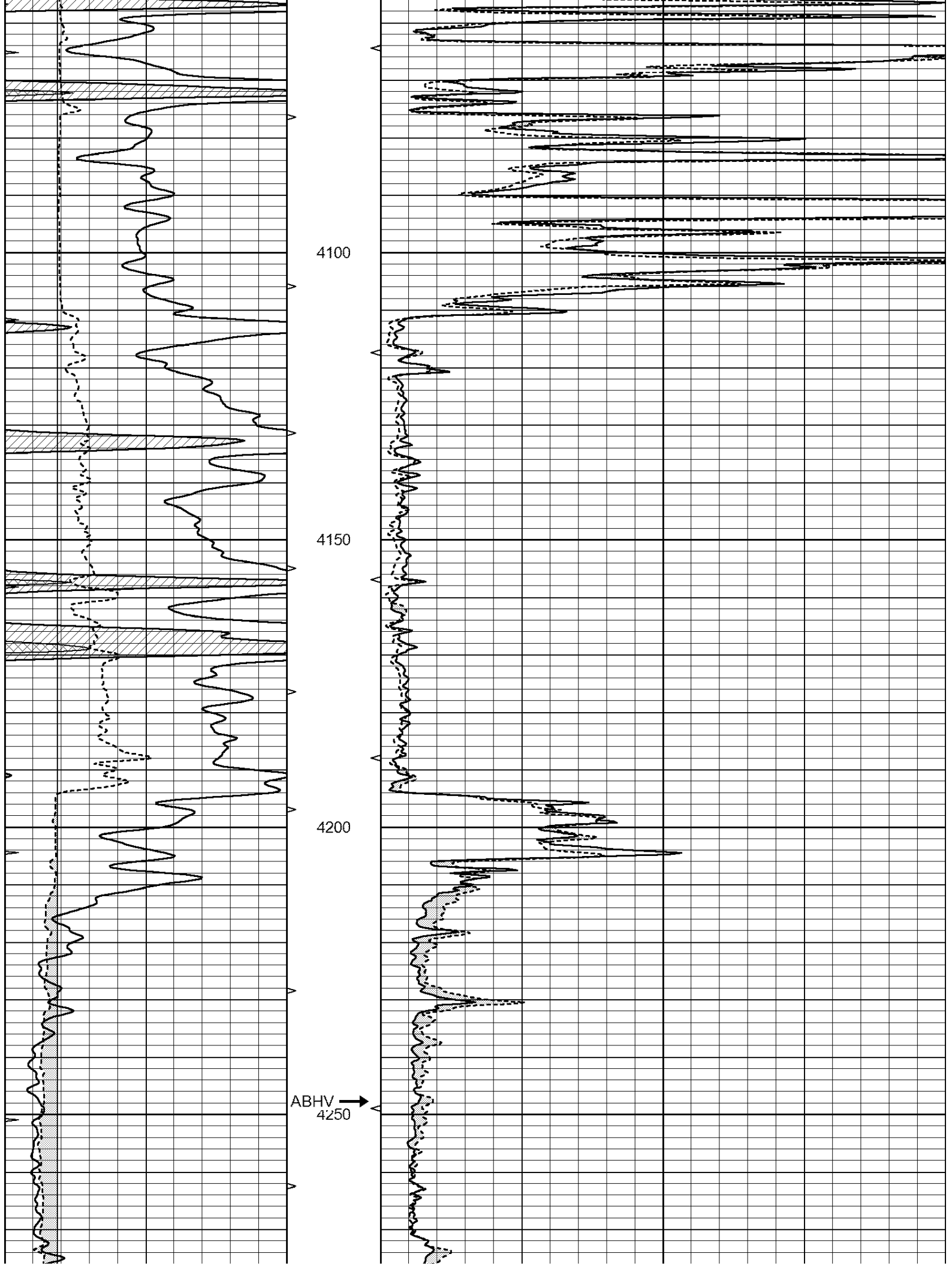


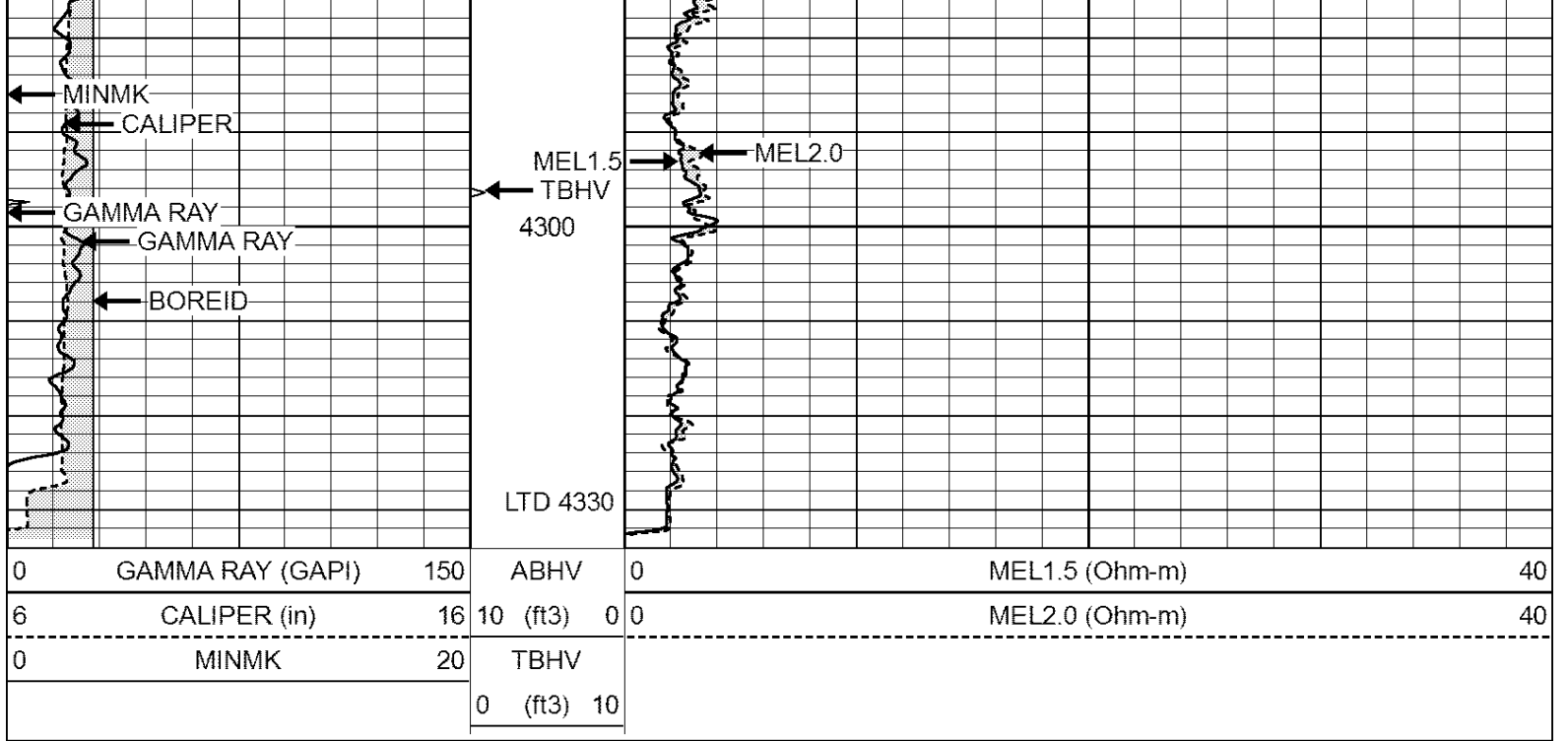








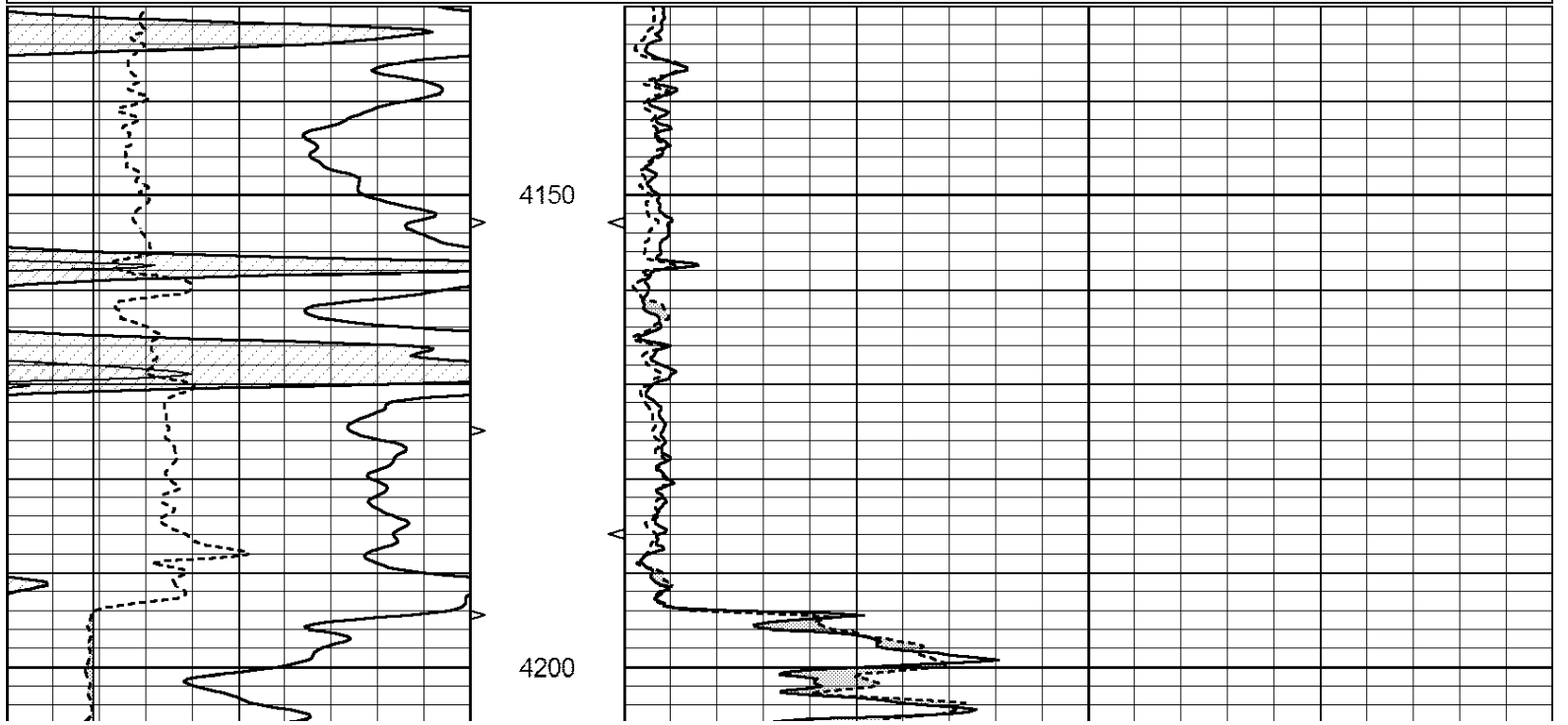


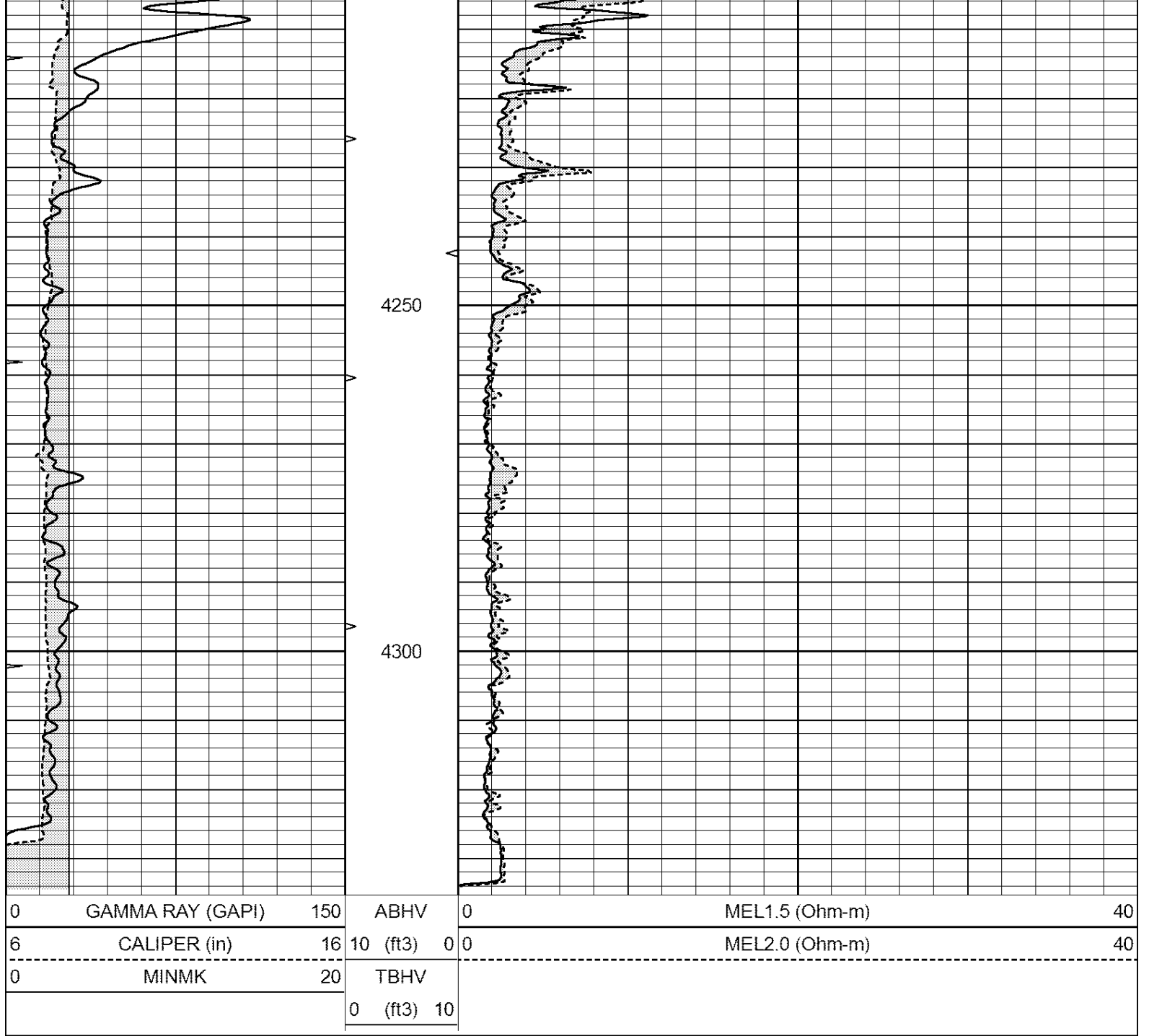


REPEAT SECTION

Database File: 2116ddn.db
 Dataset Pathname: pass4.1
 Presentation Format: _micro
 Dataset Creation: Sun Dec 10 09:12:04 2017 by Calc Open-Cased 090629
 Charted by: Depth in Feet scaled 1:240

| | | | | | | |
|---|------------------|-----|----------|----|----------------|----|
| 0 | GAMMA RAY (GAPI) | 150 | ABHV | 0 | MEL1.5 (Ohm-m) | 40 |
| 6 | CALIPER (in) | 16 | 10 (ft3) | 0 | MEL2.0 (Ohm-m) | 40 |
| 0 | MINMK | 20 | TBHV | | | |
| | | | 0 (ft3) | 10 | | |





Calibration Report

Database File: 2116ddn.db
 Dataset Pathname: pass4.1
 Dataset Creation: Sun Dec 10 09:12:04 2017 by Calc Open-Cased 090629

MICRO Calibration Report

Serial Number: MICRO6
 Tool Model: PROBE
 Performed: Wed Aug 16 17:13:39 2017

Caliper Calibration: Gain=3.960 Offset=4.551

| | | |
|------------|---------|----------|
| References | Low Cal | High Cal |
| Readings | 7.000 | 14.000 |
| | 0.555 | 2.323 |

1.5" Calibration: Gain=35.075 Offset=-0.400

| | |
|---------|----------|
| Low Cal | High Cal |
|---------|----------|

| | | |
|------------|-------|--------|
| References | 0.000 | 20.000 |
| Readings | 0.004 | 1.196 |

| | | |
|-----------------|-------------|---------------|
| 2" Calibration: | Gain=50.000 | Offset=-1.250 |
| | Low Cal | High Cal |
| References | 0.000 | 20.000 |
| Readings | 0.006 | 0.913 |

Gamma Ray Calibration Report

| | | |
|---------------------|--------------------------|----------|
| Serial Number: | GR2 | |
| Tool Model: | OPEN | |
| Performed: | Wed Aug 16 17:13:40 2017 | |
| Calibrator Value: | 1.0 | GAPI |
| Background Reading: | 0.0 | cps |
| Calibrator Reading: | 1.0 | cps |
| Sensitivity: | 0.3800 | GAPI/cps |