



MIDWEST SURVEYS
 LOGGING - PERFORATING - CONSULTING SERVICES
 P.O. Box 88, Osawatomie, KS 66064
 913.755.2128

GAMMA RAY / NEUTRON / CCL

File No. Company **Colt Energy, Inc.**

Well **Cobble No - 32**

Field **Big Sandy**

County **Woodson** State **Kansas**

Location **495 FNL & 2075 FEL**

Other Services **Perforate**

Sec. 27 Twp. 26S Rge. 14E
 Permit/Datum G.L. Elevation 976
 Log Measured From G.L. K.B. NA
 Drilling Measured From G.L. O.L. 978

Date 09-12-2017
 Run Number One
 Depth Drier 1475.0

Depth Logger 1448.8
 Bottom Logged Interval 1447.8
 Top Log Interval 20.0

Fluid Level Full

Type Fluid Water

Density / Viscosity NA
 Salinity - PPM Cl NA
 Max Recorded Temp NA

Estimated Cement Top 0.0
 Equipment No. T04
 Location Osawatomie

Recorded By Gary Winkler
 Witnessed By John Anemian

BOREHOLE RECORD
 RIN NO. BIT FROM TO
 One 12.25' 40.0 40.0
 Two 6.75' 40.0 46.75

CASING RECORD
 SIZE WEST FROM TO
 4.50" 10.5 0.0
 8.625" 14.5 0.0
 14.50" 14.5 14.5

TO 40.0
 14.5754
 14.5354

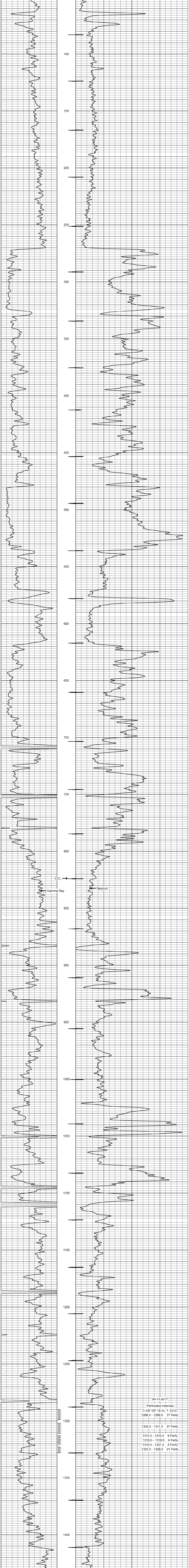
<<< Fold Here >>>

All interpretations are opinions based on inferences from electrical or other measurements and we cannot and do not guarantee the accuracy or correctness of any interpretation, and we shall not, except in the case of gross or willful negligence on our part, be liable or responsible for any loss, costs, damages, or expenses incurred or sustained by anyone resulting from any interpretation made by any of our officers, agents or employees. These interpretations are also subject to our general terms and conditions set out in our current Price Schedule.

Comments

Drilling Contractor :
 Bar Drilling, LLC.

Database File: cobble 32.cb
 Presentation Pathname: pass1
 Dataset Format: gr-n-ccl
 Dataset Creation: Tue Sep 12 12:43:53 2017 by Log SCH 111116
 Charted by: Depth in Feet scaled 1:240



09-13-2017