

MICRO LOG

Company RAYMOND OIL COMPANY, INC.  
 Well #1 HAACK - SOWERS UNIT  
 Field WILDCAT  
 County CHEYENNE State KANSAS

Location: API #: 15-023-21464-0000  
 2299' FNL & 2633' FEL  
 NW - SW - SW - NE  
 SEC 20 TWP 4S RGE 30W  
 Permanent Datum GROUND LEVEL Elevation 3441  
 Log Measured From KELLY BUSHING 5' A.G.L.  
 Drilling Measured From KELLY BUSHING  
 Other Services CDL/CNL DIL  
 Elevation K.B. 3446 D.F. 3444 G.L. 3441

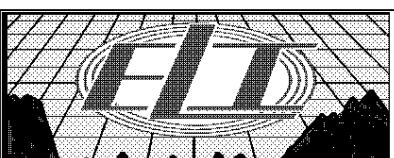
Date	5/15/17
Run Number	TWO
Depth Driller	5115
Depth Logger	5114
Bottom Logged Interval	5112
Top Log Interval	3700
Casing Driller	8 5/8" @ 380'
Casing Logger	380
Bit Size	7 7/8"
Type Fluid in Hole	CHEMICAL MUD
Density / Viscosity	9.2/63
pH / Fluid Loss	10.5/8.0
Source of Sample	FLOWLINE
Rin @ Meas. Temp	.950 @ 100F
Rmf @ Meas. Temp	.713 @ 100F
Rmc @ Meas. Temp	1.14 @ 100F
Source of Rmf / Rmc	MEASUREMENT
Rin @ BHT	.754 @ 126F
Time Circulation Stopped	4 HOURS
Time Logger on Bottom	2:30 P.M.
Maximum Recorded Temperature	126F
Equipment Number	922339
Location	HAYS, KANSAS
Recorded By	JEFF LUEBBERS
Witnessed By	KIM SHOEMAKER

<<< Fold Here >>>

All interpretations are opinions based on inferences from electrical or other measurements and we cannot and do not guarantee the accuracy or correctness of any interpretation, and we shall not, except in the case of gross or willful negligence on our part, be liable or responsible for any loss, costs, damages, or expenses incurred or sustained by anyone resulting from any interpretation made by any of our officers, agents or employees. These interpretations are also subject to our general terms and conditions set out in our current Price Schedule.

Comments

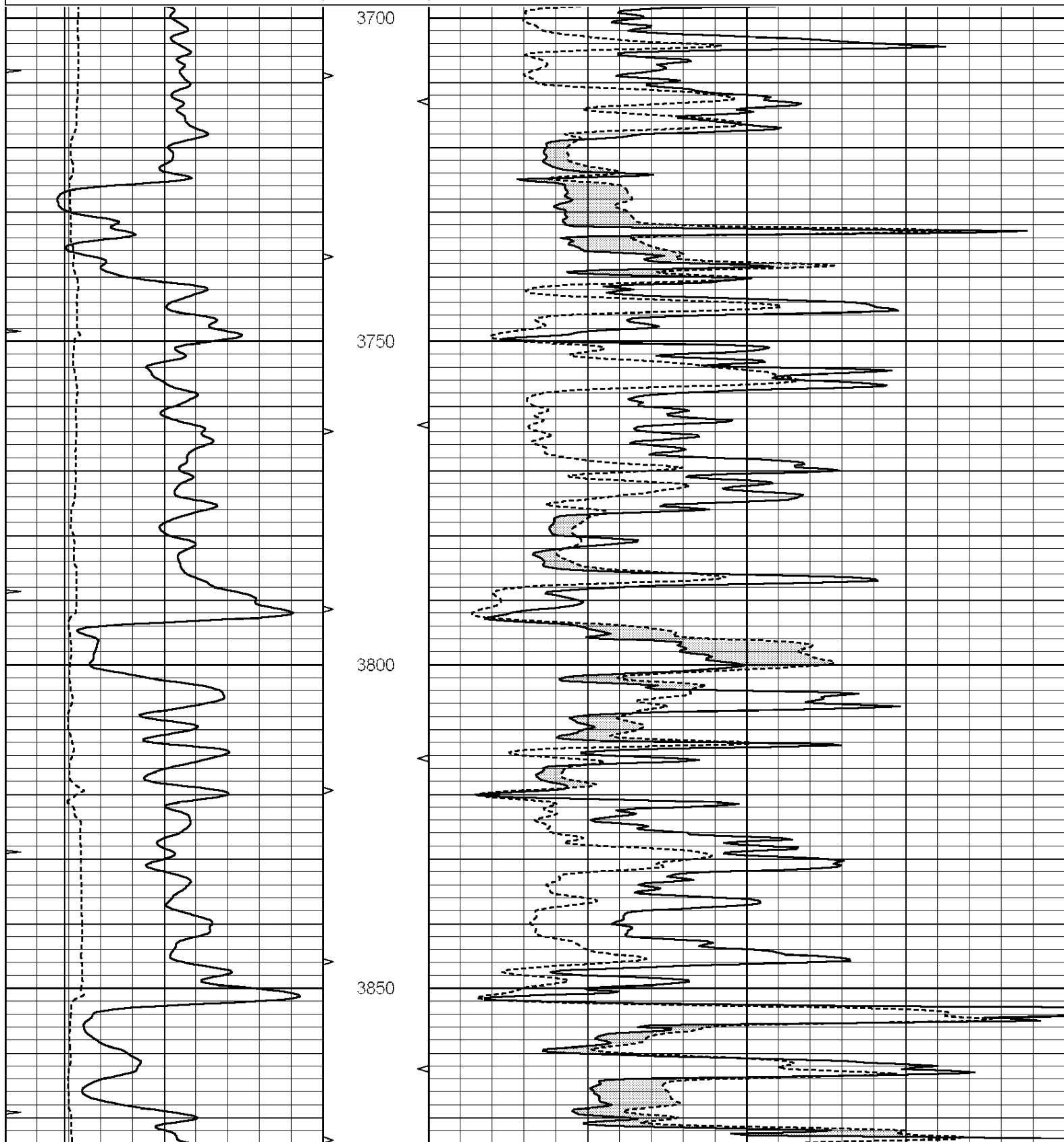
THANK YOU FOR USING ELI WIRELINE HAYS, KANSAS (785) 628-6395  
 DIRECTIONS  
 BIRD CITY, KS., 3E. ON HWY 36 TO " RD. 31", 4S., W. INTO AT GRAIN BIN

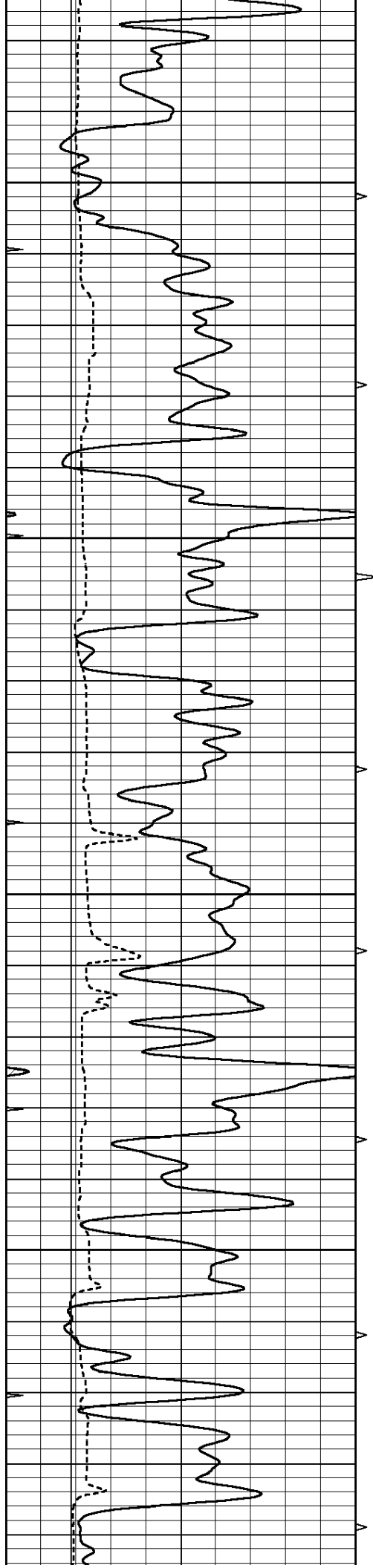


MAIN SECTION

Database File: 1421ddn.db  
 Dataset Pathname: pass6.4  
 Presentation Format: micro  
 Dataset Creation: Mon May 15 16:13:07 2017  
 Charted by: Depth in Feet scaled 1:240

0	GAMMA RAY (GAPI)	150	ABHV	0	MEL1.5 (Ohm-m)	40
6	CALIPER (in)	16	10 (ft3)	0	MEL 20 (Ohm-m)	40
0	MINMK	20	TBHV			
			0 (ft3)	10		



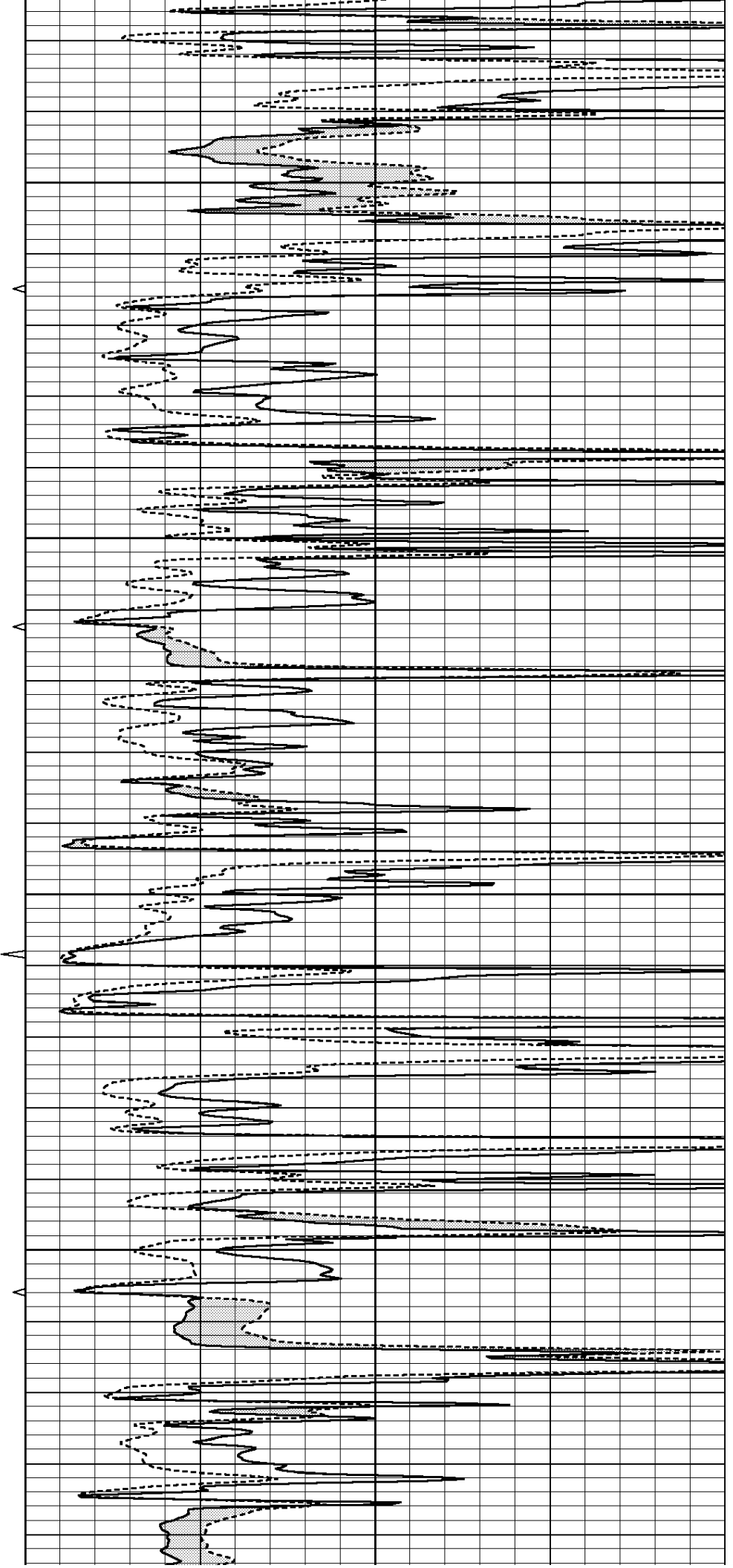


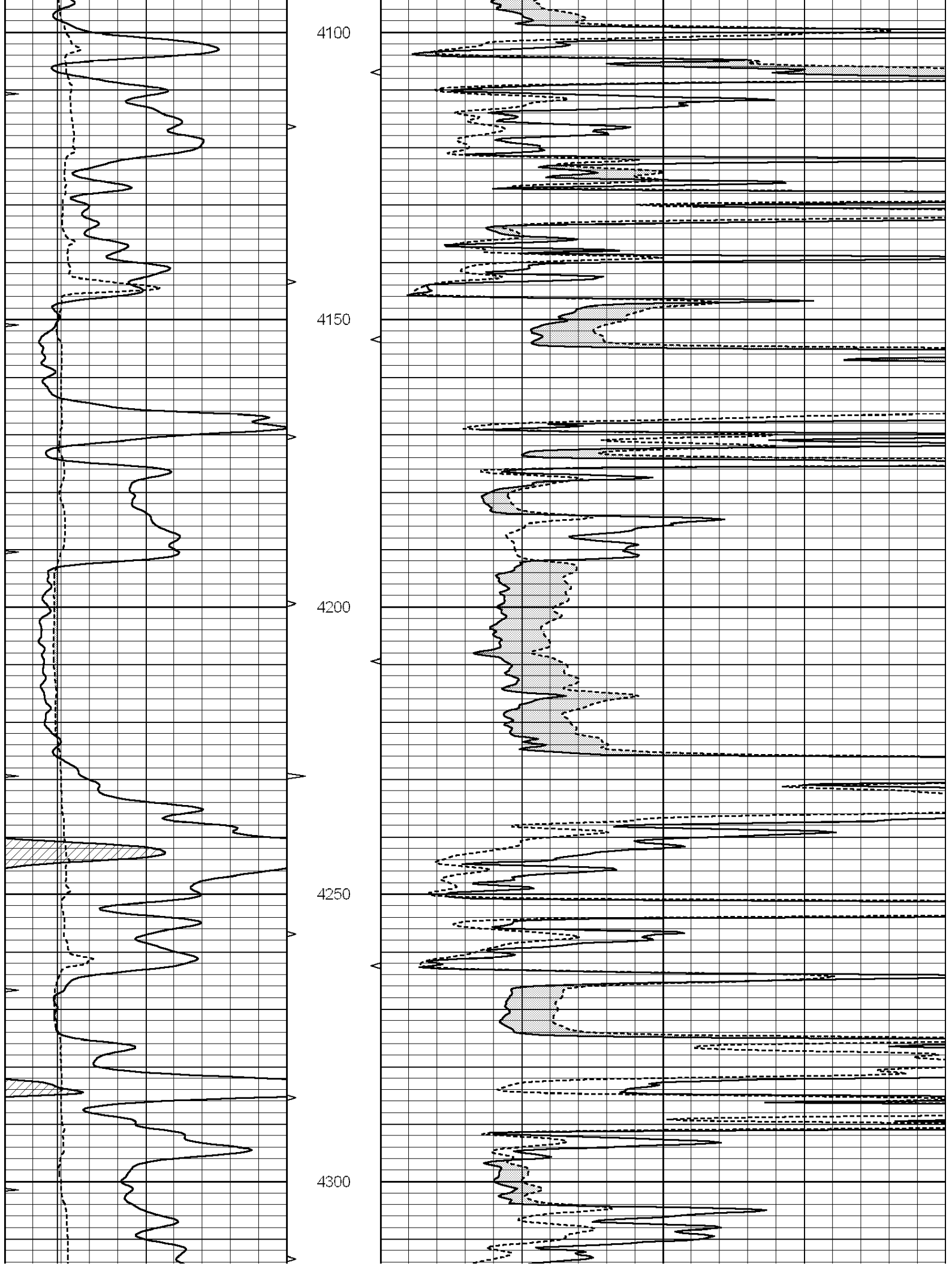
3900

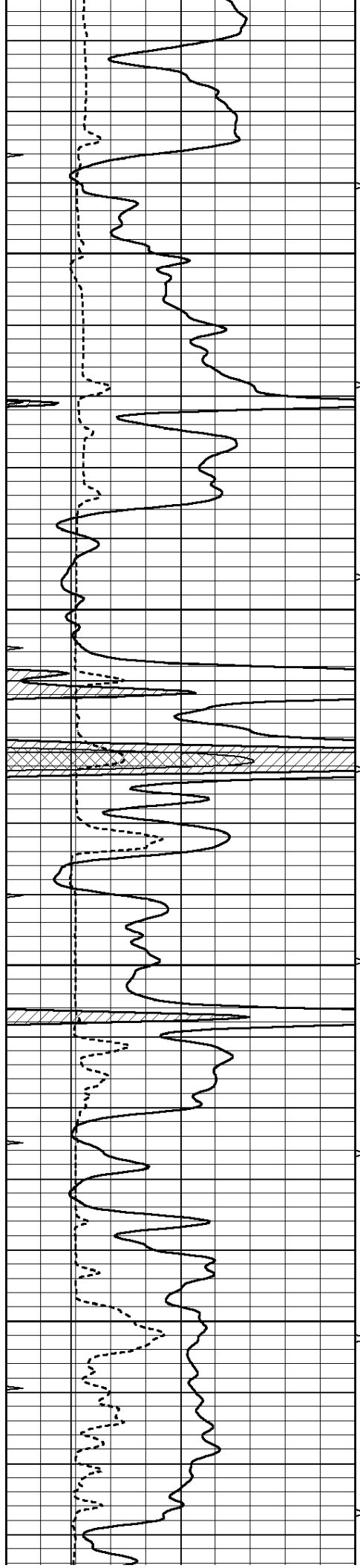
3950

4000

4050





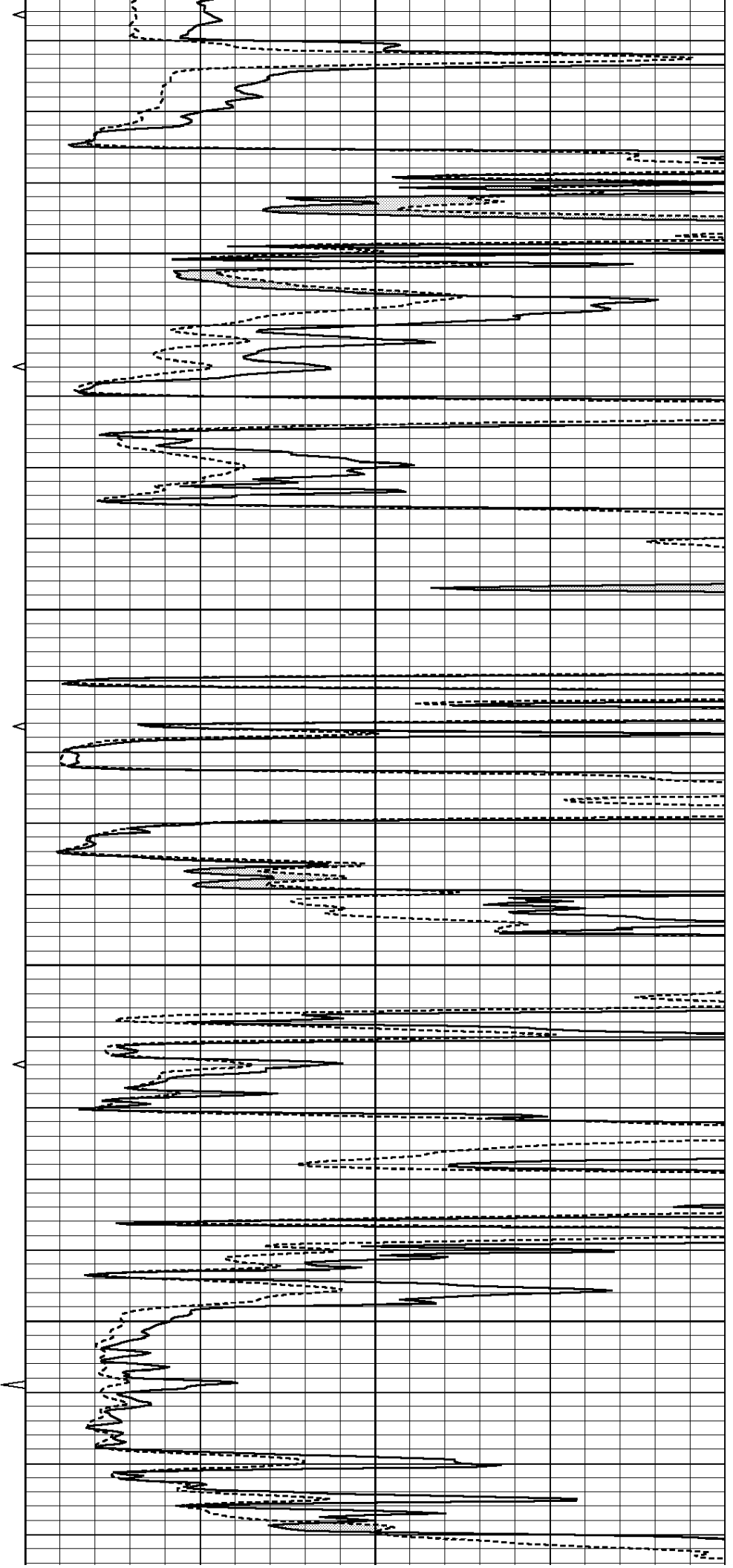


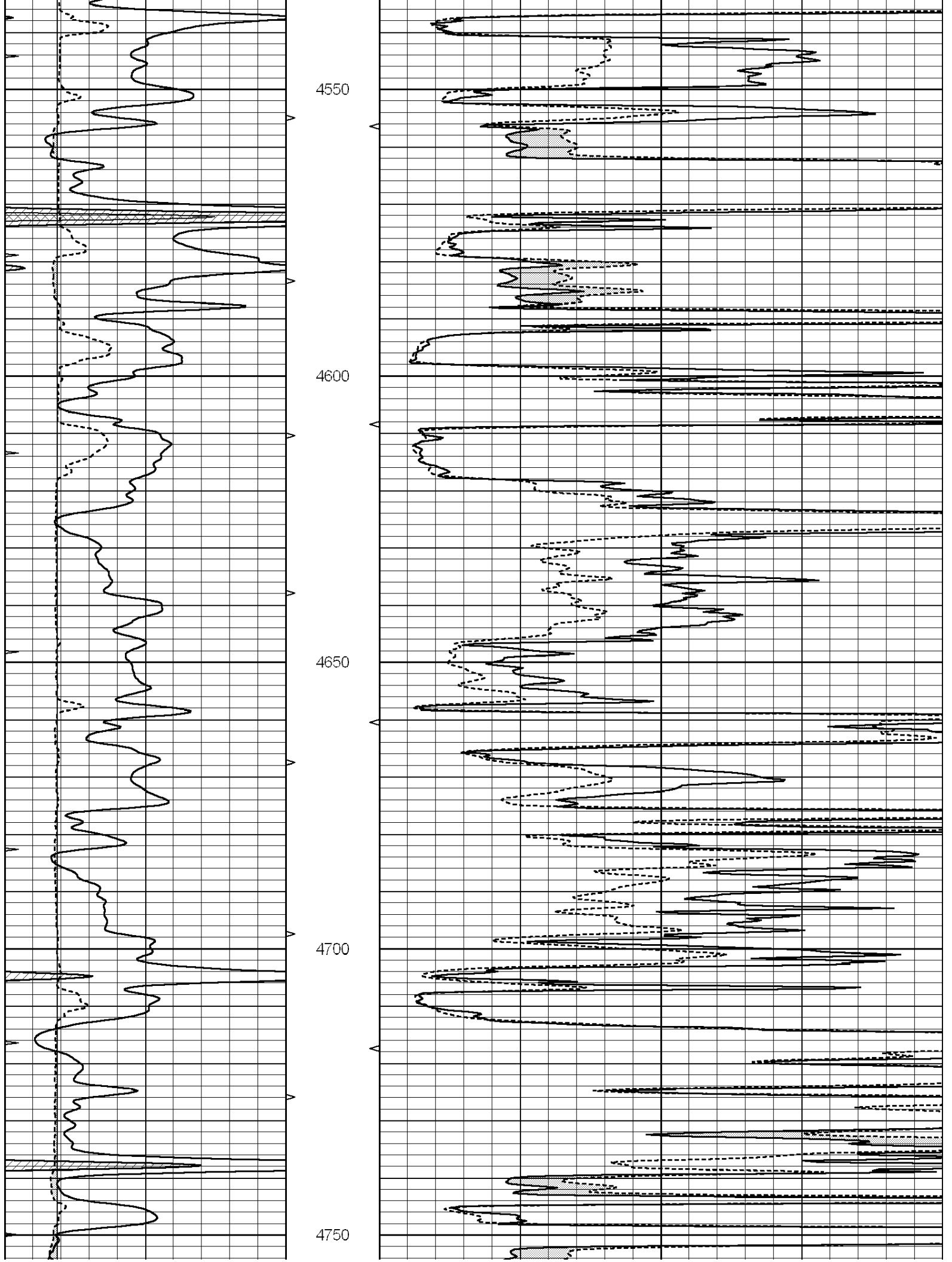
4350

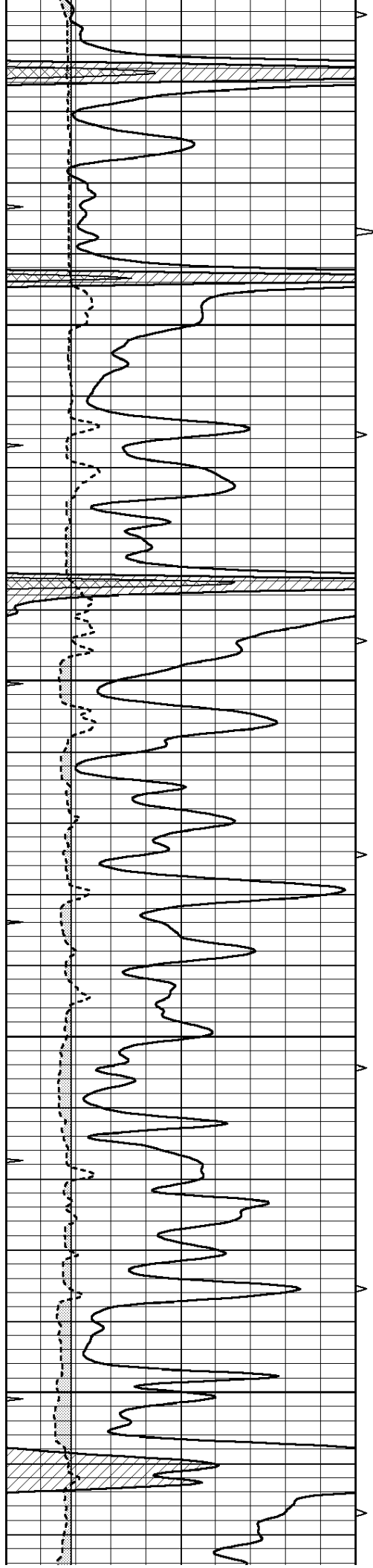
4400

4450

4500





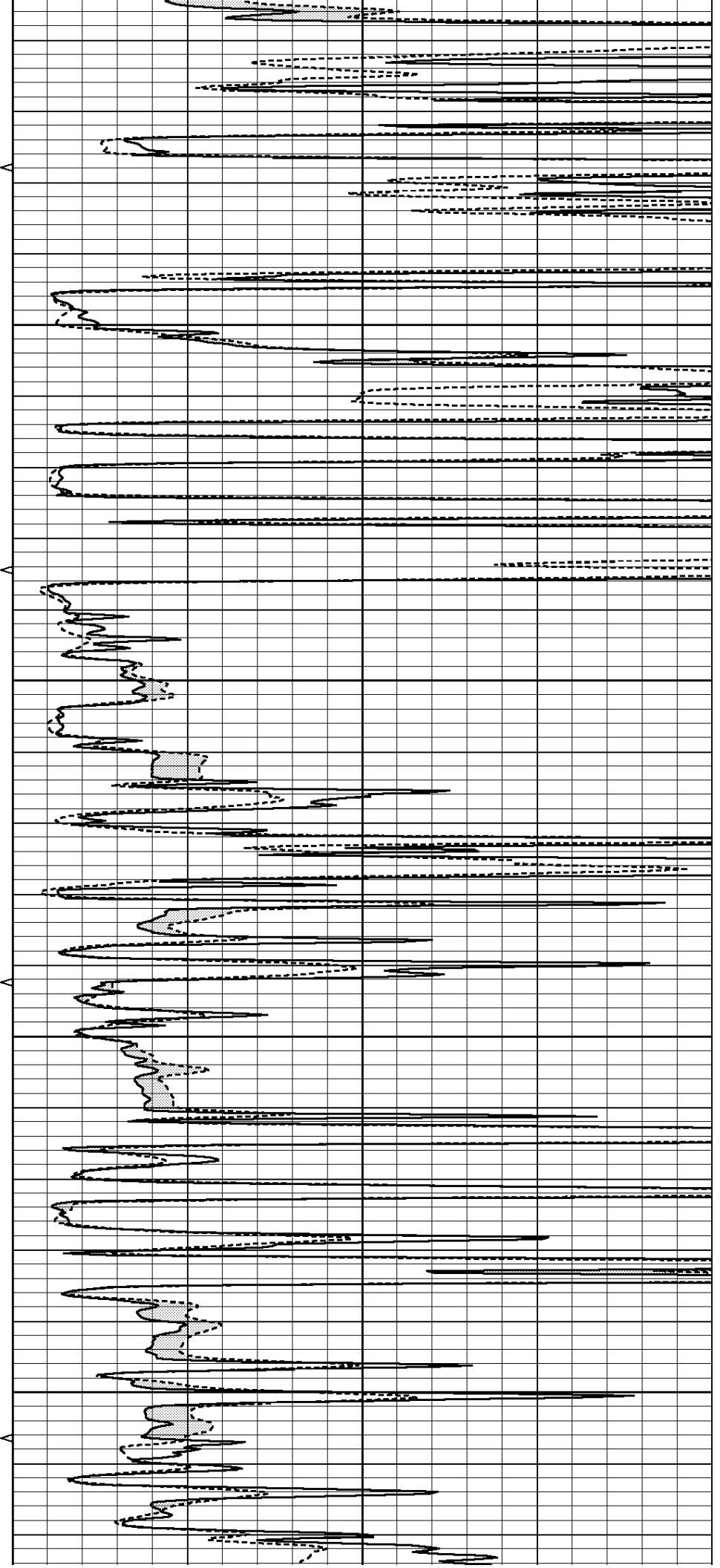


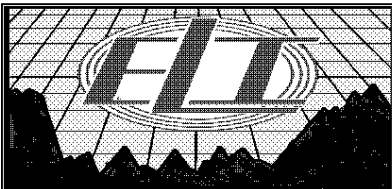
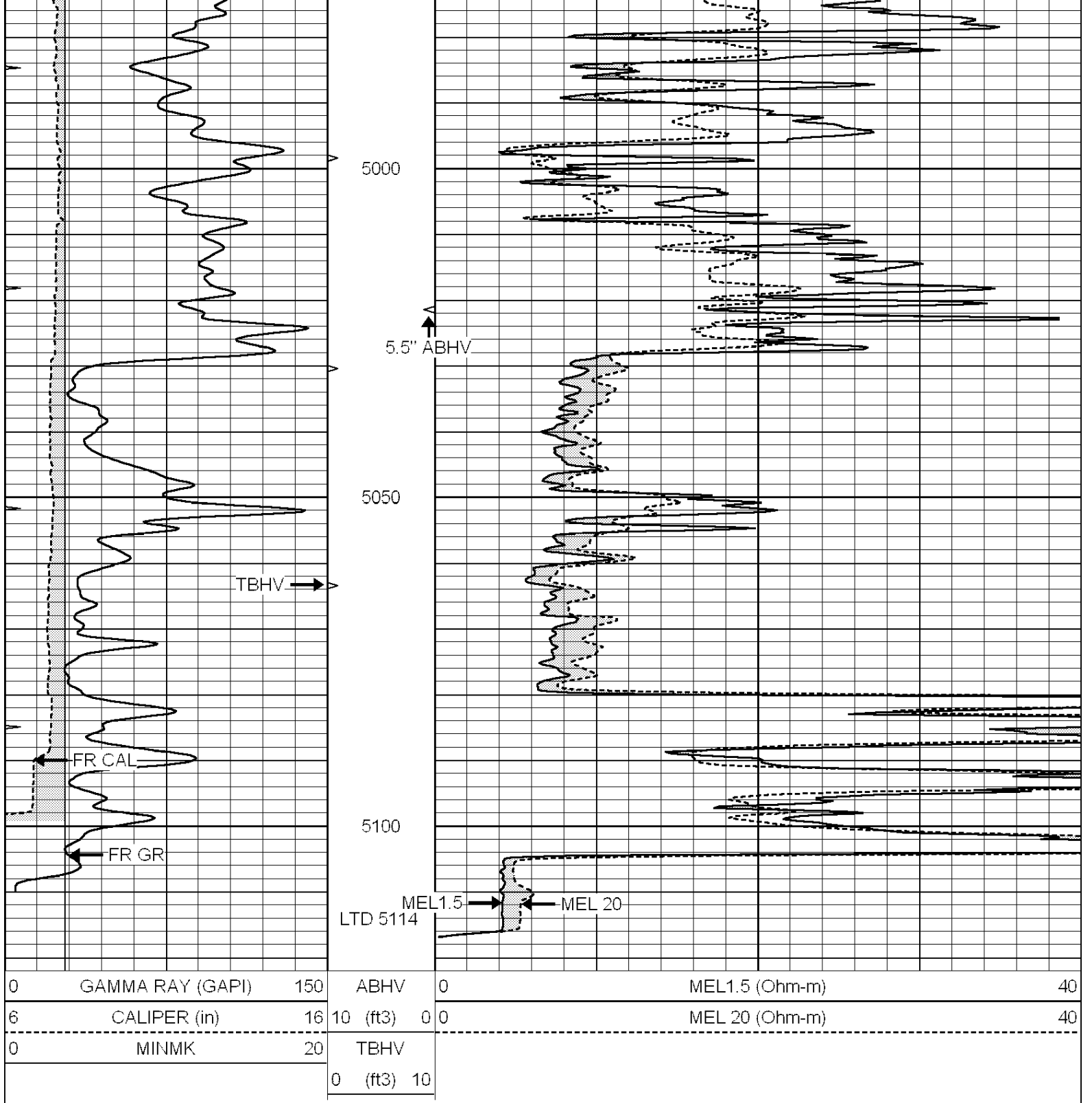
4800

4850

4900

4950





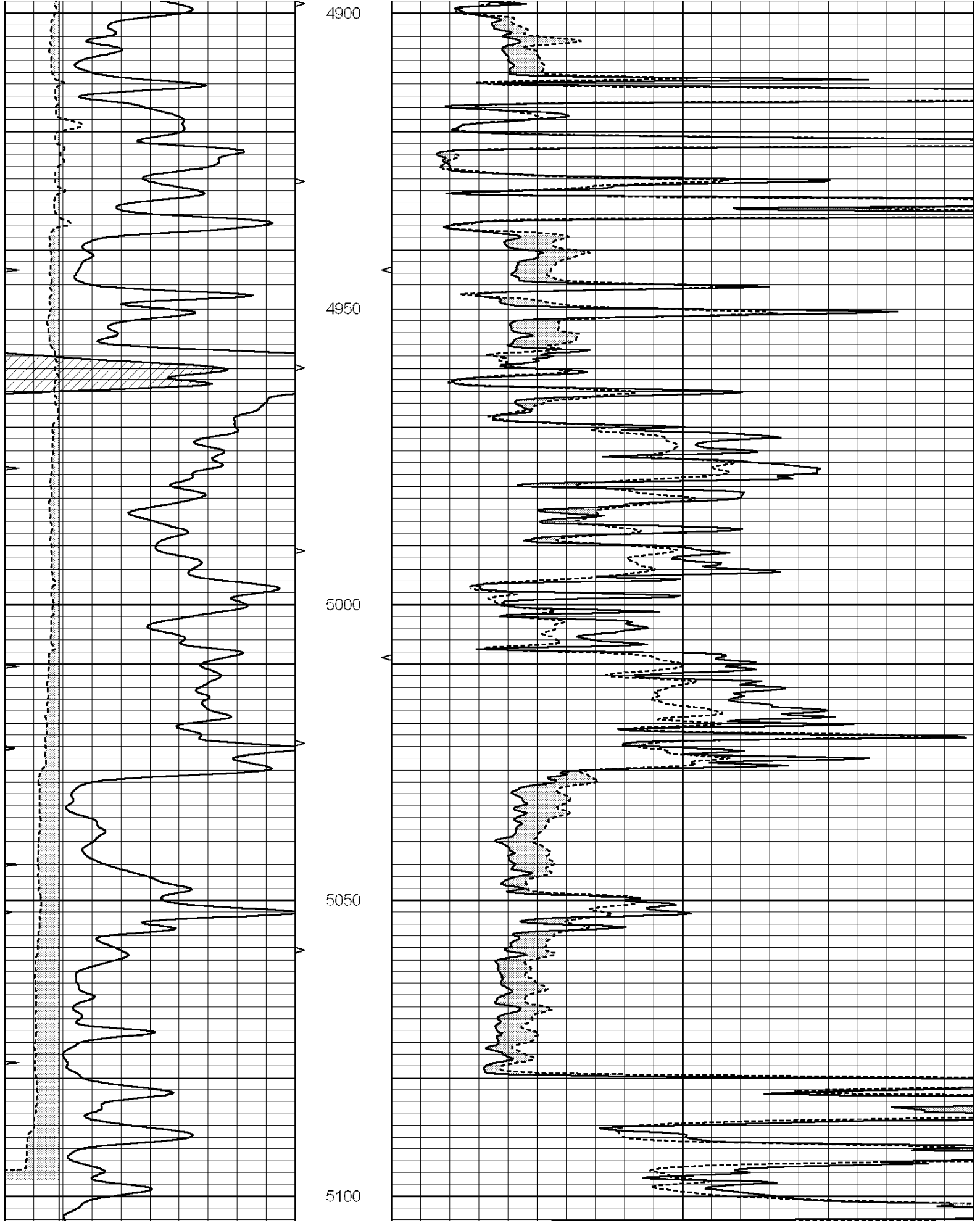
# REPEAT SECTION

Database File: 1421ddn.db  
 Dataset Pathname: pass5.5  
 Presentation Format: micro  
 Dataset Creation: Mon May 15 15:55:15 2017  
 Charted by: Depth in Feet scaled 1:240

0	GAMMA RAY (GAPI)	150	ABHV	0	MEL1.5 (Ohm-m)	40
6	CALIPER (in)	16	10 (ft3)	0	MEL 20 (Ohm-m)	40



6	CALIPER (in)	10	10	(ITS)	0	0	MEL 20 (GPH-IT)	40
0	MINMK	20	TBHV					
			0	(ft3)	10			



0	GAMMA RAY (GAPI)	150	ABHV	0	MEL1.5 (Ohm-m)	40
6	CALIPER (in)	16	10 (ft3)	0	MEL 20 (Ohm-m)	40
0	MINMK	20	TBHV			
			0 (ft3)	10		

### Calibration Report

Database File: 1421ddn.db  
Dataset Pathname: pass6.4  
Dataset Creation: Mon May 15 16:13:07 2017

#### MICRO Calibration Report

Serial Number:	070911	
Tool Model:	ProbeN	
Performed:	Mon May 15 15:30:39 2017	
Caliper Calibration:	Gain=3.120	Offset=3.520
References	Low Cal	High Cal
Readings	8.200	16.000
	1.500	4.000
1.5" Calibration:	Gain=42.000	Offset=-1.300
References	Low Cal	High Cal
Readings	0.000	20.000
	0.001	1.240
2" Calibration:	Gain=45.000	Offset=-1.200
References	Low Cal	High Cal
Readings	0.000	20.000
	0.001	1.076

#### Gamma Ray Calibration Report

Serial Number:	070559	
Tool Model:	OPEN_GR	
Performed:	Fri May 05 15:40:40 2017	
Calibrator Value:	1.0	GAPI
Background Reading:	0.0	cps
Calibrator Reading:	1.0	cps
Sensitivity:	0.2000	GAPI/cps