



**BOREHOLE
VOLUME
LOG**

Company	Coachman Energy Operating		
Well	Penney 1-14-15-20		
Field	Wildcat		
County	Ellis		
State	Kansas		
Company	Coachman Energy Operating Company, LLC		
Well	Penney 1-14-15-20		
Field	Wildcat		
County	Ellis		
State	Kansas		
Location:	API #: 15 051 26867		
	125' FSL & 555' FEL		
	SEC 14 TWP 15S RGE 20W		
Permanent Datum	Ground Level	Elevation	2044'
Log Measured From	KB 8' AGL		
Drilling Measured From	KB		
		Other Services	DIL CDNL ML
		Elevation	K.B. 2052' D.F. 2051' G.L. 2044'

Date	3-27-17
Run Number	TWO
Depth Driller	3770'
Depth Logger	3772'
Bottom Logged Interval	3764'
Top Log Interval	200'
Casing Driller	8 5/8" @ 221'
Casing Logger	221'
Bit Size	7 7/8"
Type Fluid in Hole	Chemical
Density / Viscosity	9.4/55
pH / Fluid Loss	10.5/8.8
Source of Sample	Pit
Rm @ Meas. Temp	2.9@72degf
Rmf @ Meas. Temp	2.17@72degf
Rmc @ Meas. Temp	3.48@72degf
Source of Rmf / Rmc	Calculated
Rm @ BHT	1.86@112degf
Time Circulation Stopped	2:00 p.m.
Time Logger on Bottom	6:30 p.m.
Maximum Recorded Temperature	112degf
Equipment Number	T-127
Location	Hays, KS
Recorded By	Casey Patterson
Witnessed By	Mr. Bob Plante
	Mr. Charlie Sturdavant

<<< Fold Here >>>

All interpretations are opinions based on inferences from electrical or other measurements and we cannot and do not guarantee the accuracy or correctness of any interpretation, and we shall not, except in the case of gross or willful negligence on our part, be liable or responsible for any loss, costs, damages, or expenses incurred or sustained by anyone resulting from any interpretation made by any of our officers, agents or employees. These interpretations are also subject to our general terms and conditions set out in our current Price Schedule.

Comments

Antonino Rd. West to 180th Ave., then 3 mi. South to Chetolah Gold Rd.,
then 1mi West to cattle Guard on county Rd.,
Continue West through cattle guard this is cattle guard #1,
West on this Rd. to the Third Cattle Guard(approx. 2 mi.)
Approximatley 900' West of Third Cattle Guard to Ingress Path on South Side of County Rd.
Follow path South to Location(about 1 mi South)

Thanks for using Gemini Wireline LLC
785-625-1182

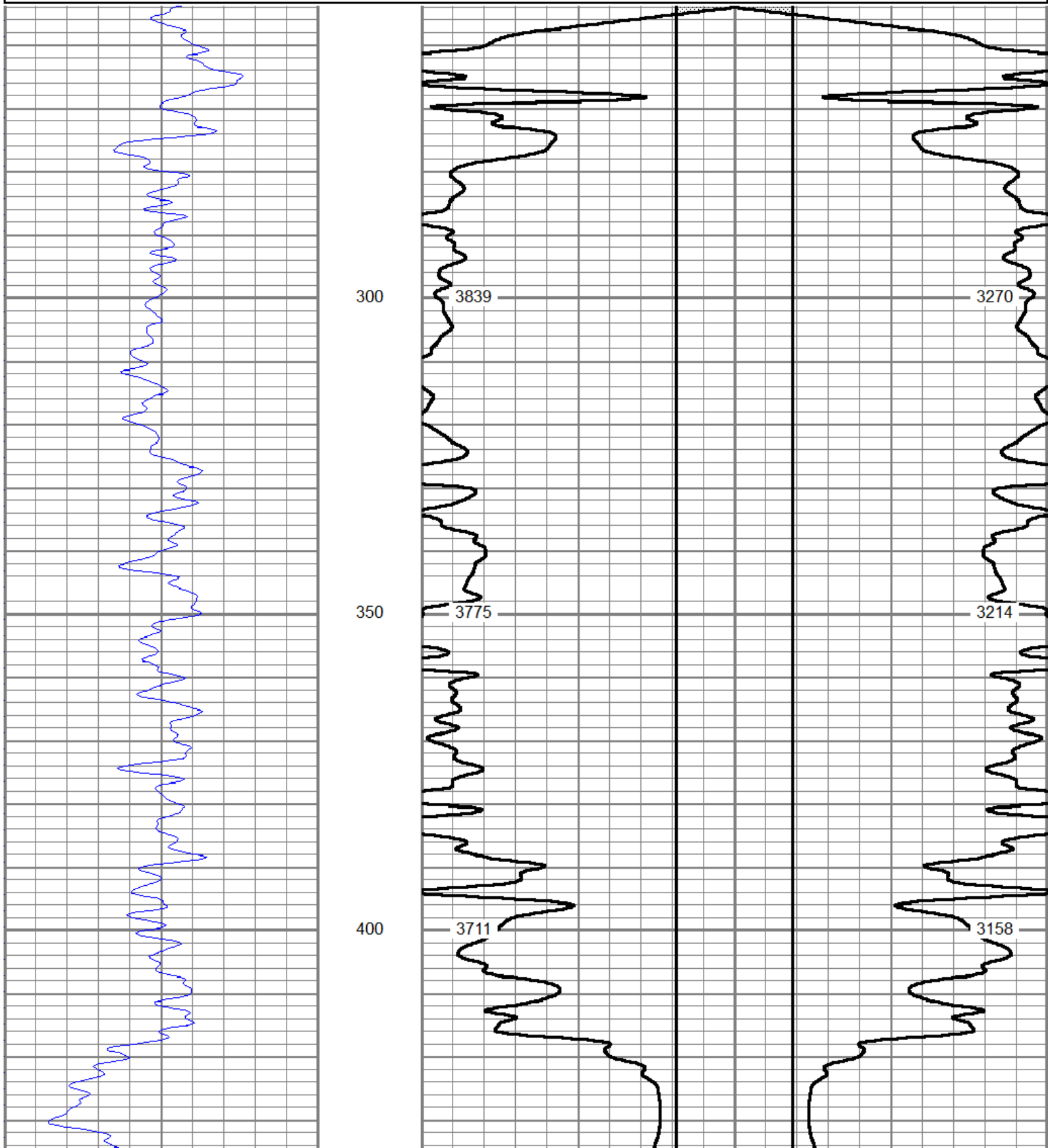


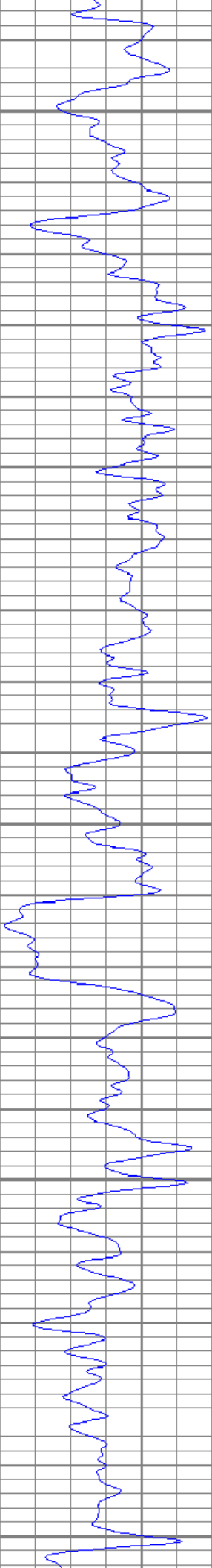
Main Pass

Database File cepenny1-14-15-20h.db
 Dataset Pathname pass5
 Presentation Format boreholevolumem
 Dataset Creation Mon Mar 27 19:02:21 2017
 Charted by Depth in Feet scaled 1:240

0 GR (GAPI) 150

16	MCAL (in)	6	6	MCAL (in)	16
16	BOREID (in)	6	6	BOREID (in)	16
TBHV (ft3)			ABHV (ft3)		





450

3677

500

3631

550

3570

600

3491

650

3422

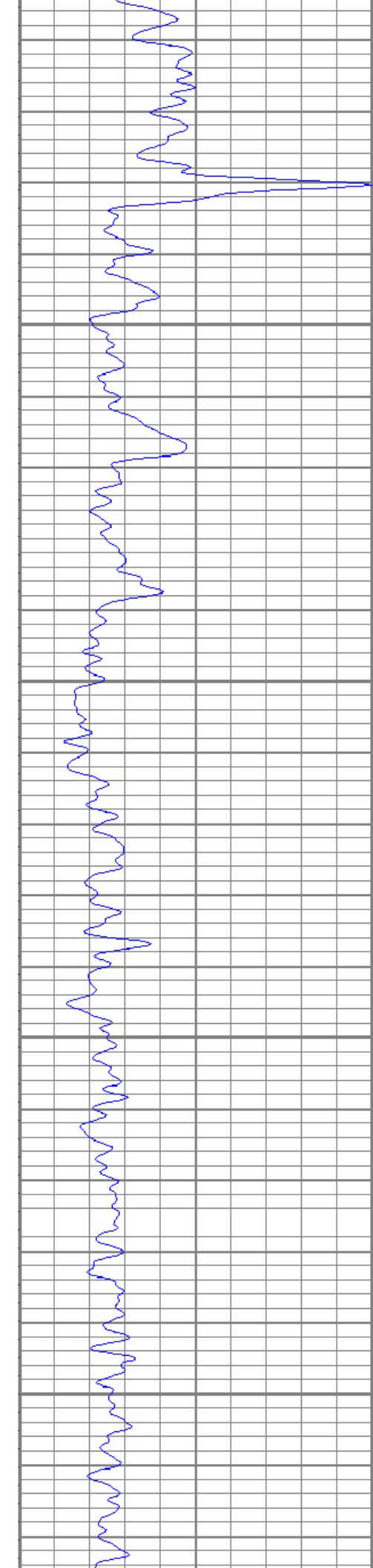
3132

3095

3042

2971

2911



700

3336

2833

750

3213

2718

800

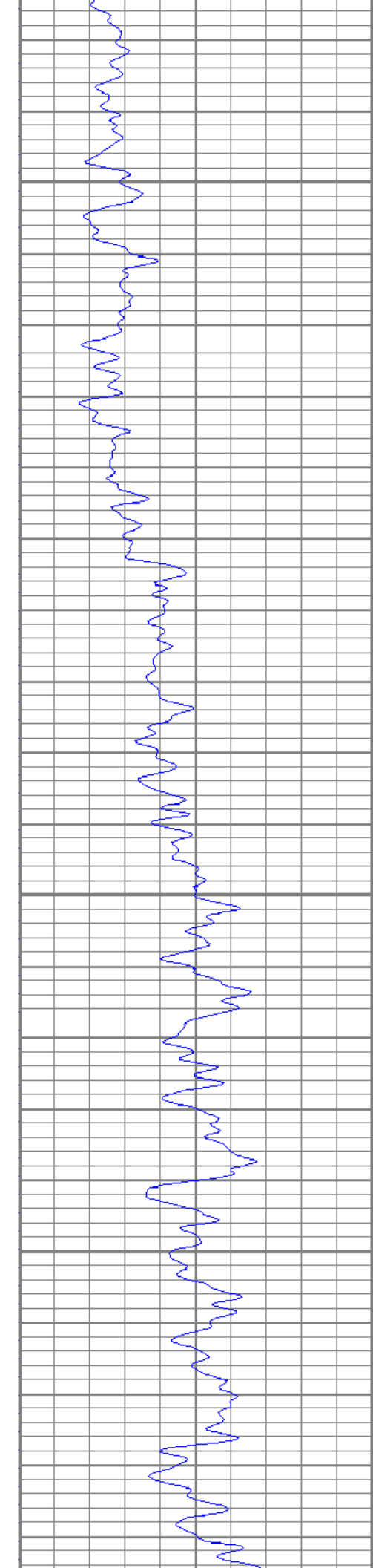
3095

2608

850

2976

2497



900

2850

2379

950

2752

2290

1000

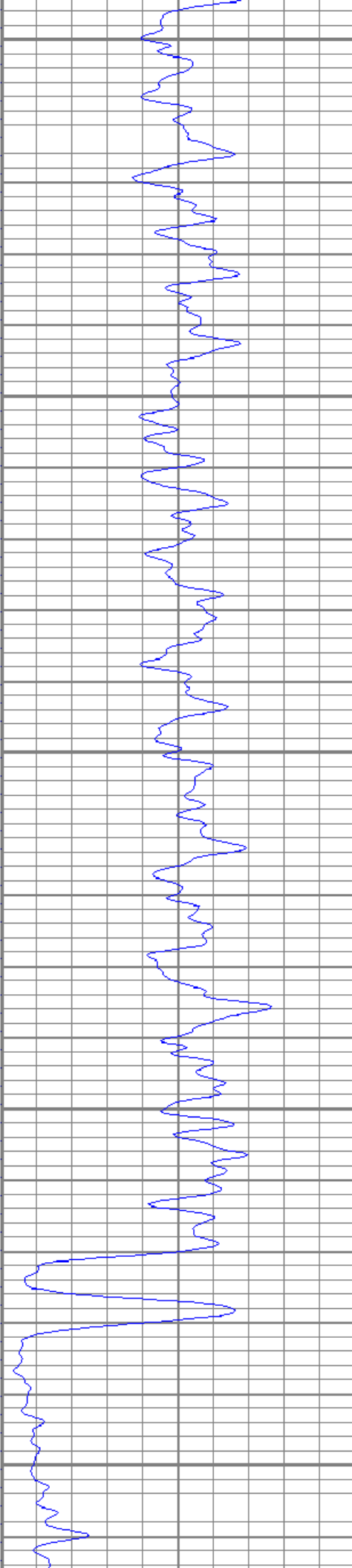
2677

2223

1050

2623

2178



1100

2560

2122

1150

2510

2081

1200

2466

2045

1250

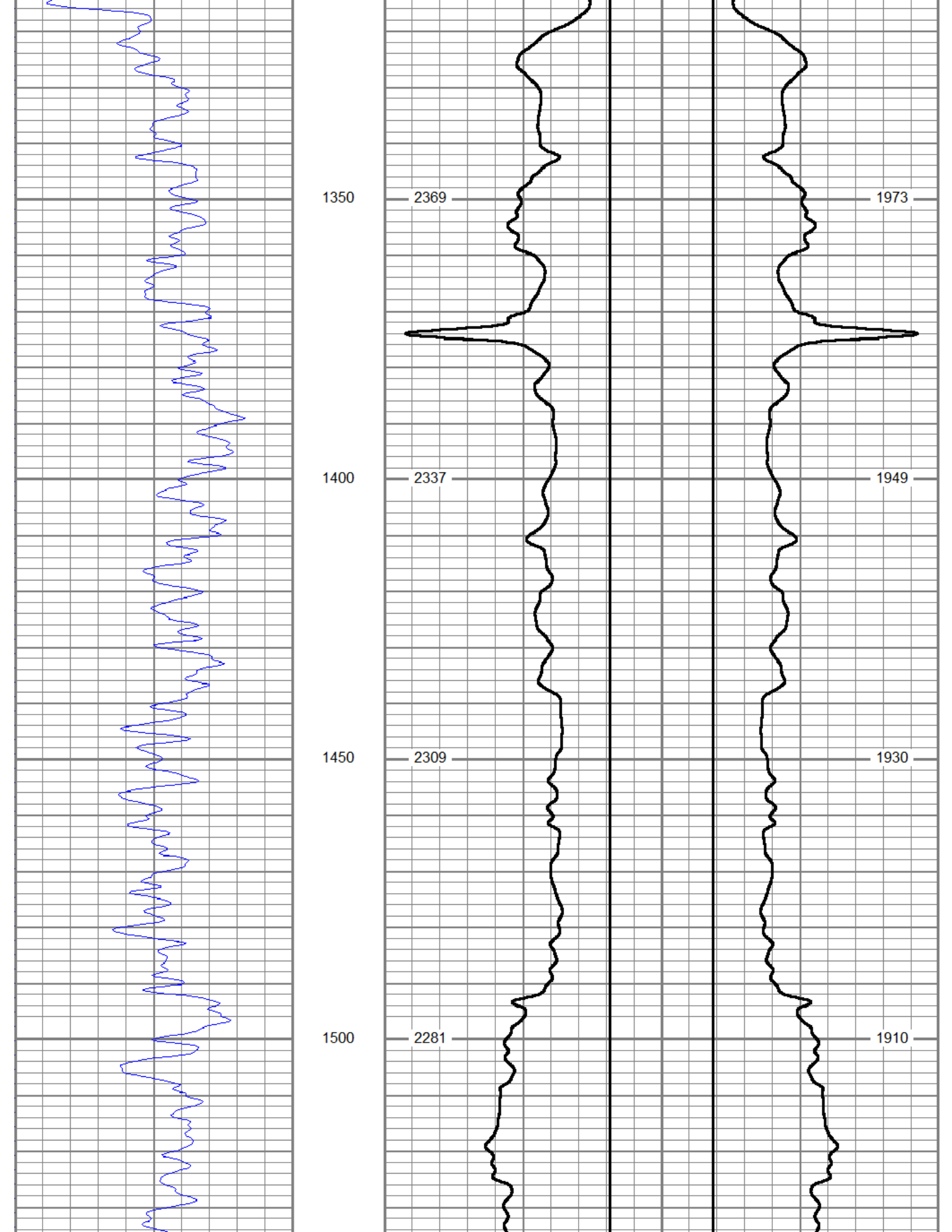
2424

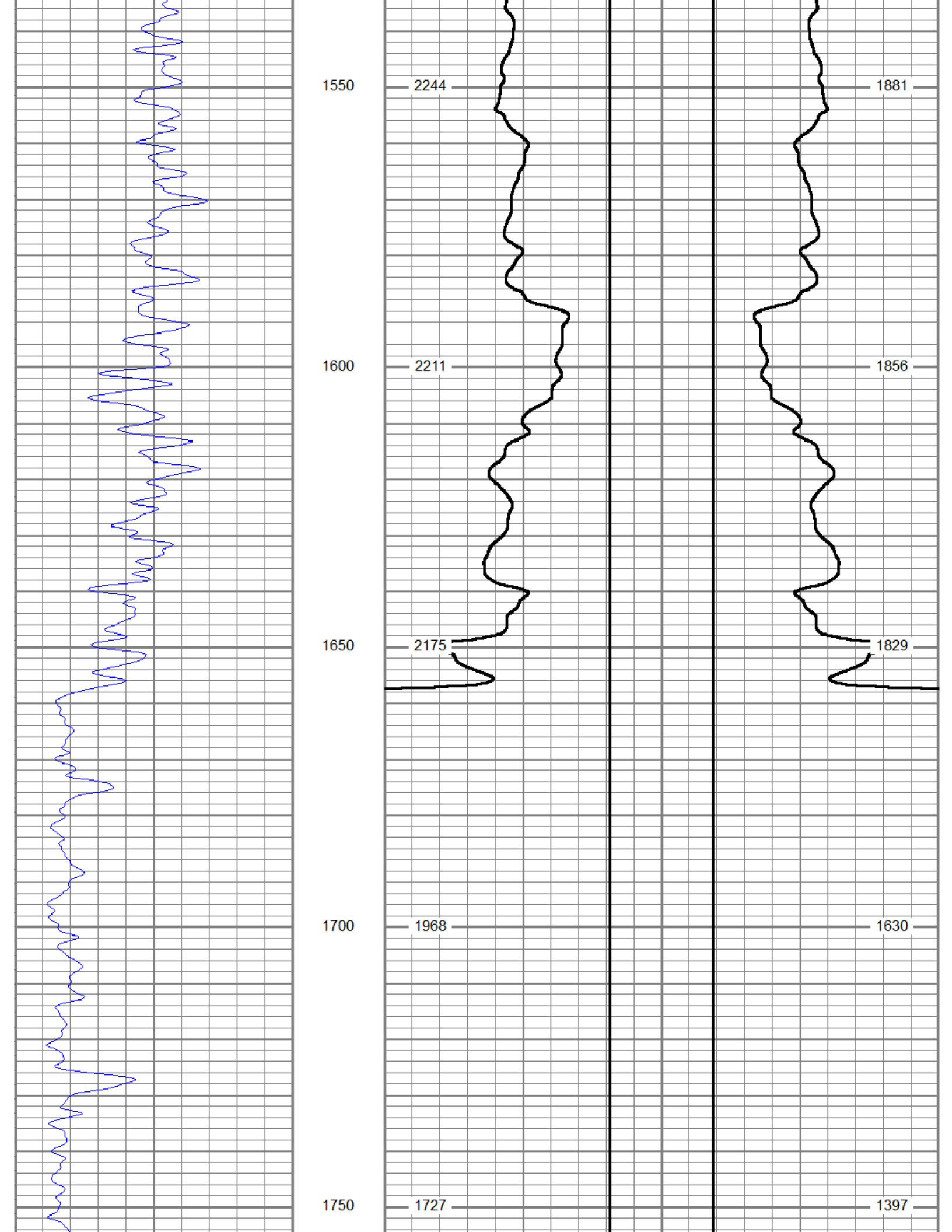
2011

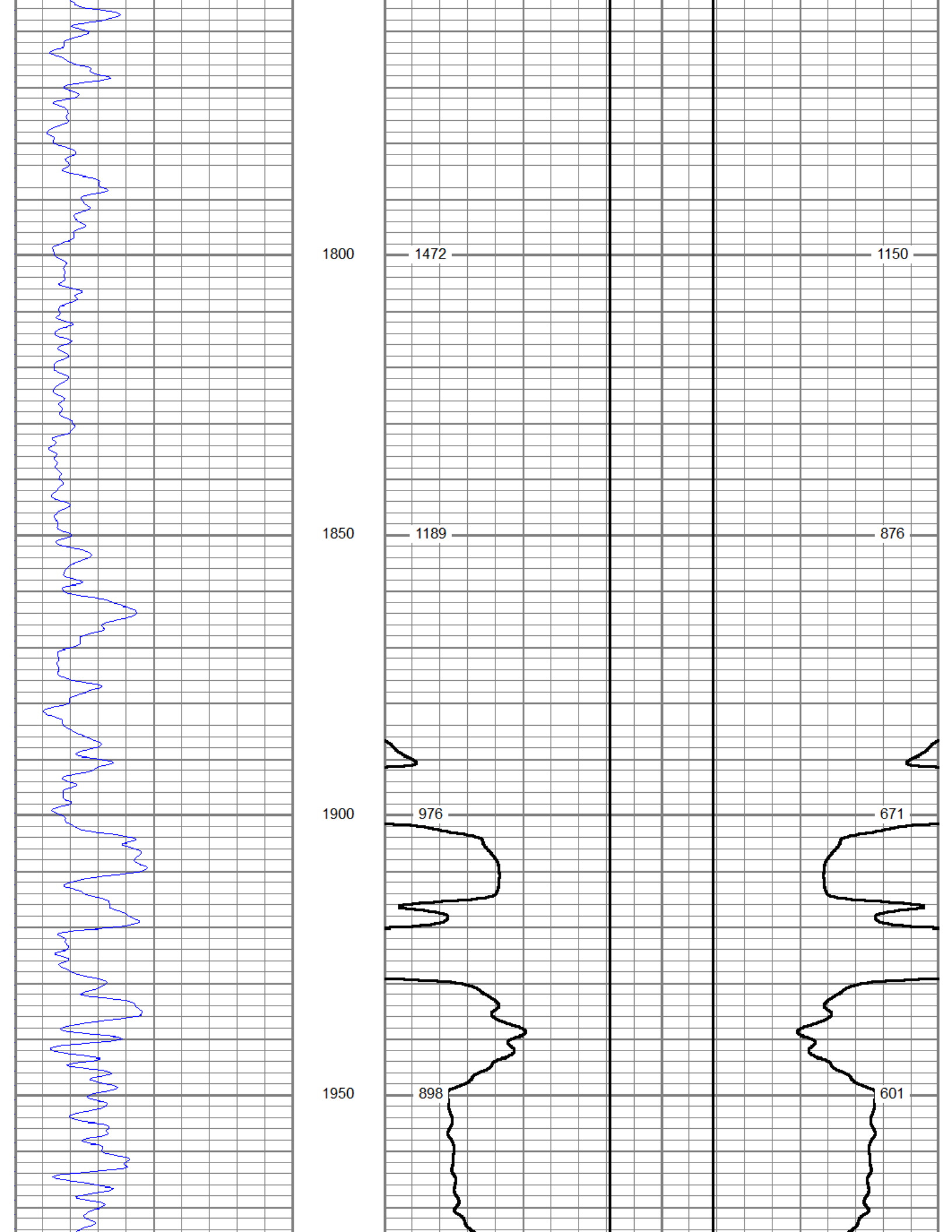
1300

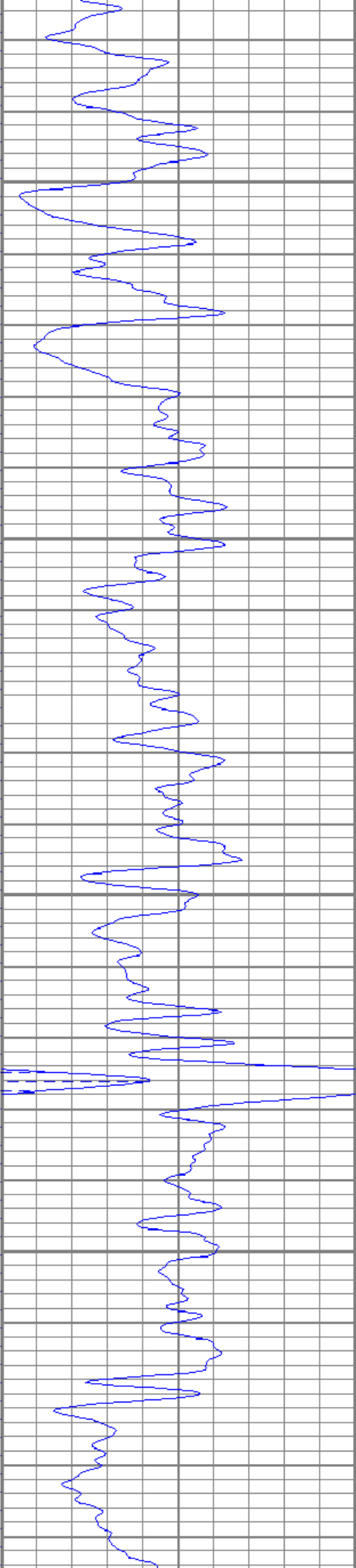
2395

1991









2000

853

2050

798

2100

752

2150

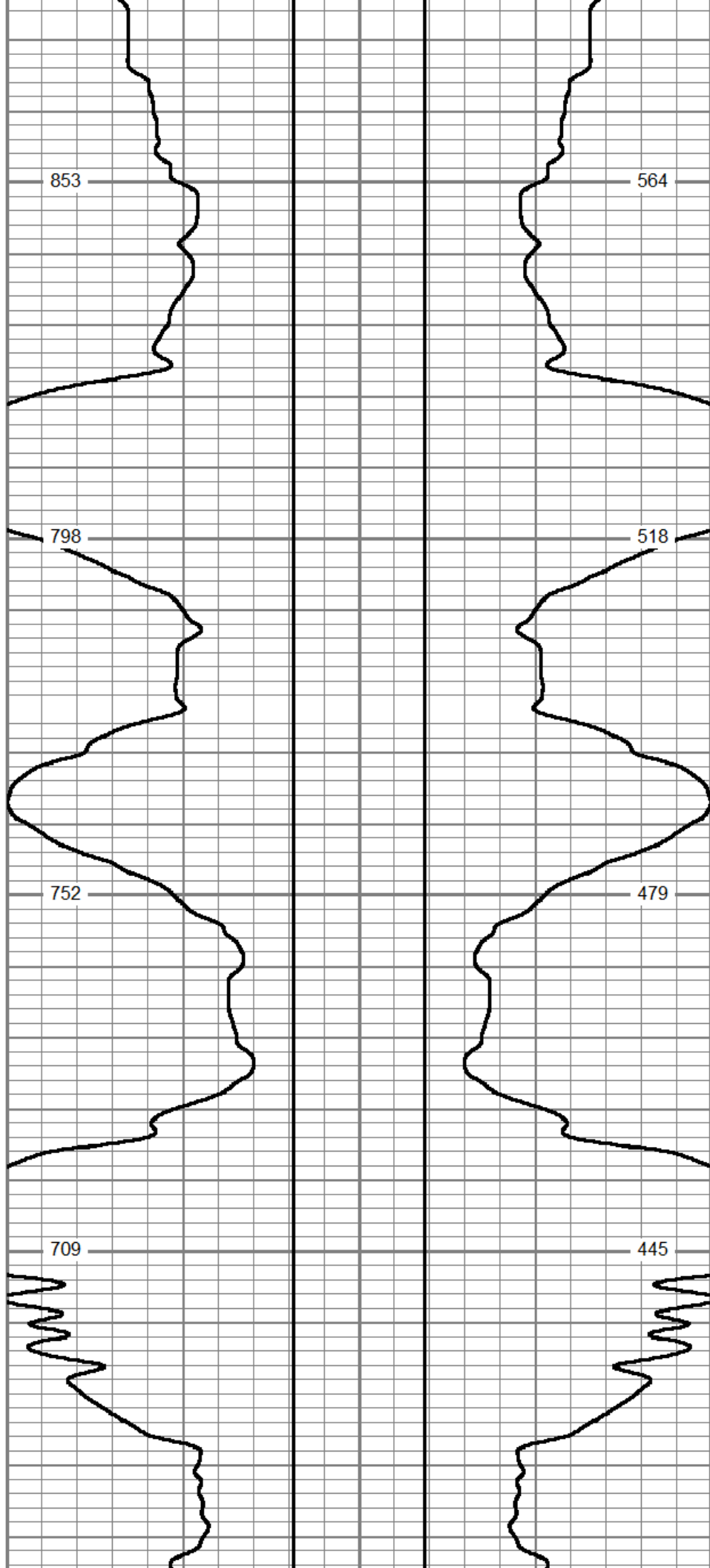
709

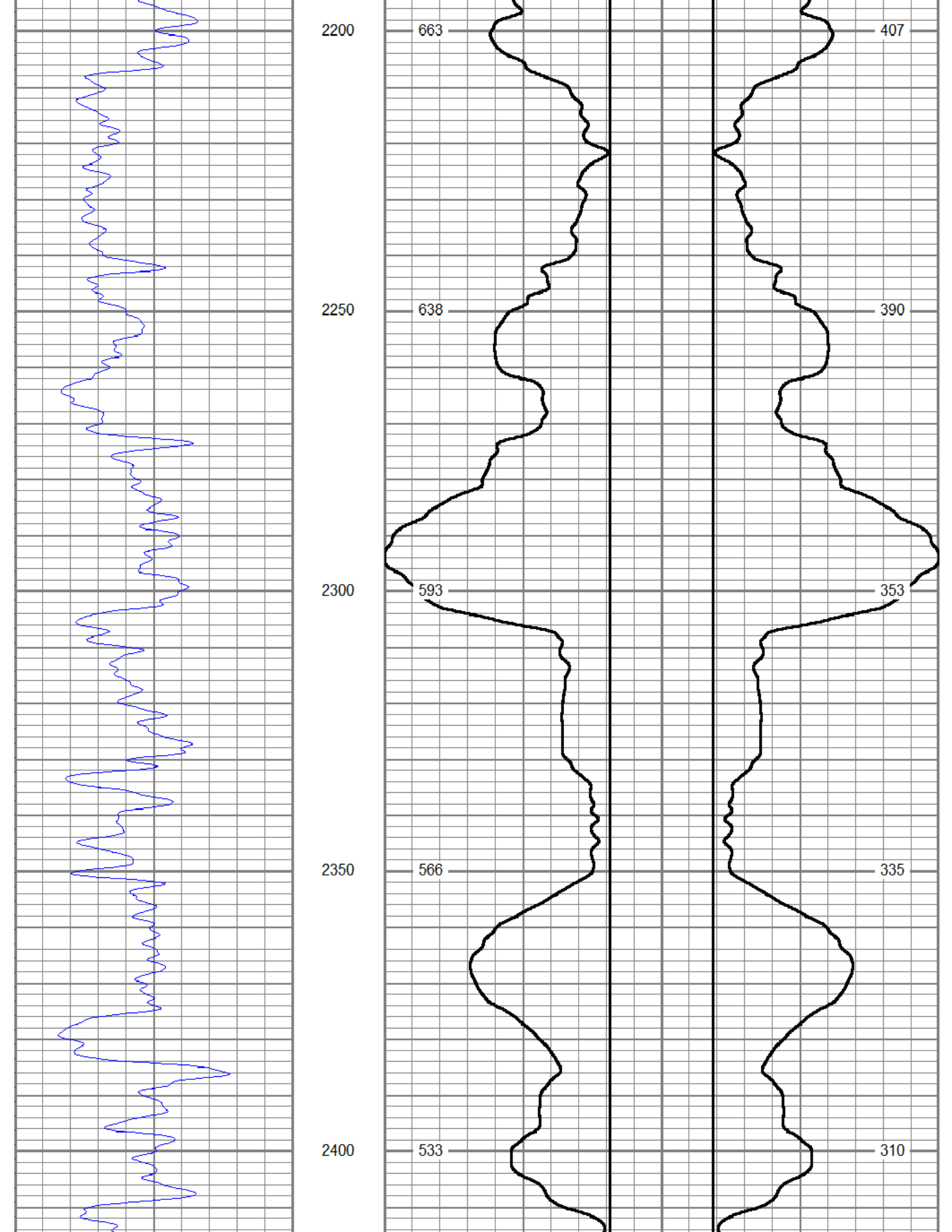
564

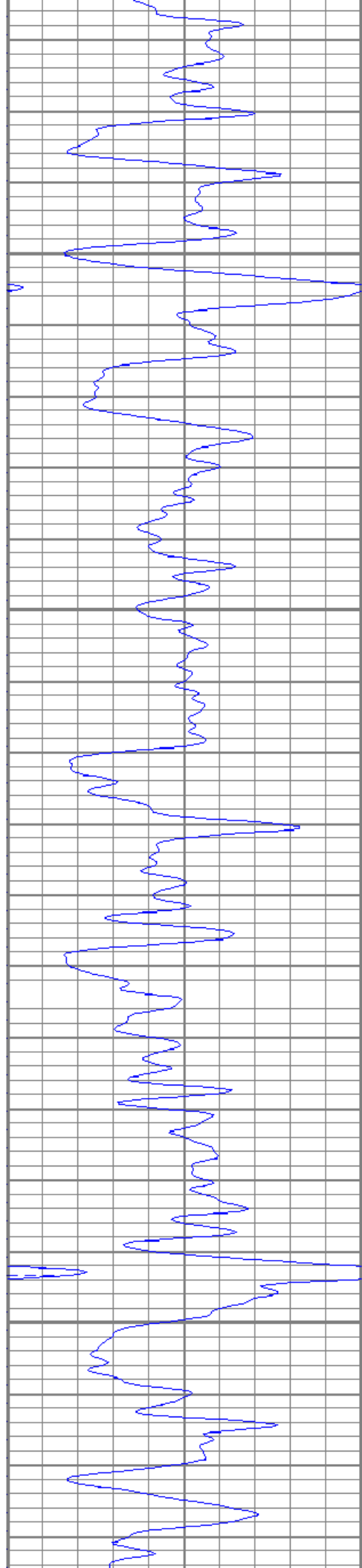
518

479

445







2450

2500

2550

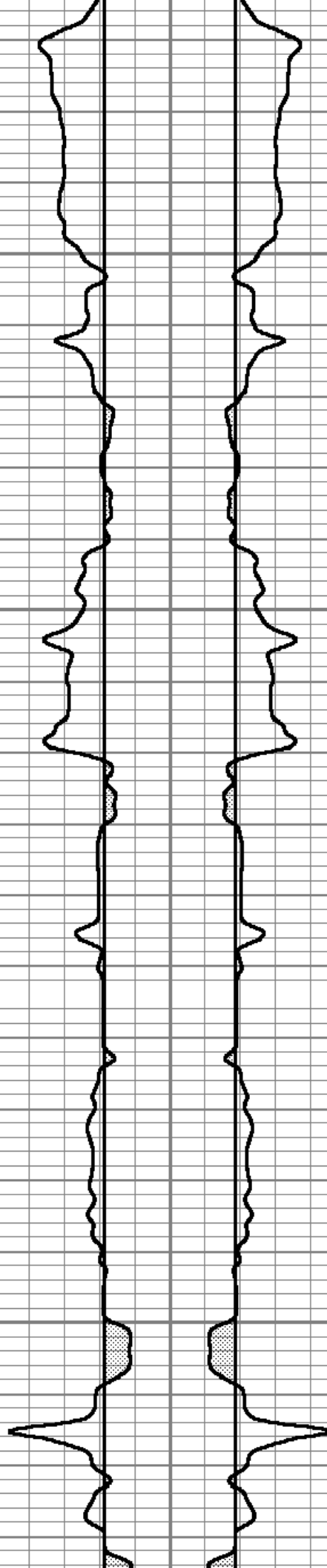
2600

509

491

472

454

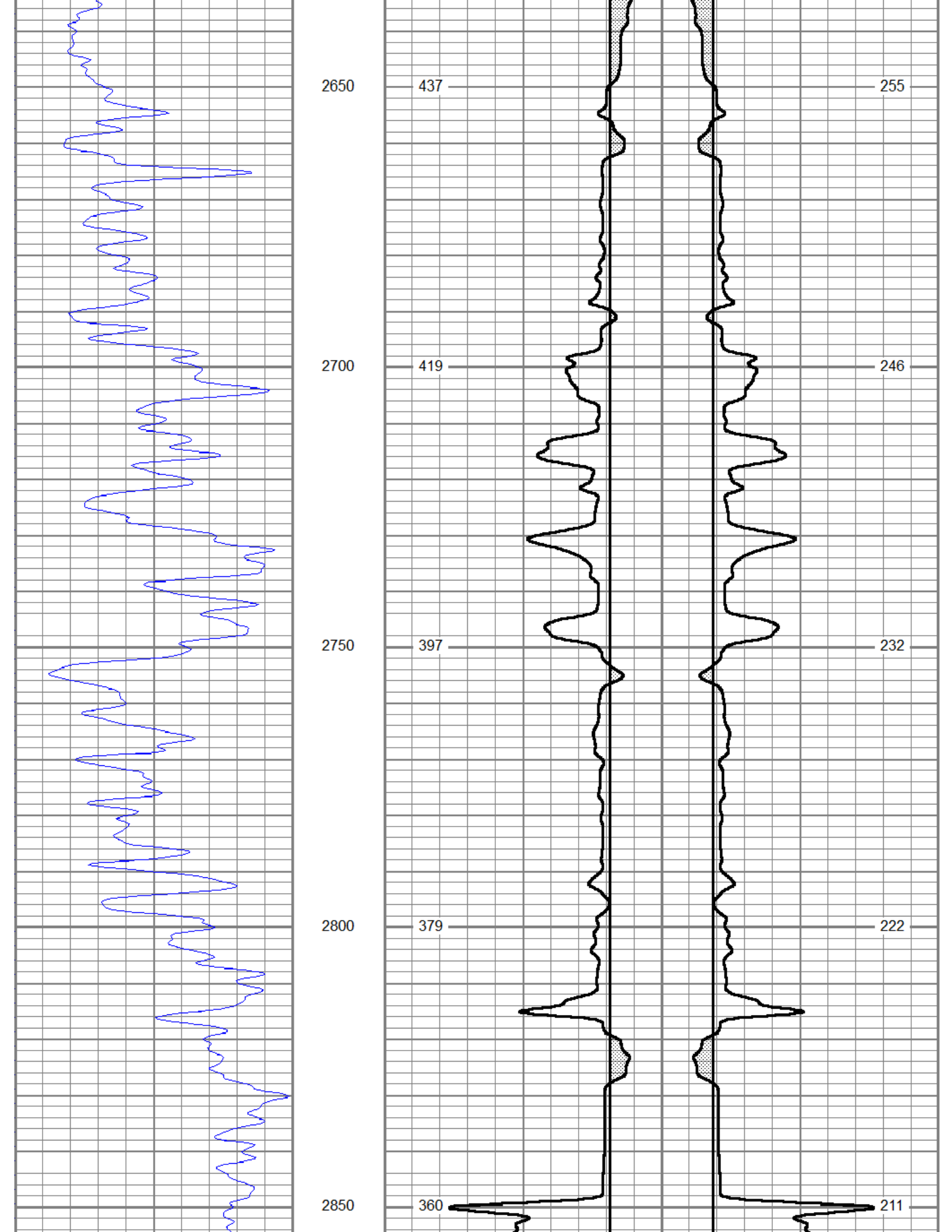


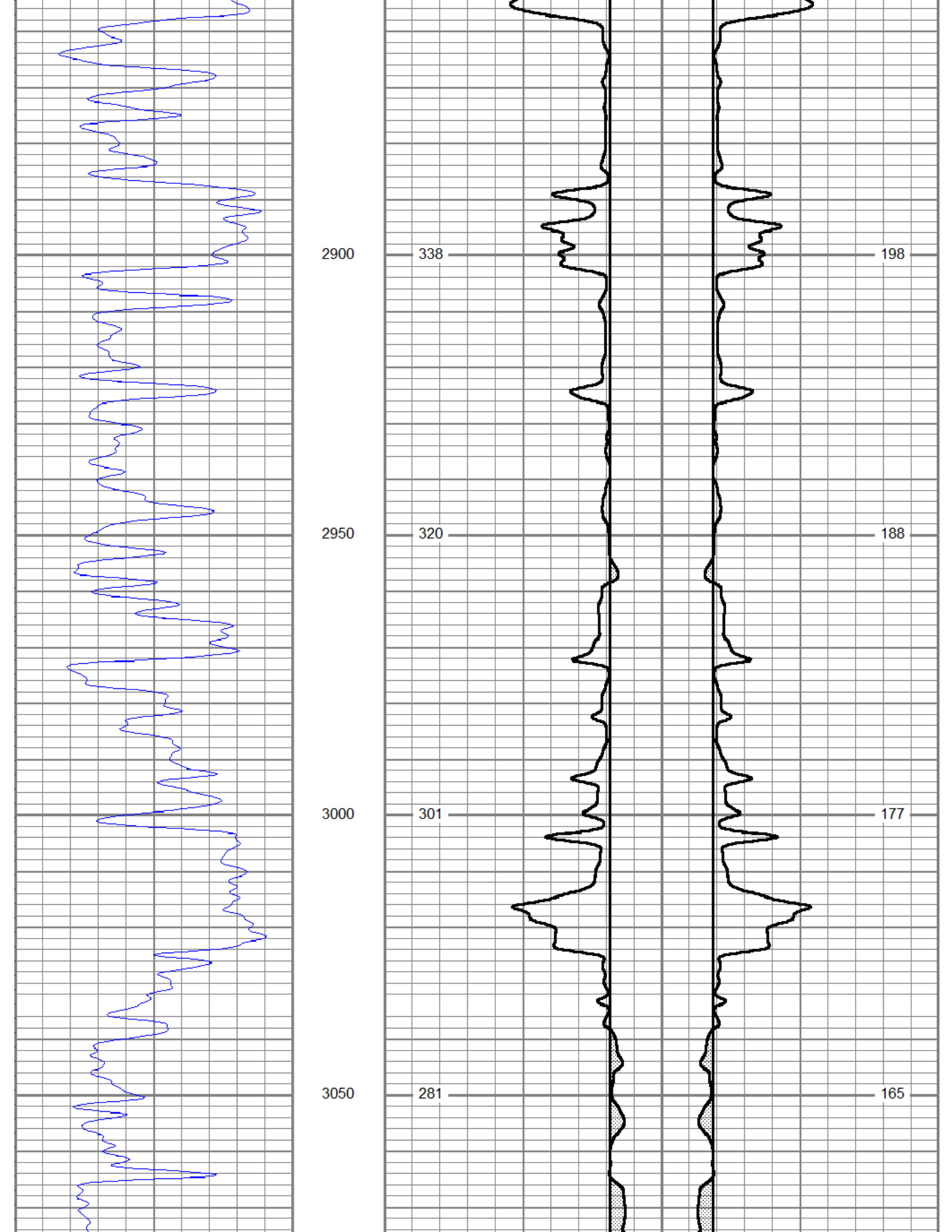
294

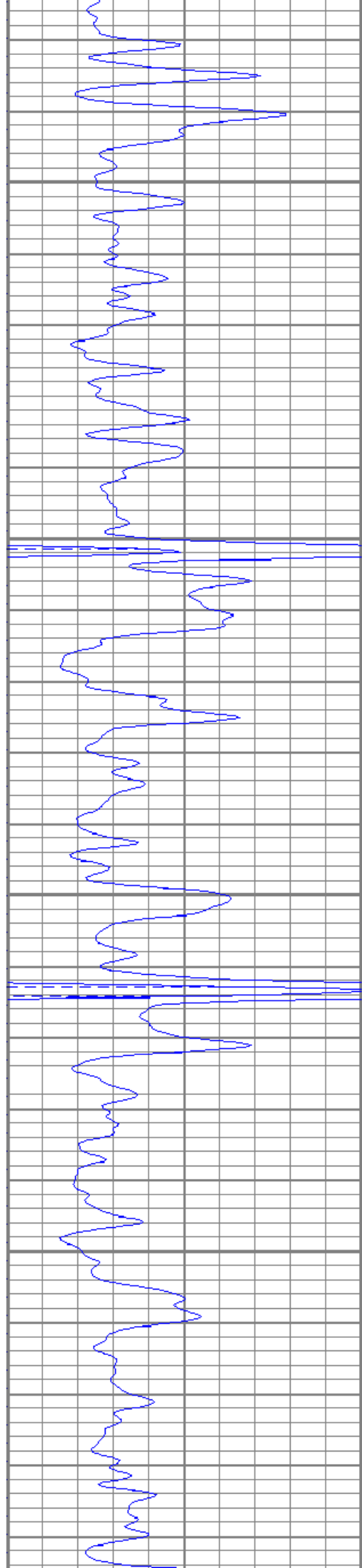
284

273

264







3100

265

158

3150

250

151

3200

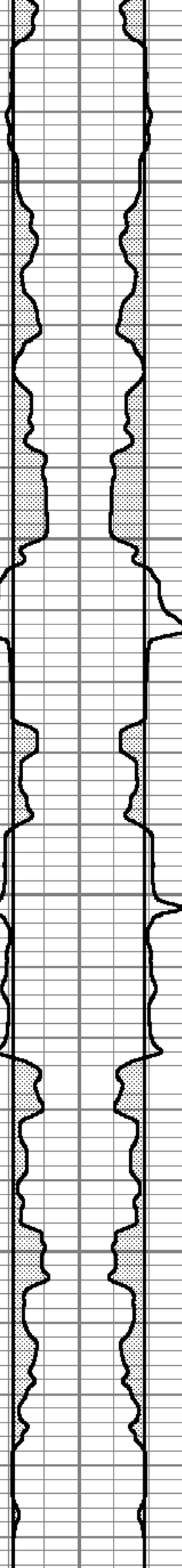
233

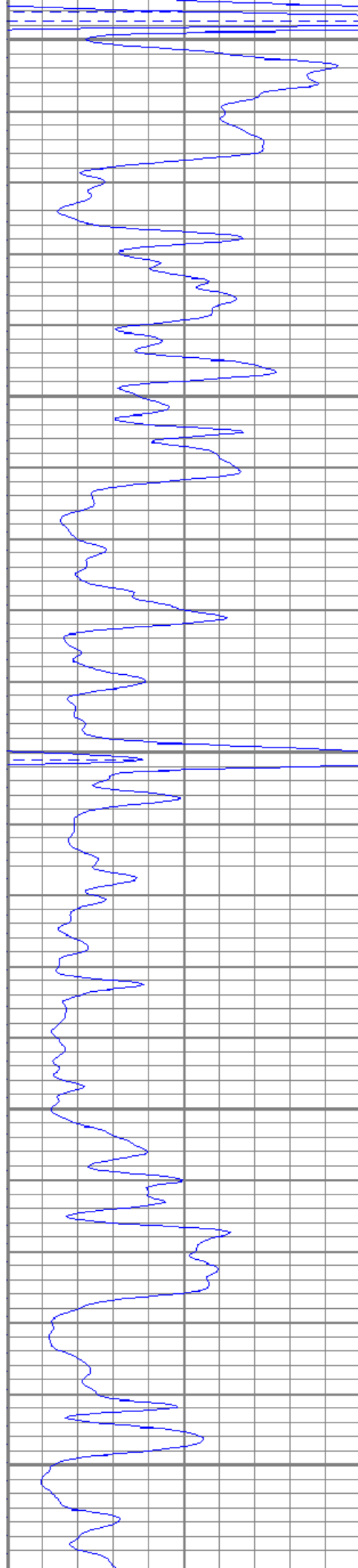
142

3250

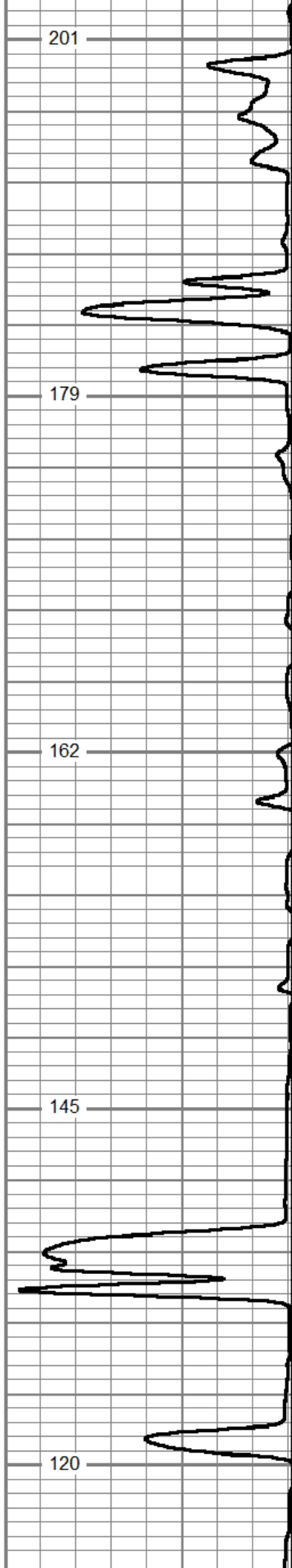
217

134

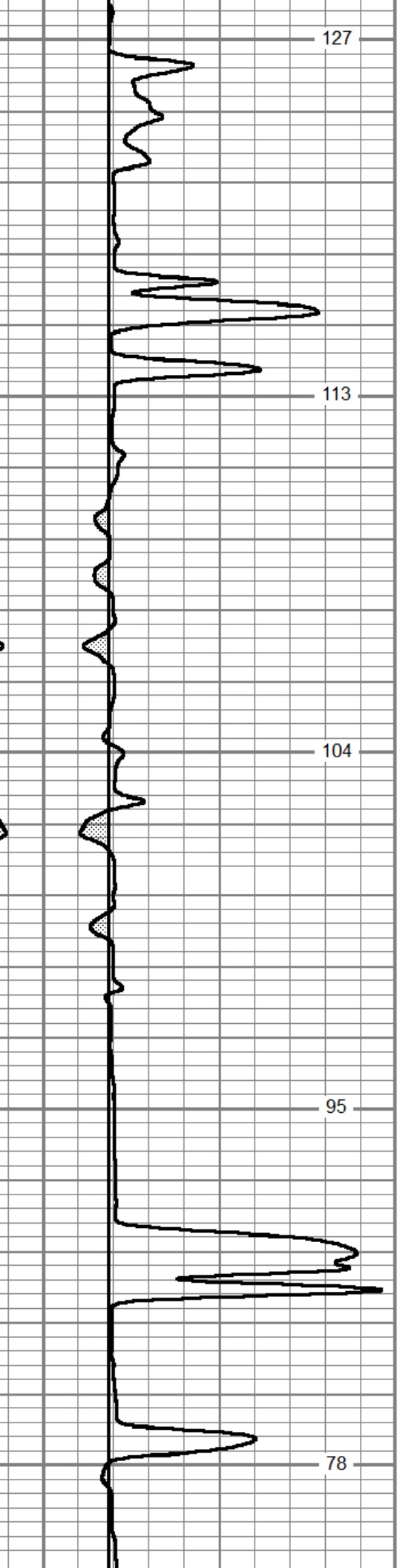




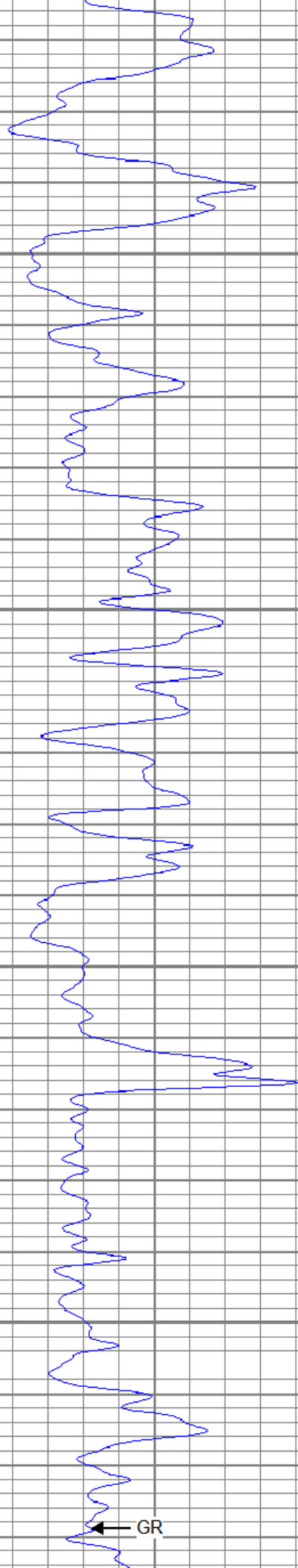
3300
3350
3400
3450
3500



201
179
162
145
120



127
113
104
95
78



3550

93

60

3600

72

47

3650

34

17

3700

17

TBHV

8

ABHV

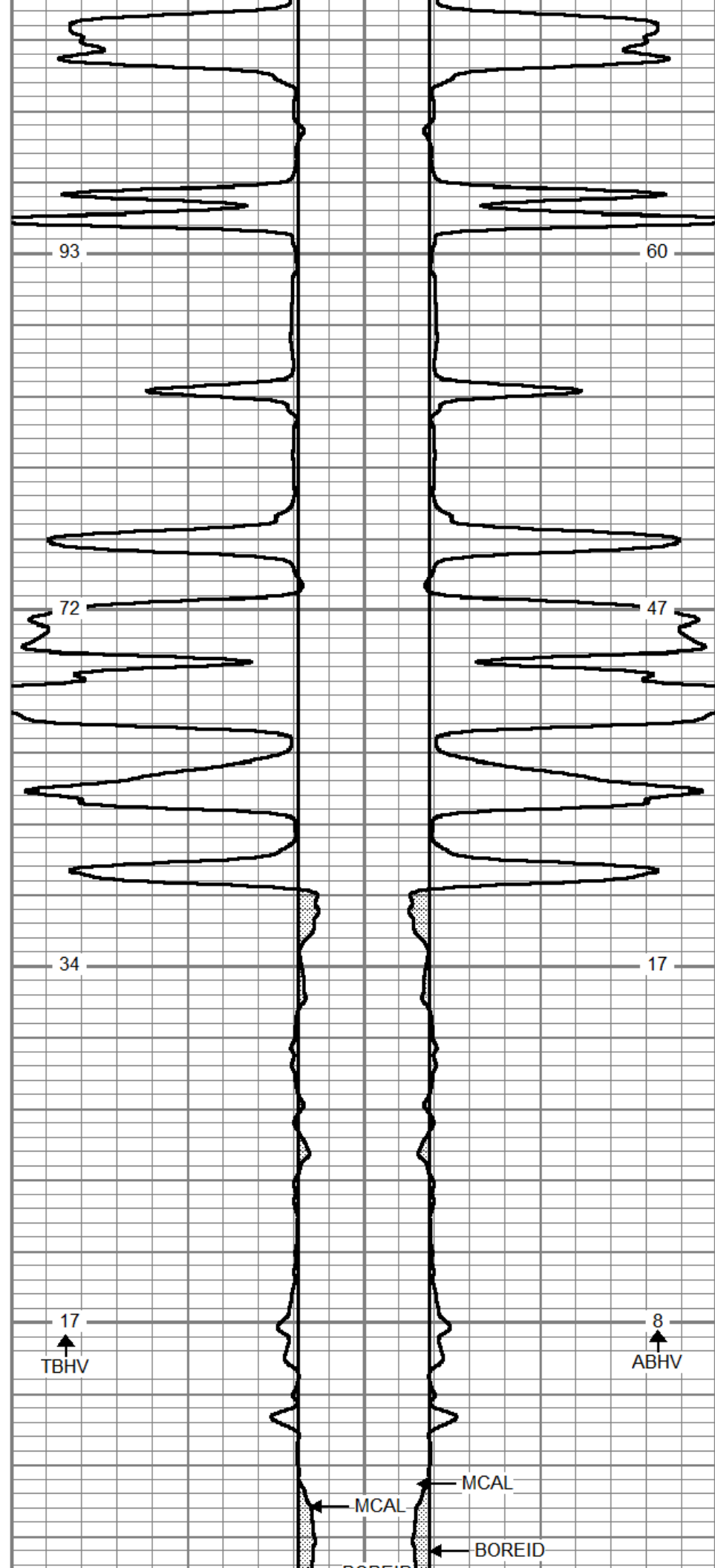
GR

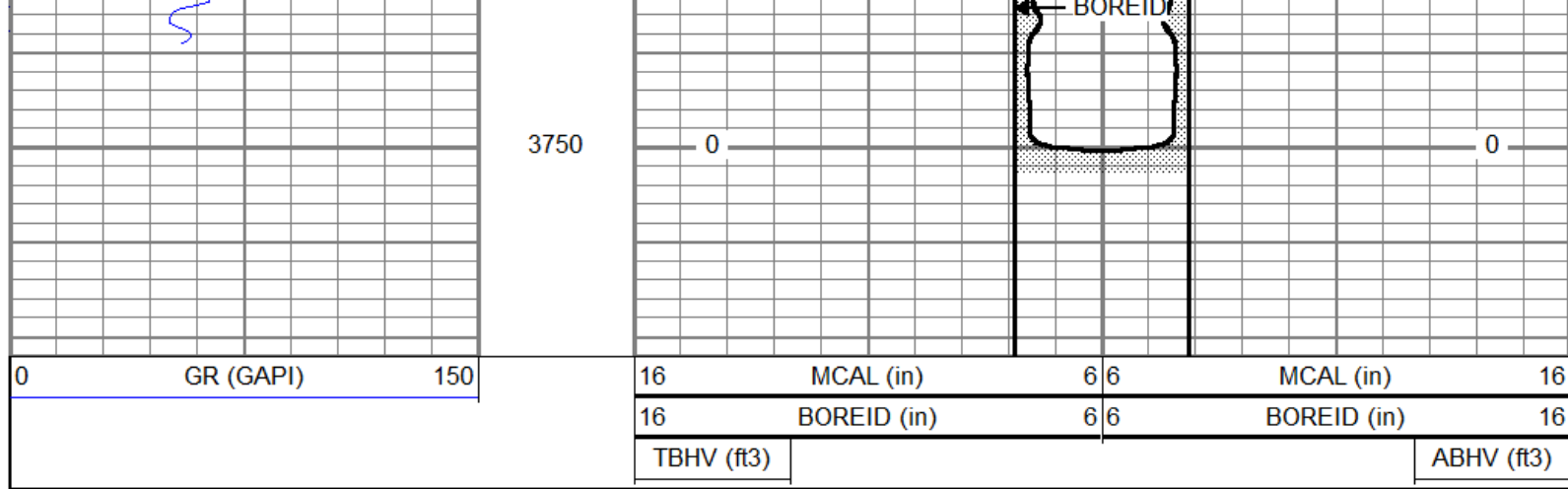
MCAL

MCAL

BOREID

BOREID





Calibration Report

Database File cepenny1-14-15-20oh.db
 Dataset Pathname pass5
 Dataset Creation Mon Mar 27 19:02:21 2017

Microlog Calibration Report

Serial-Model: 1600-Pengo
 Performed: Mon Mar 27 18:52:50 2017

	Readings			References			Results	
	Zero	Cal		Zero	Cal		m	b
Normal	-0.0014	0.5917	V	0.0000	10.0000	Ohm-m	16.8624	0.0233
Inverse	0.0007	0.7678	V	0.0000	8.2000	Ohm-m	10.6892	-0.0072
Caliper	1.3663	2.2079	V	7.3000	14.0000	in	7.9605	-3.5761

Gamma Ray Calibration Report

Serial Number: 804
 Tool Model: 2.75POH
 Performed: Mon Feb 04 09:07:46 2013

Calibrator Value: 1.0 GAPI

Background Reading: 0.0 cps
 Calibrator Reading: 1.0 cps

Sensitivity: 0.6000 GAPI/cps

Sensor	Offset (ft)	Schematic	Description	Length (ft)	O.D. (in)	Weight (lb)
GR	30.55		GR-2.75POH (804) Probe	3.73	2.75	43.00
			10pin-Probe	0.89	3.50	20.00
MCAL	21.05		ML-Pengo (1600)	6.97	3.50	100.00
MI	21.05					
MN	21.05					
WVF4	13.79		SLT-G (372) Sonic	15.71	3.50	250.00
WVF3	12.79					
WVF2	9.79					
WVF1	8.79		CENT-OHshort Open Hole short centralizer	4.04	3.50	50.00

Dataset: cepenny1-14-15-20oh.db: field/well/run1/pass5
 Total length: 31.33 ft
 Total weight: 463.00 lb
 O.D.: 3.50 in