



MIDWEST SURVEYS
 LOGGING - PERFORATING - CONSULTING SERVICES
 P.O. Box 88, Osawatomie, KS 66084
 913 / 755 - 2128

GAMMA RAY / NEUTRON / CCL

File No. Company **Colt Energy, Inc.**

Well **Cobble No. - 18**

Field **Big Sandy**

County **Woodson** State **Kansas**

Location **165' FSL & 1415' FEL**

Other Services **SE-SW-SE**

Sec. 22 Twp. 28S Rge. 14E

Perforate **14E 941'**

Perforation Datum **GL**

Log Measured From **GL**

Drilling Measured From **GL**

Date **03-06-2017**

Run Number **One**

Depth Driller **1431.0**

Depth Logger **1389.2**

Bottom Logged Interval **1389.2**

Top Log Interval **20.0**

Fluid Level **Full**

Type Fluid	Water						
Density / Viscosity	NA						
Salinity - PPM Cl	NA						
Max Recorded Temp	NA						
Estimated Cement Top	0.0						
Equipment No.	104						
Location	Camalotone						
Revised By	John Anteman						
Wired By							
BOREHOLE RECORD							
NO	BIT	FROM	TO	SIZE	WT	FROM	TO
One	12.25"	0.0	42.0	8.925"	24.0	0.0	42.0
Two	6.75"	42.0	1431.0	4.507"	10.5	0.0	1395.0
					SR	AI	

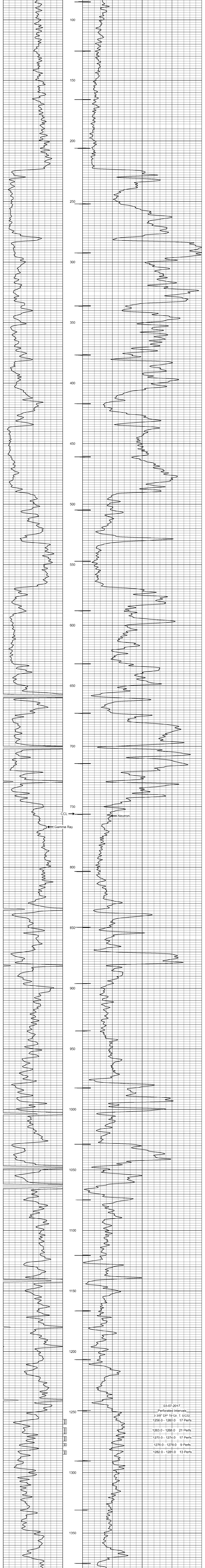
<<< Fold Here >>>

All interpretations are opinions based on inferences from electrical or other measurements and we cannot and do not guarantee the accuracy or correctness of any interpretation, and we shall not, except in the case of gross or willful negligence on our part, be liable or responsible for any loss, costs, damages, or expenses incurred or sustained by anyone resulting from any interpretation made by any of our officers, agents or employees. These interpretations are also subject to our general terms and conditions set out in our current Price Schedule.

Comments

Drilling Contractor :
 Bar Drilling, LLC.

Database File: cobble 16.db
 Dataset Pathname: pass 1
 Presentation Format: gr-n-cl
 Dataset Creation: Mon Mar 06 11:18:47 2017 by Log SCH 111116
 Charted by: Depth in Feet scaled 1:240



03-07-2017
 Perforated Intervals:
 3 3/8" DP 19 Gr. T. ECG:
 1256.0 - 1260.0 17 Perfs
 1263.0 - 1268.0 21 Perfs
 1270.0 - 1274.0 17 Perfs
 1276.0 - 1278.0 9 Perfs
 1282.0 - 1285.0 13 Perfs