



DUAL INDUCTION LOG

Company STRATAKAN EXPLORATION, INC
 Well ANDREWS B #22-1
 Field KENILWORTH
 County STAFFORD
 State KANSAS

Company STRATAKAN EXPLORATION, INC.
 Well ANDREWS B #22-1
 Field KENILWORTH
 County STAFFORD State KANSAS

Location: API #: 15-185-23967-00-00
 950' FNL & 2050' FWL
 SEC 22 TWP 22S RGE 13W
 Permanent Datum GROUND LEVEL Elevation 1890'
 Log Measured From KELLY BUSHING
 Drilling Measured From KELLY BUSHING
 Other Services
 CNL/CDL
 MEL
 Elevation
 K.B. 1895'
 D.F. N/A
 G.L. 1890'

Date	10/8/2016
Run Number	ONE
Depth Driller	4010'
Depth Logger	4009'
Bottom Logged Interval	4008'
Top Log Interval	650'
Casing Driller	8.625" @ 692'
Casing Logger	690'
Bit Size	7.875"
Type Fluid in Hole	CHEMICAL
Salinity, ppm CL	7000
Density / Viscosity	9.1 49
pH / Fluid Loss	9.0 9.6
Source of Sample	FLOWLINE
Rm @ Meas. Temp	0.67 @ 62
Rmt @ Meas. Temp	0.50 @ 62
Rmc @ Meas. Temp	0.90 @ 62
Source of Rmf / Rmc	CHARTS
Rm @ BHT	0.36 @ 116
Operating Rig Time	2 1/2 HOURS
Max Rec. Temp. F	116 DEG F
Equipment Number	108
Location	COLBY
Recorded By	T. MARTIN
Witnessed By	JASON ALM

<<< Fold Here >>>

All interpretations are opinions based on inferences from electrical or other measurements and Pioneer Wireline Services, LLC cannot and does not guarantee the accuracy or correctness of any interpretation, and Pioneer Wireline Services, LLC will not be liable or responsible for any loss, costs, damages, or expenses incurred or sustained by anyone resulting from any interpretation made by any of our officers, agents or employees.

Comments

N/A DENOTES NOT AVAILABLE OR NON-APPLICABLE.

GREAT BEND, S TO 120 RD,
 1/2 E, S INTO

Log Measured From: KELLY BUSHING 5 Ft. Above Permanent Datum

THANK YOU FOR USING PIONEER ENERGY SERVICES
www.pioneerenergy.com 785-625-3858

Your Pioneer Energy Services Crew	This Log Record Was Witnessed By
Engineer: T. MARTIN	Primary Witness: JASON ALM
Operator:	Secondary Witness:
Operator:	Secondary Witness:
Operator:	Secondary Witness:

Log Variables

DatabaseC:\ProgramData\Warrior\Data\stratakan_andrews_b_#22-1.db
 Dataset field/well/stkml/pass3.1/_vars_

Top - Bottom

A	BOREID in	BOTTEMP degF	CASEOD in	CASETHCK in	FLUIDDEN g/cc	M	MATRXDEN g/cc
1	7.875	116	5.5	0	1	2	2.71
NPORSEL	PERFS	SNDERR mmho/m	SNDERRM mmho/m	SPSHIFT mV	SRFTEMP degF	SZCOR	TDEPTH ft
Limestone	0	0	0	-320	50	Off	4009

Sensor	Offset (ft)	Schematic	Description	Length (ft)	O.D. (in)	Weight (lb)
GR	40.58		GR-M&W (89-M&W)	3.00	3.50	50.00
CNLSC CNSSC	37.48 36.73		CNT-M&W (tk10-MW)	5.50	3.50	100.00
LSD DCAL SSD	28.43 28.42 27.93		CDL-M&W (71-914)	8.50	4.00	250.00
MCAL MI MN	19.83 19.83 19.83		ML-PSI STKBL ML (PSI-02) Stackable Microlog Tools	7.58	4.00	65.00
RLL3 RLL3F	15.80 15.79					
CILD	8.00		DIL-M&W (1987)	18.50	3.50	220.00

CILM

4.70

SP

0.20

Dataset: stratakan_andrews_b_#22-1.db: field/well/stkml/pass3.1
 Total length: 43.08 ft
 Total weight: 685.00 lb
 O.D.: 4.00 in

PIONEER

Pioneer Energy Services

2" SCALE RESISTIVITY

MAIN PASS

Database File stratakan_andrews_b_#22-1.db
 Dataset Pathname stkml/pass3.2
 Presentation Format dil2in
 Dataset Creation Sat Oct 08 02:32:28 2016
 Charted by Depth in Feet scaled 1:600

0 GAMMA RAY (GAPI) 150

1000 CONDUCTIVITY (mmho/m) 0

SHALLOW RESISTIVITY

0 (Ohm-m) 50

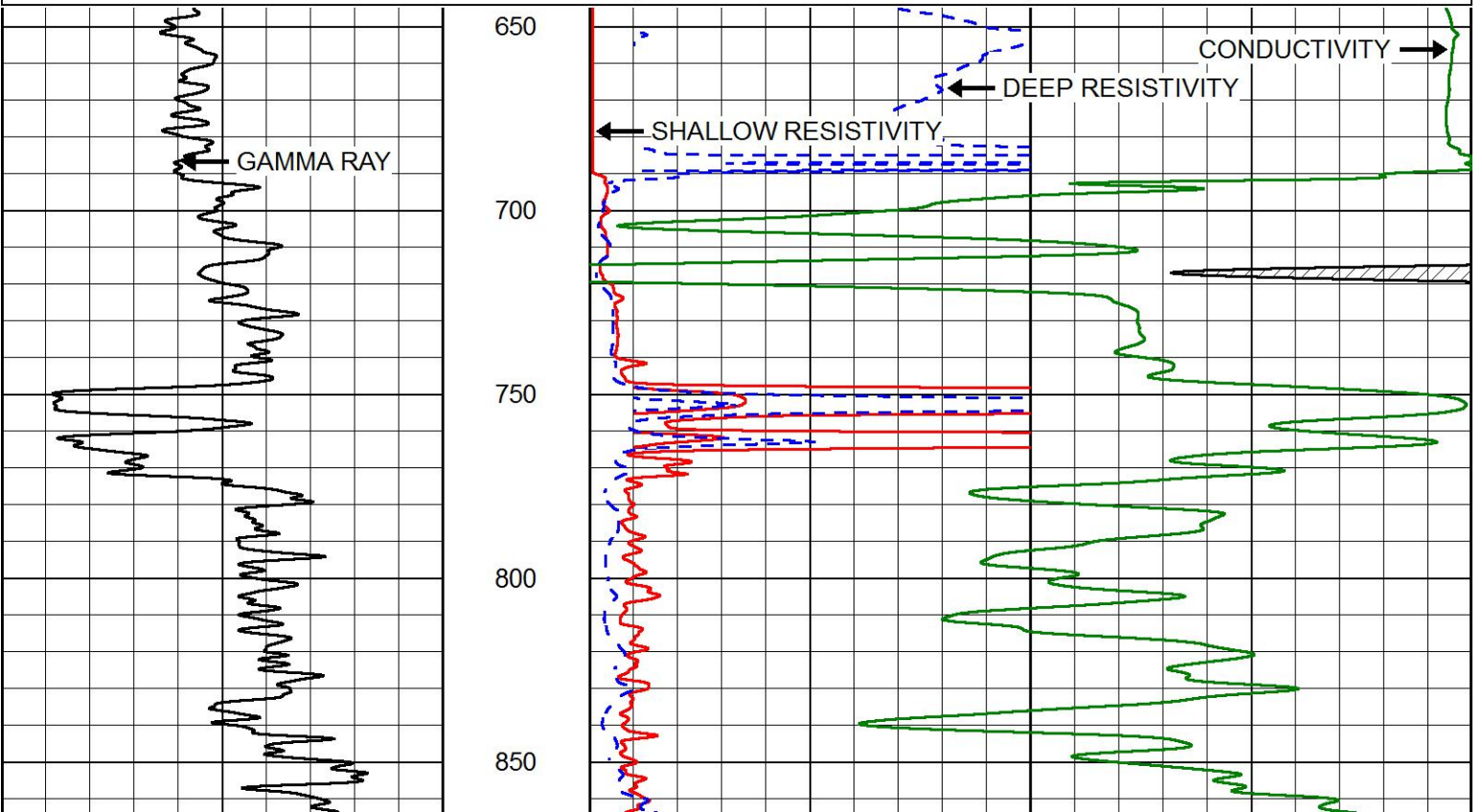
0 DEEP RESISTIVITY (Ohm-m) 50

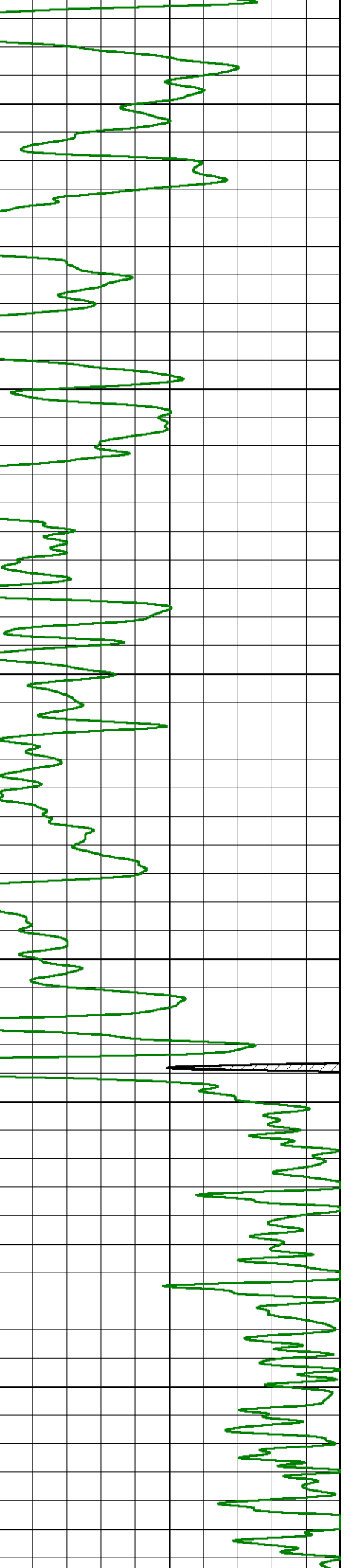
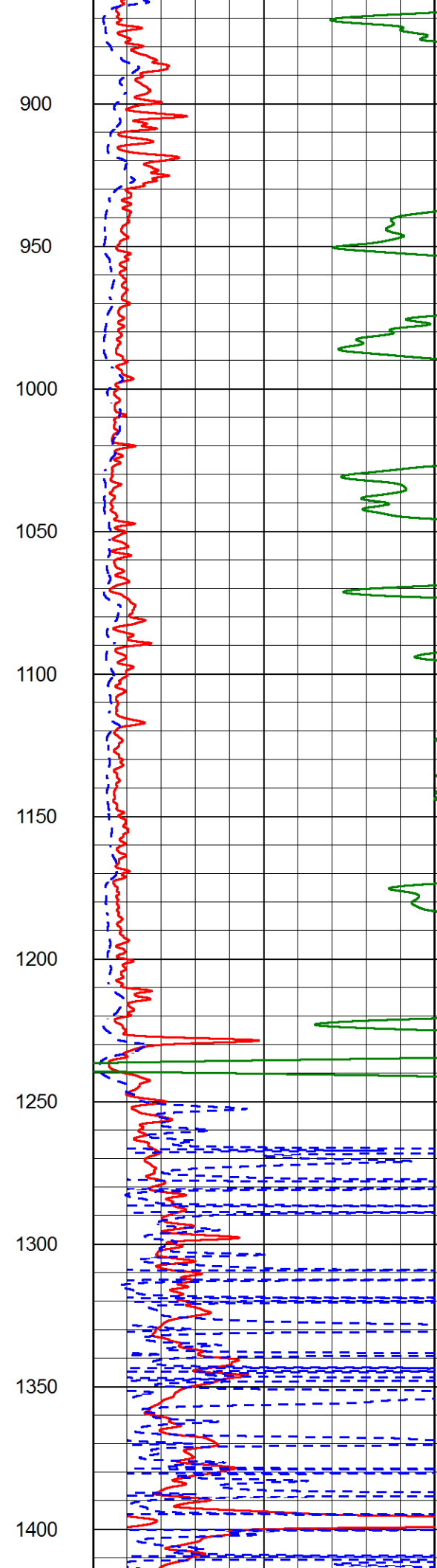
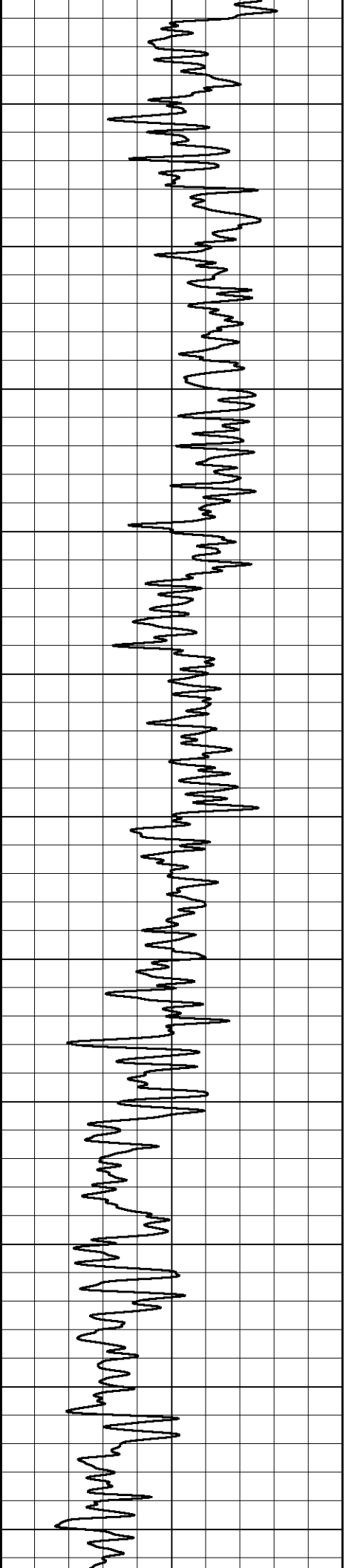
SHALLOW RESISTIVITY

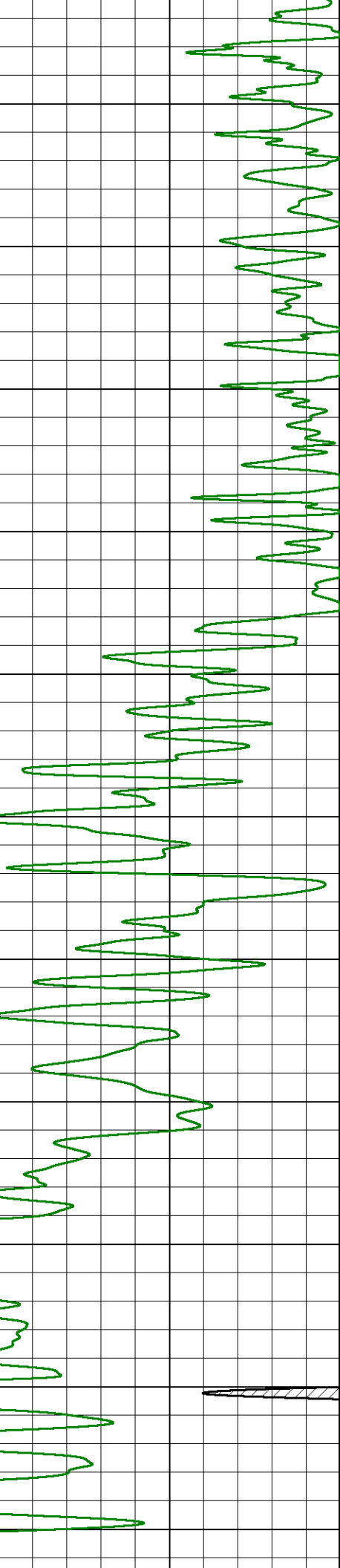
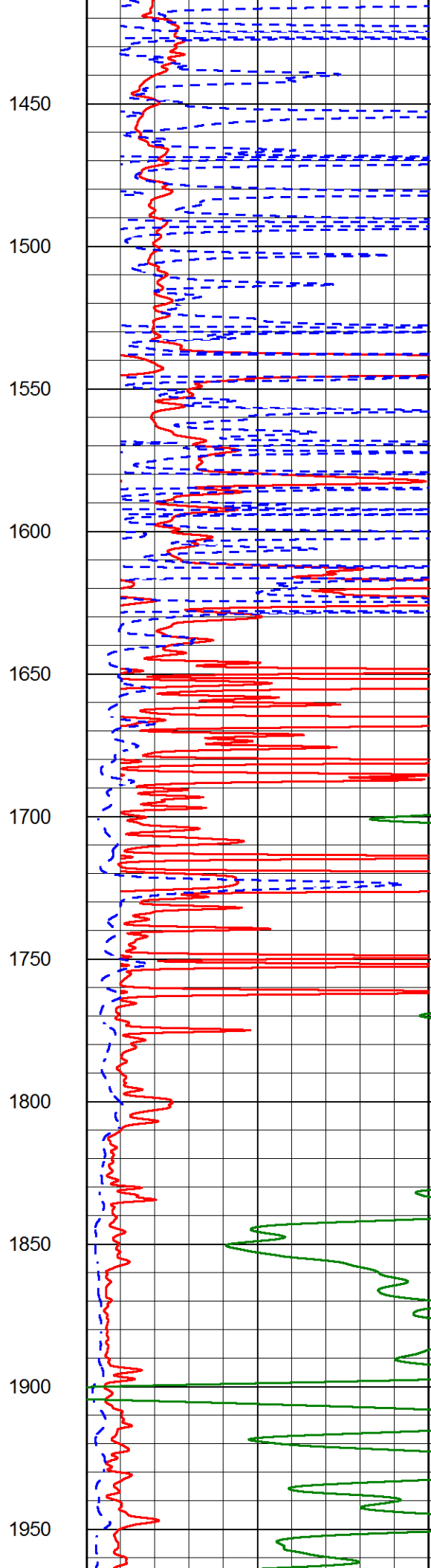
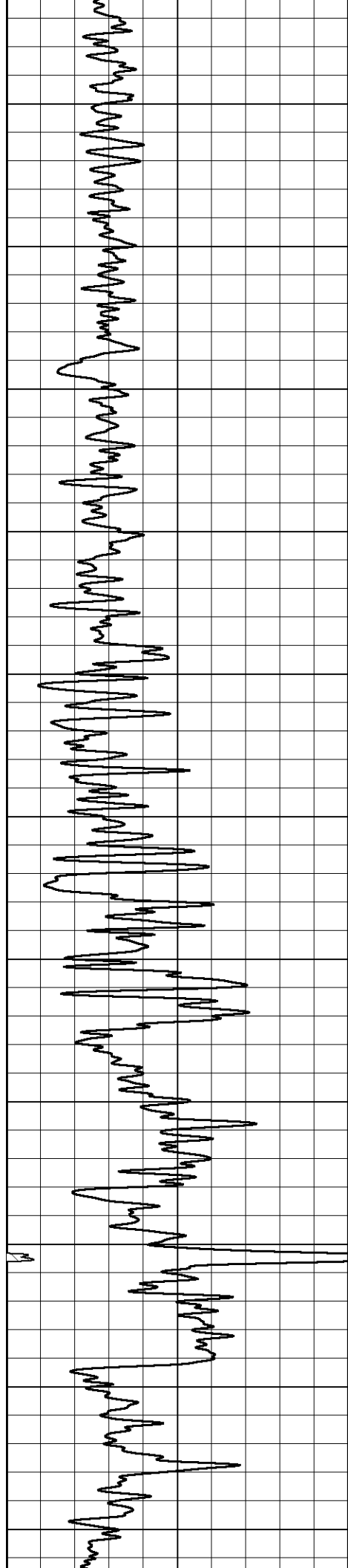
50 (Ohm-m) 500

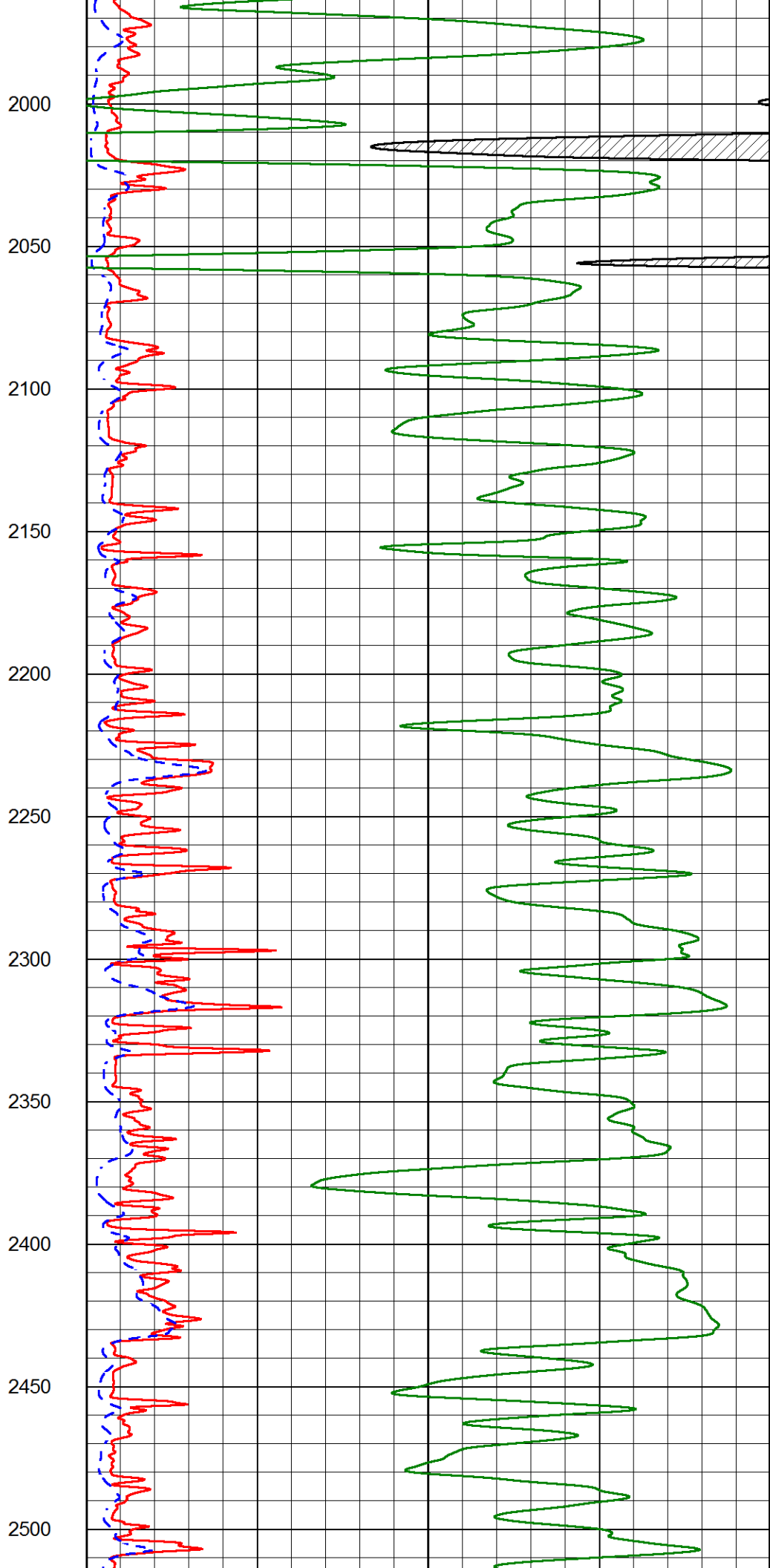
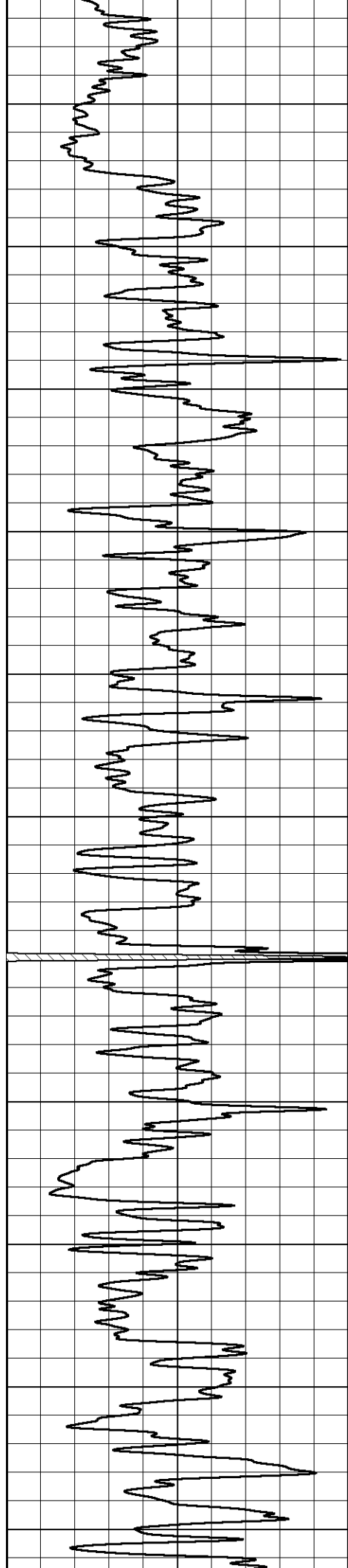
DEEP RESISTIVITY

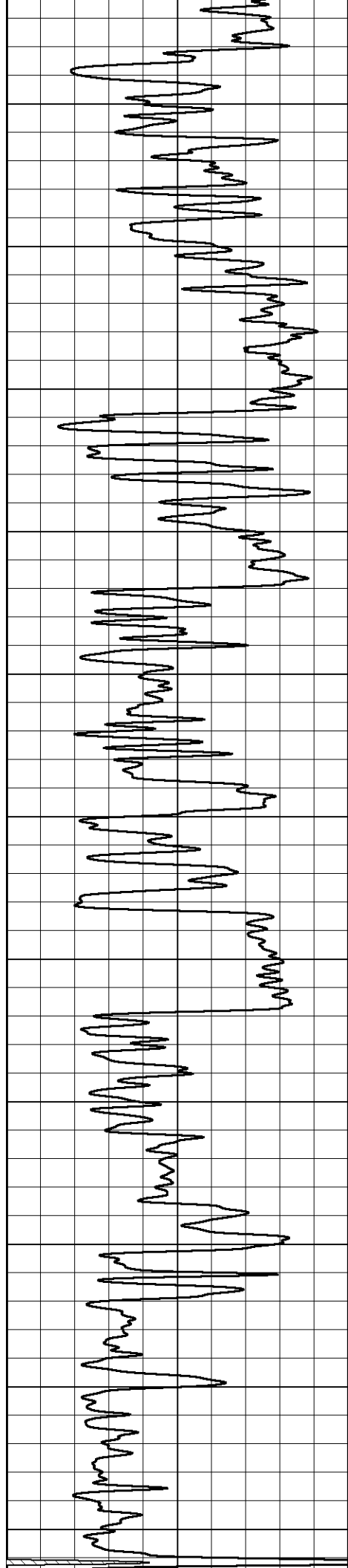
50 (Ohm-m) 500



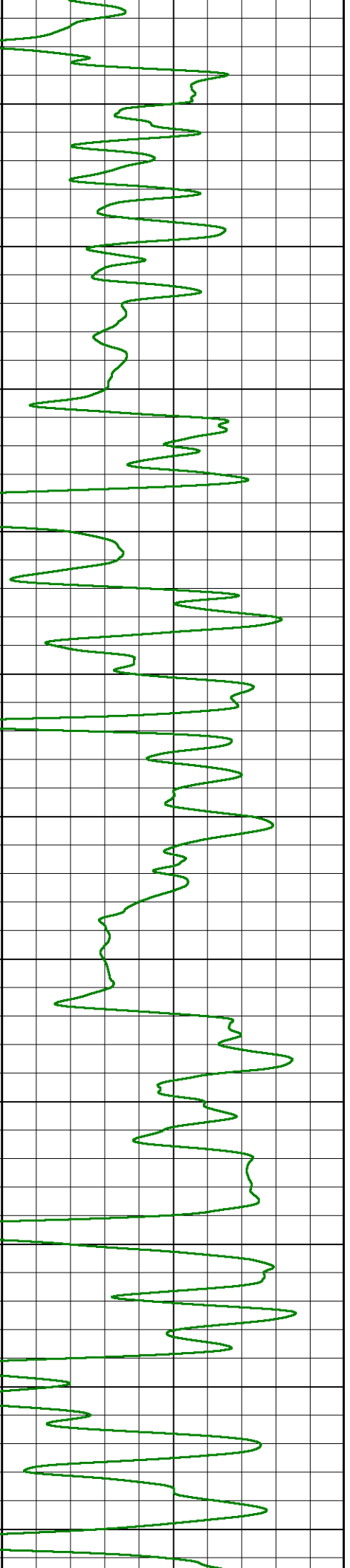
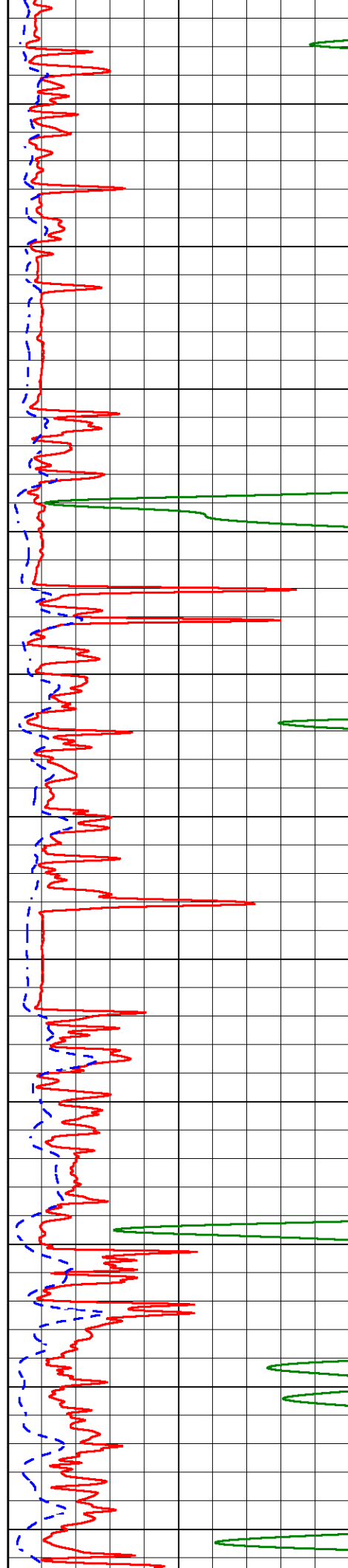


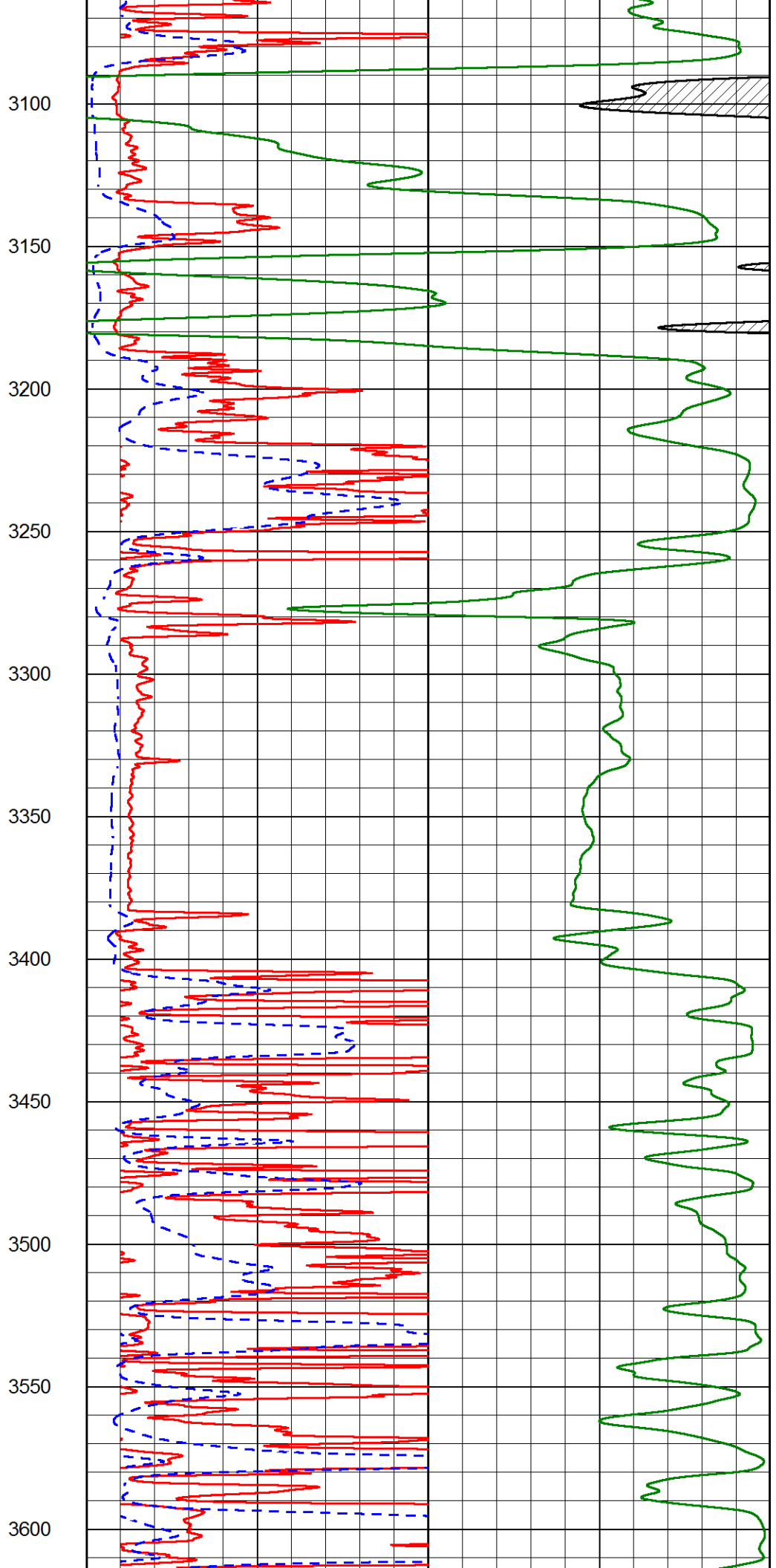
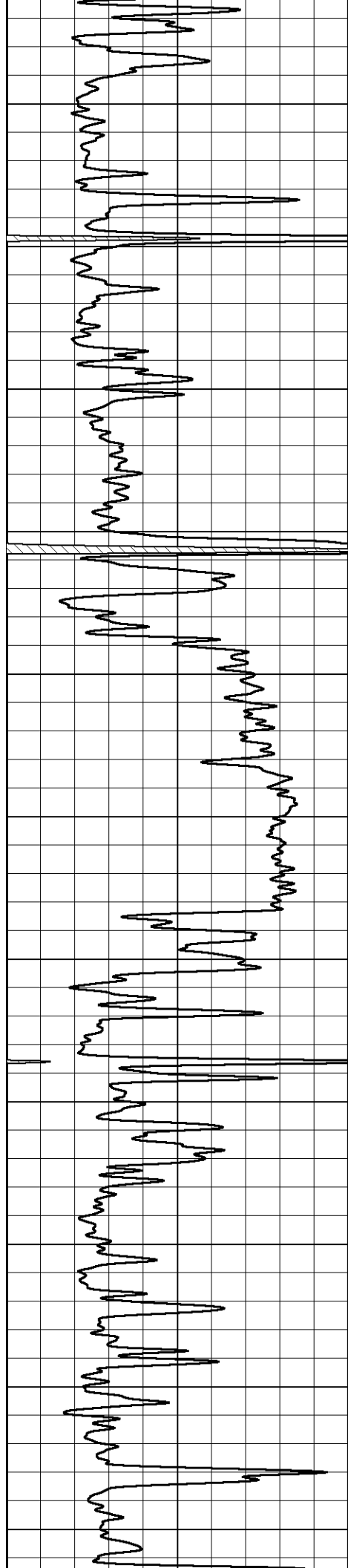


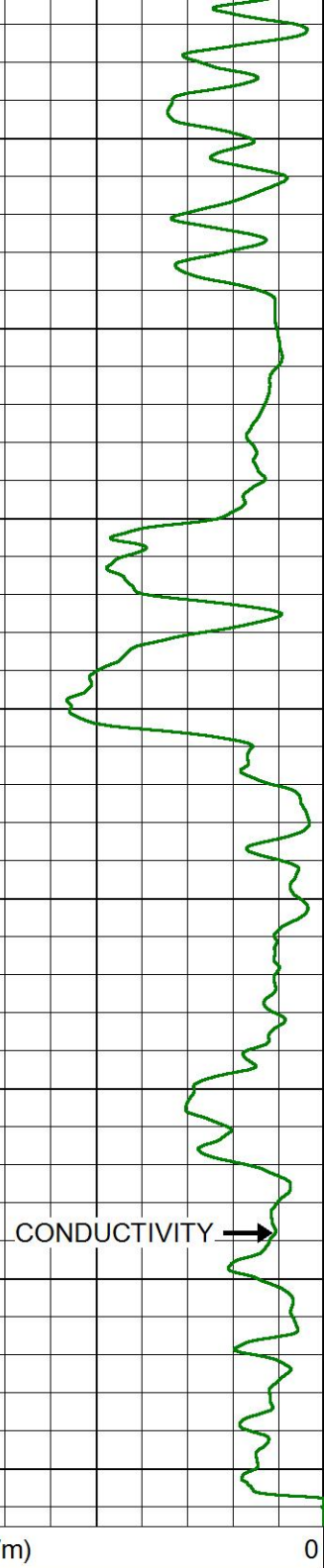
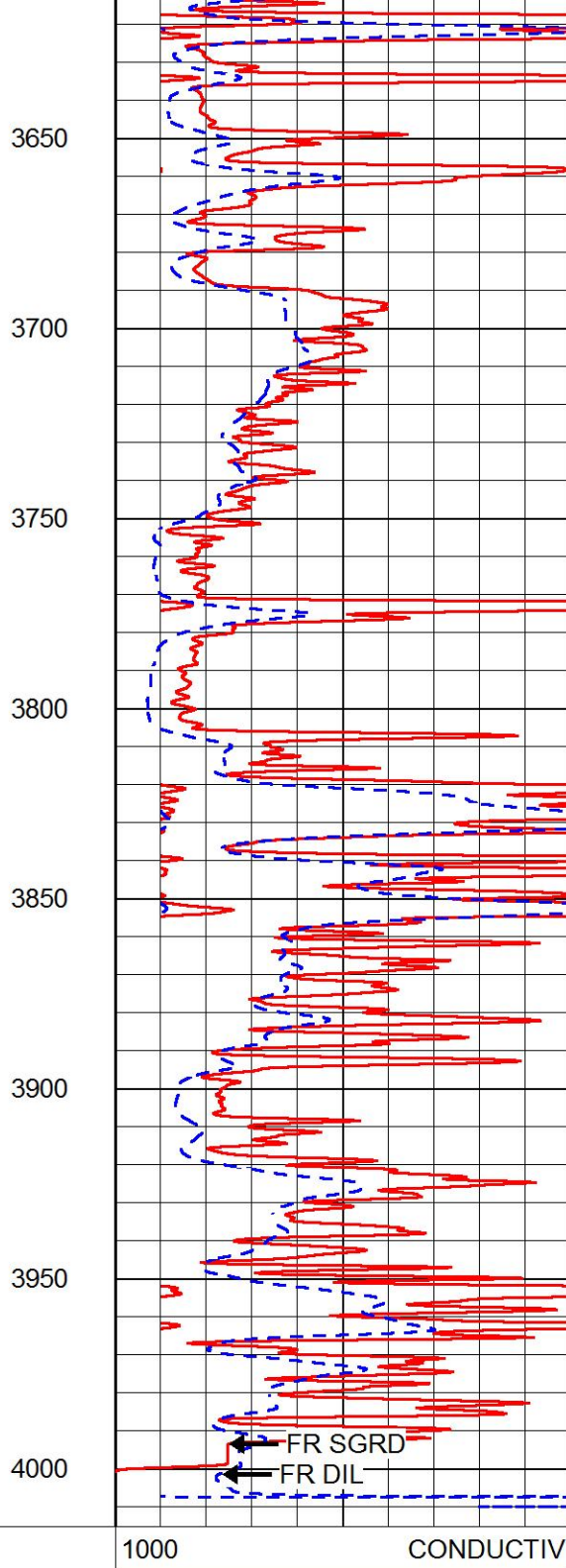
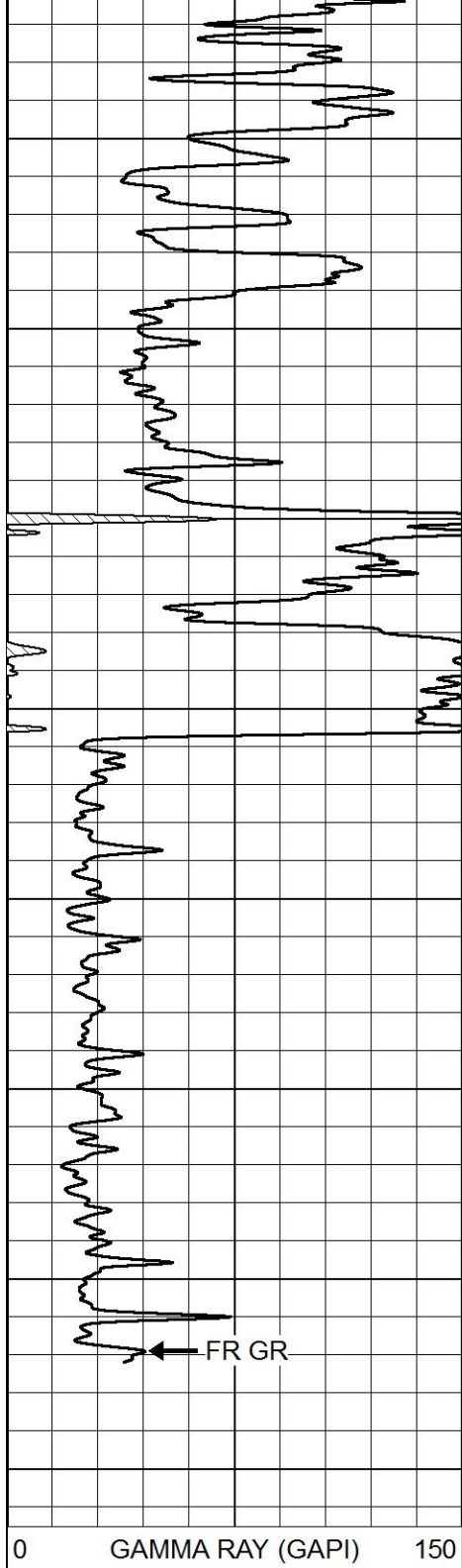




2550
2600
2650
2700
2750
2800
2850
2900
2950
3000
3050







0 GAMMA RAY (GAPI) 150

1000 CONDUCTIVITY (mmho/m) 0

SHALLOW RESISTIVITY		
0	(Ohm-m)	50
DEEP RESISTIVITY (Ohm-m) 50		
SHALLOW RESISTIVITY		
50	(Ohm-m)	500
DEEP RESISTIVITY		
50	(Ohm-m)	500

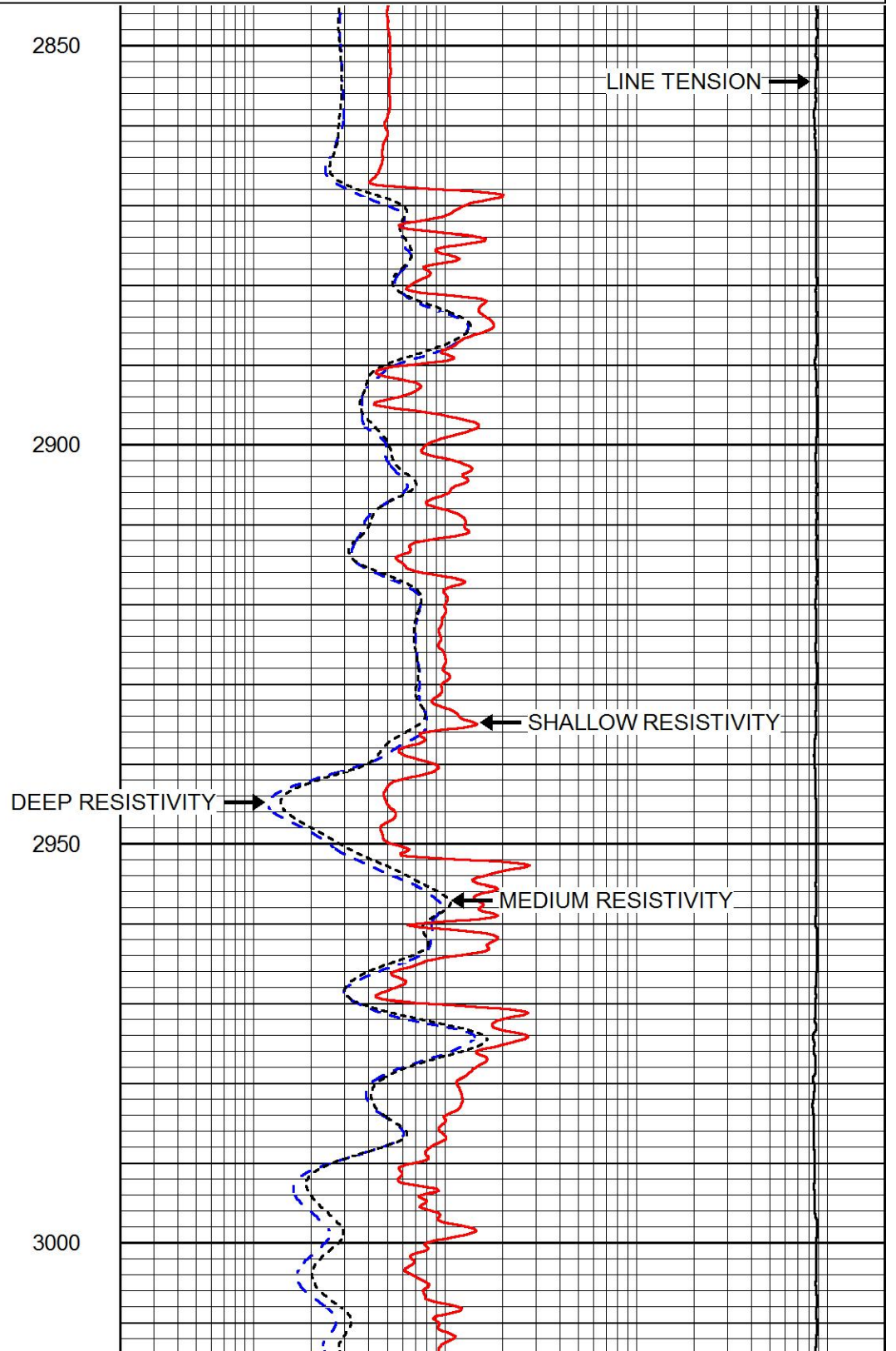
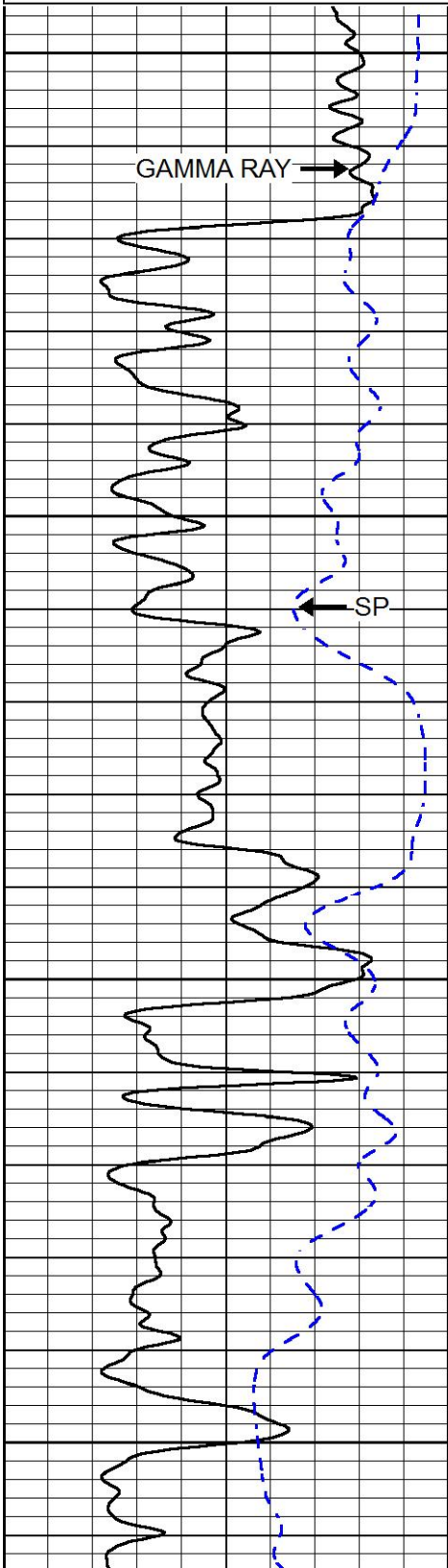


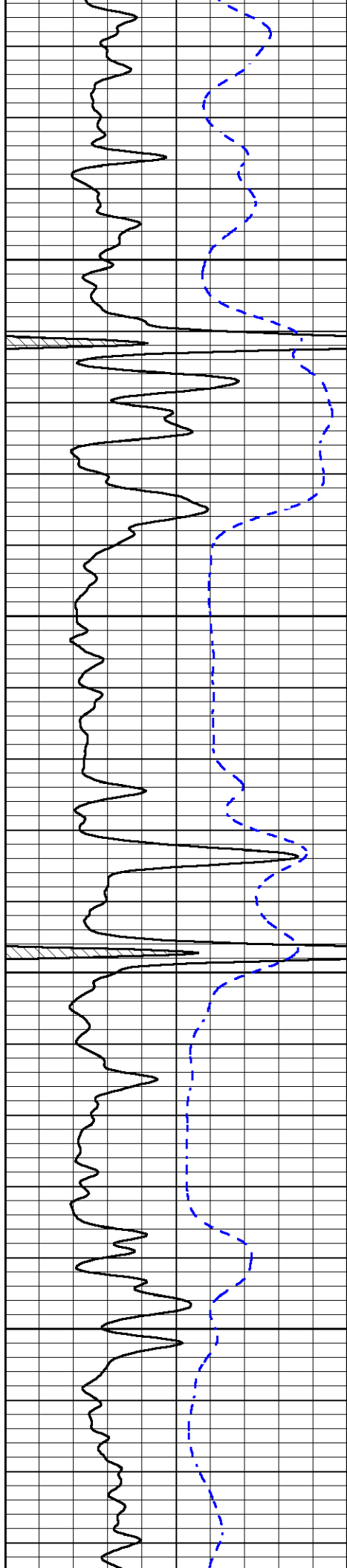
MAIN PASS

Database File stratakan_andrews_b_#22-1.db
Dataset Pathname stkml/pass3.1
Presentation Format dil
Dataset Creation Sat Oct 08 02:32:42 2016
Charted by Depth in Feet scaled 1:240

0	GAMMA RAY (GAPI)	150
-200	SP (mV)	0

0.2	DEEP RESISTIVITY (Ohm-m)	2000
0.2	MEDIUM RESISTIVITY (Ohm-m)	2000
0.2	SHALLOW RESISTIVITY (Ohm-m)	2000
15000	LINE TENSION (lb)	0



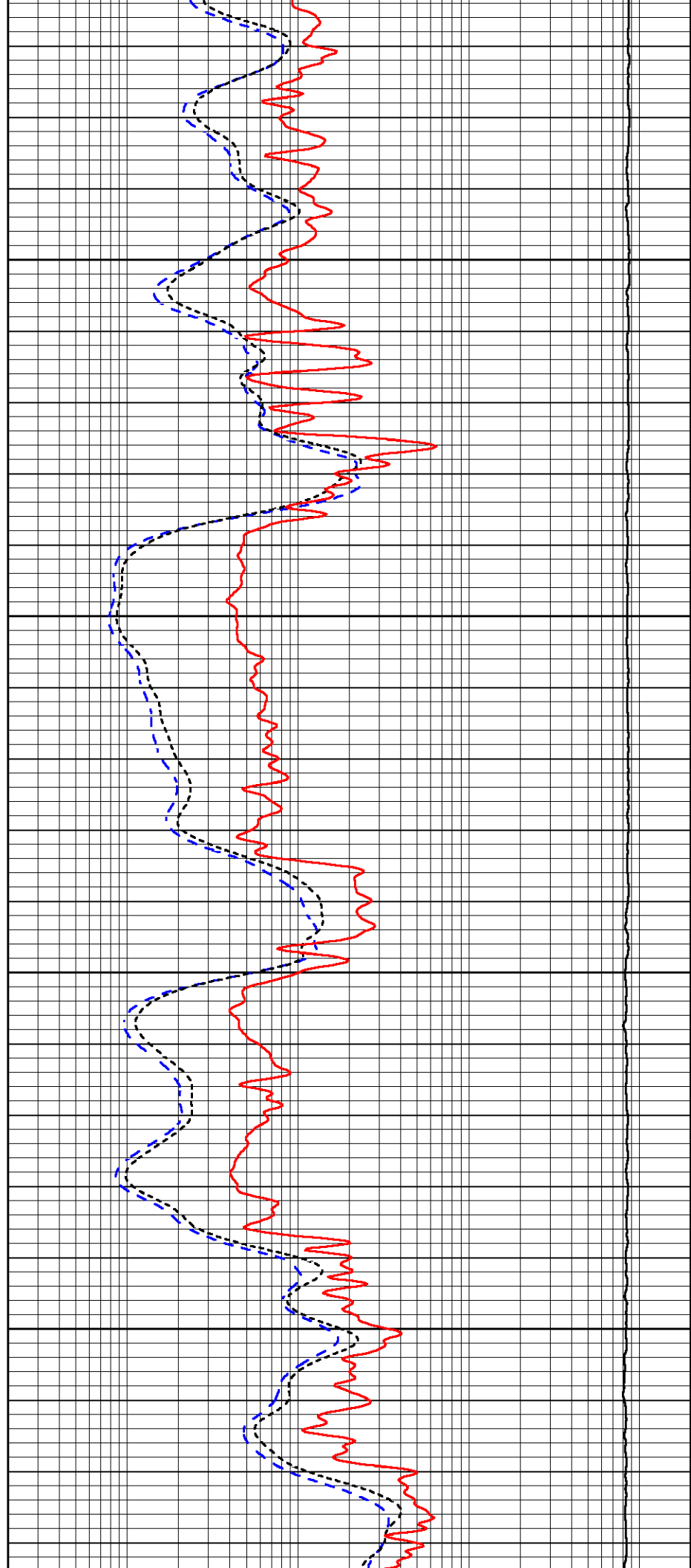


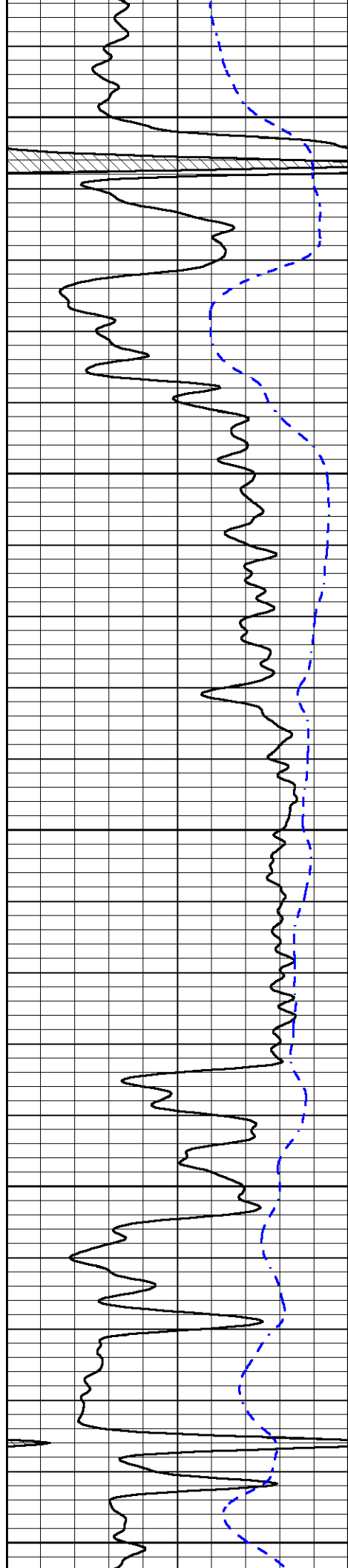
3050

3100

3150

3200





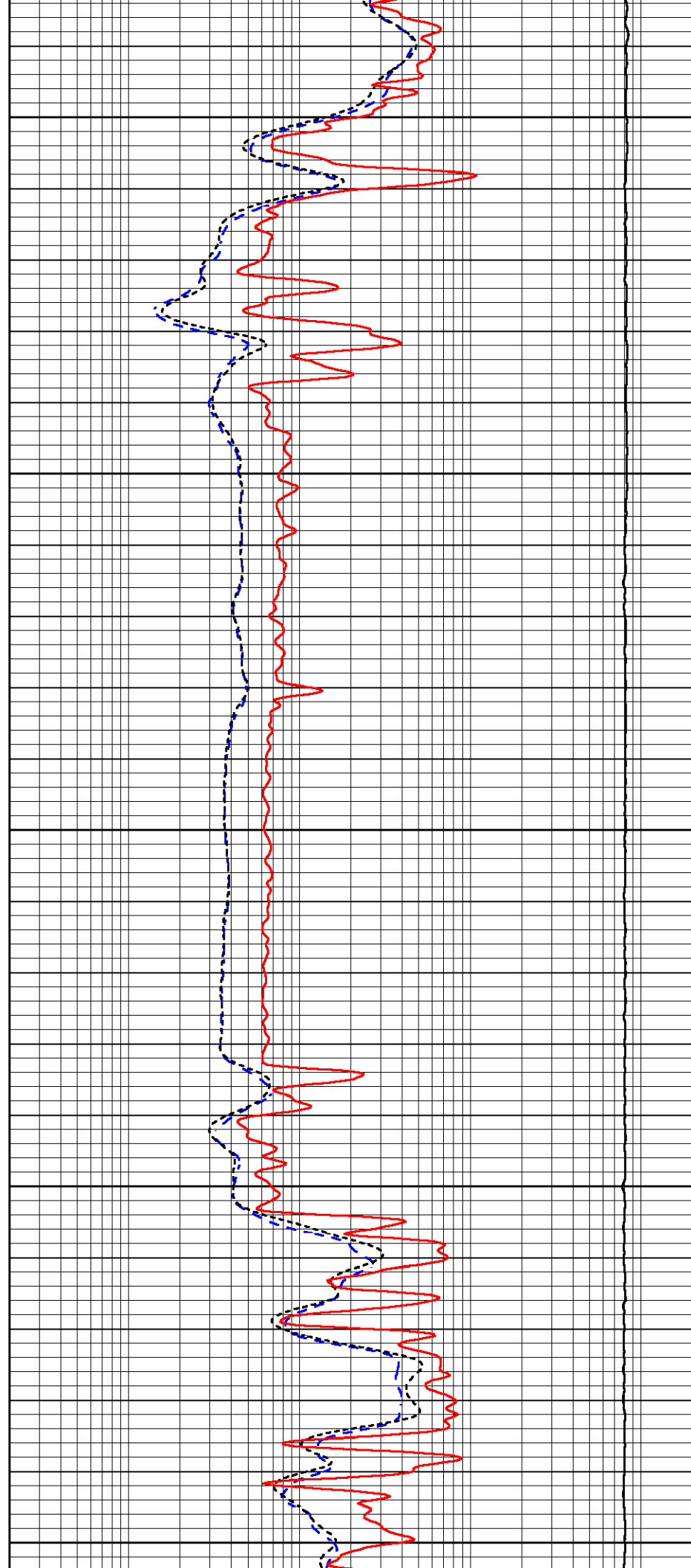
3250

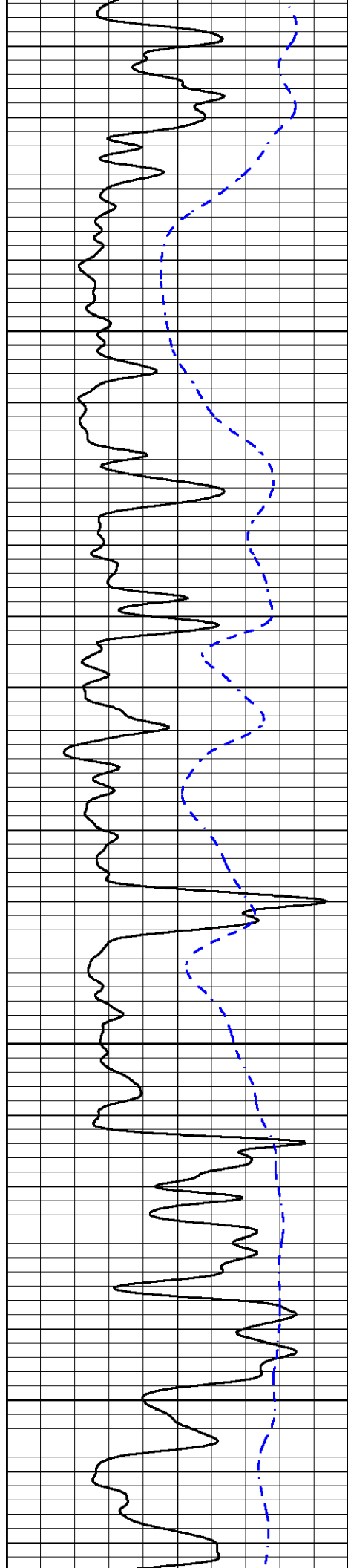
3300

3350

3400

3450



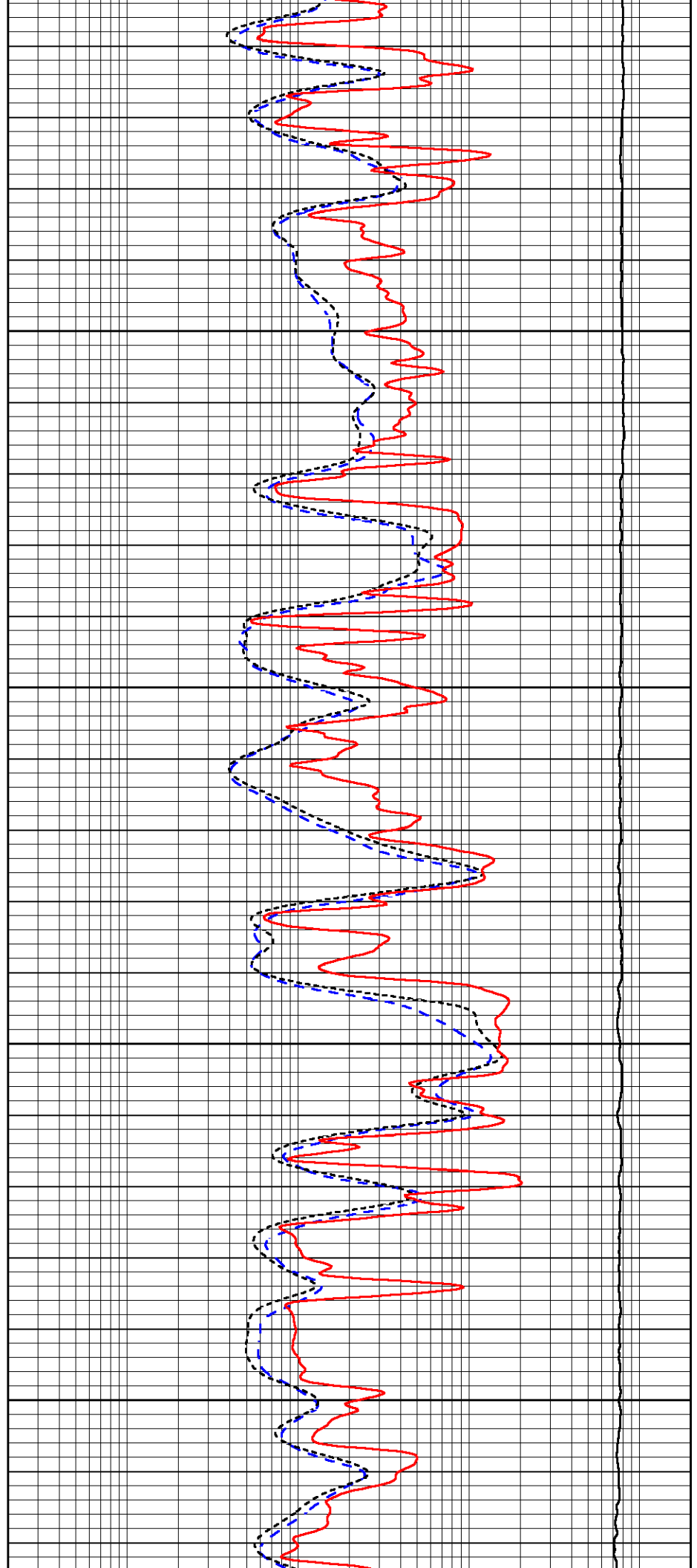


3500

3550

3600

3650

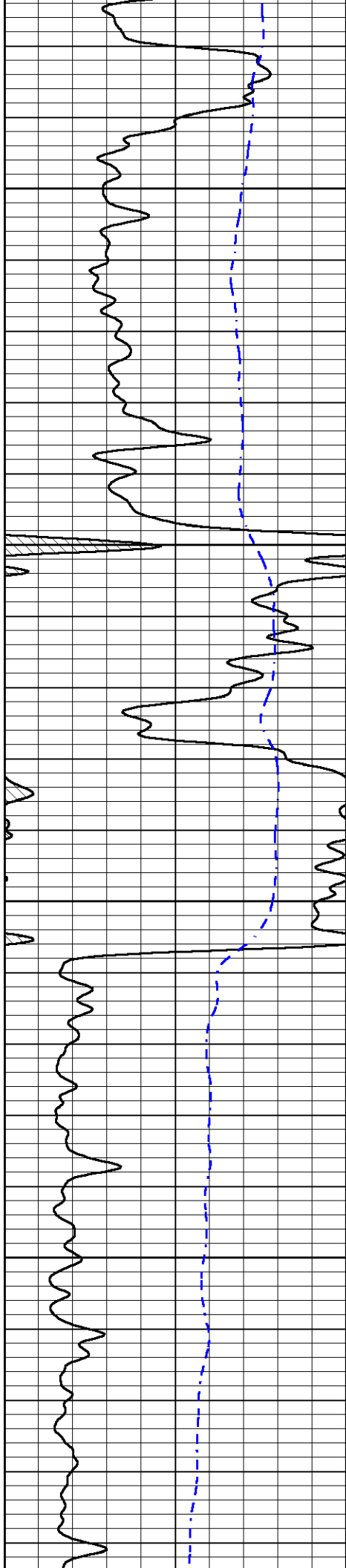


3500

3550

3600

3650

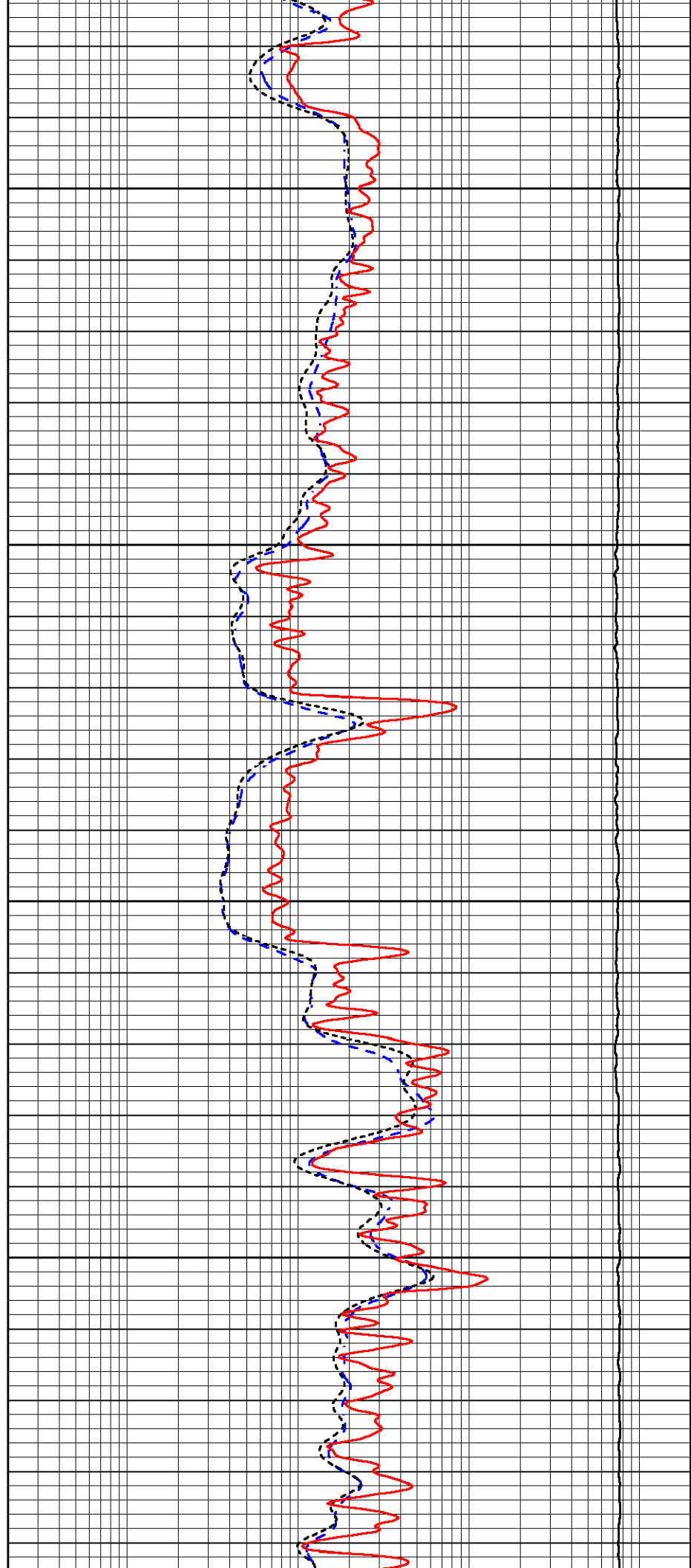


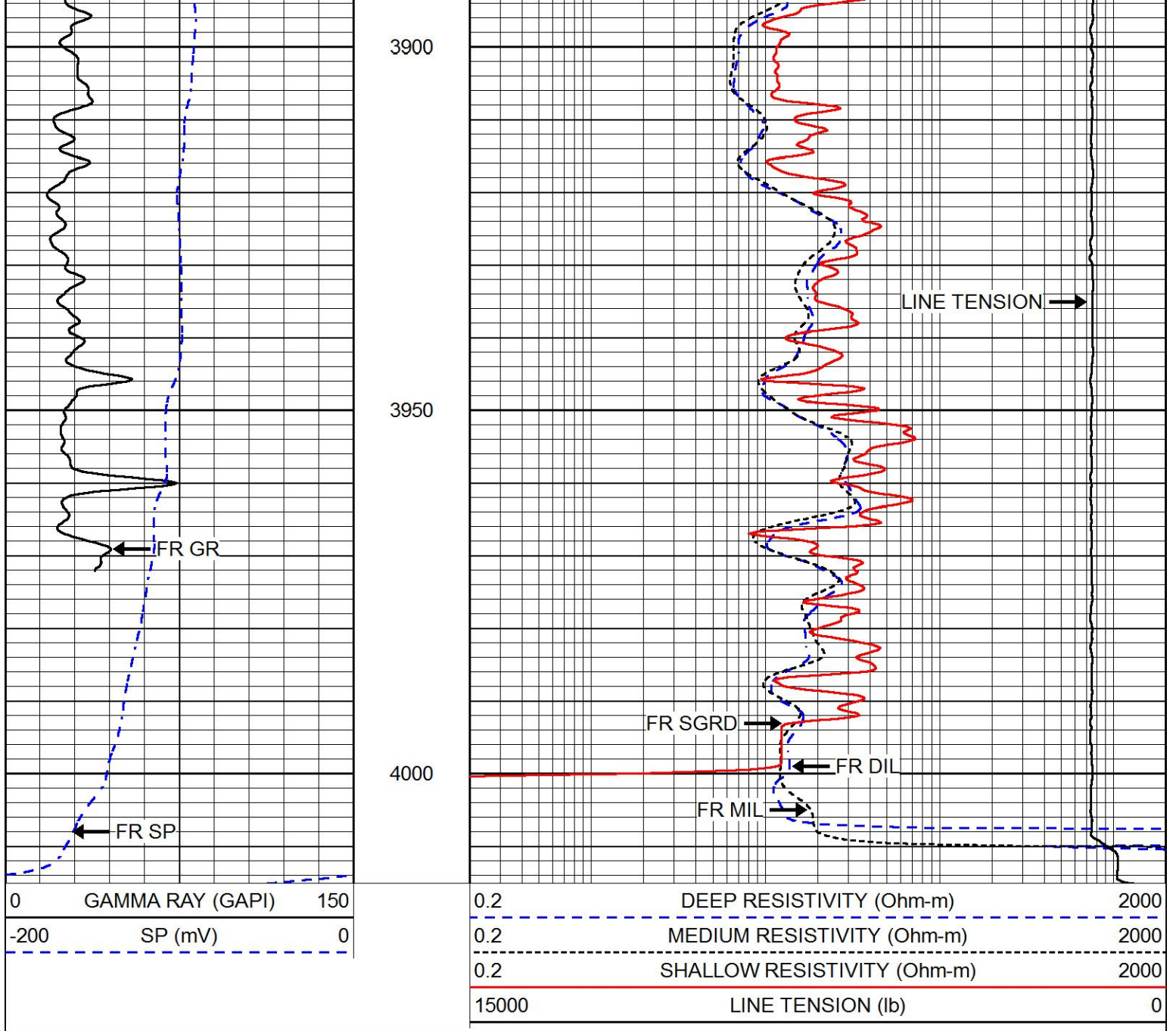
3700

3750

3800

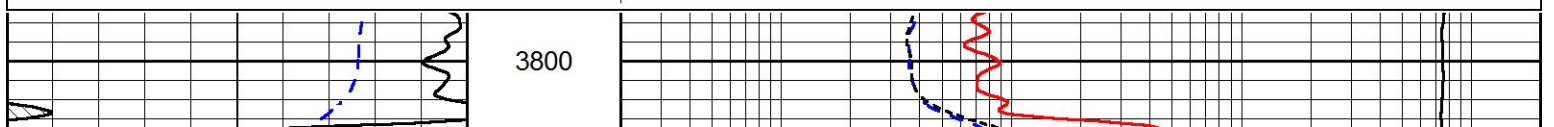
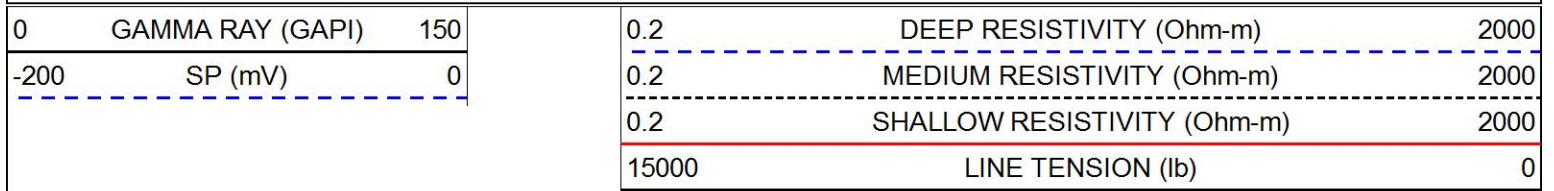
3850

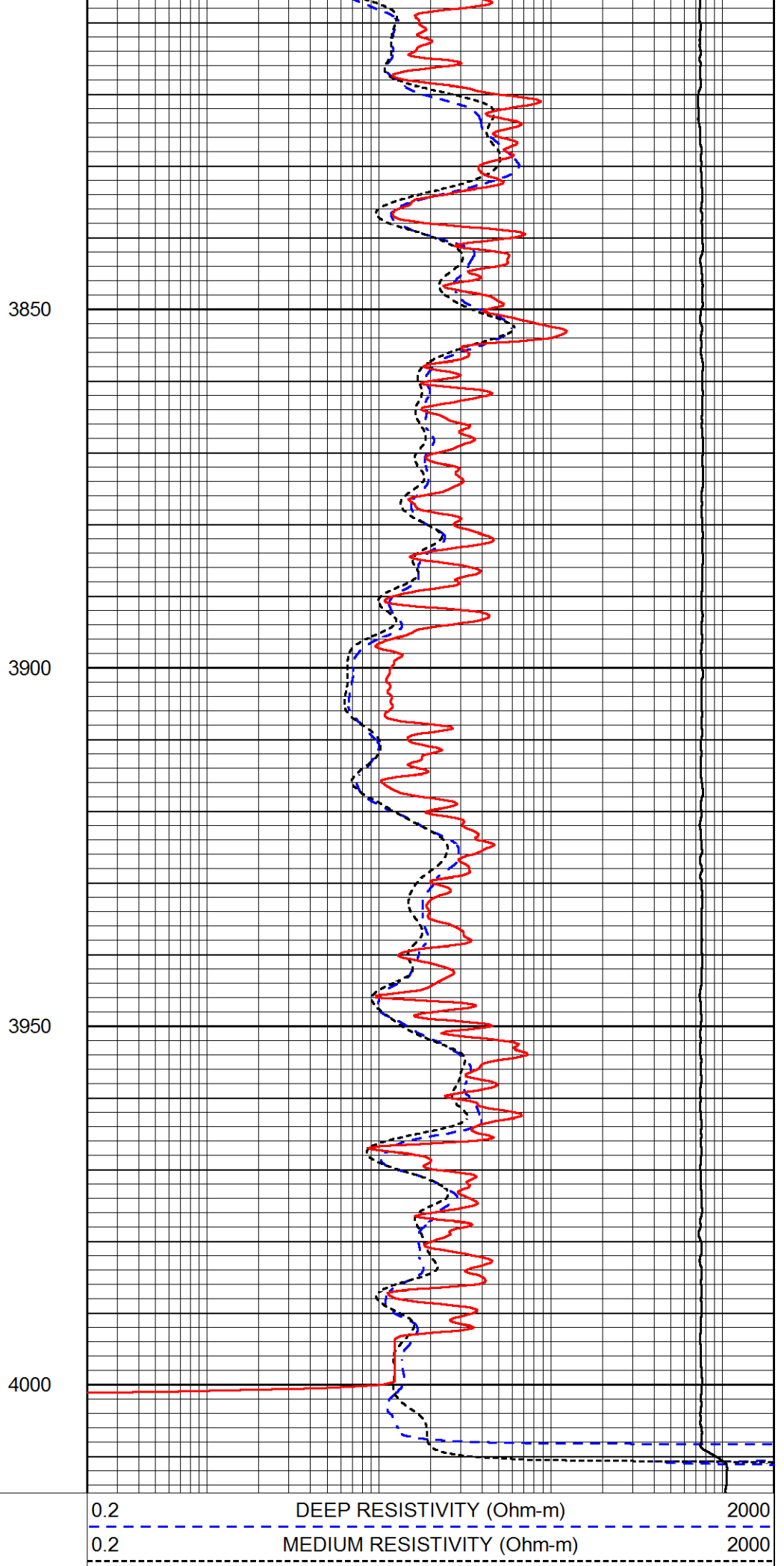
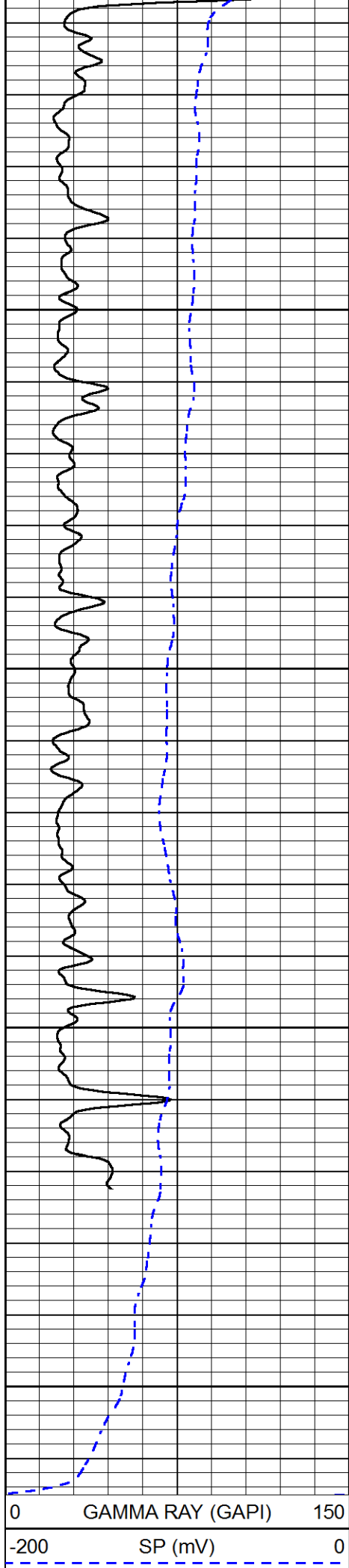




REPEAT SECTION

Database File stratakan_andrews_b_#22-1.db
 Dataset Pathname stkml/pass2.1
 Presentation Format dil
 Dataset Creation Sat Oct 08 01:57:10 2016
 Charted by Depth in Feet scaled 1:240





3850

3900

3950

4000

Detector	Readings	Target	Normalization
Short Space	6240.00 cps	1000.00 cps	1.6025
Long Space	460.00 cps	1000.00 cps	1.9500

Gamma Ray Calibration Report

Serial Number:	89-M&W	
Tool Model:	M&W	
Calibration Performed:	Fri Sep 30 22:06:47 2016	
Calibrator Value:	1000.0	GAPI
Background Reading:	0.0	cps
Calibrator Reading:	6.2	cps
Sensitivity:	0.5200	GAPI/cps



PIONEER
Pioneer Energy Services

Company	STRATAKAN EXPLORATION, INC.
Well	ANDREWS B #22-1
Field	KENILWORTH
County	STAFFORD
State	KANSAS