



MIDWEST SURVEYS
 LOGGING - PERFORATING - CONSULTING SERVICES
 P.O. Box 88, Osawatomie, KS 66064
 913.755.2128

GAMMA RAY / NEUTRON / CCL

File No. _____

Company **Colt Energy, Inc.**

Well **Pendley No.- 33**

Field **Big Sandy**

County **Woodson** State **Kansas**

Location **2502 FSL & 1947 FEL**

NE-NW-SE

Sec. 22 Twp. 26S Rge. 14E

Permanent Datum **GL** Elevation **986'**

Log Measured From **GL**

Drilling Measured From **GL**

11-21-2016

Date _____

Run Number **One**

Depth Driller **1472.0**

Depth Logger **1423.0**

Bottom Logged Interval **1423.0**

Top Log Interval **20.0**

Fluid Level _____

Type Fluid **Water**

Density / Viscosity **NA**

Salinity - PPM Cl **NA**

Max Recorded Temp **NA**

Estimated Cement Top **0.0**

Equipment No. _____

Location **102 Osawatomie**

Recorded By **Gary Wiedisch**

Witnessed By **John Amernan**

BOREHOLE RECORD

CASING RECORD

TO 41.9

FROM 0.0

SIZE 8.625"

WT 24.0#

FROM 0.0

TO 1433.95

WT 10.5#

FROM 0.0

TO 1423.95

WT 8.625"

WT 8.625"

WT 8.625"

WT 8.625"

WT 8.625"

WT 8.625"

WT 8.625"

WT 8.625"

WT 8.625"

WT 8.625"

WT 8.625"

WT 8.625"

WT 8.625"

WT 8.625"

WT 8.625"

WT 8.625"

WT 8.625"

WT 8.625"

WT 8.625"

WT 8.625"

WT 8.625"

WT 8.625"

WT 8.625"

WT 8.625"

WT 8.625"

WT 8.625"

WT 8.625"

WT 8.625"

WT 8.625"

WT 8.625"

WT 8.625"

WT 8.625"

WT 8.625"

WT 8.625"

WT 8.625"

WT 8.625"

WT 8.625"

WT 8.625"

WT 8.625"

WT 8.625"

WT 8.625"

WT 8.625"

WT 8.625"

WT 8.625"

WT 8.625"

WT 8.625"

WT 8.625"

WT 8.625"

WT 8.625"

WT 8.625"

WT 8.625"

WT 8.625"

WT 8.625"

WT 8.625"

WT 8.625"

WT 8.625"

WT 8.625"

WT 8.625"

WT 8.625"

WT 8.625"

WT 8.625"

WT 8.625"

WT 8.625"

WT 8.625"

WT 8.625"

WT 8.625"

WT 8.625"

WT 8.625"

WT 8.625"

WT 8.625"

WT 8.625"

WT 8.625"

WT 8.625"

WT 8.625"

WT 8.625"

WT 8.625"

WT 8.625"

WT 8.625"

WT 8.625"

WT 8.625"

WT 8.625"

WT 8.625"

WT 8.625"

WT 8.625"

WT 8.625"

WT 8.625"

WT 8.625"

WT 8.625"

WT 8.625"

WT 8.625"

WT 8.625"

WT 8.625"

WT 8.625"

WT 8.625"

WT 8.625"

WT 8.625"

WT 8.625"

WT 8.625"

WT 8.625"

WT 8.625"

WT 8.625"

WT 8.625"

WT 8.625"

WT 8.625"

WT 8.625"

WT 8.625"

WT 8.625"

WT 8.625"

WT 8.625"

WT 8.625"

WT 8.625"

WT 8.625"

WT 8.625"

WT 8.625"

WT 8.625"

WT 8.625"

WT 8.625"

WT 8.625"

WT 8.625"

WT 8.625"

WT 8.625"

WT 8.625"

WT 8.625"

WT 8.625"

WT 8.625"

WT 8.625"

WT 8.625"

WT 8.625"

WT 8.625"

WT 8.625"

WT 8.625"

WT 8.625"

WT 8.625"

WT 8.625"

WT 8.625"

WT 8.625"

WT 8.625"

WT 8.625"

WT 8.625"

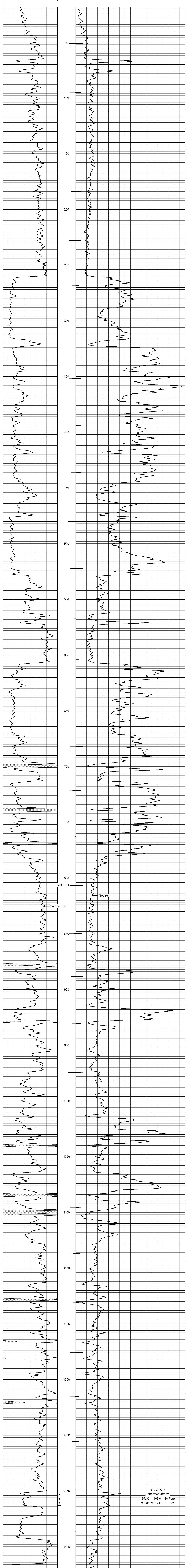
Drilling Contractor :
Bar Drilling, LLC

<<< Fold Here >>>

All interpretations are opinions based on inferences from electrical or other measurements and we cannot and do not guarantee the accuracy or correctness of any interpretation, and we shall not, except in the case of gross or willful negligence on our part, be liable or responsible for any loss, costs, damages, or expenses incurred or sustained by anyone resulting from any interpretation made by any of our officers, agents or employees. These interpretations are also subject to our general terms and conditions set out in our current Price Schedule.

Database File: pendley 33.db
 Dataset Pathname: pass1
 Presentation Format: gr-n-ccl
 Dataset Creation: Mon Nov 21 09:33:19 2016 by Log SCH 111116
 Charted by: Depth in Feet scaled 1.240

0 Gamma Ray (cps) 150 -1 CCL 1 Neutron (cps) 100 1900



11-23-2016
 Perforated Interval
 1352.0 - 1363.0 46 Perfs
 3 3/8" DP 19 Gr. T. ECG