

**MIDWEST SURVEYS**  
 LOGGING - PERFORATING - COMSIL LOG SERVICES  
 P.O. Box 88, Osawatomie, KS 66084  
 913.755.2128

**GAMMA RAY / NEUTRON / CCL**

File No. \_\_\_\_\_

Company **Coit Energy, Inc.**

Well **Pendley No. - 29**

Field **Big Sandy**

County **Woodson** State **Kansas**

Location **1841 FSL & 1932 FEL**

Other Services **Perforate**

Sec. 22 Twp. 26S Rge. 14E Elevation

Perforation Datum Log Measured From Drilling Measured From

Date \_\_\_\_\_

Run Number \_\_\_\_\_

Depth Logger \_\_\_\_\_

Bottom Logged Interval \_\_\_\_\_

Top Log Interval \_\_\_\_\_

Fluid Level \_\_\_\_\_

Type Fluid \_\_\_\_\_

Density / Viscosity \_\_\_\_\_

Salinity - PPM Cl \_\_\_\_\_

Max Recorded Temp \_\_\_\_\_

Equipment No. \_\_\_\_\_

Estimated Cement Top \_\_\_\_\_

Location **102 Osawatimie**

Recorded By **Gary Minisch**

Witnessed By **John Anemian**

RUN NO	BIT	FROM	TO	SIZE	WEI	FROM	TO
One	12.25"	0.0	44.0	8.625"	24.9#	0.0	44.0
Two	6.75"	44.0	1472.0	4.50"	10.5#	0.0	1483.0
					Set	At	1487.0

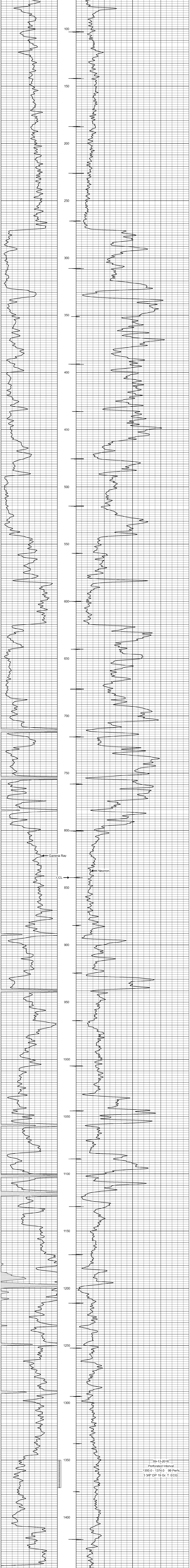
<<< Fold Here >>>

All interpretations are opinions based on inferences from electrical or other measurements and we cannot and do not guarantee the accuracy or correctness of any interpretation, and we shall not, except in the case of gross or willful negligence on our part, be liable or responsible for any loss, costs, damages, or expenses incurred or sustained by anyone resulting from any interpretation made by any of our officers, agents or employees. These interpretations are also subject to our general terms and conditions set out in our current Price Schedule.

Comments

Drilling Contractor :  
**Bar Drilling, LLC**

Database File: pendley 29.db  
 Dataset Pathname: pass1  
 Presentation Format: gr-n-ccl  
 Dataset Creation: Tue Sep 13 09:51:59 2016 by Log SCH 111116  
 Charted by: Depth in Feet scaled 1.240



09-13-2016  
 Perforated Interval  
 1350.0 - 1374.0 99 Perfs  
 3 3/8" DP 19 Gr. T. ECC