



**COMPENSATED DENSITY
NEUTRON
LOG**

Company American Oil LLC.
Well Nordman #1-19
Field Wildcat
County Barton
State Kansas

Location: 1981' FSL & 1672' FEL
 SEC 19 TWP 18S RGE 14W
 Permanent Datum Ground Level Elevation 1923'
 Log Measured From KB 8' AGL
 Drilling Measured From KB
 Other Services
 DIL
 ML
 Elevation
 K.B. 1931'
 D.F. 1930'
 G.L. 1923'

Date	4-24-18
Run Number	One
Depth Driller	3600'
Depth Logger	3600'
Bottom Logged Interval	3588'
Top Log Interval	2900'
Casing Driller	8 5/8" @ 348'
Casing Logger	348'
Bit Size	7 7/8"
Type Fluid in Hole	Chemical
Density / Viscosity	9.2/63
PH / Fluid Loss	10.1/11.0
Source of Sample	Pit
Rm @ Meas. Temp	0.9@68degf
Rmf @ Meas. Temp	0.72@68degf
Rmc @ Meas. Temp	1.15@68degf
Source of Rmf / Rmc	Calculated
Rm @ BHT	0.54@113degf
Time Circulation Stopped	8:00 p.m
Time Logger on Bottom	10:45 p.m
Maximum Recorded Temperature	113degf
Equipment Number	T-127
Location	Hays, KS.
Recorded By	C.Patterson
Witnessed By	Mr. Austin Klaus

<<< Fold Here >>>

All interpretations are opinions based on inferences from electrical or other measurements and we cannot and do not guarantee the accuracy or correctness of any interpretation, and we shall not, except in the case of gross or willful negligence on our part, be liable or responsible for any loss, costs, damages, or expenses incurred or sustained by anyone resulting from any interpretation made by any of our officers, agents or employees. These interpretations are also subject to our general terms and conditions set out in our current Price Schedule.

Comments

**Turn South on NW 90 Ave. On West Side of Olmitz, KS and 2 mi to NW 90 Rd.,
Then go East 2 mi. to 70 Rd., Then go 1 1/2 mi. South on 70 Rd., West Into Location**

**Thanks for using Gemini Wireline LLC
785-625-1182**

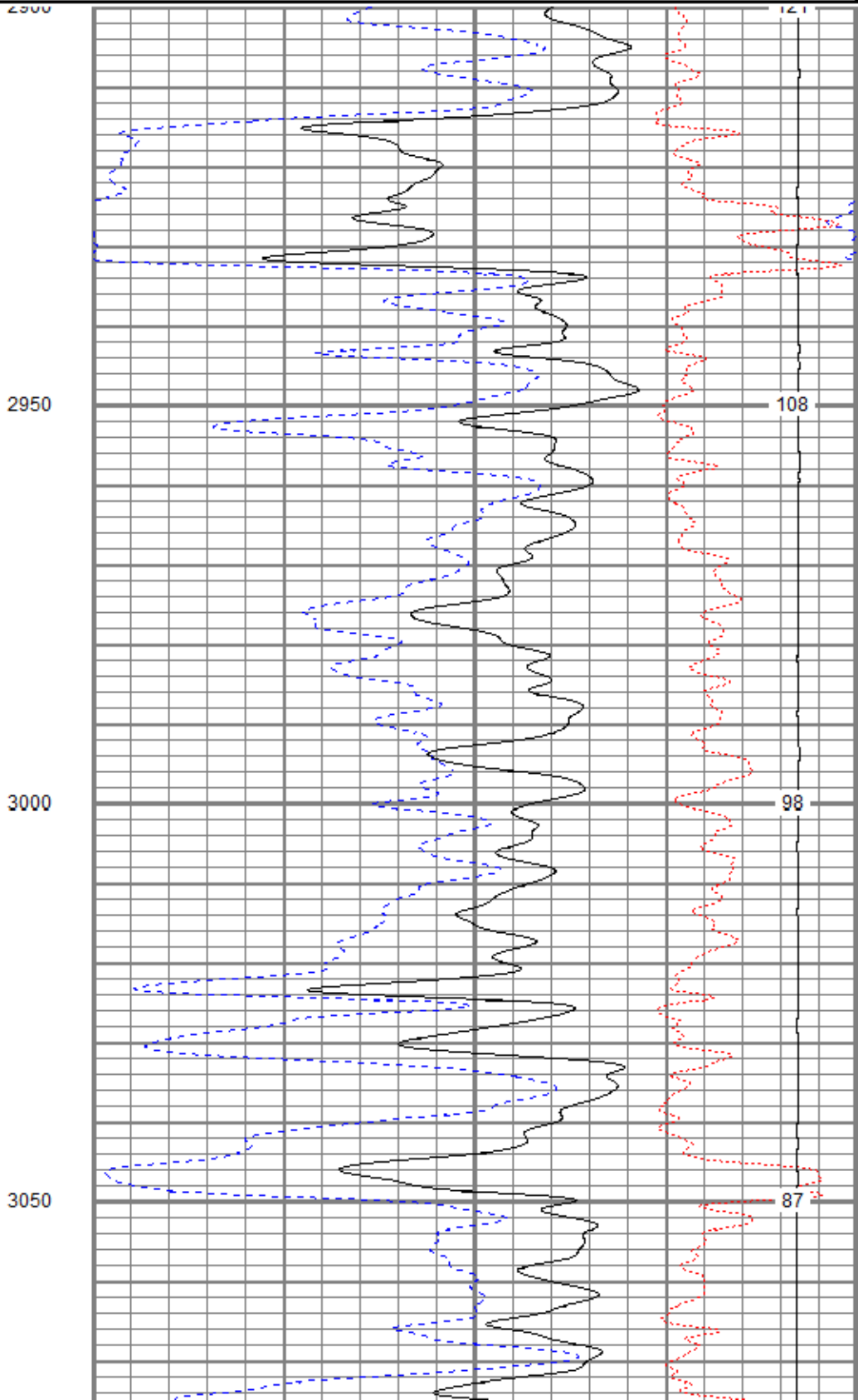
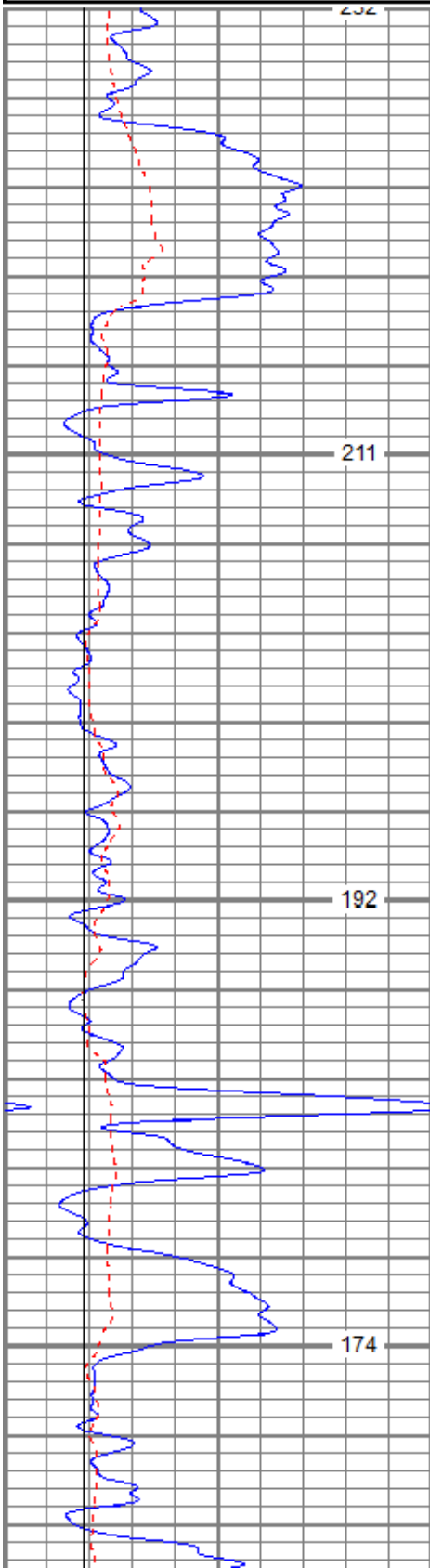


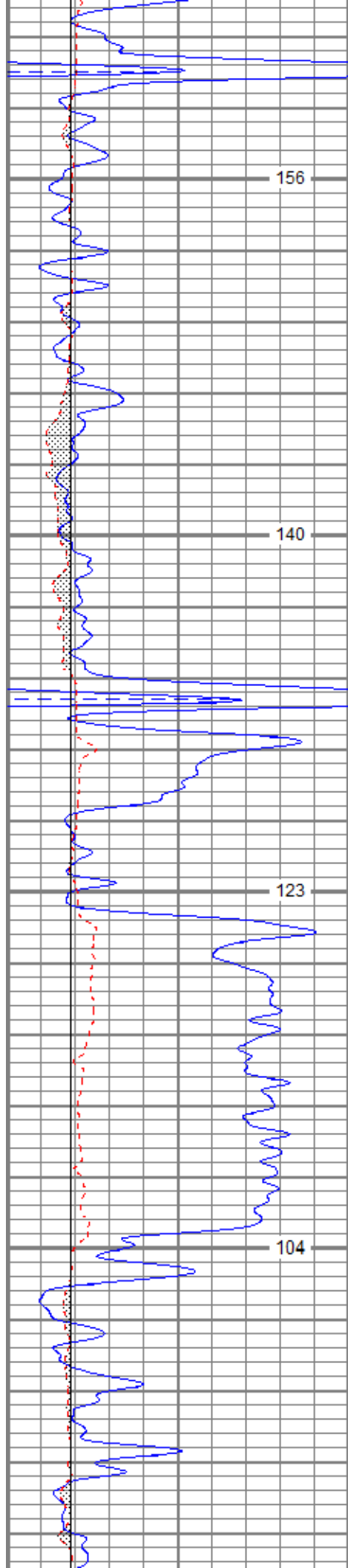
MAIN PASS

Database File aonordman1-19oh.db
 Dataset Pathname pass4.1
 Presentation Format kcdnl
 Dataset Creation Wed Apr 25 00:55:28 2018
 Charted by Depth in Feet scaled 1:240

0	GR (GAPI)	150
6	DCAL (in)	16
6	BOREID (in)	16
6	BOREID (in)	16
TBHV (ft3)		

30	NPOR (pu)	-10
30	DPOR (pu)	-10
70	DPOR (pu)	30
-0.25	RHOC (g/cc)	0.25
8000	LTEN (lb)	0
ABHV (ft3)		



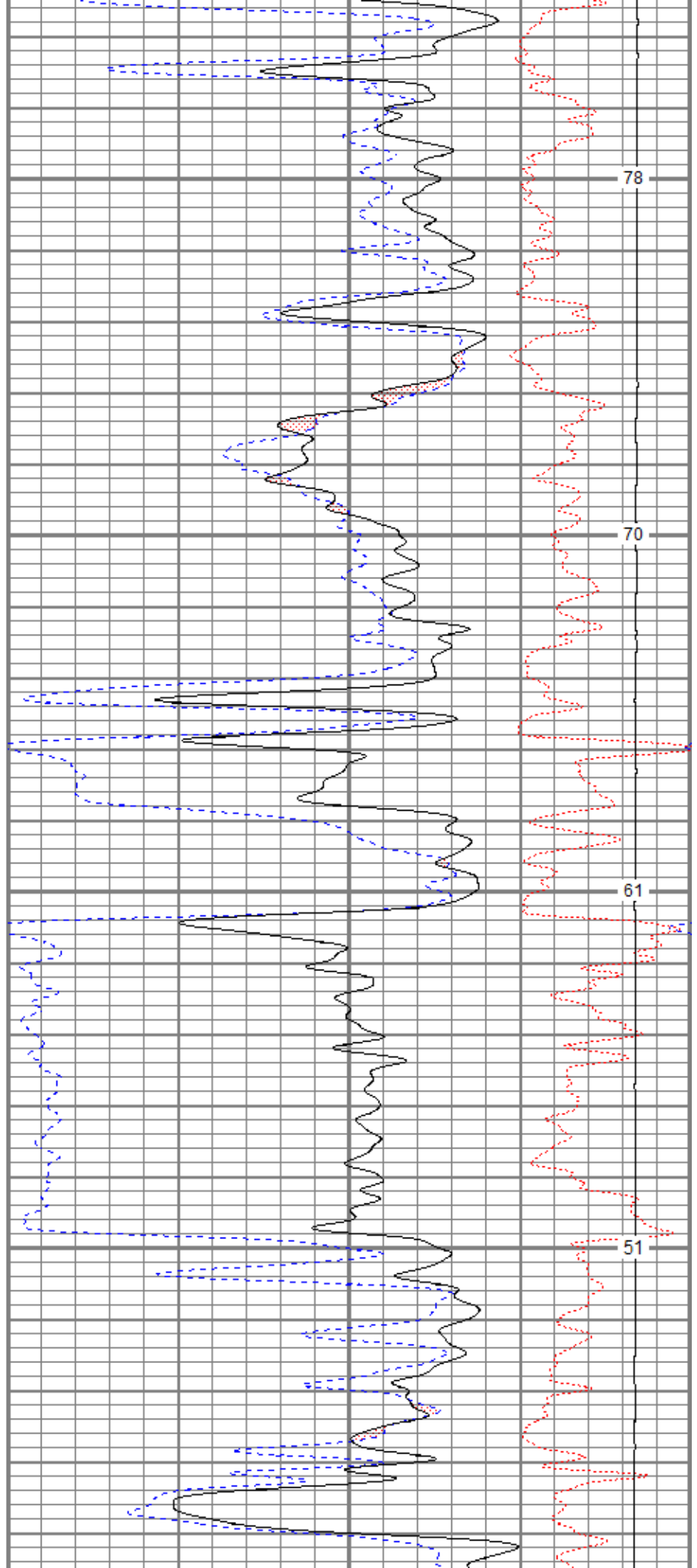


3100

3150

3200

3250

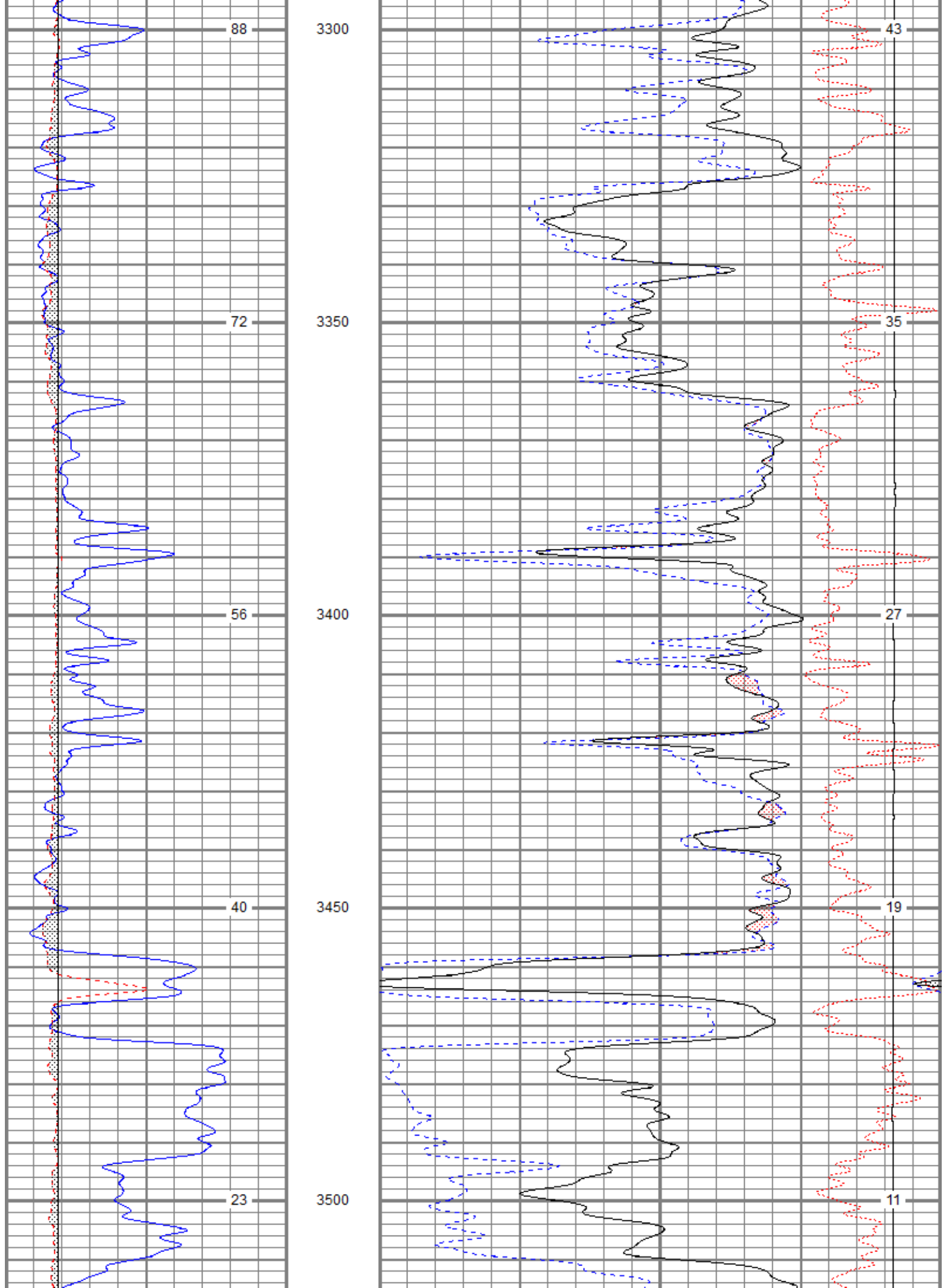


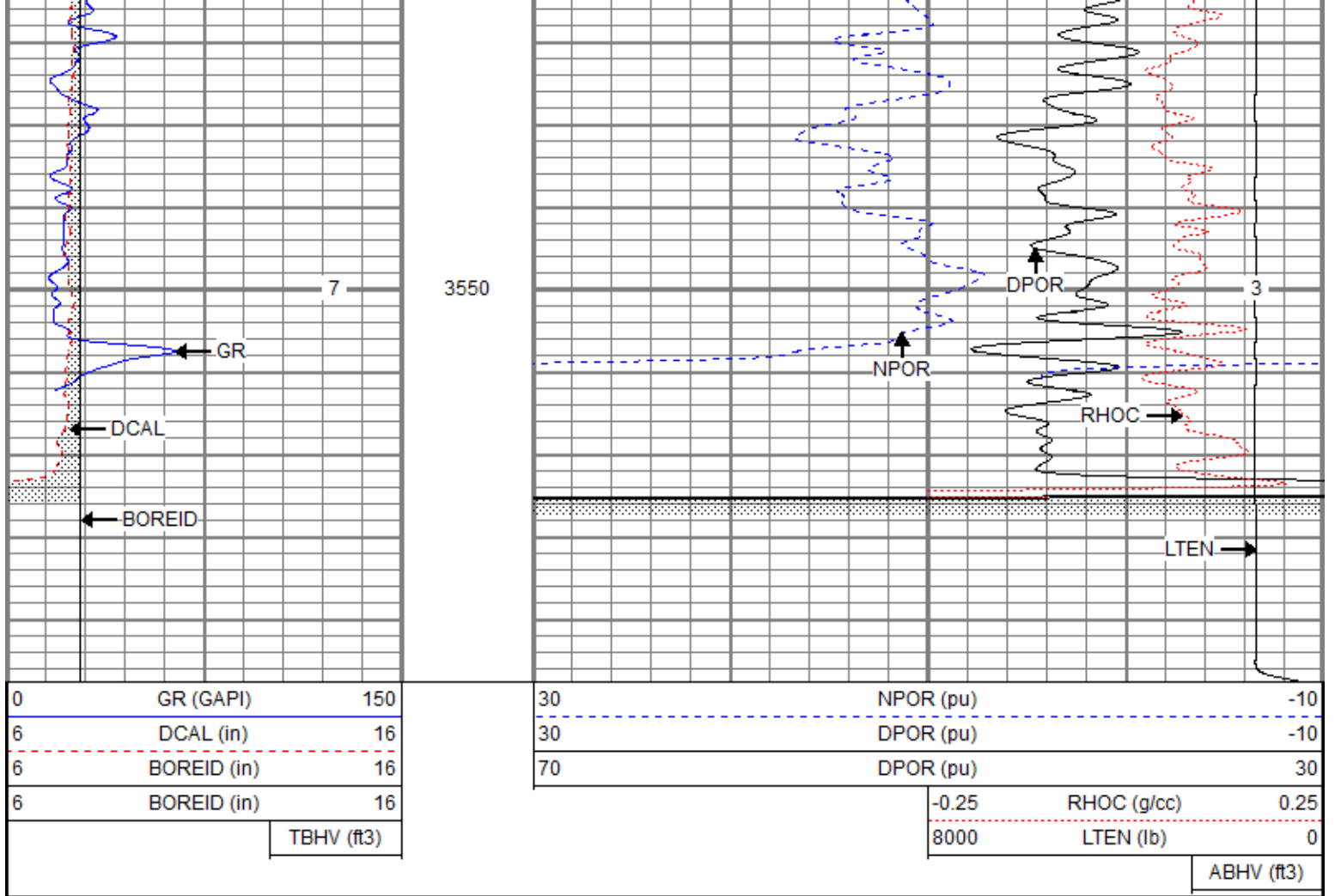
78

70

61

51





Calibration Report

Database File aonordman1-19oh.db
 Dataset Pathname pass4.1
 Dataset Creation Wed Apr 25 00:55:28 2018

Dual Induction Calibration Report

Serial-Model: 5375-G
 Surface Cal Performed: Tue Jun 14 04:36:54 2016
 Downhole Cal Performed: Tue Jun 14 04:37:33 2016
 After Survey Verification Performed: Tue Jun 14 04:37:33 2016

Surface Calibration

Loop:	Readings			References			Results	
	Air	Loop		Air	Loop		m	b
Deep	-0.019	0.668	V	0.000	350.000	mmho/m	509.788	9.664
Medium	0.003	0.732	V	0.000	400.000	mmho/m	548.634	-1.470
Internal:	Zero	Cal		Zero	Cal		m	b
Deep	-0.016	0.668	V	0.000	350.000	mmho/m	511.493	8.207
Medium	0.002	0.737	V	0.000	550.000	mmho/m	747.662	-1.132

Downhole Calibration

Internal:	Readings			References			Results	
	Zero	Cal		Zero	Cal		m	b
Deep	2.082	347.794	mmho/m	1.484	350.317	mmho/m	1.009	-0.616
Medium	-0.599	402.029	mmho/m	-0.640	402.950	mmho/m	1.002	-0.039
Shallow	2.424	0.019	V	500.000	2.000	Ohm m	207.121	2.005

After Survey Verification								
Internal:	Readings			Targets			Results	
	Zero	Cal		Zero	Cal		m'	b'
Deep	0.000	0.000	mmho/m	2.082	347.794	mmho/m	1.009	-0.616
Medium	0.000	0.000	mmho/m	-0.599	402.029	mmho/m	1.002	-0.039
Shallow	0.000	0.000	Ohm-m	500.000	2.000	Ohm-m	1.000	0.000

Compensated Density Calibration Report

Serial-Model: 2388DHT-DHT
 Source / Verifier: csv j12 / csv j12
 Master Calibration Performed: Sun Aug 13 21:51:41 2017
 Before Survey Verification Performed:
 After Survey Verification Performed:

Master Calibration						
	Density		Far Detector	Near Detector		
Magnesium	1.750	g/cc	825.09	253.60	cps	
Aluminum	2.680	g/cc	159.18	174.22	cps	
Spine Angle = 77.15			Density/Spine Ratio = 0.551			
	Size		Reading			
Small Ring	7.85	in	5982.32			
Large Ring	15.00	in	10612.00			

Before Survey Verification						
	Target		Measured			
		g/cc			g/cc	
		g/cc			g/cc	
		g/cc			g/cc	

After Survey Verification						
	Target		Measured			
		g/cc			g/cc	
		g/cc			g/cc	
		g/cc			g/cc	

Gamma Ray Calibration Report

Serial Number: 2000
 Tool Model: P2000
 Performed: Sun Feb 18 09:53:39 2018

Calibrator Value: 1.0 GAPI

Background Reading: 0.0 cps
 Calibrator Reading: 1.0 cps

Sensitivity: 0.6000 GAPI/cps

Neutron Calibration Report

Serial Number: 5108
 Tool Model: PROBE
 Performed: Sun Feb 19 03:21:57 2017

Calibrator Value: 1 NAPI

Calibrator Reading: 1 cps

Sensitivity: 1 NAPI/cps

Sensor	Offset (ft)	Schematic	Description	Length (ft)	O.D. (in)	Weight (lb)	
NEU	38.37		CHD-None	0.75	1.50	5.00	
			NEU-PROBE (5108) Probe	4.92	3.63	85.00	
GR	32.57		GR-P2000 (2000)	3.67	3.25	40.00	
			CDL-DHT (2388DHT) Digital High Temp CDL Tool	9.69	4.00	201.00	
LSD	23.78						
DCAL	23.49						
SSD	23.24						
HEADVOLT	21.47						
SP	10.60			DIL-G (5375) Gearhart	21.47	4.00	345.00
CILD	10.60						
CILM	6.89						
RLL3	1.70						

Dataset: aonordman1-19oh.db: field/well/run1/pass4.1
 Total length: 40.49 ft
 Total weight: 676.00 lb
 O.D.: 4.00 in



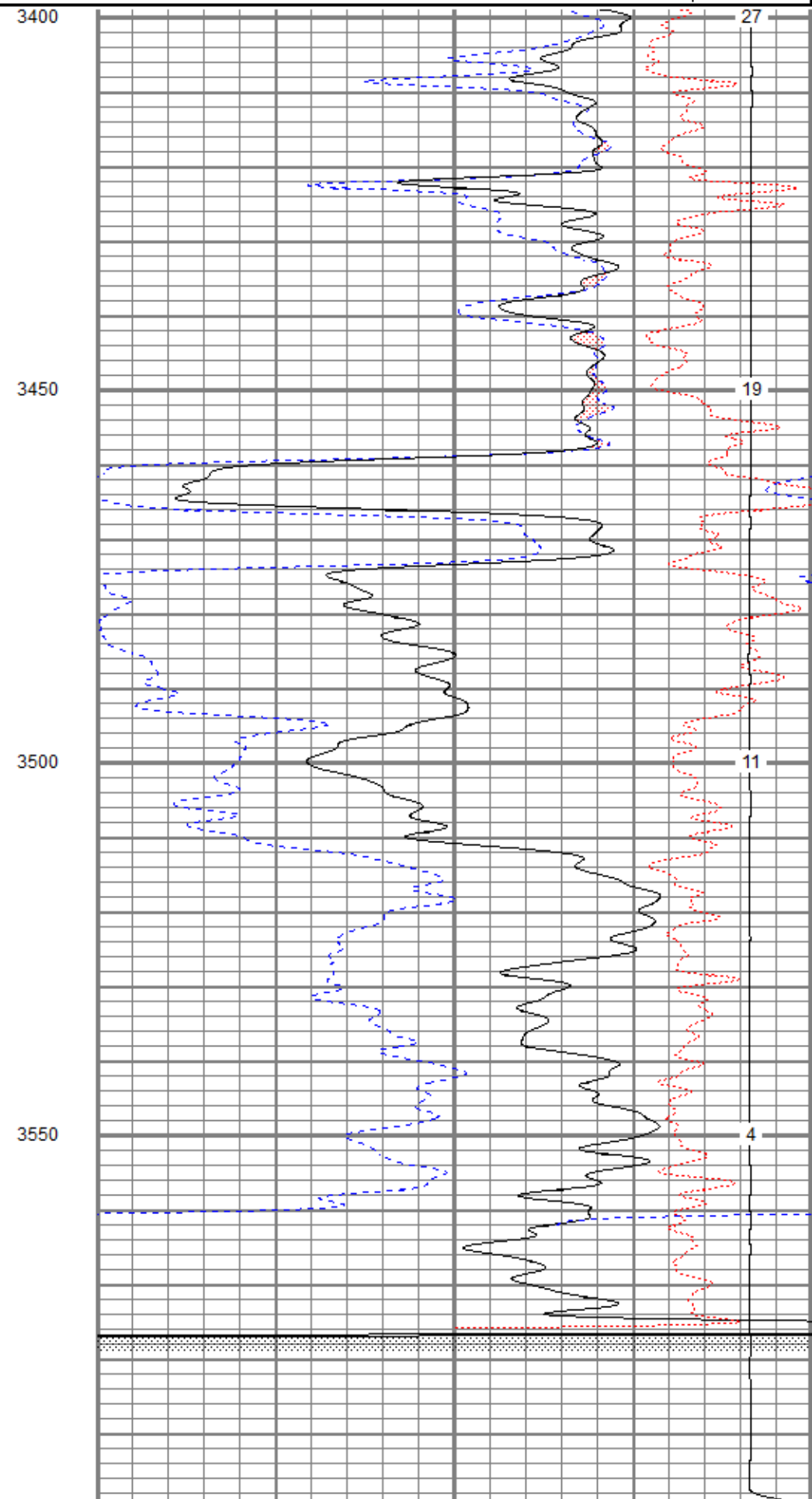
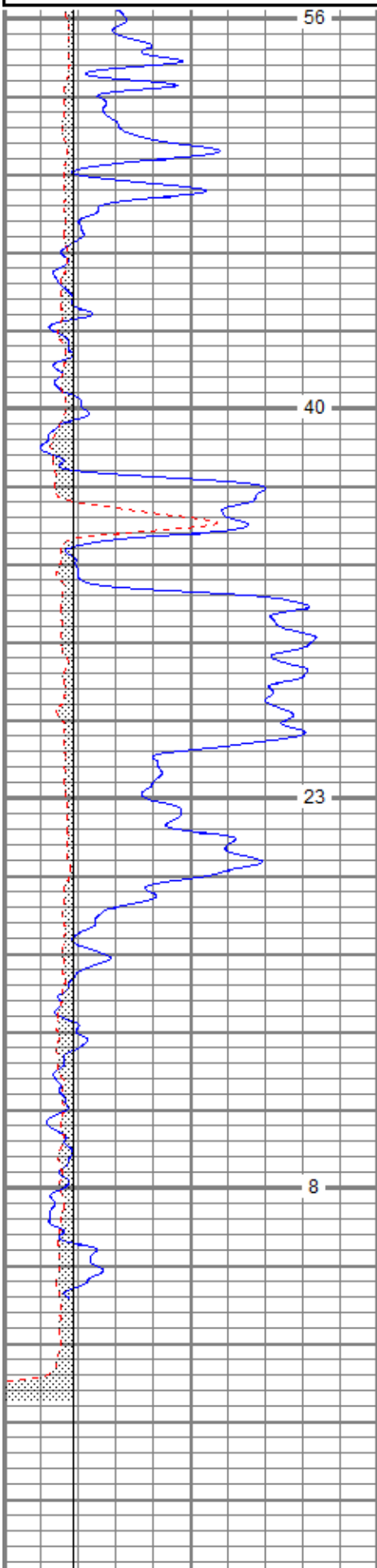
REPEAT SECTION

Database File: aonordman1-19oh.db
 Dataset Pathname: pass1.1
 Presentation Format: kcdnl
 Dataset Creation: Wed Apr 25 00:54:31 2018
 Charted by: Depth in Feet scaled 1:240

0	GR (GAPI)	150	30	NPOR (pu)	-10
6	DCAL (in)	16	30	DPOR (pu)	-10
6	BOREID (in)	16	70	DPOR (pu)	30

6 BOREID (in) 16
TBHV (ft3)

-0.25 RHOC (g/cc) 0.25
8000 LTEN (lb) 0
ABHV (ft3)



6	DCAL (in)	16
6	BOREID (in)	16
6	BOREID (in)	16
	TBHV (ft3)	

30	DPOR (pu)	-10
70	DPOR (pu)	30
-0.25	RHOC (g/cc)	0.25
8000	LTEN (lb)	0
	ABHV (ft3)	