



**GAMMA RAY  
NEUTRON  
COMPLETION LOG**

Company	LAYMON OIL II, LLC	Well	COFFIELD #23-18	Field	OWL CREEK	County	WOODSON	State	KANSAS
Location:	SEC 16 TWP 25S RGE 16E	Permanent Datum	G.L.	Elevation	988 ELEV	Log Measured From	G.L.	Elevation	988 ELEV
Location:	NE-SW-SW-SW 500' FSL & 4848' FEL	Drilling Measured From	G.L.	Elevation	988 ELEV	Log Measured From	G.L.	Elevation	988 ELEV
AP#	15-207-23632-00-00	Other Services							
Date	8-1-2018	Run Number	1-NEWWELL	Depth Driller	1055	Depth Logger			
Top Log Interval	SURFACE	Bottom Logged Interval	1035.1'	Fluid Level	FULL	Type Fluid	WATER	Production Casing	2 7/8" @ T.D. @
Max. Recorded Temp		Estimated Cement Top		Calculated Cement Top		Amount & Type Cement		Dilling Contractor	COMPANY TOOLS
Equipment Number	107	Location	UDEN, D	Witnessed By	LAYMON, M	Recorded By			

<<< Fold Here >>>

All interpretations are inferences based on electrical or other measurements and we cannot and do not guarantee the accuracy or correctness of any interpretation, and we shall not, except in the case of gross or willful negligence on our part, be liable or responsible for any loss, costs, damages, or expenses incurred or sustained by anyone resulting from any interpretation made by any of our officers, agents or employees. These interpretations are also subject to our general terms and conditions set out in our current Price Schedule.

Comments

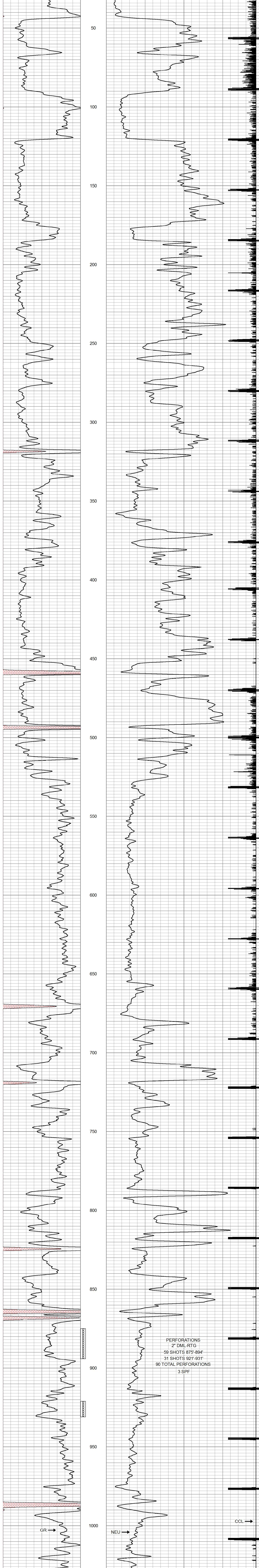
THANK YOU

Sensor	Offset (ft)	Schematic	Description	Len (ft)	OD (in)	Wt (lb)
GR	7.59		GR-TITAN 169 (TIT169_001) Titan 1 11/16" Gamma Ray	4.75	1.69	20.00
CCL	5.05		CCL-TITAN 169 (TIT169) Titan 1 11/16" Logging CCL	1.83	1.69	7.50
NEU	0.63		NEU-TITAN 169 (TIT169_001) Titan 1 11/16" Neutron	4.33	1.69	20.00

Dataset: coffield #23-18.db; field/well/run1/pass1  
 Total Length: 10.92 ft  
 Total Weight: 47.50 lb  
 O.D. 1.69 in

Database File: f:\coffield #23-18.db  
 Dataset Pathname: pass1  
 Presentation Format: gr-n-cl  
 Dataset Creation: Wed Aug 01 10:09:29 2018 by Log Std Casedhole 07122  
 Charted by: Depth in Feet scaled 1.240

0	GR	150	100	NEU	1500
150	gr	300		13	CCL
					-1



Company	LAYMON OIL II, LLC	Date	8-1-2018
Well	COFFIELD #23-18		
Field	OWL CREEK		
County	WOODSON	SEC. 16 TWP. 25S RGE. 16E	
State	KANSAS		

