



MIDWEST SURVEYS
 LOGGING - PERFORATING - CONSULTING SERVICES
 P.O. Box 68, Osawatomie, KS 66064
 P.O. 735 - 2128

GAMMA RAY / NEUTRON / CCL

File No. Company **JV Oil, Inc.**

Well **Fredline "A" No. 5-H**

Field **Altoona**

County **Wilson** State **Kansas**

Location **830' FNL & 2840' FWL**

Other Services **Perforate**

Sec. **20** Twp. **28S** Rge. **17E** Elevation **906'**

Perforation Depth **GL** KB NA

Log Measured From **GL** D.F. NA

Drilling Measured From **GL** G.L. **906'**

Date **09-11-2018**

Run Number **One**

Depth Driller **1000.0**

Depth Logger **984.5**

Bottom Logged Interval **983.5**

Top Log Interval **20.0**

Fluid Level **Full**

Type Fluid **Water**

Density / Viscosity **NA**

Salinity - PPM Cl **NA**

Max Recorded Temp **NA**

Estimated Cement Top **NA**

Equipment No. **0.0** Location **Osawatomie**

Recorded By **Gary Vindisch**

Witnessed By **Victor Hoos**

BORE-HOLE RECORD

CASING RECORD

TO FROM TO FROM TO FROM TO

No. BIT 12.00" 0.0 8.625" 24.0 0.0 20.0

Two 5.875" 20.0 1000.0 2.875" 6.5 0.0 897.9

<<< Fold Here >>>

All interpretations are opinions based on inferences from electrical or other measurements and we cannot and do not guarantee the accuracy or correctness of any interpretation, and we shall not, except in the case of gross or willful negligence on our part, be liable or responsible for any loss, costs, damages, or expenses incurred or sustained by anyone resulting from any interpretation made by any of our officers, agents or employees. These interpretations are also subject to our general terms and conditions set out in our current Price Schedule.

Comments

Drilling Contractor :
 JV Oil, LLC.

Database File: friedline a 5h.db

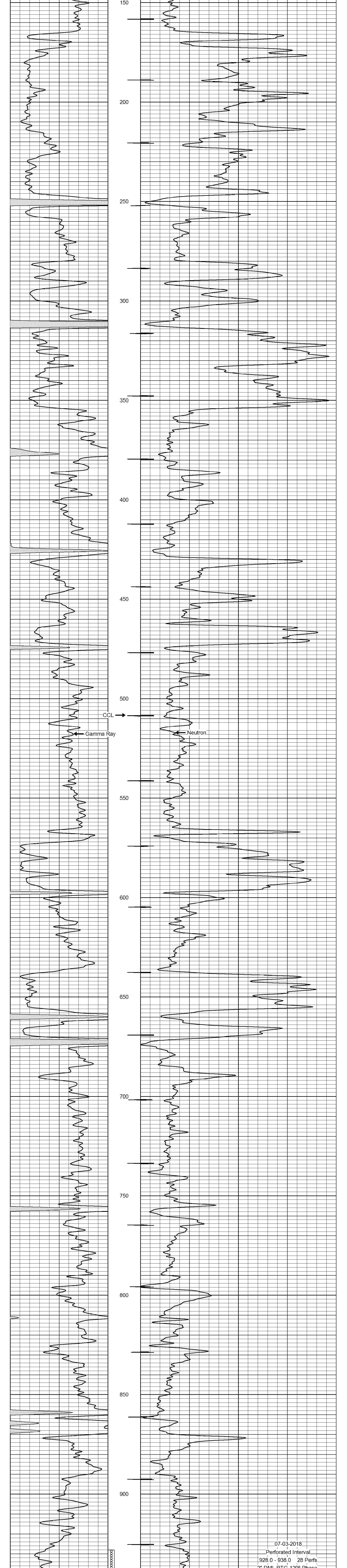
Dataset Pathname: pass1

Presentation Format: gr-n-ccl

Dataset Creation: Mon Jun 11 10:36:14 2018 by Log SCH 111116

Charted by: Depth in Feet scaled 1:240

0 Gamma Ray (cps) 150 100 Neutron (cps) 1900



07-03-2018

Perforated Interval

928.0 - 938.0 28 Perfs

2" DML RTG 120° Phase

0 Gamma Ray (cps) 150 100 Neutron (cps) 1900