



MIDWEST SURVEYS
 LOGGING - PERFORATING - CONSULTING SERVICES
 P.O. Box 68, Osawatomie, KS 66064
 913 / 755 - 2128

GAMMA RAY / NEUTRON / CCL

File No. _____

Company: **JV Oil, Inc.**
 Well: **Fredline "A" No. 3-H**

Field: **Altoona**
 County: **Wilson** State: **Kansas**

Location: **500' FNL & 2840' FWL**
NW-NW-NE

Sec. **20** Twp. **28S** Rge. **17E**
 Permian Datum: **GL** Elevation: **913**
 Log Measured From: **GL** KB NA
 Drilling Measured From: **GL** DJF NA
GL 913'

Date: **08-11-2018**
 Run Number: **One**
 Depth Driller: **1000.0**
 Depth Logger: **976.8**
 Bottom Logged Interval: **975.8**
 Top Log Interval: **20.0**

Type Fluid: **Water**
 Density / Viscosity: **NA**
 Salinity - PPM Cl: **NA**
 Max Recorded Temp: **NA**
 Estimated Cement Top: **0.0**

Equipment No.: **104** Location: **Osawatomie**
 Recorded By: **Gary Mordish**
 Witnessed By: **Victor Hood**

BORE-HOLE RECORD				CASING RECORD				
RUN	NO.	BIT	FROM	TO	SIZE	WGT.	FROM	TO
One	12.00"	0.0	20.0	1000.0	8.525"	24.0	0.0	20.0
Two	5.875"	20.0	1000.0		2.875"	6.5	0.0	977.96'

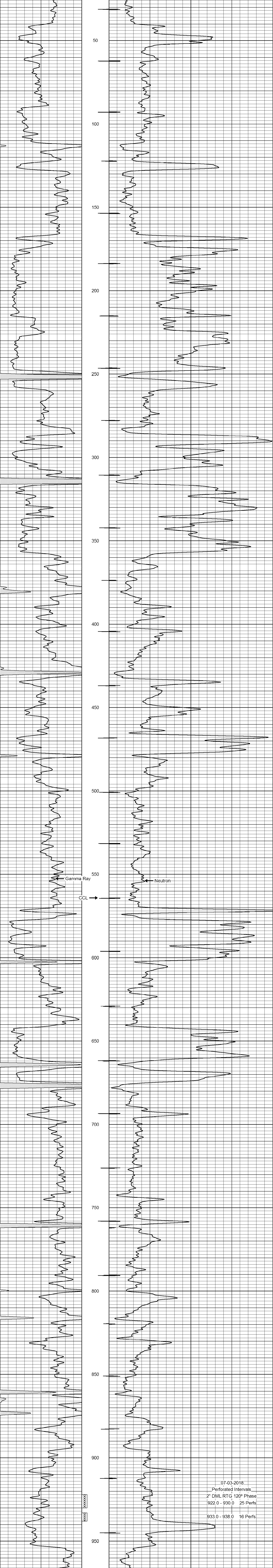
<<< Fold Here >>>

All interpretations are opinions based on inferences from electrical or other measurements and we cannot and do not guarantee the accuracy or correctness of any interpretation, and we shall not, except in the case of gross or willful negligence on our part, be liable or responsible for any loss, costs, damages, or expenses incurred or sustained by anyone resulting from any interpretation made by any of our officers, agents or employees. These interpretations are also subject to our general terms and conditions set out in our current Price Schedule.

Comments

Drilling Contractor :
JV Oil, LLC.

Database File: **fredline a 3h.db**
 Dataset Pathname: **pass1**
 Presentation Format: **gr-n-ccl**
 Dataset Creation: **Mon Jun 11 09:16:45 2018 by Log SCH 111116**
 Charted by: **Depth in Feet scaled 1:240**



07-03-2018
 Perforated Intervals
 2" DML RTG 120° Phase
 922.0 - 930.0 25 Perfs
 933.0 - 938.0 16 Perfs