

MICRO LOG

Company BLACK STONE PETROLEUM, LLC
Well MOORE #1
Field OTIS-ALBERT
County RUSH
State KANSAS

Company BLACK STONE PETROLEUM, LLC
Well MOORE #1
Field OTIS-ALBERT
County RUSH State KANSAS

Location: API #: 15-165-22154-00-00
1270' FNL & 1310' FWL
SEC 25 TWP 18S RGE 16W
Permanent Datum GROUND LEVEL Elevation 1928'
Log Measured From KELLY BUSHING 10' A.G.L.
Drilling Measured From KELLY BUSHING
Other Services CDL/CNL/DIL SONIC
Elevation K.B. 1938
D.F. 1936
G.L. 1928

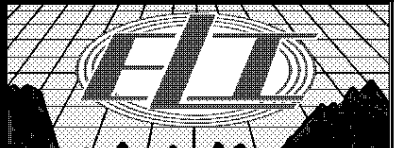
Table with 2 columns: Log Parameter (e.g., Date, Run Number, Depth Driller) and Value (e.g., 12/11/17, TWO, 3571).

<<< Fold Here >>>

All interpretations are opinions based on inferences from electrical or other measurements and we cannot and do not guarantee the accuracy or correctness of any interpretation, and we shall not, except in the case of gross or willful negligence on our part, be liable or responsible for any loss, costs, damages, or expenses incurred or sustained by anyone resulting from any interpretation made by any of our officers, agents or employees. These interpretations are also subject to our general terms and conditions set out in our current Price Schedule.

Comments

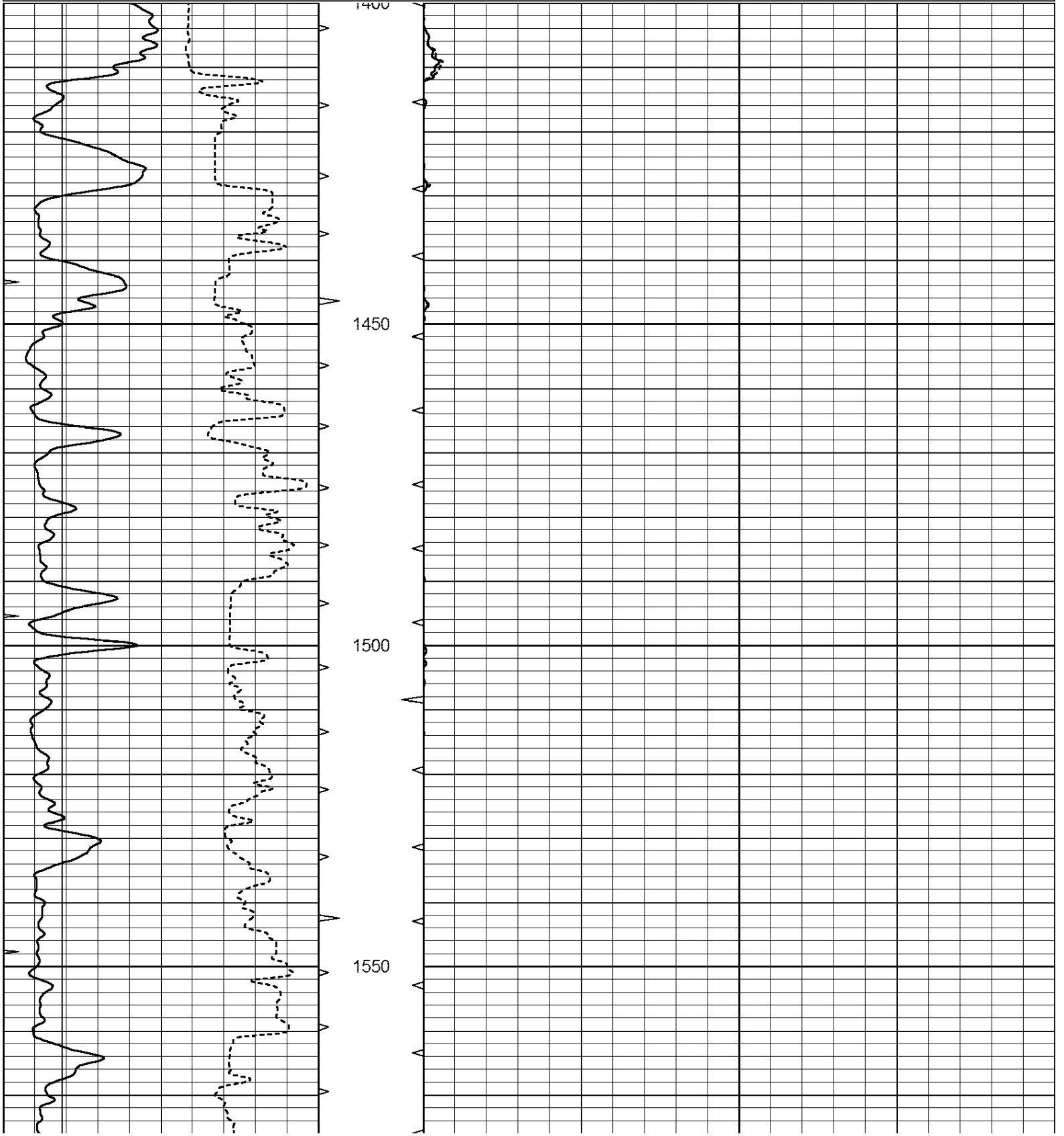
THANK YOU FOR USING ELI WIRELINE, HAYS, KS. (785) 628-6395
DIRECTIONS
96 HIGHWAY OUT OF RUSH CENTER EAST TO 390
GO PAST 200 YRDS NORTH INTO.

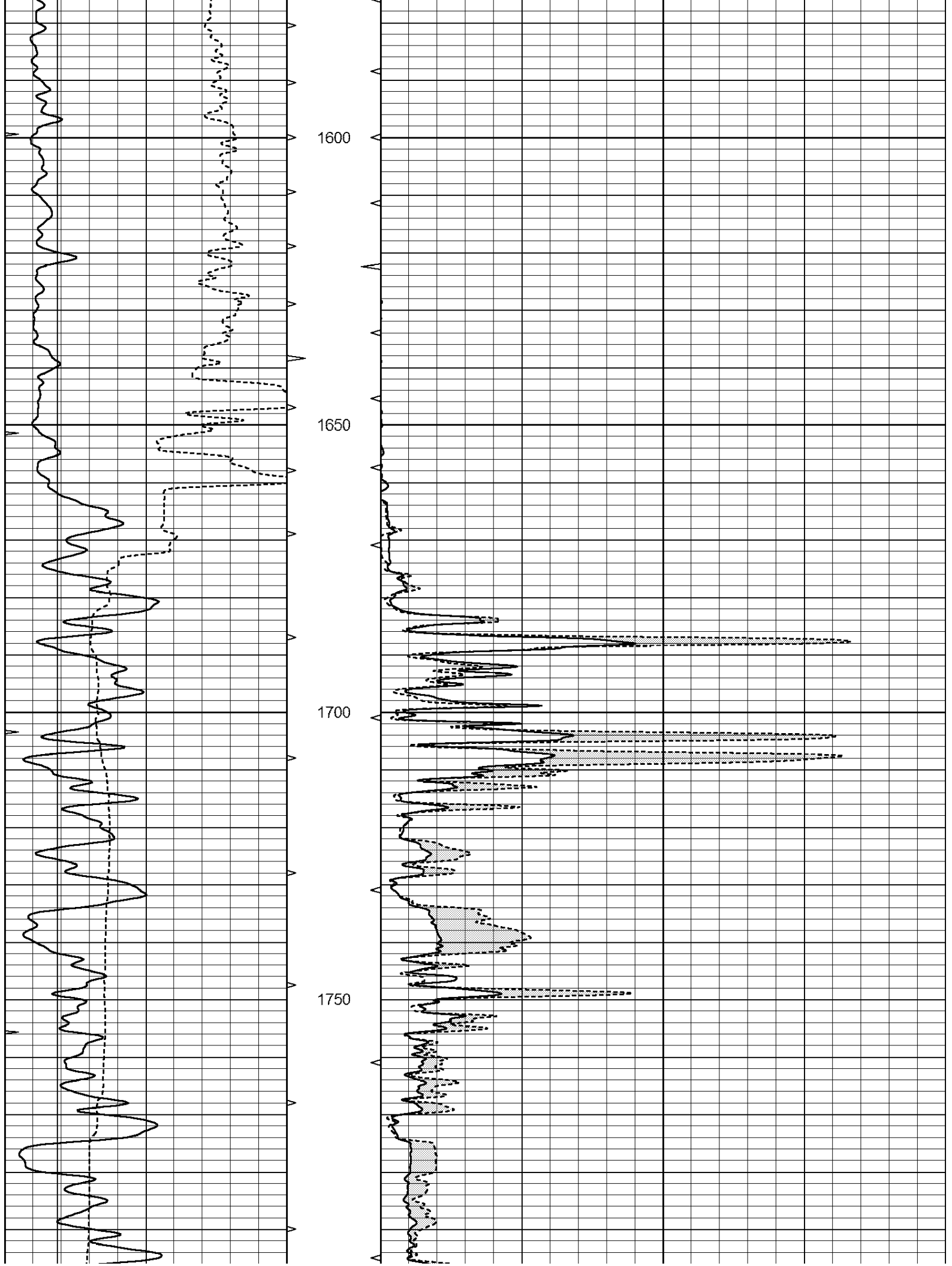


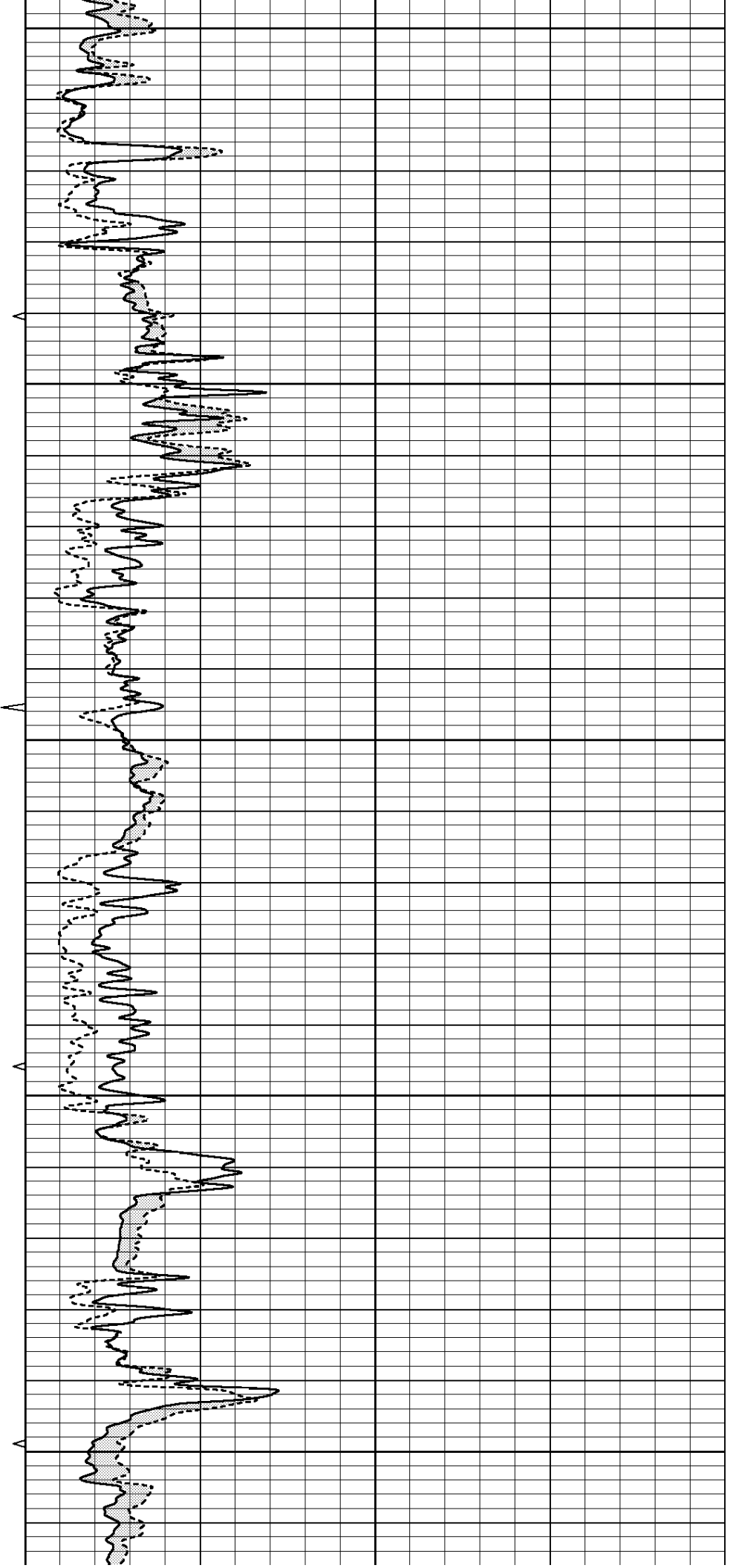
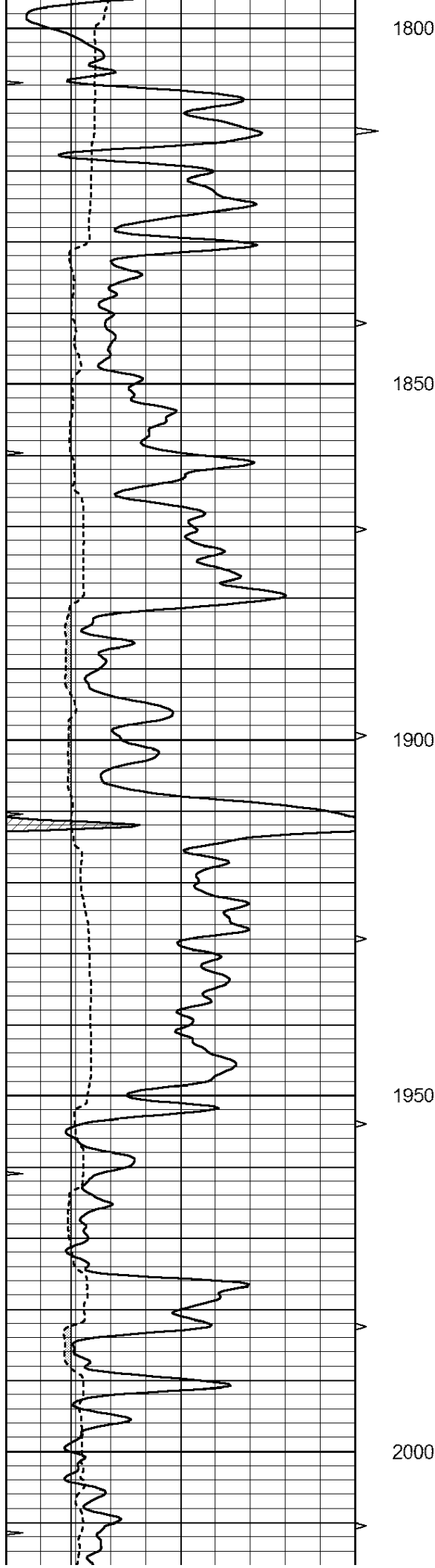
MAIN PASS

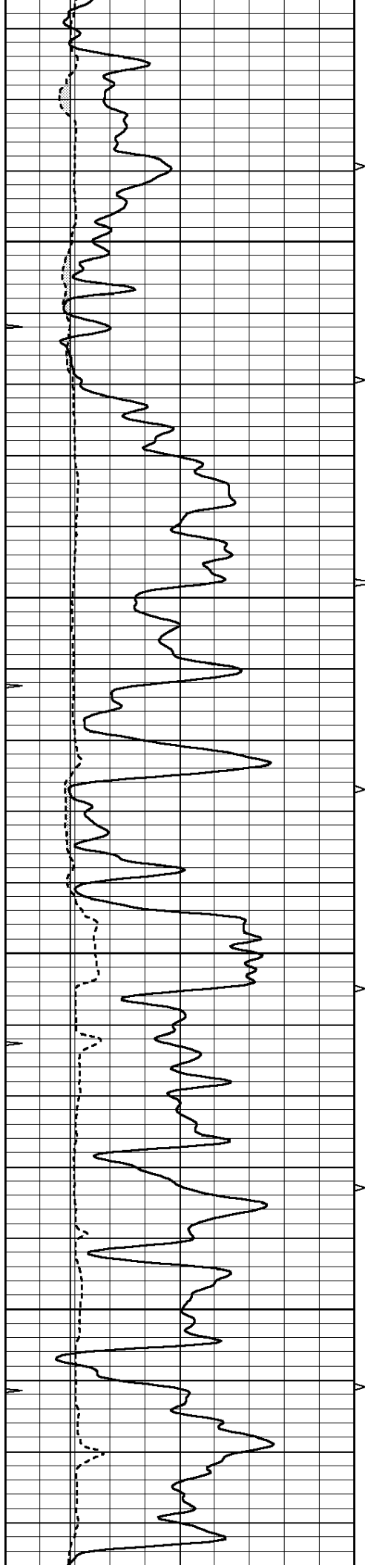
Database File: 2117ddn.db
 Dataset Pathname: pass7
 Presentation Format: _micro
 Dataset Creation: Mon Dec 11 06:32:21 2017 by Log Open-Cased 090629
 Charted by: Depth in Feet scaled 1:240

0	GAMMA RAY (GAPI)	150	ABHV	0	MEL1.5 (Ohm-m)	40
6	CALIPER (in)	16	10 (ft3)	0	MEL2.0 (Ohm-m)	40
0	MINMK	20	TBHV			
			0 (ft3)	10		







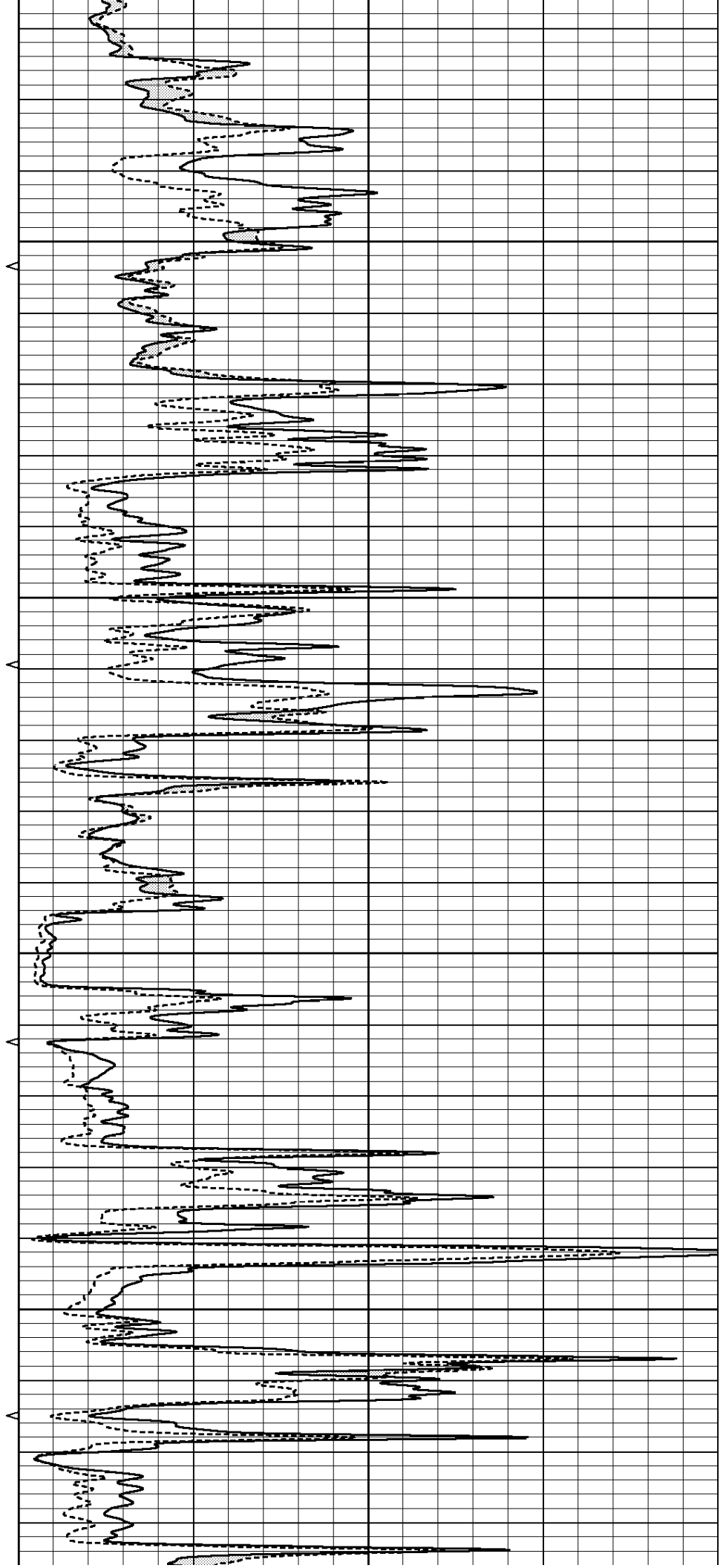


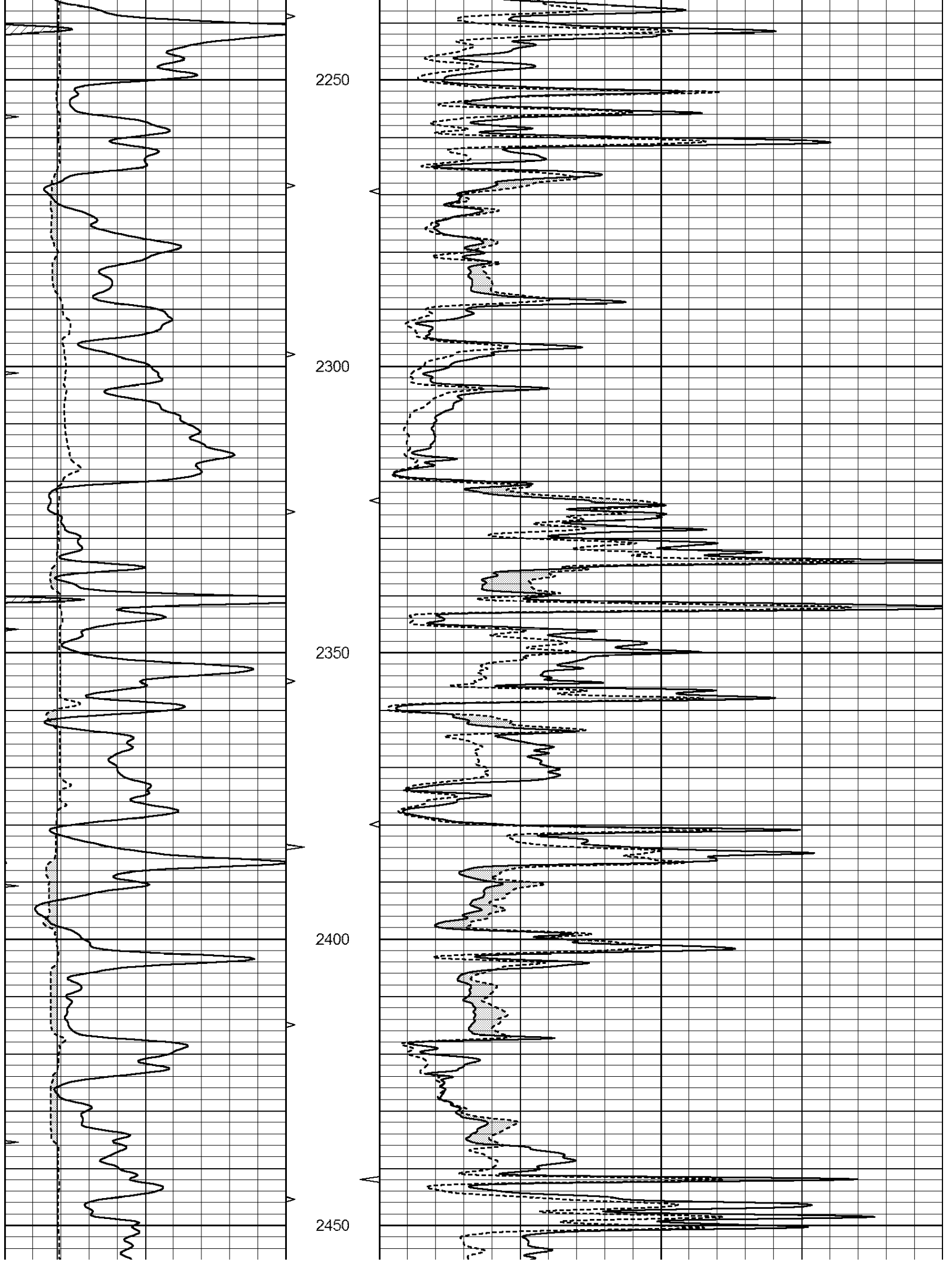
2050

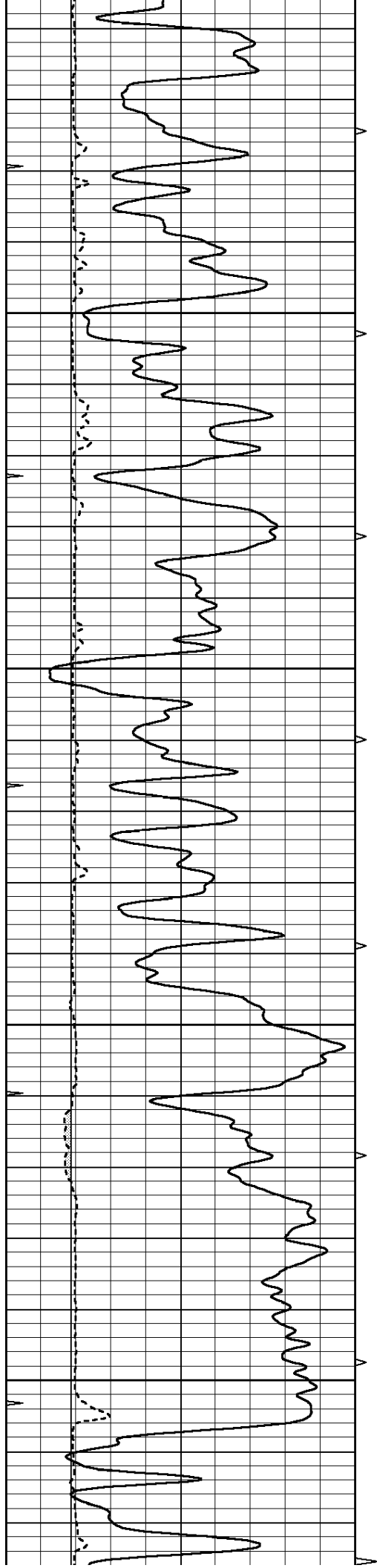
2100

2150

2200





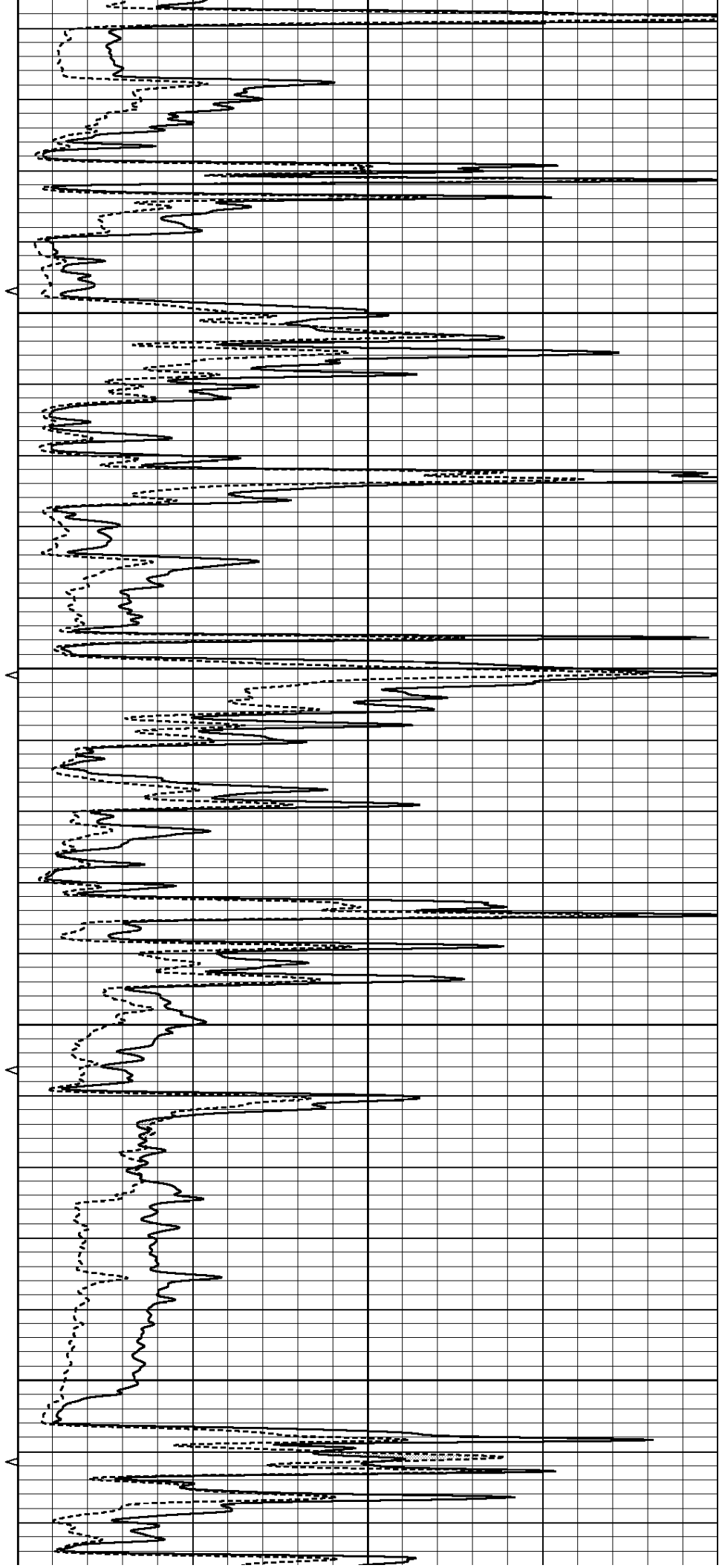


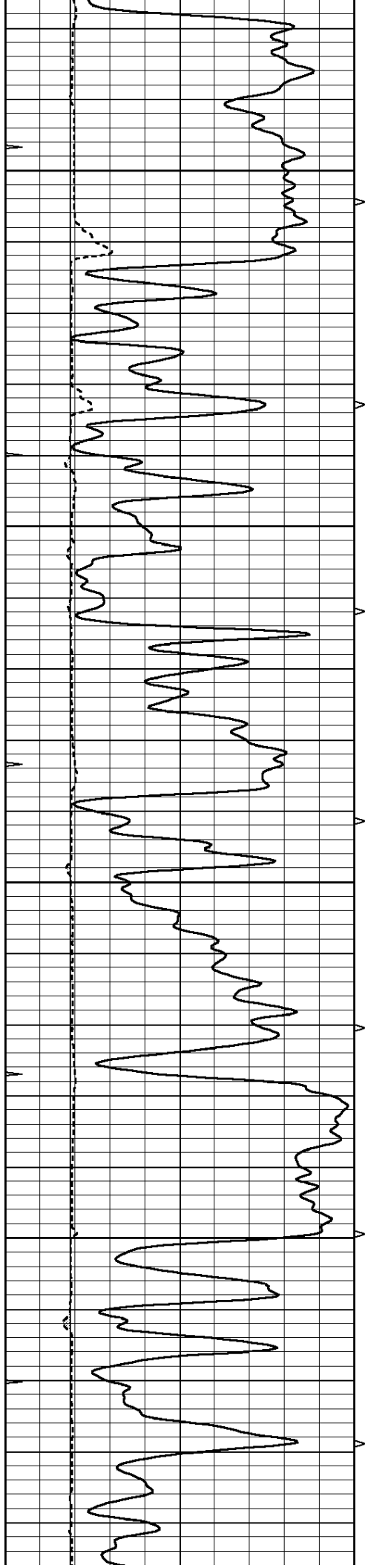
2500

2550

2600

2650



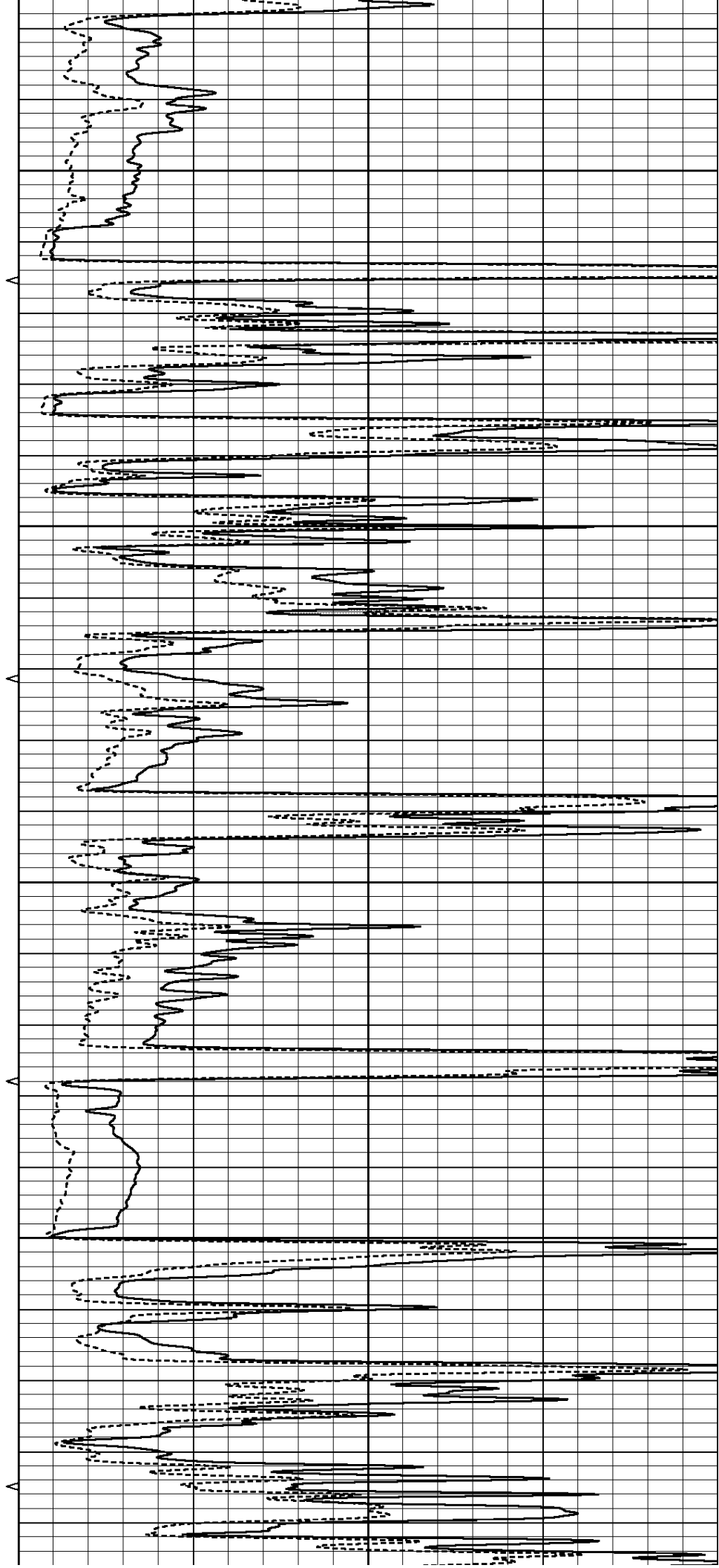


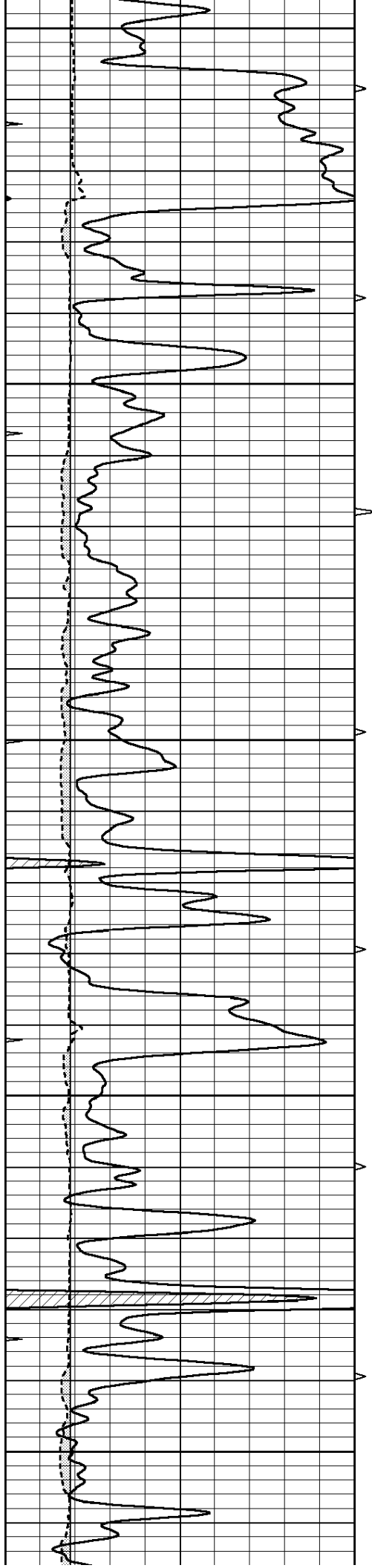
2700

2750

2800

2850





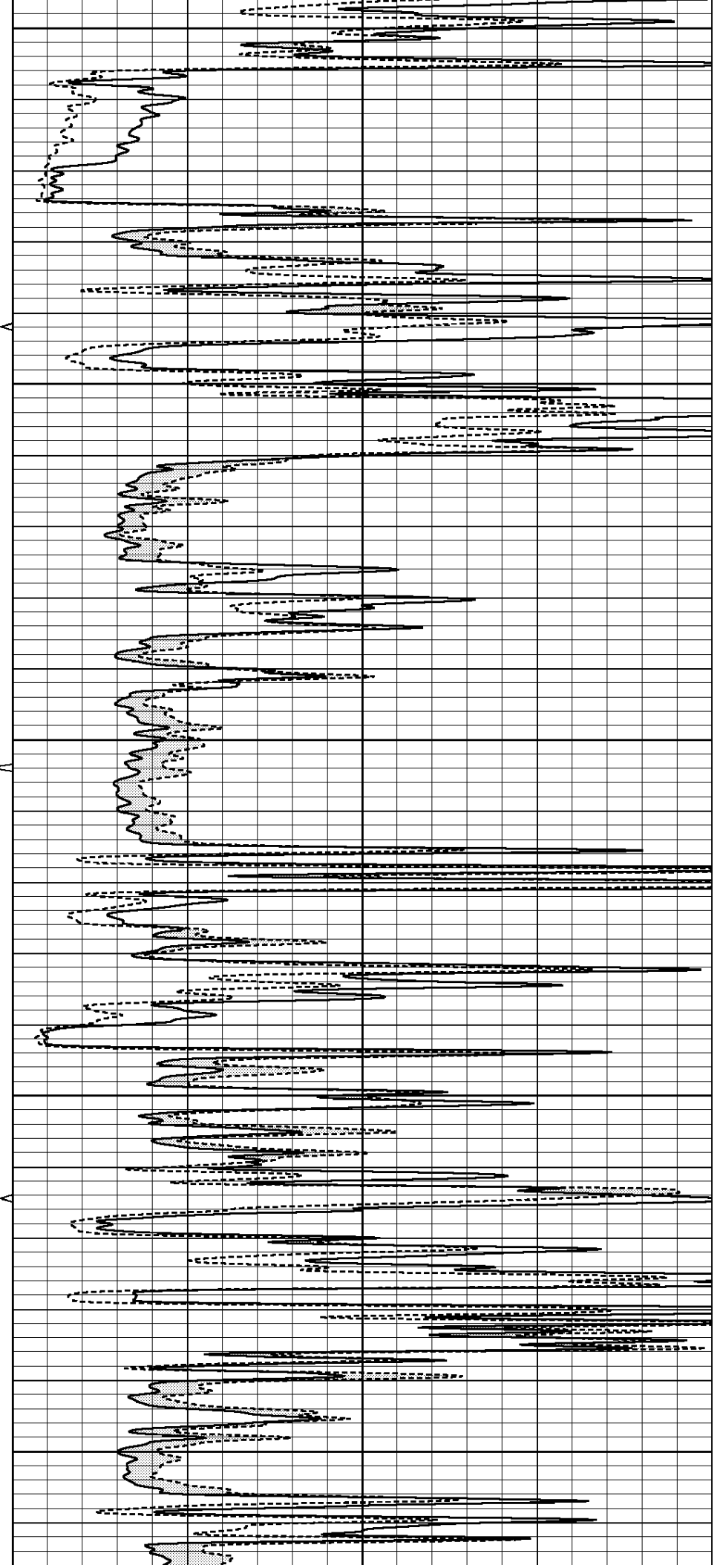
2900

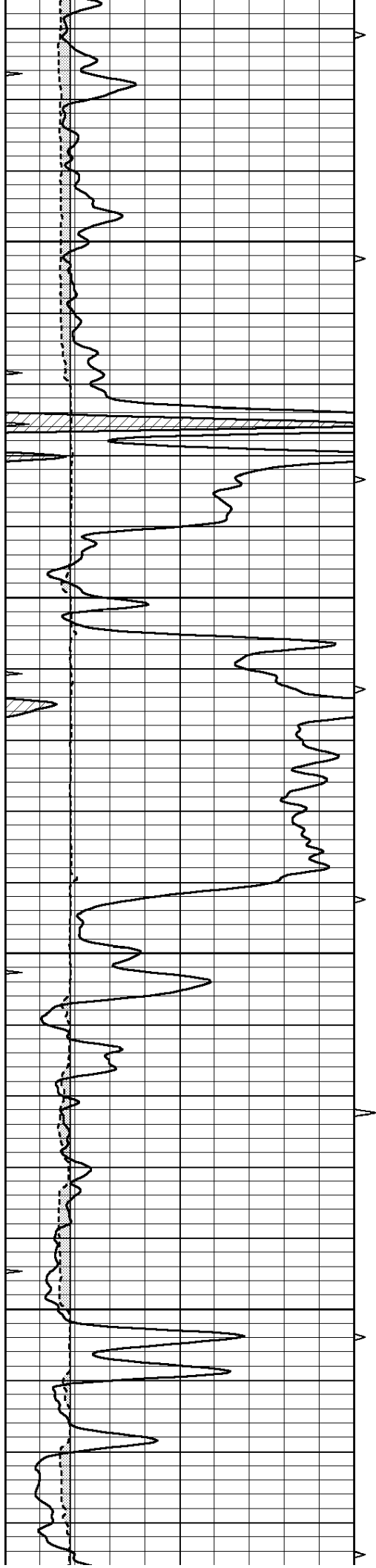
2950

3000

3050

3100



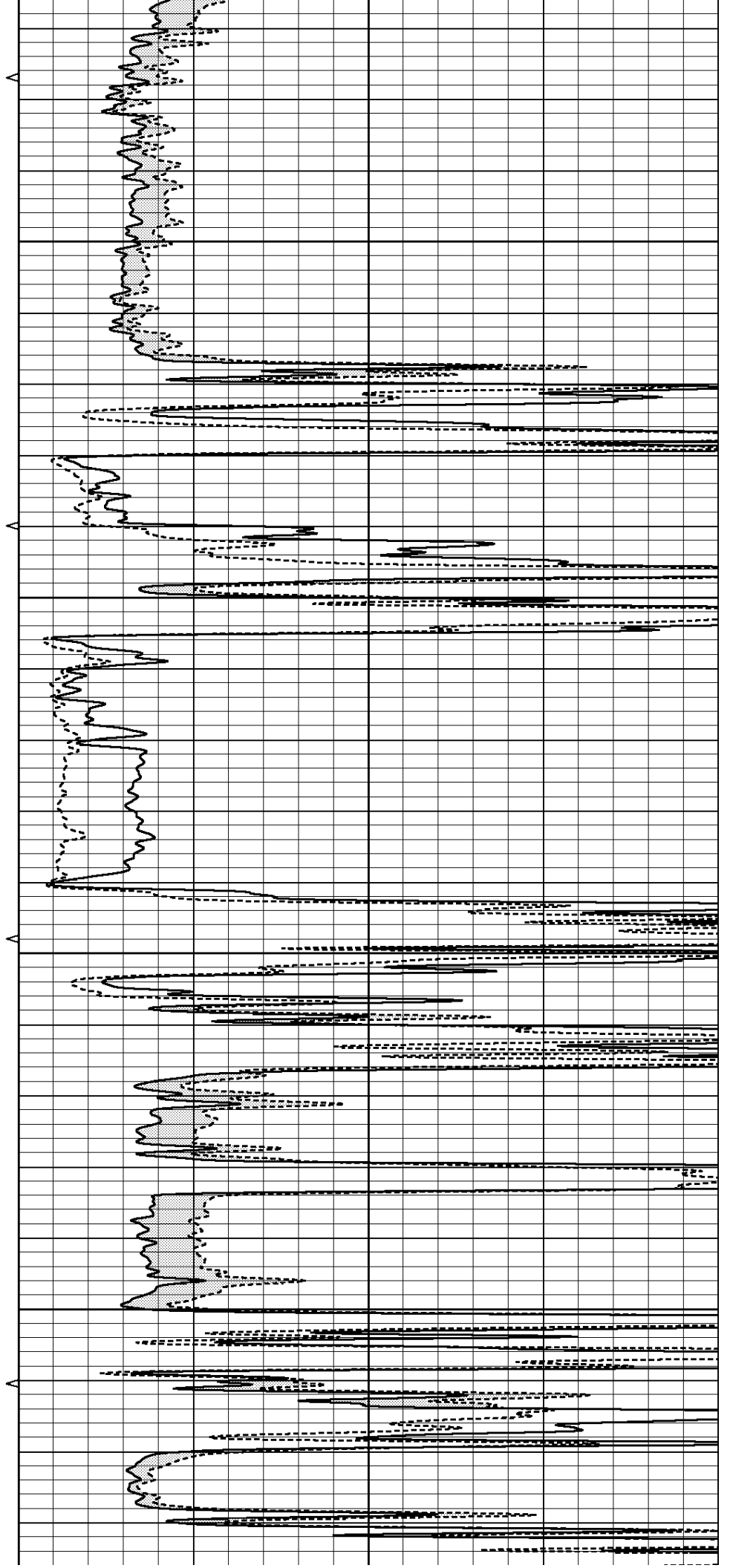


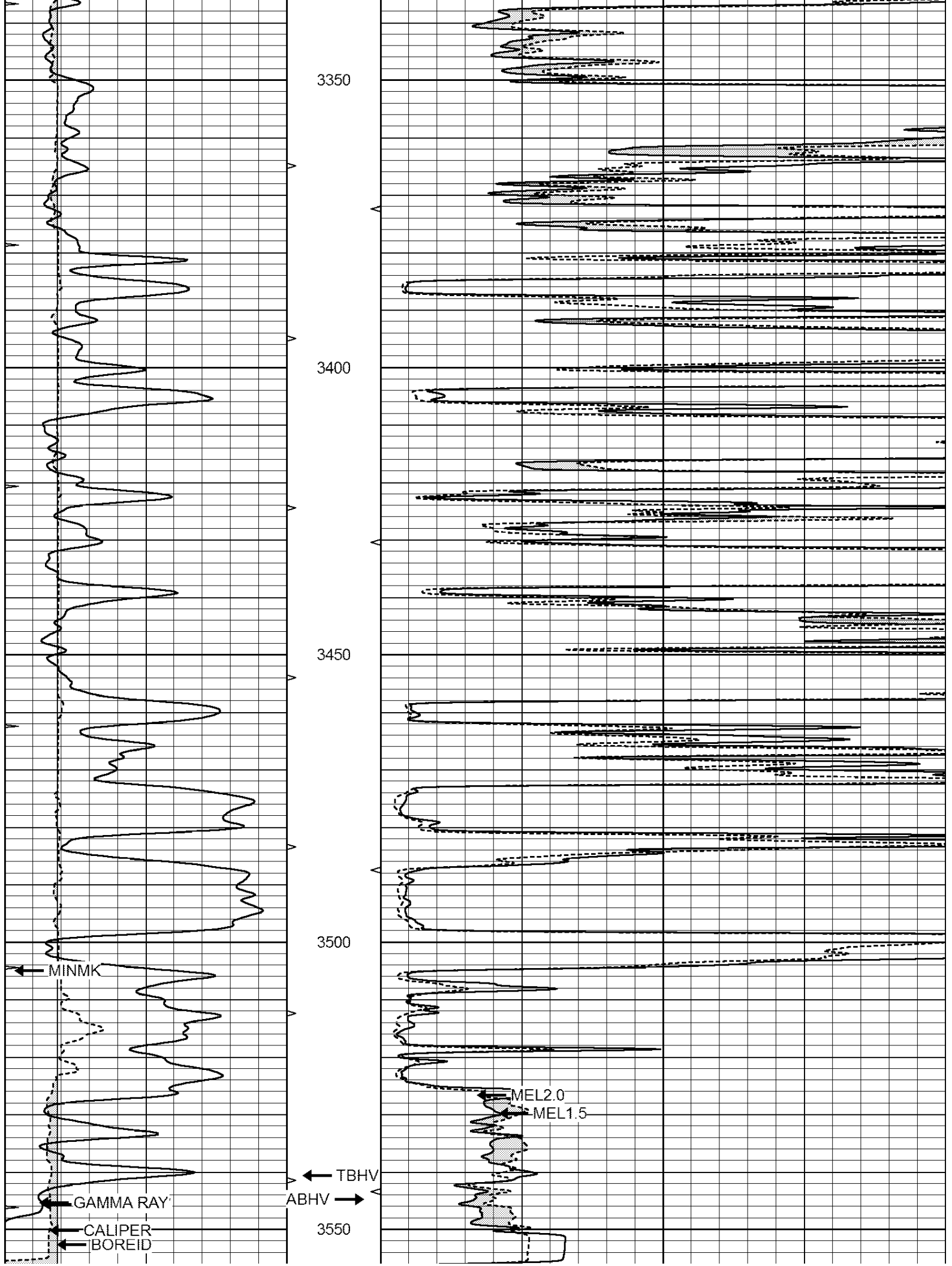
3150

3200

3250

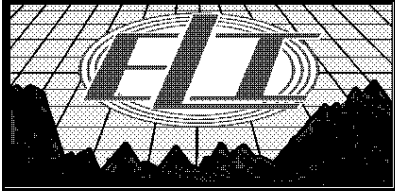
3300





LTD 3570

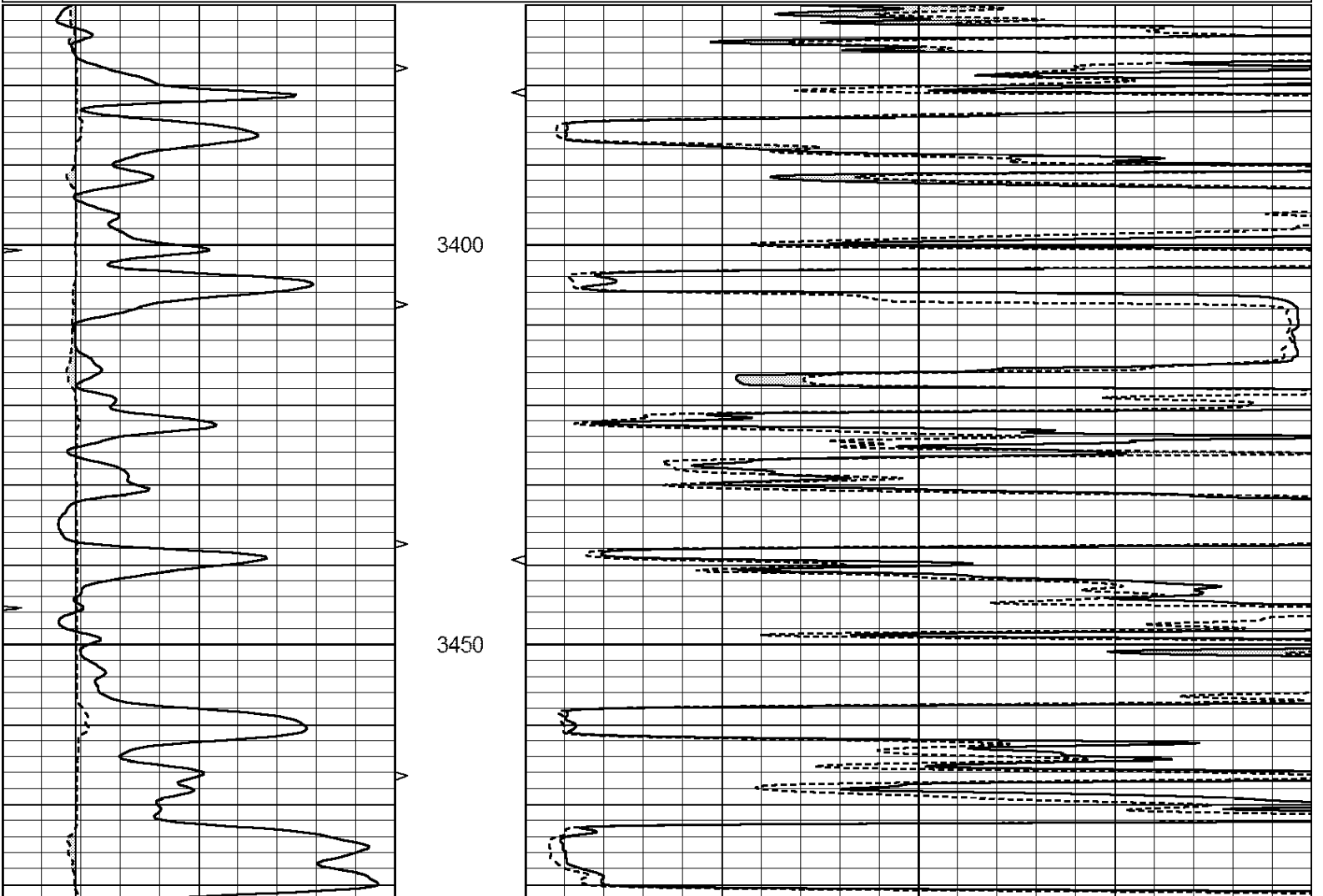
0	GAMMA RAY (GAPI)	150	ABHV	0	MEL1.5 (Ohm-m)	40
6	CALIPER (in)	16	10 (ft3)	0	MEL2.0 (Ohm-m)	40
0	MINMK	20	TBHV			
			0 (ft3)	10		

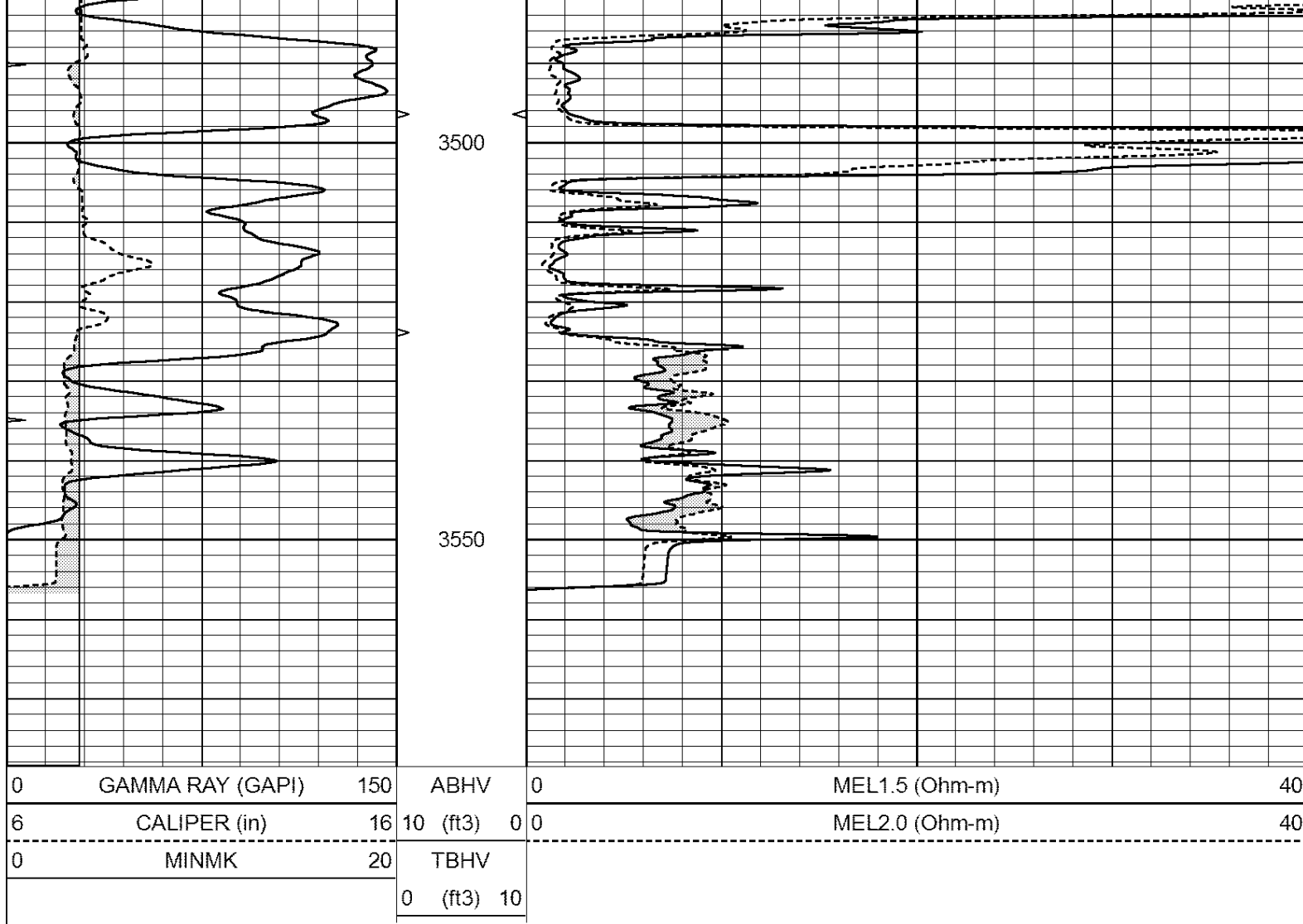


REPEAT SECTION

Database File: 2117ddn.db
Dataset Pathname: pass6RP
Presentation Format: _micro
Dataset Creation: Mon Dec 11 06:55:33 2017
Charted by: Depth in Feet scaled 1:240

0	GAMMA RAY (GAPI)	150	ABHV	0	MEL1.5 (Ohm-m)	40
6	CALIPER (in)	16	10 (ft3)	0	MEL2.0 (Ohm-m)	40
0	MINMK	20	TBHV			
			0 (ft3)	10		





Calibration Report

Database File: 2117ddn.db
 Dataset Pathname: pass6RP
 Dataset Creation: Mon Dec 11 06:55:33 2017

MICRO Calibration Report

Serial Number: MICRO6
 Tool Model: PROBE
 Performed: Wed Aug 16 17:13:39 2017

Caliper Calibration: Gain=3.960 Offset=4.551

References	Low Cal	High Cal
Readings	7.000	14.000
	0.555	2.323

1.5" Calibration: Gain=38.075 Offset=-0.400

References	Low Cal	High Cal
Readings	0.000	20.000
	0.004	1.196

2" Calibration: Gain=48.000 Offset=-1.000

References	Low Cal	High Cal
Readings	0.000	20.000
	0.006	0.913

Gamma Ray Calibration Report

Serial Number: GR2
Tool Model: OPEN
Performed: Wed Aug 16 17:13:40 2017

Calibrator Value: 1.0 GAPI

Background Reading: 0.0 cps
Calibrator Reading: 1.0 cps

Sensitivity: 0.3800 GAPI/cps