



MIDWEST SURVEYS
 LOGGING - PERFORATING - CONSULTING SERVICES
 P.O. Box 66, Osawatomie, KS 66064
 913 / 755 - 2128

GAMMA RAY / NEUTRON / CCL

File No.

Company **Ron Wrestler**

Well **Mynatt No.-31**

Field **Humboldt / Chanute**

County **Allen** State **Kansas**

Location **825' FNL & 1320' FWL**

Location **N/2-S/2-N/2-NW**

Sec. **13** Twp. **26S** Rge. **19E**

Permanent Datum **GL** Elevation **994'**

Log Measured From **GL** Elevation **994'**

Drilling Measured From **GL** Elevation **994'**

Date **01-04-2018**

Run Number **One**

Depth Driller **800.0**

Depth Logger **763.5**

Bottom Logged Interval **762.5**

Top Log Interval **20.0**

Fluid Level **Full**

Type Fluid **Water**

Density / Viscosity **NA**

Salinity - PPM Cl **NA**

Max Recorded Temp **NA**

Estimated Cement Top **0.0**

Equipment No. **104** Location **Osawatomie**

Recorded By **Gary Winiwisch**

Witnessed By **Ron Wrestler**

BORE-HOLE RECORD		CASING RECORD	
RUN No.	BIT FROM TO	SIZE FROM TO	WGT. FROM TO
One	12.00" 20.0	8.625" 24.0	0.0 0.0
Two	6.75" 20.0	2.875" 6.5	0.0 0.0
			TO 20.0
			768.0

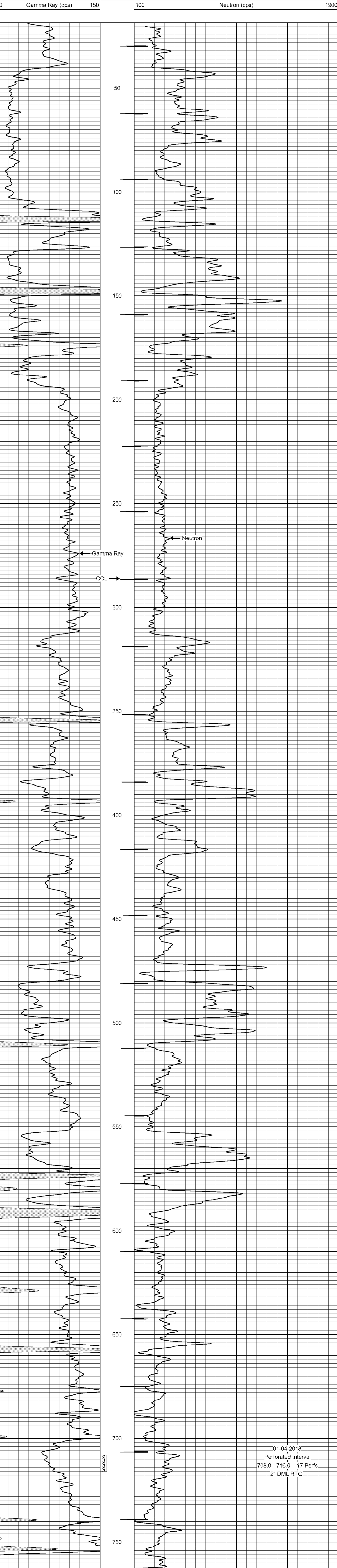
<<< Fold Here >>>

All interpretations are opinions based on inferences from electrical or other measurements and we cannot and do not guarantee the accuracy or correctness of any interpretation, and we shall not, except in the case of gross or willful negligence on our part, be liable or responsible for any loss, costs, damages, or expenses incurred or sustained by anyone resulting from any interpretation made by any of our officers, agents or employees. These interpretations are also subject to our general terms and conditions set out in our current Price Schedule.

Comments

Drilling Contractor :
 David Wrestler

Database File: mynatt 31.db
 Dataset Pathname: pass1
 Presentation Format: gr-n-ccl
 Dataset Creation: Thu Jan 04 11:27:59 2018 by Log SCH 111116
 Charted by: Depth in Feet scaled 1:240



01-04-2018
 Perforated Interval
 708.0 - 716.0 17 Perfs
 2" DML RTG