



**GAMMA RAY  
NEUTRON  
COMPLETION LOG**

Company TAILWATER, INC.  
Well NORTH KEMPNIICH #14-IWU  
Field GARNETT SHOESTRING  
County ANDERSON  
State KANSAS

Company TAILWATER, INC.  
Well NORTH KEMPNIICH #14-IWU  
Field GARNETT SHOESTRING  
County ANDERSON State KANSAS

Location: API # : 15-003-26238-00-00 Other Services  
1515' FNL & 2345' FWL  
NE NE SE NW  
SEC 22 TWP 20S RGE 20E  
Permanent Datum G.L. Elevation 951'EST.  
Log Measured From G.L.  
Drilling Measured From G.L.

Date	10-20-2014		
Run Number	1-NEWWELL		
Depth Driller	734'		
Depth Logger	717.5'		
Top Log Interval	SURFACE		
Bottom Logged Interval	717.5'		
Fluid Level	FULL		
Type Fluid	WATER		
Production Casing	2 7/8" @ 724'	7" @ 22.2'	@
Max. Recorded Temp.			
Estimated Cement Top			
Calculated Cement Top			
Amount & Type Cement			
Amount & Type Admix			
Drilling Contractor	EVANS ENERGY		
Equipment Number	107		
Location			
Recorded By	UDEN, D.		
Witnessed By	HUTCHINSON, D.		

<<< Fold Here >>>

All interpretations are opinions based on inferences from electrical or other measurements and we cannot and do not guarantee the accuracy or correctness of any interpretation, and we shall not, except in the case of gross or willful negligence on our part, be liable or responsible for any loss, costs, damages, or expenses incurred or sustained by anyone resulting from any interpretation made by any of our officers, agents or employees. These interpretations are also subject to our general terms and conditions set out in our current Price Schedule.

Comments

THANK YOU

Sensor	Offset (ft)	Schematic	Description	Len (ft)	OD (in)	Wt (lb)

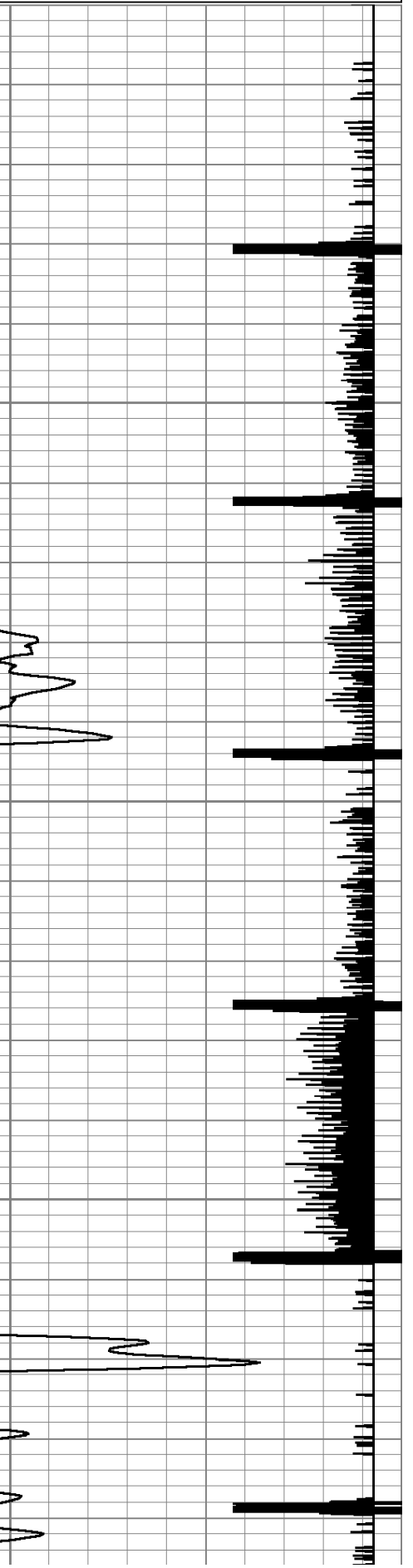
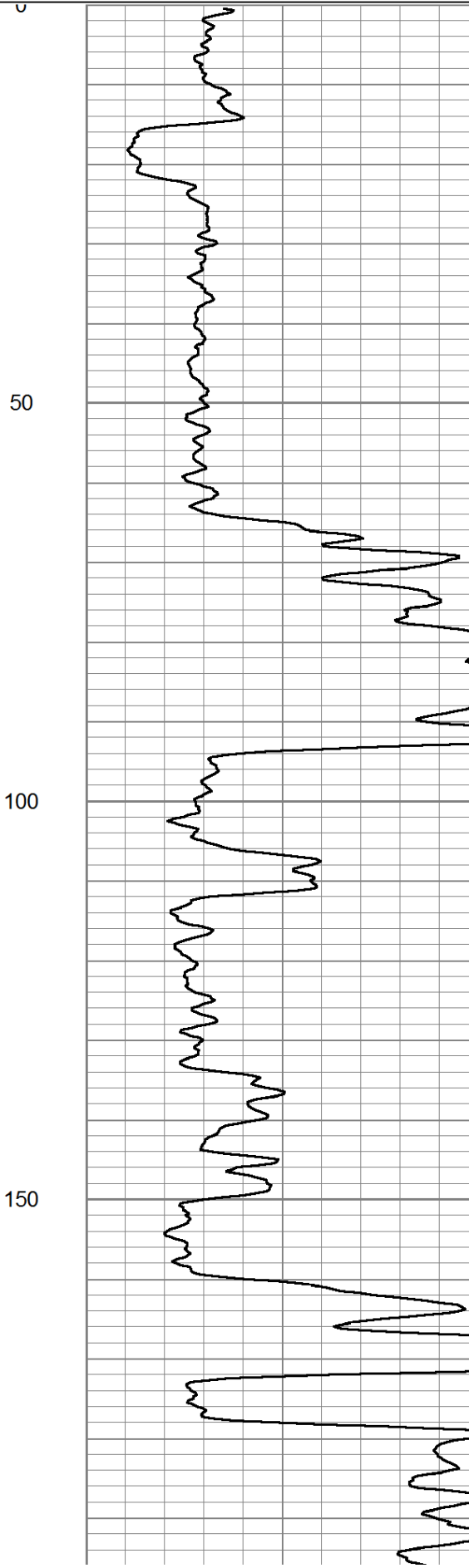
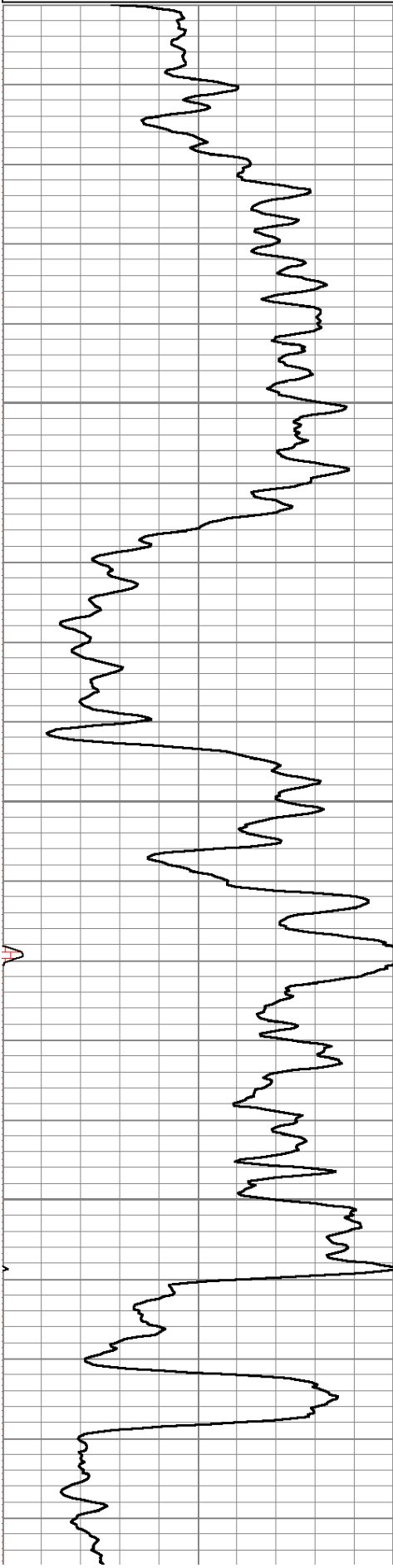
GR	7.59	GR-TITAN_169 (TIT169_001) Titan 1 11/16" Gamma Ray	4.75	1.69	20.00
CCL	5.05	CCL-TITAN_169 (TIT169) Titan 1 11/16" Logging CCL	1.83	1.69	7.50
NEU	0.63	NEU-TITAN_169 (TIT169_001) Titan 1 11/16" Neutron	4.33	1.69	20.00

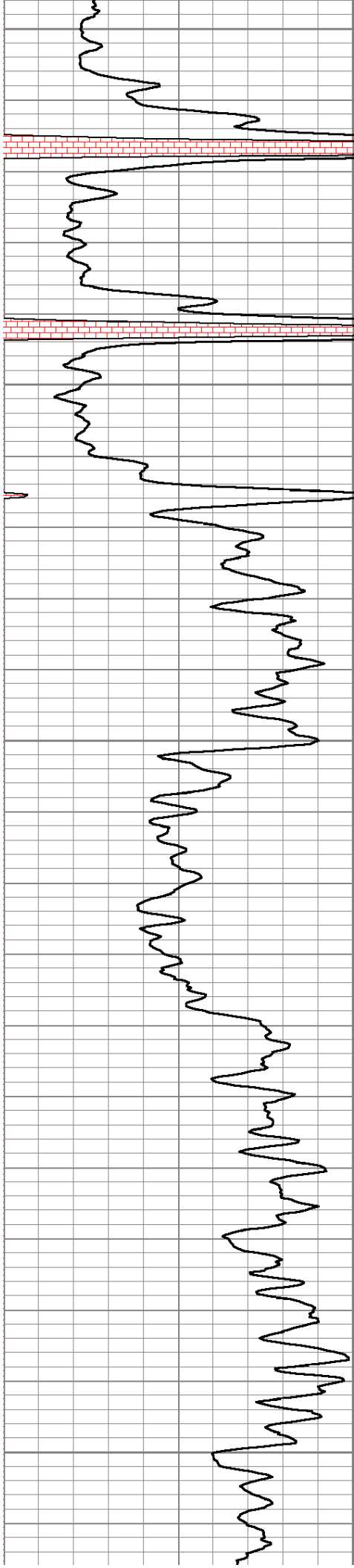
Dataset: north kempnich #14-iwu.db: field/well/run1/pass2  
 Total Length: 10.92 ft  
 Total Weight: 47.50 lb  
 O.D.: 1.69 in

Database File: e:\north kempnich #14-iwu.db  
 Dataset Pathname: pass2  
 Presentation Format: gr-n-ccl

0	GR	150
150	gr	300

100	NEU	1500
13	CCL	-1





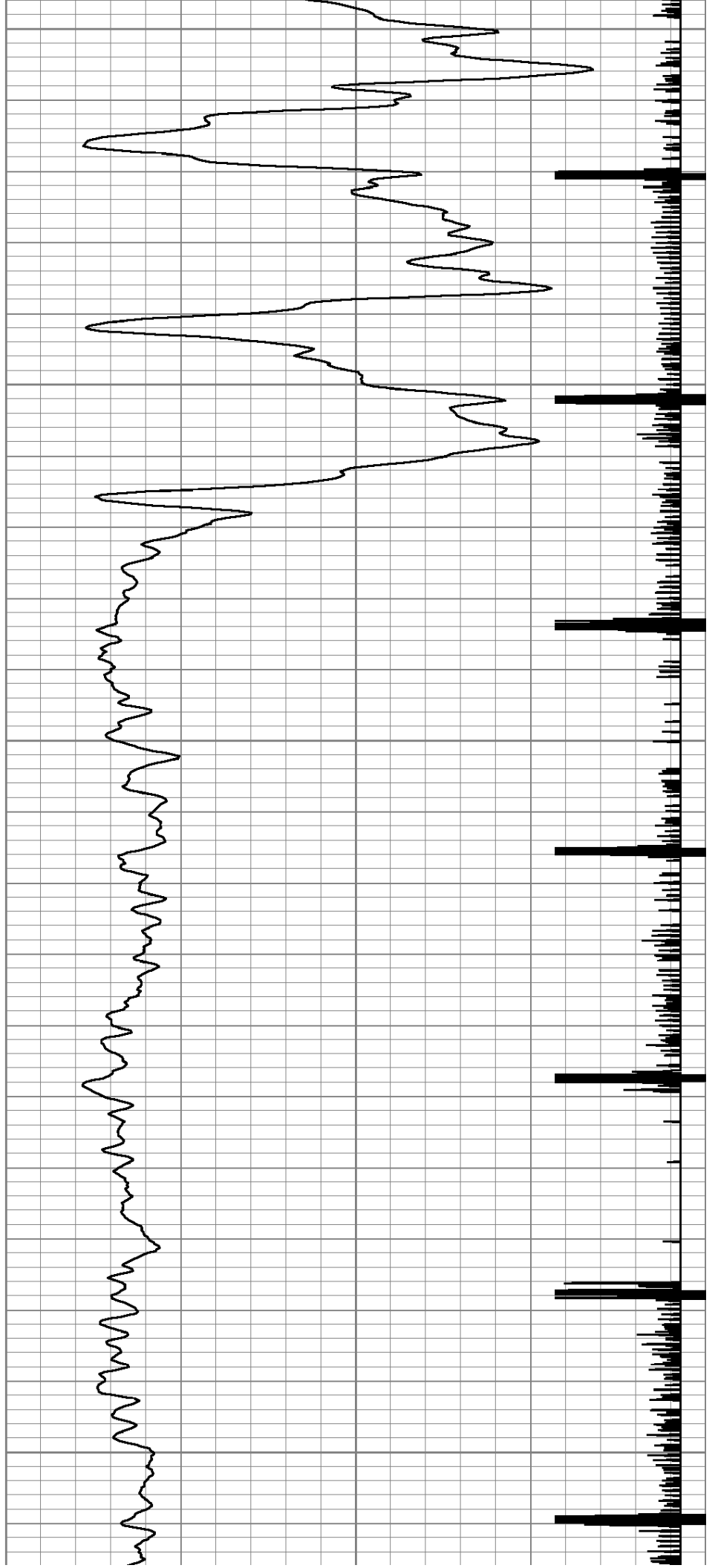
200

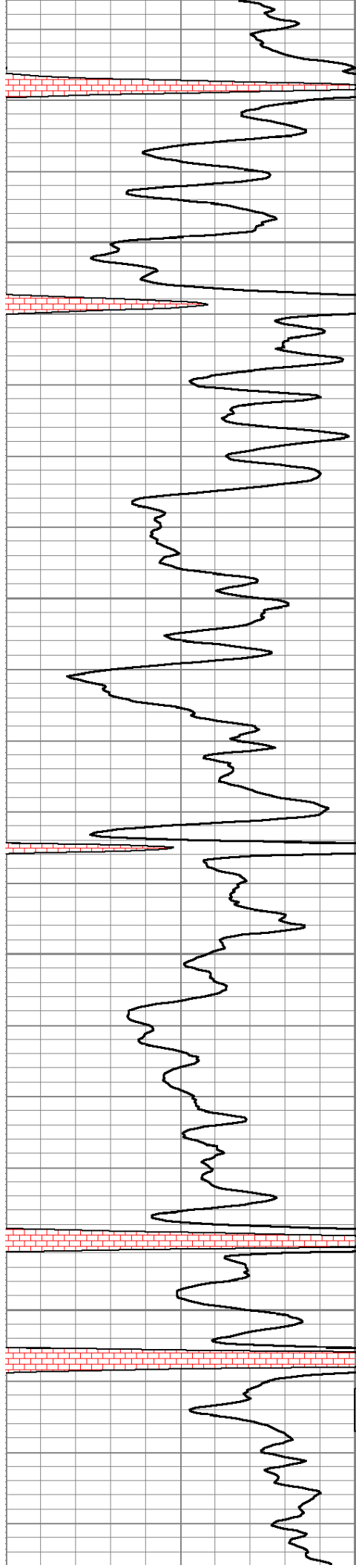
250

300

350

400





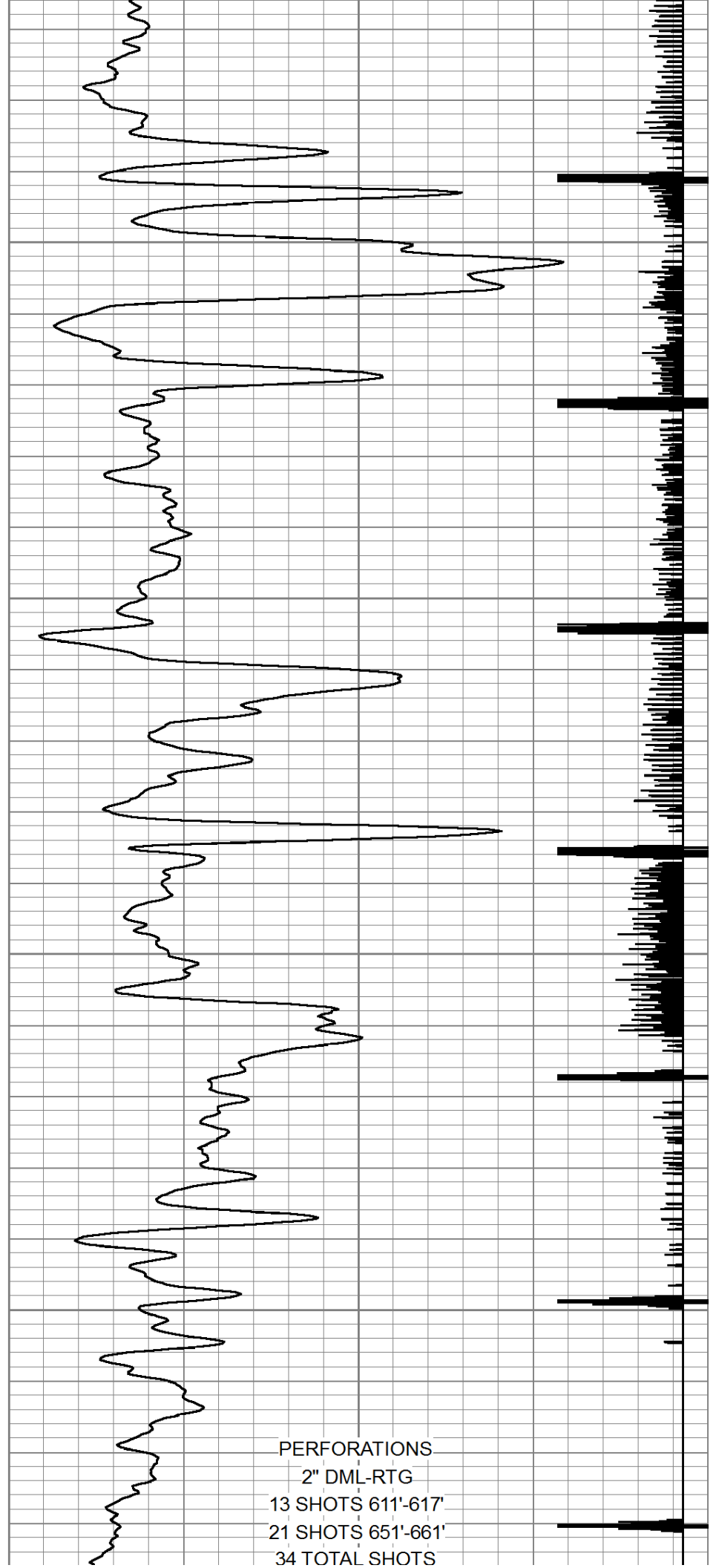
450

500

550

600

60000



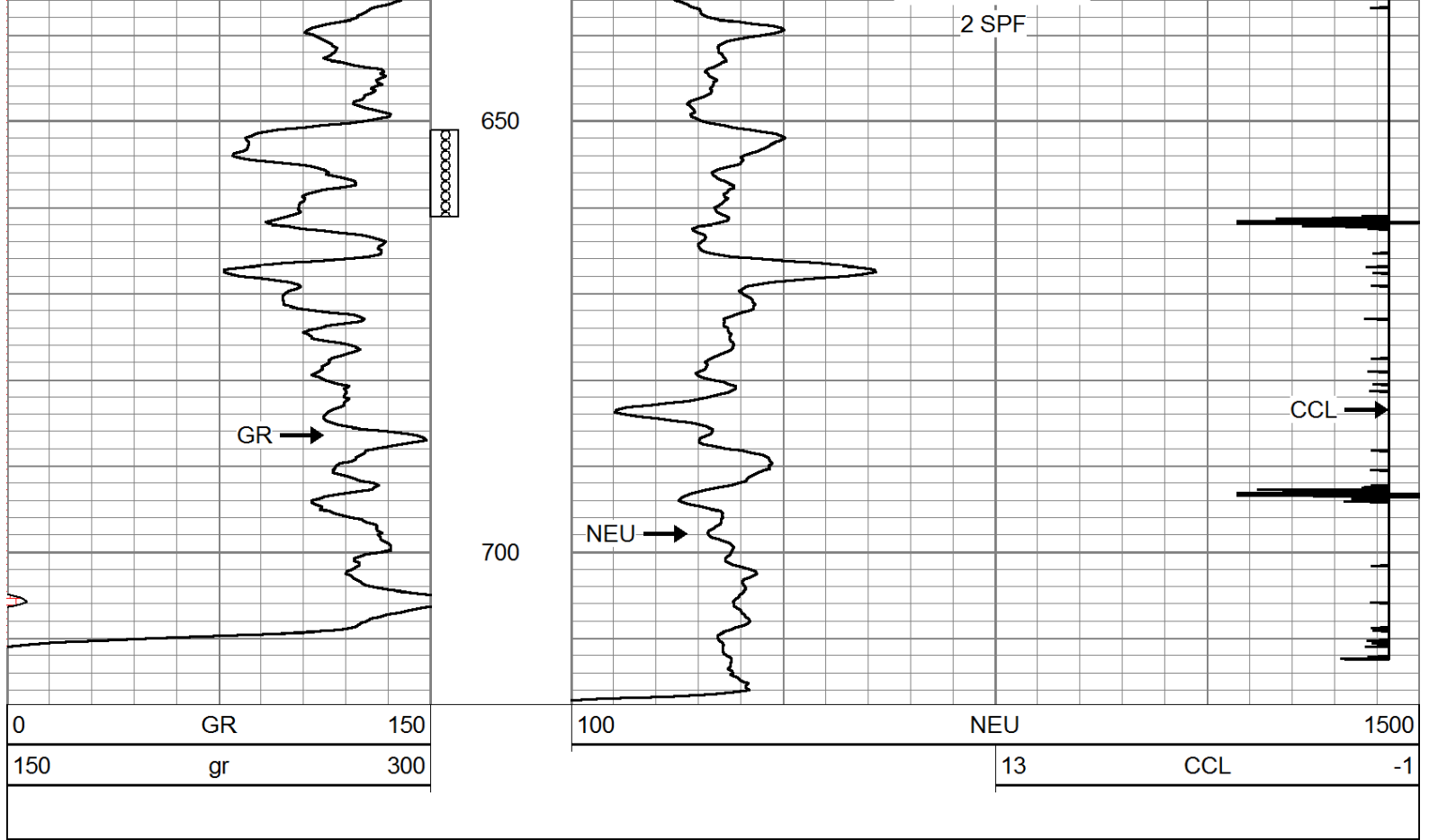
PERFORATIONS

2" DML-RTG

13 SHOTS 611'-617'

21 SHOTS 651'-661'

34 TOTAL SHOTS



Company	TAILWATER, INC.
Well	NORTH KEMPNIICH #14-IWU
Field	GARNETT SHOESTRING
County	ANDERSON SEC. 22 TWP. 20S RGE. 20E
State	KANSAS Date 10-20-2014