



**MIDWEST SURVEYS**  
 LOGGING - PERFORATING - CONSULTING SERVICES  
 P.O. Box 85, Osawatomie, KS 66064  
 913 / 755 - 2128

**GAMMA RAY / NEUTRON / CCL**

File No. \_\_\_\_\_

Company **Altavista Energy, Inc.**

Well **Windler No. A-43**

Field **Block**

County **Miami** State **Kansas**

Location **4270' FSL & 4515' FEL  
SW-SE-NW-NW**

Other Services **Perforate**

Sec 21 Twp 18S Rge 24E  
 Permament Datum **GL** Elevation **938'**  
 Log Measured From **GL**  
 Drilling Measured From **GL**  
 Date **12-01-2017**

Run Number **One**

Depth Driller **560.0**

Depth Logger **516.5**

Bottom Logged Interval **515.5**

Top Log Interval **20.0**

Fluid Level **Full**

Type Fluid **Water**  
 Density / Viscosity **NA**  
 Salinity - PPM Cl **NA**  
 Max Recorded Temp **NA**  
 Estimated Cement Top **0.0**  
 Equipment No. **104** Location **Osawatomie**  
 Recorded By **Gary Windisch**  
 Witnessed By **Doug Evans**

RUN No.	BORE-HOLE RECORD			CASING RECORD			
	BIT	FROM	TO	SIZE	WGT.	FROM	TO
One	9.875"	0.0	20.0	7.00"	17.0	0.0	20.0
Two	5.625"	20.0	560.0	2.875"	6.5	0.0	551.55
				Barite	Set	At	519.65

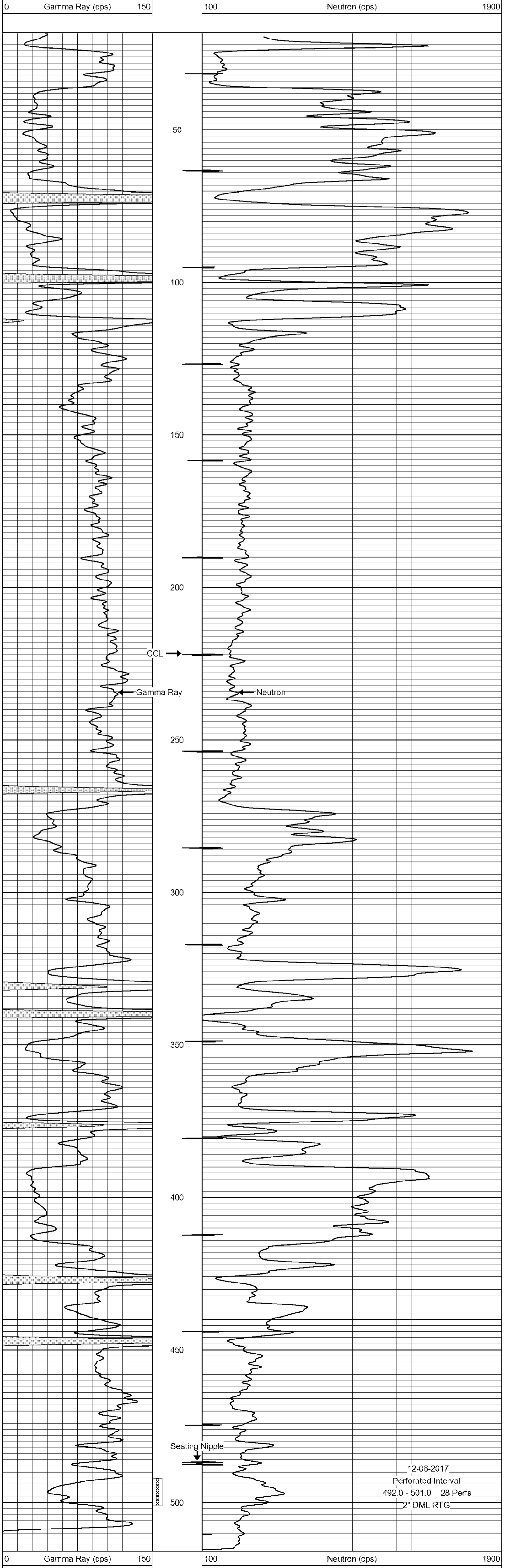
<<< Fold Here >>>

All interpretations are opinions based on inferences from electrical or other measurements and we cannot and do not guarantee the accuracy or correctness of any interpretation, and we shall not, except in the case of gross or willful negligence on our part, be liable or responsible for any loss, costs, damages, or expenses incurred or sustained by anyone resulting from any interpretation made by any of our officers, agents or employees. These interpretations are also subject to our general terms and conditions set out in our current Price Schedule.

**Comments**

Drilling Contractor :  
**Town Oilfield Services, Inc.**

Database File: windler 43a.db  
 Dataset Pathname: pass 1  
 Presentation Format: gr-n-ccl  
 Dataset Creation: Fri Dec 01 08:49:32 2017 by Log SCH 111116  
 Charted by: Depth in Feet scaled 1:240



12-06-2017  
 Perforated Interval  
 492.0 - 501.0 28 Perfs  
 2" DML RTG