



**MIDWEST SURVEYS**  
 LOGGING - PERFORATING - CONSULTING SERVICES  
 P.O. Box 68, Osawatomie, KS 66064  
 913 / 755 - 2128

**GAMMA RAY / NEUTRON / CCL**

File No. \_\_\_\_\_

Company **Altavista Energy, Inc.**

Well **Windler No. A-42**

Field **Block**

County **Miami** State **Kansas**

Location **4830' FSL & 4515' FEL  
SW-NE-NW/1NW**

Other Services  
**Perforate**

Sec. 21 Twp. 18S Rge. 24E  
 Permanent Datum GL Elevation 930'  
 Log Measured From GL  
 Drilling Measured From GL

Elevation  
 KB NA  
 DF NA  
 GL 930'

Date **12-01-2017**

Run Number **One**

Depth Driller **560.0**

Depth Logger **509.2**

Bottom Logged Interval **508.2**

Top Log Interval **20.0**

Fluid Level **Full**

Type Fluid **Water**  
 Density / Viscosity **NA**  
 Salinity - PPM Cl **NA**  
 Max Recorded Temp **NA**  
 Estimated Cement Top **0.0**

Equipment No. **104** Location **Osawatomie**

Recorded By **Gary Windisch**

Witnessed By **Doug Evans**

BORE-HOLE RECORD				CASING RECORD			
Run No.	BIT FROM	TO	SIZE	WGT.	FROM	TO	
One	9.875"	0.0	7.00"	17.0	0.0	20.0	543.45
Two	5.625"	20.0	2.875"	6.5	0.0	511.75	

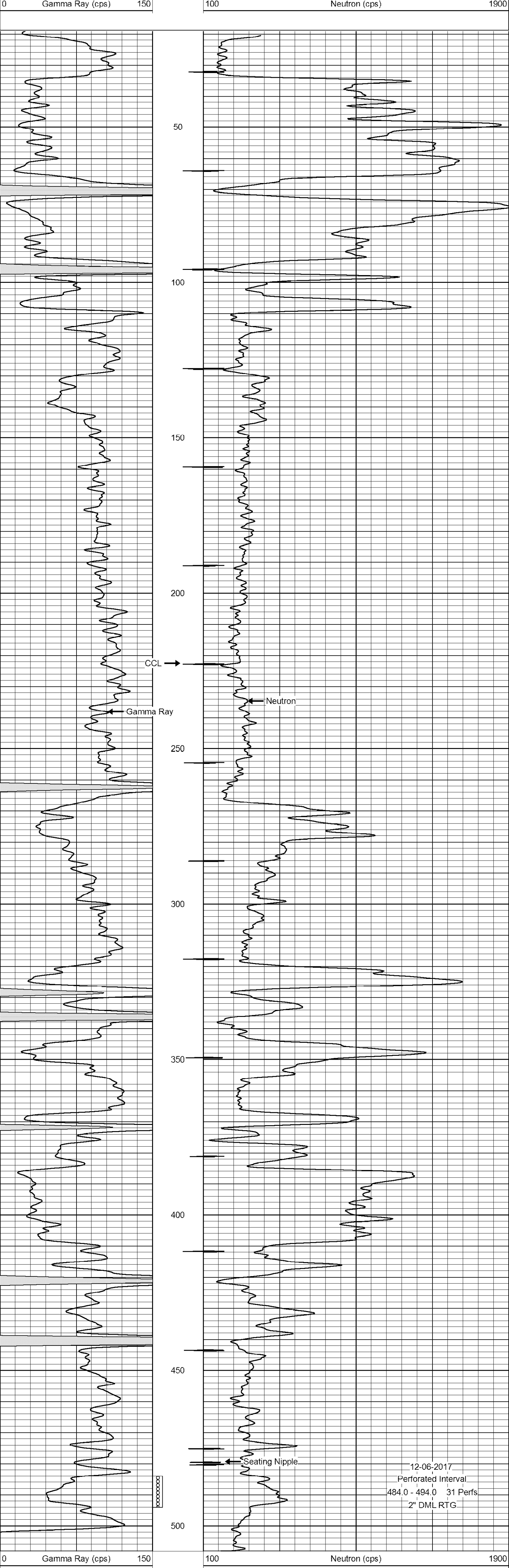
<<< Fold Here >>>

All interpretations are opinions based on inferences from electrical or other measurements and we cannot and do not guarantee the accuracy or correctness of any interpretation, and we shall not, except in the case of gross or willful negligence on our part, be liable or responsible for any loss, costs, damages, or expenses incurred or sustained by anyone resulting from any interpretation made by any of our officers, agents or employees. These interpretations are also subject to our general terms and conditions set out in our current Price Schedule.

**Comments**

Drilling Contractor :  
**Town Oilfield Services, Inc.**

Database File: windler 42a.db  
 Dataset Pathname: pass1  
 Presentation Format: gr-n-ccl  
 Dataset Creation: Fri Dec 01 09:36:46 2017 by Log SCH 111116  
 Charted by: Depth in Feet scaled 1:240



12-06-2017  
 Perforated Interval  
 484.0 - 494.0 31 Perfs  
 2" DML RTG