



**GAMMA RAY  
NEUTRON  
COMPLETION LOG**

Company **JOHN A. ELMORE**  
 Well **BERLIN #32**  
 Field **PERU-SEDAN**  
 County **CHAUTAUQUA** State **KANSAS**

Location: **API #: 15-019-27533-00-00**

**481' FSL & 397' FEL  
SE NE NW NW  
SEC 32 TWP 33S RGE 12E**

Other Services:

Permanent Datum	GL	Elevation	844'EST.	Elevation
Log Measured From	GL			K.B.
Drilling Measured From	GL			D.F.
				G.L. 844'EST.

Date	1-4-16		
Run Number	1 HW		
Depth Driller			
Depth Logger	1049.9'		
Top Log Interval	0		
Bottom Logged Interval	1049.9'		
Fluid Level	FULL		
Type Fluid	WATER		
Production Casing	2 7/8" @ TD	@	@
Max. Recorded Temp.			
Estimated Cement Top			
Calculated Cement Top			
Amount & Type Cement			
Amount & Type Admix			
Drilling Contractor			
Equipment Number	109		
Location			
Recorded By	SANBORN, G.		

With record Dr. E1 MADE 1

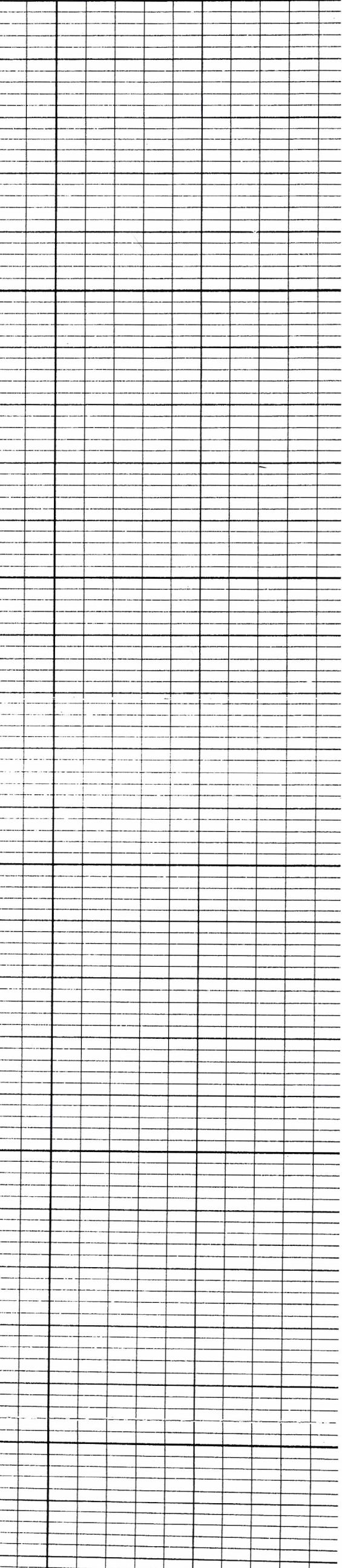
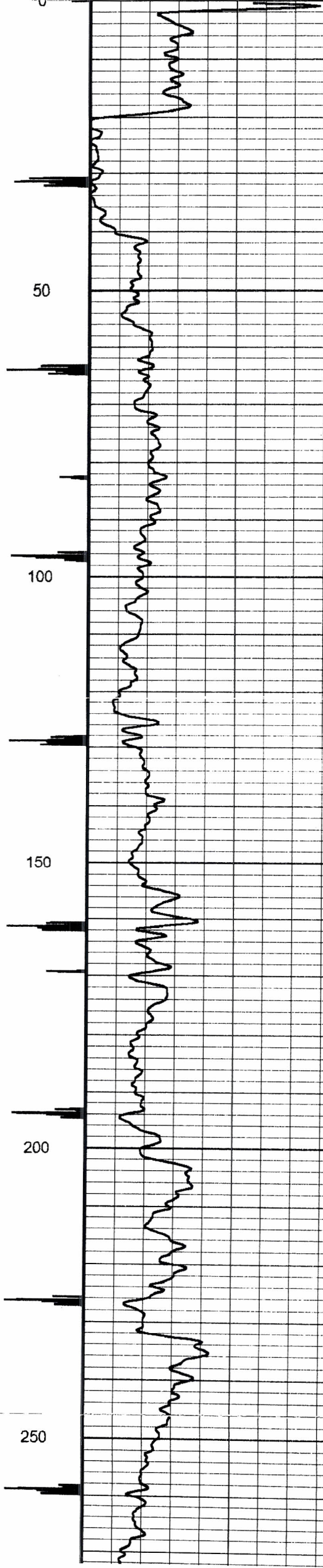
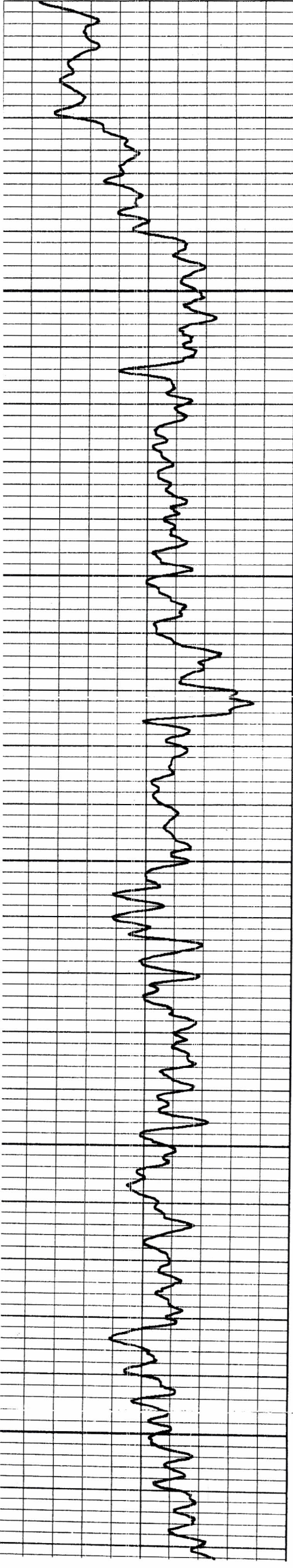
<<< Fold Here >>>

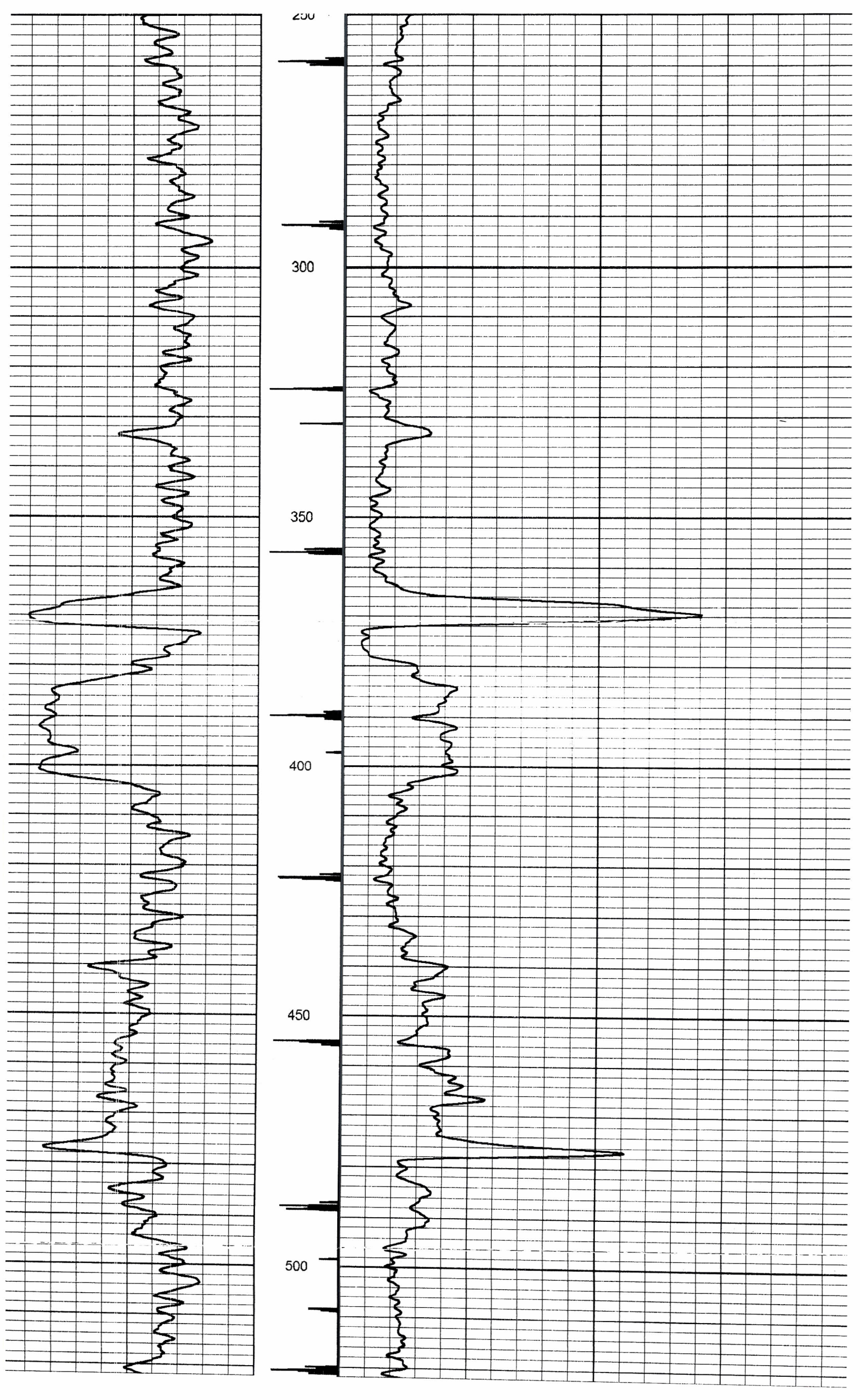
All interpretations are opinions based on inferences from electrical or other measurements and we cannot and do not guarantee the accuracy or correctness of any interpretation, and we shall not, except in the case of gross or willful negligence on our part, be liable or responsible for any loss, costs, damages, or expenses incurred or sustained by anyone resulting from any interpretation made by any of our officers, agents or employees. These interpretations are also subject to our general terms and conditions set out in our current Price Schedule.

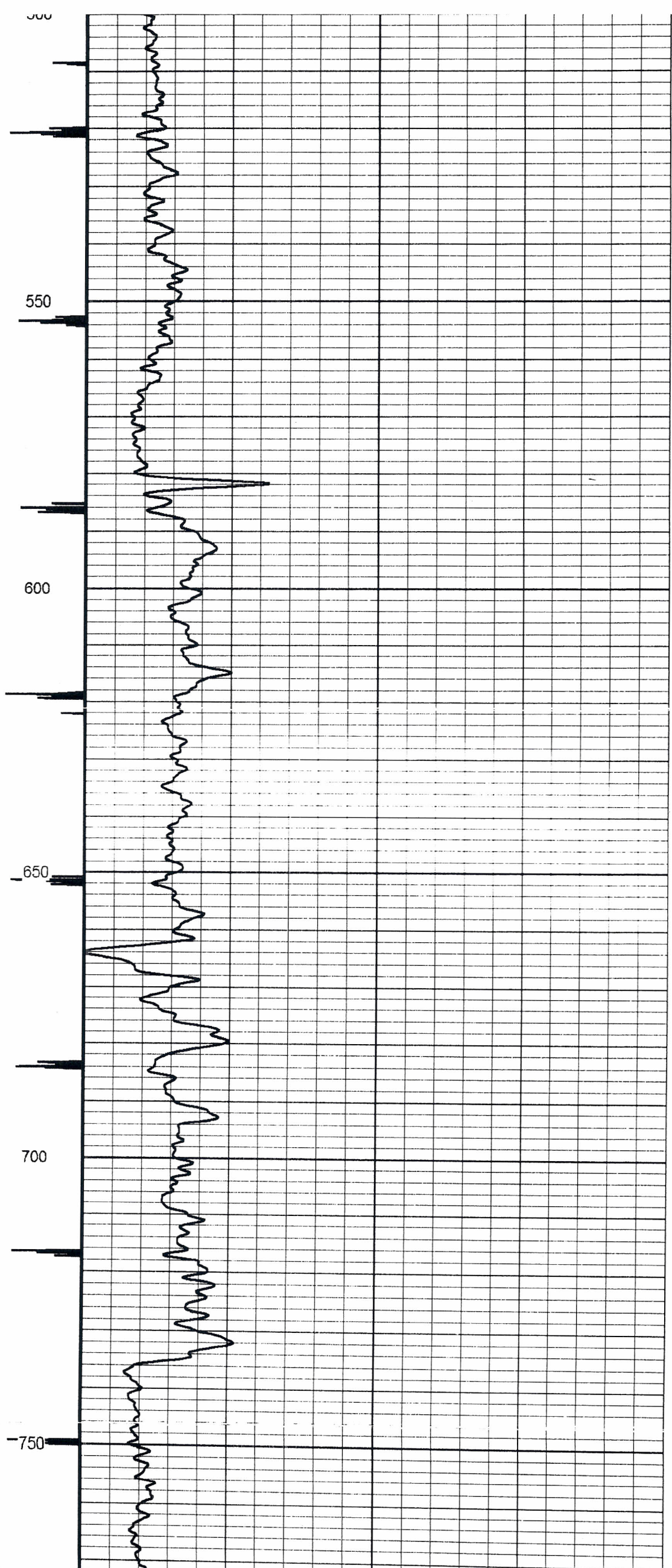
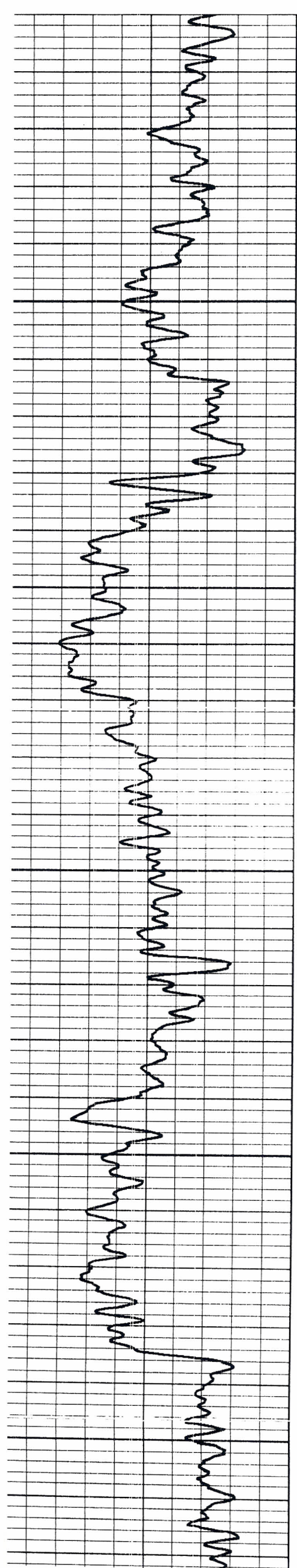
Comments

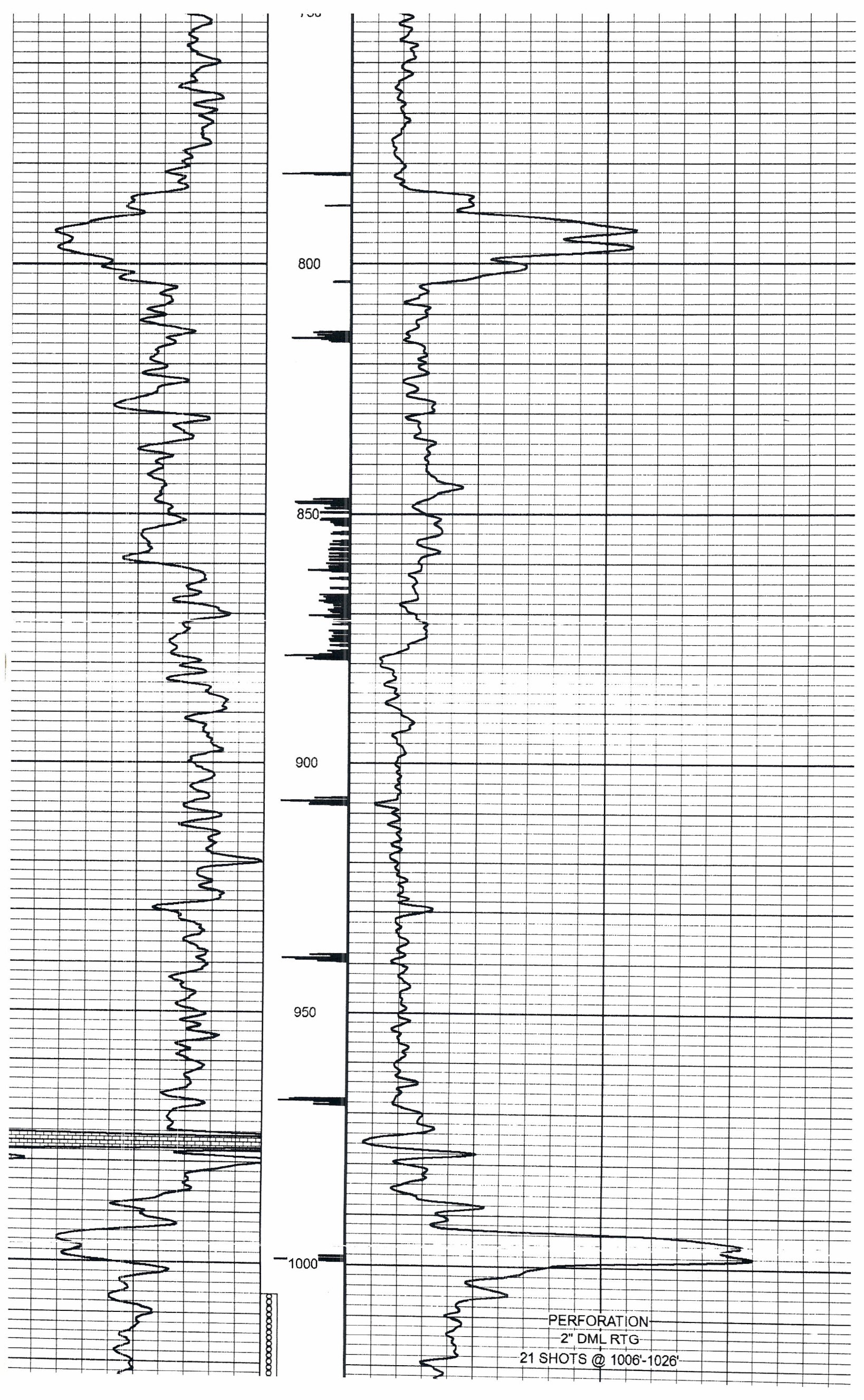
THANK YOU

Sensor	Offset (ft)	Schematic	Description	Len (ft)	OD (in)	Wt (lb)
			GR-TITAN_169 (TIT169_001) Titan 1 11/16" Gamma Ray	4.75	1.69	20.00









800

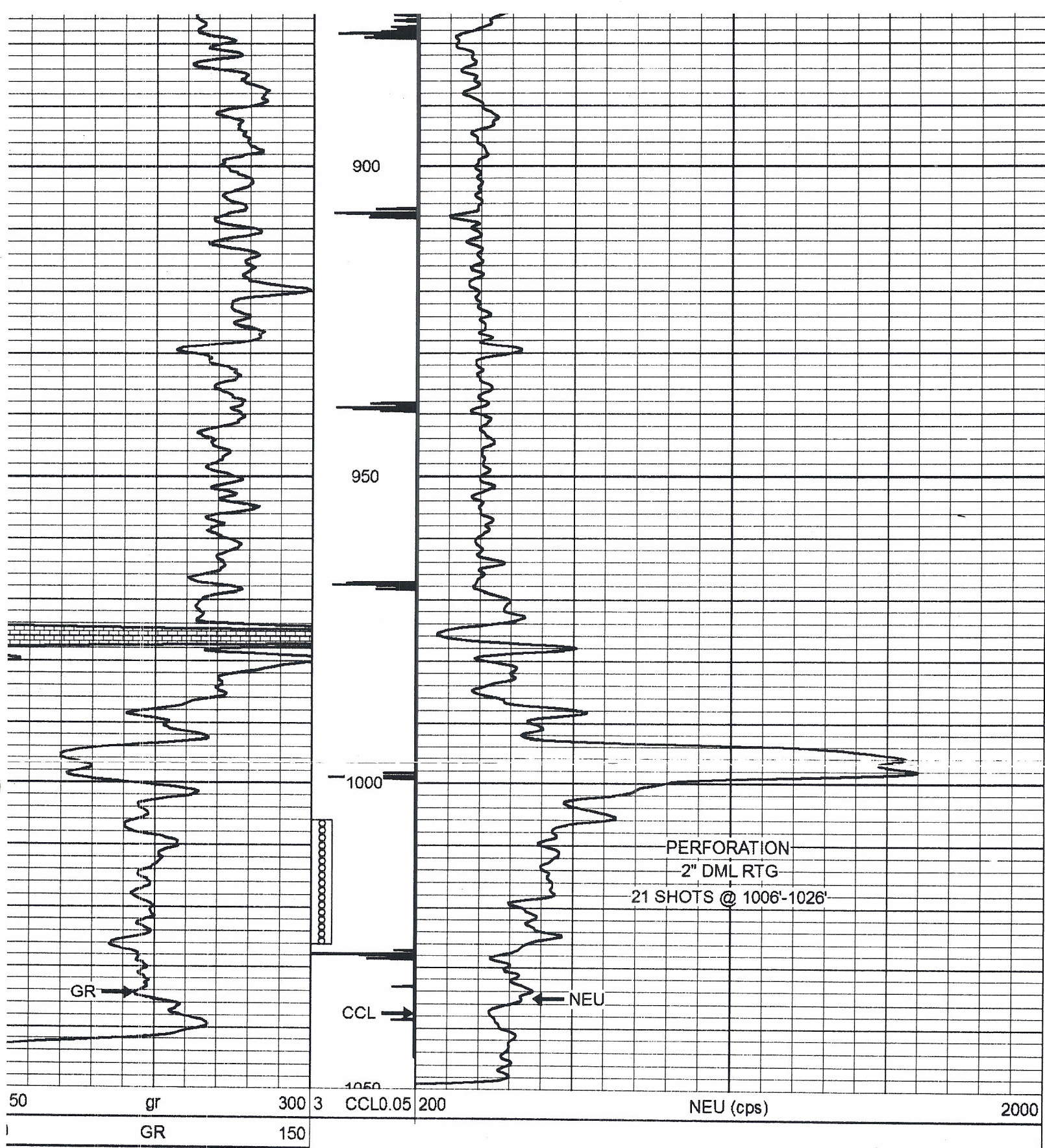
850

900

950

1000

PERFORATION  
2" DML RTG  
21 SHOTS @ 1006'-1026'



Company	JOHN A. ELMORE
Well	BERLIN #32
Field	PERU-SEDAN
County	CHAUTAUQUA SEC. 32 TWP. 33S RGE. 12E
State	KANSAS Date 1-4-16