



**GAMMA RAY  
NEUTRON  
COMPLETION LOG**

Company LAYMON OIL II, LLC  
Well GLADES #107-17  
Field VERNON  
County WOODSON  
State KANSAS

Location: SE-NE-SE-W4  
3452 FSL & 2803 FEL  
SEC 9 TWP 24S RGE 16E  
Elevation 10385.83  
Log Measured From G.L.  
Dilling Measured From G.L.Date 1-22-2017  
Run Number 1320  
Depth Driver 1320  
Depth Logger 1305

API #: 15-207-29602-00-00  
Other Services

Top Log Interval SURFACE  
Bottom Logged Interval 1305  
Fluid Level FULL

Type Fluid WATER  
Production Casting 2 7/8" @ 1310'  
Max. Recorded Temp. @  
Estimated Cement Top  
Calculated Cement Top  
Amount & Type Cement  
Amount & Type Admix  
Drilling Contractor COMPANANT TOOLS  
Equipment Number 107  
Location USBN D  
LAWMON M.

Recorded By  
Witnessed By

<<< Fold Here >>>

All interpretations are opinions based on inferences from electrical or other measurements and we cannot and do not guarantee the accuracy or correctness of any interpretation, and we shall not, except in the case of gross or willful negligence on our part, be liable or responsible for any loss, costs, damages, or expenses incurred or sustained by anyone resulting from any interpretation made by any of our officers, agents or employees. These interpretations are also subject to our general terms and conditions set out in our current Price Schedule.

**Comments**

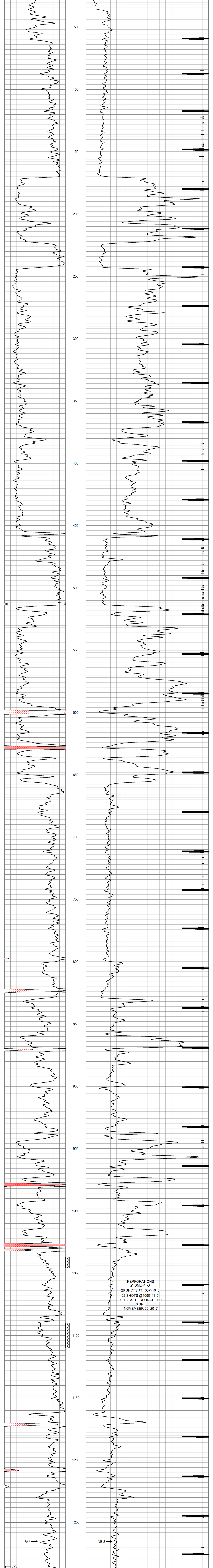
THANK YOU

Sensor	Offset (ft)	Schematic	Description	Len (ft)	OD (in)	Wt (lb)
GR	7.59		GR-TITAN 169 (TIT169_001) Titan 1 11/16" Gamma Ray	4.75	1.69	20.00
CCL	5.05		CCL-TITAN 169 (TIT169) Titan 1 11/16" Logging CCL	1.83	1.69	7.50
NEU	0.63		NEU-TITAN 169 (TIT169_001) Titan 1 11/16" Neutron	4.33	1.69	20.00

Dataset: glades # 107-17.db; field/well/run/1/pass1  
Total Length: 10.92 ft  
Total Weight: 47.50 lb  
O.D.: 1.69 in

Database File: f:\glades # 107-17.db  
Dataset Pathname: pass1  
Presentation Format: gr-n-ol  
Dataset Creation: Wed Nov 22 09:39:12 2017 by Log Std Casedhole 07122  
Charted by: Depth in Feet scaled 1.240

0	GR	150	100	NEU	1500
150	gr	300	13	CCL	-1



0	GR	150	100	NEU	1500
150	gr	300	13	CCL	-1