



MIDWEST SURVEYS
 LOGGING - PERFORATING - CONSULTING SERVICES
 P.O. Box 69, Osawatomie, KS 66064
 913 / 755 - 2128

GAMMA RAY / NEUTRON / CCL

File No.

Company Haas Petroleum, LLC.
 Well Coughenour No. 9-HP

Field Paola / Rantoul

County Franklin State Kansas

Location 1205' FSL & 1145' FWL
 NENE-SW-SW

Sec. 3 Twp. 16s Rge. 21e
 Permanent Datum GL Elevation 1003'
 Log Measured From GL
 Drilling Measured From GL

Other Services Perforate

Elevation KB NA D.F. NA G.L. 1003'

Date 10-09-2015

Run Number One

Depth Diller 749.0

Depth Logger 740.5

Bottom Logged Interval 739.5

Top Log Interval 20.0

Fluid Level Full

Type Fluid Water

Density / Viscosity NA

Salinity - PPM Cl NA

Max Recorded Temp NA

Estimated Cement Top 0.0

Equipment No. Location 102 Osawatomie

Recorded By Gary Wridsch

Witnessed By John Haas

BORE-HOLE RECORD

RUN	BIT	FROM	TO	SIZE	WGT.	FROM	TO
No.	FROM	TO	SIZE	WGT.	FROM	TO	
One	9.875"	0.0	20.0	7.00"	17.0#	0.0	20.0
Two	5.625"	20.0	749.0	2.875"	6.5#	0.0	741.0

API# 15-059-27,012

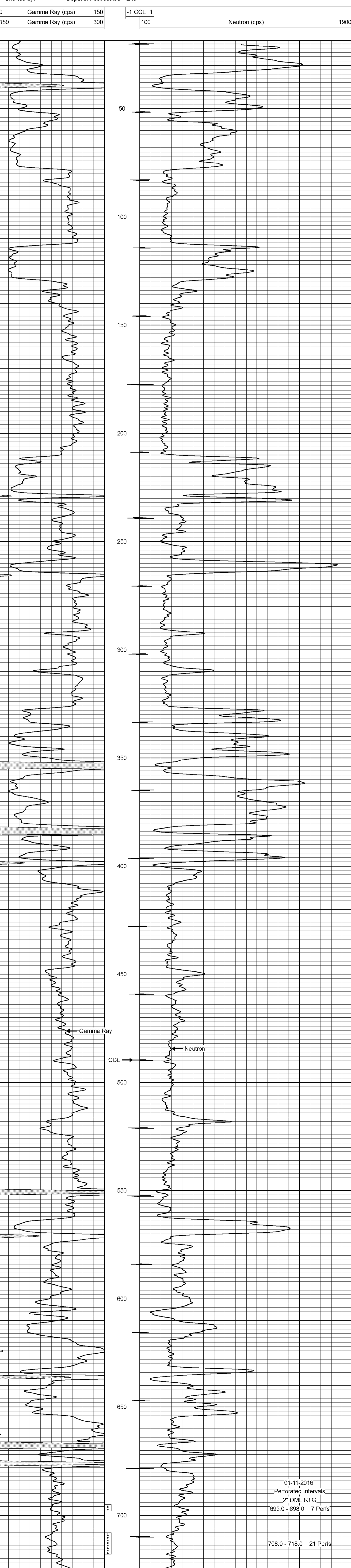
<<< Fold Here >>>

All interpretations are opinions based on inferences from electrical or other measurements and we cannot and do not guarantee the accuracy or correctness of any interpretation, and we shall not, except in the case of gross or willful negligence on our part, be liable or responsible for any loss, costs, damages, or expenses incurred or sustained by anyone resulting from any interpretation made by any of our officers, agents or employees. These interpretations are also subject to our general terms and conditions set out in our current Price Schedule.

Comments

Drilling Contractor :
 Skyy Drilling, LLC.
 Rig #6

Database File: coughenour 9hp.db
 Dataset Pathname: pass1
 Presentation Format: gr-n-ccl
 Dataset Creation: Fri Oct 09 11:06:45 2015 by Log SCH 111116
 Charted by: Depth in Feet scaled 1:240



01-11-2016
 Perforated Intervals
 2" DML RTG
 695.0 - 698.0 7 Perfs
 708.0 - 718.0 21 Perfs