

5 Inch MD Gamma Ray Log (Scale: 5"-100' (10'))

Company: Tapstone Energy
 Well: Sylvia 23-34-9 1H _ SlideTrack
 Field: Hibbord Northeast
 Well ID: 15-077-22160-01-00
 Job Number: LKS6119815

State: KS
 County: Harper Co.
 Country: US
 Location: Sec. 24, Twp. 34S, R.9W
 Operator 1: J. Treille
 Operator 2: S. Winkels

Comment 1: LAT: 37° 3' 56.59N
 Comment 2: LONG: 98° 15' 15.71W
 Comment 3: Y: 145397.90 / X: 2071676.50
 Comment 4: Mud Density (lb/bbl) 8.4 / Funnel Viscosity (sec/qt) 27
 Comment 5: Max Temp (DegF) 111° (NAD 1927) Gamma Ray in Reference to Elev. KB (Kansas South)

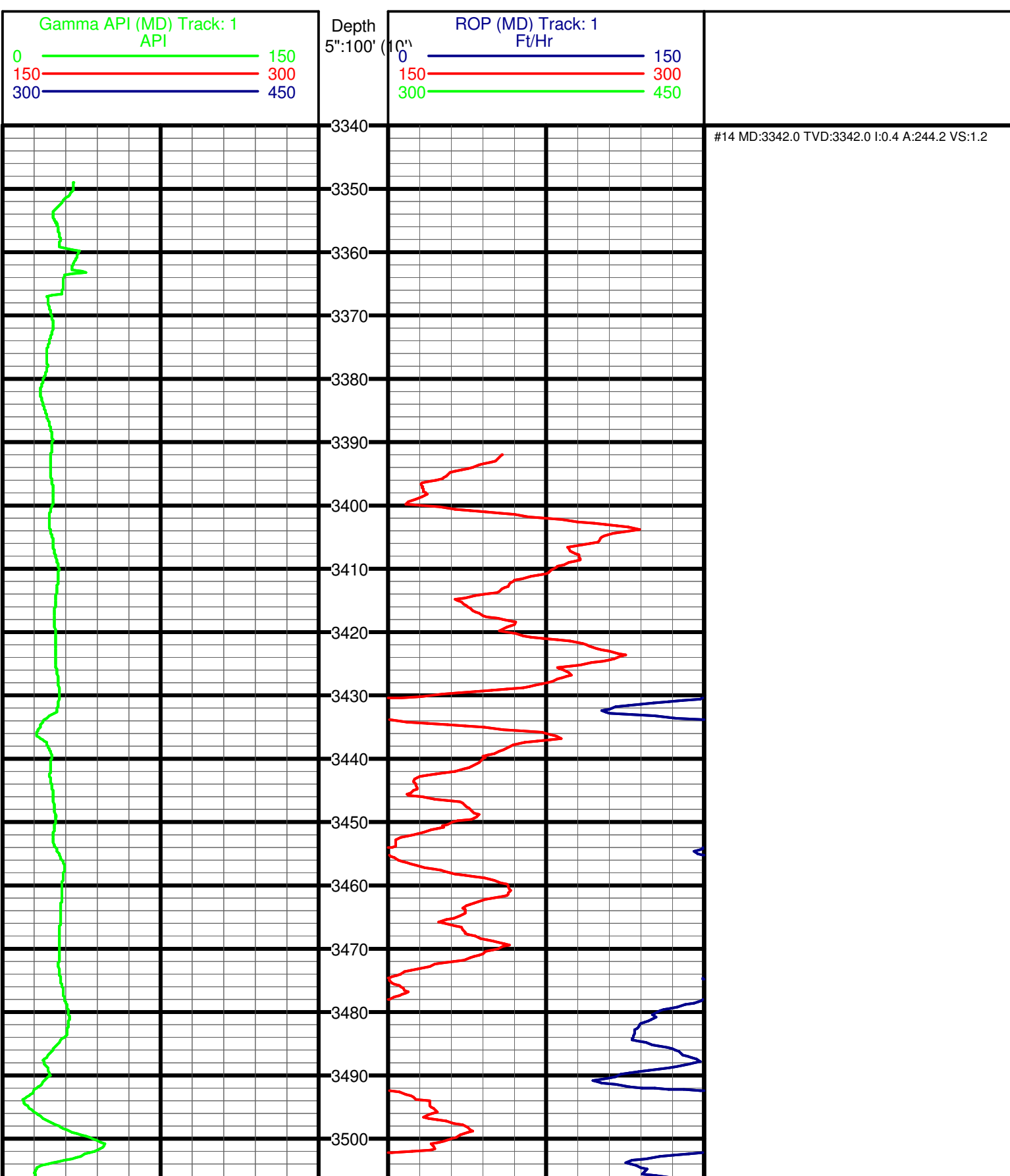
Hole Data			Casing Record		
Size	From	To	Size	From	To
12 1/4"	0'	838'	9 5/8"	0'	838'
8 3/4"	838'	5,158'	7"	838'	5,158'
6 1/8"	5,158'	9,063'			

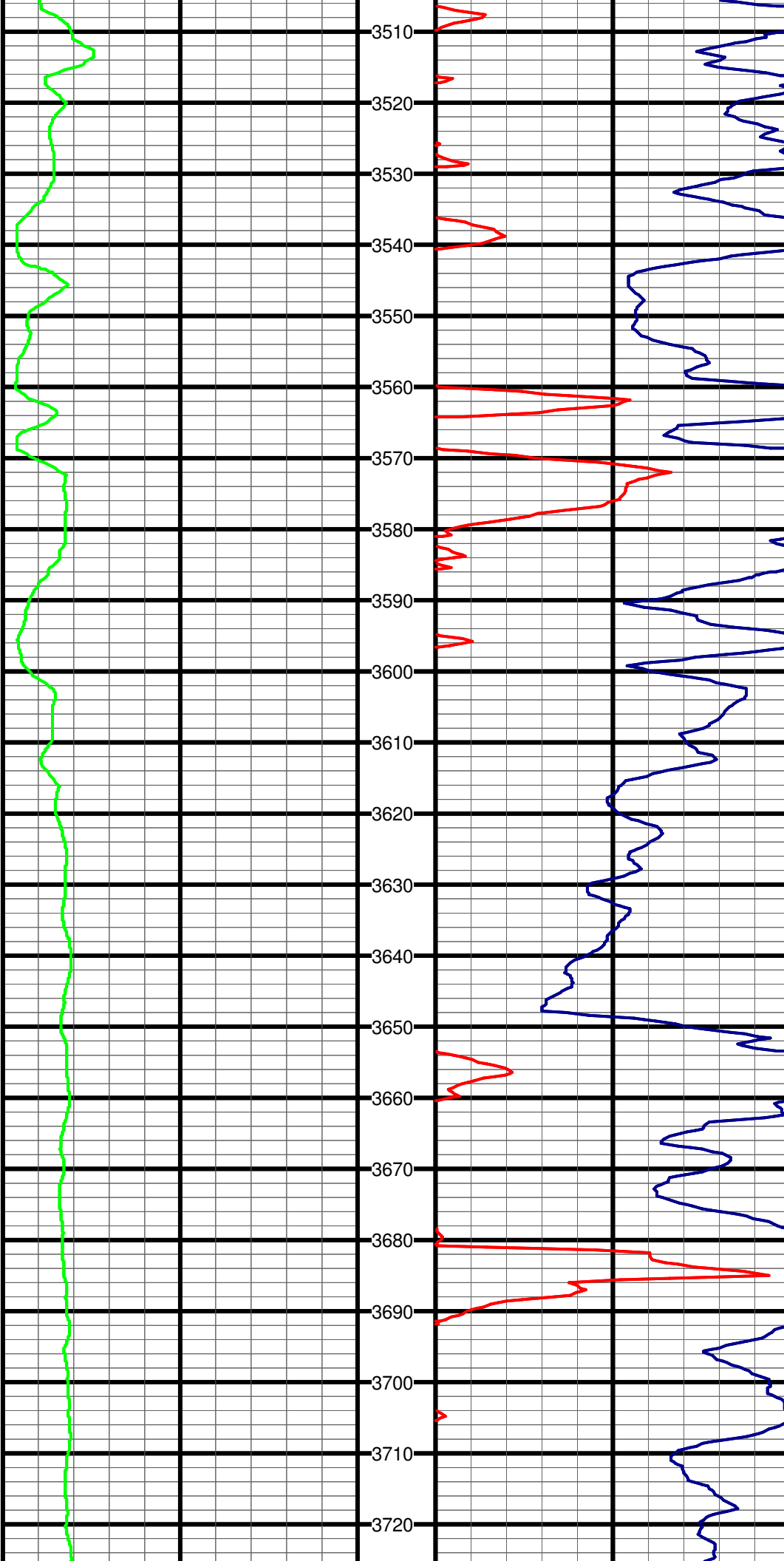
Tool Run Data		Run #1	Run #2	Run #3	Run #4	Run #5
Tool S/N	1680	1558	1009	1006	1004	
Cal Factor	4.463	3.225	3.10	3.10	3.10	
Gamma Offset	43'	41'	49'	49'	49'	
Start Depth	3,490'	5,131'	5,147'	6,420' ST	6,502' ST	
Start Date	11/24/2015	11/27/2015	11/30/2015	12/04/2015	12/05/2015	
Start Time	06:00	19:30	11:00	13:50	13:46	
End Depth	5,131'	5,147'	7,686'	6,502' ST	9,063' ST	
End Date	11/27/2015	11/30/2015	12/03/2015	12/05/2015	12/09/2015	
End Time	11:45	02:15	21:00	06:15	09:12	

Tool Run Data	Run #6	Run #7	Run #8	Run #9	Run #10
Tool S/N					
Cal Factor					
Offset					
Start Depth					
Start Date					
Start Time					
End Depth					
End Date					
End Time					

Tool Run Data	Run #11	Run #12	Run #13	Run #14	Run #15
Tool S/N					
Cal Factor					
Offset					
Start Depth					
Start Date					
Start Time					
End Depth					

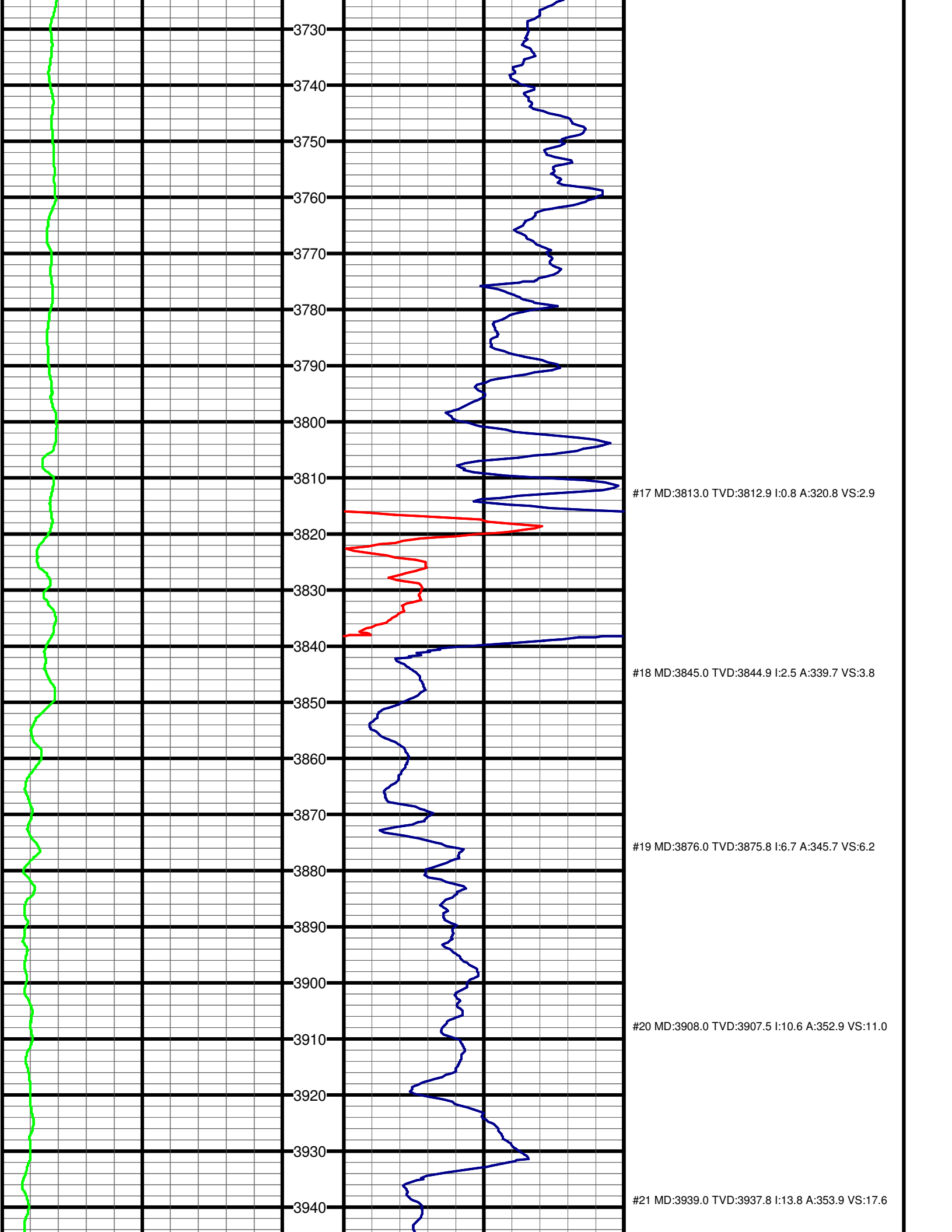
End Date					
End Time					

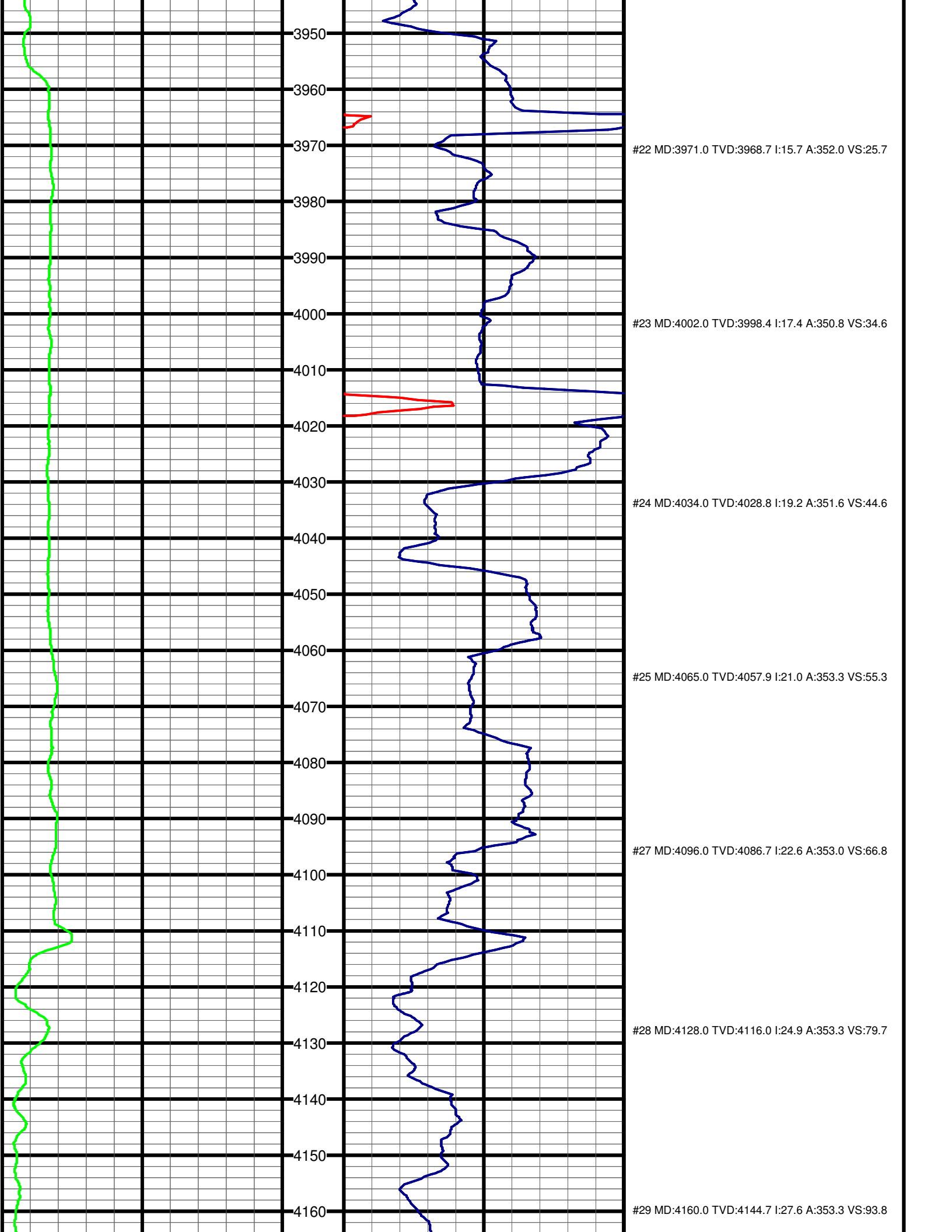


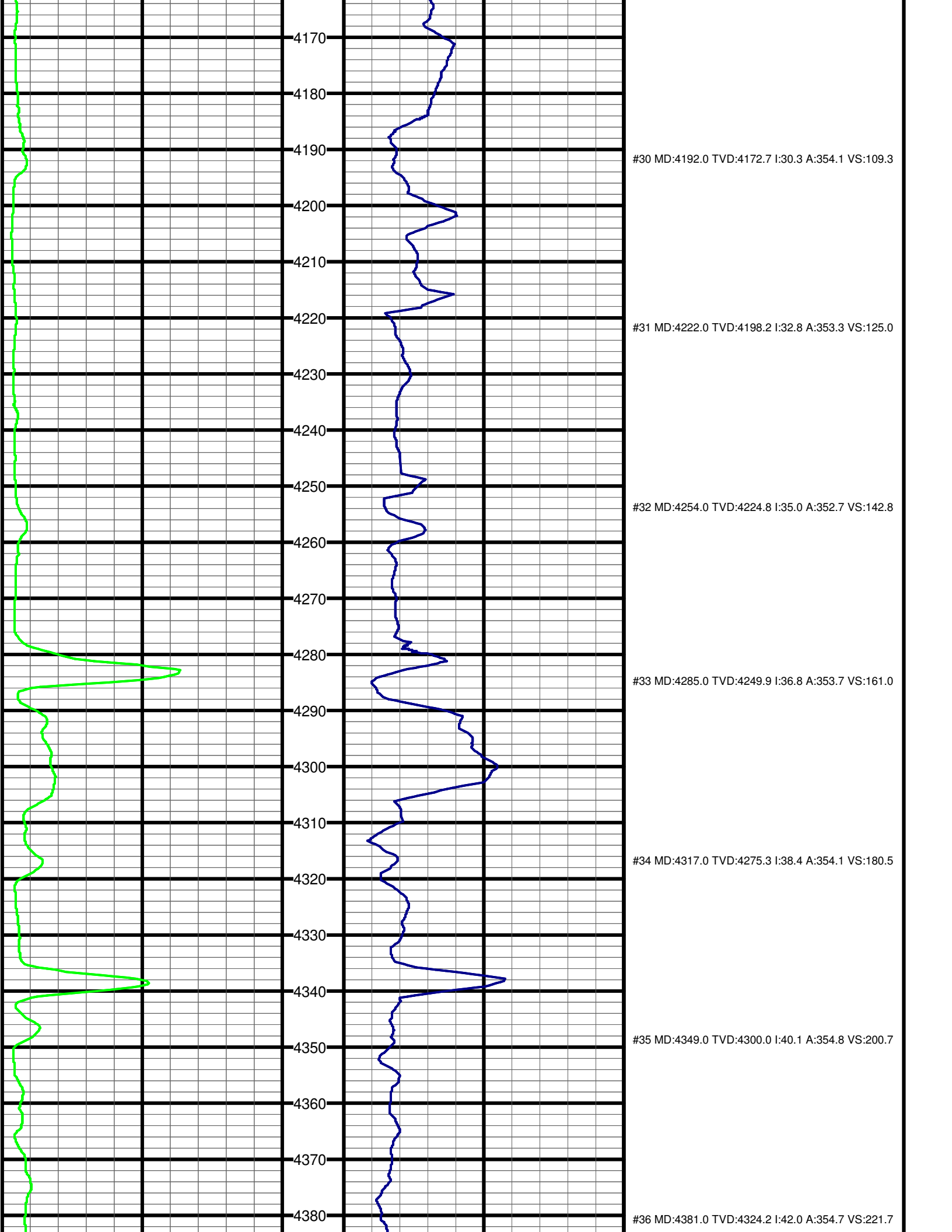


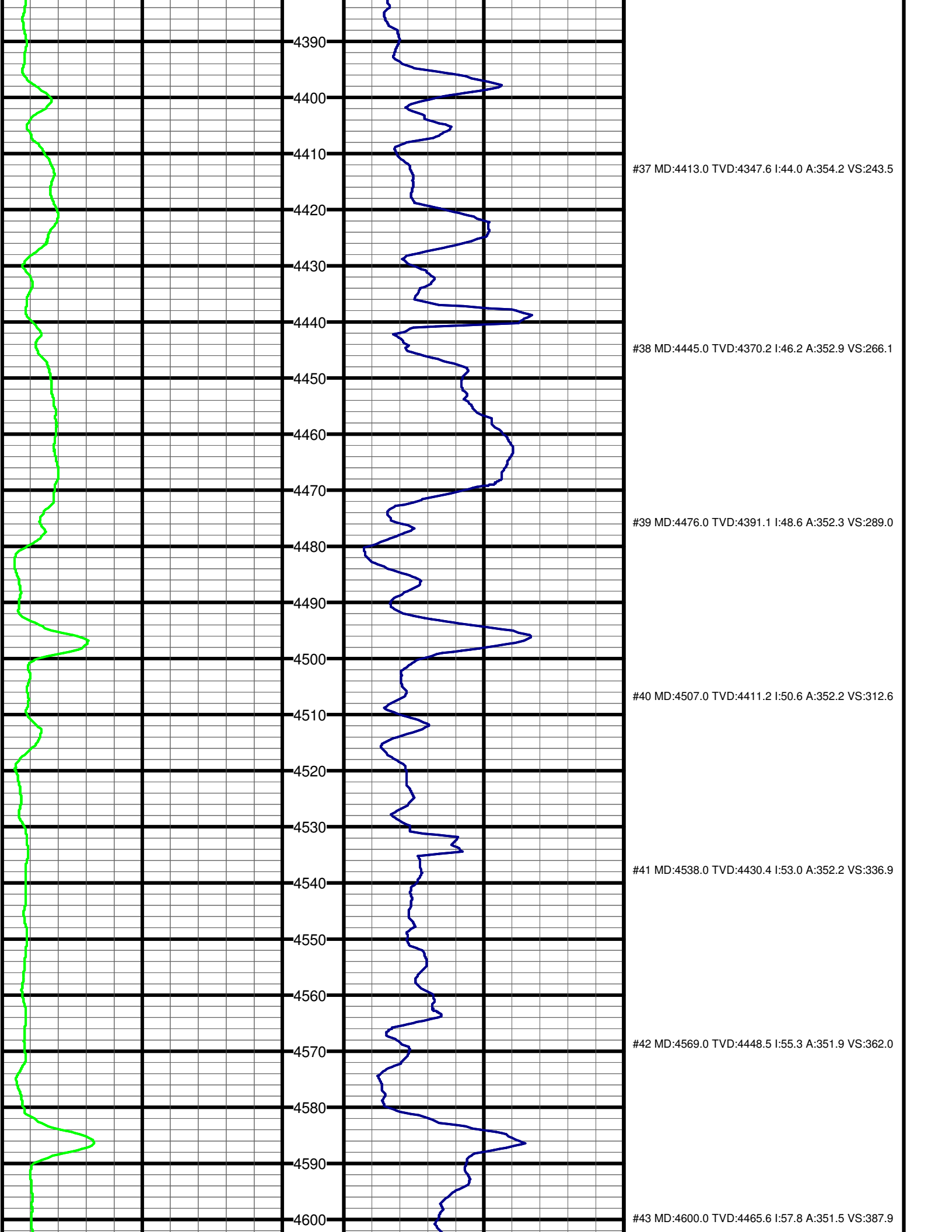
#15 MD:3531.0 TVD:3531.0 I:0.5 A:268.3 VS:1.0

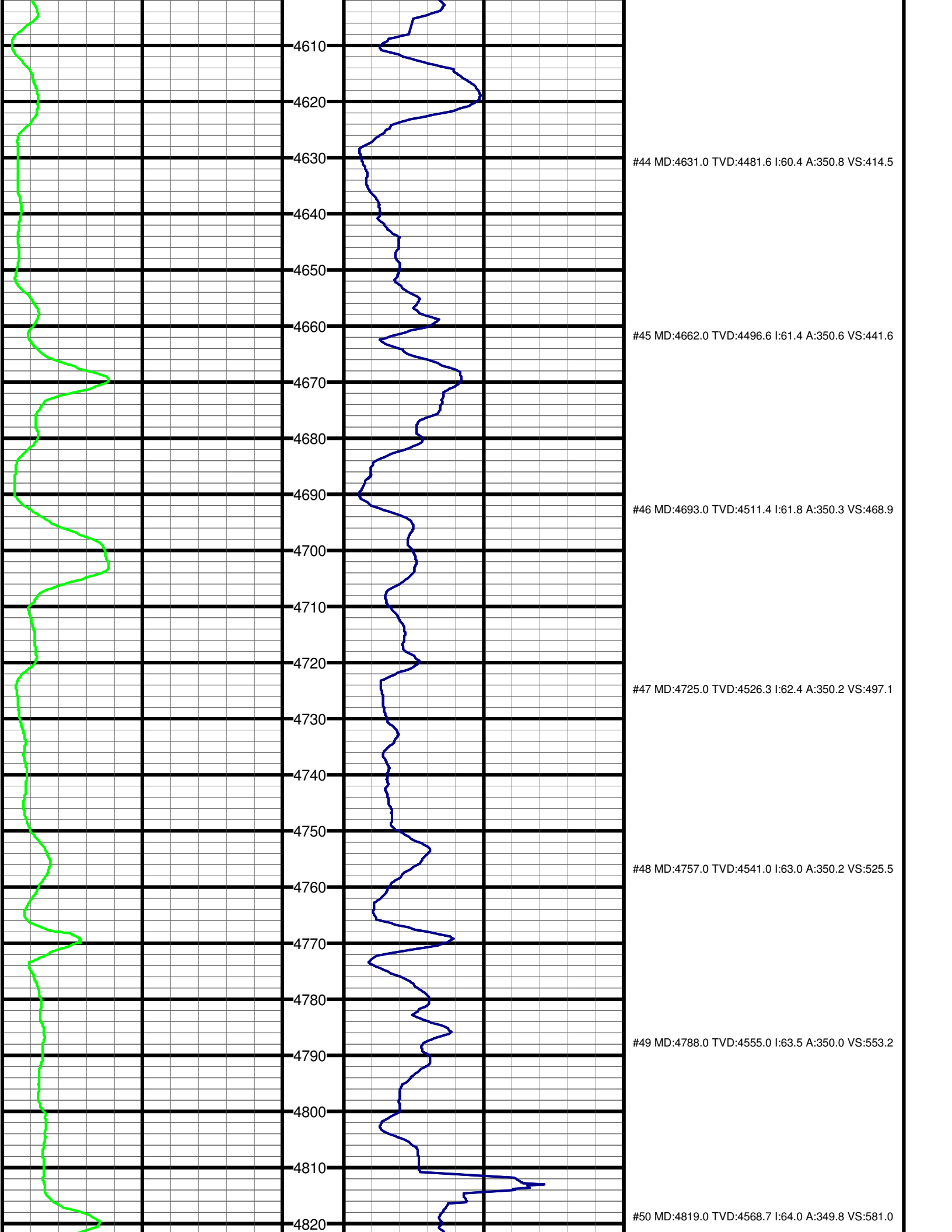
#16 MD:3719.0 TVD:3719.0 I:0.7 A:306.0 VS:1.9

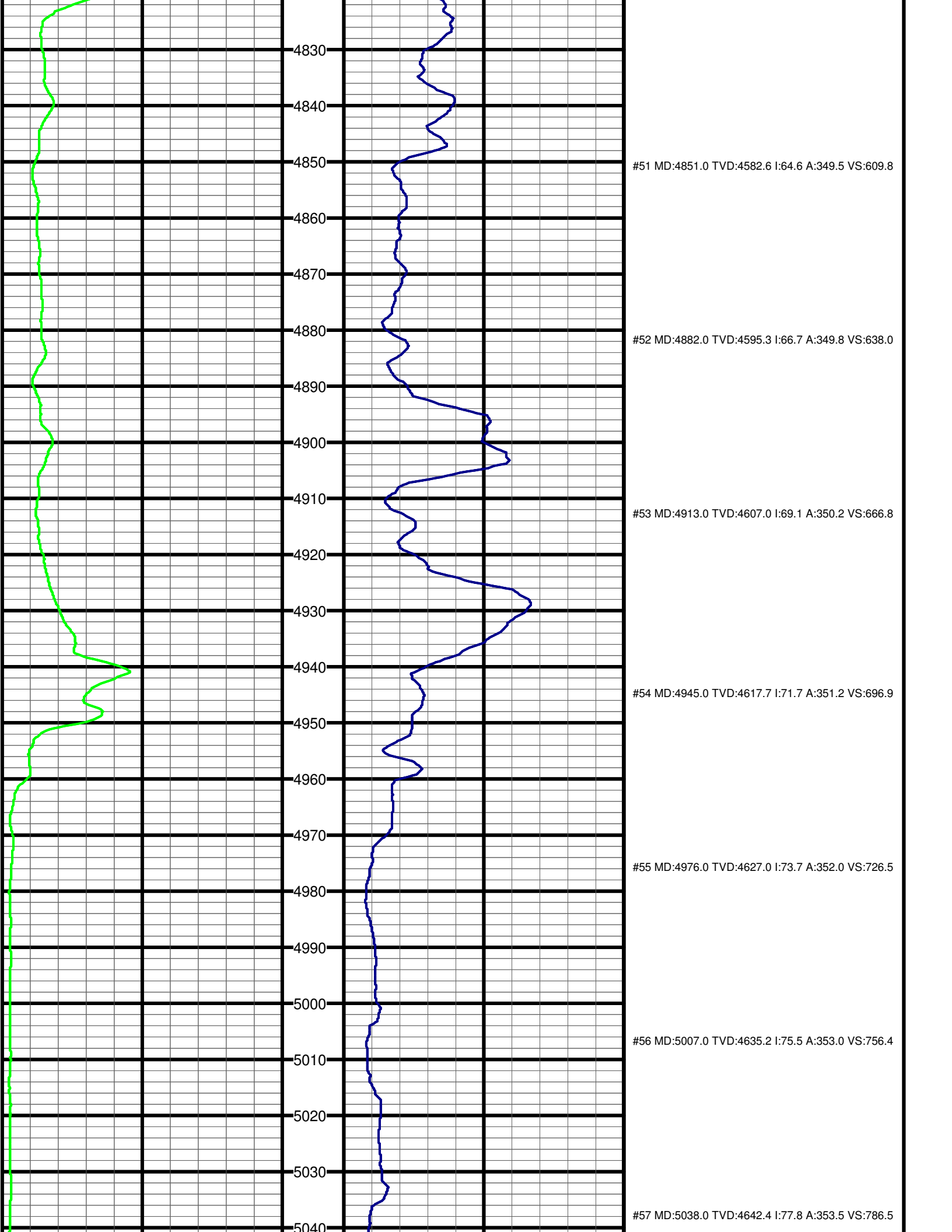


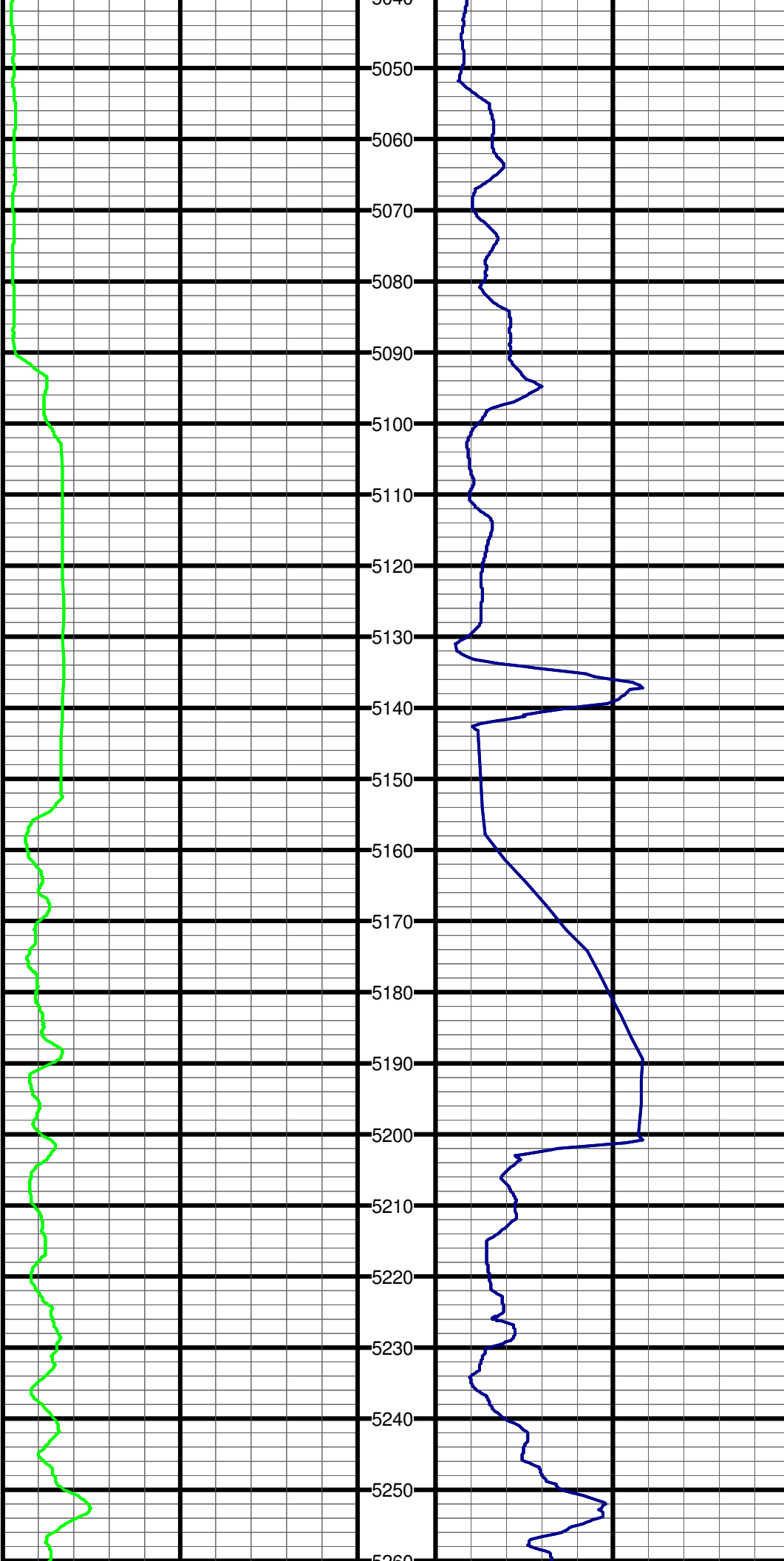












5040
5050
5060
5070
5080
5090
5100
5110
5120
5130
5140
5150
5160
5170
5180
5190
5200
5210
5220
5230
5240
5250
5260

#58 MD:5070.0 TVD:4648.2 I:81.0 A:353.7 VS:818.0

#59 MD:5175.0 TVD:4659.9 I:86.2 A:354.6 VS:922.2

#60 MD:5207.0 TVD:4661.7 I:87.5 A:354.4 VS:954.1

#61 MD:5238.0 TVD:4662.5 I:89.4 A:354.9 VS:985.0

