



MIDWEST SURVEYS
 LOGGING - PERFORATING - CONSULTING SERVICES
 P.O. Box 68, Osawatomie, KS 66064
 913 / 755 - 2128

GAMMA RAY / NEUTRON / CCL

File No.

Company **Altavista Energy, Inc.**
 Well **Knoche No. A-31**
 Field **Block**
 County **Miami** State **Kansas**

Location **3720' FSL & 3950' FEL**
NW-NW-SE-NW

Other Services
Perforate

Sec. **16** Twp. **18S** Rge. **24E** Elevation **931'**
 Permanent Datum **GL**
 Log Measured From **GL**
 Drilling Measured From **GL**
 Elevation **KB: NA**
DF: NA
GL: 931'

Date **03-08-2017**

Run Number	One
Depth Driller	540.0
Depth Logger	497.2
Bottom Logged Interval	496.2
Top Log Interval	20.0
Fluid Level	Full
Type Fluid	Water
Density / Viscosity	NA
Salinity - PPM Cl	NA
Max Recorded Temp	NA
Estimated Cement Top	0.0
Equipment No.	104
Location	Osawatomie
Recorded By	Gary Wlndisch
Witnessed By	Doug Evans

BORE-HOLE RECORD

TO

FROM

SIZE

WGT.

FROM

TO

Run No.	BIT	FROM	TO	SIZE	WGT.	FROM	TO
One	9.875"	0.0	20.0	7.00"	17.0#	0.0	20.0
Two	5.625"	20.0	540.0	2.875"	6.5#	0.0	530.55
				Baffle	Set	At	498.80

CASING RECORD

TO

FROM

SIZE

WGT.

FROM

TO

Run No.	BIT	FROM	TO	SIZE	WGT.	FROM	TO
One	9.875"	0.0	20.0	7.00"	17.0#	0.0	20.0
Two	5.625"	20.0	540.0	2.875"	6.5#	0.0	530.55
				Baffle	Set	At	498.80

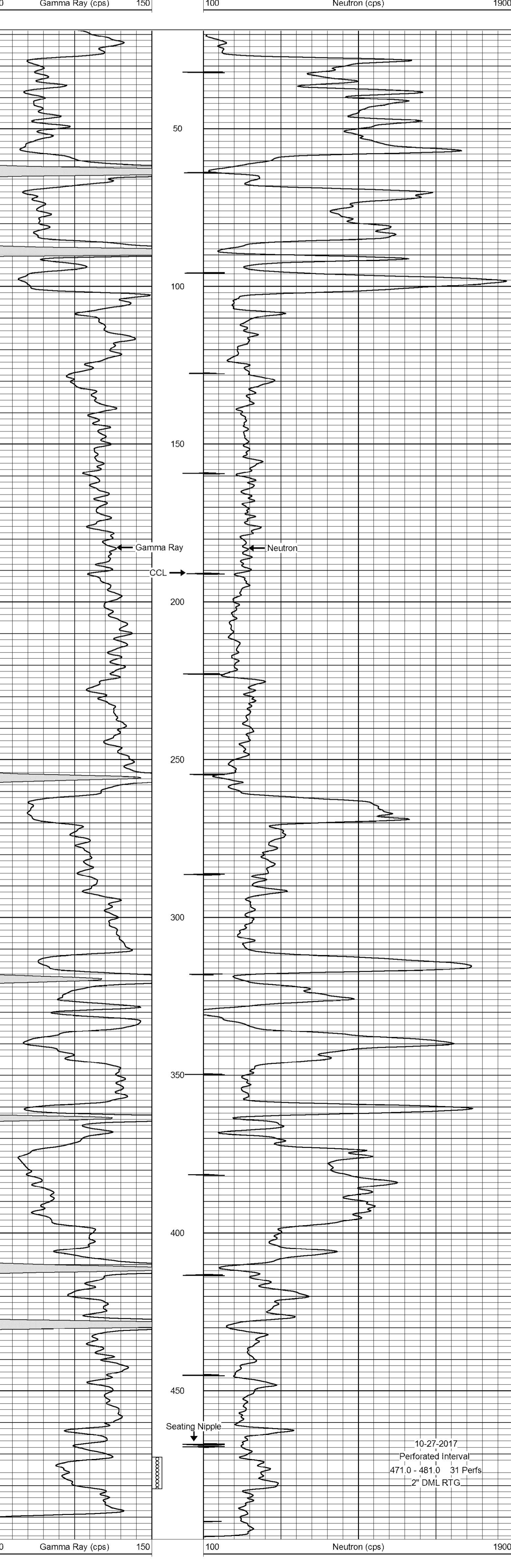
<<< Fold Here >>>

All interpretations are opinions based on inferences from electrical or other measurements and we cannot and do not guarantee the accuracy or correctness of any interpretation, and we shall not, except in the case of gross or willful negligence on our part, be liable or responsible for any loss, costs, damages, or expenses incurred or sustained by anyone resulting from any interpretation made by any of our officers, agents or employees. These interpretations are also subject to our general terms and conditions set out in our current Price Schedule.

Comments

Drilling Contractor :
 Town Oilfield Services, Inc.

Database File: knoche 31a.db
 Dataset Pathname: pass1
 Presentation Format: gr-n-ccl
 Dataset Creation: Wed Mar 08 09:22:18 2017 by Log SCH 111116
 Charted by: Depth in Feet scaled 1:240



10-27-2017
 Perforated Interval
 471.0 - 481.0 31 Perfs
 2" DML RTG