



# GAMMA RAY NEUTRON COMPLETION LOG

Company LAYMON OIL II, LLC  
 Well GLADES #102-17  
 Field VERNON  
 County WOODSON State KANSAS

Location: NW/4SW/4NE  
 3790 FSL & 24th FEL  
 SEC 9 TWP 24S RGE 16E  
 Elevation 10627.8 ft  
 Log Measured From G.L.  
 Drilling Measured From G.L.

Date 10-16-2017  
 Run Number 1-NEWWELL  
 Depth Driver 1320'  
 Depth Logger SURFACE  
 Top Log Interval 1288.6'  
 Bottom Logged Interval FULL

Type Fluid WATER  
 Production Casing 2 7/8" @ T.D.  
 Max. Recorded Temp. 83.6° @ 40'  
 Estimated Cement Top  
 Calculated Cement Top  
 Amount & Type Cement  
 Amount & Type Admix  
 Drilling Contractor COMPANY TOOLS  
 Equipment Number 107  
 Location USEN D  
 Logged By LAYMON M.

API # : 15-207-29488-00-00  
 Other Services

<<< Fold Here >>>

All interpretations are opinions based on inferences from electrical or other measurements and we cannot and do not guarantee the accuracy or correctness of any interpretation, and we shall not, except in the case of gross or willful negligence on our part, be liable or responsible for any loss, costs, damages, or expenses incurred or sustained by anyone resulting from any interpretation made by any of our officers, agents or employees. These interpretations are also subject to our general terms and conditions set out in our current Price Schedule.

### Comments

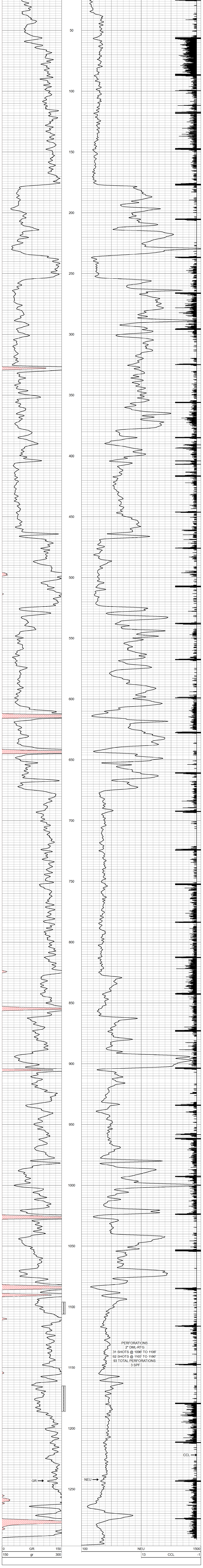
THANK YOU

Sensor	Offset (ft)	Schematic	Description	Len (ft)	OD (in)	Wt (lb)
GR	7.59		GR-TITAN_169 (TIT169_001) Titan 1 11/16" Gamma Ray	4.75	1.69	20.00
CCL	5.05		CCL-TITAN_169 (TIT169) Titan 1 11/16" Logging CCL	1.83	1.69	7.50
NEU	0.63		NEU-TITAN_169 (TIT169_001) Titan 1 11/16" Neutron	4.33	1.69	20.00

Dataset: glades #102-17.db: field/well/run1/pass2  
 Total Length: 10.92 ft  
 Total Weight: 47.50 lb  
 O.D.: 1.69 in

Database File: f:\glades #102-17.db  
 Dataset Pathname: pass2  
 Presentation Format: gr-n-csl  
 Dataset Creation: Mon Oct 16 14:15:26 2017 by Log Std Casedhole 07122  
 Charted by: Depth in Feet scaled 1.240

0	GR	150	100	NEU	1500
150	gr	300	13	CCL	-1



0	GR	150	100	NEU	1500
150	gr	300	13	CCL	-1