



# MIDWEST SURVEYS

LOGGING - PERFORATING - CONSULTING SERVICES  
P.O. Box 68, Osawatomie, KS 66064  
913 / 765 - 2128

## GAMMA RAY / NEUTRON / CCL

File No.

API# 15-059-26,946

Company Haas Petroleum, LLC  
Well Detar No. 6-HP  
Field Paola - Rantoul  
County Franklin State Kansas

Location

1980' FNL & 3810' FEL  
W/2-W/2-SE-NW

Other Services  
Perforate

Sec. 3 Twp 16S Rge 21E

Permanent Datum GL Elevation 1006'

Log Measured From GL  
Drilling Measured From GL

Date 09-25-2015

Run Number One

Depth Driller 750.0

Depth Logger 732.0

Bottom Logged Interval 731.0

Top Log Interval 20.0

Fluid Level Full

Type Fluid Water

Density / Viscosity NA

Salinity - PPM Cl NA

Max Recorded Temp NA

Estimated Cement Top 0.0

Equipment No. Location 104 Osawatomie

Recorded By Steve Windisch

Missessed By John Haas

Recorded By

Recorded By

Recorded By

Recorded By

Recorded By

Recorded By

Recorded By

### BORE-HOLE RECORD

### CASING RECORD

Run No.	BIT	FROM	TO	SIZE	WGT.	FROM	TO
One	9.875"	0.0	20.0	7.00"	17.0 #	0.0	20.0
Two	5.625"	20.0	750.0	2.875"	6.5 #	0.0	735.0

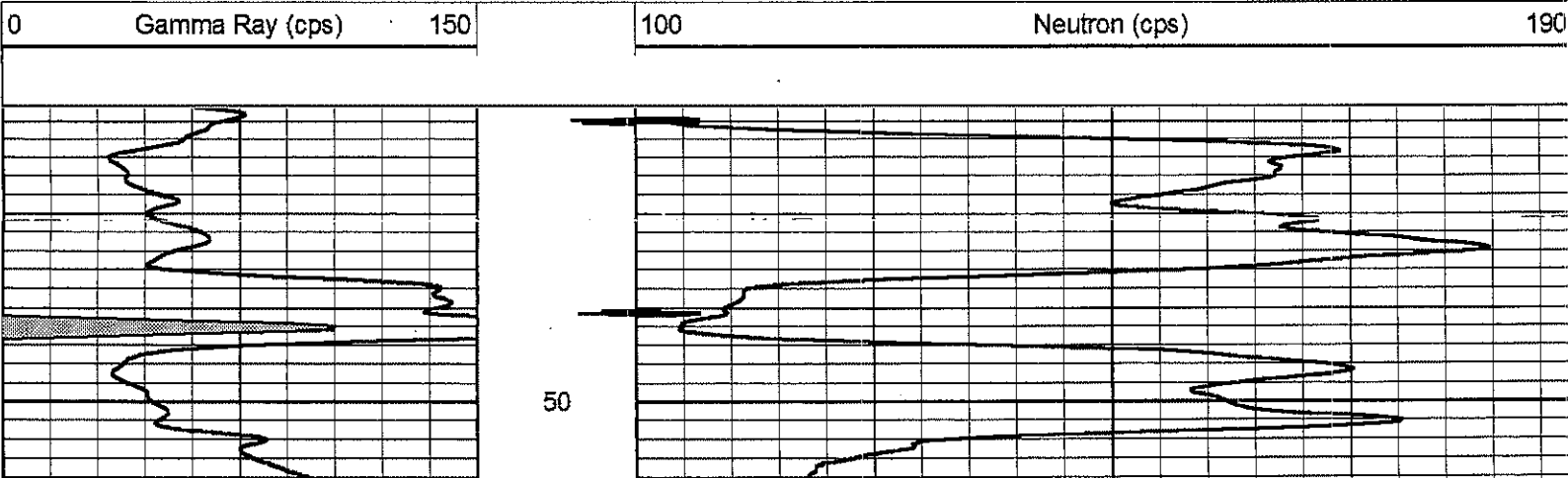
<<< Fold Here >>>

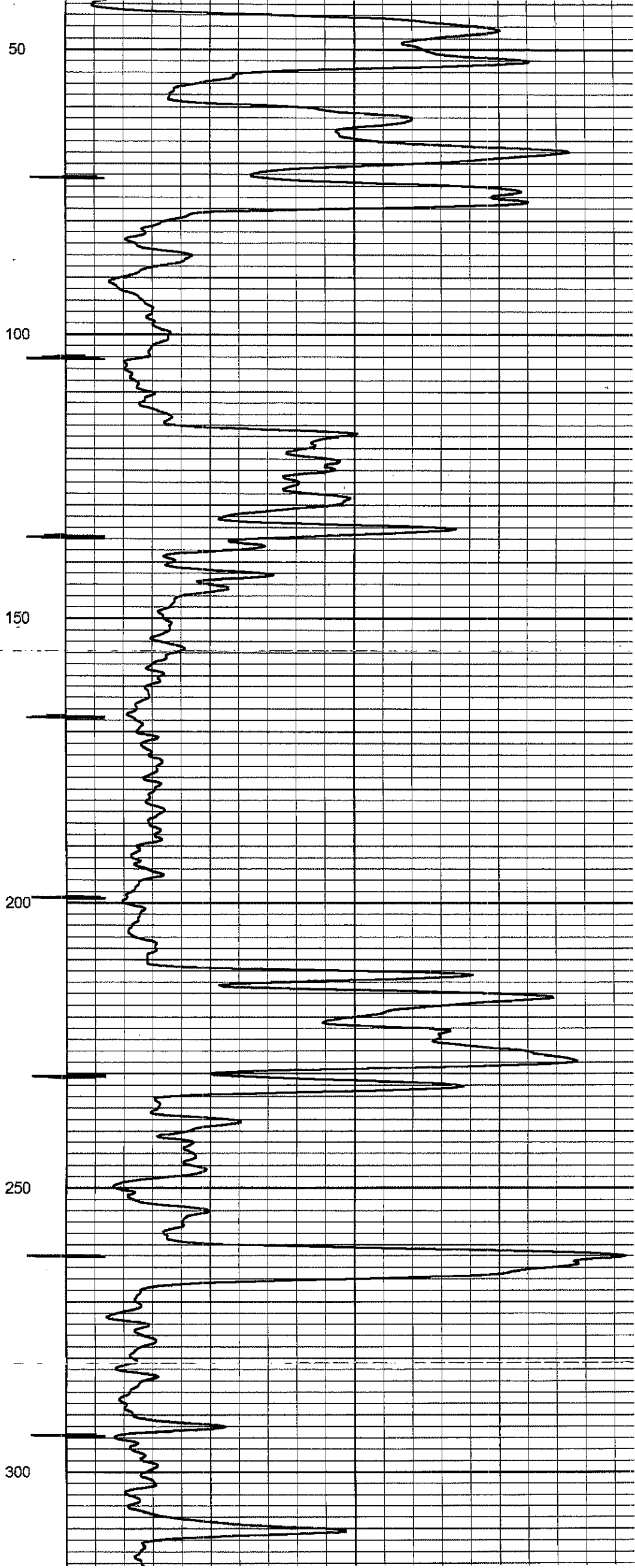
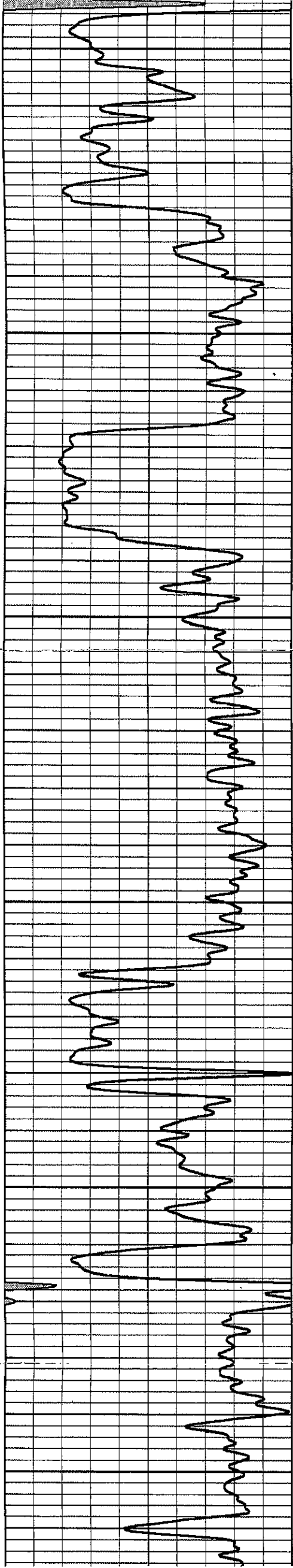
All interpretations are opinions based on inferences from electrical or other measurements and we cannot and do not guarantee the accuracy or correctness of any interpretation, and we shall not, except in the case of gross or willful negligence on our part, be liable or responsible for any loss, costs, damages, or expenses incurred or sustained by anyone resulting from any interpretation made by any of our officers, agents or employees. These interpretations are also subject to our general terms and conditions set out in our current Price Schedule.

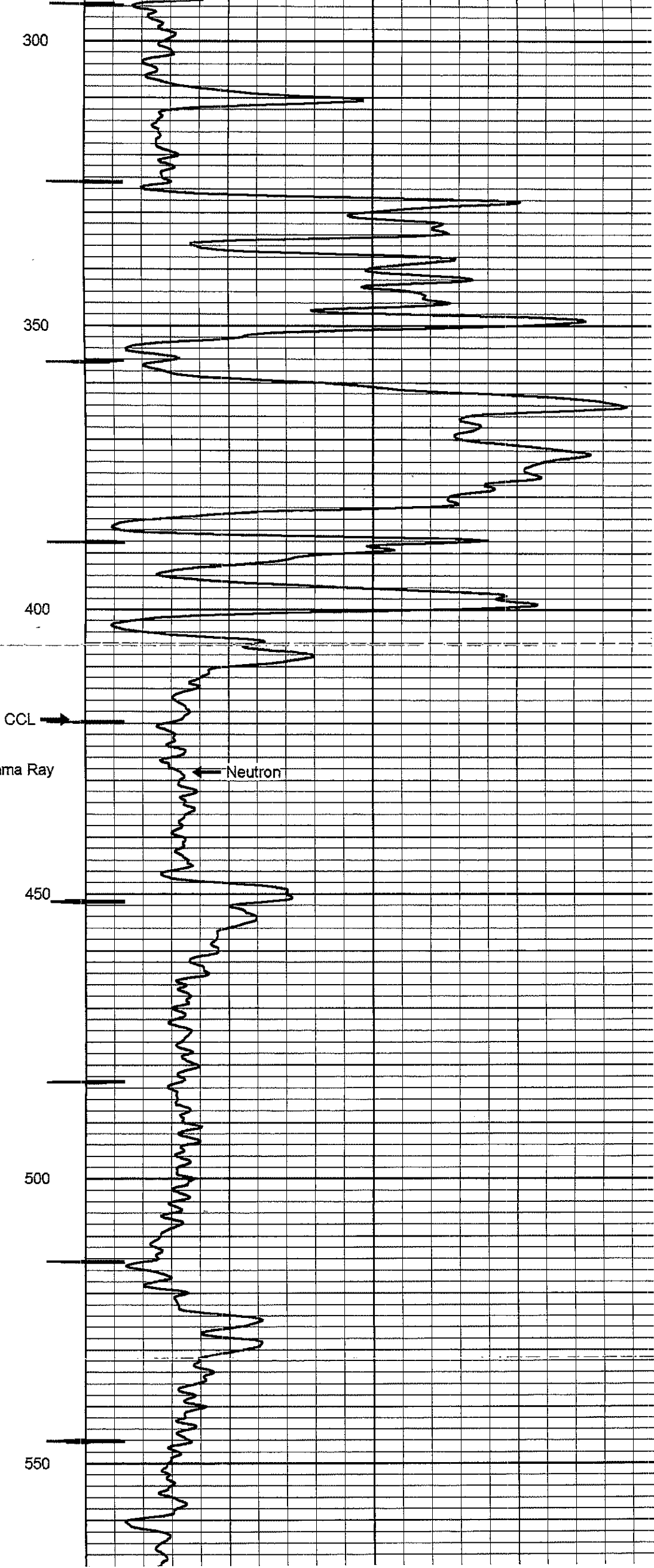
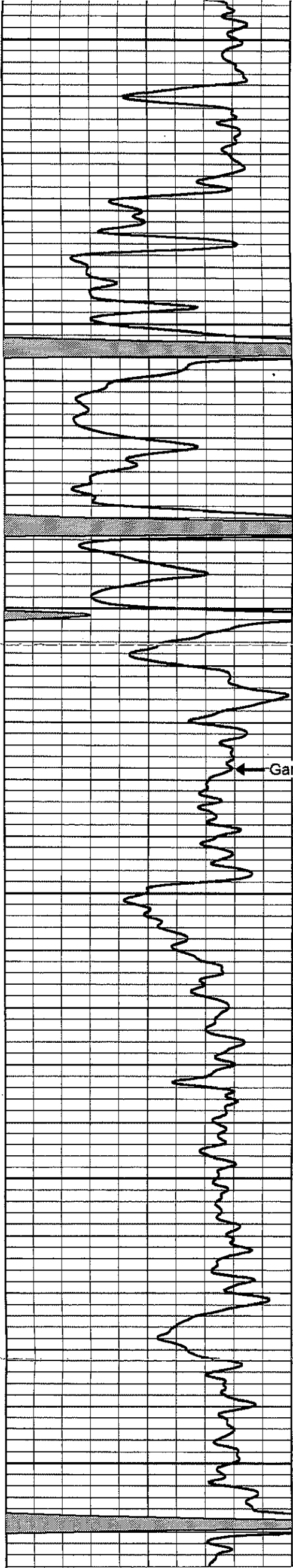
### Comments

Drilling Contractor :  
Skyy Drilling, LLC

Database File: detar 6hp.db  
Dataset Pathname: pass 1  
Presentation Format: gr-n-ccl  
Dataset Creation: Fri Sep 25 10:35:08 2015 by Log SCH 11116  
Charted by: Depth in Feet scaled 1:240







300

350

400

CCL

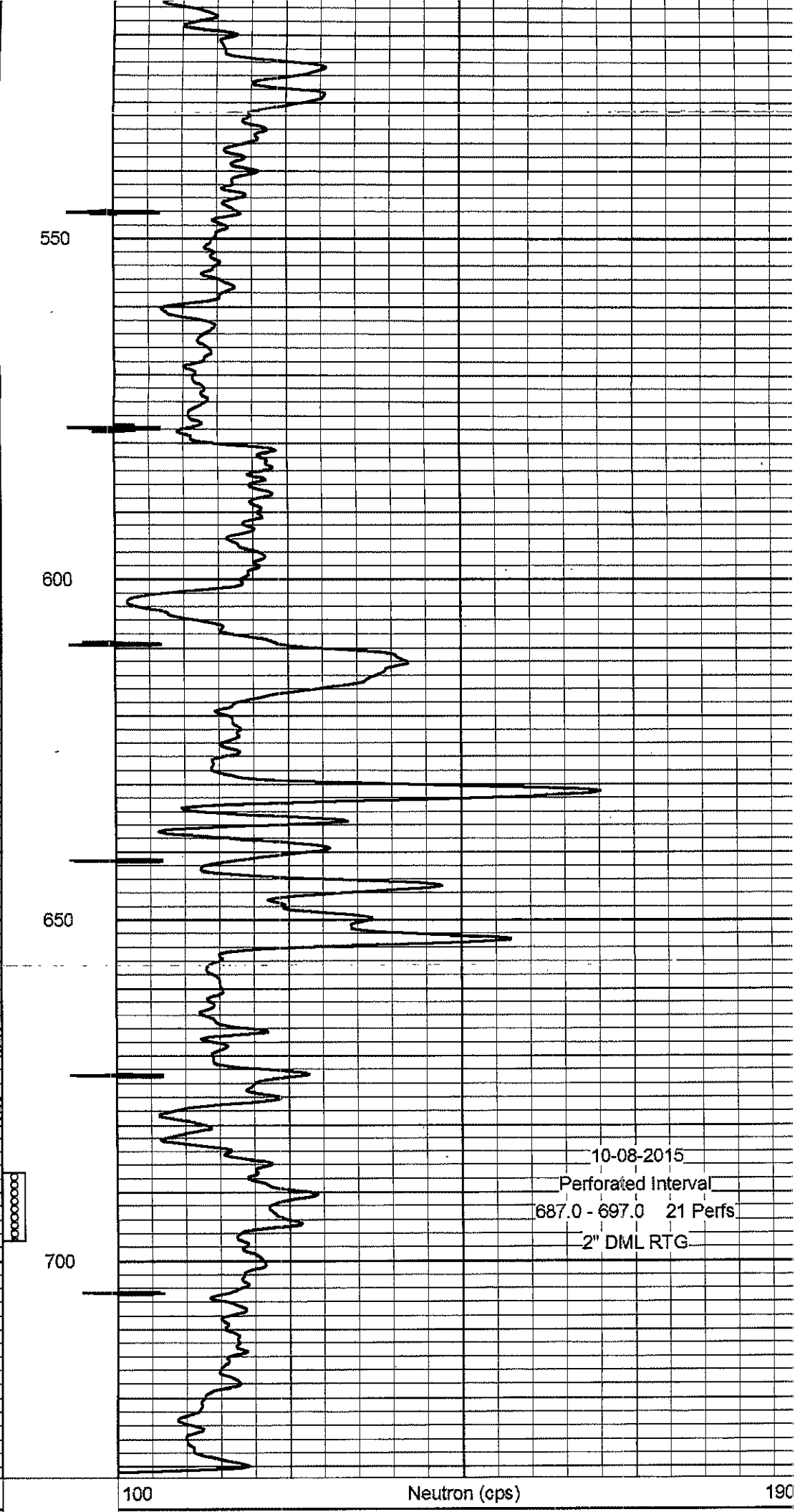
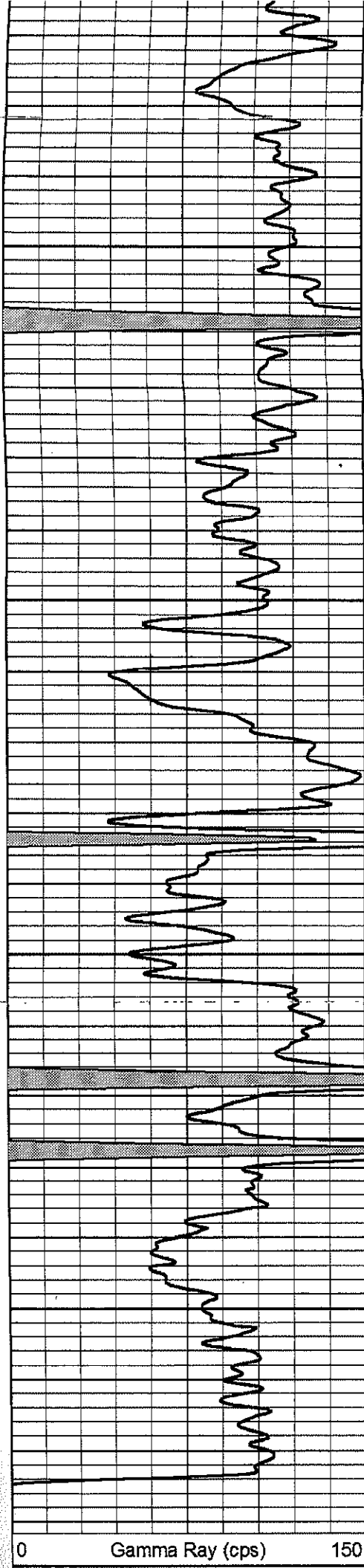
Gamma Ray

Neutron

450

500

550



10-08-2015  
Perforated Interval  
687.0 - 697.0 21 Perfs  
2" DML RTG