

DISCLAIMER
 THE USE OF AND RELIANCE UPON THIS RECORDED-DATA BY THE HEREIN NAMED COMPANY (AND ANY OF ITS AFFILIATES, PARTNERS, REPRESENTATIVES, AGENTS, CONSULTANTS AND EMPLOYEES) IS SUBJECT TO THE TERMS AND CONDITIONS AGREED UPON BETWEEN SCHLUMBERGER AND THE COMPANY, INCLUDING: (a) RESTRICTIONS ON USE OF THE RECORDED-DATA; (b) DISCLAIMERS AND WAIVERS OF WARRANTIES AND REPRESENTATIONS REGARDING COMPANY'S USE OF AND RELIANCE UPON THE RECORDED-DATA; AND (c) CUSTOMER'S FULL AND SOLE RESPONSIBILITY FOR ANY INFERENCE DRAWN OR DECISION MADE IN CONNECTION WITH THE USE OF THIS RECORDED-DATA.

OTHER SERVICES1
 OS1: TBI-TBD-TBN-TMG
 OS2:
 OS3:
 OS4:
 OS5:

OTHER SERVICES2
 OS1:
 OS2:
 OS3:
 OS4:
 OS5:

REMARKS: RUN NUMBER 1
 SERVICE:HORIZONTAL PUMP DOWN MEMORY BIT DEPTH: 14584' LOGGED TO: 3000'
 ALL SCALES AND PRESENTATIONS PER CLIENT REQUEST
 LIMESTONE MATRIX 2.71 g/cc USED FOR POROSITY MEASUREMENTS
 TOOLSTRING RAN WITH SWIVEL AND SMALL DE-CENTRALIZER
 TBHV REPRESENTS TOTAL BOREHOLE VOLUME, ft3
 ABHV REPRESENTS ANNULAR HOLE VOLUME, CALCULATED FOR 4.5" CSG, ft3
 TOTCO USED TO ACQUIRE LOG DEPTH
 LOG CORRELATED TO MWD GR
 RIG:LARIAT 20

 CREW: C.PARKER R.CRESSWELL Z.HOWARD

REMARKS: RUN NUMBER 2

RUN 1		
SERVICE ORDER #:	2122149985	
PROGRAM VERSION:	19C2-270	
FLUID LEVEL:	0 ft	
LOGGED INTERVAL	START	STOP

RUN 2		
SERVICE ORDER #:		
PROGRAM VERSION:		
FLUID LEVEL:		
LOGGED INTERVAL	START	STOP

EQUIPMENT DESCRIPTION

RUN 1

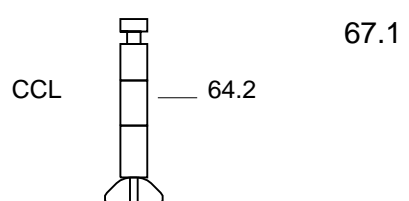
SURFACE EQUIPMENT

WITM (ThruBit)

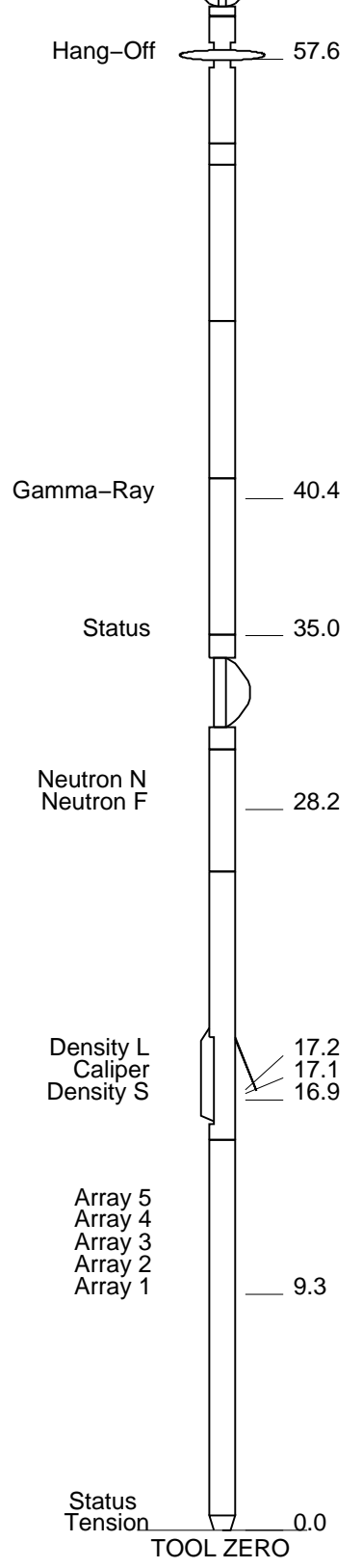
RUN 2

DOWNHOLE EQUIPMENT

TBT-A
 THEAD
 CCL
 BDOT-B 7
 THOT 29
 T10 1
 TBAT1 1
 TBAT2 35



TMG-A 34
TILE-A
TBN-A 18
NNLS-EWA 3752
TBD-A 12
GGLS-FZ 3354
TBI-A 29



MAXIMUM STRING DIAMETER 2.13 IN
MEASUREMENTS RELATIVE TO TOOL ZERO
ALL LENGTHS IN FEET

Schlumberger

MAIN PASS

MAXIS Field Log

Company: SANDRIDGE ENERGY

Well: BASCOM FARMS 3408 1-4H33

Input DLIS Files

ThruBit_005PUP

FN:4

14-Jun-2015 14:42 14649.0 FT

2900.5 FT

OP System Version: 19C2-270

TBT

SRPC-5307-ThruBit

PIP SUMMARY

- Integrated Cement Volume Major Pip Every 100 F3
- Integrated Cement Volume Minor Pip Every 10 F3
- Integrated Hole Volume Major Pip Every 100 F3
- Integrated Hole Volume Minor Pip Every 10 F3

Relative Bearing

(RB)

0 (DEG) 940

gr wrap4
From LHT1 to GR4

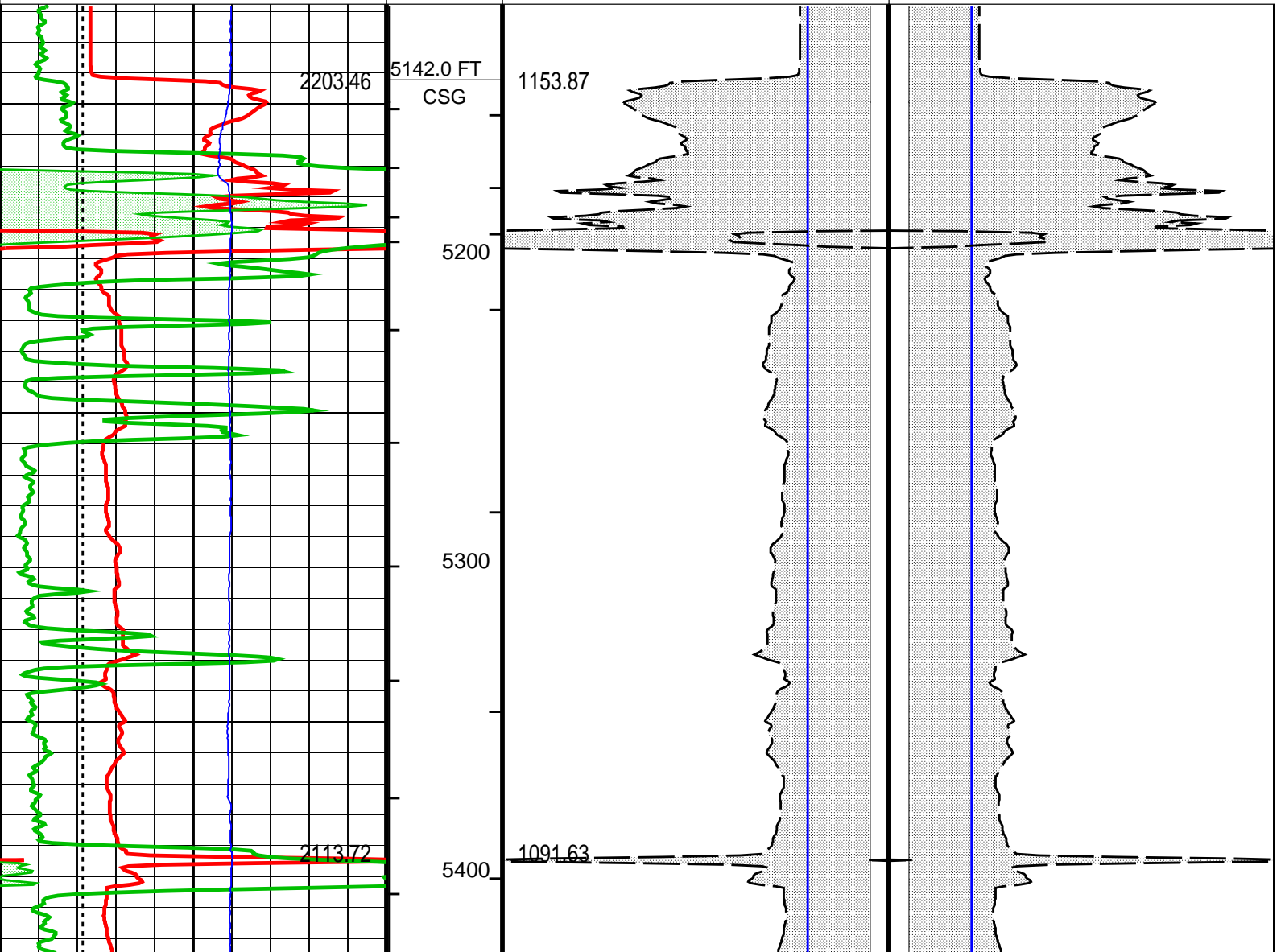
gr wrap3
From LHT1 to GR3

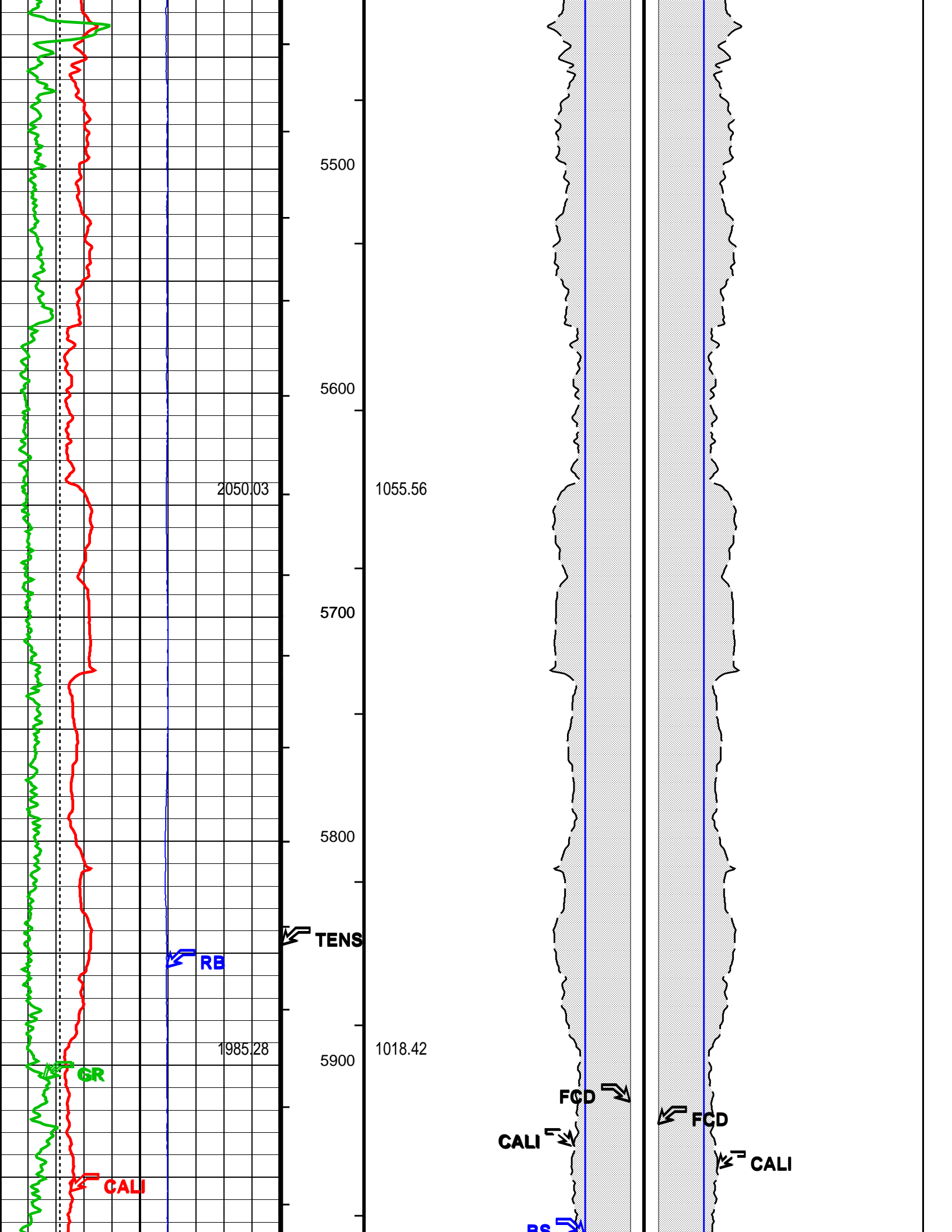
gr wrap2

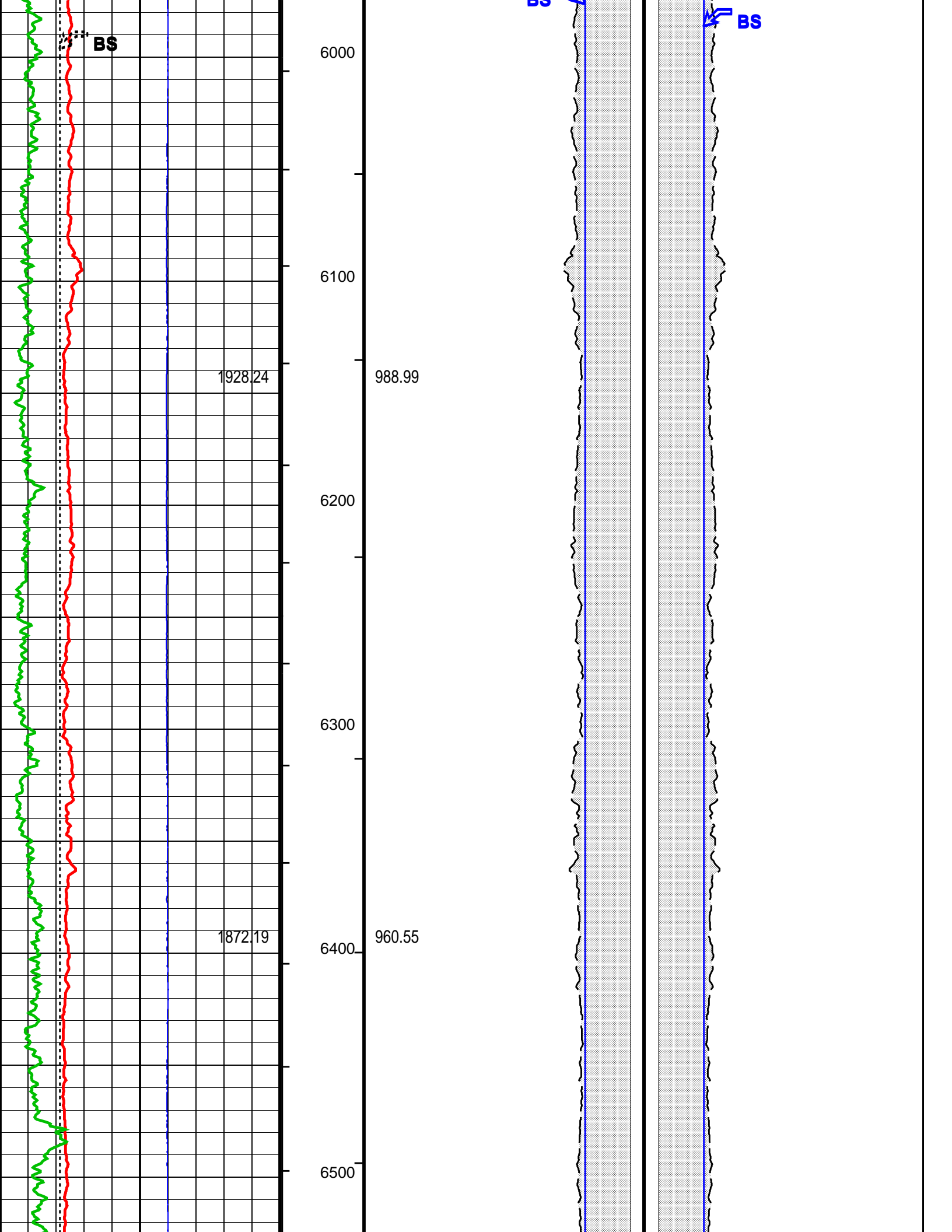
From LHT1 to GR2		
gr wrap1 From LHT1 to GR1		
Gamma Ray (GR)		
0	(GAPI)	150
Caliper (CALI)		
4	(IN)	14
Gamma Ray 4 (GR)		
600	(GAPI)	750
Gamma Ray 3 (GR)		
450	(GAPI)	600
Gamma Ray 2 (GR)		
300	(GAPI)	450
Gamma Ray 1 (GR)		
150	(GAPI)	300
Bit Size (BS)		
4	(IN)	14

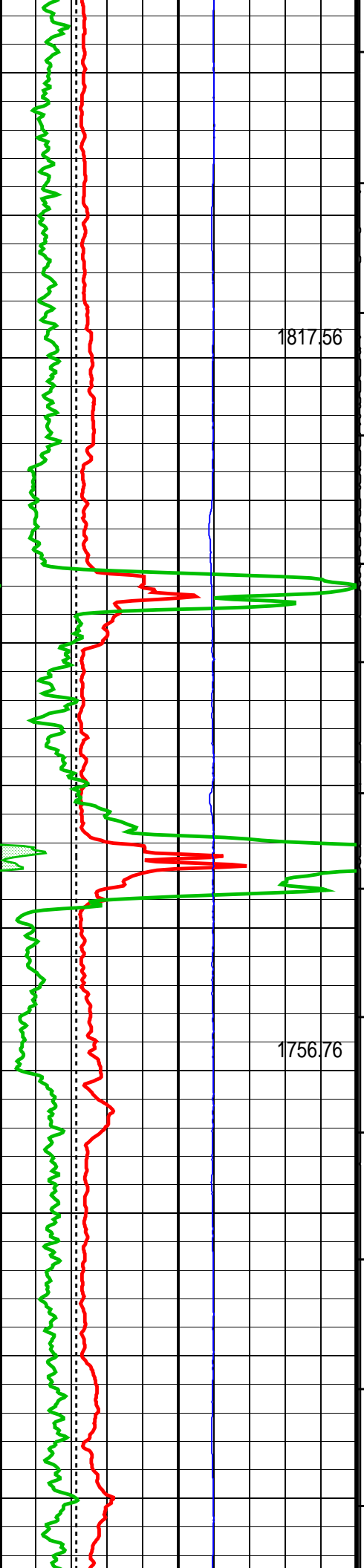
ANNULAR From CALI_1 to FCD_1			
CEMENT VOLUME (ICV) (----)		ANNULAR From FCD to CALI	
FCD_1 (FCD)		FCD (FCD)	
14	(IN)	4 4	(IN) 14
Caliper (CALI)		Caliper (CALI)	
14	(IN)	4 4	(IN) 14
Bit Size (BS)		Bit Size (BS)	
14	(IN)	4 4	(IN) 14

HOLE VOLUME (IHV) (----)		Tension (TENS) (LBF)
0		5000









1817.56

1756.76

6600

6700

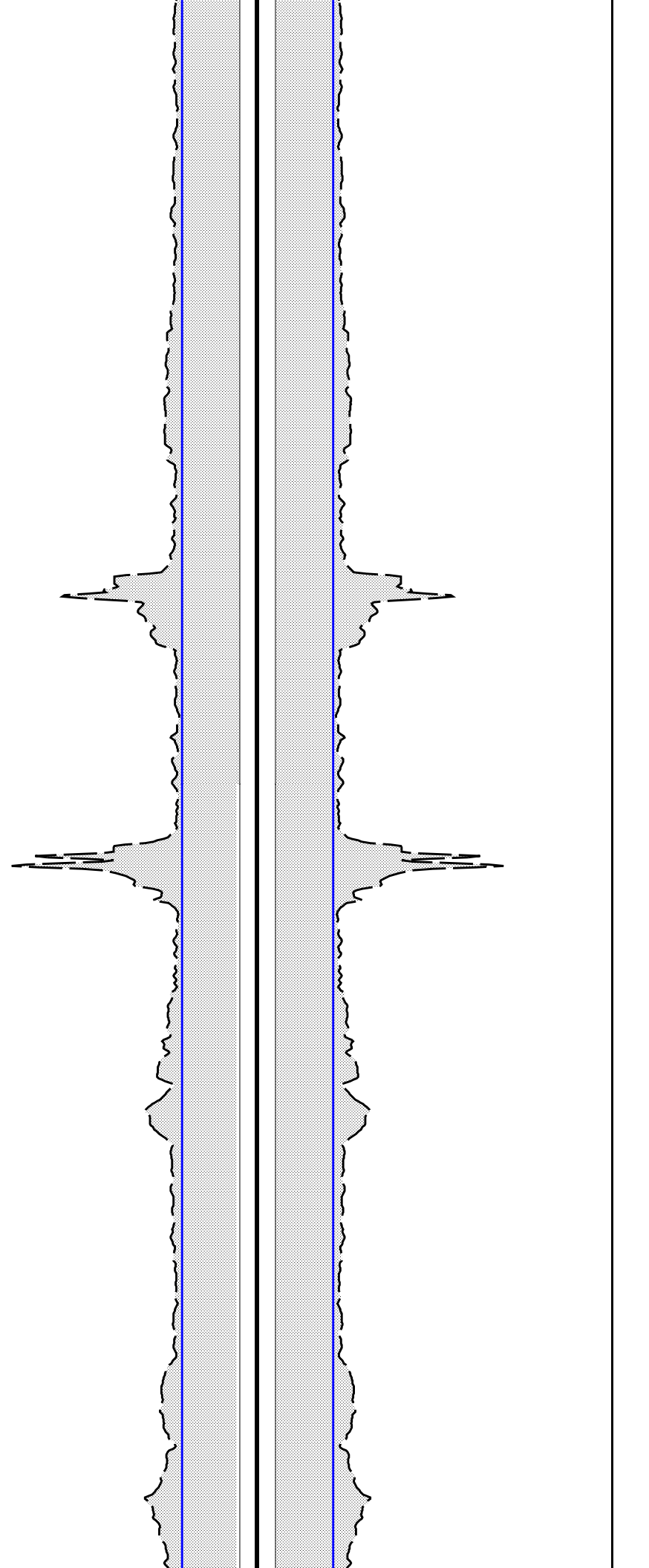
6800

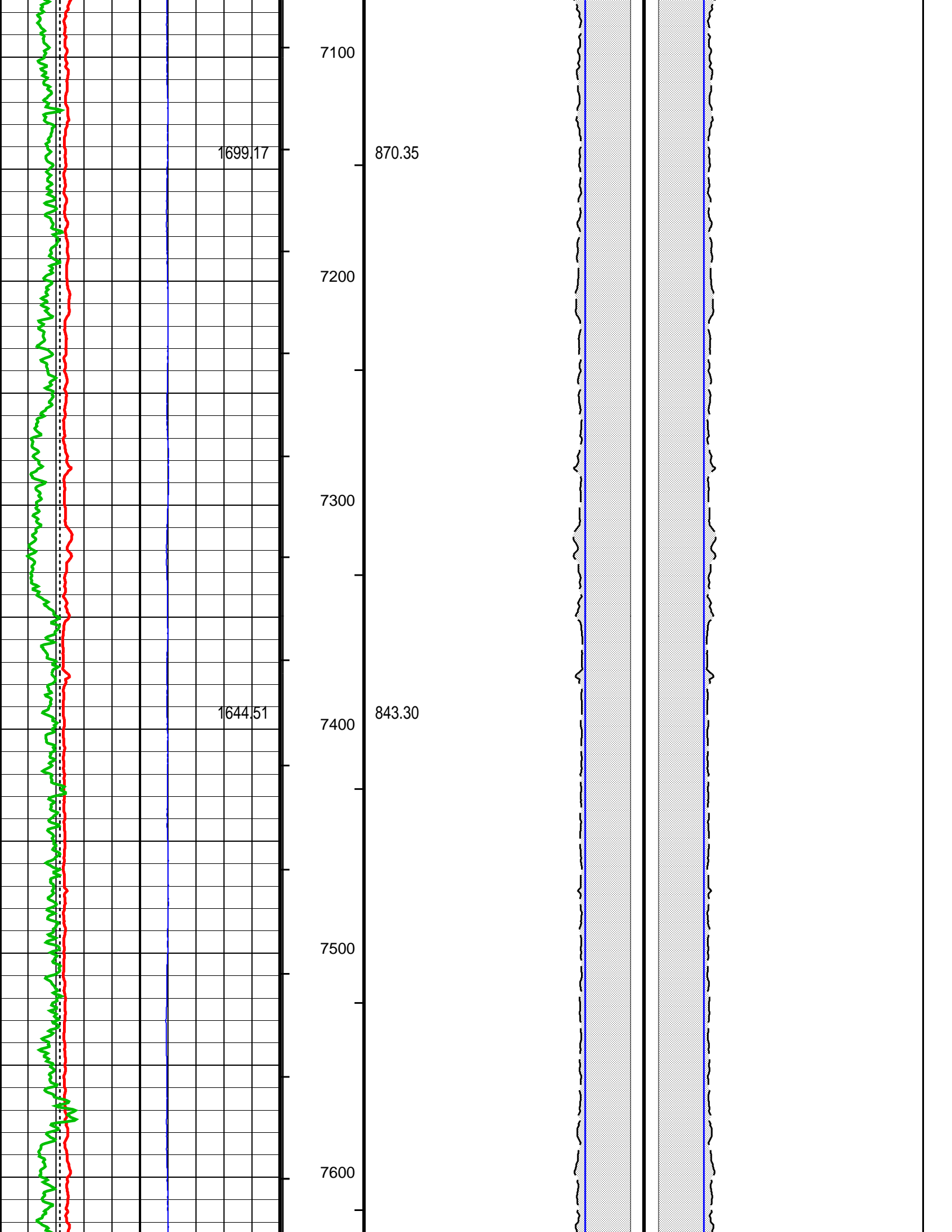
6900

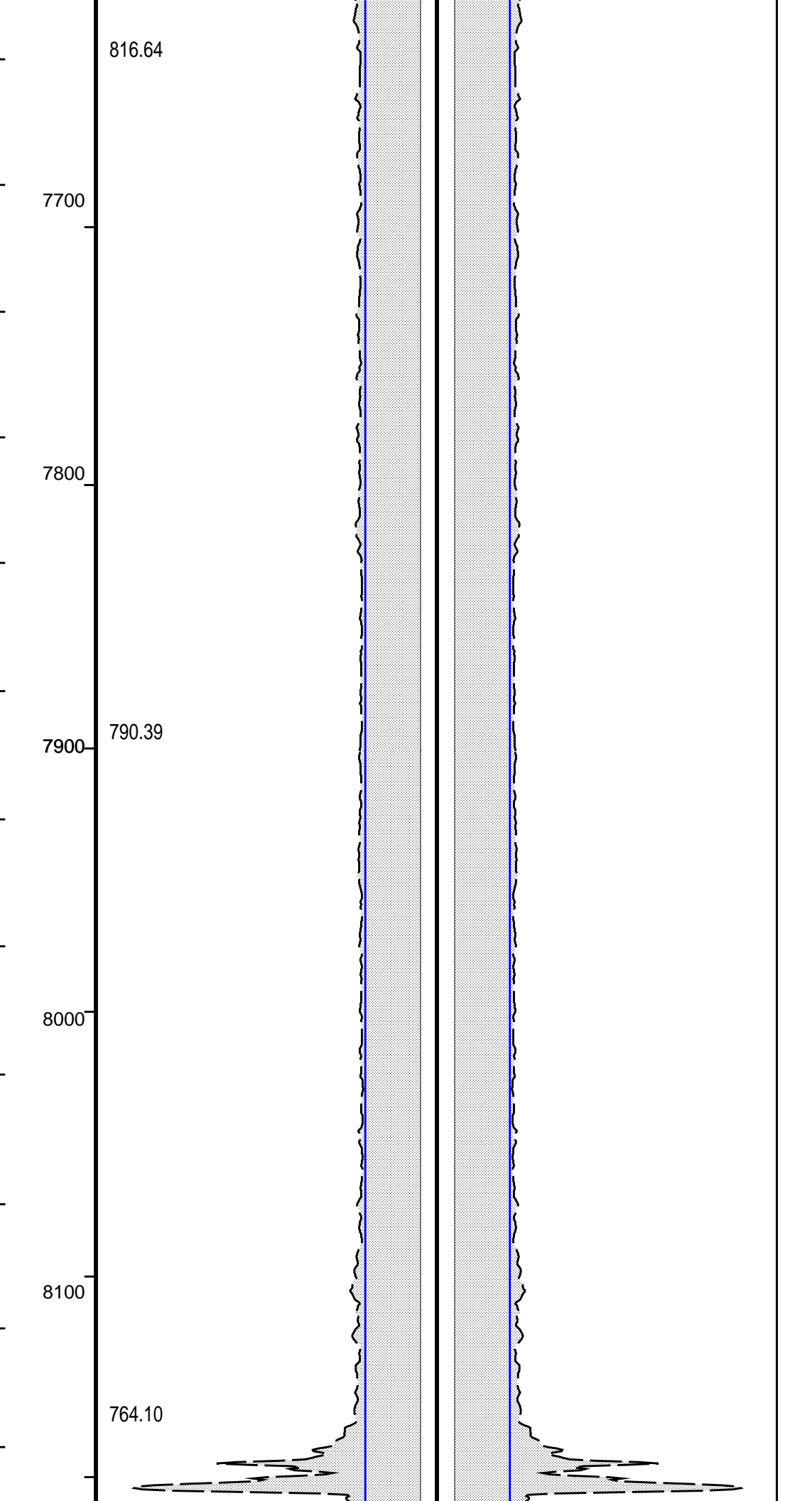
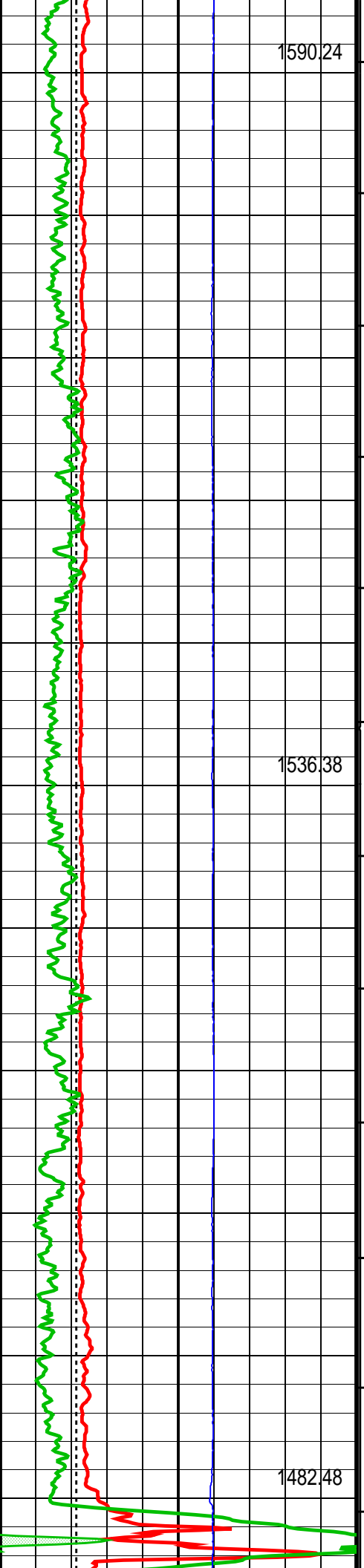
7000

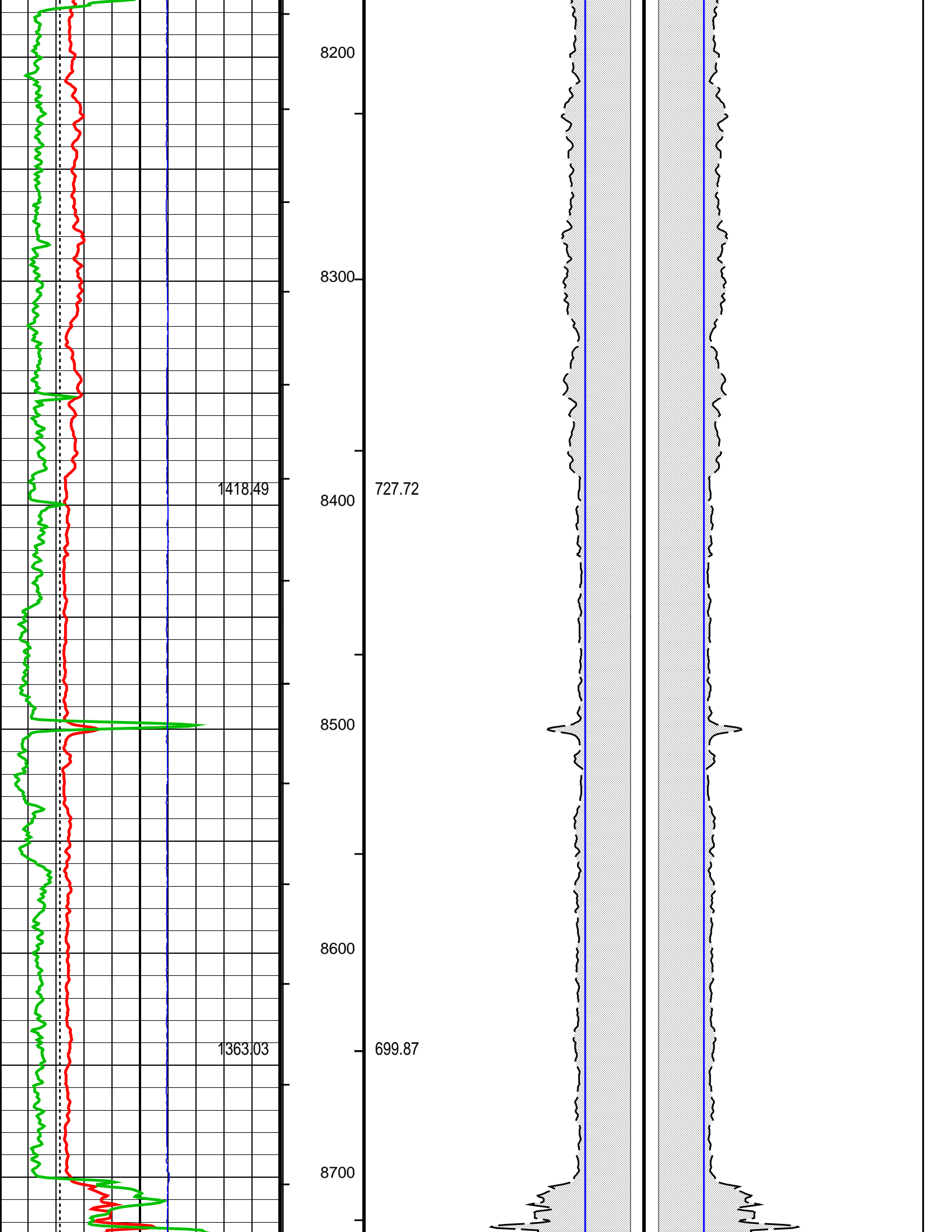
933.53

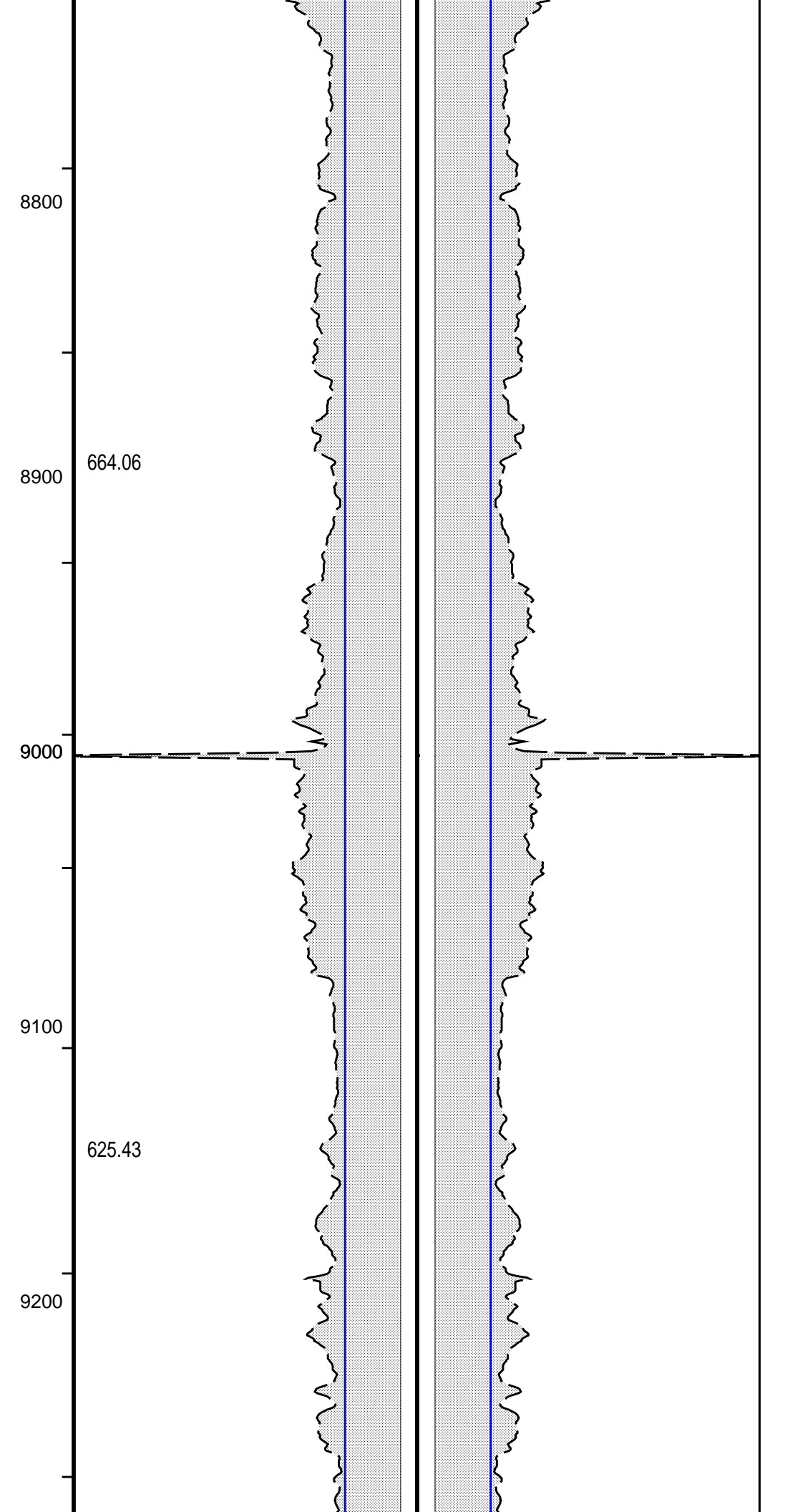
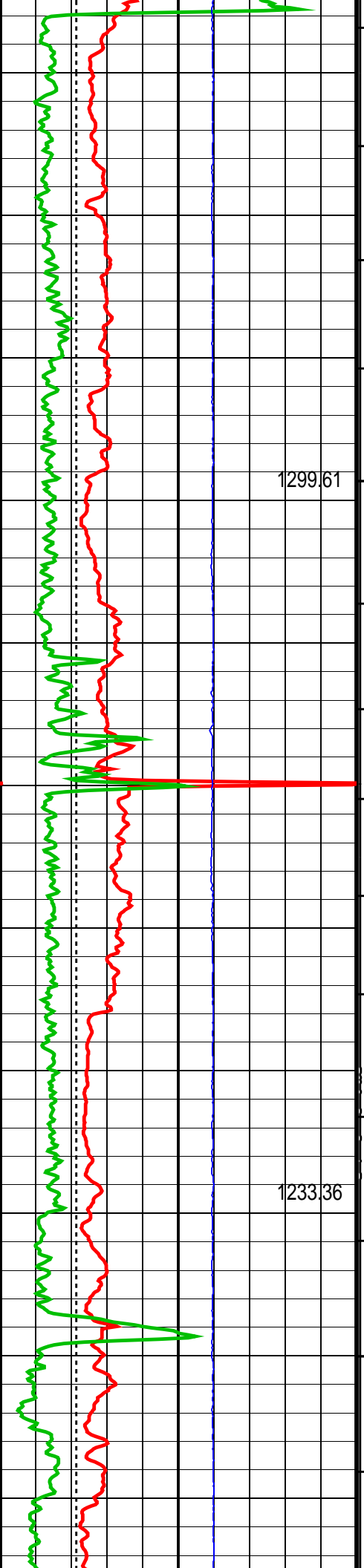
900.34

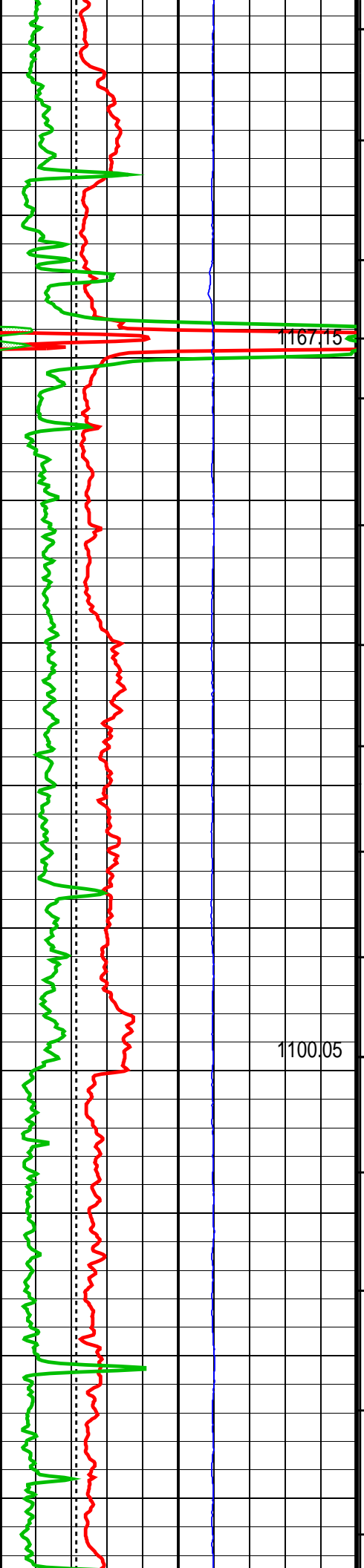












1167.15

1100.05

9300

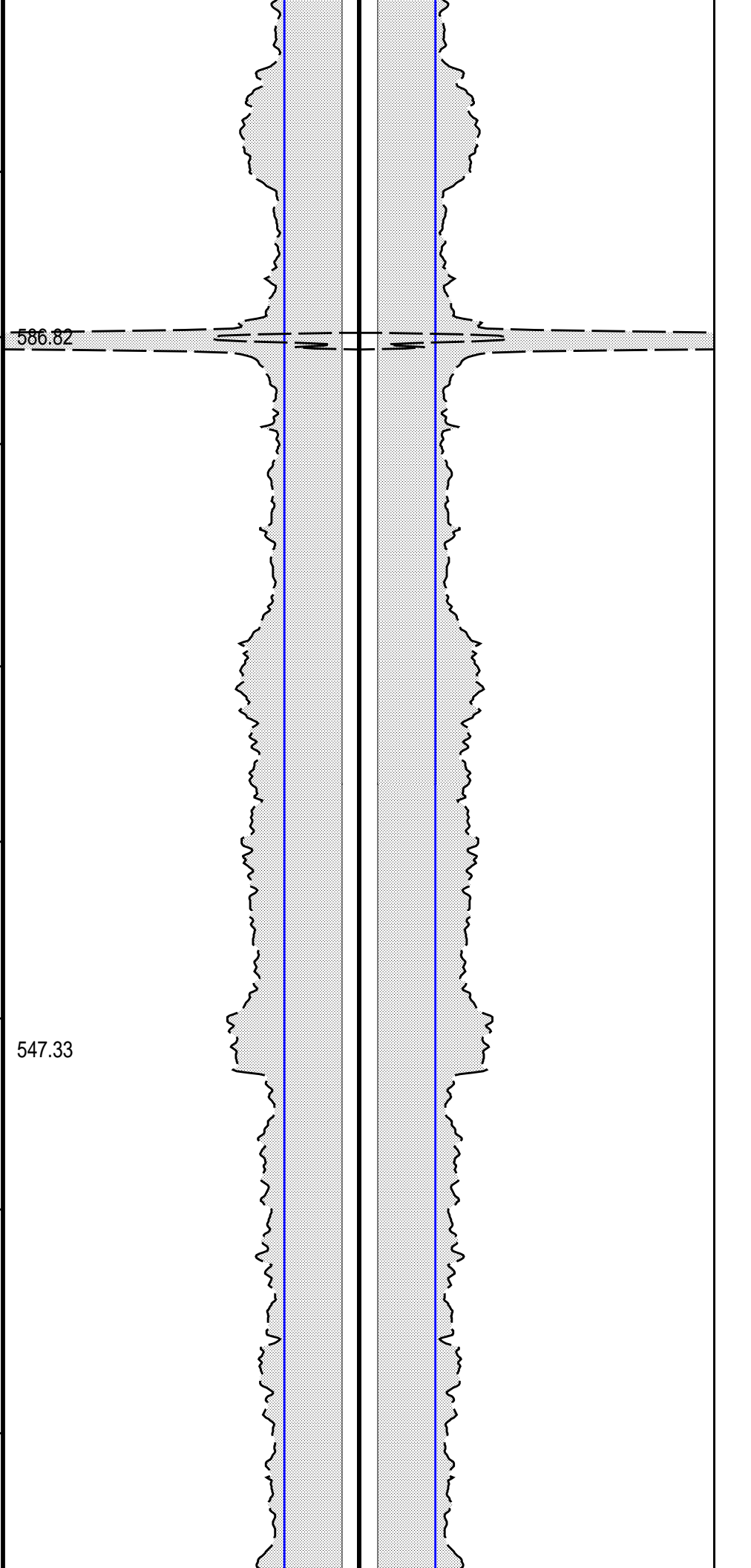
9400

9500

9600

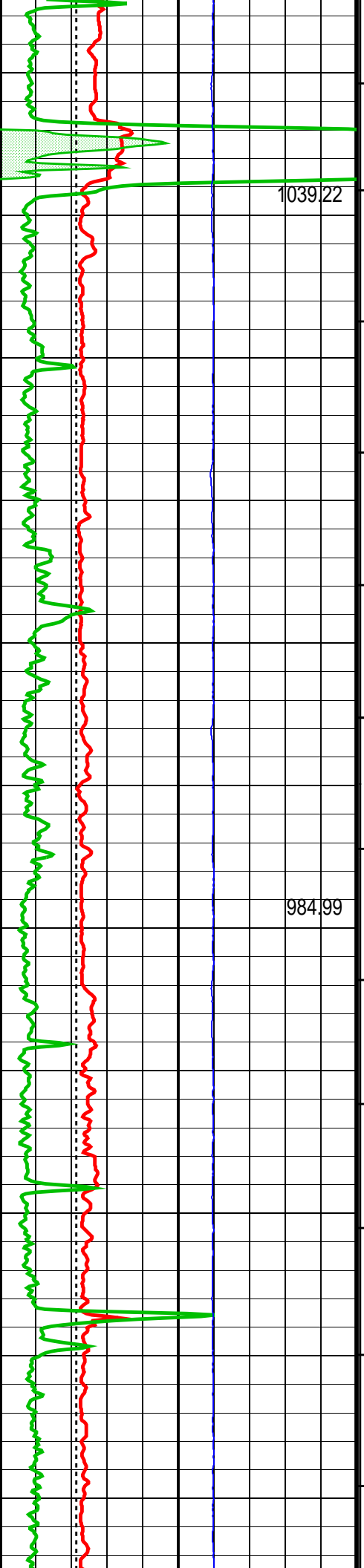
9700

9800



586.82

547.33



1039.22

9900

10000

10100

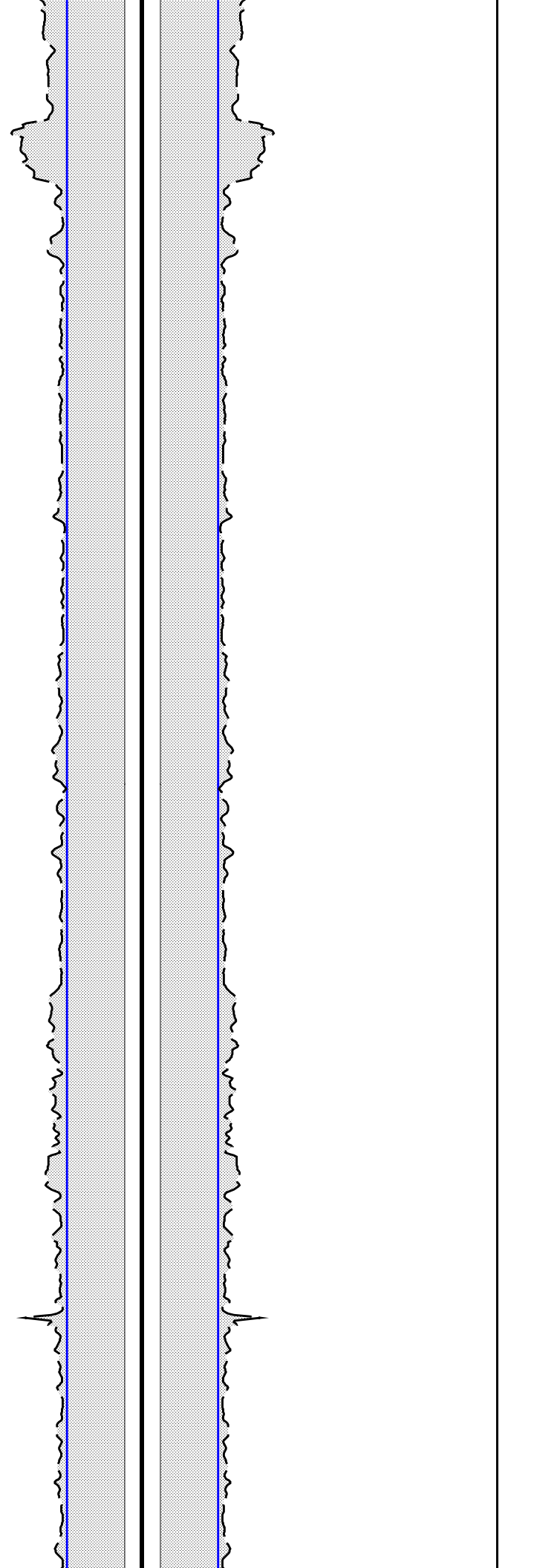
10200

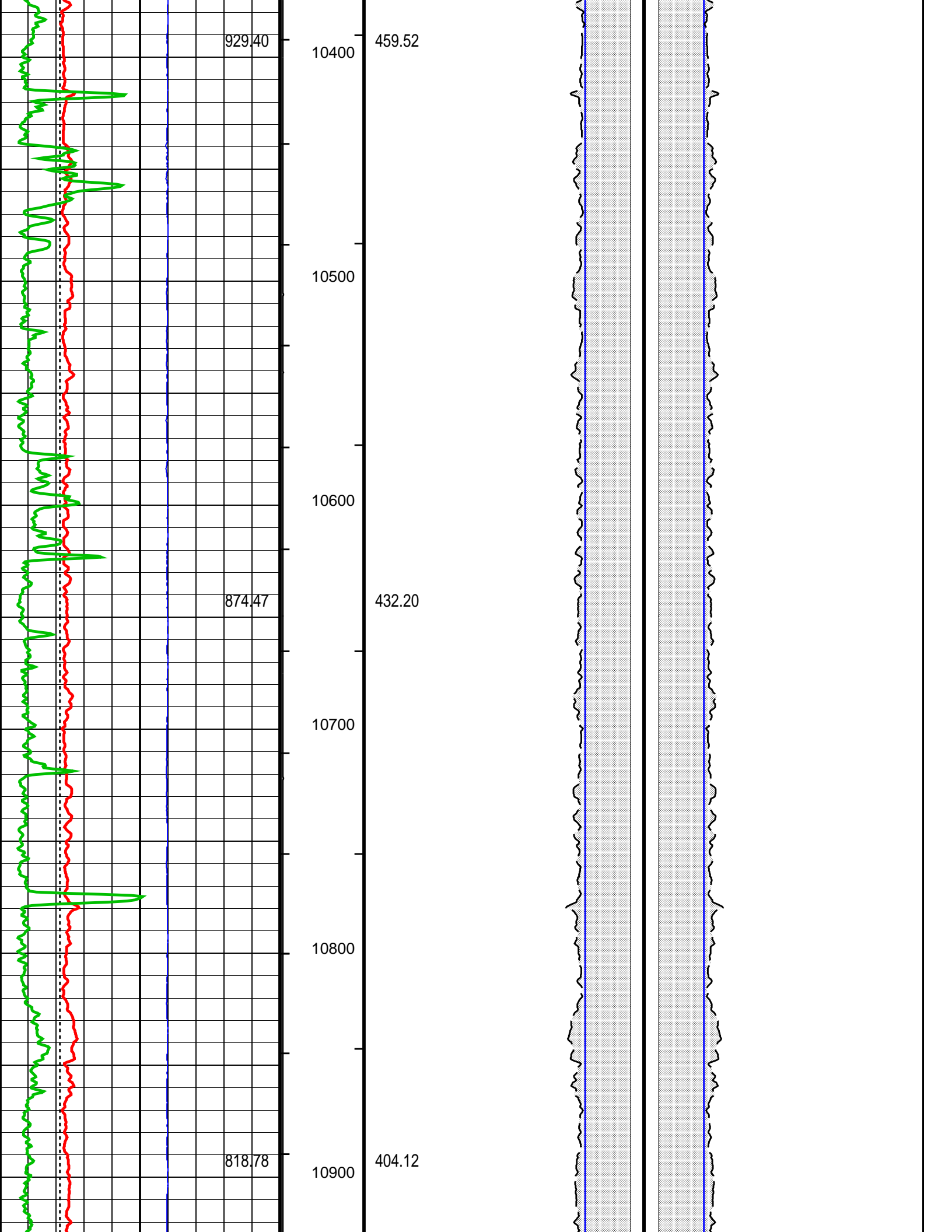
10300

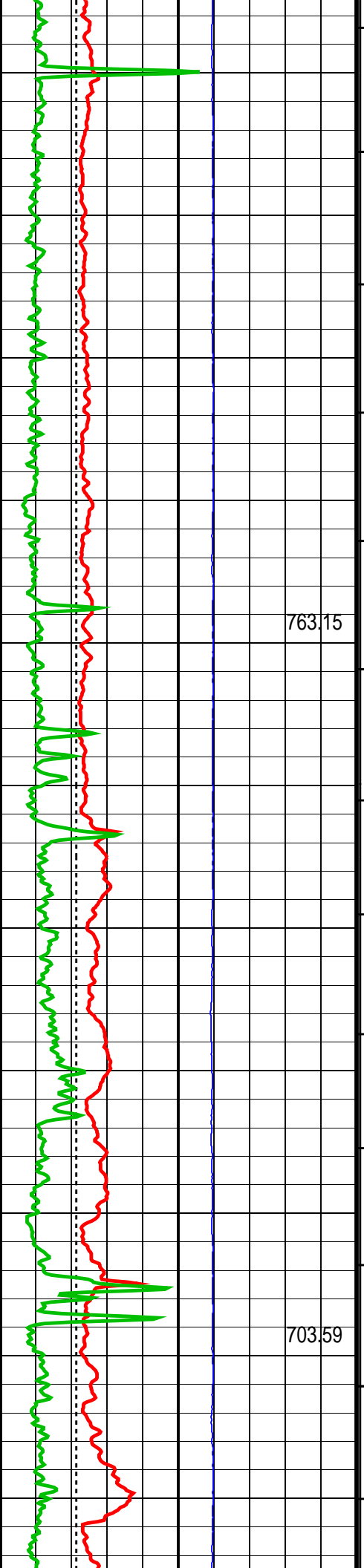
984.99

514.11

487.50







763.15

703.59

11000

11100

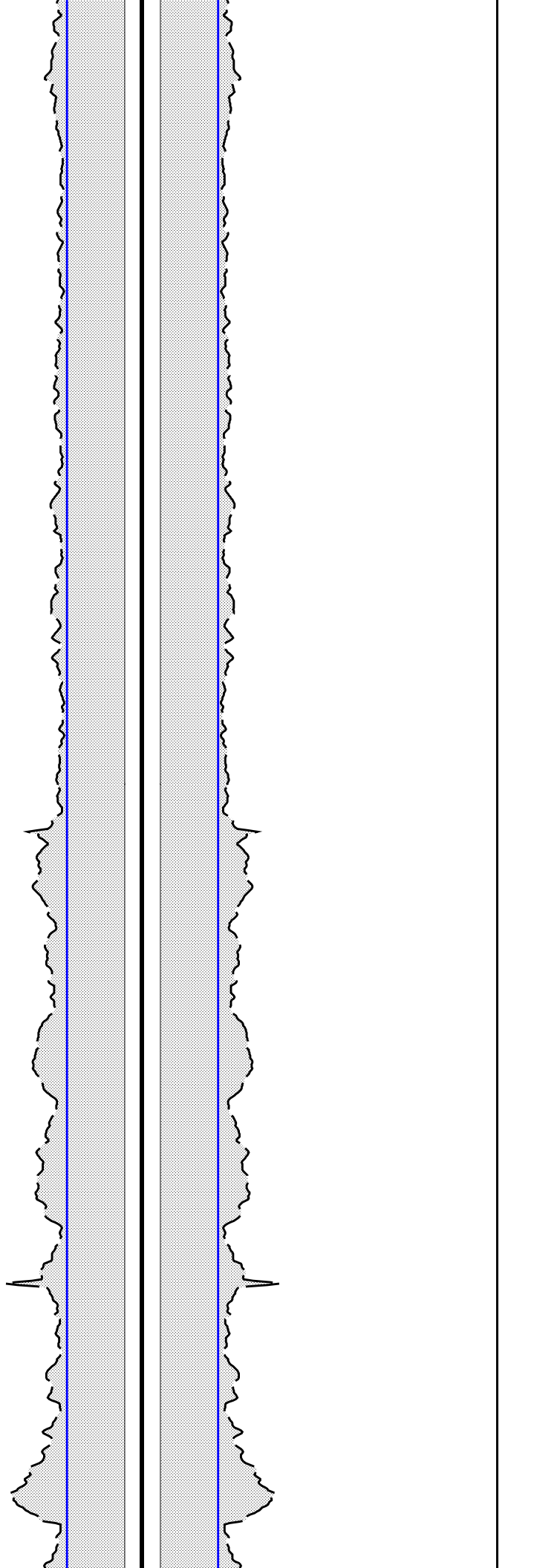
11200

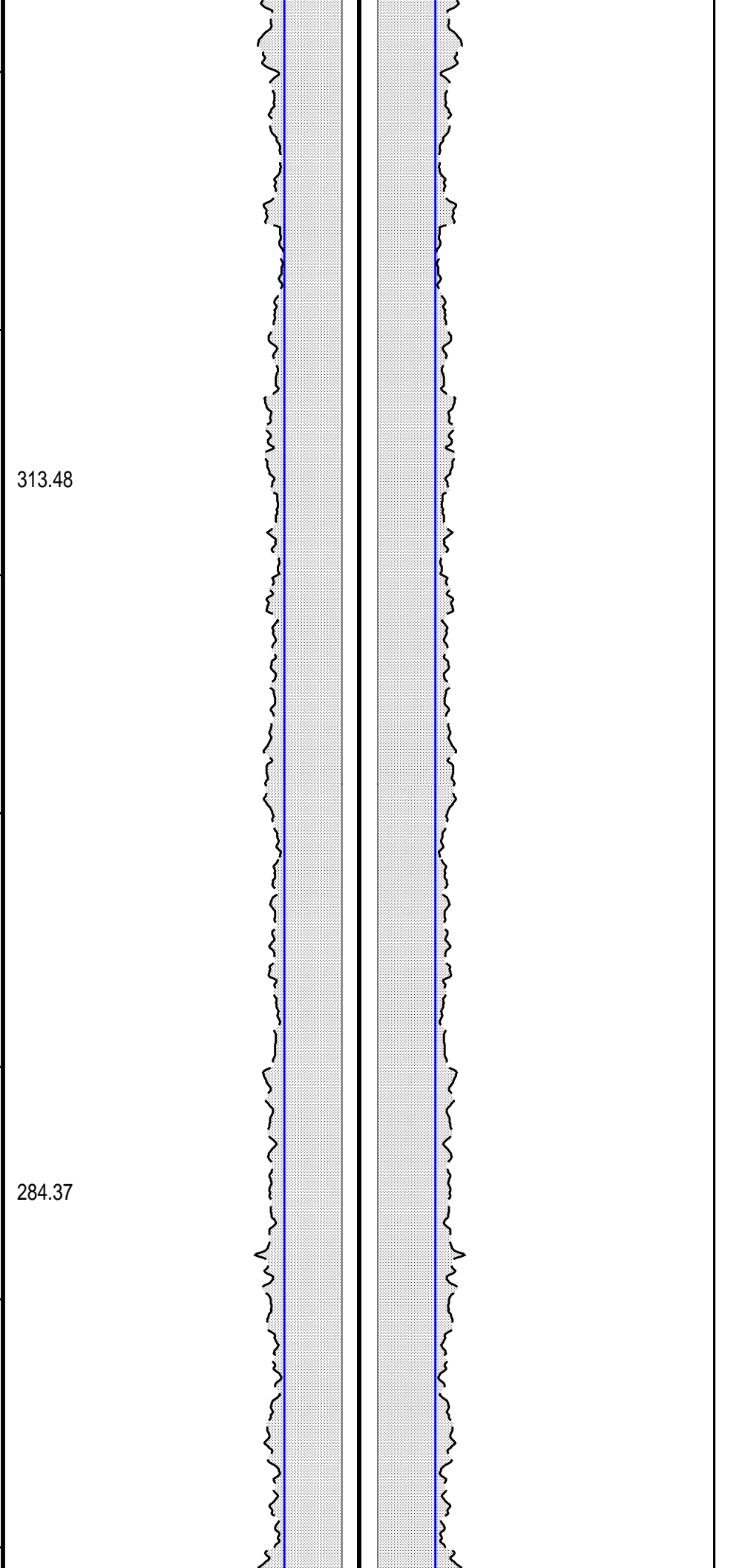
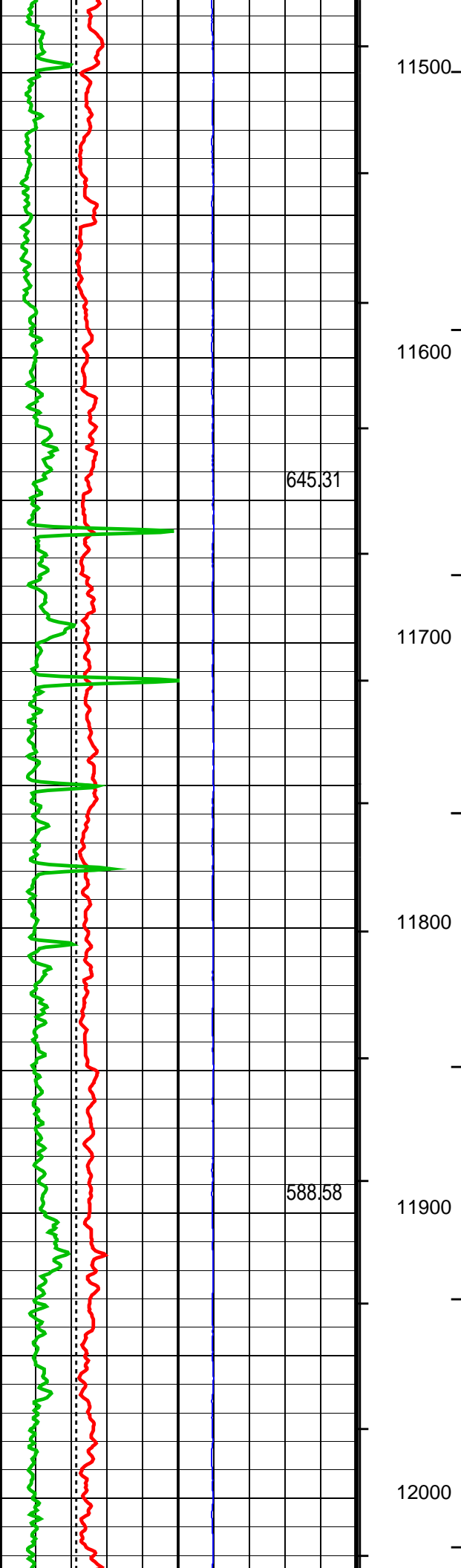
11300

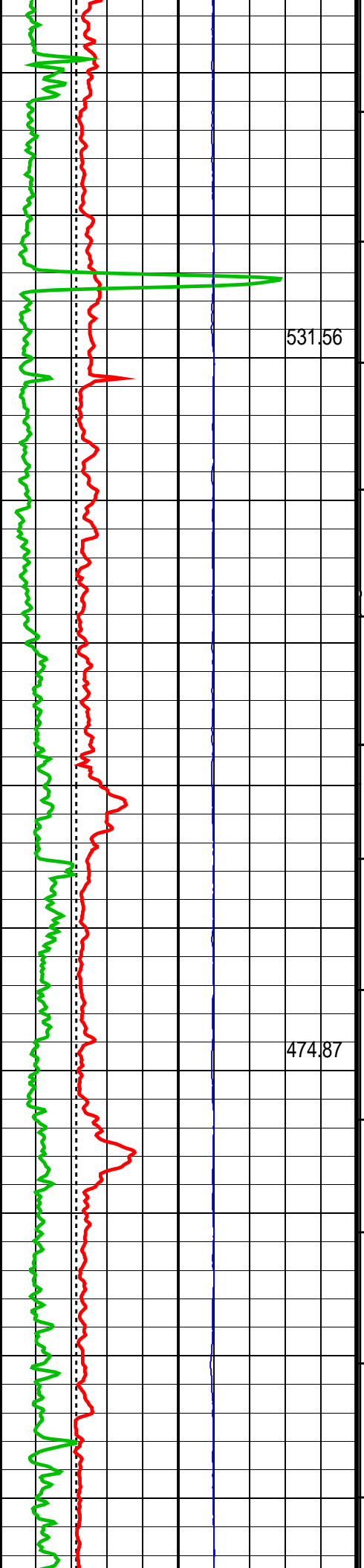
11400

376.10

344.15

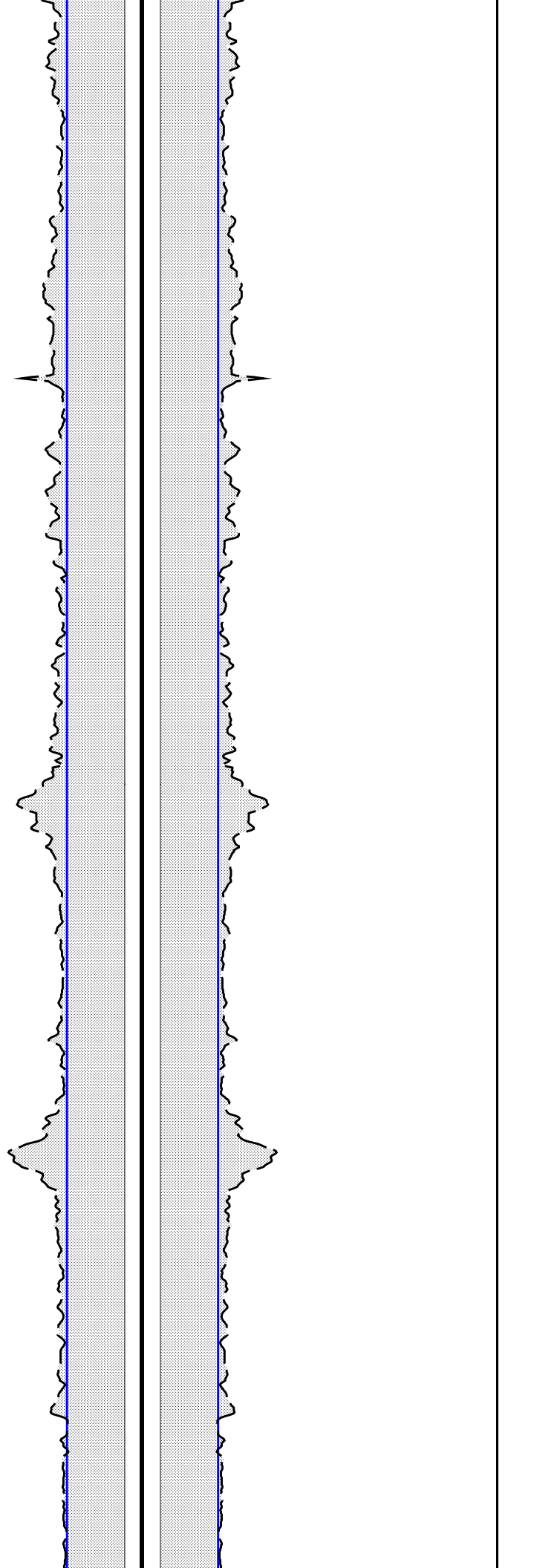


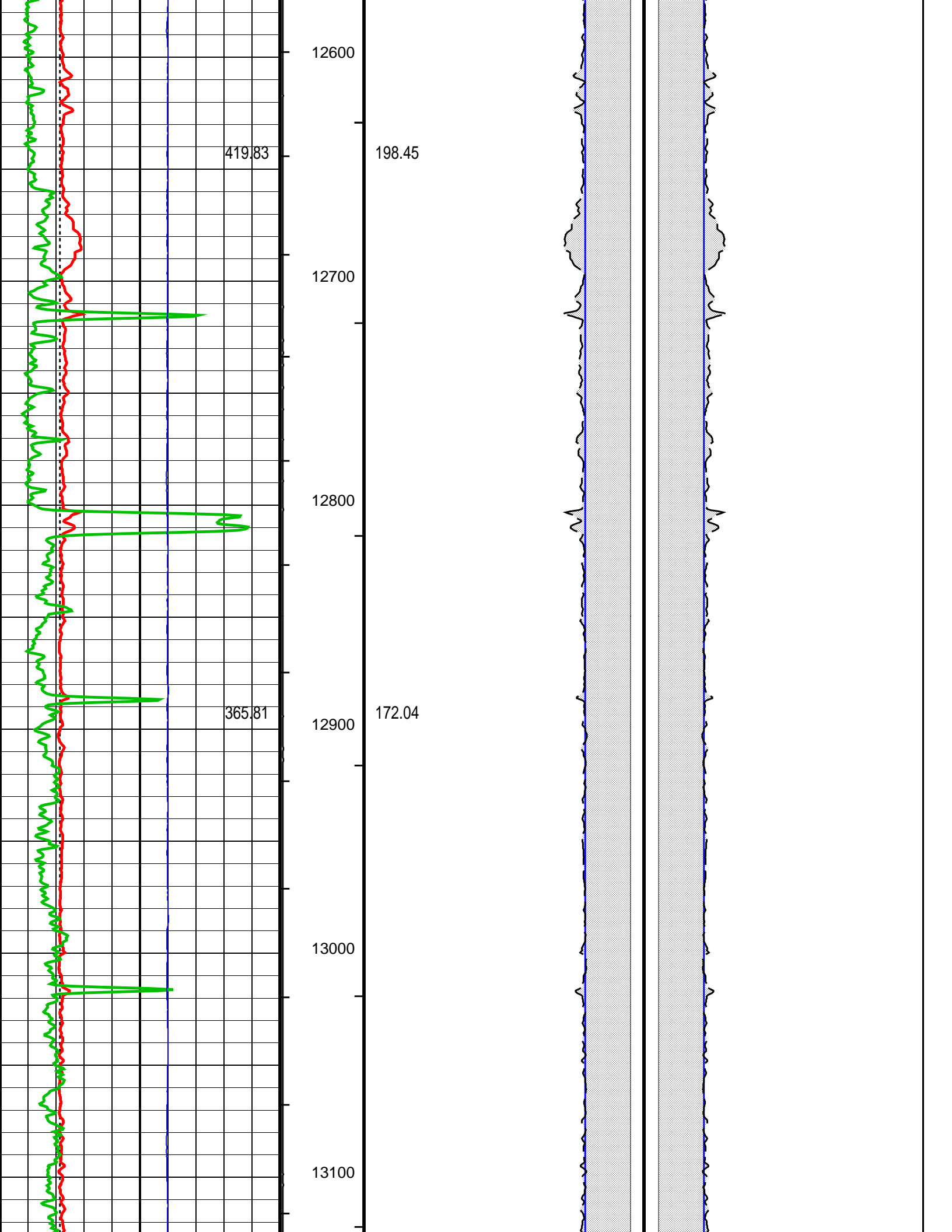


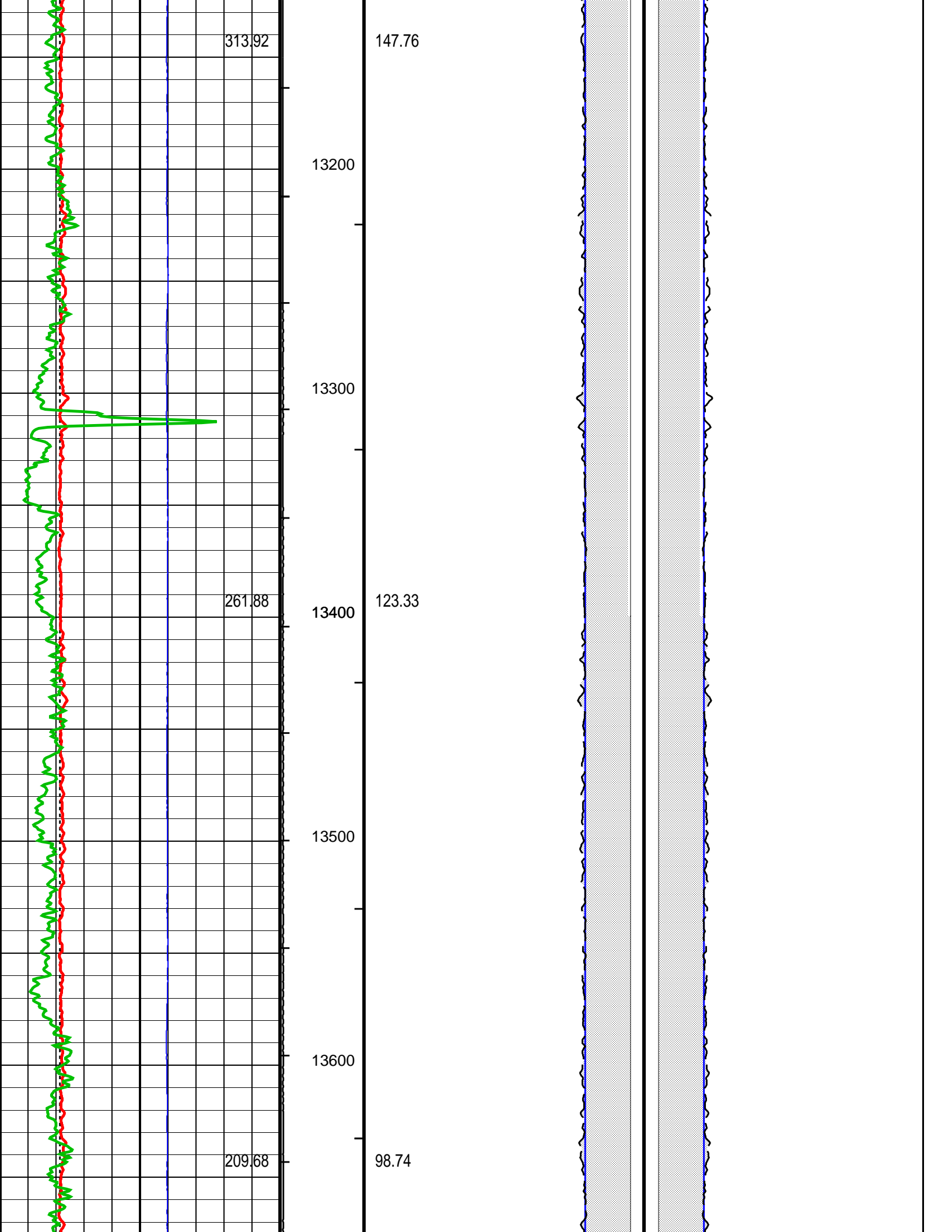


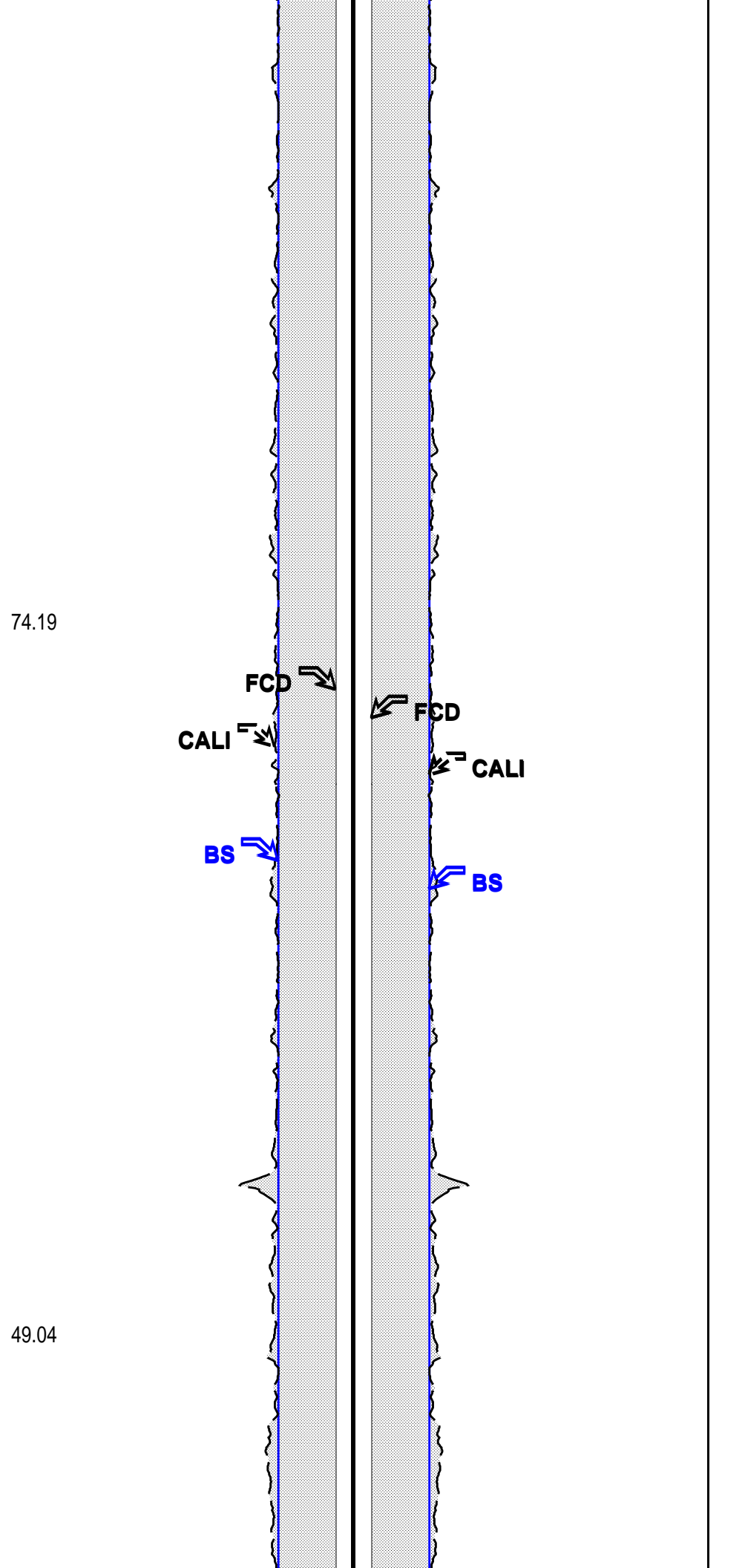
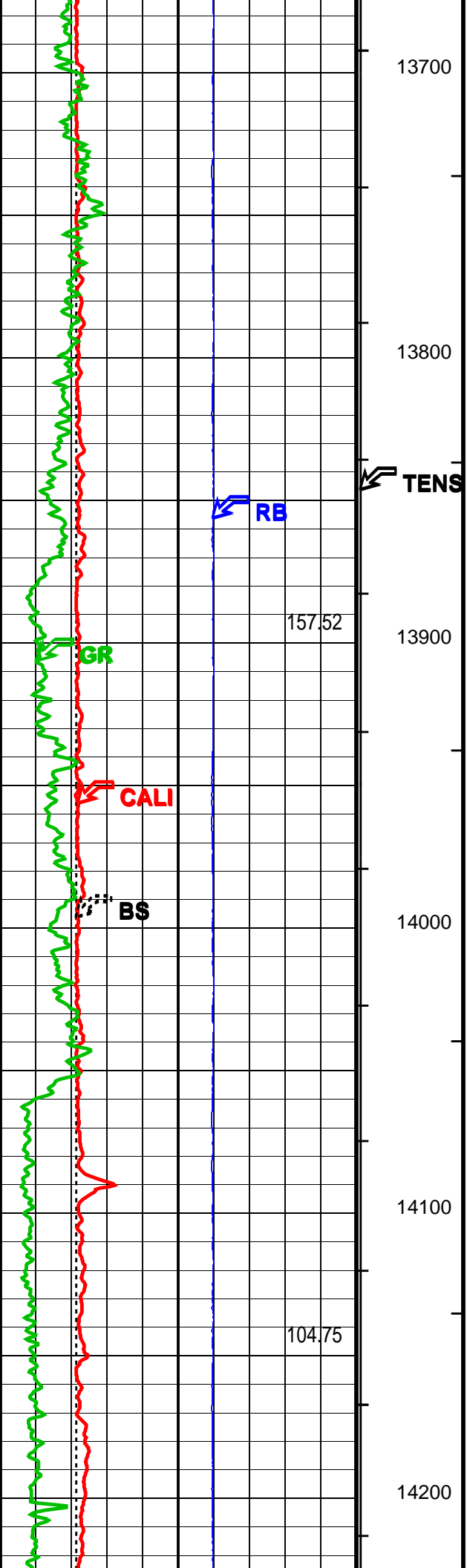
12100
12200
12300
12400
12500

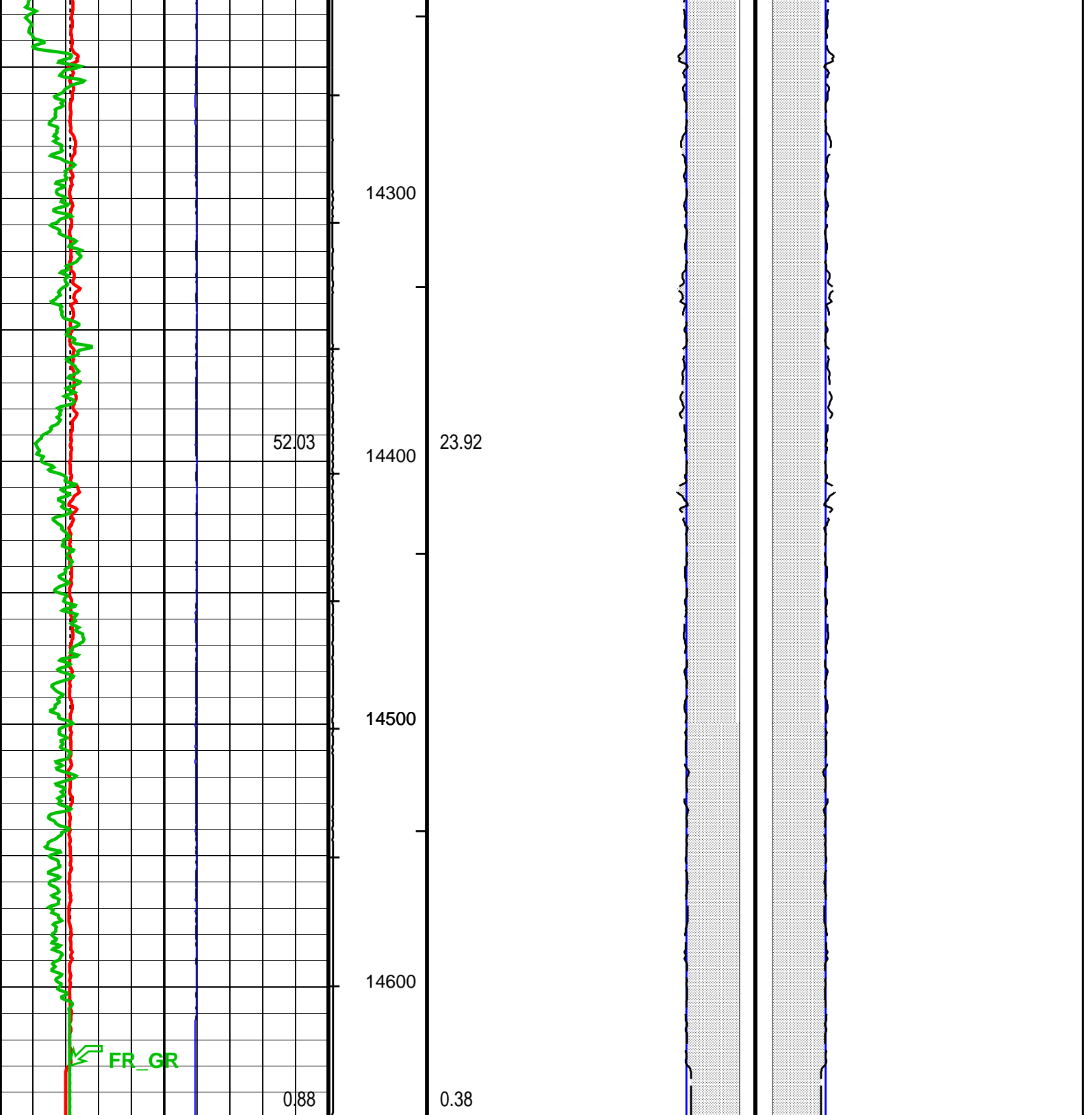
254.96
225.88











HOLE VOLUME (IHV) (----	Tension (TENS) (LBF)	Bit Size (BS)		Bit Size (BS)	
	0 5000	14	(IN)	4 4	(IN)
Bit Size (BS) (IN)	4	14	(IN)	4 4	14
Gamma Ray 1 (GR) (GAPI)	150	FCD_1 (FCD) (IN)		FCD (FCD) (IN)	
Gamma Ray 2 (GR) (GAPI)	300	14	(IN)	4 4	14
Gamma Ray 3 (GR) (GAPI)	450	CEMENT VOLUME (ICV) (----		ANNULAR From FCD to CALI	
450	600	ANNULAR From CALI_1 to FCD_1			

Gamma Ray 4 (GR)		
600	(GAPI)	750
Caliper (CALI)		
4	(IN)	14
Gamma Ray (GR)		
0	(GAPI)	150
gr wrap1 From LHT1 to GR1		
gr wrap2 From LHT1 to GR2		
gr wrap3 From LHT1 to GR3		
gr wrap4 From LHT1 to GR4		
		Relative Bearing (RB)
0	(DEG)	940

PIP SUMMARY

- Integrated Cement Volume Major Pip Every 100 F3
- Integrated Cement Volume Minor Pip Every 10 F3
- Integrated Hole Volume Major Pip Every 100 F3
- Integrated Hole Volume Minor Pip Every 10 F3

Parameters

DLIS Name	Description	Value
TBT-A: ThruBit String		
RB_OFFSET	Additional RB offset (degrees)	0.000 deg
FCD	HOLEV: Integrated Hole/Cement Volume Future Casing (Outer) Diameter	4.500 in
BS	System and Miscellaneous Bit Size	6.125 in

Format: TB_BOREHOLE Vertical Scale: 2" per 100' Graphics File Created: 14-Jun-2015 14:48

OP System Version: 19C2-270

TBT SRPC-5307-ThruBit

Input DLIS Files

ThruBit_005PUP	FN:4	14-Jun-2015 14:42	14649.0 FT	2900.5 FT
----------------	------	-------------------	------------	-----------



CALIBRATIONS

MAXIS Field Log

Primary Equipment:
 Induction Resistivity
 Density
 Gamma-Ray Logging Source
 Thermal Neutron
 Neutron Logging Source
 Telemetry Memory GR
 Battery
 Battery

TBI - A 29
 TBD - A 12
 GGLS - FZ 3354
 TBN - A 18
 NNLS - EWA 3752
 TMG - A 34
 TBAT - 35
 TBAT - 1

Auxiliary Equipment:

ThruBit String Master Calibration					
TBI Master Calibration Sonde Errors					
Freq 1, A1, R	Value	Nominal	Freq 1, A1, X	Value	Nominal
	-467.536	-457.000		-173.924	300.000
-556.000 (Minimum)	(Nominal)	-387.000 (Maximum)	-500.000 (Minimum)	(Nominal)	1100.000 (Maximum)
Freq 1, A2, R	Value	Nominal	Freq 1, A2, X	Value	Nominal
	-153.226	-141.000		-21.1478	320.000
-182.000 (Minimum)	(Nominal)	-120.000 (Maximum)	-75.0000 (Minimum)	(Nominal)	700.000 (Maximum)
Freq 1, A3, R	Value	Nominal	Freq 1, A3, X	Value	Nominal
	-31.1454	-28.0000		-116.738	50.0000
-38.0000 (Minimum)	(Nominal)	-18.0000 (Maximum)	-375.000 (Minimum)	(Nominal)	475.000 (Maximum)
Freq 1, A4, R	Value	Nominal	Freq 1, A4, X	Value	Nominal
	-17.1333	-16.0000		251.903	300.000
-24.0000 (Minimum)	(Nominal)	-8.00000 (Maximum)	25.0000 (Minimum)	(Nominal)	575.000 (Maximum)
Freq 1, A5, R	Value	Nominal	Freq 1, A5, X	Value	Nominal
	-15.8284	-14.0000		104.546	150.000
-21.0000 (Minimum)	(Nominal)	-7.00000 (Maximum)	25.0000 (Minimum)	(Nominal)	300.000 (Maximum)
Freq 2, A1, R	Value	Nominal	Freq 2, A1, X	Value	Nominal
	-242.971	-237.000		-146.889	150.000
-313.000 (Minimum)	(Nominal)	-186.000 (Maximum)	-375.000 (Minimum)	(Nominal)	675.000 (Maximum)
Freq 2, A2, R	Value	Nominal	Freq 2, A2, X	Value	Nominal
	-100.450	-92.0000		-42.8731	160.000
-126.000 (Minimum)	(Nominal)	-76.0000 (Maximum)	-100.000 (Minimum)	(Nominal)	425.000 (Maximum)
Freq 2, A3, R	Value	Nominal	Freq 2, A3, X	Value	Nominal
	-22.6550	-21.0000		-127.306	-20.0000
-28.0000 (Minimum)	(Nominal)	-13.0000 (Maximum)	-325.000 (Minimum)	(Nominal)	250.000 (Maximum)
Freq 2, A4, R	Value	Nominal	Freq 2, A4, X	Value	Nominal
	-20.2612	-20.0000		78.3481	100.000
-28.0000 (Minimum)	(Nominal)	-10.0000 (Maximum)	-75.0000 (Minimum)	(Nominal)	275.000 (Maximum)
Freq 2, A5, R	Value	Nominal	Freq 2, A5, X	Value	Nominal
	-20.9269	-20.0000		-31.1602	-25.0000
-27.0000 (Minimum)	(Nominal)	-10.0000 (Maximum)	-125.000 (Minimum)	(Nominal)	100.000 (Maximum)
Freq 3, A1, R	Value	Nominal	Freq 3, A1, X	Value	Nominal
	-153.010	-149.000		-183.457	25.0000
-213.000 (Minimum)	(Nominal)	-108.000 (Maximum)	-375.000 (Minimum)	(Nominal)	425.000 (Maximum)
Freq 3, A2, R	Value	Nominal	Freq 3, A2, X	Value	Nominal
	-76.5351	-70.0000		-73.9865	70.0000
-101.000 (Minimum)	(Nominal)	-57.0000 (Maximum)	-125.000 (Minimum)	(Nominal)	250.000 (Maximum)
Freq 3, A3, R	Value	Nominal	Freq 3, A3, X	Value	Nominal
	-18.4625	-17.0000		-150.956	-90.0000
-23.0000 (Minimum)	(Nominal)	-11.0000 (Maximum)	-300.000 (Minimum)	(Nominal)	125.000 (Maximum)

(Minimum)	(Nominal)	(Maximum)		(Minimum)	(Nominal)	(Maximum)	
	Freq 3, A4, R	Value	Nominal		Freq 3, A4, X	Value	Nominal
		-22.0296	-22.0000			-36.4678	-50.0000
-31.0000 (Minimum)	(Nominal)	-11.0000 (Maximum)		-200.000 (Minimum)	(Nominal)	100.000 (Maximum)	
	Freq 3, A5, R	Value	Nominal		Freq 3, A5, X	Value	Nominal
		-23.6833	-22.0000			-132.227	-110.000
-32.0000 (Minimum)	(Nominal)	-11.0000 (Maximum)		-250.000 (Minimum)	(Nominal)	0 (Maximum)	
	Freq 4, A1, R	Value	Nominal		Freq 4, A1, X	Value	Nominal
		-83.8694	-80.0000			-281.507	-190.000
-128.000 (Minimum)	(Nominal)	-54.0000 (Maximum)		-450.000 (Minimum)	(Nominal)	75.0000 (Maximum)	
	Freq 4, A2, R	Value	Nominal		Freq 4, A2, X	Value	Nominal
		-55.2497	-50.0000			-135.036	-75.0000
-80.0000 (Minimum)	(Nominal)	-41.0000 (Maximum)		-200.000 (Minimum)	(Nominal)	50.0000 (Maximum)	
	Freq 4, A3, R	Value	Nominal		Freq 4, A3, X	Value	Nominal
		-14.7150	-14.0000			-204.979	-190.000
-19.0000 (Minimum)	(Nominal)	-8.00000 (Maximum)		-350.000 (Minimum)	(Nominal)	-25.0000 (Maximum)	
	Freq 4, A4, R	Value	Nominal		Freq 4, A4, X	Value	Nominal
		-25.4036	-25.0000			-206.577	-235.000
-37.0000 (Minimum)	(Nominal)	-11.0000 (Maximum)		-400.000 (Minimum)	(Nominal)	-75.0000 (Maximum)	
	Freq 4, A5, R	Value	Nominal		Freq 4, A5, X	Value	Nominal
		-29.7870	-28.0000			-305.092	-300.000
-43.0000 (Minimum)	(Nominal)	-12.0000 (Maximum)		-475.000 (Minimum)	(Nominal)	-100.000 (Maximum)	

Master: 29-May-2015 12:01

ThruBit String Master Calibration							
TBI Master Calibration COMPLEX GAINS							
(Minimum)	(Nominal)	(Maximum)		(Minimum)	(Nominal)	(Maximum)	
	Freq 1, R	Value	Nominal		Freq 1, X	Value	Nominal
		0.9941	1.000			-0.001461	0
		0.9907	1.000			-0.0005546	0
		0.9972	1.000			-0.006284	0
		0.9913	1.000			0.003712	0
		1.024	1.000			-9.477E-00	0
0.9500 (Minimum)	(Nominal)	1.050 (Maximum)		-0.05000 (Minimum)	(Nominal)	0.05000 (Maximum)	
	Freq 2, R	Value	Nominal		Freq 2, X	Value	Nominal
		0.9899	1.000			-0.01016	0
		0.9856	1.000			-0.008586	0
		0.9862	1.000			-0.007472	0
		0.9865	1.000			-0.005079	0
		1.020	1.000			-0.009475	0
0.9500 (Minimum)	(Nominal)	1.050 (Maximum)		-0.05000 (Minimum)	(Nominal)	0.05000 (Maximum)	
	Freq 3, R	Value	Nominal		Freq 3, X	Value	Nominal
		0.9953	1.000			-0.001410	0
		0.9913	1.000			0.0001592	0
		0.9915	1.000			0.0007384	0
		0.9897	1.000			0.003222	0
		1.028	1.000			-0.0005339	0
0.9500 (Minimum)	(Nominal)	1.050 (Maximum)		-0.05000 (Minimum)	(Nominal)	0.05000 (Maximum)	
	Freq 4, R	Value	Nominal		Freq 4, X	Value	Nominal
		0.9975	1.000			-0.01198	0

		0.9929	1.000			-0.01053	0
		0.9953	1.000			-0.01246	0
		0.9890	1.000			-0.007667	0
		1.040	1.000			-0.01536	0
0.9300 (Minimum)	1.070 (Maximum)			-0.05000 (Minimum)	0.05000 (Maximum)		
Master: 29-May-2015 12:01							

ThruBit String Master Calibration								
TBD Caliper Master Calibration								
Caliper 12in Ring IN	Value	Nominal	Caliper 9in Ring IN	Value	Nominal	Caliper 6in Ring IN	Value	Nominal
	1890.7	1949.8		2052.2	2096.7		2219.4	2285.7
1799.8 (Minimum)	2099.8 (Maximum)		1946.7 (Minimum)	2246.7 (Maximum)		2135.7 (Minimum)	2435.7 (Maximum)	
Master: 24-Mar-2015 13:40								

ThruBit String Master Calibration						
TBD Density Master Calibration. Ti Window, ThruBit blocks						
LS1 Background CPS	Value	Nominal	SS1 Background CPS	Value	Nominal	
	127.93	143.00		133.39	143.00	
100.00 (Minimum)	186.00 (Maximum)		100.00 (Minimum)	186.00 (Maximum)		
LS2 Background CPS	Value	Nominal	SS2 Background CPS	Value	Nominal	
	32.5474	37.0000		37.3910	38.0000	
26.0000 (Minimum)	48.0000 (Maximum)		27.0000 (Minimum)	50.0000 (Maximum)		
LS3 Background CPS	Value	Nominal	SS3 Background CPS	Value	Nominal	
	19.4957	22.0000		21.8004	23.0000	
15.0000 (Minimum)	29.0000 (Maximum)		16.0000 (Minimum)	30.0000 (Maximum)		
LS4 Background CPS	Value	Nominal	SS4 Background CPS	Value	Nominal	
	26.35	30.00		30.7954	31.0000	
20.00 (Minimum)	40.00 (Maximum)		22.0000 (Minimum)	40.0000 (Maximum)		
LS1 Aluminium CPS	Value	Nominal	SS1 Aluminium CPS	Value	Nominal	
	1207.0	1210.0		6851.73	7850.00	
850.00 (Minimum)	1570.0 (Maximum)		5500.00 (Minimum)	10200.0 (Maximum)		
LS2 Aluminium CPS	Value	Nominal	SS2 Aluminium CPS	Value	Nominal	
	1107.19	1110.00		3550.46	4000.00	
780.00 (Minimum)	1440.00 (Maximum)		2800.00 (Minimum)	5200.00 (Maximum)		
LS3 Aluminium CPS	Value	Nominal	SS3 Aluminium CPS	Value	Nominal	
	979.141	1010.00		2965.76	3350.00	
710.00 (Minimum)	1300.00 (Maximum)		2350.00 (Minimum)	4360.00 (Maximum)		
LS4 Aluminium CPS	Value	Nominal	SS4 Aluminium CPS	Value	Nominal	
	695.69	760.00		2946.2859	3230.0000	
530.00 (Minimum)	990.00 (Maximum)		2260.0000 (Minimum)	4200.0000 (Maximum)		
LS1 Al + Sleeve CPS	Value	Nominal	SS1 Al + Sleeve CPS	Value	Nominal	
	992.22	970.00		5602.64	6160.00	
680.00 (Minimum)	1260.0 (Maximum)		4300.00 (Minimum)	8000.00 (Maximum)		
LS2 Al + Sleeve CPS	Value	Nominal	SS2 Al + Sleeve CPS	Value	Nominal	
	841.974	830.000		2789.54	3050.00	
580.000 (Minimum)	1080.00 (Maximum)		2130.00 (Minimum)	4000.00 (Maximum)		
LS3 Al + Sleeve CPS	Value	Nominal	SS3 Al + Sleeve CPS	Value	Nominal	
	623.984	650.000		1995.32	2190.00	
460.000 (Minimum)	850.000 (Maximum)		1533.00 (Minimum)	2850.00 (Maximum)		
LS4 Al + Sleeve CPS	Value	Nominal	SS4 Al + Sleeve CPS	Value	Nominal	

300.00 (Minimum)	(Nominal)	550.00 (Maximum)	383.52	420.00	1190.00 (Minimum)	(Nominal)	2200.00 (Maximum)	1631.44	1700.00
LS1 Magnesium CPS			Value	Nominal	SS1 Magnesium CPS			Value	Nominal
			8004.02	8100.00				11074.8	12740.0
5670.00 (Minimum)	(Nominal)	10530.0 (Maximum)			8920.00 (Minimum)	(Nominal)	16560.0 (Maximum)		
LS2 Magnesium CPS			Value	Nominal	SS2 Magnesium CPS			Value	Nominal
			7584.31	7650.00				5908.42	6670.00
5360.00 (Minimum)	(Nominal)	9950.00 (Maximum)			4670.00 (Minimum)	(Nominal)	8670.00 (Maximum)		
LS3 Magnesium CPS			Value	Nominal	SS3 Magnesium CPS			Value	Nominal
			6571.56	6800.00				4799.28	5400.00
4760.00 (Minimum)	(Nominal)	8840.00 (Maximum)			3780.00 (Minimum)	(Nominal)	7020.00 (Maximum)		
LS4 Magnesium CPS			Value	Nominal	SS4 Magnesium CPS			Value	Nominal
			4499.06	4850.00				4791.39	5240.00
3400.00 (Minimum)	(Nominal)	6300.00 (Maximum)			3670.00 (Minimum)	(Nominal)	6810.00 (Maximum)		



Master: 20-May-2015 13:16

ThruBit String Master Calibration									
Thermal Neutron Master Calibration									
TNF, Background CPS			Value	Nominal	TNN, Background CPS		Value	Nominal	
			0	1.0			0.017	1.0	
0 (Minimum)	(Nominal)	2.0 (Maximum)			0 (Minimum)	(Nominal)	2.0 (Maximum)		
TNF, Tank CPS			Value	Nominal	TNN, Tank CPS			Value	Nominal
			54.48	96.00				1626.4	2860.0
25.00 (Minimum)	(Nominal)	200.0 (Maximum)			750.00 (Minimum)	(Nominal)	5700.0 (Maximum)		
TNF, Tank + Al Sleeve CPS			Value	Nominal	TNN, Tank + Al Sleeve CPS			Value	Nominal
			1710.2	3040.0				17691.4	32350.0
727.00 (Minimum)	(Nominal)	6080.0 (Maximum)			8000.00 (Minimum)	(Nominal)	64700.0 (Maximum)		
Tank + Al Sleeve Ratio			Value	Nominal	Tank + Al Sleeve Porosity PU			Value	Nominal
			10.727	10.797				14.46	14.40
10.300 (Minimum)	(Nominal)	11.300 (Maximum)			13.40 (Minimum)	(Nominal)	15.40 (Maximum)		
Tank, Ratio			Value	Nominal	Tank, Temperature DEGF			Value	Nominal
			29.853	30.958				73.5	70.0
28.000 (Minimum)	(Nominal)	34.000 (Maximum)			20.0 (Minimum)	(Nominal)	120 (Maximum)		

Master: 19-May-2015 11:21

ThruBit String Master Calibration									
TMG Accelerometer Calibration									
Minimum Ax, m/s2			Value	Nominal	Maximum Ax, m/s2		Value	Nominal	
			N/A	-9.810			N/A	9.810	
-10.81 (Minimum)	(Nominal)	-8.810 (Maximum)			8.810 (Minimum)	(Nominal)	10.81 (Maximum)		
Minimum Ay, m/s2			Value	Nominal	Maximum Ay, m/s2			Value	Nominal
			N/A	-9.810				N/A	9.810
-10.81 (Minimum)	(Nominal)	-8.810 (Maximum)			8.810 (Minimum)	(Nominal)	10.81 (Maximum)		
Minimum Az, m/s2			Value	Nominal	Maximum Az, m/s2			Value	Nominal
			N/A	0				N/A	9.810
-1.000 (Minimum)	(Nominal)	1.000 (Maximum)			8.810 (Minimum)	(Nominal)	10.81 (Maximum)		
RB Offset, degrees			Value	Nominal					
			-17.00	0					
-360.0 (Minimum)	(Nominal)	360.0 (Maximum)							

Master: Calibration not done

ThruBit String Master Calibration						
TMG Gamma-Ray Calibration						
GR Background GAPI		Value	Nominal	GR Jig-Background GAPI		Nominal
		28.42	30.00			143.3
0		120.0		114.6		172.0
(Minimum)	(Nominal)	(Maximum)		(Minimum)	(Nominal)	(Maximum)
Master: 20-Apr-2015 15:25						

Company: **SANDRIDGE ENERGY**

Schlumberger

Well: **BASCOM FARMS 3408 1-4H33**

Field: **WHARTON**

County: **HARPER**

State: **KANSAS**

BOREHOLE PROFILE
 GAMMA RAY
 MEMORY LOG