



MIDWEST SURVEYS
 LOGGING - PERFORATING - CONSULTING SERVICES
 P.O. Box 68, Osawatomie, KS 66064
 913 / 755 - 2128

GAMMA RAY / NEUTRON / CCL

API# 15-059-27,008

File No.

Company **Haas Petroleum, LLC.**
 Well **Coughenour No. 5-HP**
 Field **Paola / Rantoul**
 County **Franklin** State **Kansas**

Location **1570' FSL & 1385' FWL
 SE-SW-NE-SW**
 Sec. 3 Twp. 16s Rge. 21e
 Permanent Datum **GL** Elevation **1000'**
 Log Measured From **GL**
 Drilling Measured From **GL**
 Other Services **Perforate**
 Elevation **KB, NA
 D.F. NA
 G.L. 1000'**

Date	09-01-2015						
Run Number	One						
Depth Driller	760.0						
Depth Logger	754.0						
Bottom Logged Interval	753.0						
Top Log Interval	20.0						
Fluid Level	Full						
Type Fluid	Water						
Density / Viscosity	NA						
Salinity - PPM Cl	NA						
Max Recorded Temp	NA						
Estimated Cement Top	0.0						
Equipment No.	102	Osawatomie					
Recorded By	Gary Windisch						
Witnessed By	John Haas						
RUN	BORE-HOLE RECORD						
	CASING RECORD						
No.	BIT	FROM	TO	SIZE	WGT.	FROM	TO
One	9.875"	0.0	20.0	7.00"	17.0 #	0.0	20.0
Two	5.625"	20.0	760.0	2.875"	6.5 #	0.0	755.0

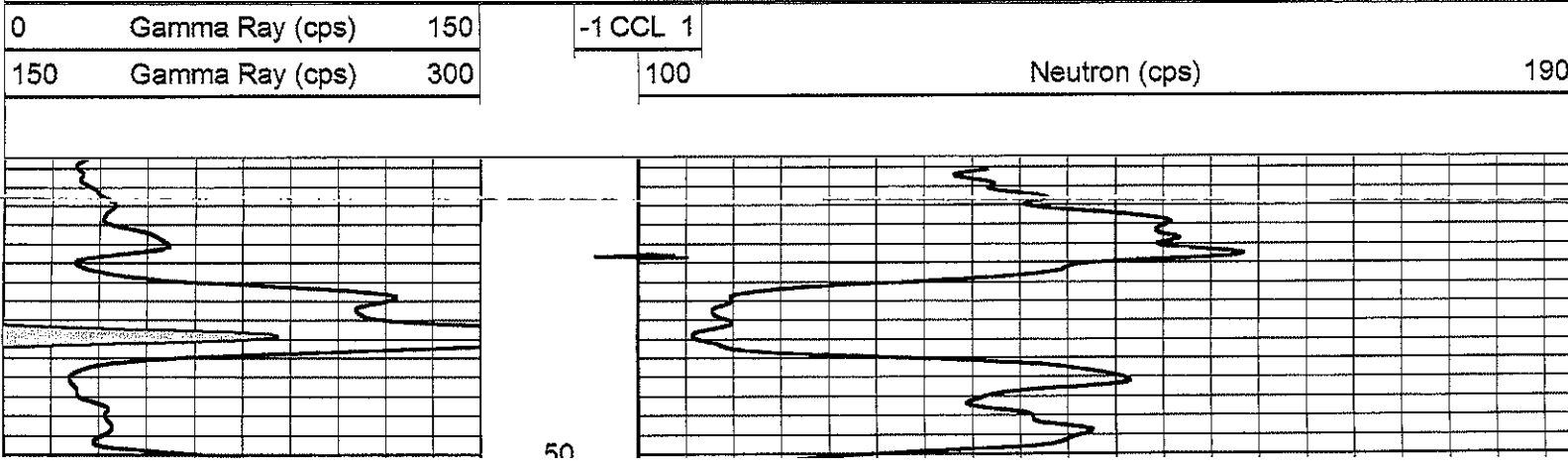
<<< Fluid Here >>>

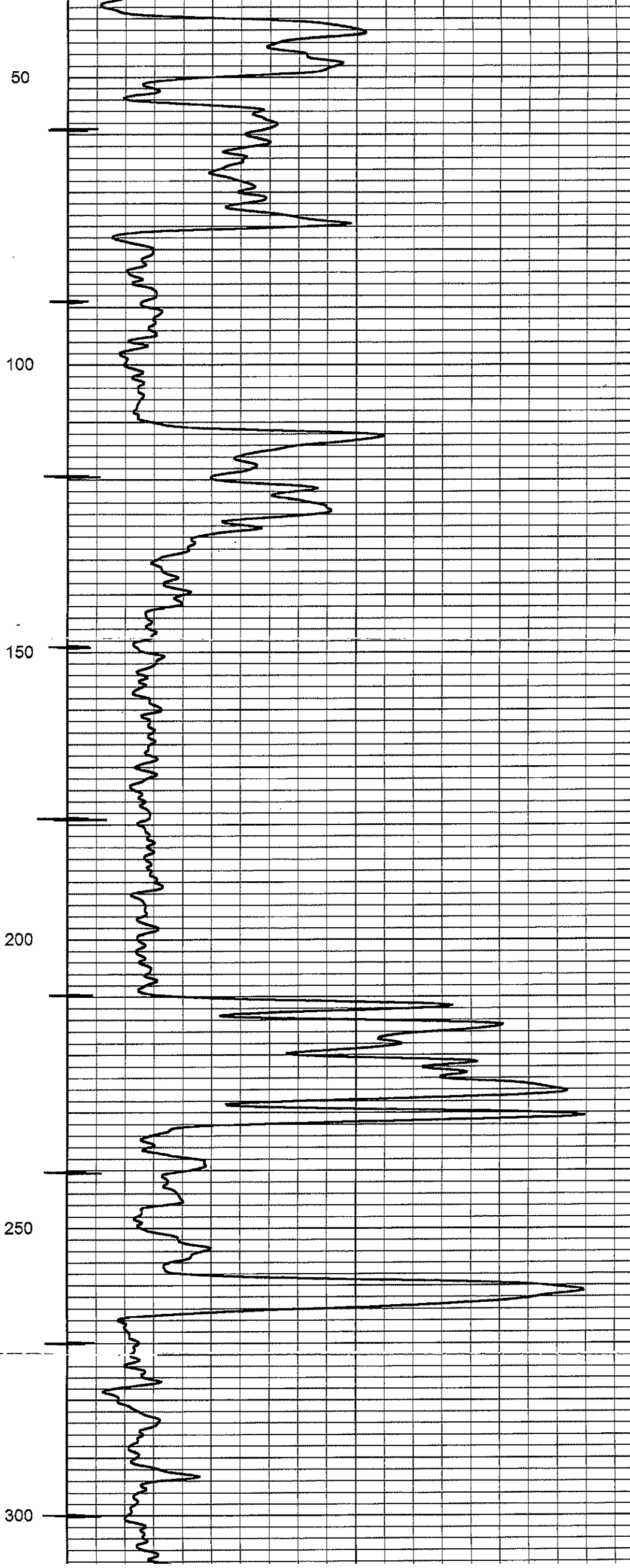
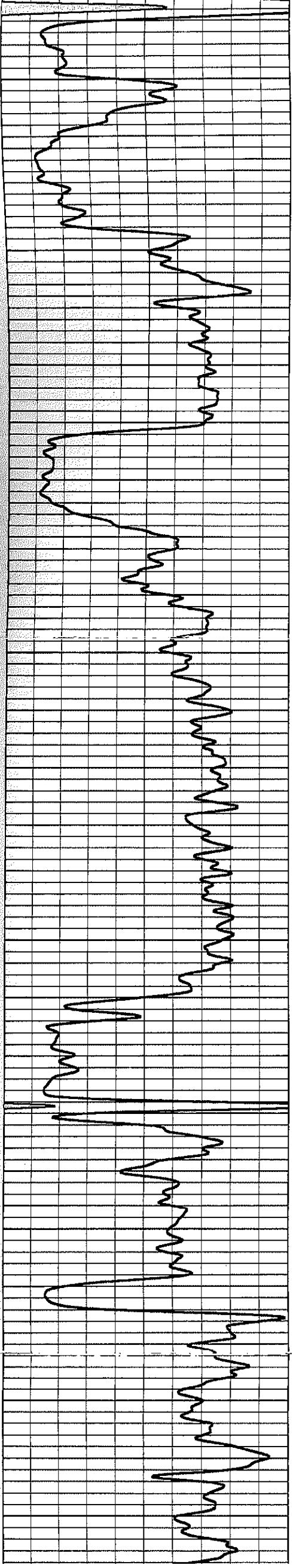
All interpretations are opinions based on inferences from electrical or other measurements and we cannot and do not guarantee the accuracy or correctness of any interpretation, and we shall not, except in the case of gross or willful negligence on our part, be liable or responsible for any loss, costs, damages, or expenses incurred or sustained by anyone resulting from any interpretation made by any of our officers, agents or employees. These interpretations are also subject to our general terms and conditions set out in our current Price Schedule.

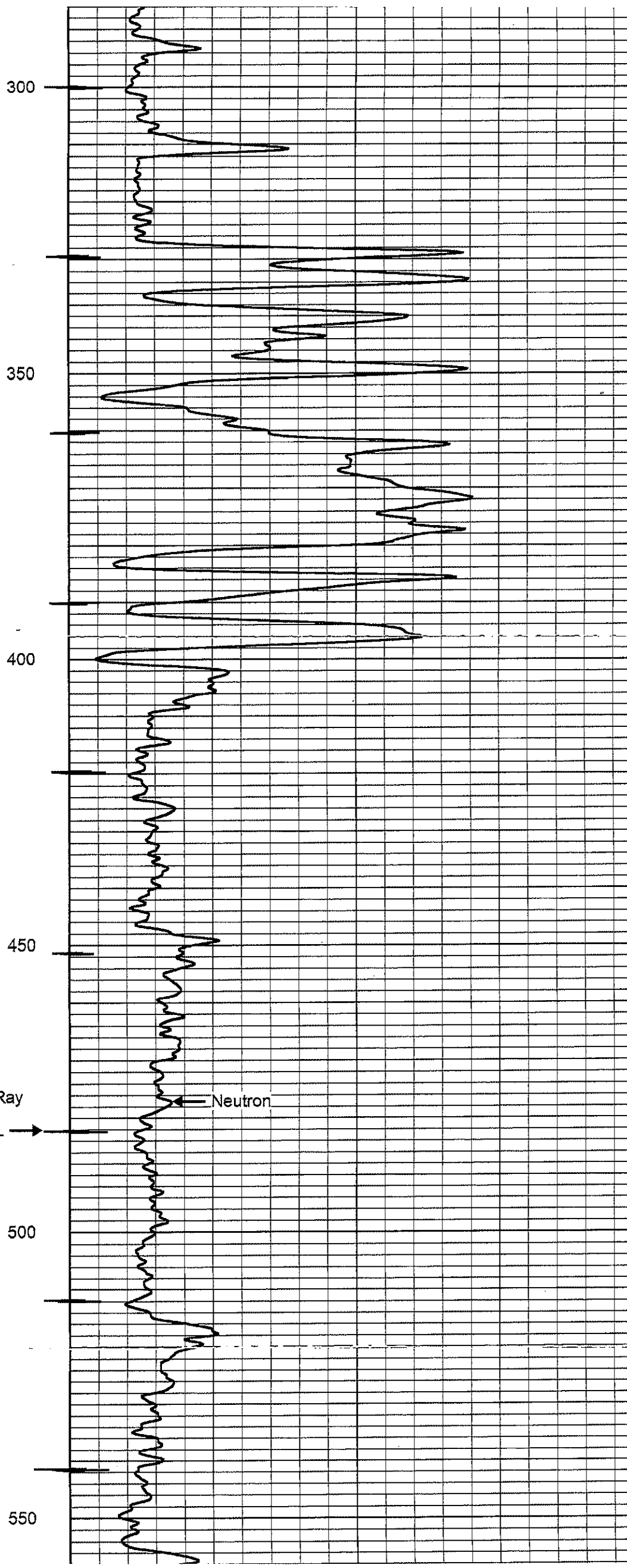
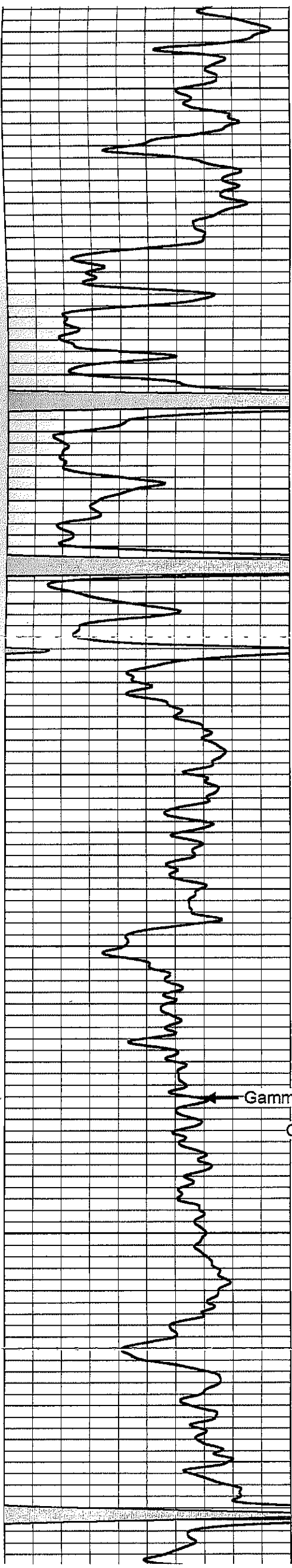
Comments

Drilling Contractor :
 Skyy Drilling, LLC.
 Rig #6

Database File: coughenour 5hp.db
 Dataset Pathname: pass1
 Presentation Format: gr-n-ccl
 Dataset Creation: Tue Sep 01 09:16:24 2015 by Log SCH 111116
 Charted by: Depth in Feet scaled 1:240



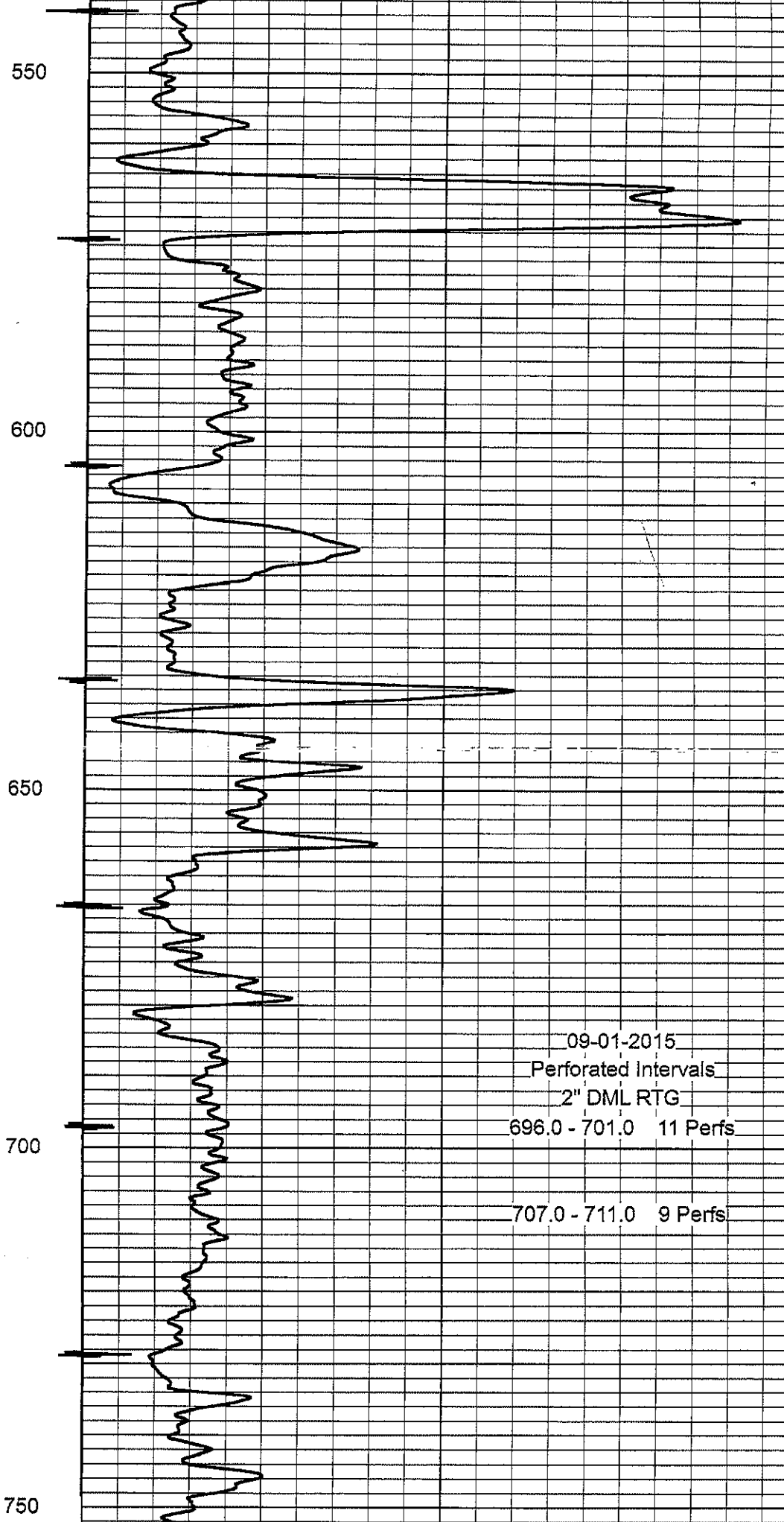
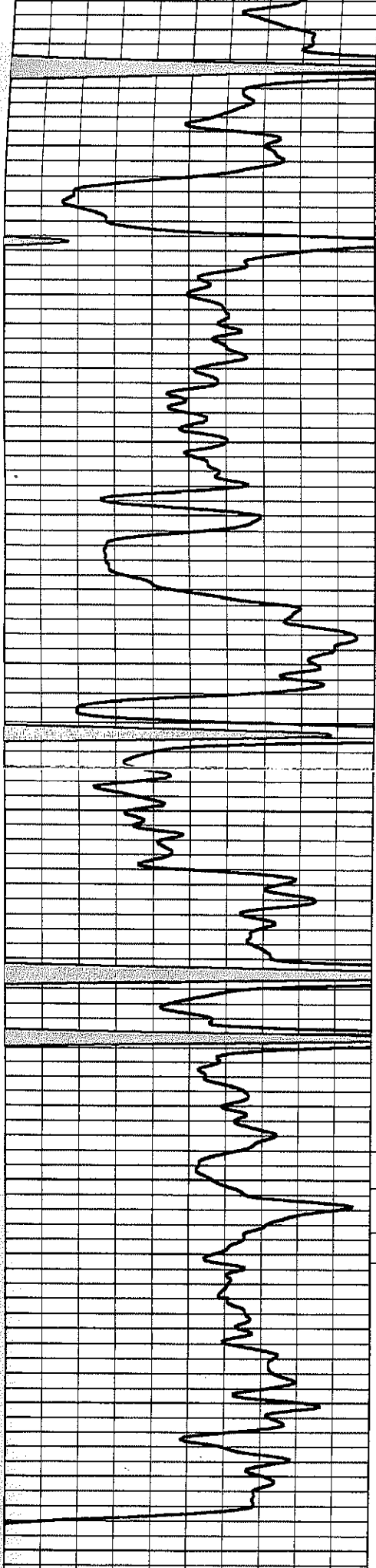




Gamma Ray

Neutron

CCL →



09-01-2015
 Perforated Intervals
 2" DML RTG
 696.0 - 701.0 11 Perfs
 707.0 - 711.0 9 Perfs

0 Gamma Ray (cps) 150
 150 Gamma Ray (cps) 300

-1 CCL 1
 100

Neutron (cps) 190