

MIDWEST SURVEYS
 LOGGING - PERFORATING - CONSULTING SERVICES
 P.O. Box 68, Osawatomie, KS 66064
 913 / 755 - 2128

GAMMA RAY / NEUTRON / CCL

File No.

API# 15-059-27,006

Company **Haas Petroleum, LLC.**

Well **Coughenour No. 3-HP**

Field **Paola / Rantoul**

County **Franklin** State **Kansas**

Location

**1900' FSL & 1715' FWL
 NW-SE-NE-SW**

Other Services
Perforate

Sec. 3 Twp. 16S Rge. 21E

Permanent Datum **GL** Elevation **1004'**

Log Measured From **GL**

Drilling Measured From **GL**

Elevation

K.B. NA
 D.F. NA
 G.L. 1004'

Date **09-01-2015**

Run Number **One**

Depth Driller **740.0**

Depth Logger **729.5**

Bottom Logged Interval **728.5**

Top Log Interval **20.0**

Fluid Level **Full**

Type Fluid **Water**

Density / Viscosity **NA**

Salinity - PPM Cl **NA**

Max Recorded Temp **NA**

Estimated Cement Top **0.0**

Equipment No. **102** Location **Osawatomie**

Recorded By **Gary Windisch**

Witnessed By **John Haas**

RUN

BORE-HOLE RECORD

CASING RECORD

No.	BIT		SIZE	WGT.	FROM		TO
	FROM	TO			FROM	TO	
One	9.875"	0.0	7.00"	17.0 #	0.0	0.0	20.0
Two	5.625"	20.0	2.875"	6.5 #	0.0	0.0	730.0

<<< Fold Here >>>

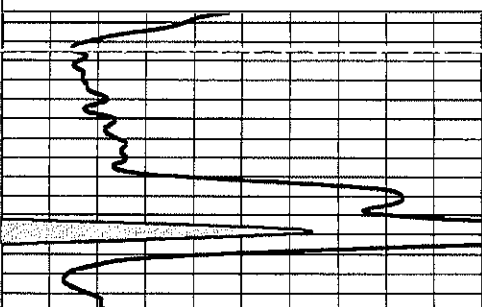
All interpretations are opinions based on inferences from electrical or other measurements and we cannot and do not guarantee the accuracy or correctness of any interpretation, and we shall not, except in the case of gross or willful negligence on our part, be liable or responsible for any loss, costs, damages, or expenses incurred or sustained by anyone resulting from any interpretation made by any of our officers, agents or employees. These interpretations are also subject to our general terms and conditions set out in our current Price Schedule.

Comments

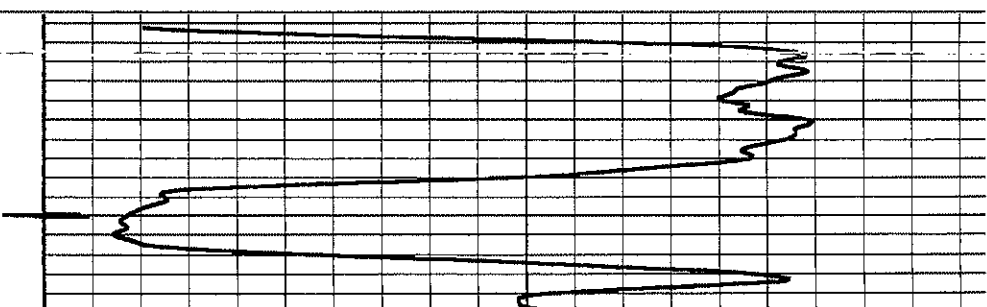
Drilling Contractor :
 Skyy Drilling, LLC.
 Rig #6

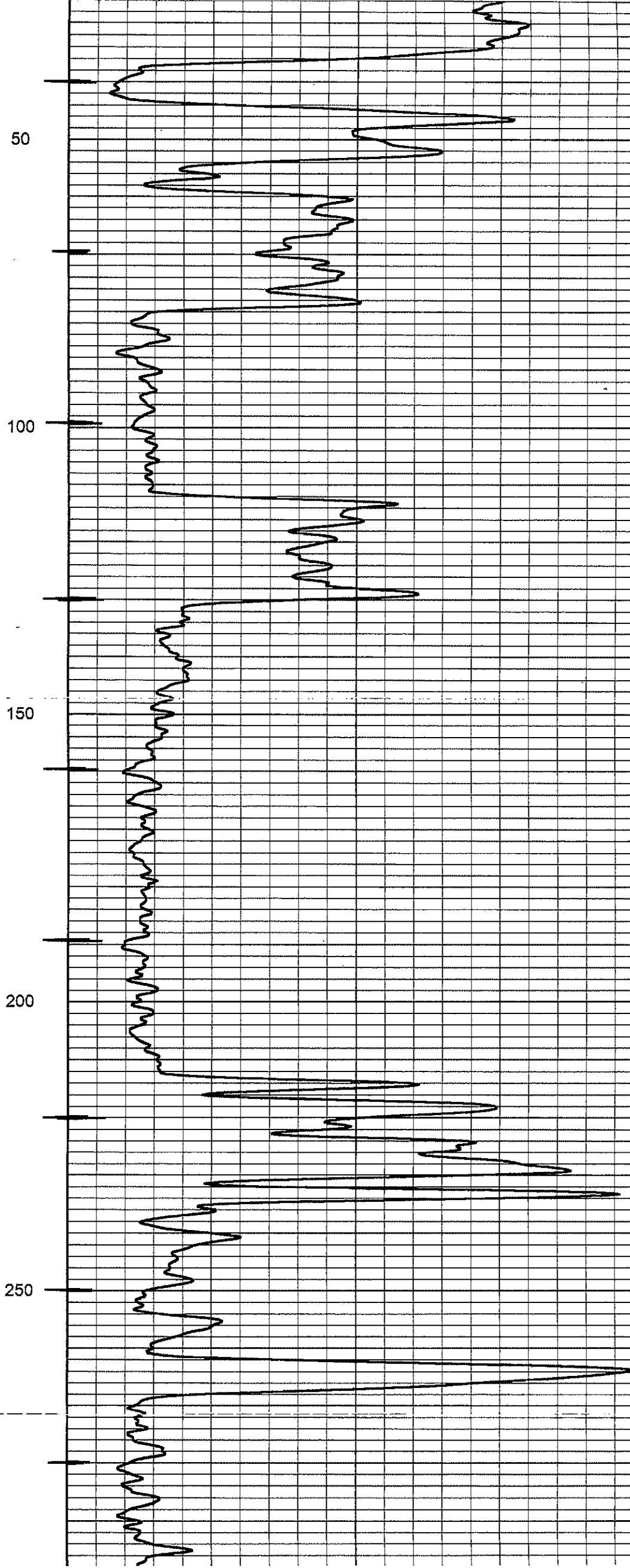
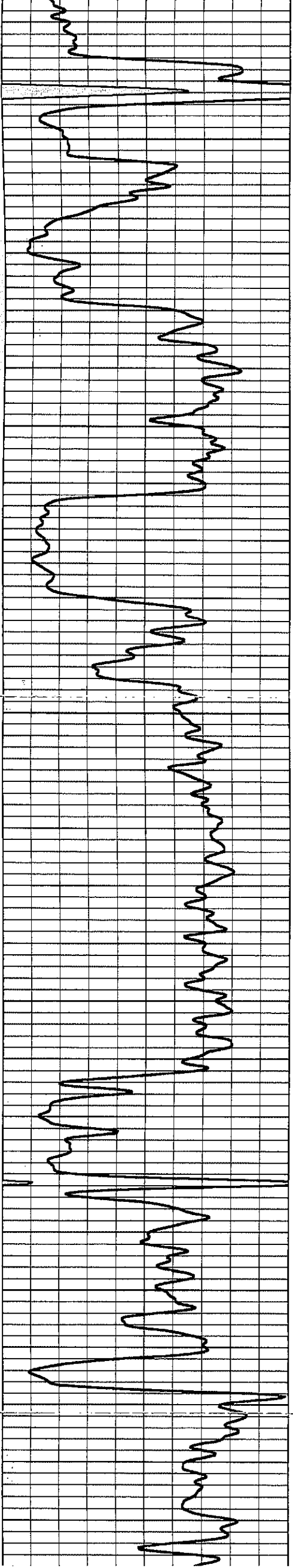
Database File: **coughenour 3hp.db**
 Dataset Pathname: **pass1**
 Presentation Format: **gr-n-ccl**
 Dataset Creation: **Tue Sep 01 09:48:43 2015 by Log SCH 111116**
 Charted by: **Depth in Feet scaled 1:240**

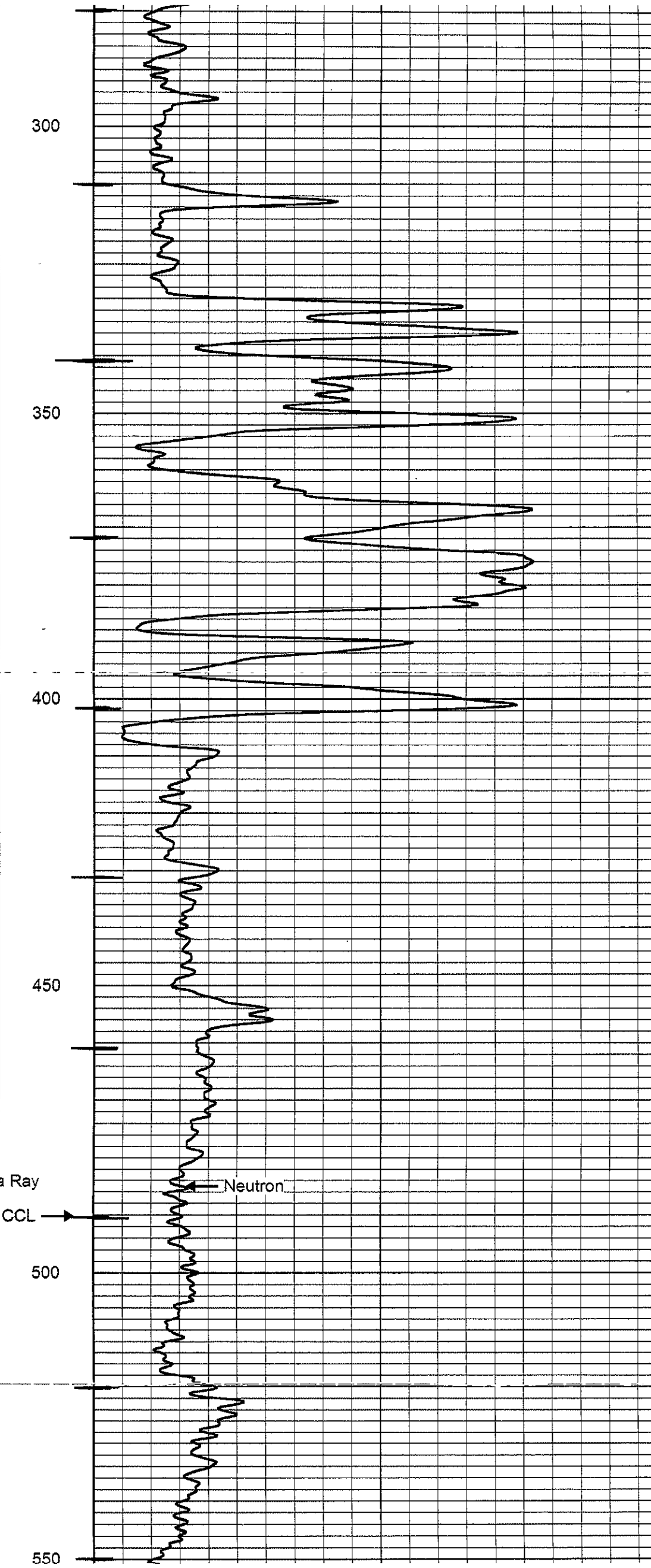
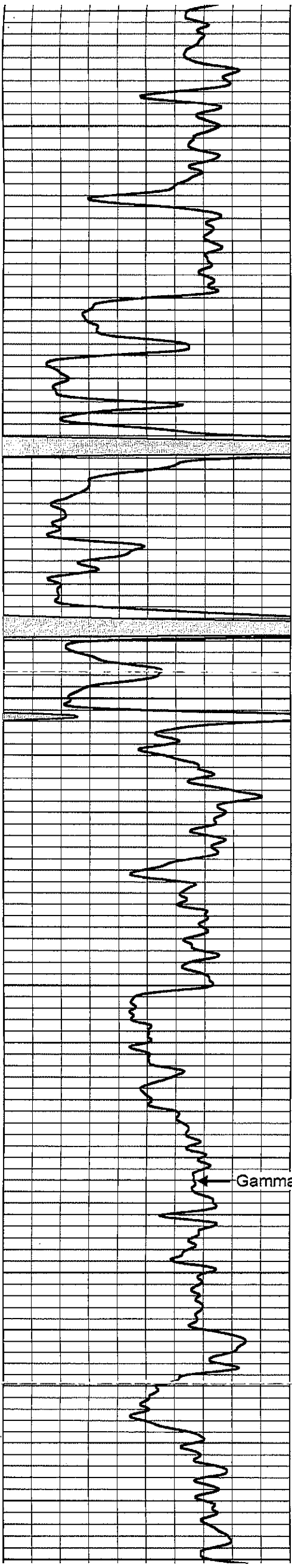
0	Gamma Ray (cps)	150	-1 CCL 1	100	Neutron (cps)	190
150	Gamma Ray (cps)	300				



50



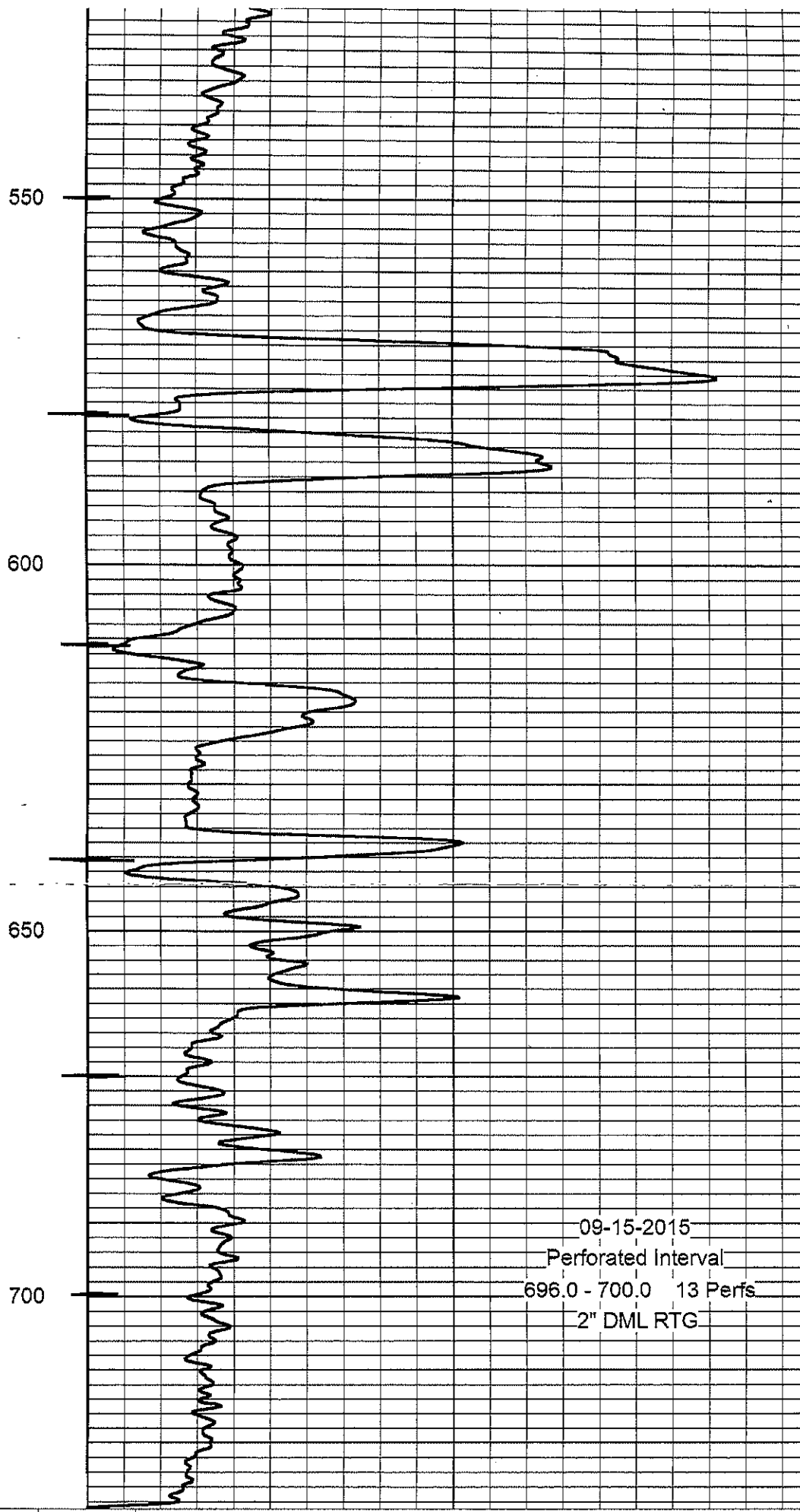
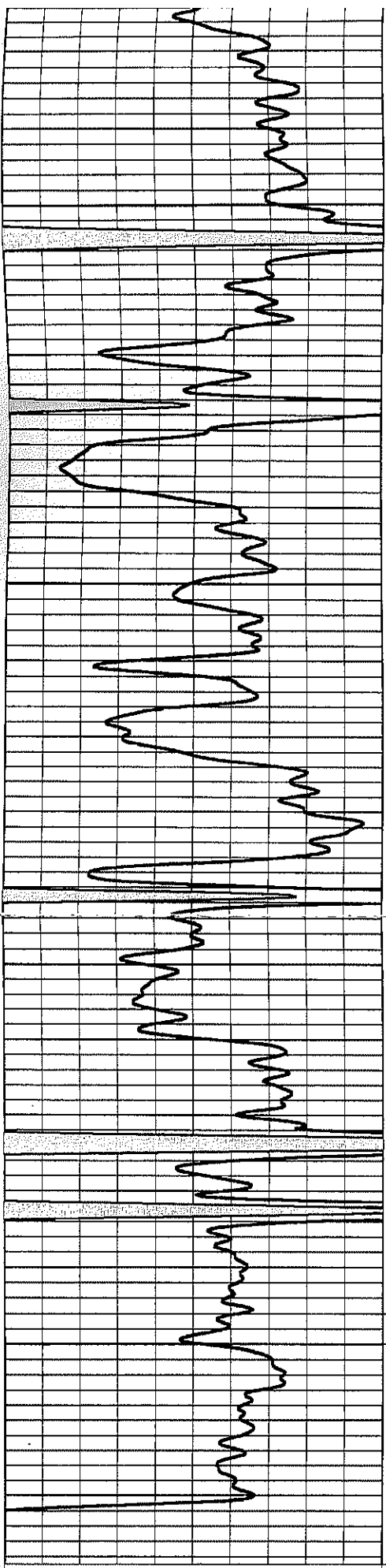




Gamma Ray

Neutron

CCL →



09-15-2015
 Perforated Interval
 696.0 - 700.0 13 Perfs
 2" DML RTG

0	Gamma Ray (cps)	150
150	Gamma Ray (cps)	300

-1 CCL 1	100
----------	-----

Neutron (cps) 190