



MIDWEST SURVEYS
 LOGGING - PERFORATING - CONSULTING SERVICES
 P.O. Box 68, Osawatomie, KS 66064
 913 / 755 - 2128

GAMMA RAY / NEUTRON / CCL

File No.

Company Bobcat Oilfield Services, Inc.

Well Harvey No. 1-6

Field LaCygne / Cadmus

County Linn State Kansas

Location 61' FSL & 996' FEL
 SW-SW-SE-SE

Sec. 5 Twp. 20S Rge. 23E

Permanent Datum GL Elevation 936'
 Log Measured From GL
 Drilling Measured From GL

Date 07-10-2017

Run Number One

Depth Driller 341.0

Depth Logger 321.2

Bottom Logged Interval 320.2

Top Log Interval 20.0

Fluid Level Full

Type Fluid Water

Density / Viscosity NA

Salinity - PPM Cl NA

Max Recorded Temp NA

Estimated Cement Top 0.0

Equipment No. Location 104 Osawatomie

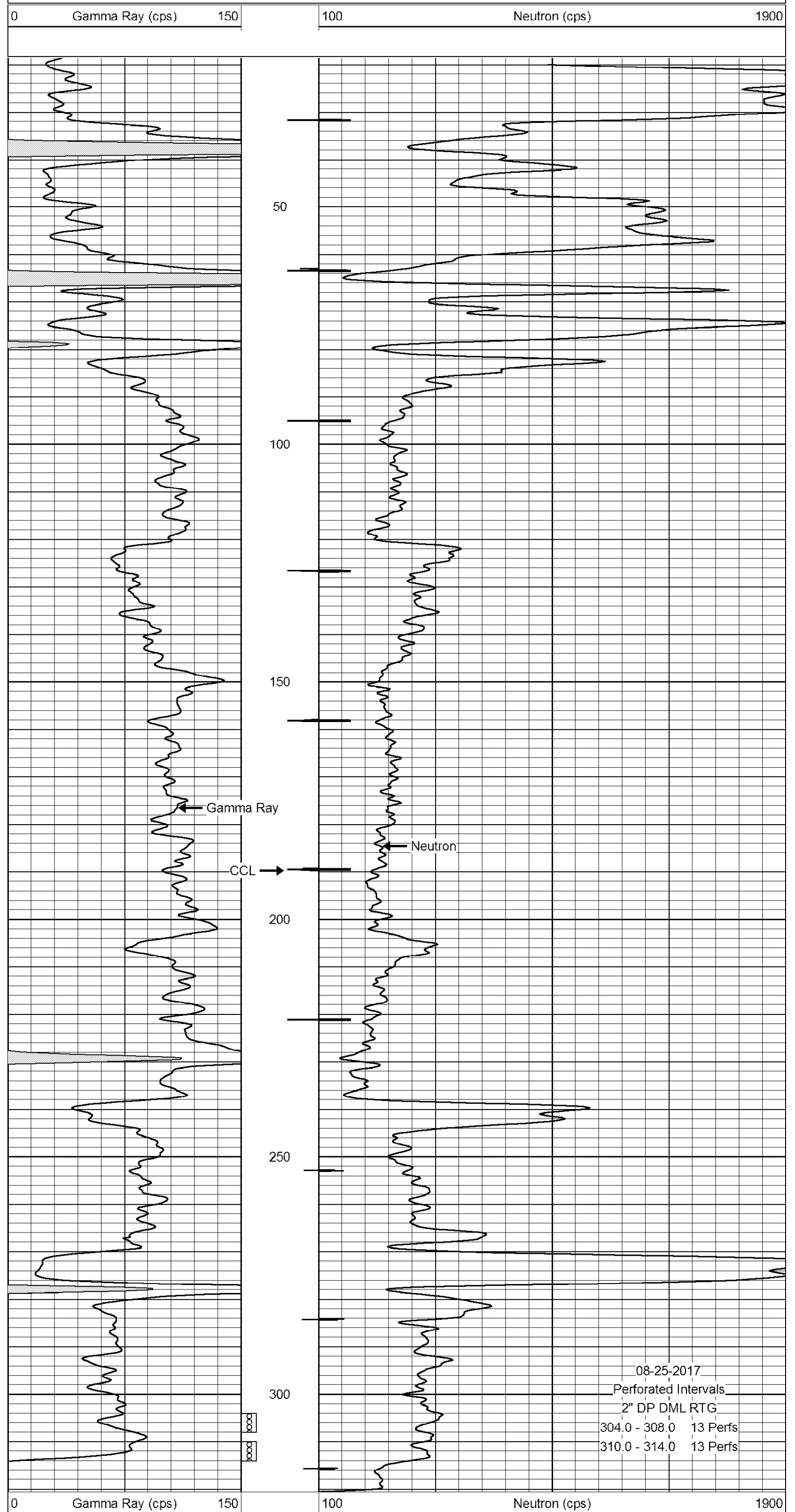
BORE-HOLE RECORD				CASING RECORD			
NO.	BIT	FROM	TO	SIZE	WGT.	FROM	TO
One	8.75"	0.0	20.0	6.00"	15.0	0.0	20.0
Two	5.625"	20.0	341.0	2.875"	6.5	0.0	335.0

<<< Fold Here >>>
 All interpretations are opinions based on inferences from electrical or other measurements and we cannot and do not guarantee the accuracy or correctness of any interpretation, and we shall not, except in the case of gross or willful negligence on our part, be liable or responsible for any loss, costs, damages, or expenses incurred or sustained by anyone resulting from any interpretation made by any of our officers, agents or employees. These interpretations are also subject to our general terms and conditions set out in our current Price Schedule.

Comments

Drilling Contractor :
 Dale Jackson Production Company

Database File: harvey 6i.db
 Dataset Pathname: pass1
 Presentation Format: gr-n-ccl
 Dataset Creation: Mon Jul 10 08:50:28 2017 by Log SCH 111116
 Charted by: Depth in Feet scaled 1:240



08-25-2017
 Perforated Intervals
 2" DP DML RTG
 304.0 - 308.0 13 Perfs
 310.0 - 314.0 13 Perfs