

MIDWEST SURVEYS
 LOGGING - PERFORATING - CONSULTING SERVICES
 P.O. Box 68, Osawatomie, KS 66064
 913 / 785 - 2128

GAMMA RAY / NEUTRON / CCL

File No.

Company **Bobcat Oilfield Services, Inc.**

Well **Snyder No. V-14B**

Field **LaCygne / Cadmus**

County **Linn** State **Kansas**

Location **5073 FSL & 703' FEL**

NE-NW-NE-NE

Sec. **8** Twp. **20S** Rge. **23E**

Permanent Datum **GL** Elevation **926'**

Log Measured From **GL**

Drilling Measured From **GL**

Other Services
Perforate

Elevation
 K.B. NA
 D.F. NA
 G.L. 926'

API# 15-107-25,200

Date

07-10-2017

Run Number

One

Depth Driller

341.0

Depth Logger

339.0

Bottom Logged Interval

338.0

Top Log Interval

20.0

Fluid Level

Full

Type Fluid

Water

Density / Viscosity

NA

Salinity - PPM Cl

NA

Max Recorded Temp

NA

Estimated Cement Top

0.0

Equipment No.

104

Location

Osawatomie

Recorded By

Gary Windisch

Witnessed By

Bob Eberhart

RUN

BORE-HOLE RECORD

CASING RECORD

No.

BIT

FROM

TO

SIZE

WGT.

FROM

TO

One

8.75"

0.0

20.0

6.00"

15.0

0.0

20.0

Two

5.825"

20.0

341.0

2.875"

6.5

0.0

339.0

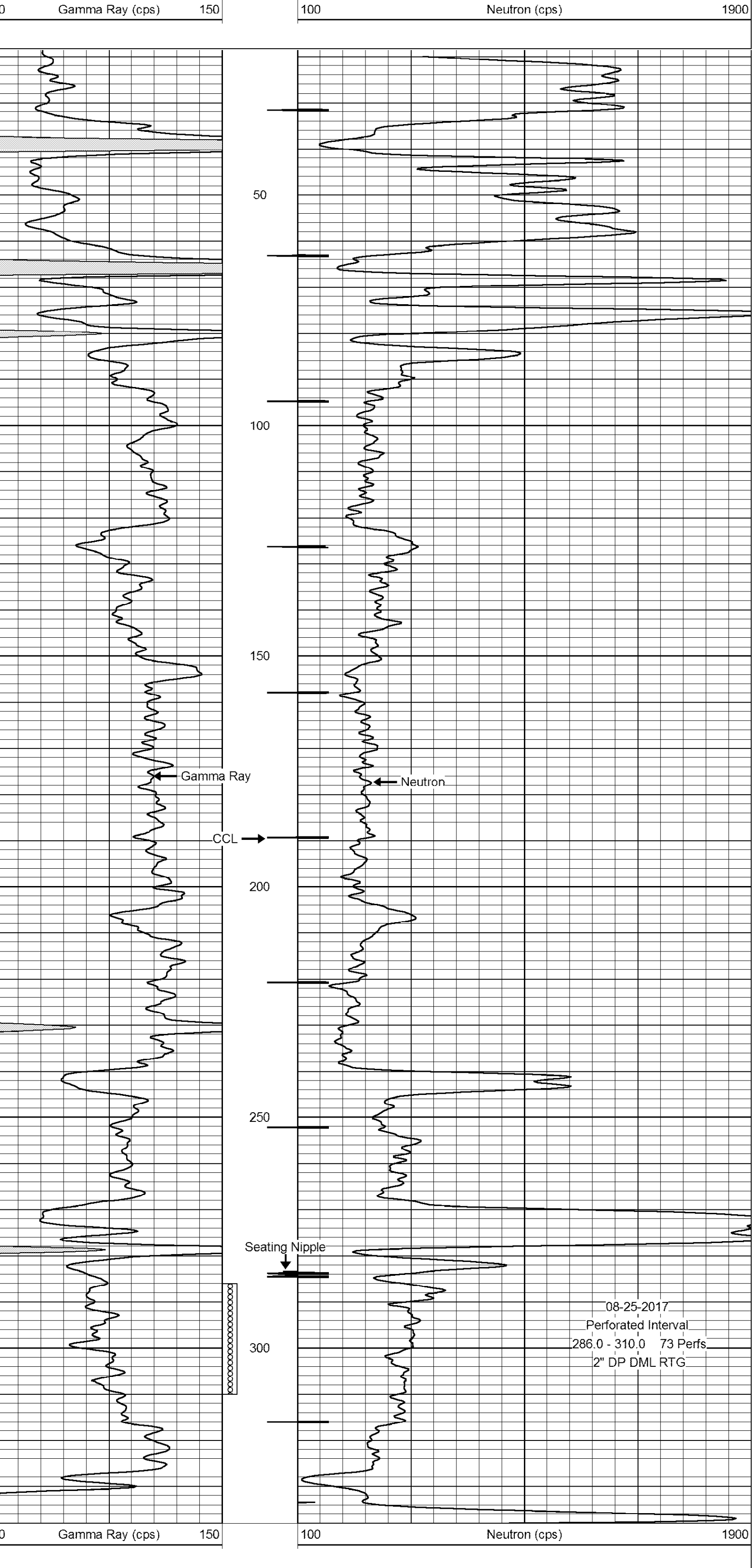
<<< Fold Here >>>

All interpretations are opinions based on inferences from electrical or other measurements and we cannot and do not guarantee the accuracy or correctness of any interpretation, and we shall not, except in the case of gross or willful negligence on our part, be liable or responsible for any loss, costs, damages, or expenses incurred or sustained by anyone resulting from any interpretation made by any of our officers, agents or employees. These interpretations are also subject to our general terms and conditions set out in our current Price Schedule.

Comments

Drilling Contractor :
 Dale Jackson Production Company

Database File: snyder 14vb.db
 Dataset Pathname: pass1
 Presentation Format: gr-n-ccl
 Dataset Creation: Mon Jul 10 10:31:18 2017 by Log SCH 111116
 Charted by: Depth in Feet scaled 1:240



08-25-2017
 Perforated Interval
 286.0 - 310.0 73 Perfs.
 2" DP DML RTG