

MIDWEST SURVEYS
 LOGGING - PERFORATING - CONSULTING SERVICES
 P.O. Box 68, Osawatomie, KS 66064
 913 / 755 - 2128

GAMMA RAY / NEUTRON / CCL

API# 15-107-25,206

File No.

Company **Bobcat Oilfield Services, Inc.**

Well **Harvey No. 1-8**

Field **LaCygne / Cadmus**

County **Linn** State **Kansas**

Location **53' FSL & 350' FEL
SW-SE-SE-SE**

Sec. **5** Twp. **20S** Rge. **23E**

Permanent Datum **GL** Elevation **927'**

Log Measured From **GL**

Drilling Measured From **GL**

Other Services
Perforate

Elevation
K.B. NA
D.F. NA
G.L. 927'

Date **07-10-2017**

Run Number **One**

Depth Driller **341.0**

Depth Logger **334.8**

Bottom Logged Interval **333.8**

Top Log Interval **20.0**

Fluid Level **Full**

Type Fluid **Water**

Density / Viscosity **NA**

Salinity - PPM Cl **NA**

Max Recorded Temp **NA**

Estimated Cement Top **0.0**

Equipment No. **104** Location **Osawatomie**

Recorded By **Gary Wondisch**

Witnessed By **Bob Eberhart**

RUN **BORE-HOLE RECORD**

NO. **BIT** **FROM** **TO** **SIZE** **WGT.** **FROM** **TO**

CASING RECORD

One **8.75"** **0.0** **20.0** **6.00"** **15.0** **0.0** **20.0**

Two **5.625"** **20.0** **341.0** **2.875"** **6.5** **0.0** **335.0**

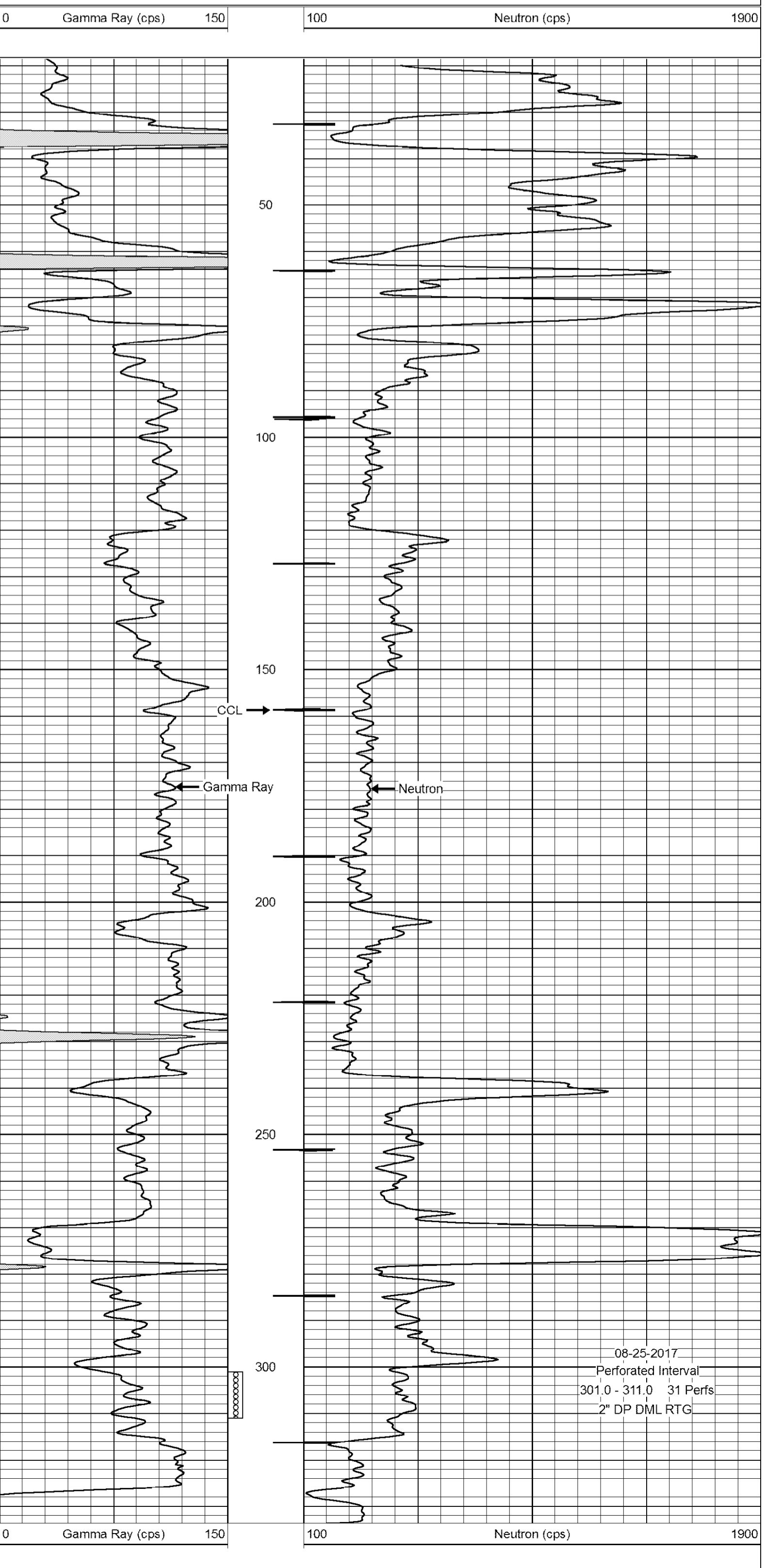
<<< Fold Here >>>

All interpretations are opinions based on inferences from electrical or other measurements and we cannot and do not guarantee the accuracy or correctness of any interpretation, and we shall not, except in the case of gross or willful negligence on our part, be liable or responsible for any loss, costs, damages, or expenses incurred or sustained by anyone resulting from any interpretation made by any of our officers, agents or employees. These interpretations are also subject to our general terms and conditions set out in our current Price Schedule.

Comments

Drilling Contractor :
Dale Jackson Production Company

Database File: harvey 8i.db
 Dataset Pathname: pass1
 Presentation Format: gr-n-ccl
 Dataset Creation: Mon Jul 10 08:11:48 2017 by Log SCH 111116
 Charted by: Depth in Feet scaled 1:240



08-25-2017
 Perforated Interval
 301.0 - 311.0 31 Perfs
 2" DP DML RTG