



MIDWEST SURVEYS
 LOGGING - PERFORATING - CONSULTING SERVICES
 P.O. Box 68, Osawatomie, KS 66064
 913.755.2128

GAMMA RAY / NEUTRON / CCL

File No.

Company **D & W Oil**

Well **Ed Daniels No. Inj-2**

Field **Humboldt / Chanute**

County **Allen** State **Kansas**

Location **1340 FSL & 990th FEL
S12-SW-NE-SE**

Other Services
Perforate

Sec. 35 Twp. 26S Rge. 18E
 Permanent Datum GL Elevation 1004'
 Log Measured From GL
 Drilling Measured From GL

Date 05-09-2017

Run Number One

Depth Driller 888.0

Bottom Logged Interval 879.0

Top Log Interval 20.0

Fluid Level Full

Type Fluid Water

Density / Viscosity NA

Salinity - PPM Cl NA

Max Recorded Temp NA

Estimated Cement Top 0.0

Equipment No. Location 104 Osawatomie

Recorded By Gary Windisch

Witnessed By David Wrestler

BORE-HOLE RECORD

NO.	BIT	FROM	TO	SIZE	WGT.	FROM	TO
One	10.00"	0.0	22.5	7.00"	17.0#	0.0	22.5
Two	5.625"	22.5	888.0	2.875"	6.5#	0.0	880.0

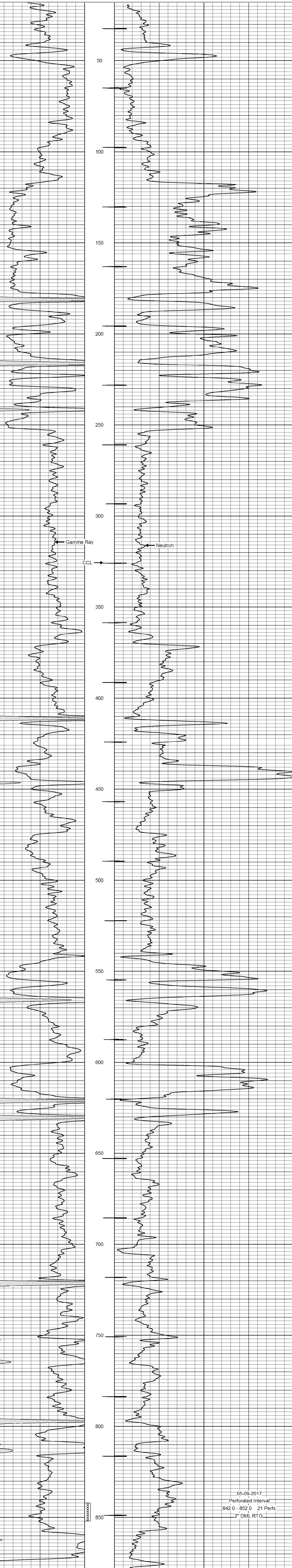
<<< Fold Here >>>

All interpretations are opinions based on inferences from electrical or other measurements and we cannot and do not guarantee the accuracy or correctness of any interpretation, and we shall not, except in the case of gross or willful negligence on our part, be liable or responsible for any loss, costs, damages, or expenses incurred or sustained by anyone resulting from any interpretation made by any of our officers, agents or employees. These interpretations are also subject to our general terms and conditions set out in our current Price Schedule.

Comments

Drilling Contractor :
David Wrestler

Database File: ed daniels 2inj.db
 Dataset Pathname: pass1
 Presentation Format: gr-n-ccl
 Dataset Creation: Tue May 09 09:36:15 2017 by Log SCH 111116
 Charted by: Depth in Feet scaled 1:240



05-09-2017
 Perforated Interval
 842.0 - 852.0 21 Perfs
 2" DML RTG