



WIRELINE  
SERVICES, INC.  
CHANUTE, KANSAS

GAMMA RAY  
NEUTRON  
COMPLETION LOG

Company LAYMON OIL II, LLC  
Well GLADES #98-17  
Field VERNON  
County WOODSON  
State KANSAS

Company LAYMON OIL II, LLC  
Well GLADES #98-17  
Field VERNON  
County WOODSON State KANSAS

Location: API # : 15-207-29440-00-00 Other Services  
SE-NE-SW-NW  
3600' FSL & 4090' FEL  
SEC 9 TWP 24S RGE 16E  
Permanent Datum G.L. Elevation 1025'EST  
Log Measured From G.L.  
Drilling Measured From G.L. Elevation K.B. D.F. G.L. 1025'EST.

Date	4-27-2017		
Run Number	1-NEWWELL		
Depth Driller			
Depth Logger	1256.5'		
Top Log Interval	SURFACE		
Bottom Logged Interval	1256.5'		
Fluid Level	WATER		
Type Fluid	FULL		
Production Casing	2 7/8" @ 1255'	@	@
Max. Recorded Temp.			
Estimated Cement Top			
Calculated Cement Top			
Amount & Type Cement			
Amount & Type Admix			
Drilling Contractor	COMPANY TOOLS		
Equipment Number	109		
Location			
Recorded By	UDEN, D.		
Witnessed By	LAYMON, M.		

<<< Fold Here >>>

All interpretations are opinions based on inferences from electrical or other measurements and we cannot and do not guarantee the accuracy or correctness of any interpretation, and we shall not, except in the case of gross or willful negligence on our part, be liable or responsible for any loss, costs, damages, or expenses incurred or sustained by anyone resulting from any interpretation made by any of our officers, agents or employees. These interpretations are also subject to our general terms and conditions set out in our current Price Schedule.

Comments

THANK YOU

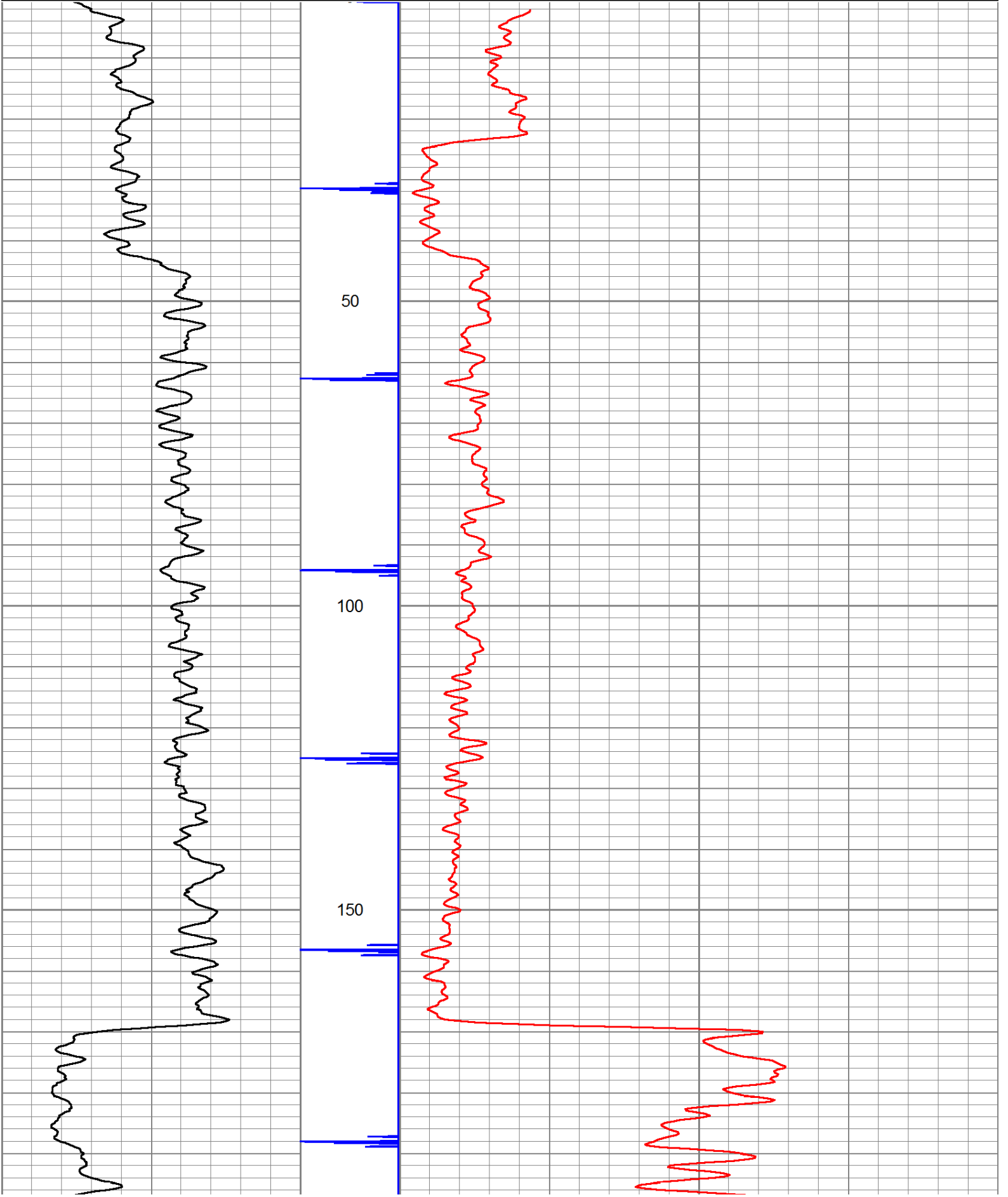
Sensor	Offset (ft)	Schematic	Description	Len (ft)	OD (in)	Wt (lb)

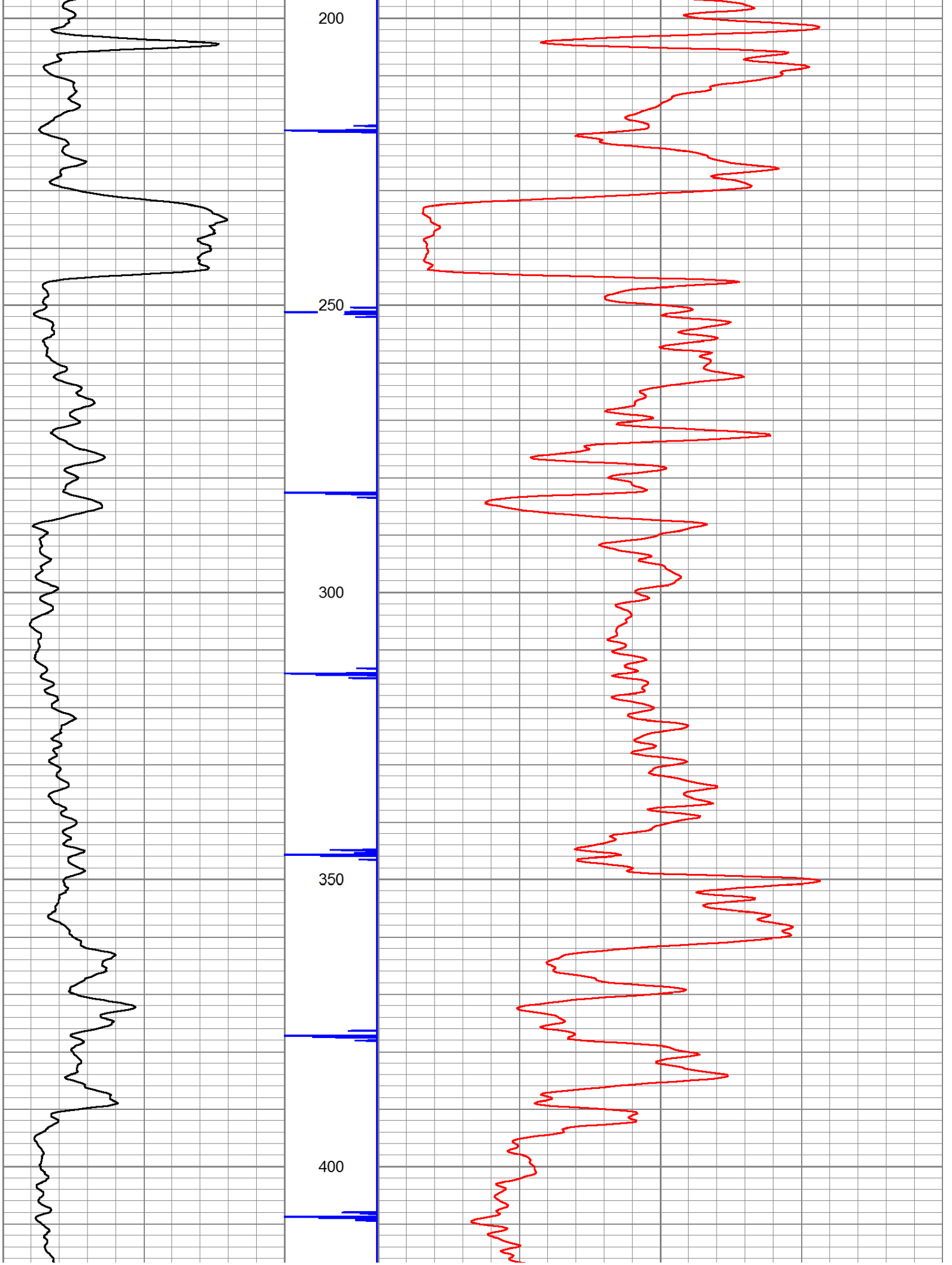
GR	7.59		GR-TITAN_169 (TIT169_001) Titan 1 11/16" Gamma Ray	4.75	1.69	20.00
CCL	5.05		CCL-TITAN_169 (TIT169) Titan 1 11/16" Logging CCL	1.83	1.69	7.50
NEU	0.63		NEU-TITAN (TIT801) TITAN 1 11/16" Neutron	4.33	1.69	25.00

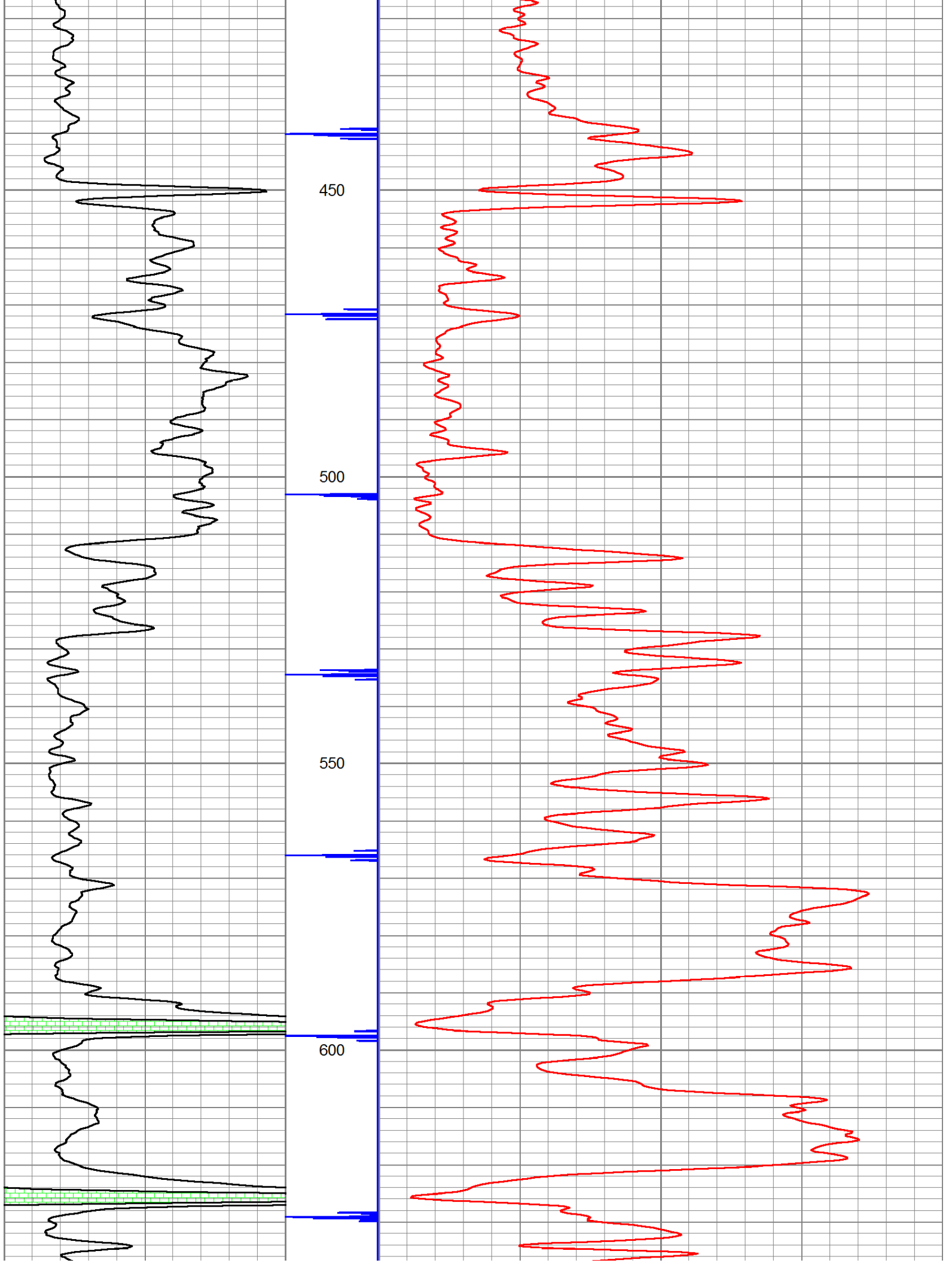
Dataset: glades #98-17.db: field/well/run1/pass1  
 Total Length: 10.92 ft  
 Total Weight: 52.50 lb  
 O.D.: 1.69 in

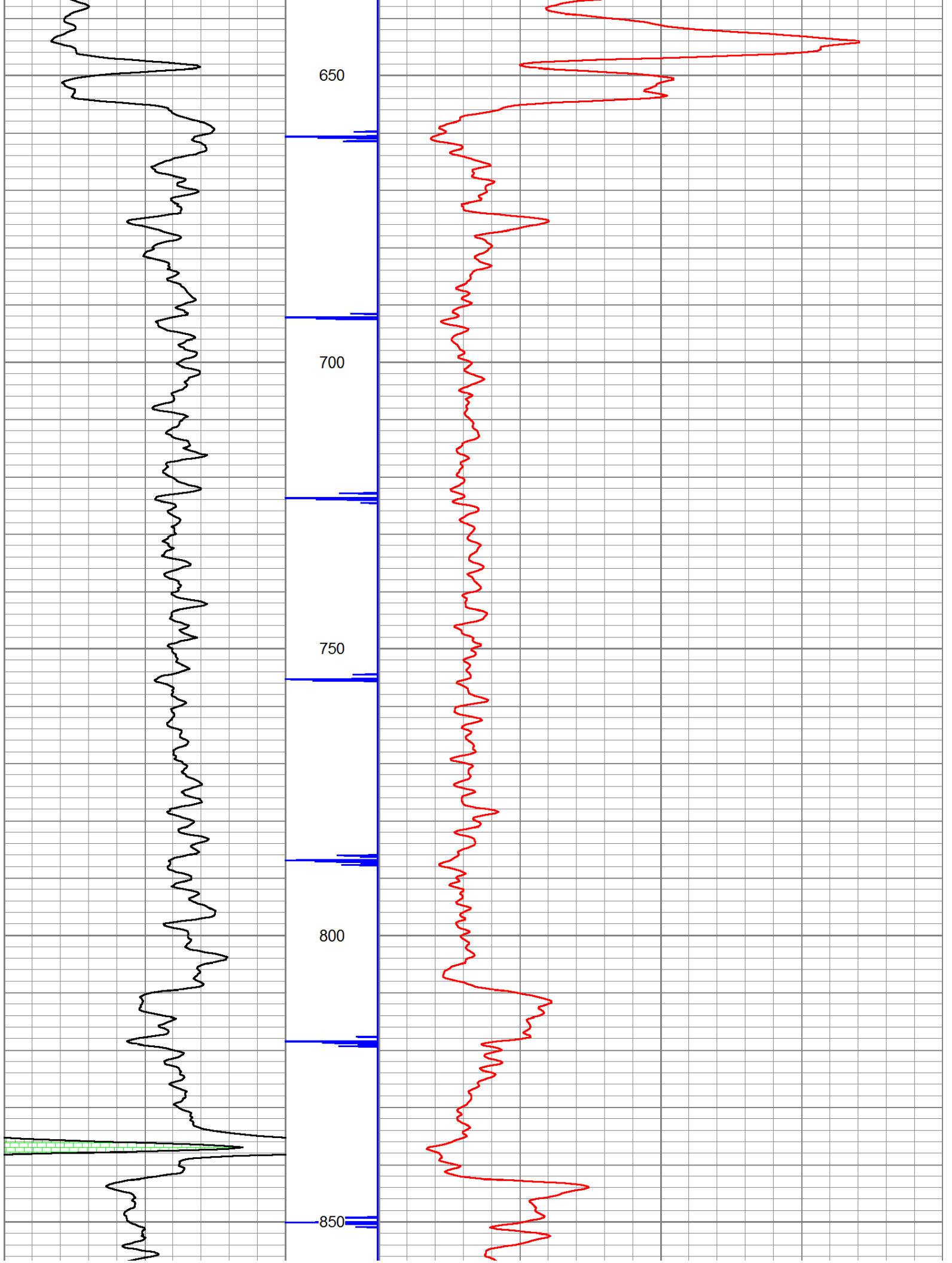
Database File: e:\glades #98-17.db  
 Dataset Pathname: pass1  
 Presentation Format: gr-n-ccl

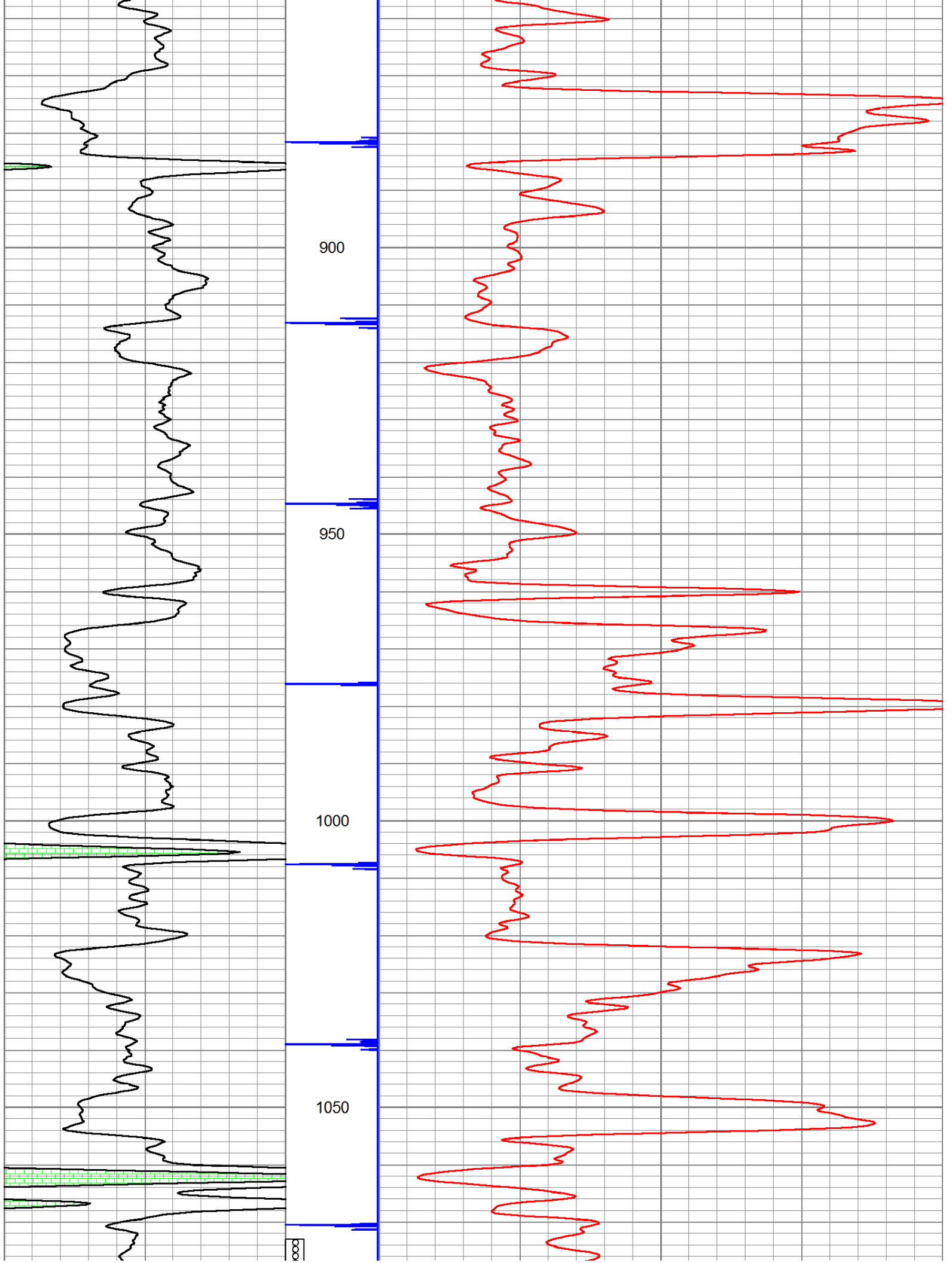
150	gr	300	3	CCLJ.05	200	NEU (cps)	1500
0	GR	150					

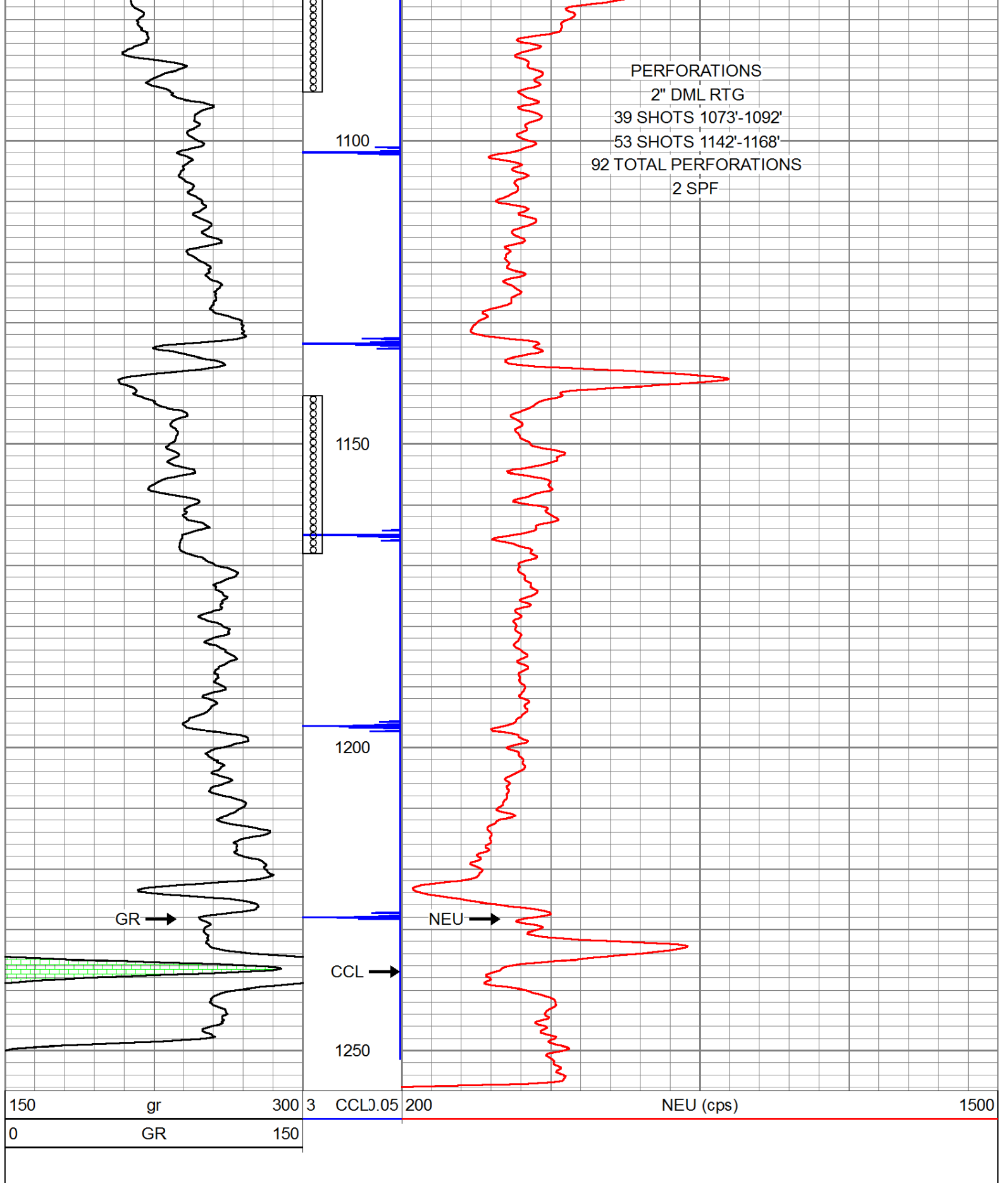












Company LAYMON OIL II, LLC  
 Well GLADES #98-17  
 Field VERNON



**WIRELINE  
SERVICES, INC.  
CHANUTE, KANSAS**

County  
State

WOODSON  
KANSAS

SEC. 9 TWP. 24S RGE. 16E  
Date 4-27-2017