



Pioneer Energy Services

Dual Induction Log

15-109-21,329-00-00

API No.

Company **Black Tea Oil, LLC**
 Well **Hibbert 'A' #3**
 Field **Bridges**
 County **Logan** State **Kansas**

Location **1855' FNL & 764' FEL**

Other Services
 CNL/CDL
 MEL/BHCS

Permanent Datum **Ground Level** Elevation **2668**
 Log Measured From **Kelly Bushing** 12 Ft. Above Perm. Datum
 Drilling Measured From **Frontkelly Bushing**

Elevation
 K.B. 2680
 D.F. G.I.L. 2668

Date	10/5/2014
Run Number	One
Depth Driller	4475
Depth Logger	4444
Bottom Logged Interval	4443
Top Log Interval	250
Casing Driller	8.625 @ 264
Casing Logger	263
Bit Size	7.875
Type Fluid in Hole	Chemical
Salinity, ppm CL	7000
Density / Viscosity	9.1 50
pH / Fluid Loss	10.5 6.4
Source of Sample	Flowline
Rm @ Meas. Temp	0.35 @ 68
Rmf @ Meas. Temp	0.26 @ 68
Rmc @ Meas. Temp	0.47 @ 68
Source of Rmf / Rmc	Charts
Rm @ BHT	0.20 @ 121
Operating Rig Time	5 Hours
Max Rec. Temp. F	121
Equipment Number	15
Location	Hays
Recorded By	D.Kerr
Witnessed By	Rich Thomasson

<<< Fold Here >>>

All interpretations are opinions based on inferences from electrical or other measurements and we cannot and do not guarantee the accuracy or correctness of any interpretation, and we shall not, except in the case of gross or willful negligence on our part, be liable or responsible for any loss, costs, damages, or expenses incurred or sustained by anyone resulting from any interpretation made by any of our officers, agents or employees. These interpretations are also subject to our general terms and conditions set out in our current Price Schedule.

Comments

Thank you for using Pioneer Energy Services
www.pioneeres.com
 785 625 3858

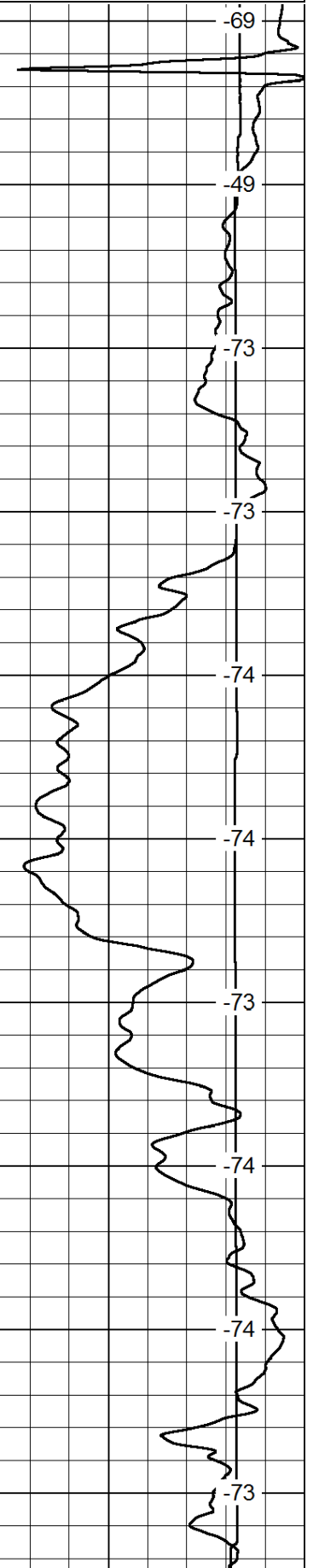
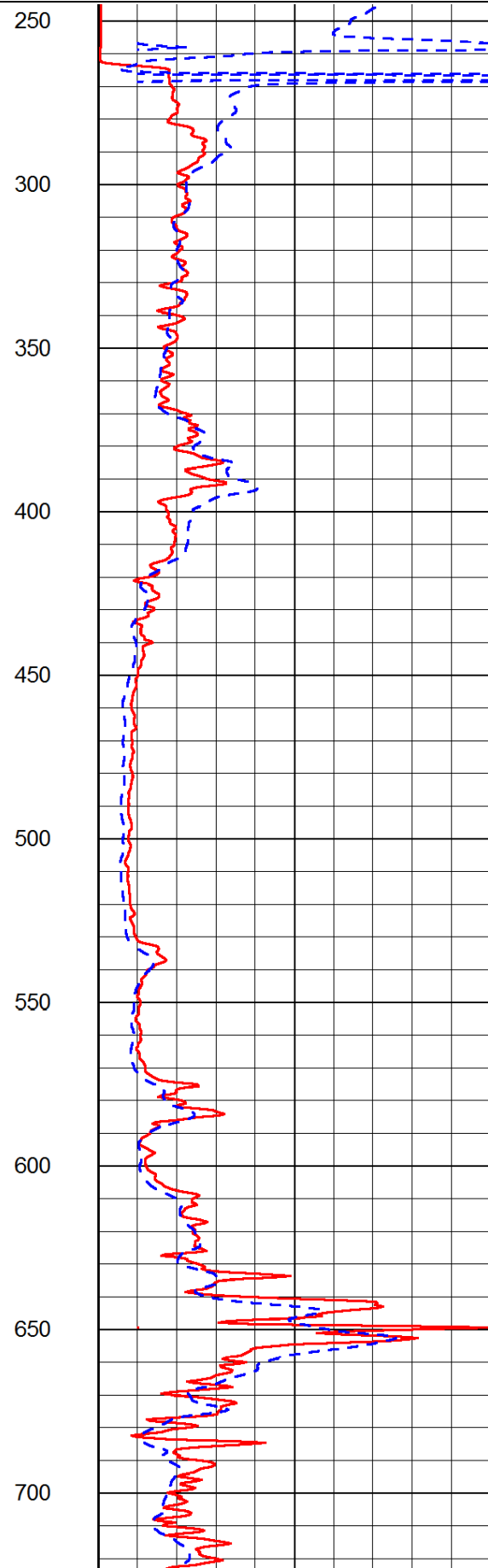
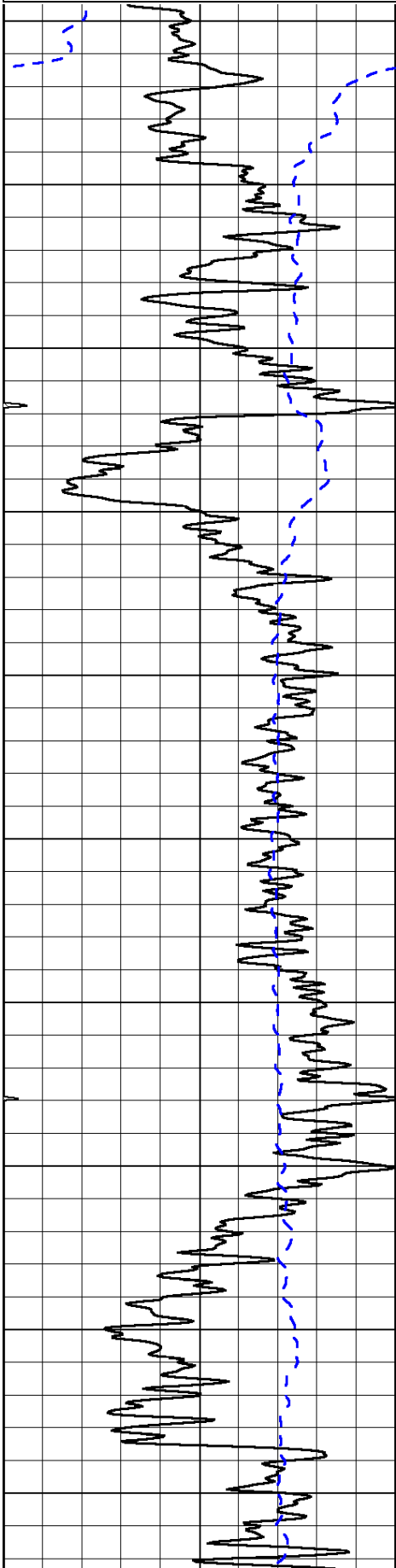
Oakley KS, 22 South, East Into

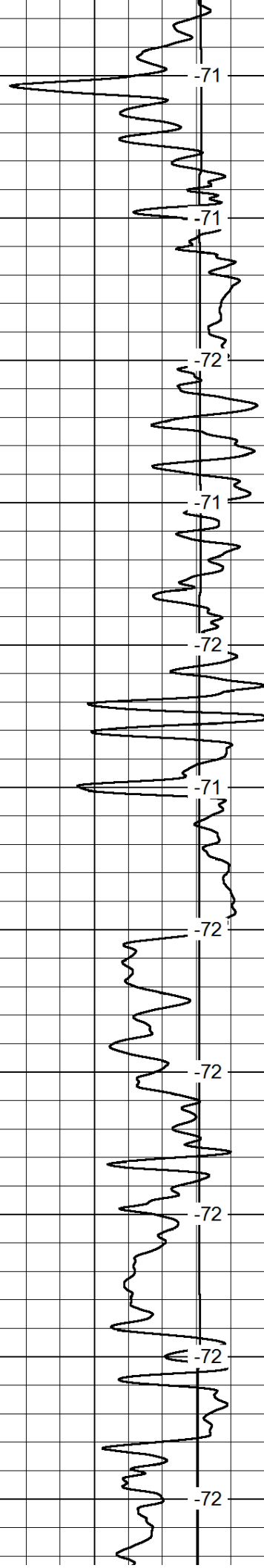
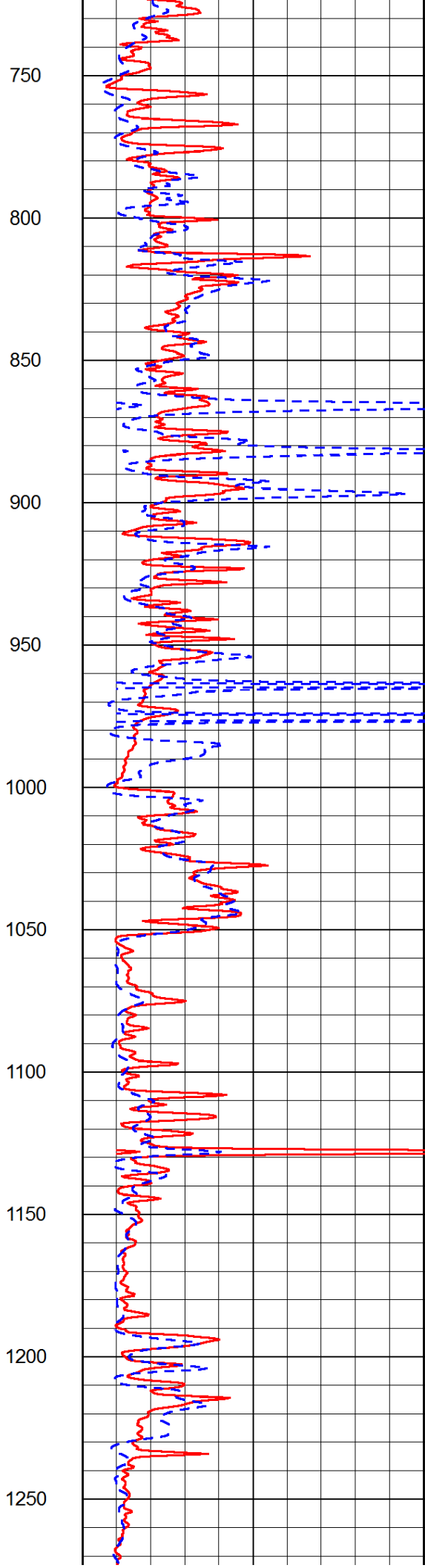
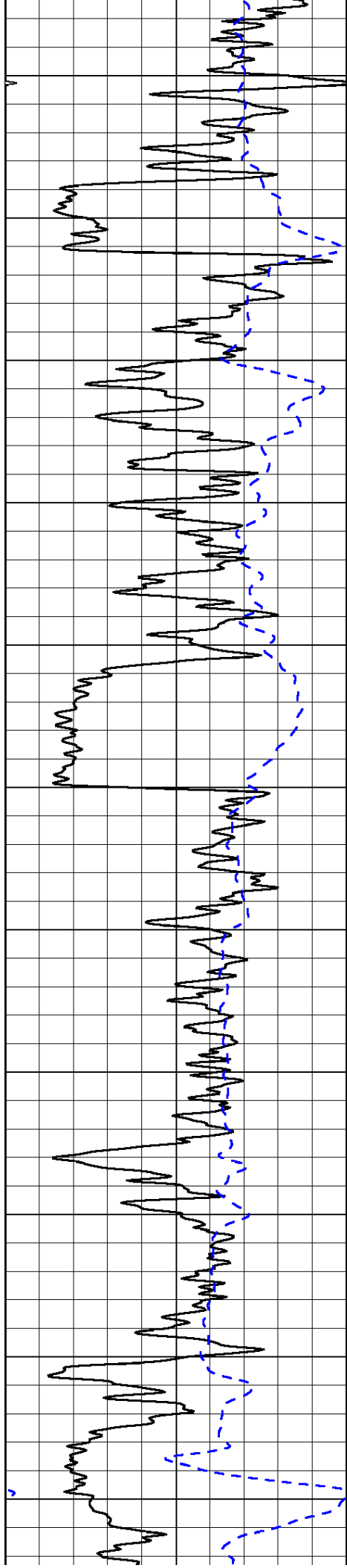
Database File: c:\warrior\data\black tea_hibbert 'a' #3\blacktea_hibbert_a_3hd.db
 Dataset Pathname: DIL/btstk
 Presentation Format: dil2in
 Dataset Creation: Sun Oct 05 08:44:24 2014
 Charted by: Depth in Feet scaled 1:600

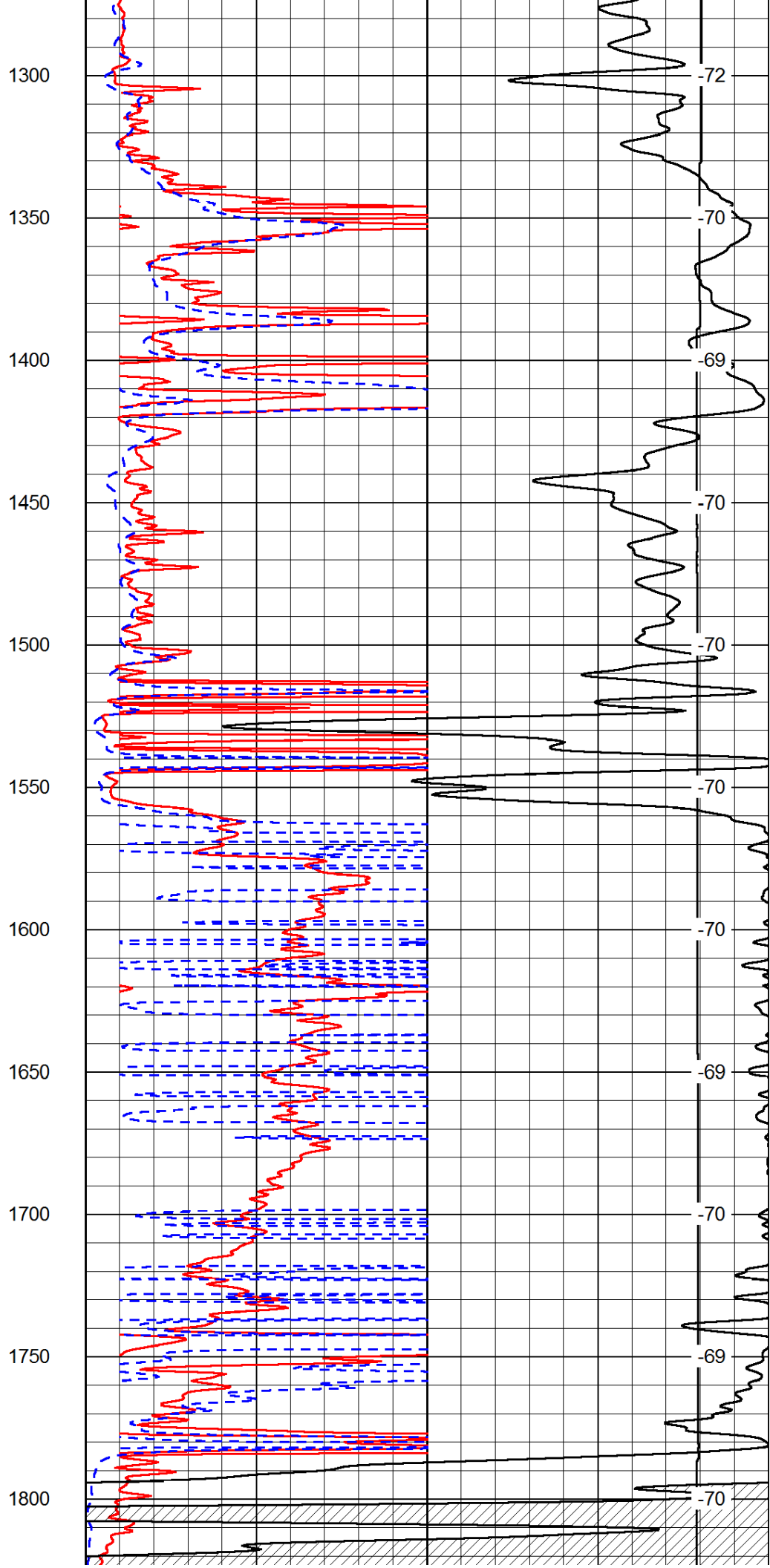
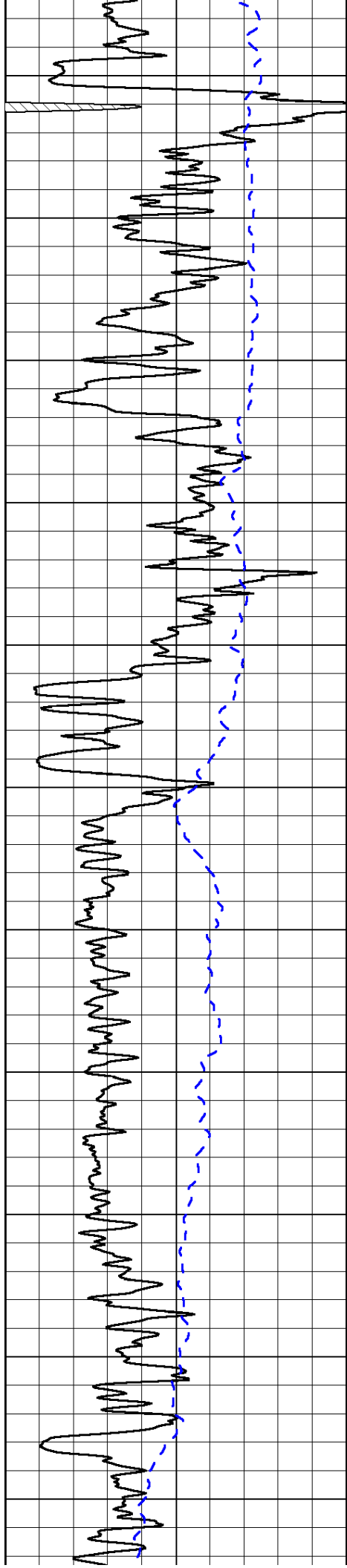
0 Gamma Ray 150
-200 SP (mV) 0

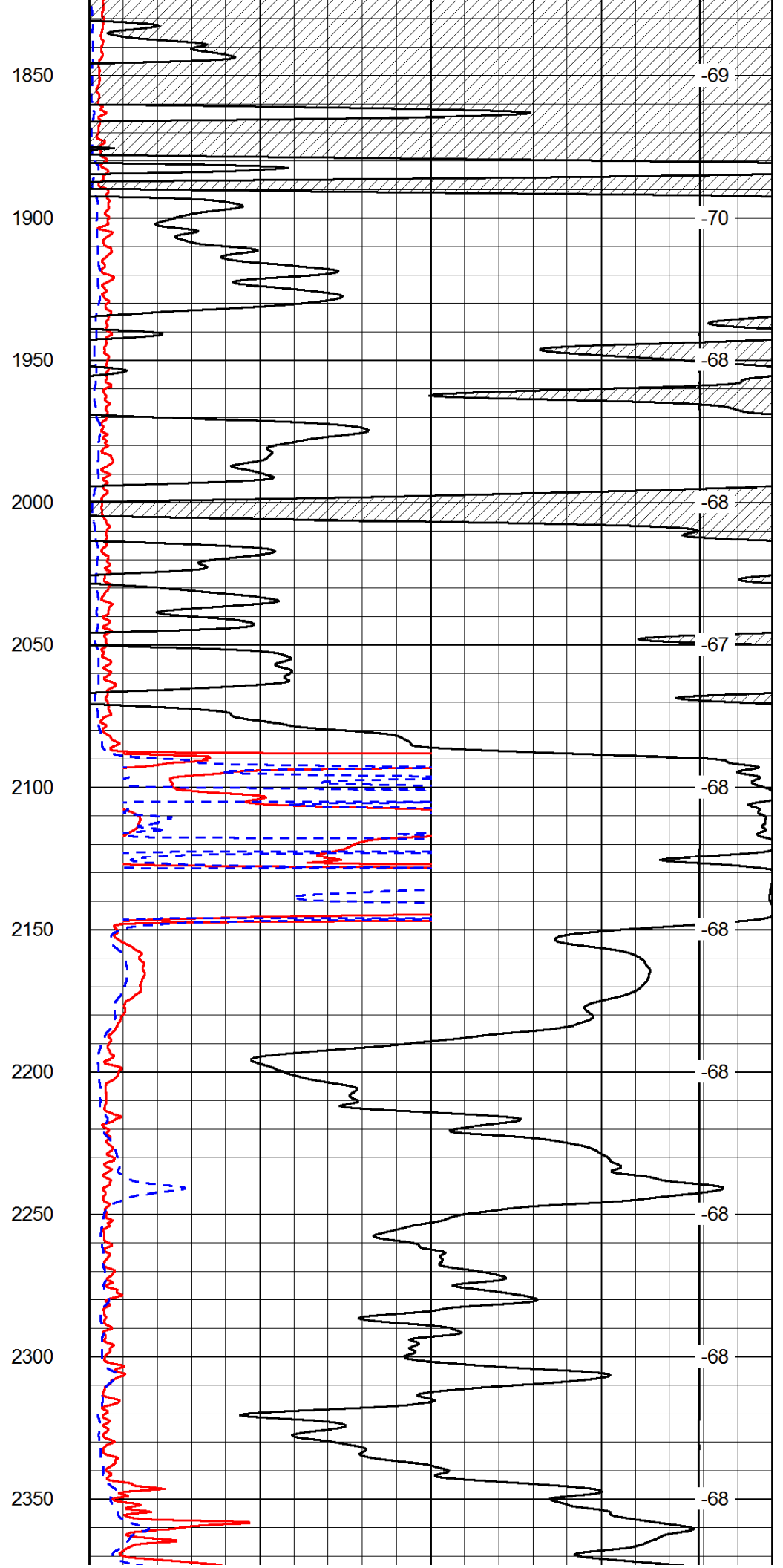
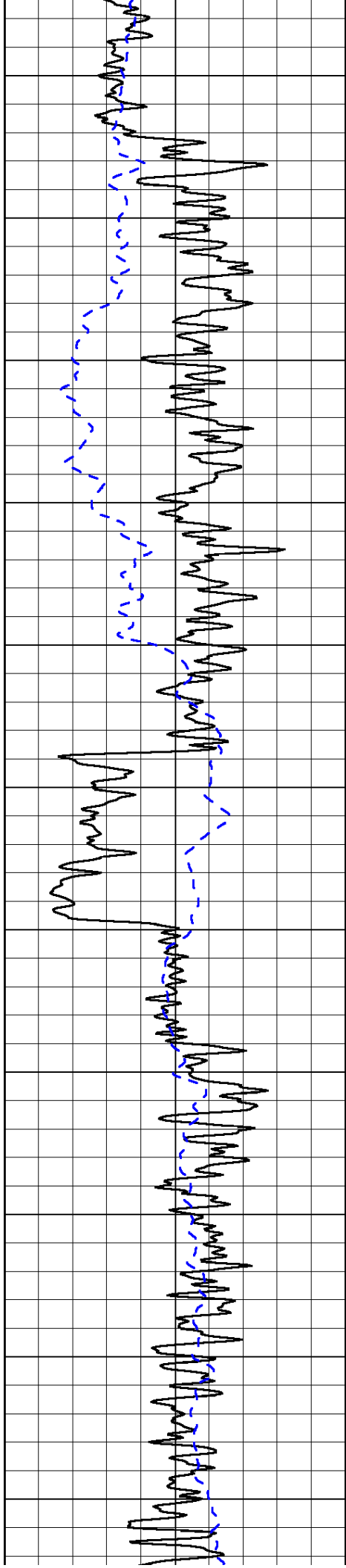
0 Shallow Resistivity 50
0 Deep Resistivity 50
1000 Conductivity 0
15000 Line Tension 0
50 Shallow Resistivity 500
50 Deep Resistivity 500

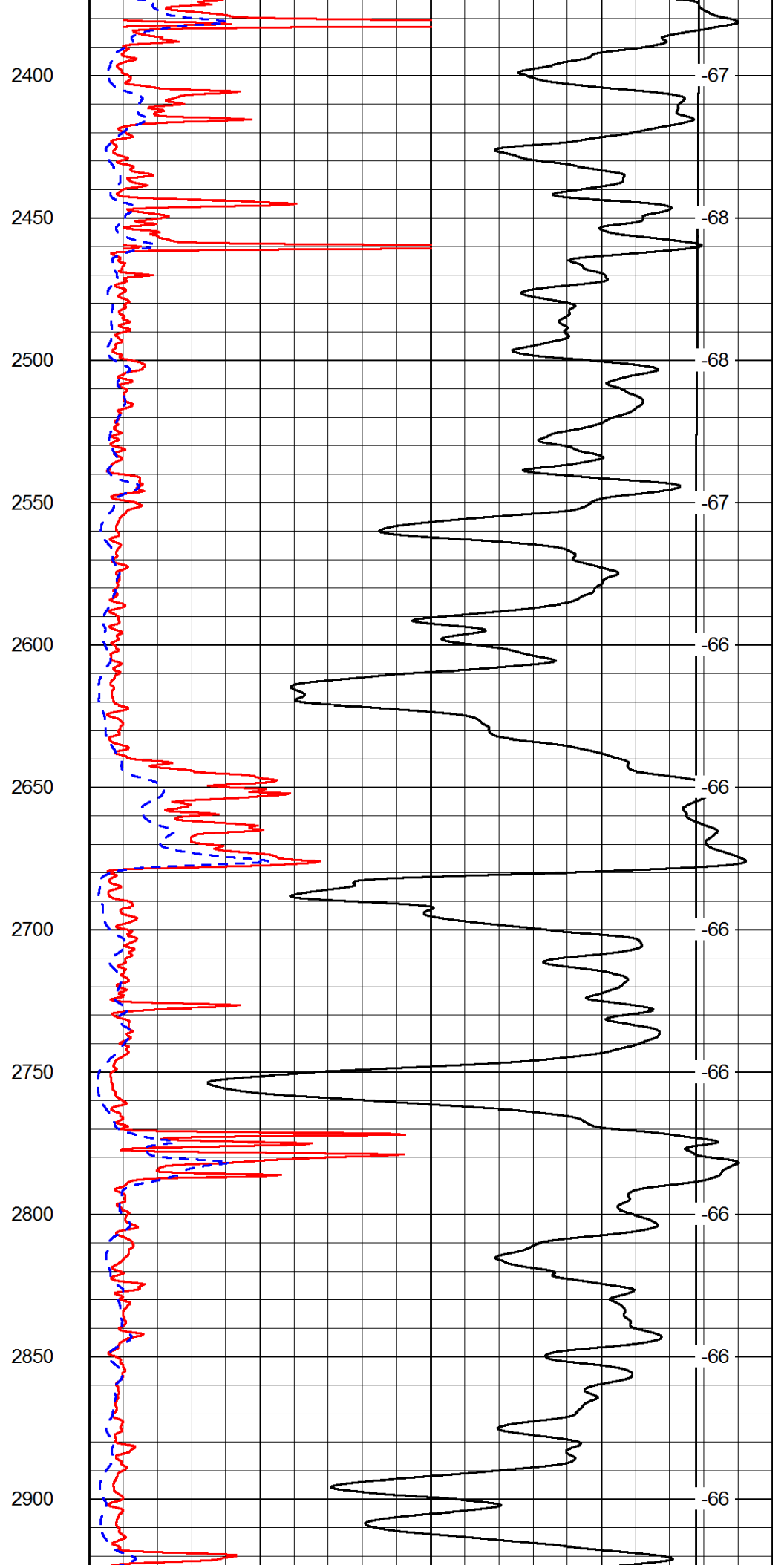
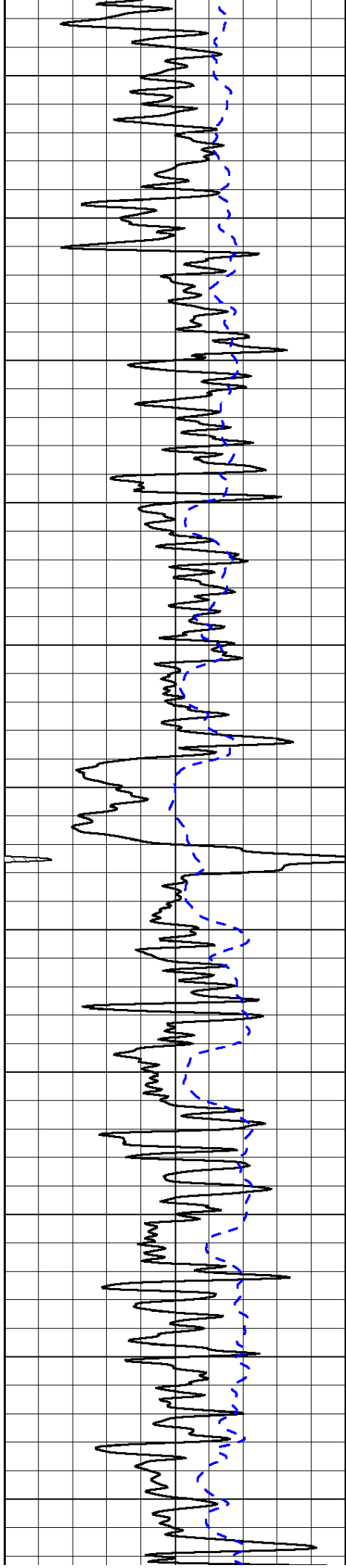
LSPD 0

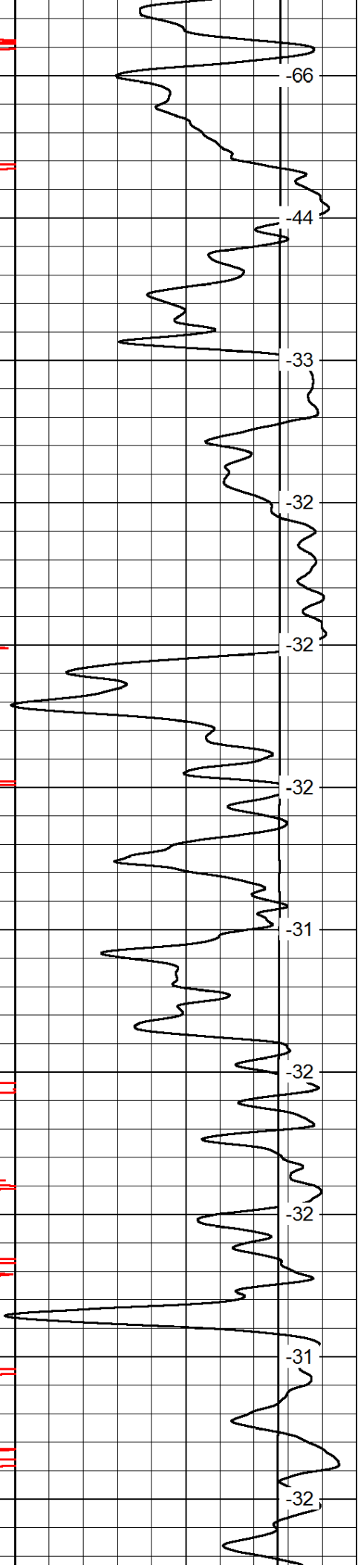
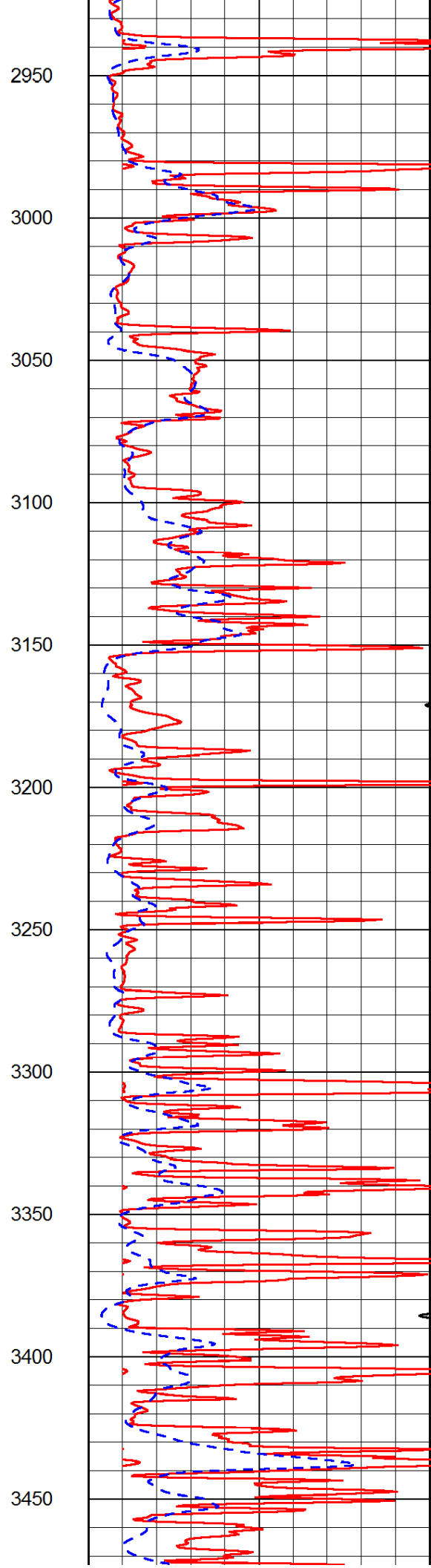
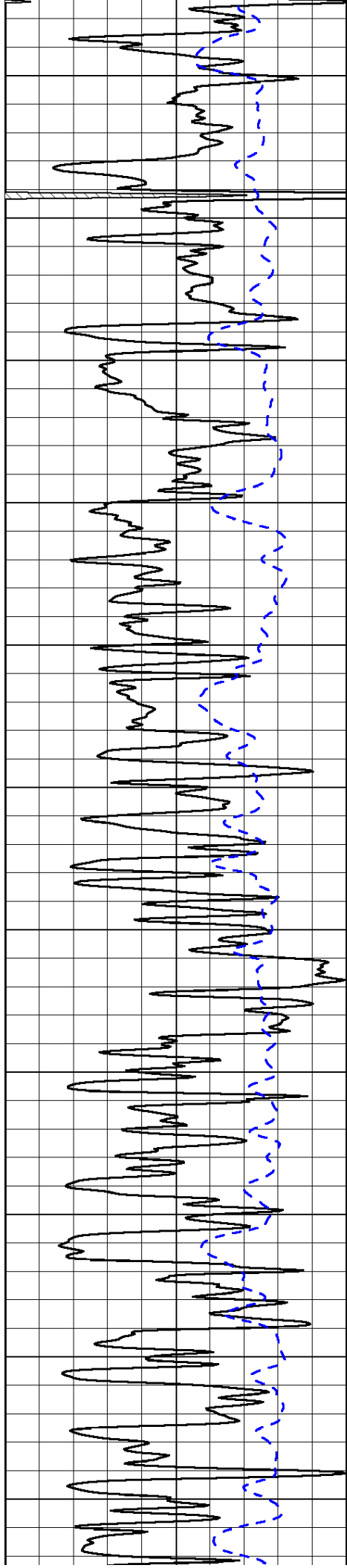


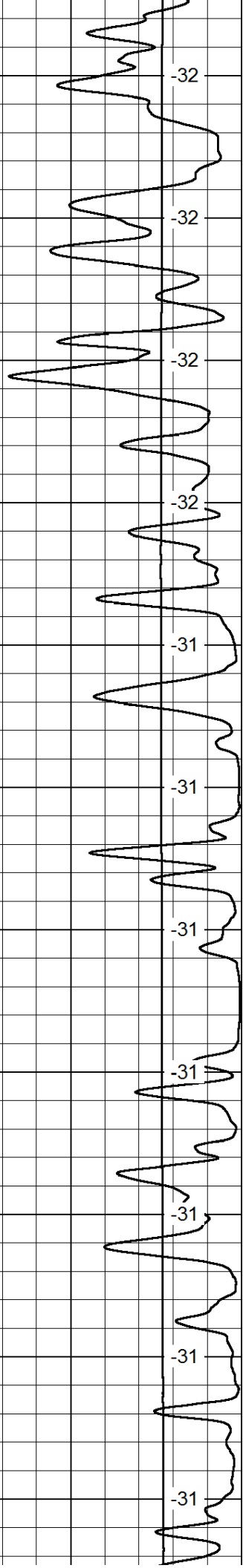
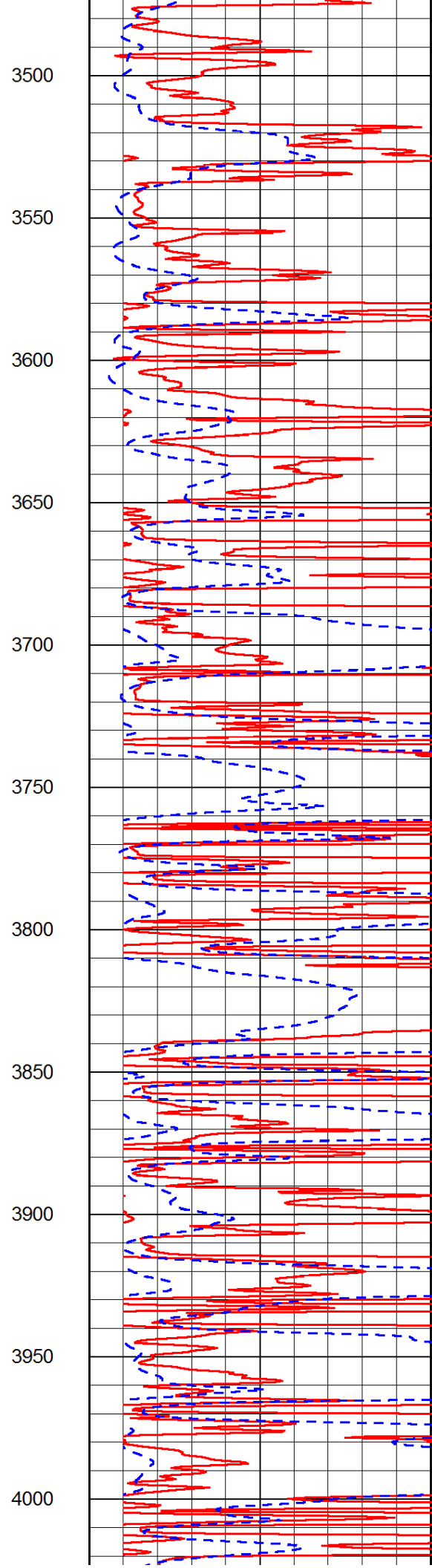
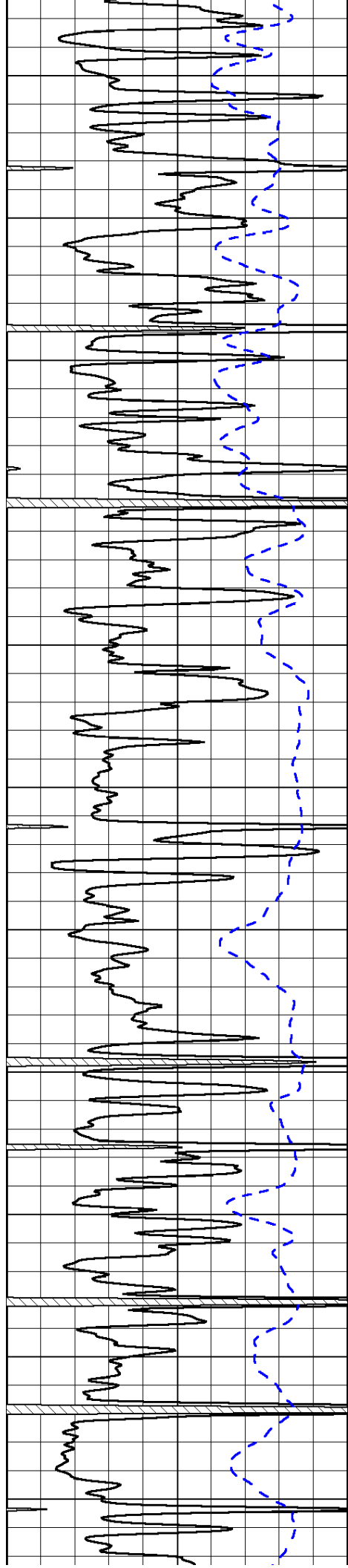


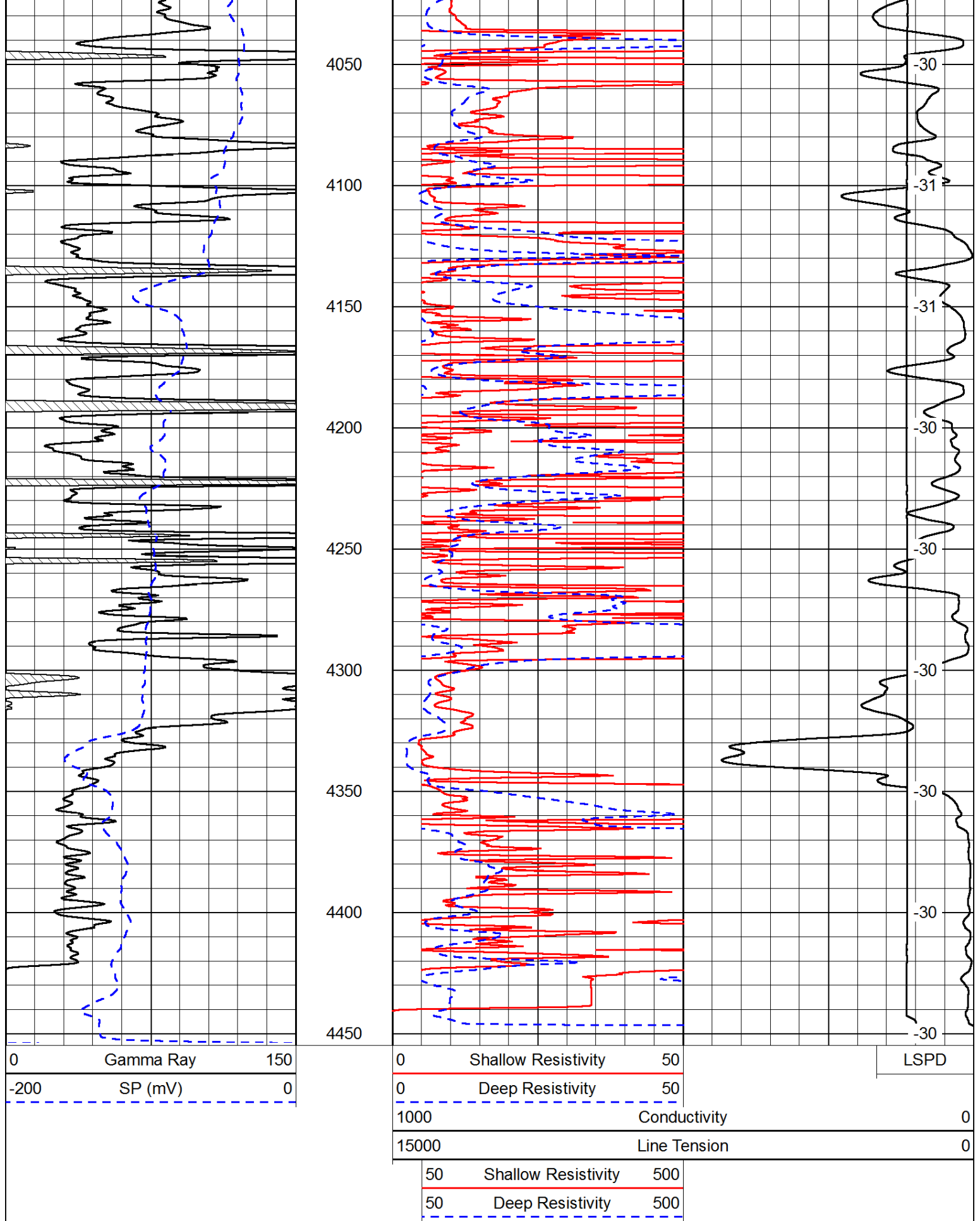










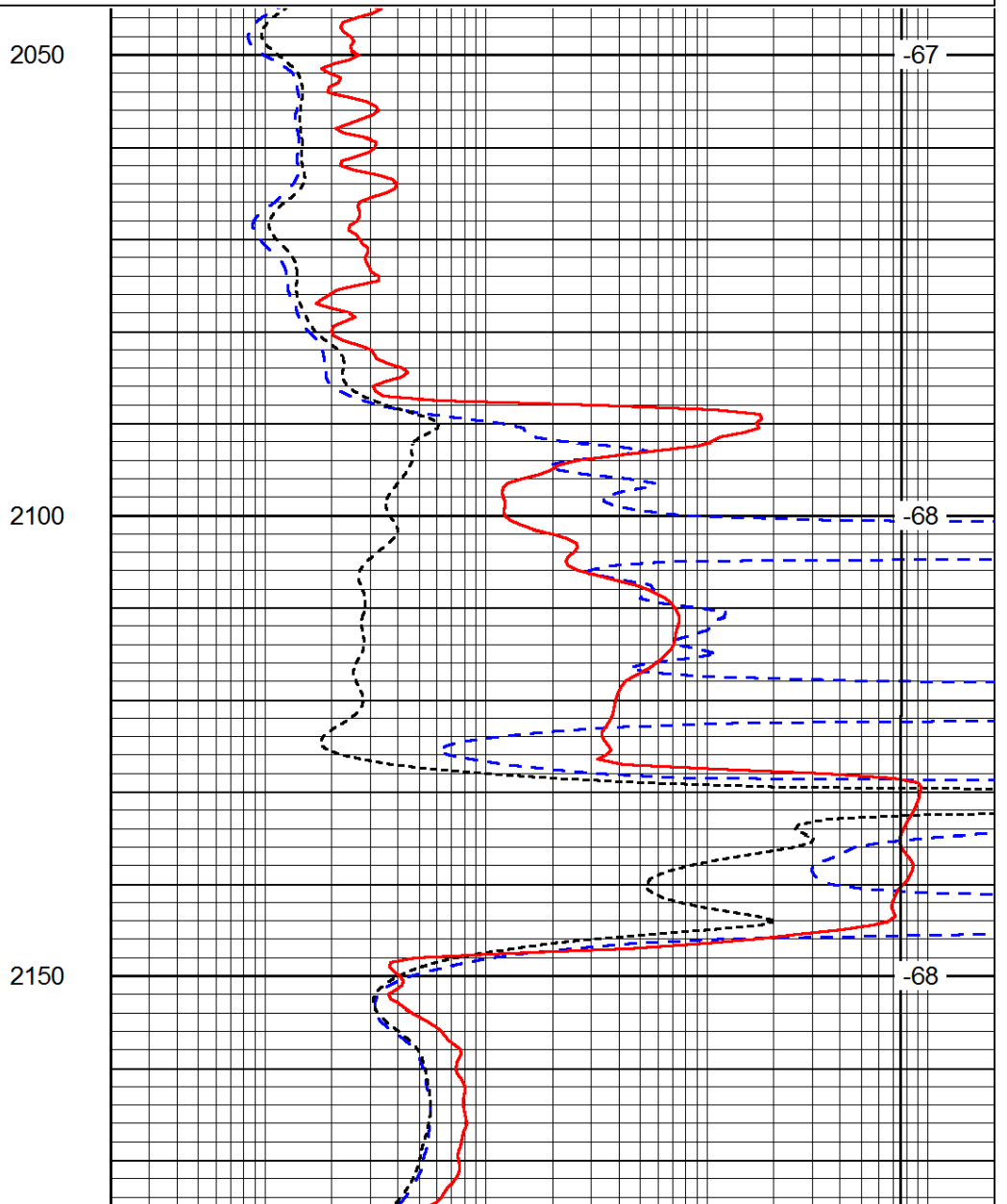
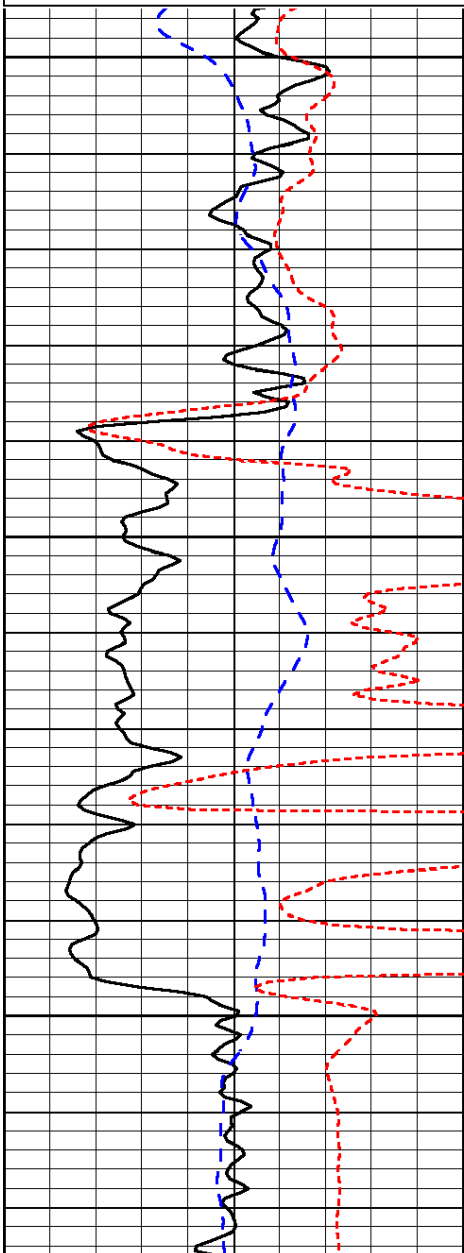


Database File: c:\warrior\data\black tea_hibbert 'a' #3\blacktea_hibbert_a_3hd.db
 Dataset Pathname: DIL/btstk
 Presentation Format: dil

0	Gamma Ray	150
-200	SP (mV)	0
-160	RxoRt	40

0.2	Deep Resistivity	2000
0.2	Medium Resistivity	2000
0.2	Shallow Resistivity	2000
15000	Line Tension	0

LSPD



0	Gamma Ray	150
-200	SP (mV)	0
-160	RxoRt	40

0.2	Deep Resistivity	2000
0.2	Medium Resistivity	2000
0.2	Shallow Resistivity	2000
15000	Line Tension	0

LSPD

Database File: c:\warrior\data\black tea_hibbert 'a' #3\blacktea_hibbert_a_3hd.db
 Dataset Pathname: DIL/bsttk
 Presentation Format: dil
 Dataset Creation: Sun Oct 05 08:44:24 2014
 Charted by: Depth in Feet scaled 1:240

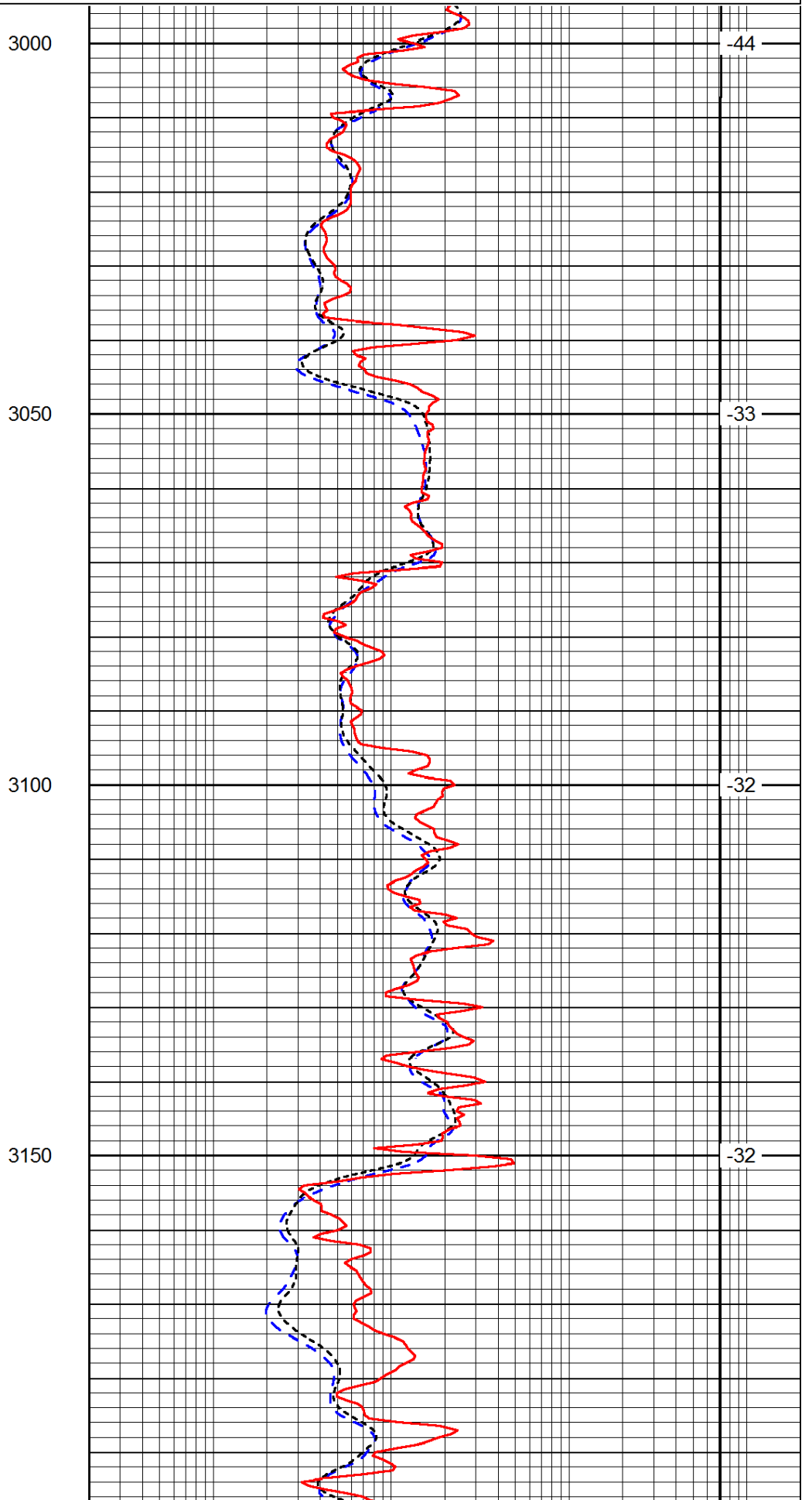
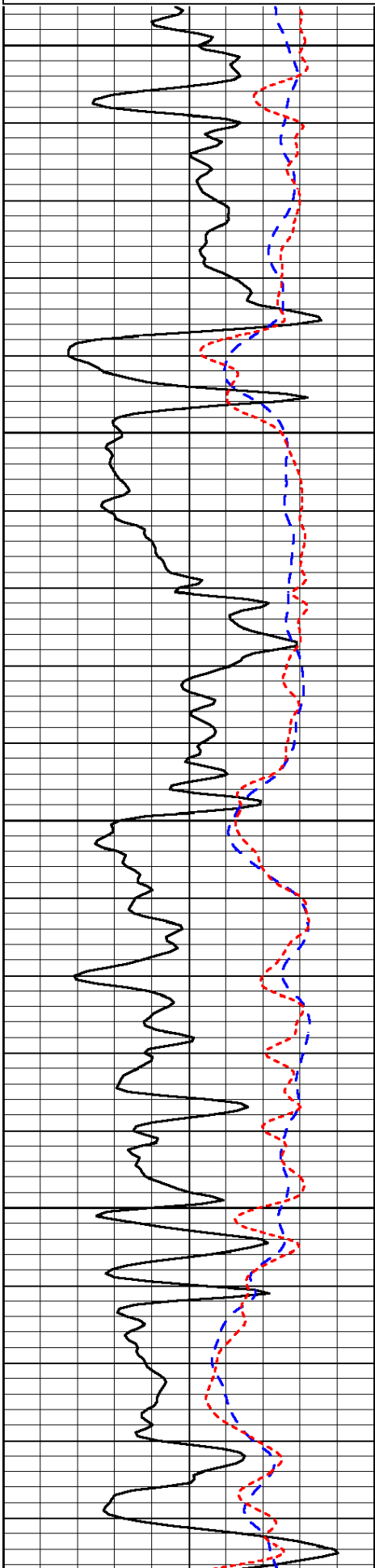
0	Gamma Ray	150
-200	SP (mV)	0
-160	RxoRt	40

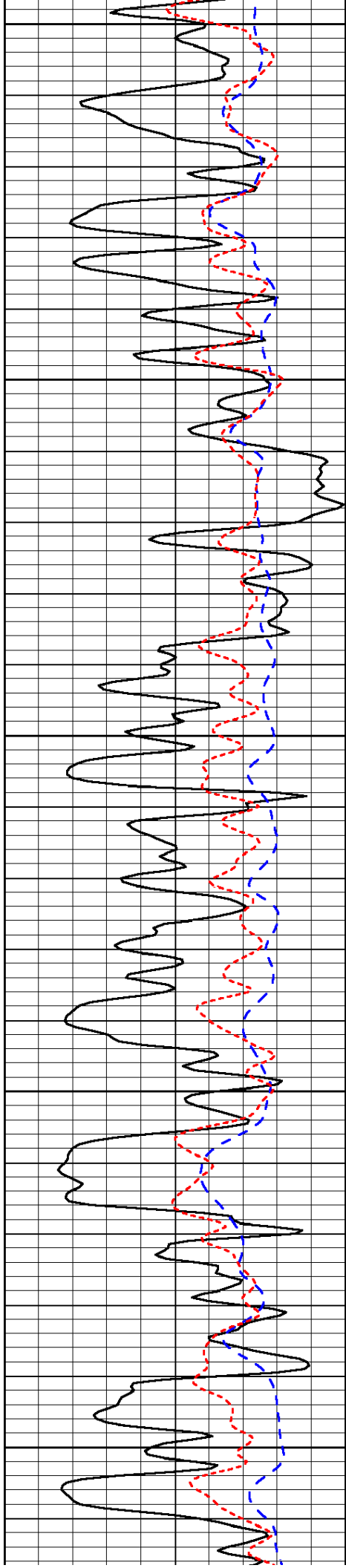
0.2	Deep Resistivity	2000
0.2	Medium Resistivity	2000
0.2	Shallow Resistivity	2000
15000	Line Tension	0

-200 SP (mV) 0
-160 RxoRt 40

0.2 Medium Resistivity 2000
0.2 Shallow Resistivity 2000
15000 Line Tension 0

LSPD





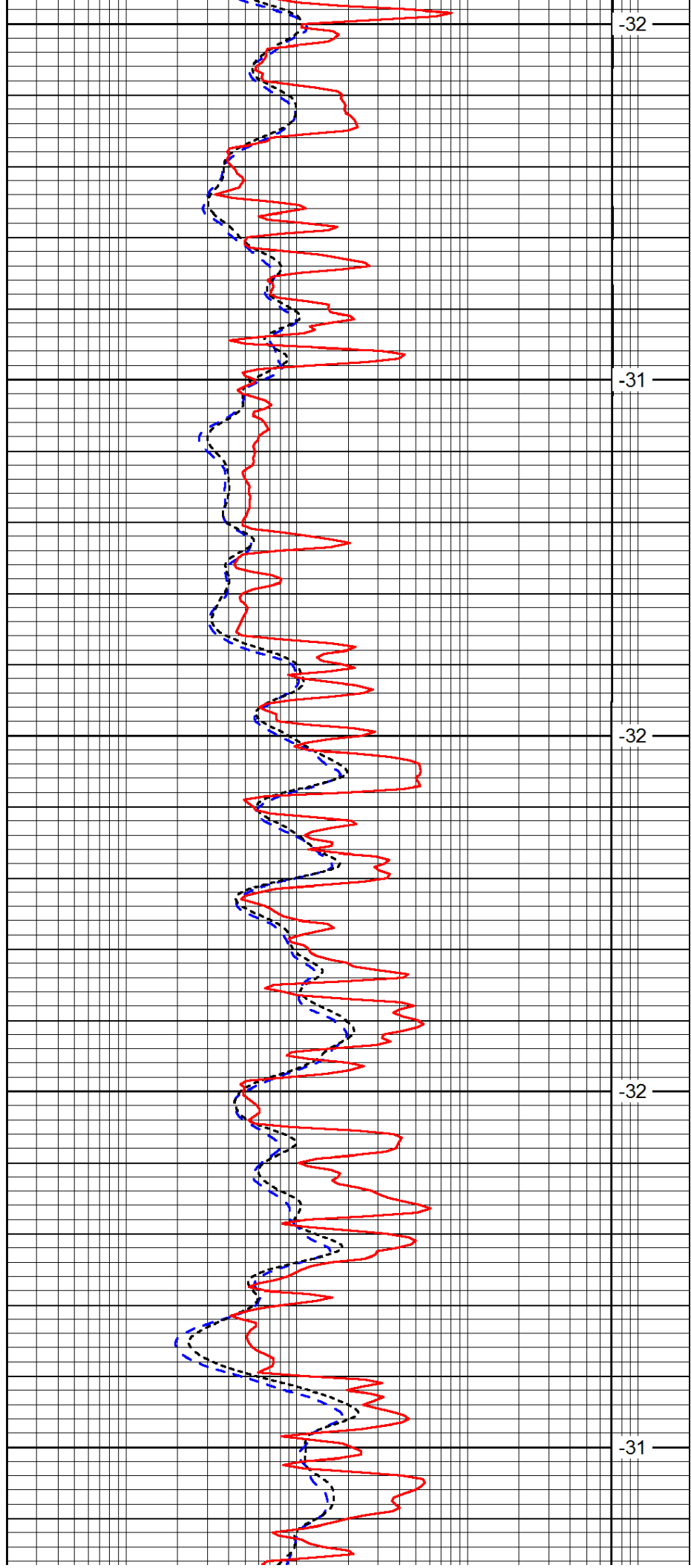
3200

3250

3300

3350

3400



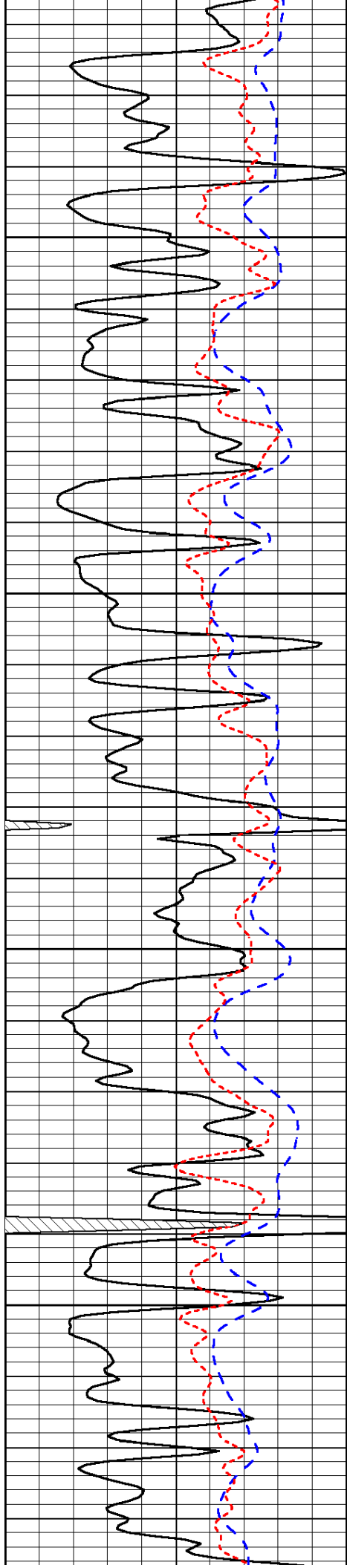
-32

-31

-32

-32

-31

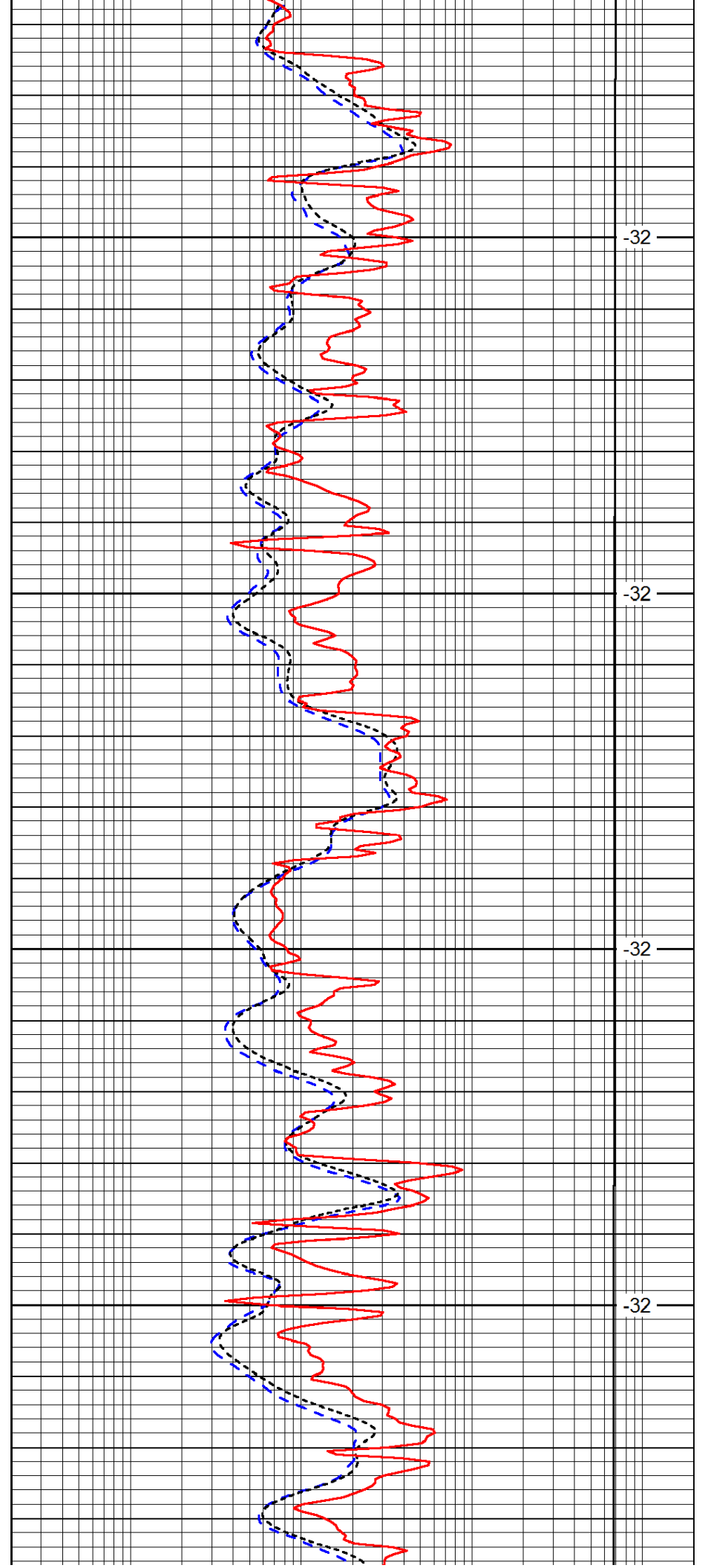


3450

3500

3550

3600

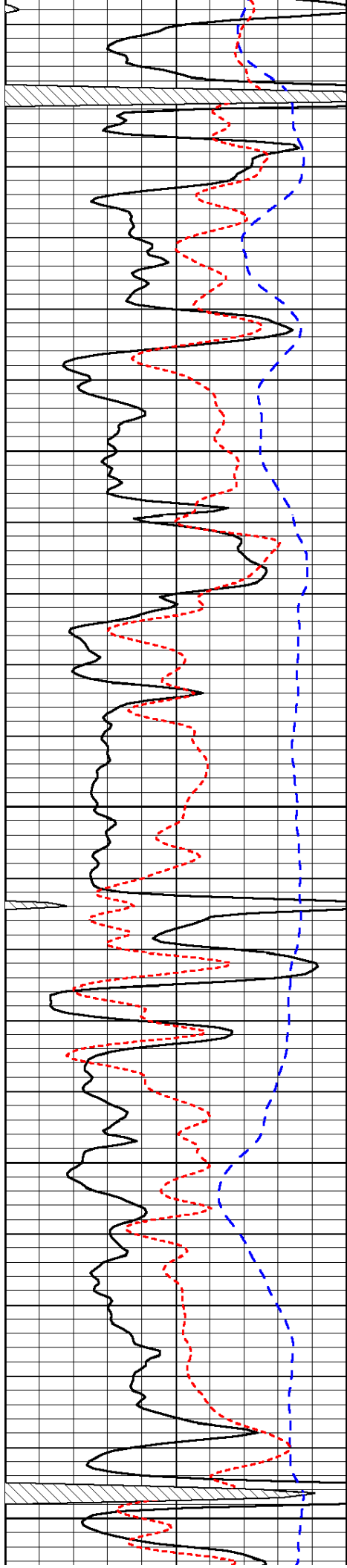


-32

-32

-32

-32



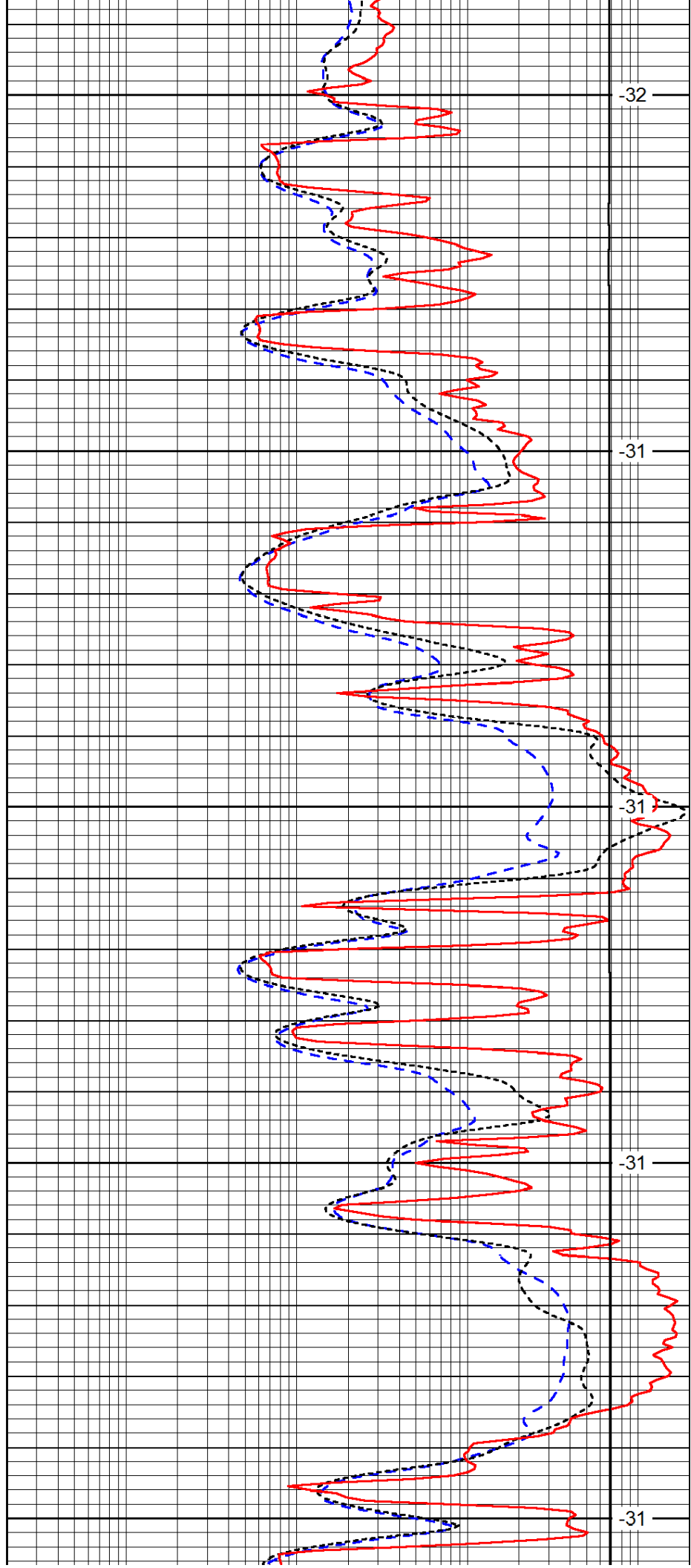
3650

3700

3750

3800

3850



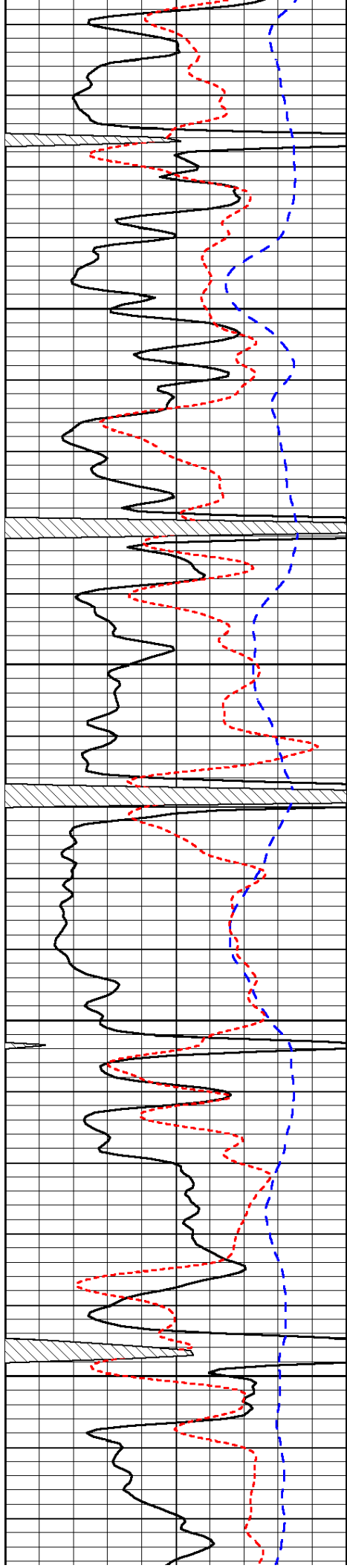
-32

-31

-31

-31

-31

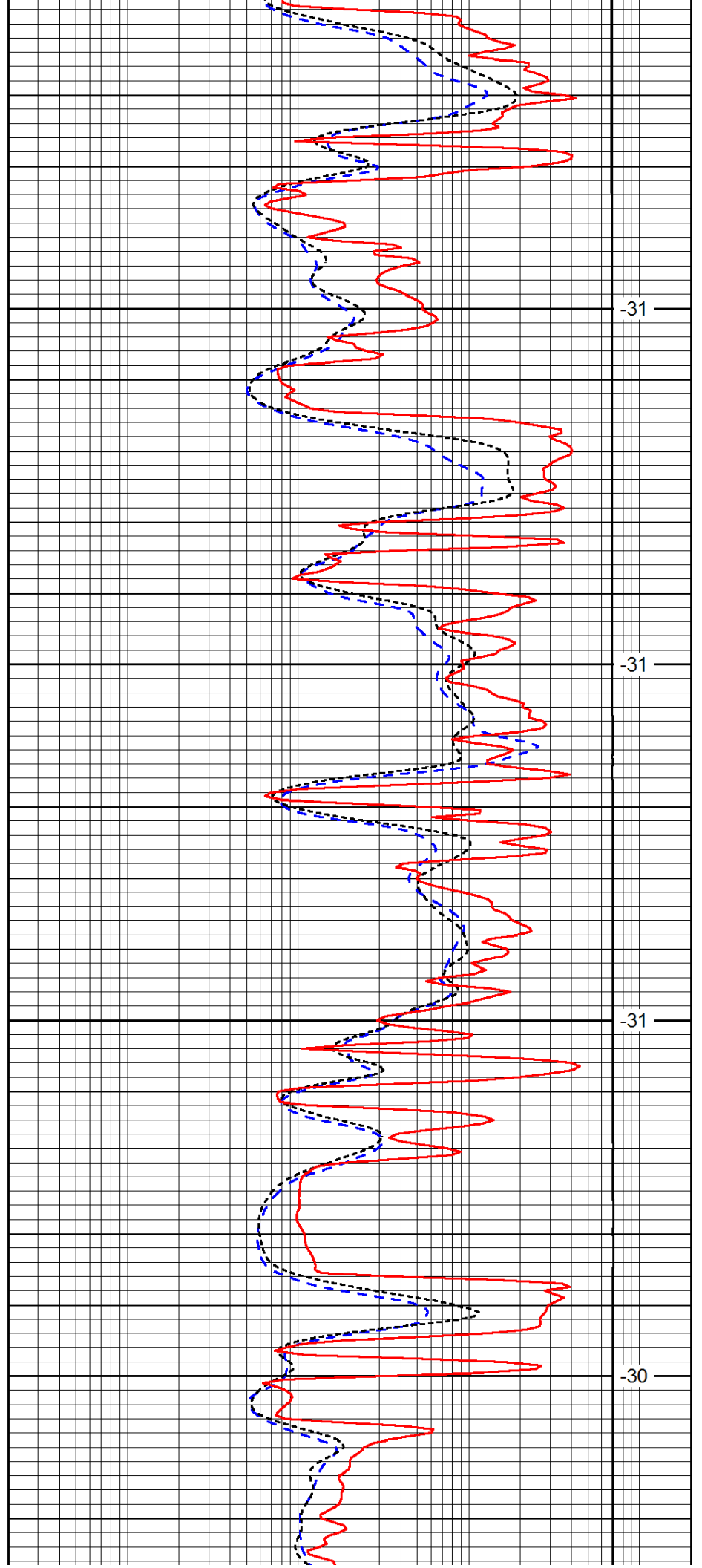


3900

3950

4000

4050

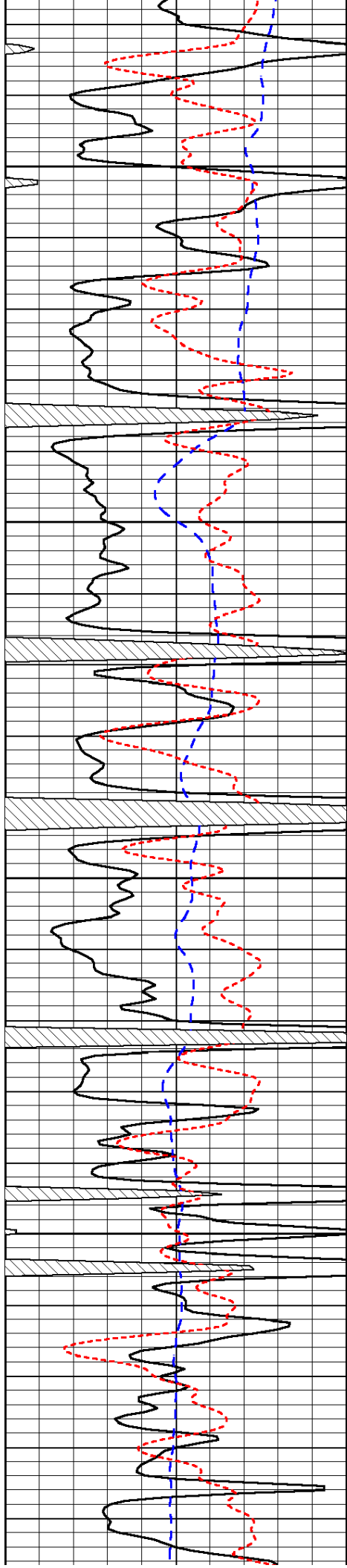


-31

-31

-31

-30

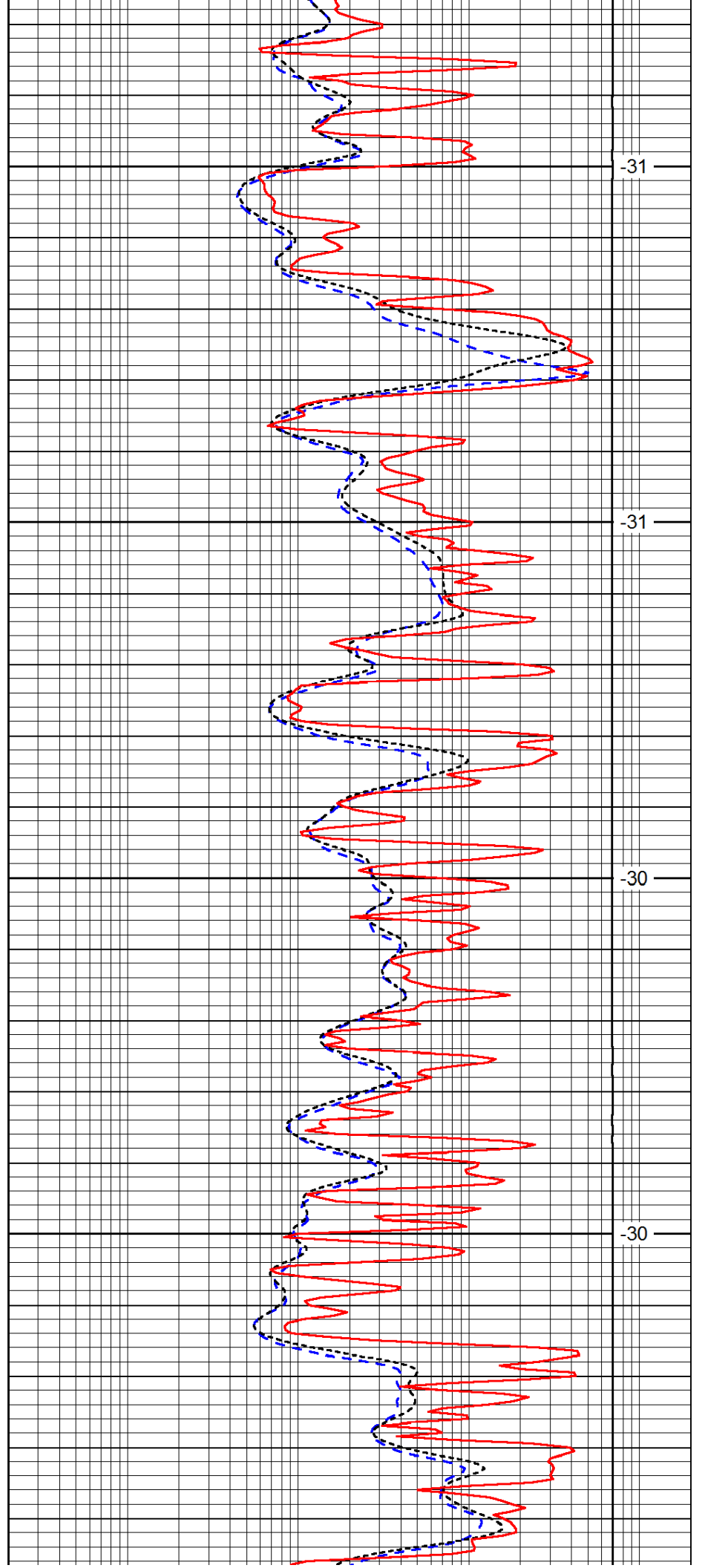


4100

4150

4200

4250

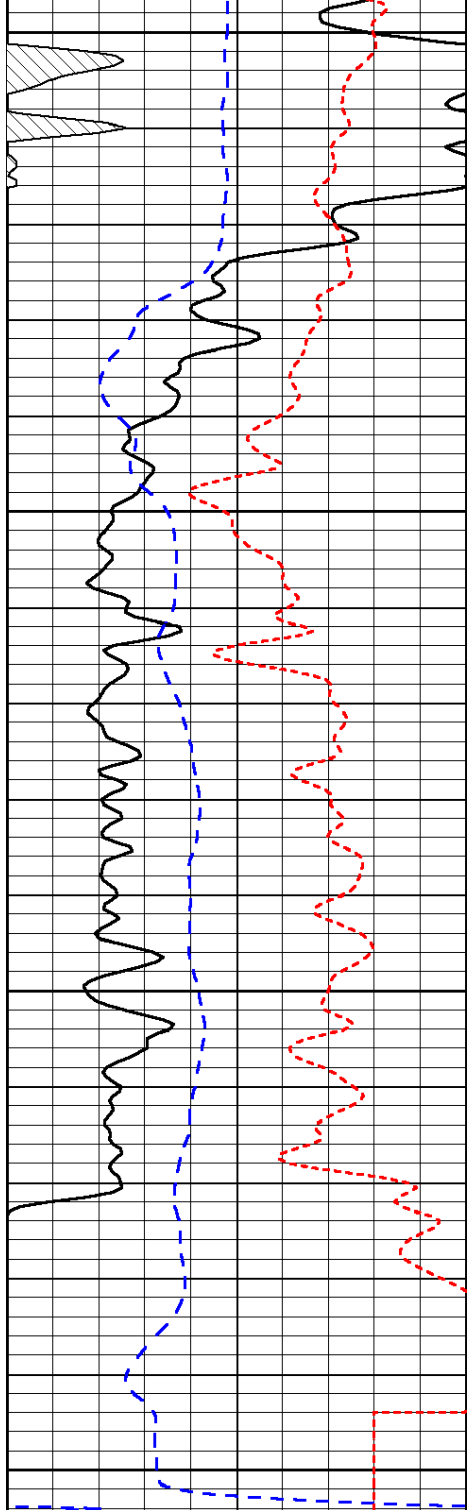


-31

-31

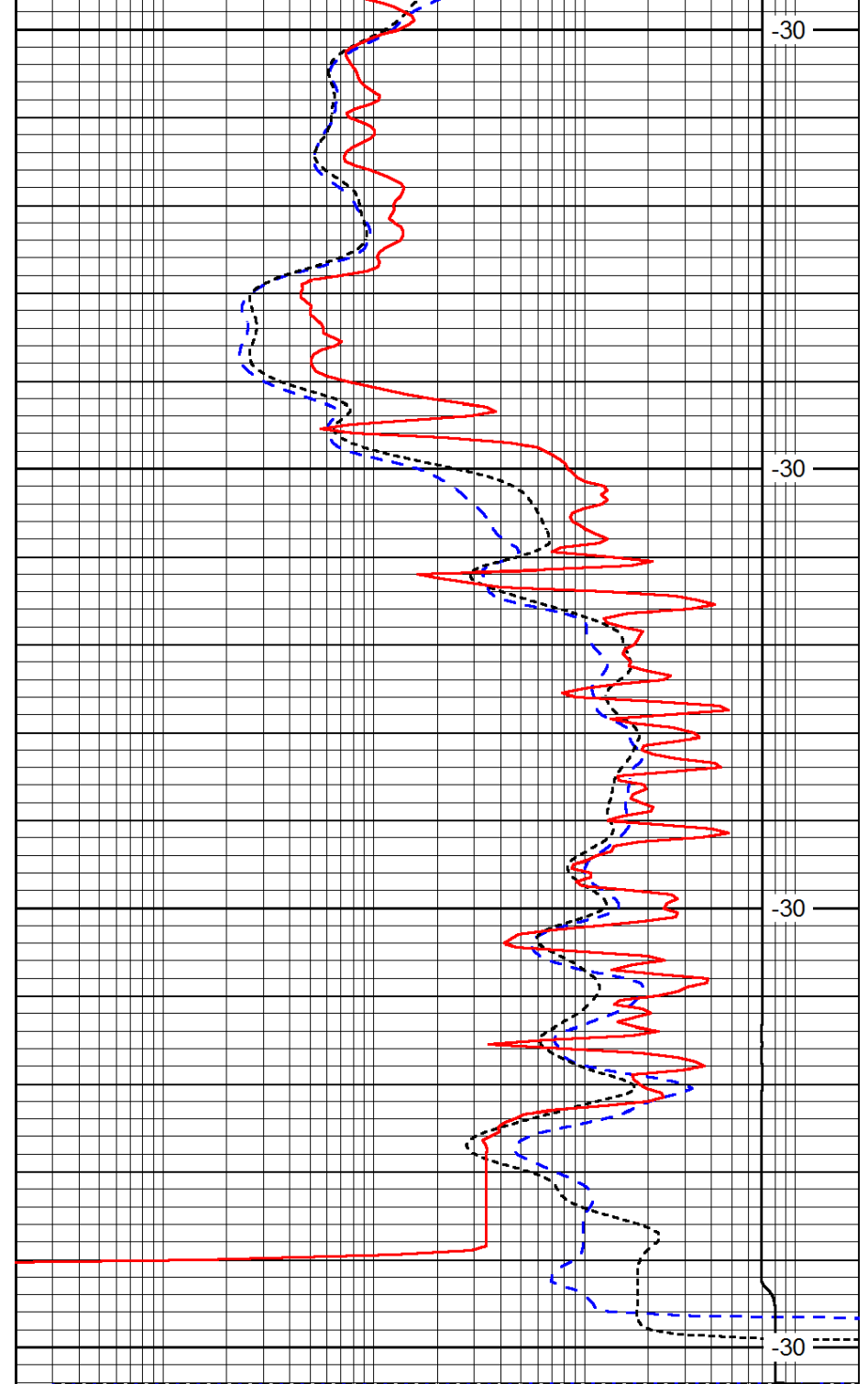
-30

-30



4300
4350
4400
4450

0	Gamma Ray	150
-200	SP (mV)	0
-160	RxoRt	40



-30
-30
-30
-30

0.2	Deep Resistivity	2000
0.2	Medium Resistivity	2000
0.2	Shallow Resistivity	2000
15000	Line Tension	0

LSPD