



Pioneer Energy Services

Borehole Compensated Sonic Log

15-109-21,329-00-00

Company **Black Tea Oil, LLC**
 Well **Hibbert 'A' #3**
 Field **Bridges**
 County **Logan** State **Kansas**

Location **1855' FNL & 764' FEL**
 Sec: **27** Twp: **14S** Rge: **32W**

Other Services
 CNL/CDL
 MEL/DIL

Permanent Datum **Ground Level** Elevation **2668**
 Log Measured From **Kelly Bushing** 12 Ft. Above Perm. Datum
 Drilling Measured From **Kelly Bushing**

Elevation
 K.B. 2680
 D.F. G.I.L. 2668

Date	10/5/2014	
Run Number	Two	
Type Log	BHC Sonic	
Depth Driller	4475	
Depth Logger	4444	
Bottom Logged Interval	4433	
Top Logged Interval	250	
Type Fluid In Hole	Chemical	
Salinity, PPM CL	7000	
Density	9.1	
Level	Full	
Max. Rec. Temp. F	121	
Operating Rig Time	5 Hours	
Equipment -- Location	15 Hays	
Recorded By	D.Kerr	
Witnessed By	Rich Thomasson	

Borehole Record		Casing Record					
Run No	Bit	From	To	Size	Wgt.	From	To
1	12.25	00	264	8.625	24#	00	264
2	7.875	264	4475				

<<< Fold Here >>>

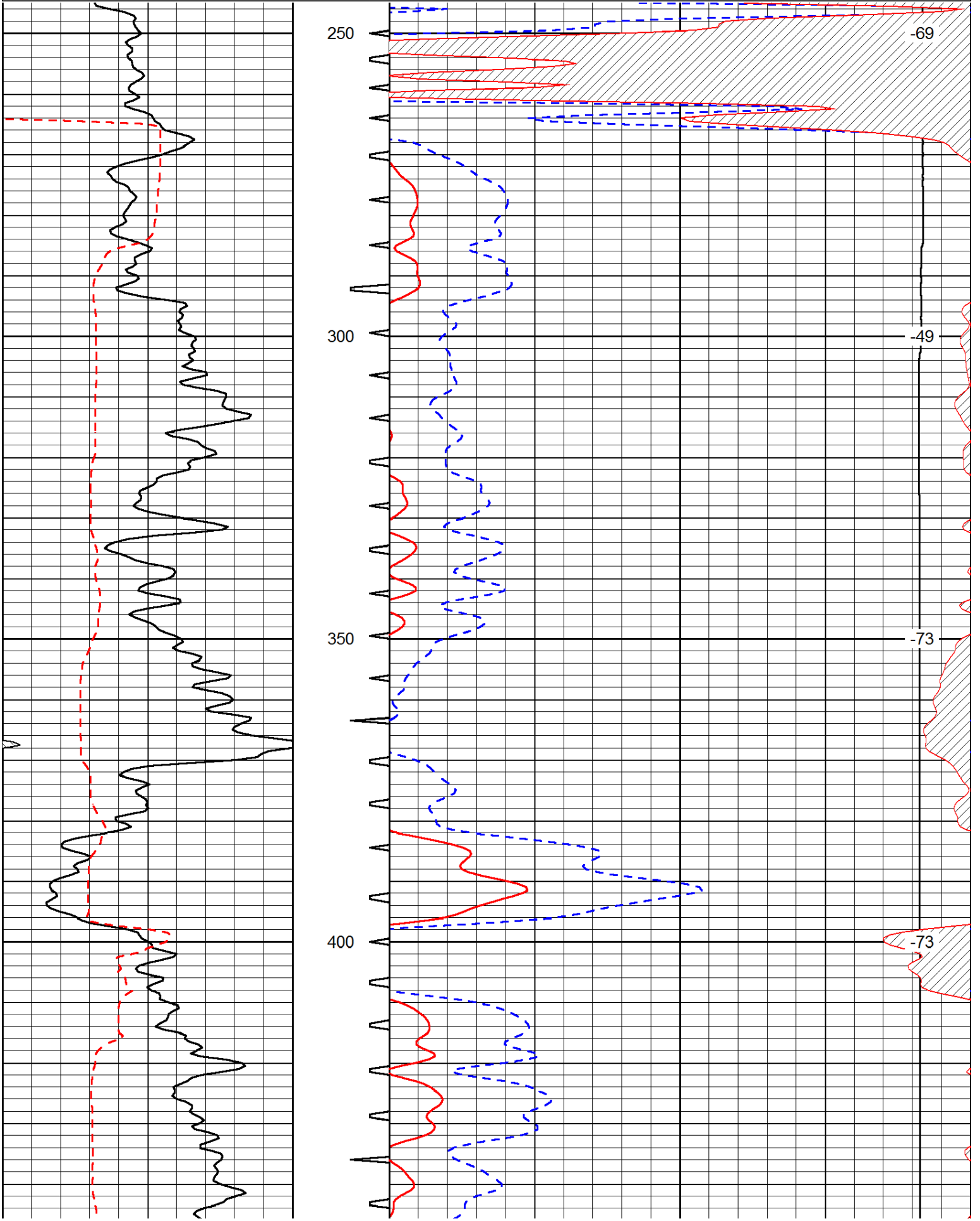
All interpretations are opinions based on inferences from electrical or other measurements and we cannot and do not guarantee the accuracy or correctness of any interpretation, and we shall not, except in the case of gross or willful negligence on our part, be liable or responsible for any loss, costs, damages, or expenses incurred or sustained by anyone resulting from any interpretation made by any of our officers, agents or employees. These interpretations are also subject to our general terms and conditions set out in our current Price Schedule.

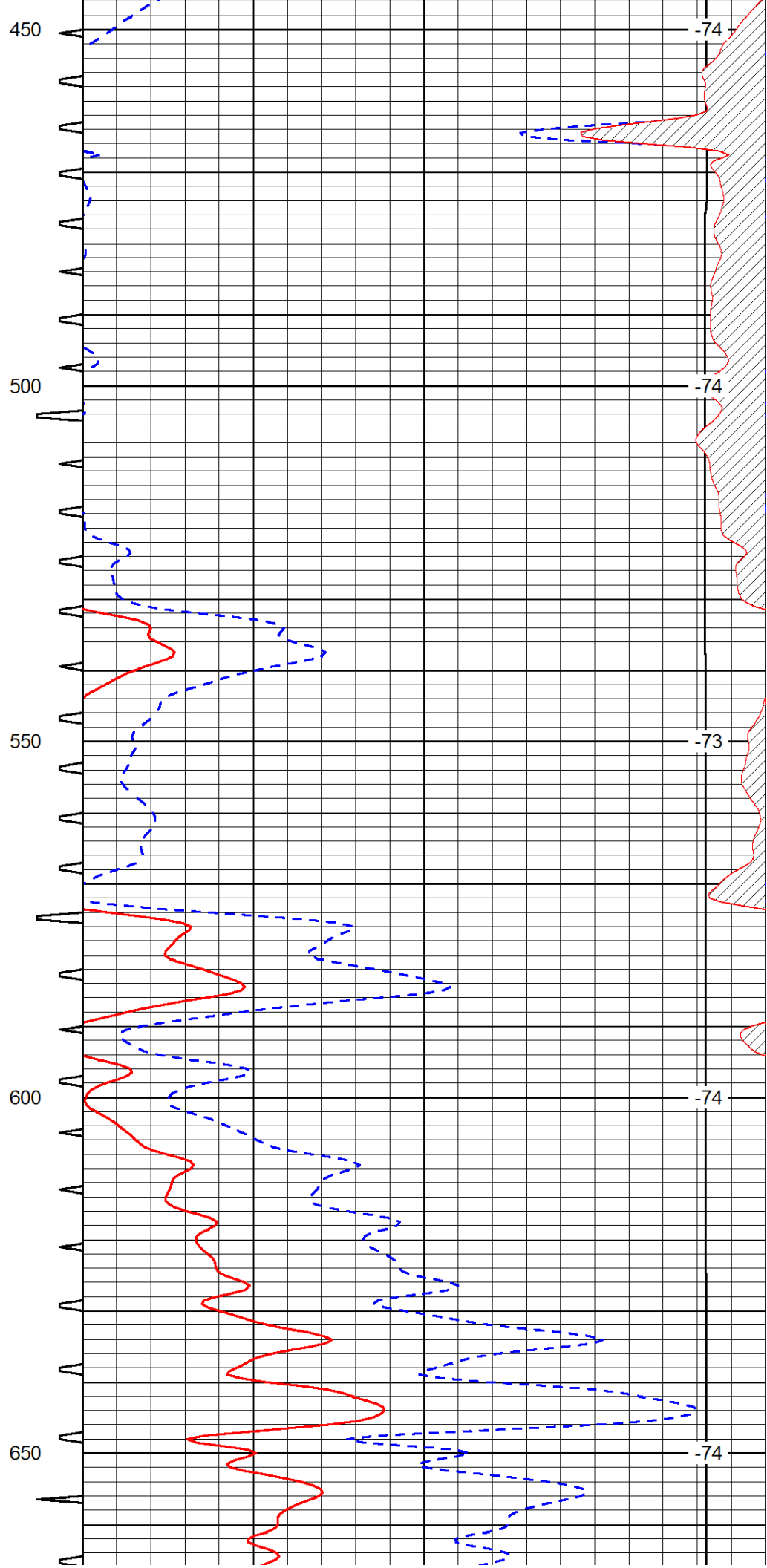
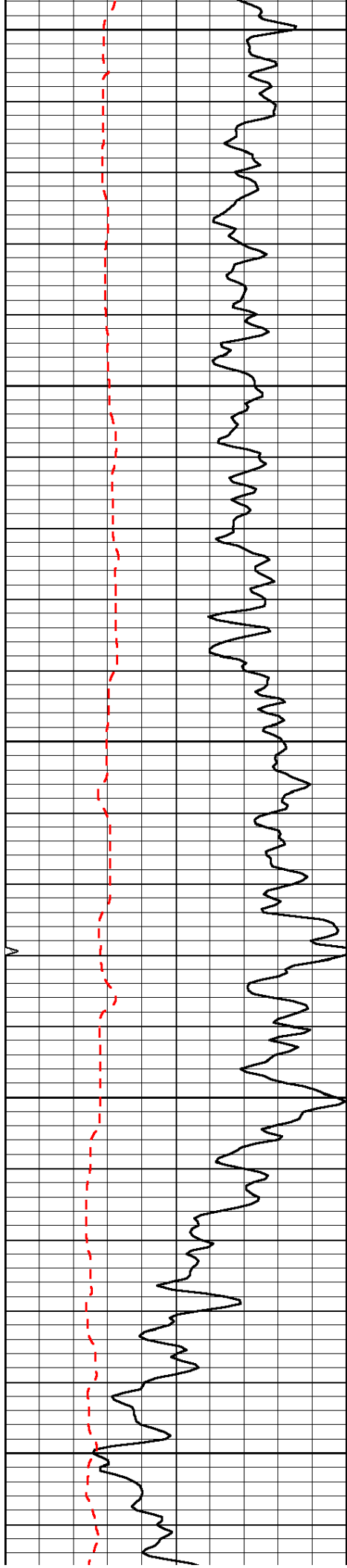
Comments

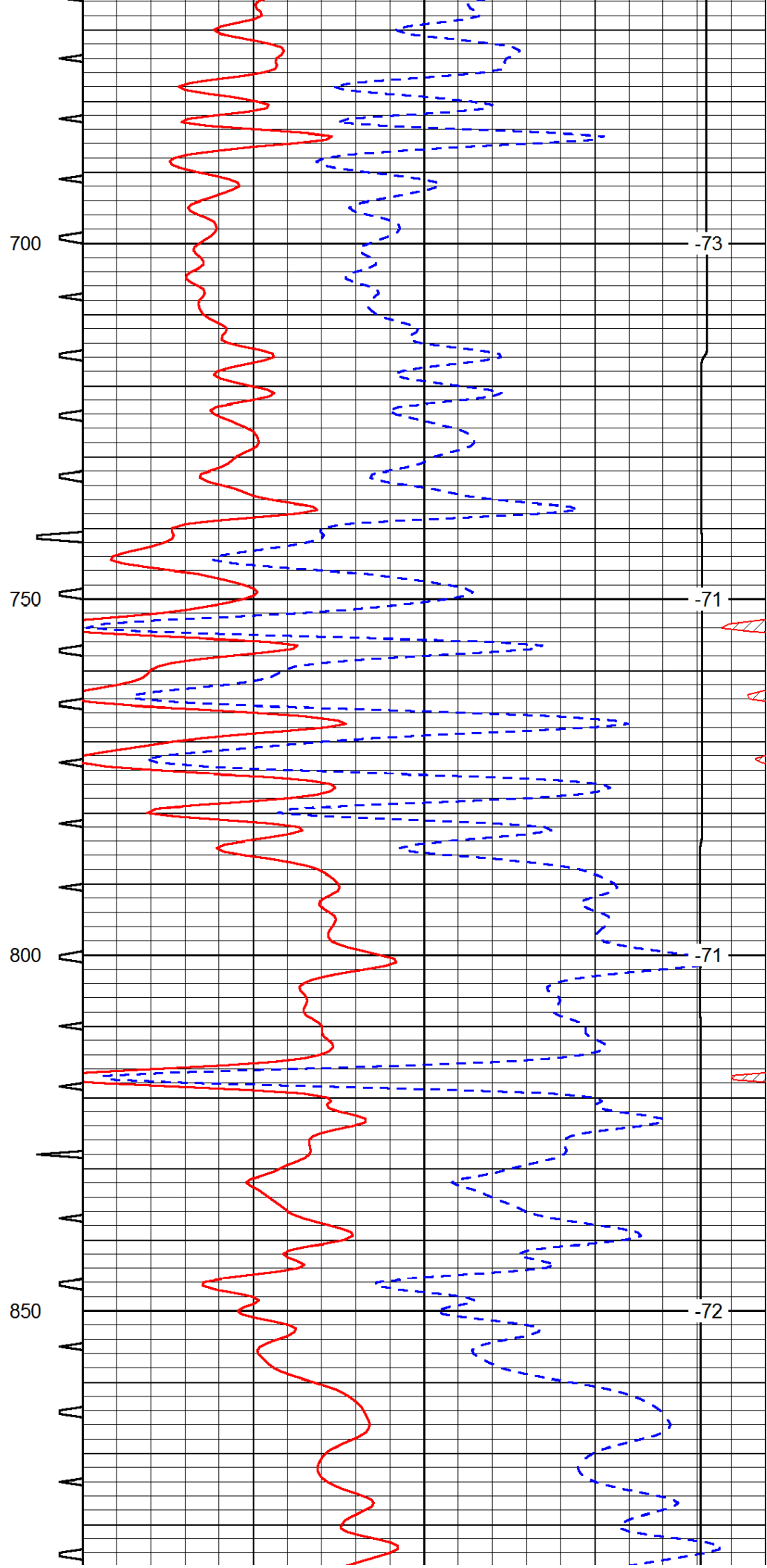
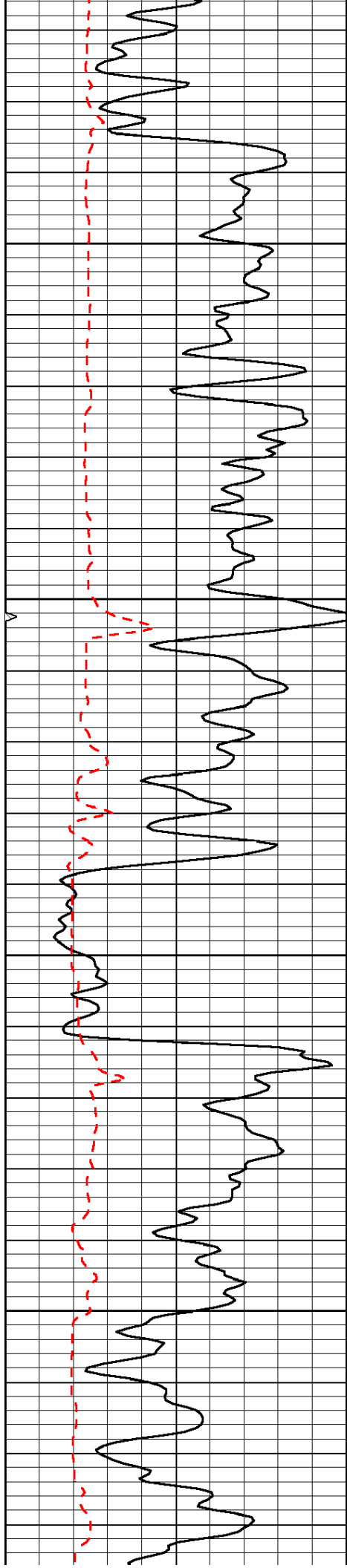
Thank you for using Pioneer Energy Services
 www.pioneeres.com
 785 625 3858
 Oakley KS, 22 South, East Into

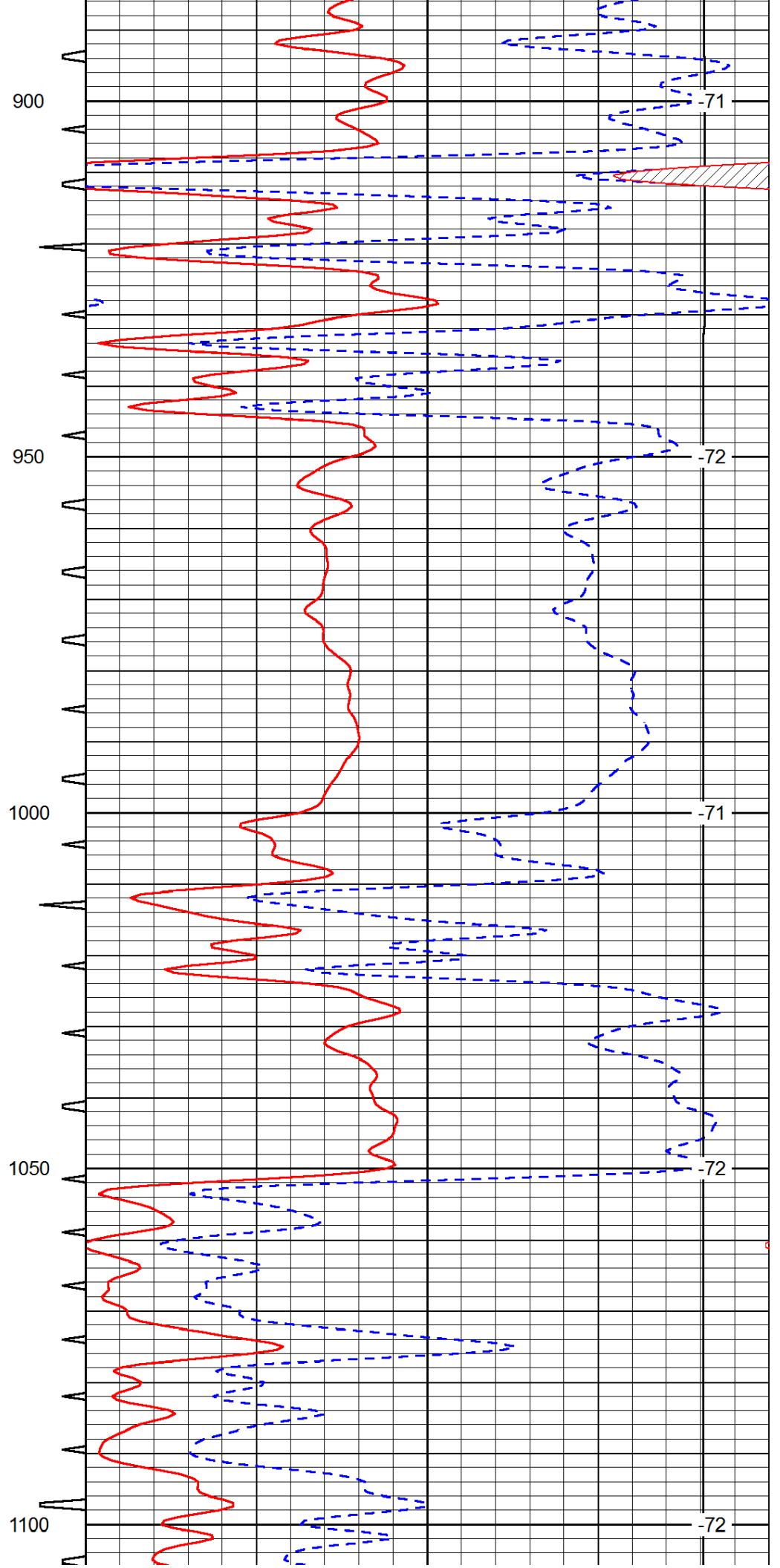
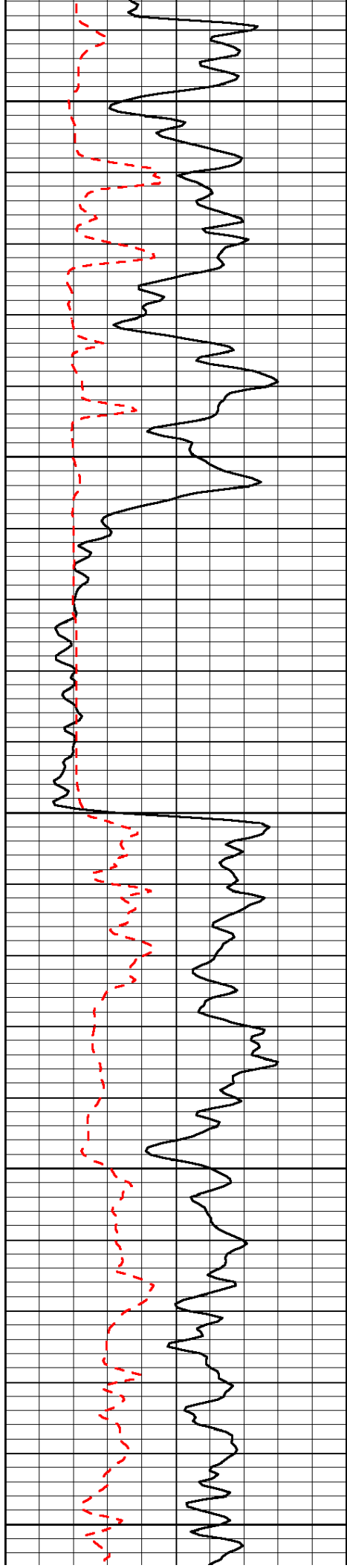
Database File: c:\warrior\data\black tea_hibbert 'a' #3\blacktea_hibbert_a_3hd.db
 Dataset Pathname: DIL/btstk
 Presentation Format: sonic
 Dataset Creation: Sun Oct 05 08:44:24 2014
 Charted by: Depth in Feet scaled 1:240

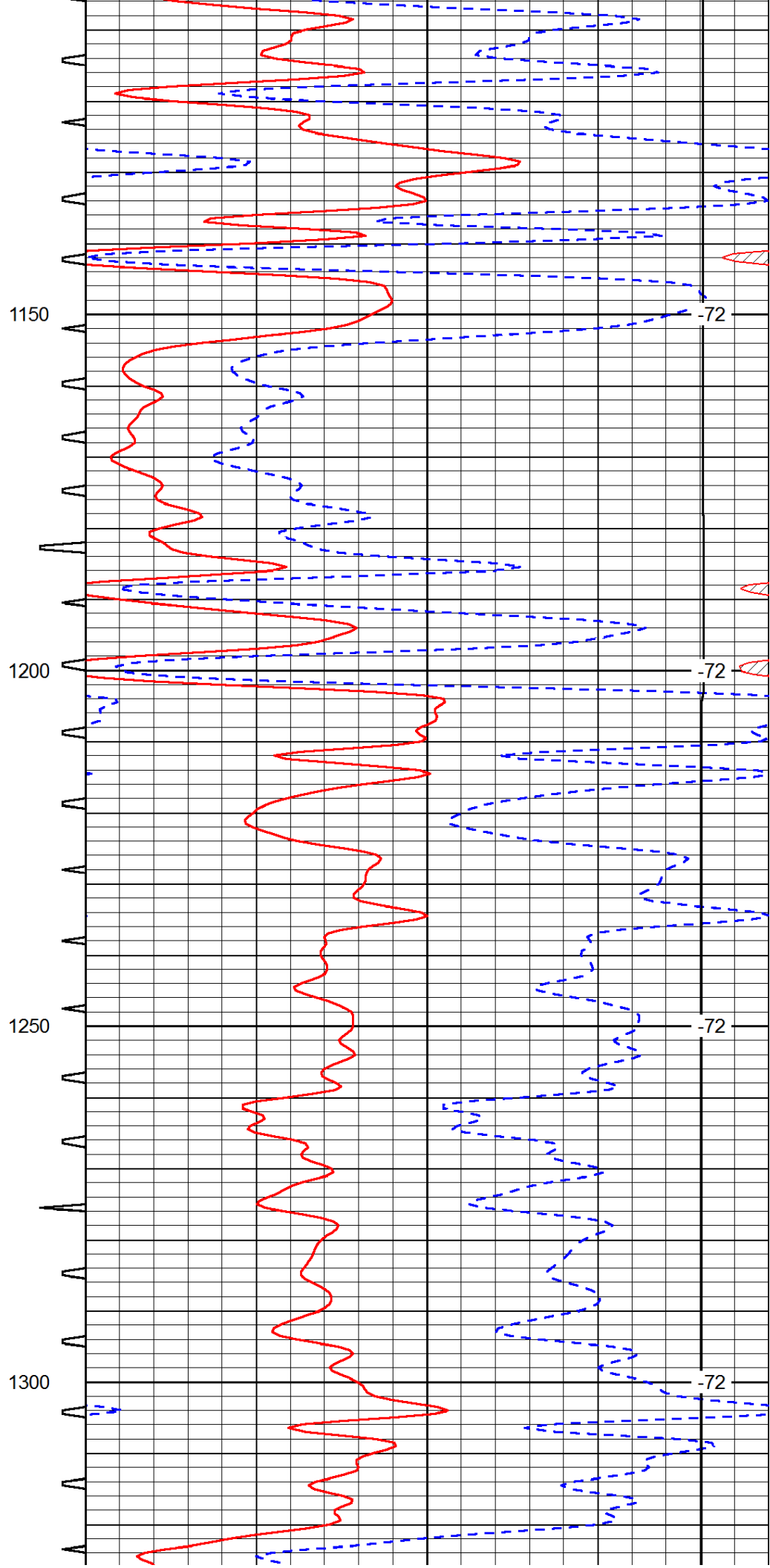
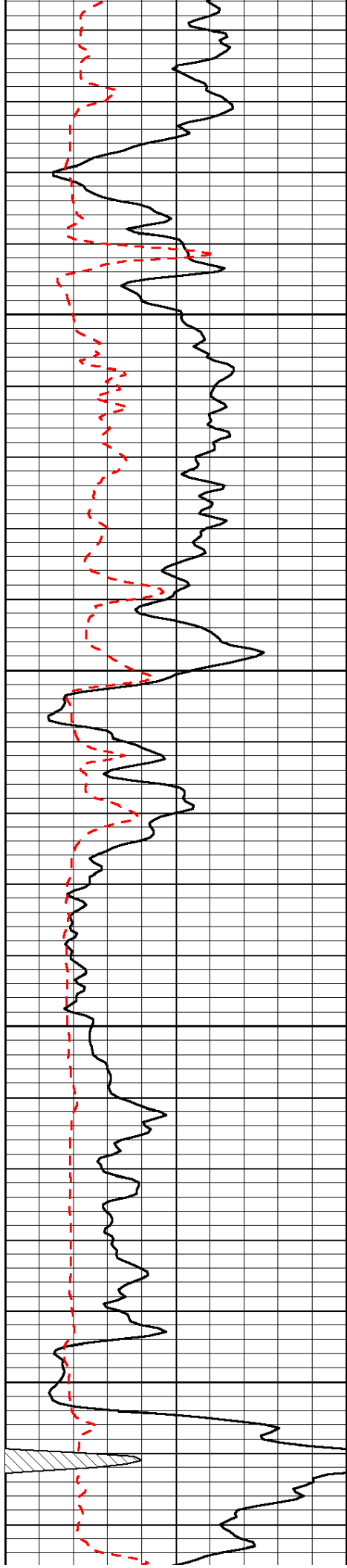
0	Gamma Ray	150	Sonic Int	140	Delta Time (usec/ft)	40
150	Gamma Ray	300	5	0	SPOR	-10
6	Caliper (GAPI)	16		15000	LTEN (lb)	0
						LSPD

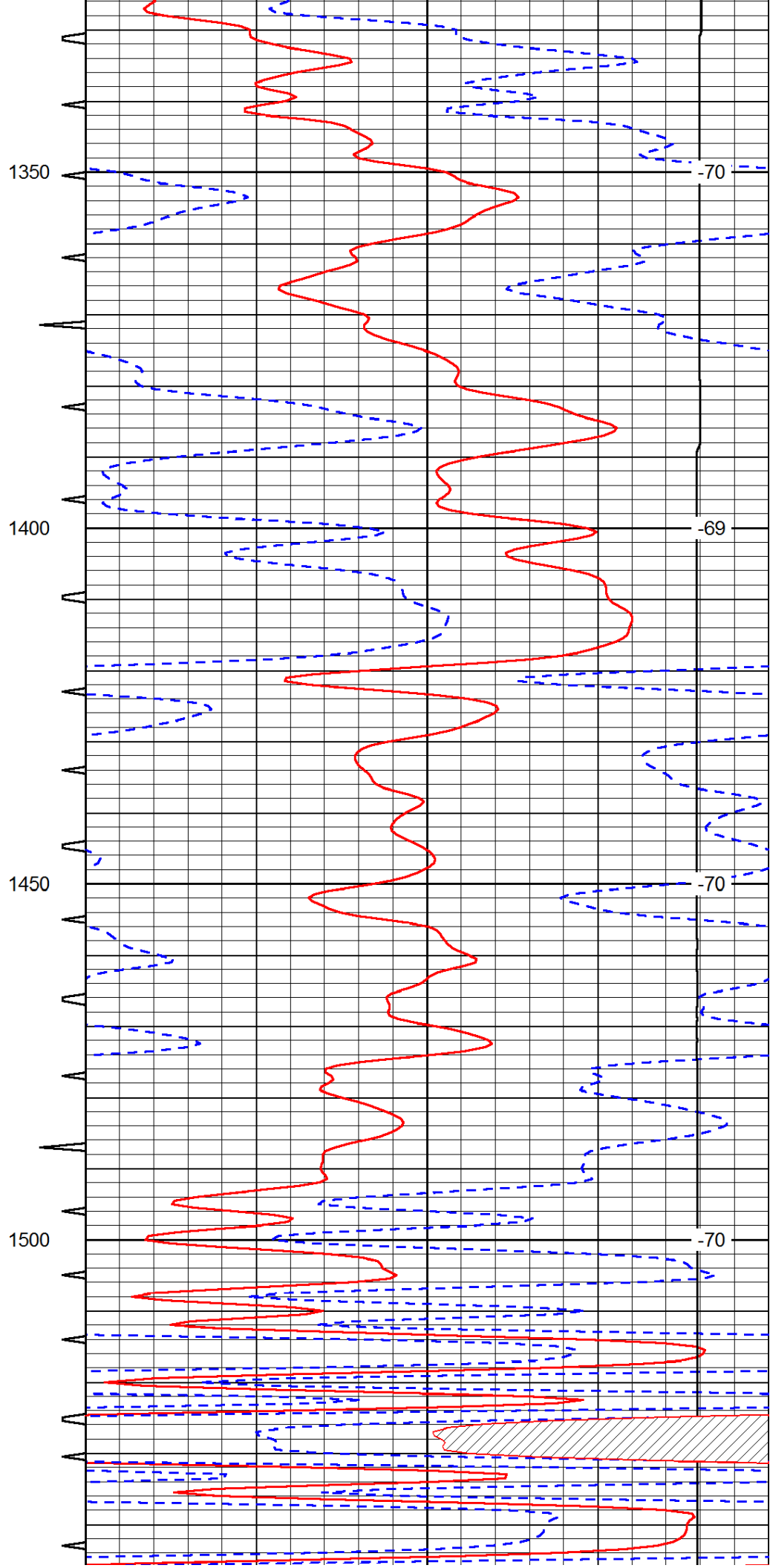
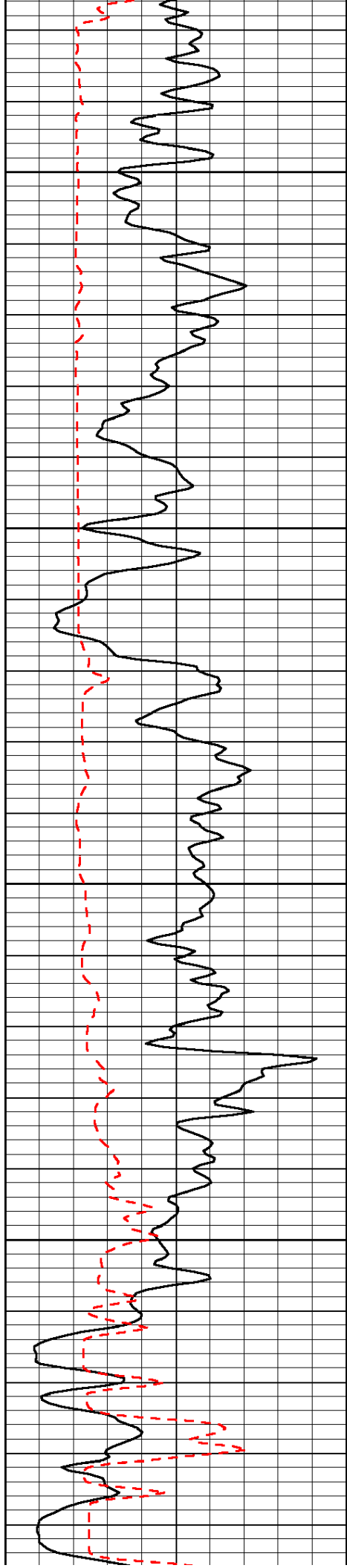


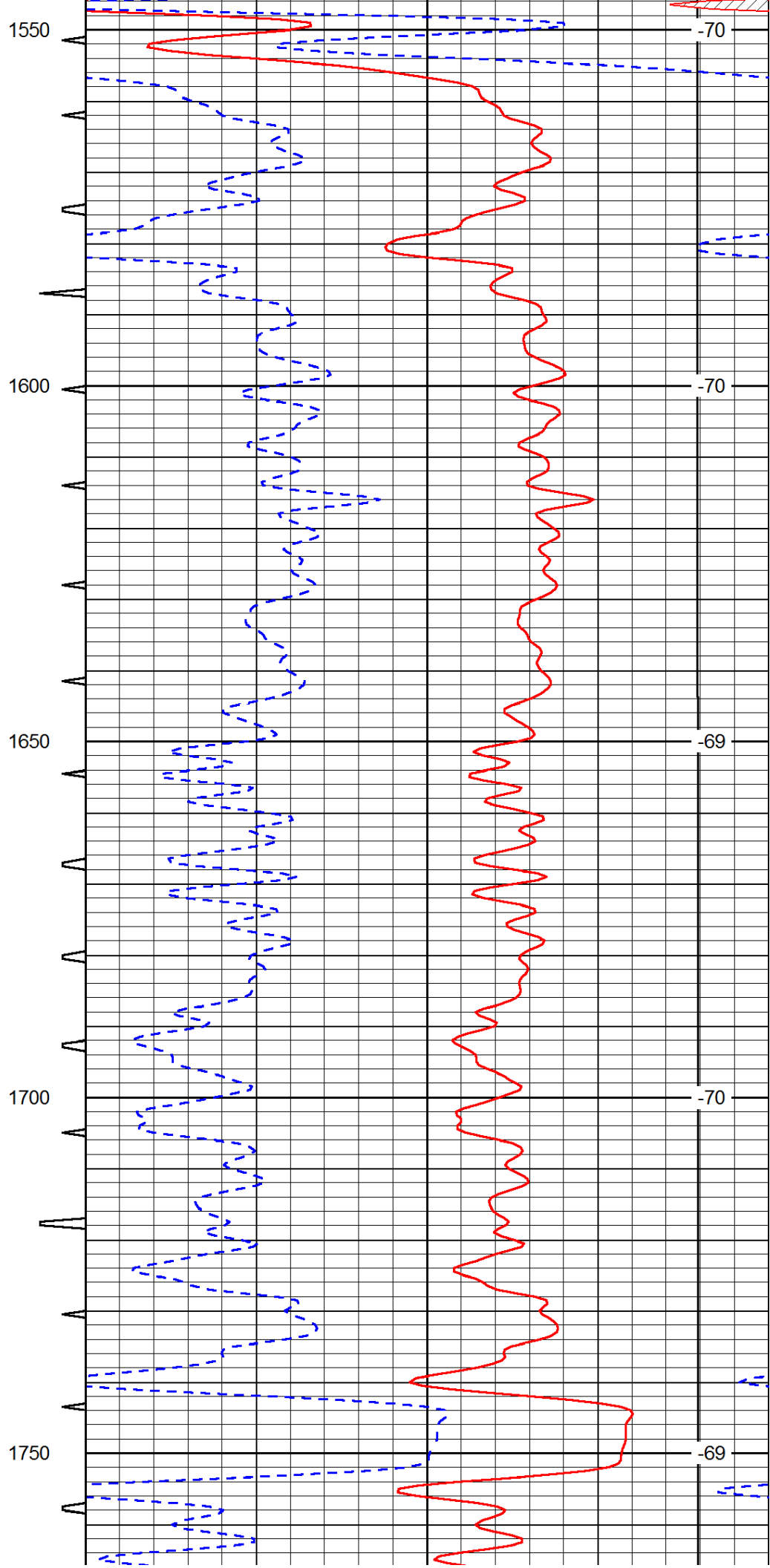
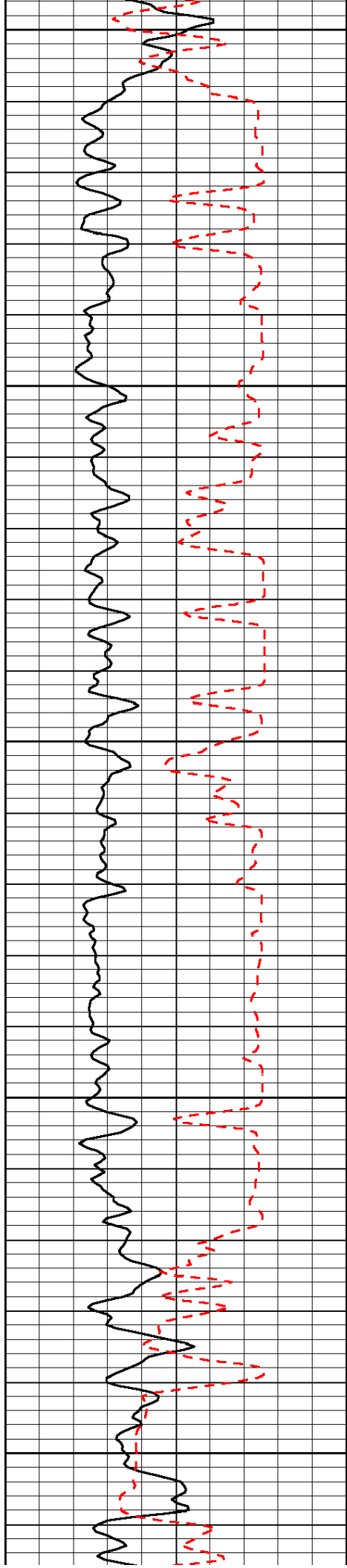


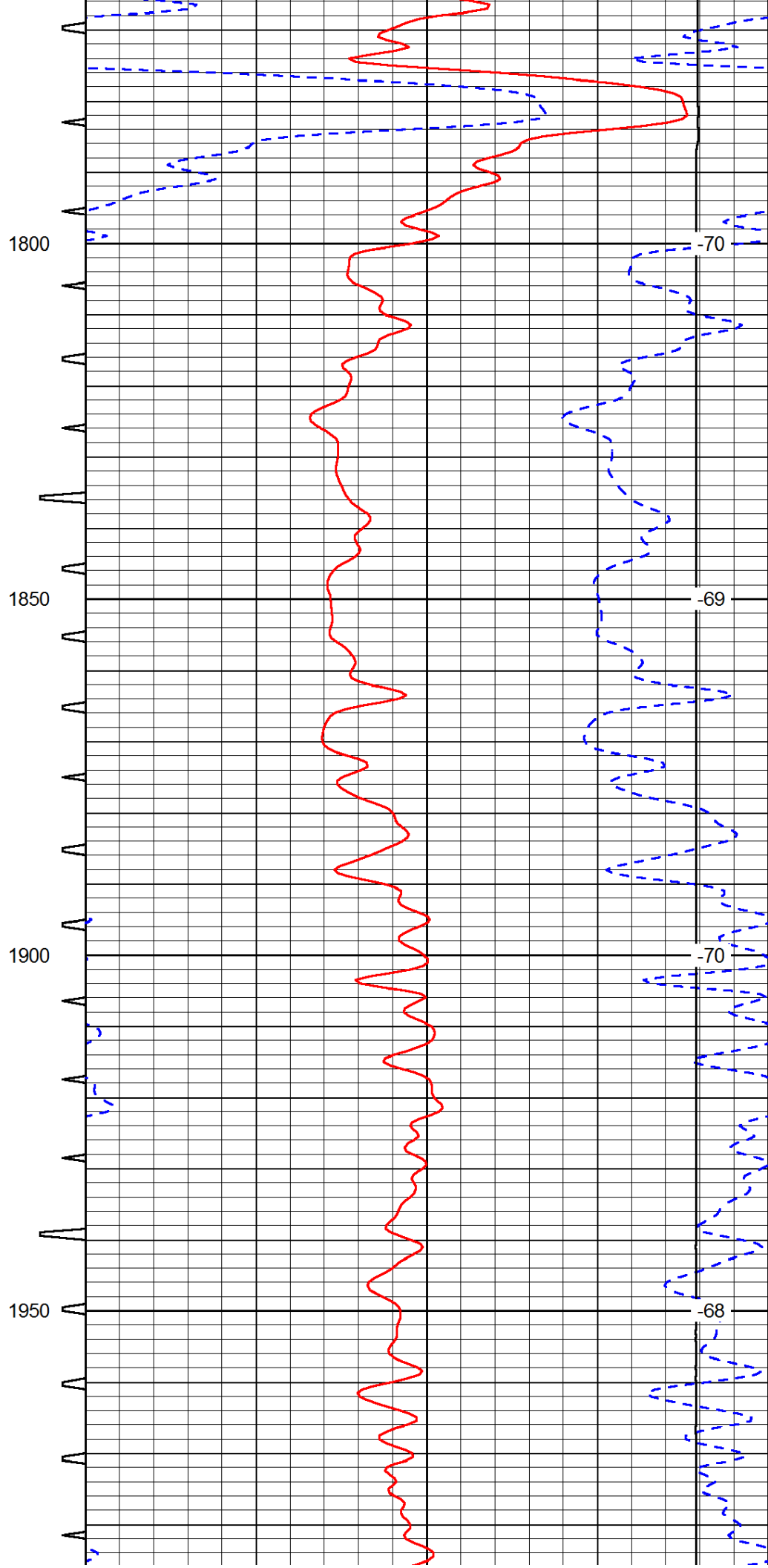
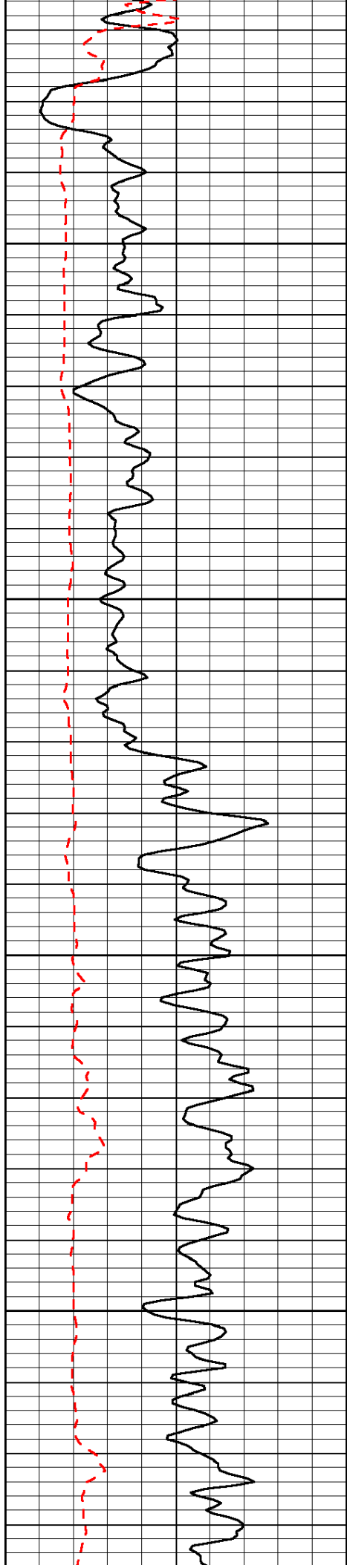


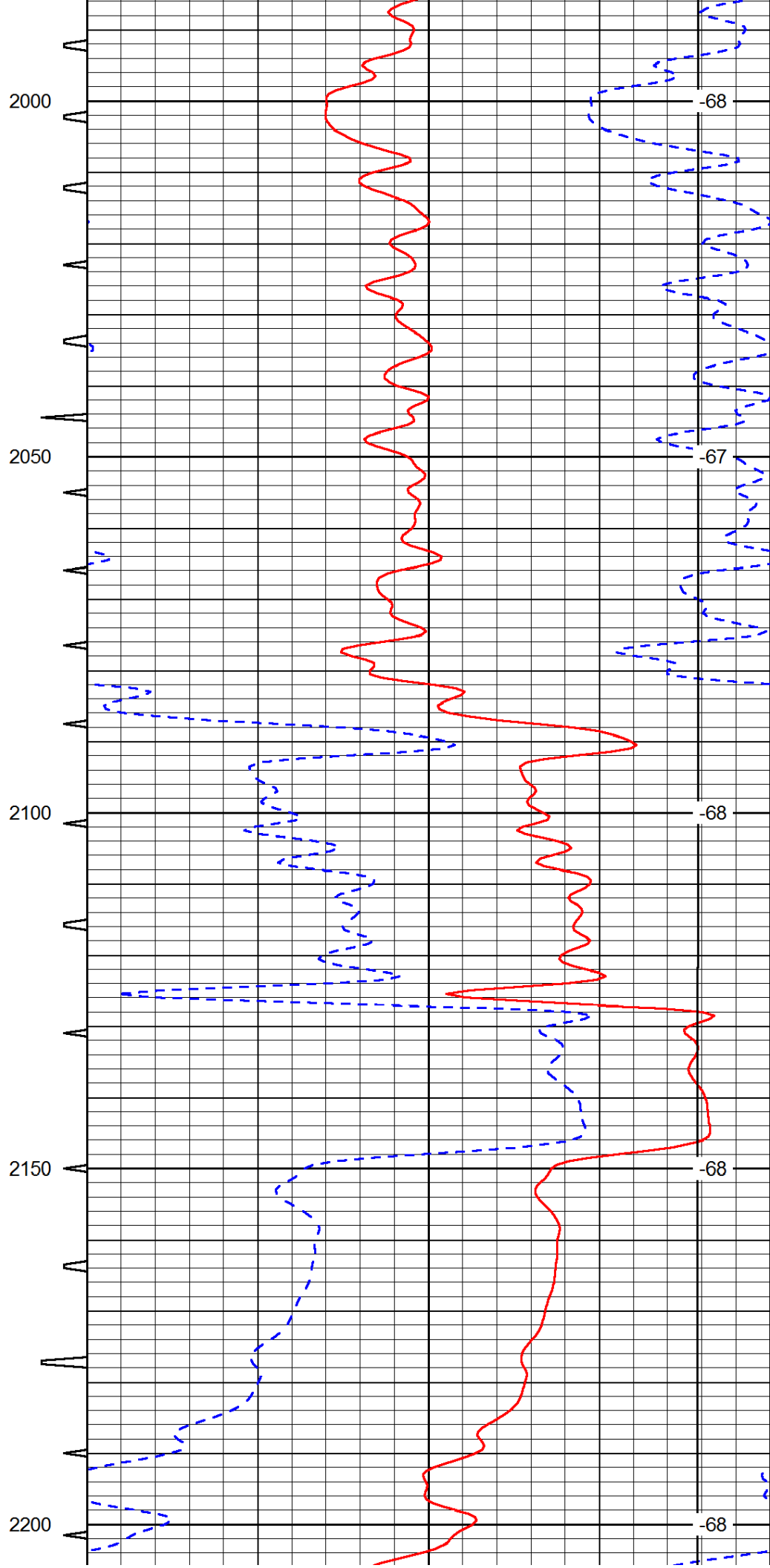
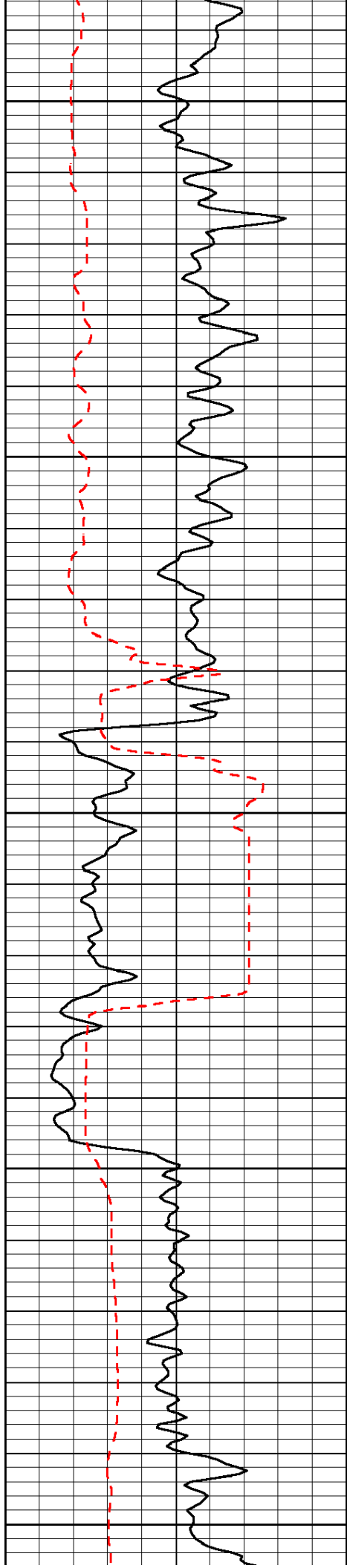


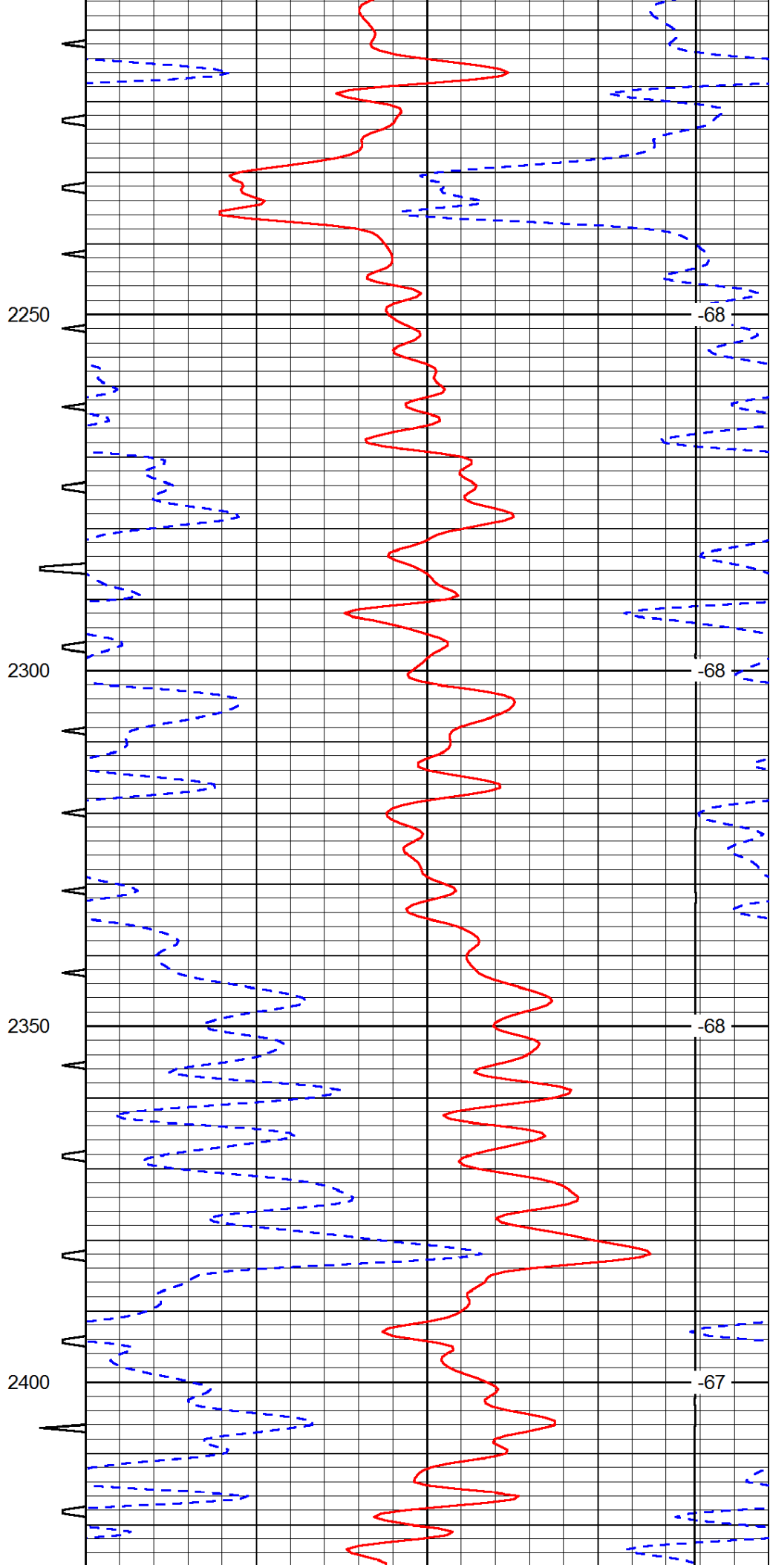
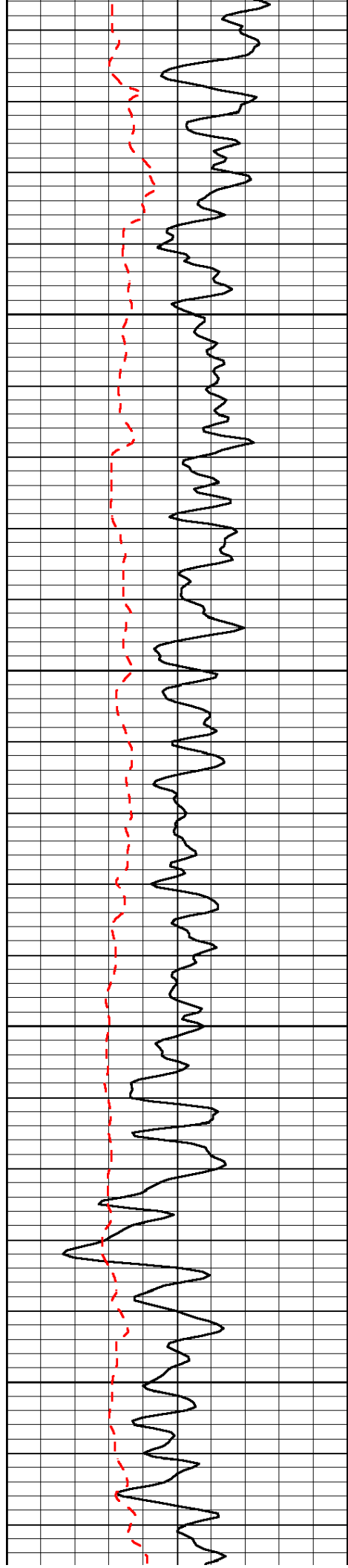


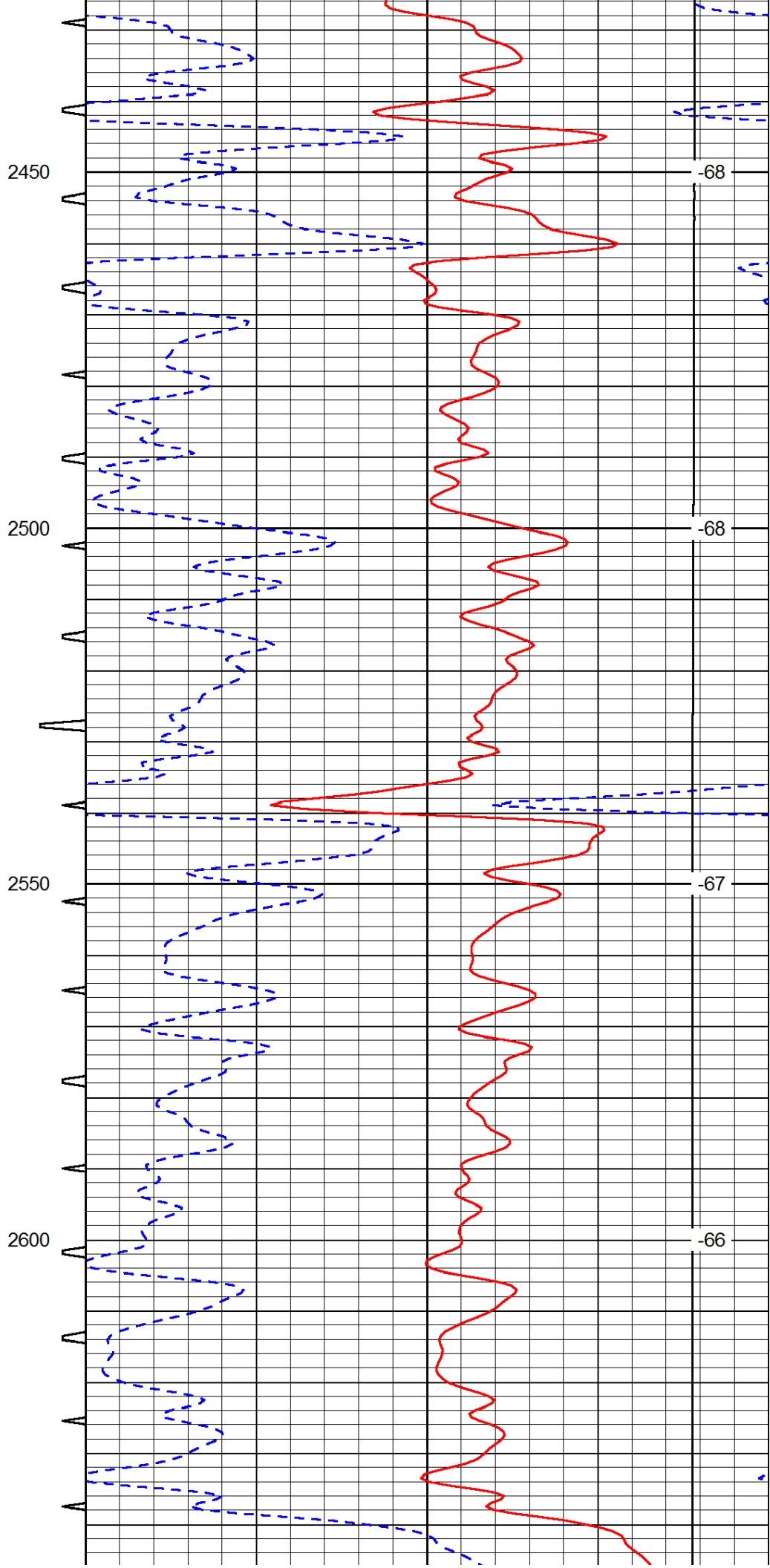
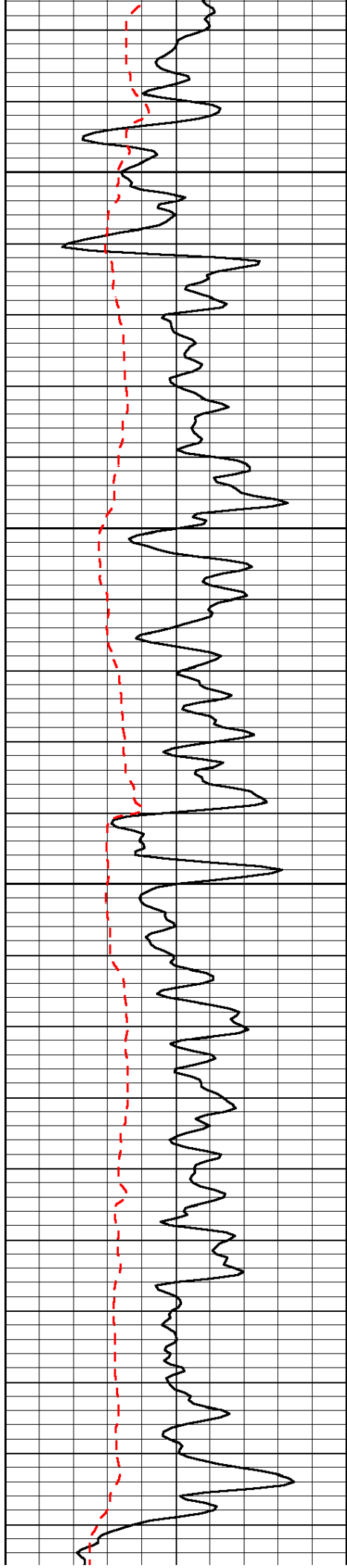


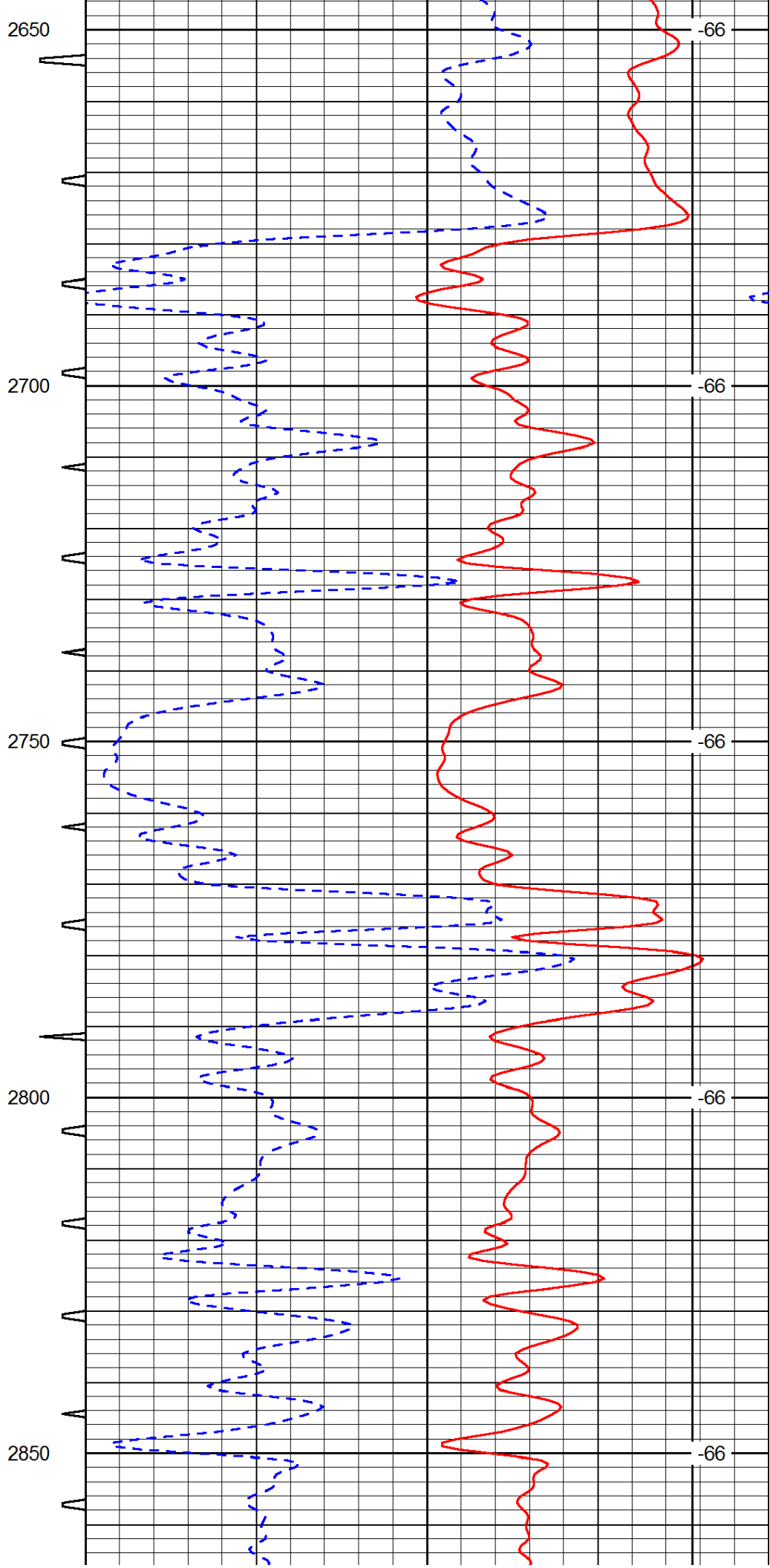
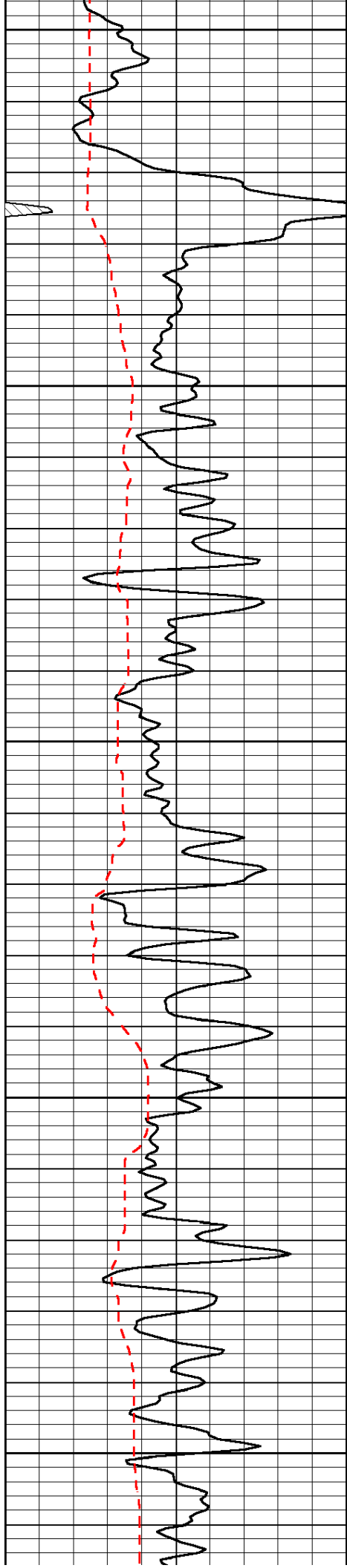


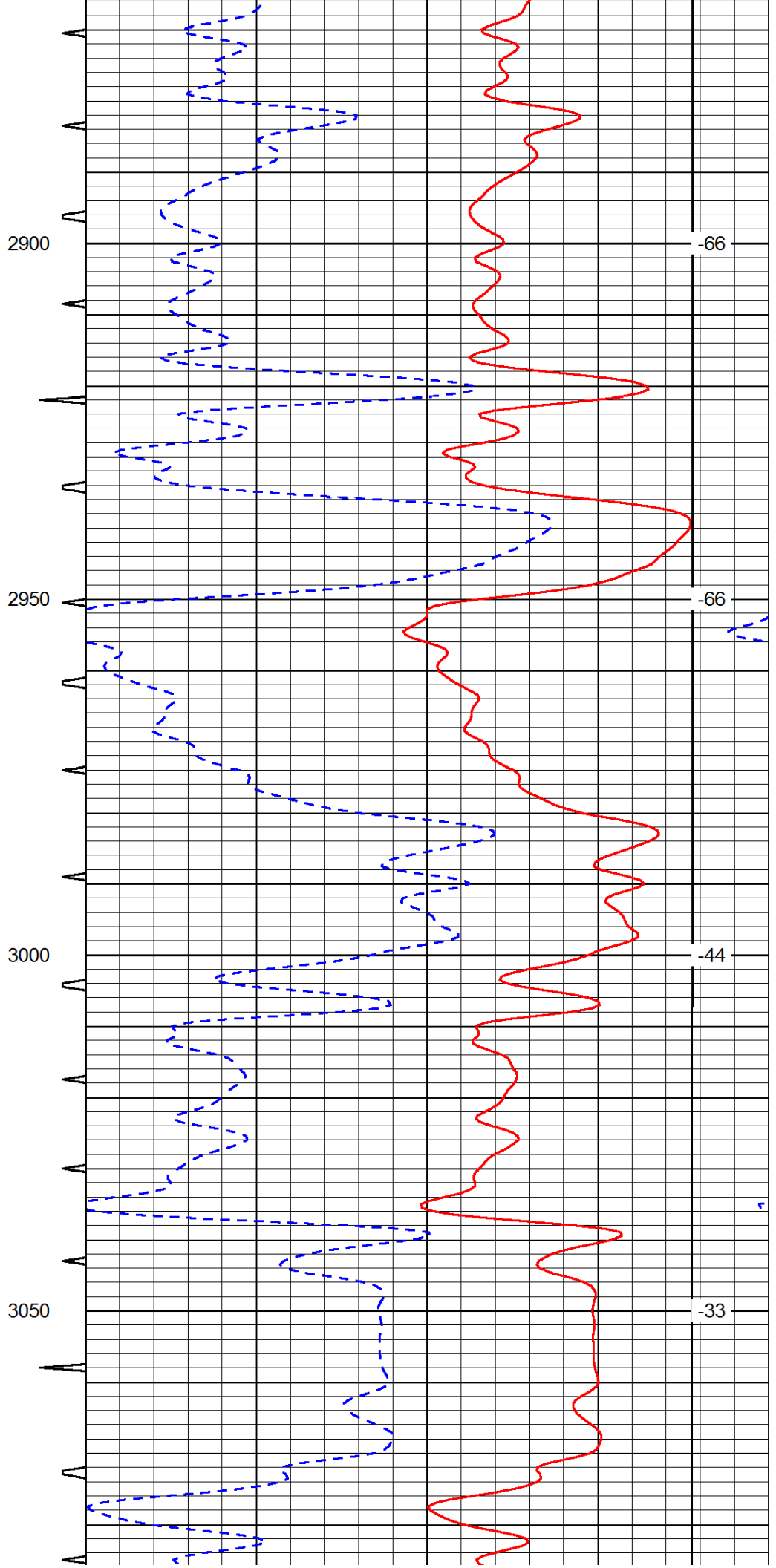
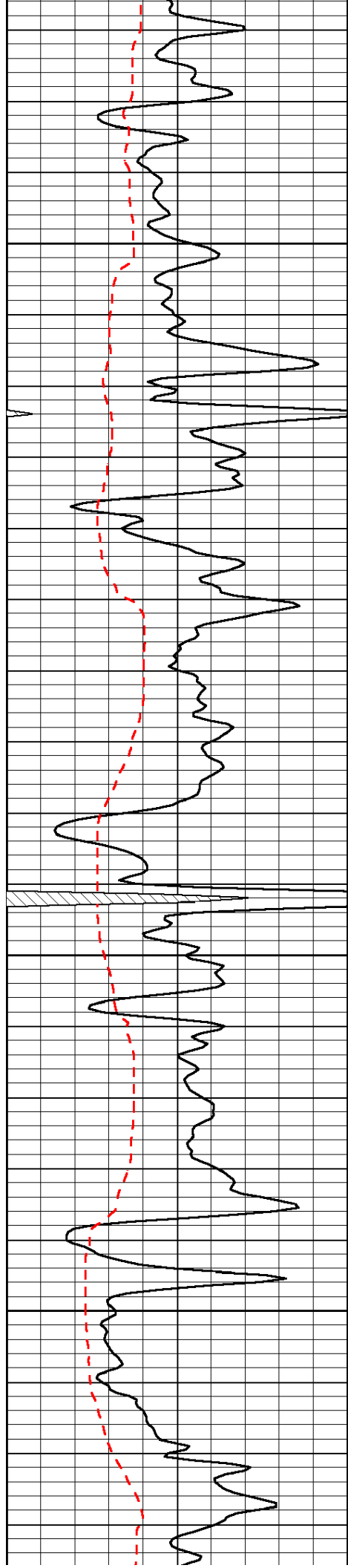


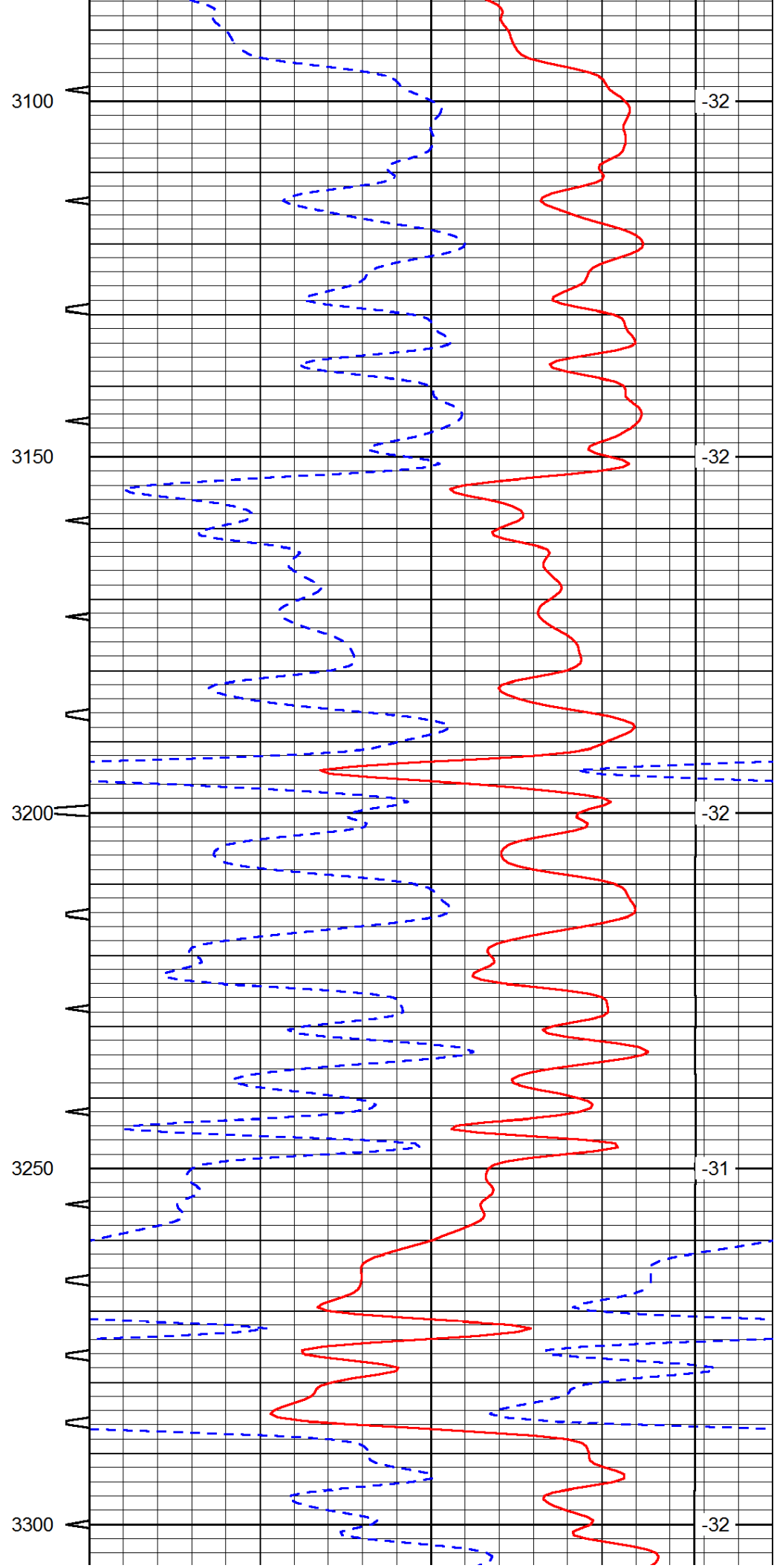
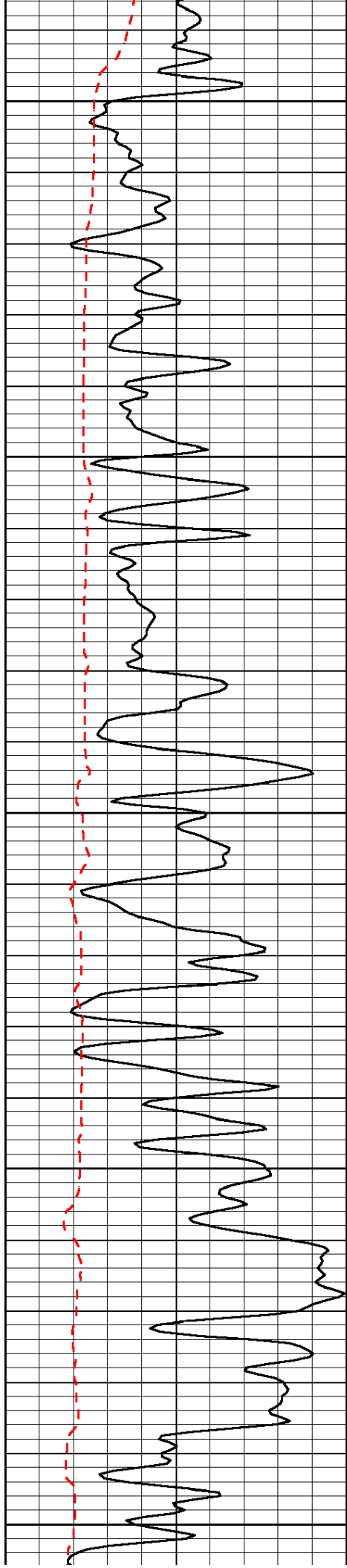


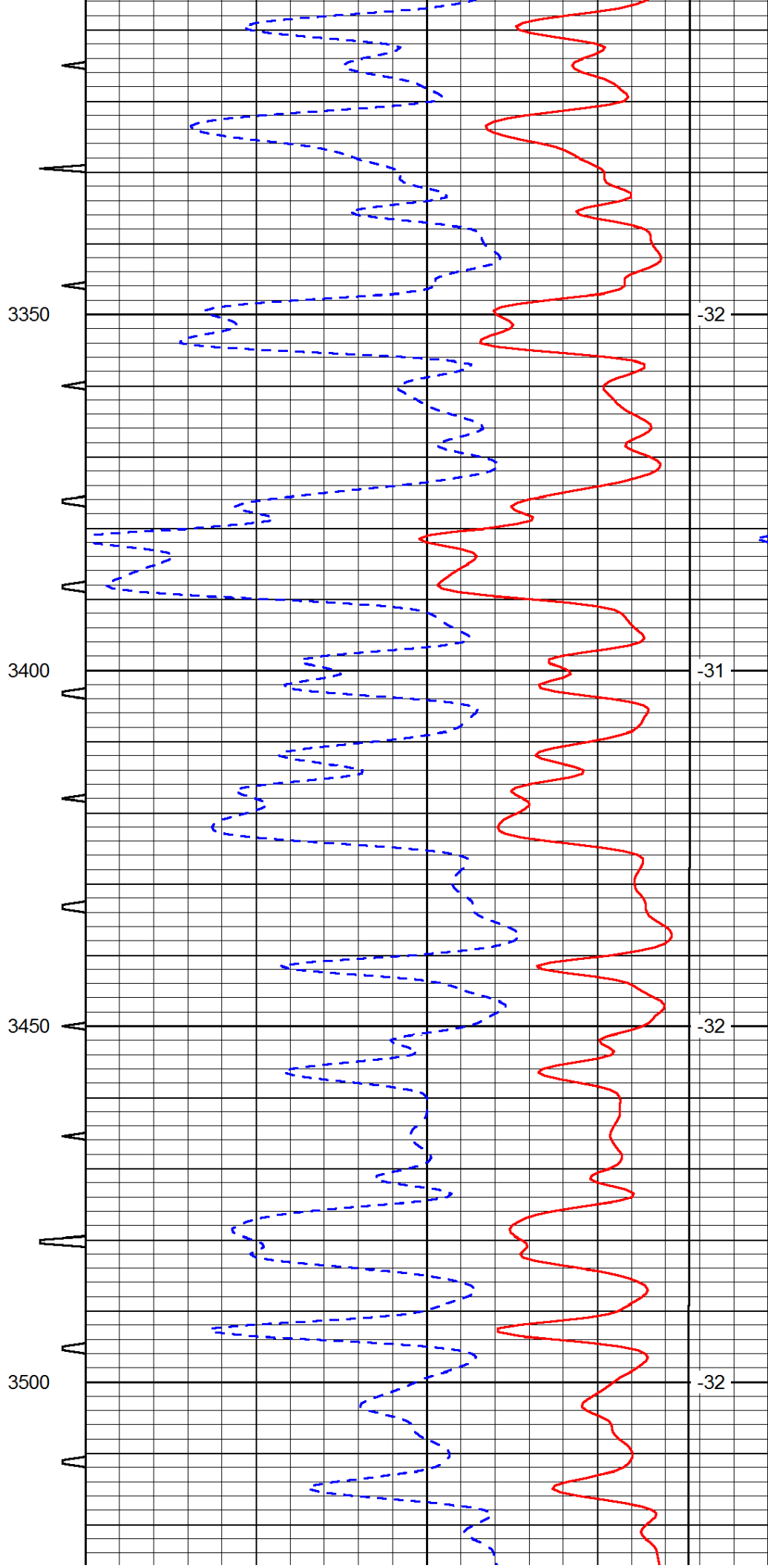
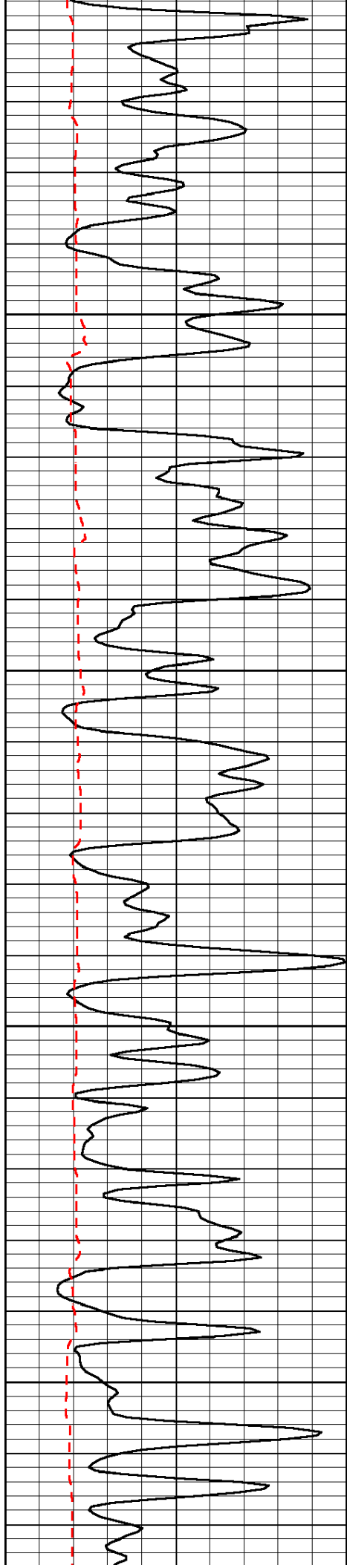


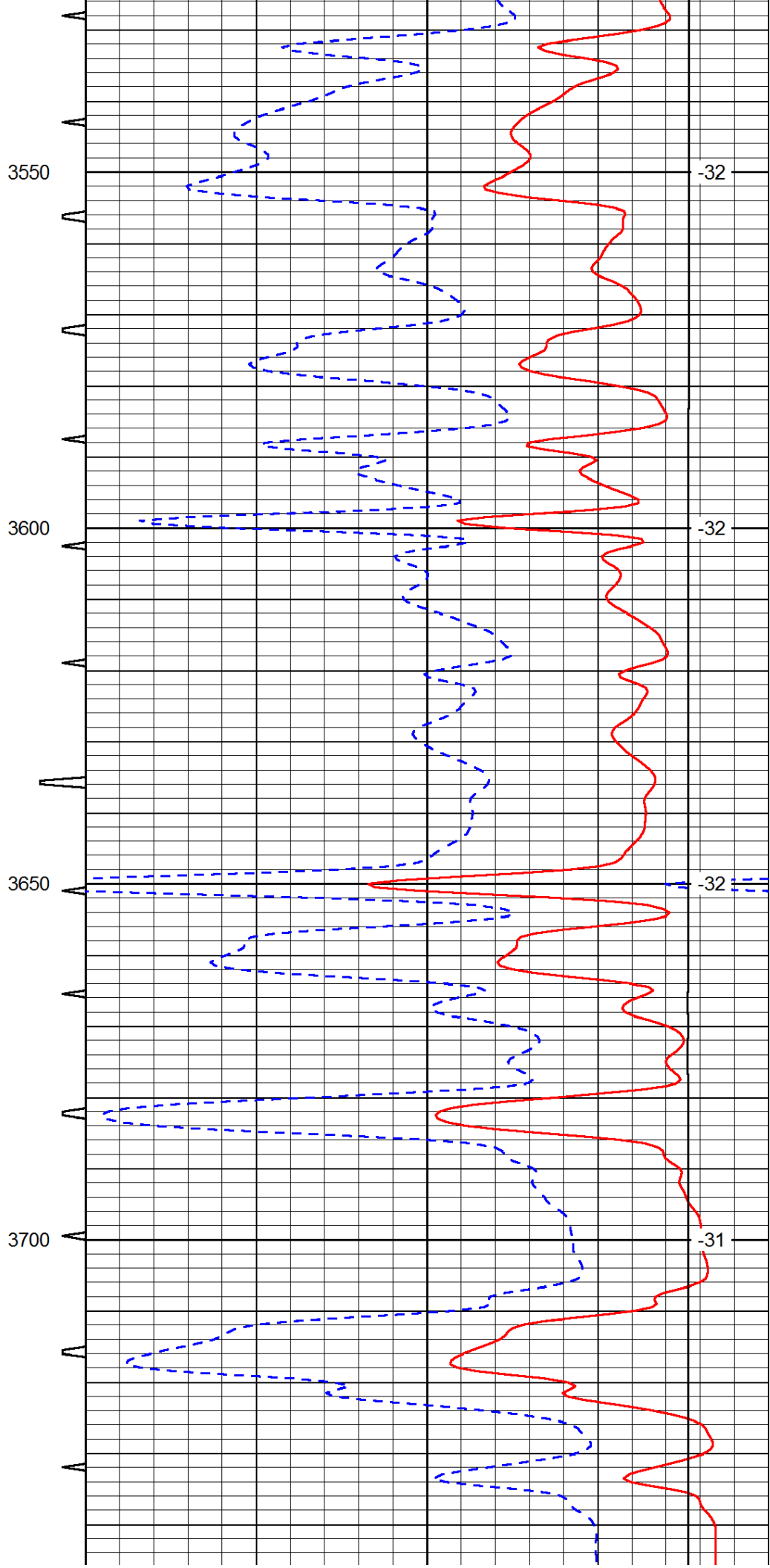
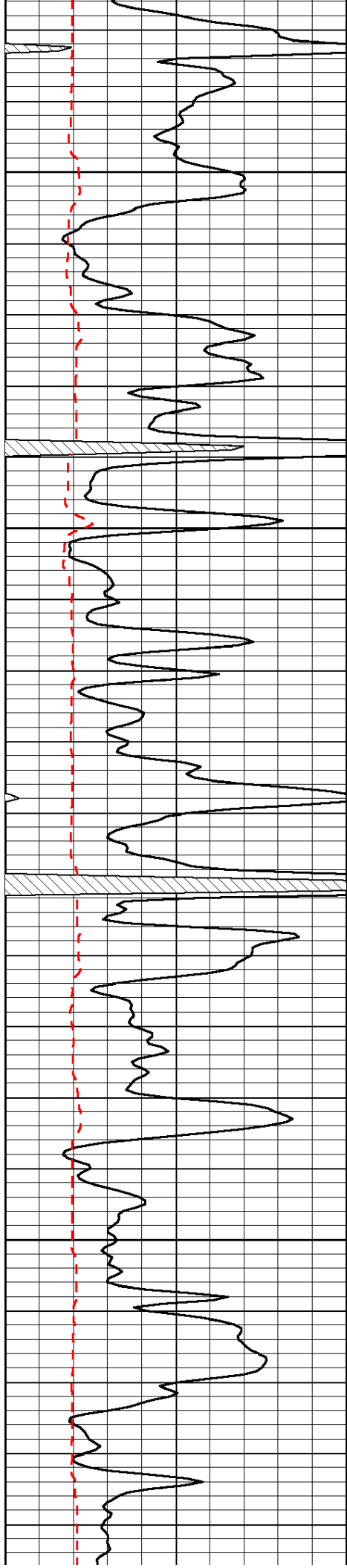


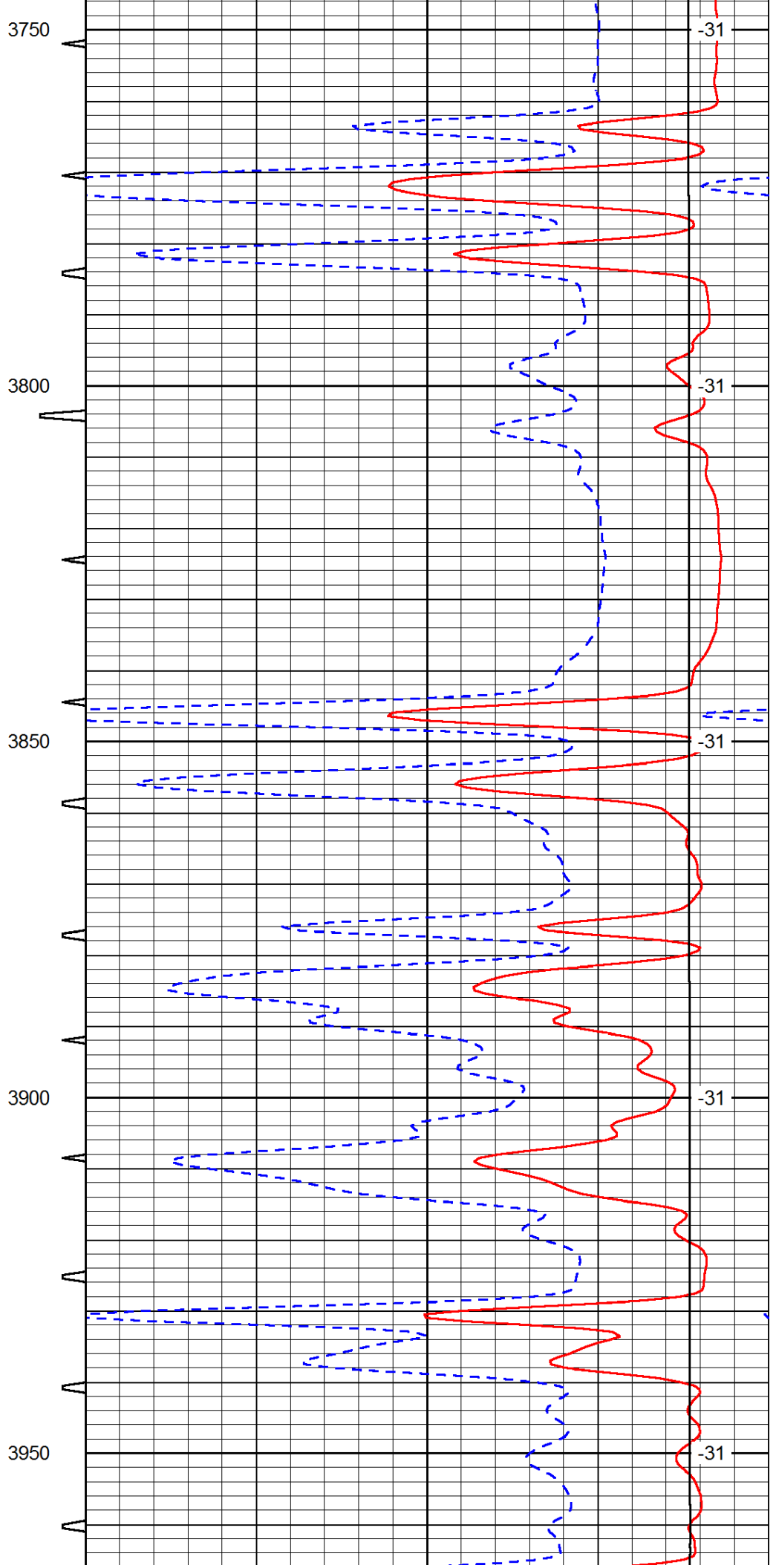
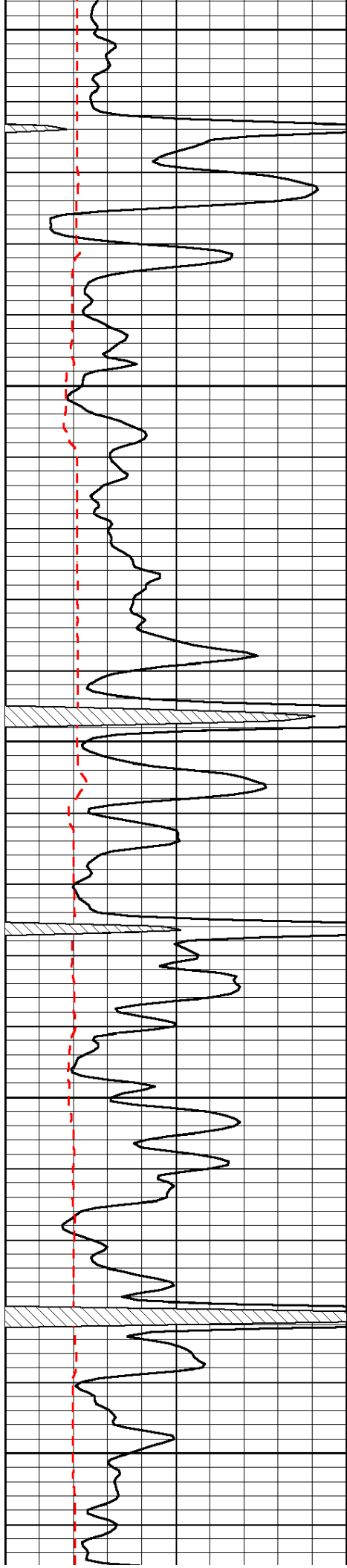


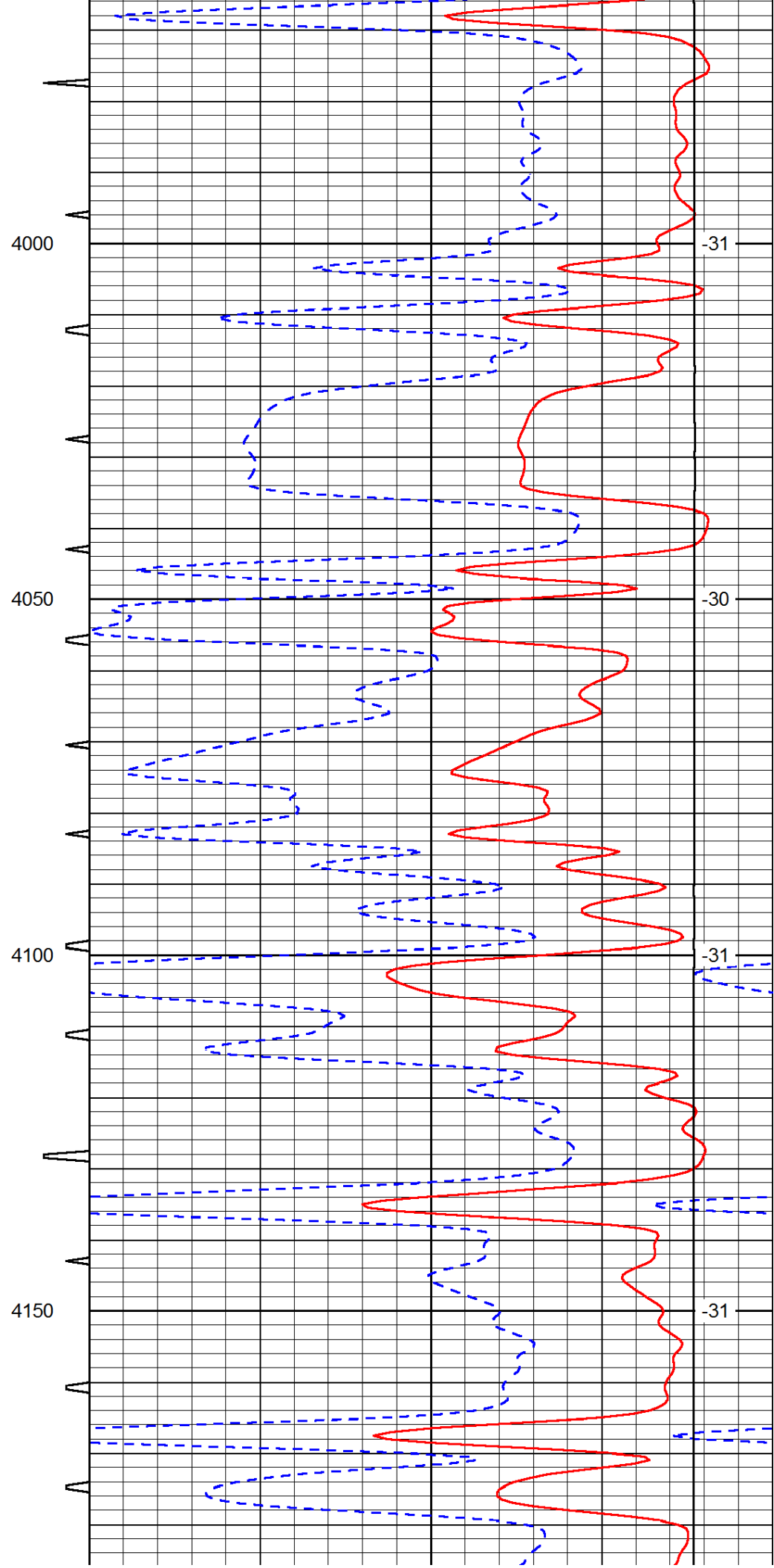
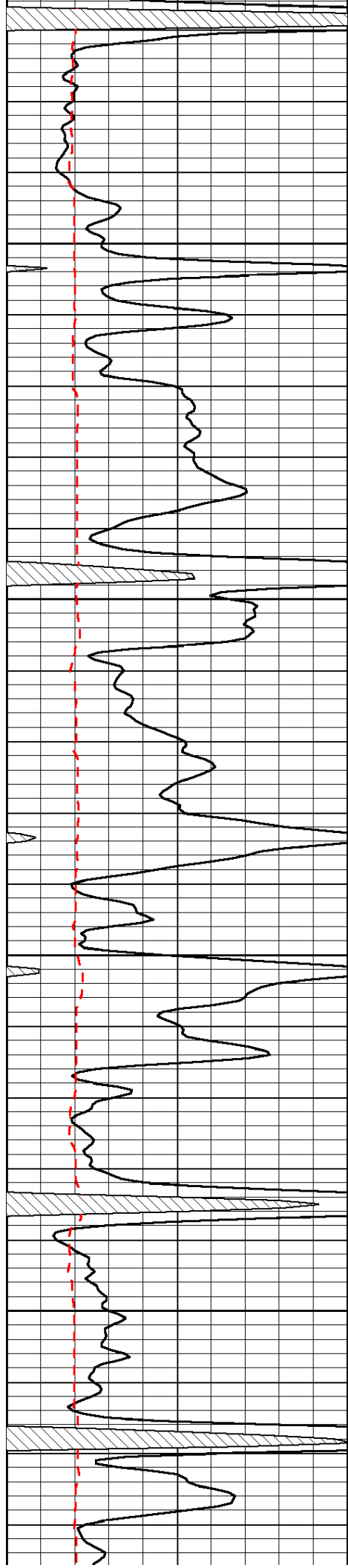


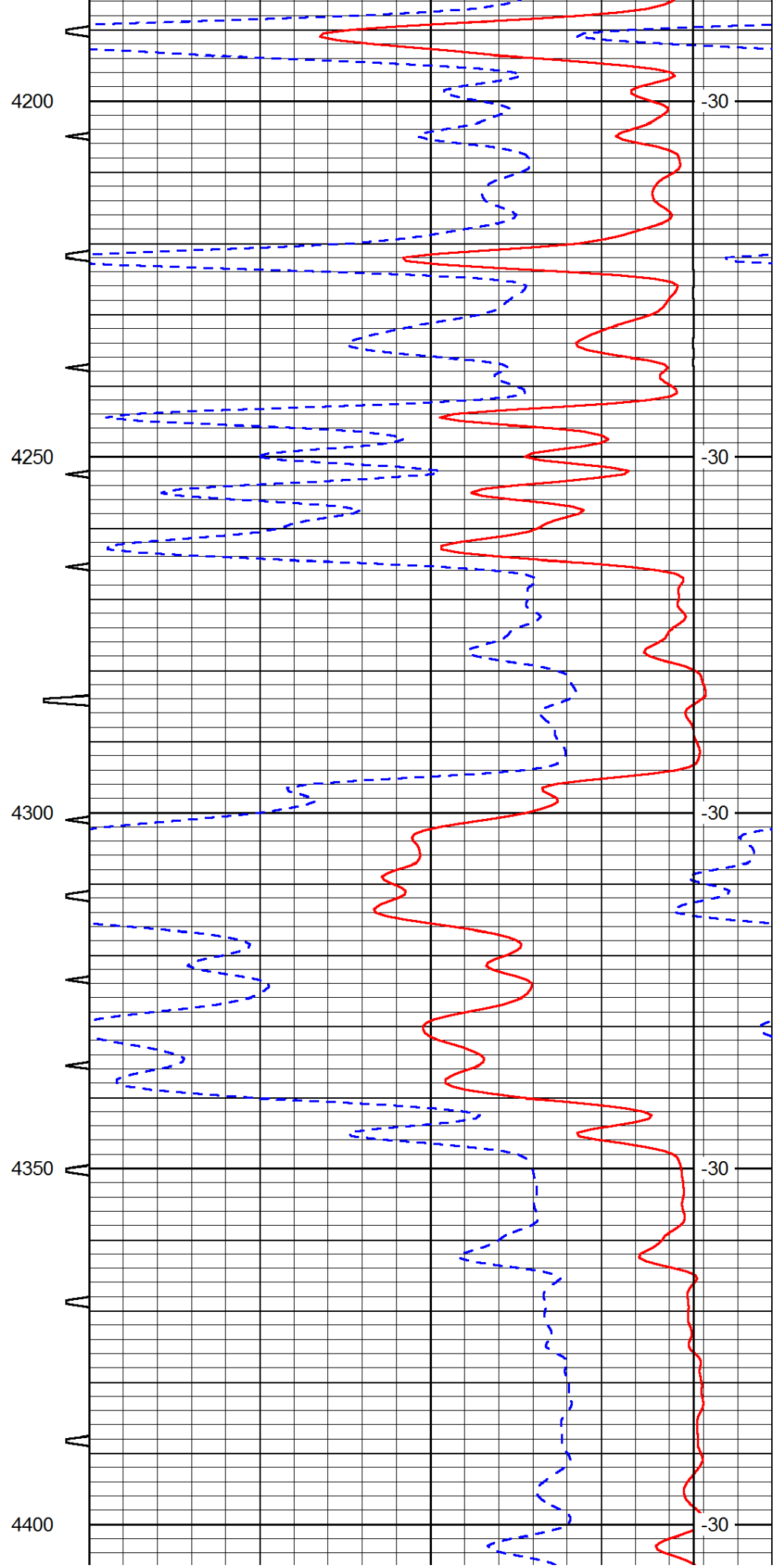
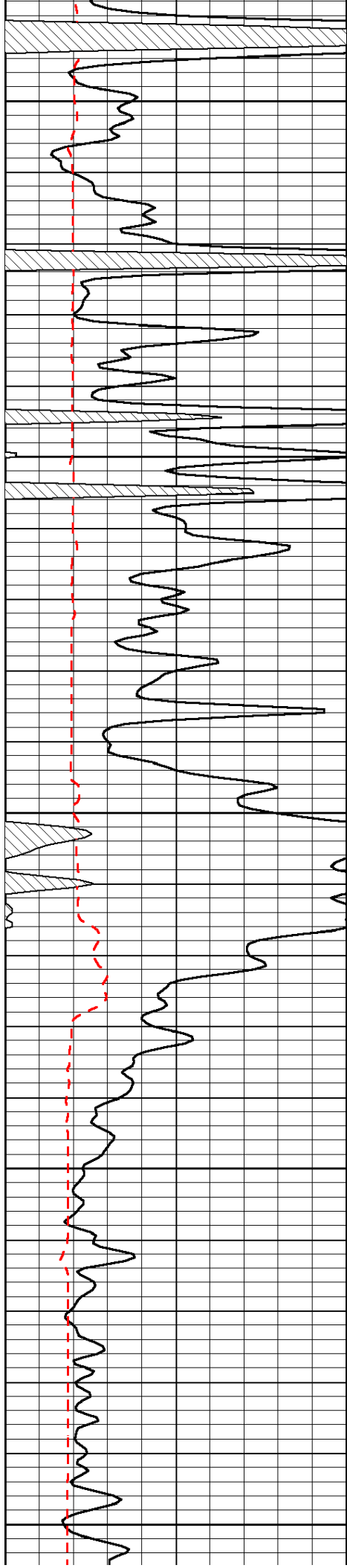


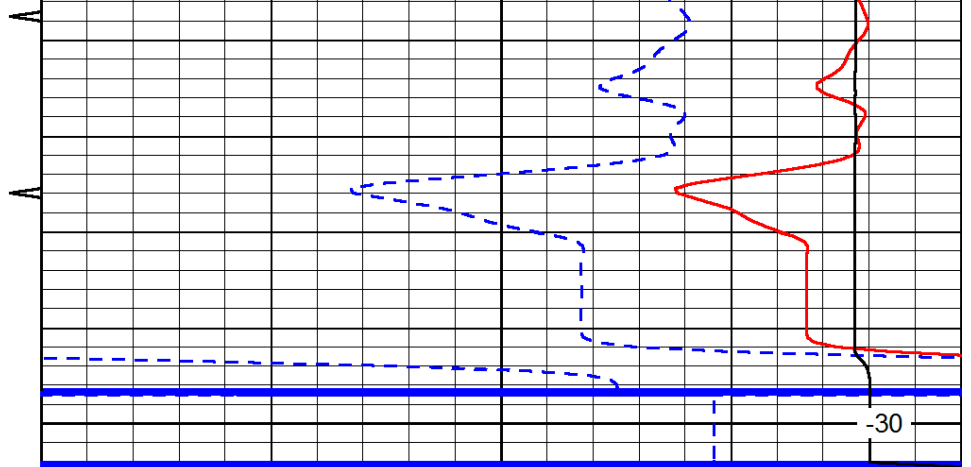
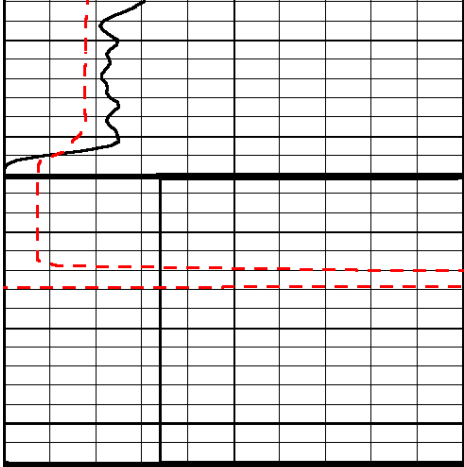












0	Gamma Ray	150	Sonic Int	140	Delta Time (usec/ft)	40
150	Gamma Ray	300	5	0	SPOR	-10
6	Caliper (GAPI)	16		15000	LTEN (lb)	0
						LSPD