



Pioneer Energy Services

Microresistivity Log

15-109-21,329-00-00

API No.

Company **Black Tea Oil, LLC**
 Well **Hibbert 'A' #3**
 Field **Bridges**
 County **Logan** State **Kansas**

Location **1855' FNL & 764' FEL**
 Sec: **27** Twp: **14S** Rge: **32W**

Other Services
 CNL/CDL
 DIL/BHCS

Permanent Datum **Ground Level** Elevation **2668**
 Log Measured From **Kelly Bushing** 12 Ft. Above Perm. Datum
 Drilling Measured From **Frontkelly Bushing**

Elevation
 K.B. 2680
 D.F. G.I.L. 2668

Date	10/5/2014
Run Number	Two
Depth Driller	4475
Depth Logger	4444
Bottom Logged Interval	4443
Top Log Interval	3000
Casing Driller	8.625 @ 264
Casing Logger	263
Bit Size	7.875
Type Fluid in Hole	Chemical
Salinity, ppm CL	7000
Density / Viscosity	9.1 50
pH / Fluid Loss	10.5 6.4
Source of Sample	Flowline
Rm @ Meas. Temp	0.35 @ 68
Rmf @ Meas. Temp	0.26 @ 68
Rmc @ Meas. Temp	0.47 @ 68
Source of Rmf / Rmc	Charts
Rm @ BHT	0.20 @ 121
Operating Rig Time	5 Hours
Max Rec. Temp. F	121
Equipment Number	15
Location	Hays
Recorded By	D.Kerr
Witnessed By	Rich Thomasson

<<< Fold Here >>>

All interpretations are opinions based on inferences from electrical or other measurements and we cannot and do not guarantee the accuracy or correctness of any interpretation, and we shall not, except in the case of gross or willful negligence on our part, be liable or responsible for any loss, costs, damages, or expenses incurred or sustained by anyone resulting from any interpretation made by any of our officers, agents or employees. These interpretations are also subject to our general terms and conditions set out in our current Price Schedule.

Comments

Thank you for using Pioneer Energy Services
www.pioneeres.com
 785 625 3858

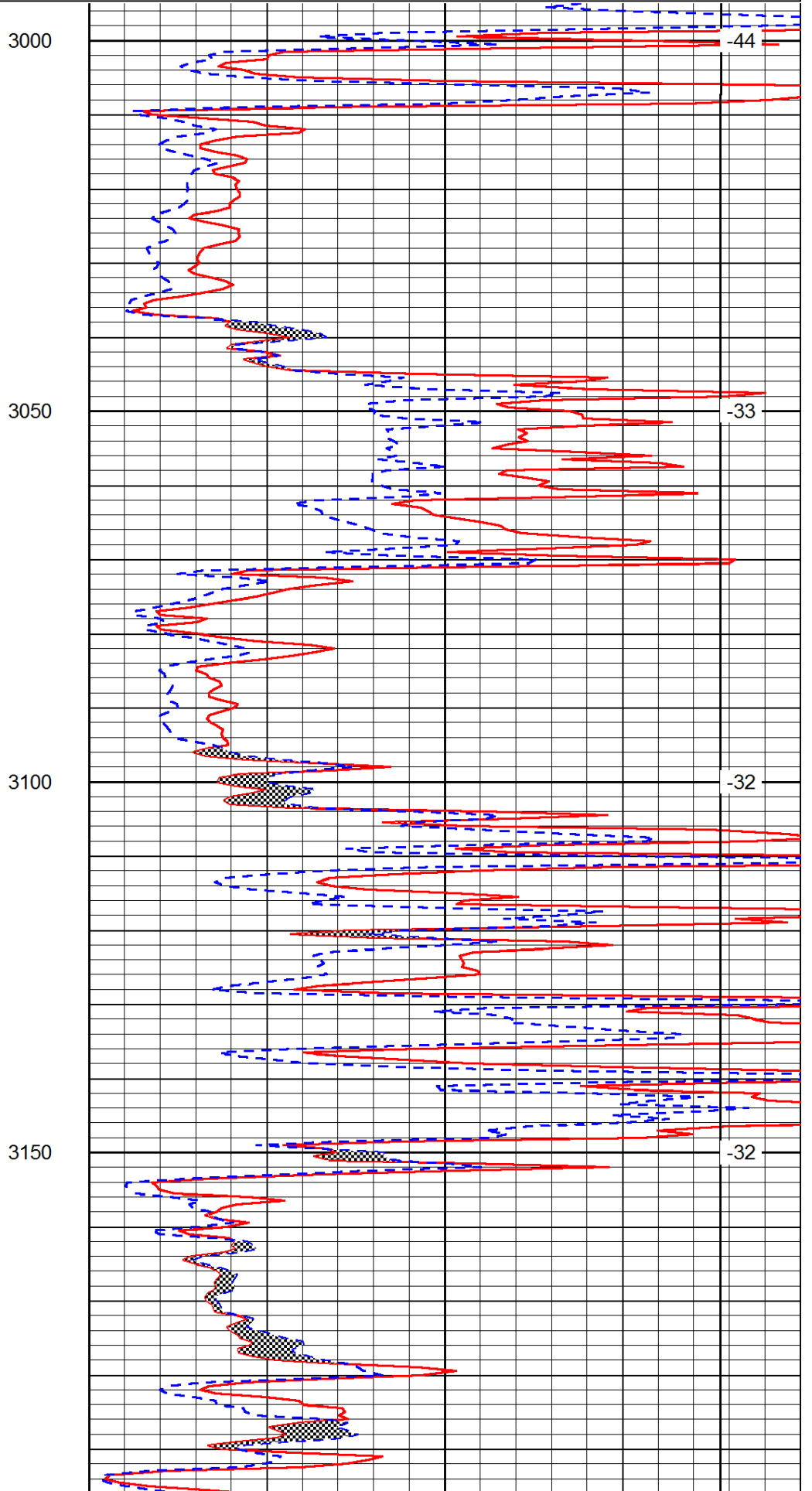
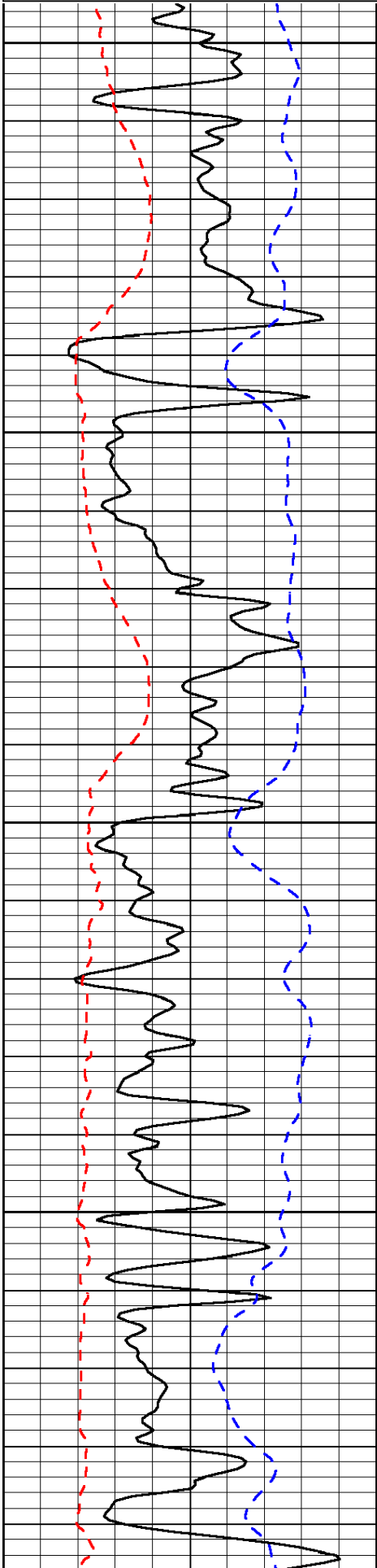
Oakley KS, 22 South, East Into

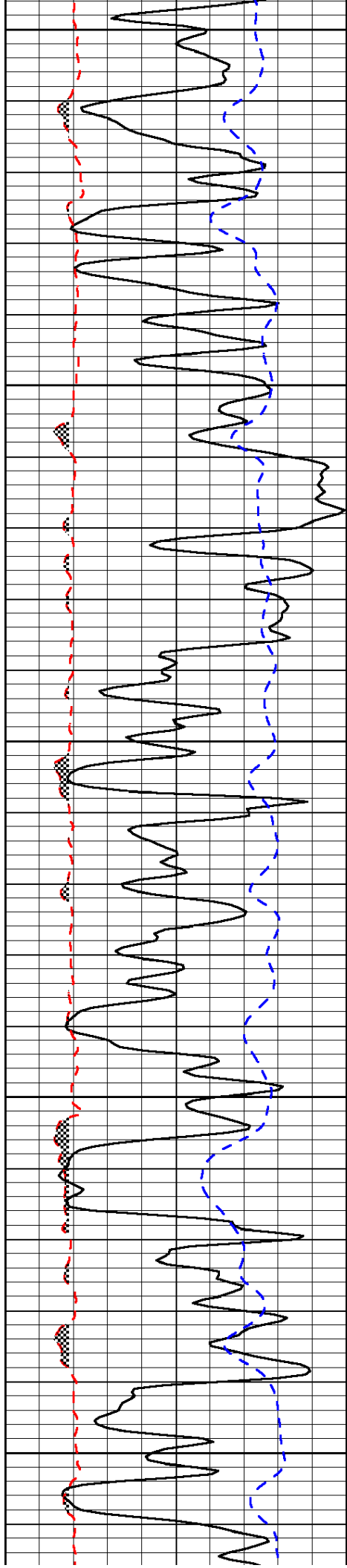
Database File: c:\warrior\data\black tea_hibbert 'a' #3\blacktea_hibbert_a_3hd.db
 Dataset Pathname: DIL/btstk
 Presentation Format: micro
 Dataset Creation: Sun Oct 05 08:44:24 2014
 Charted by: Depth in Feet scaled 1:240

0	Gamma Ray	150
6	Micro Log Caliper (GAPI)	16
-200	SP (mV)	0

0	Micro Inverse 1 X 1	40
0	Micro Normal 2"	40
15000	Line Weight	0

LSPD





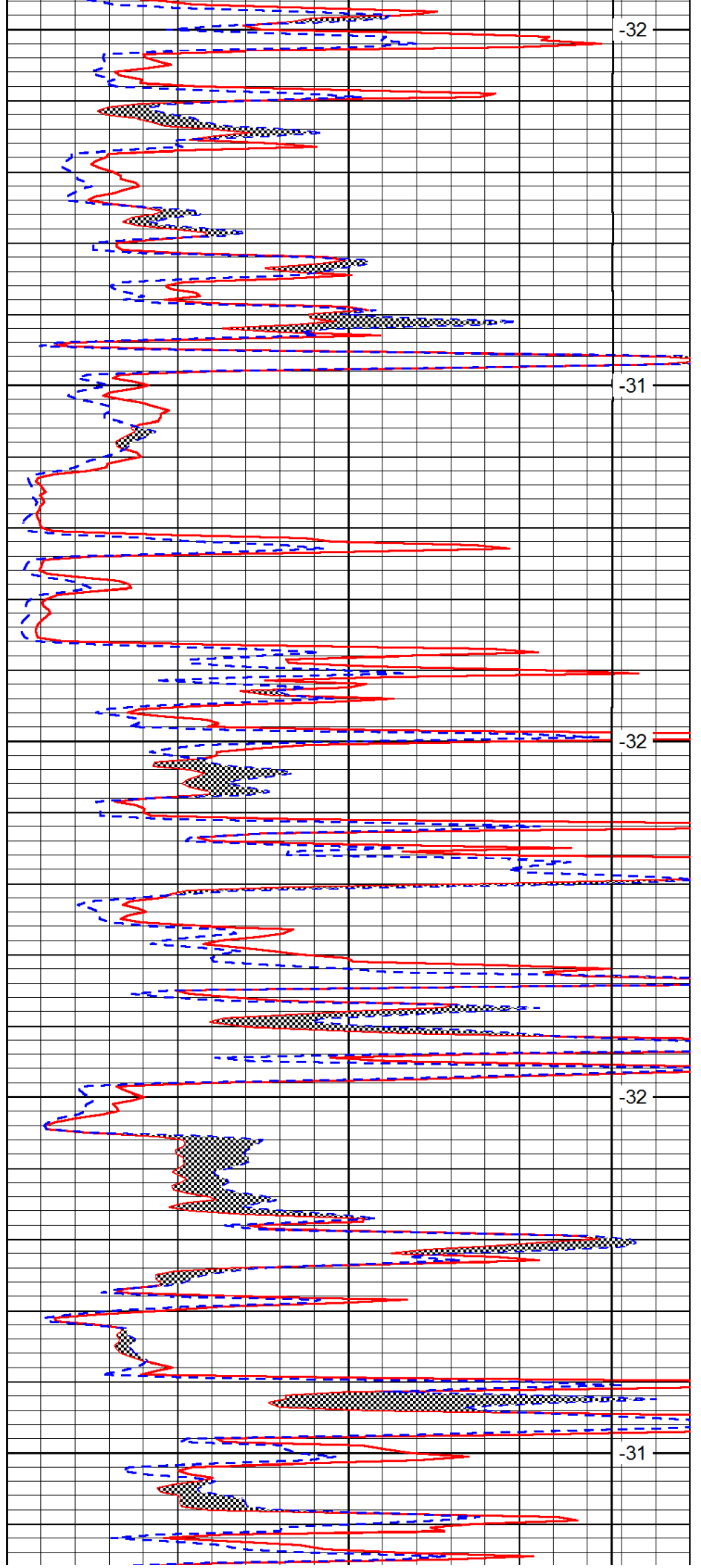
3200

3250

3300

3350

3400



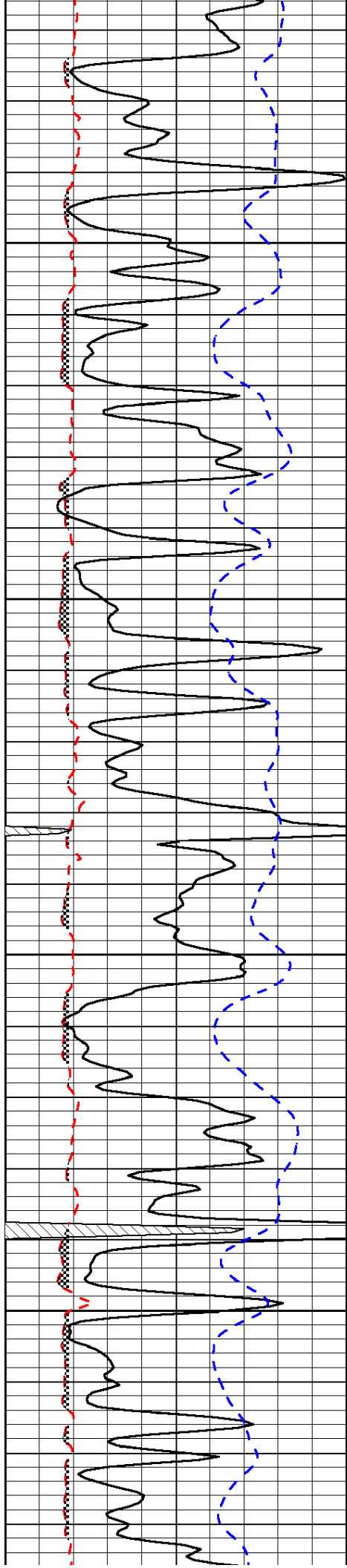
-32

-31

-32

-32

-31

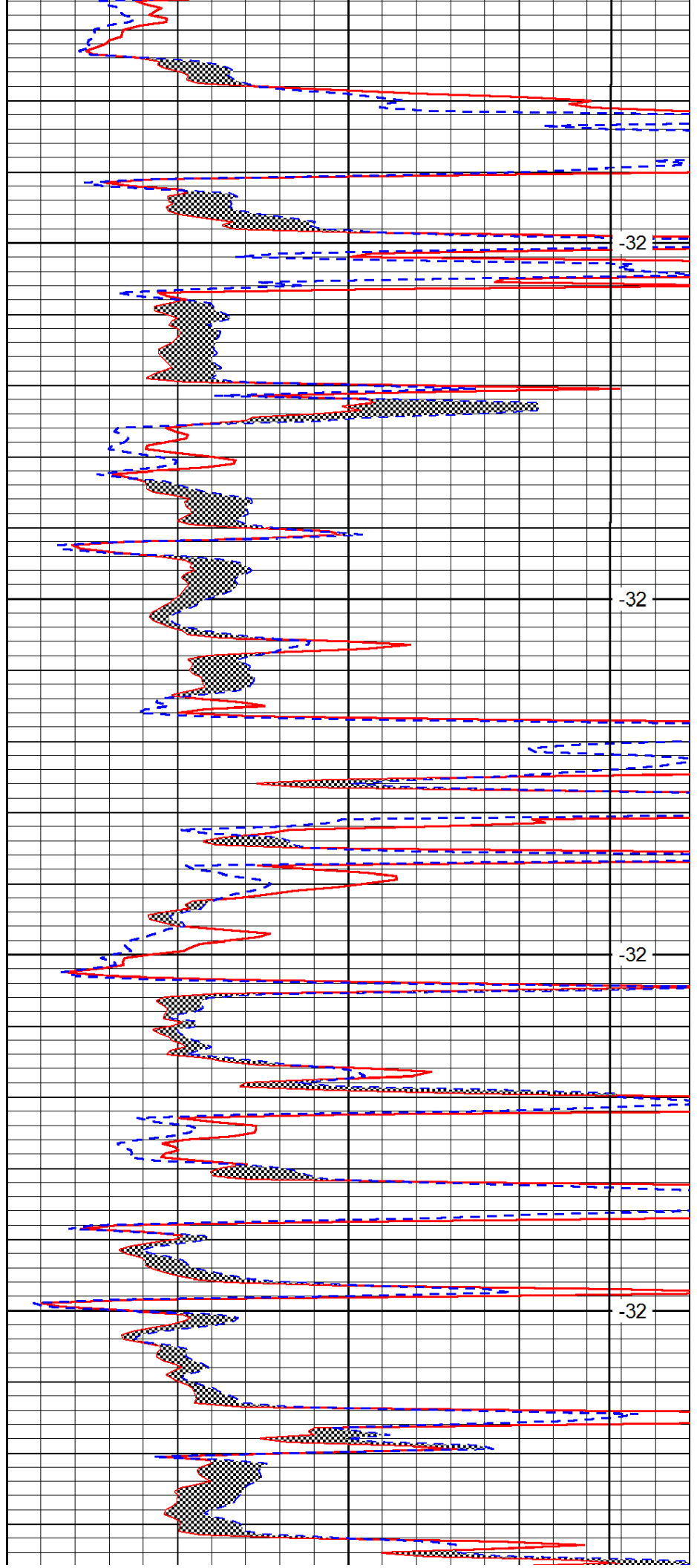


3450

3500

3550

3600

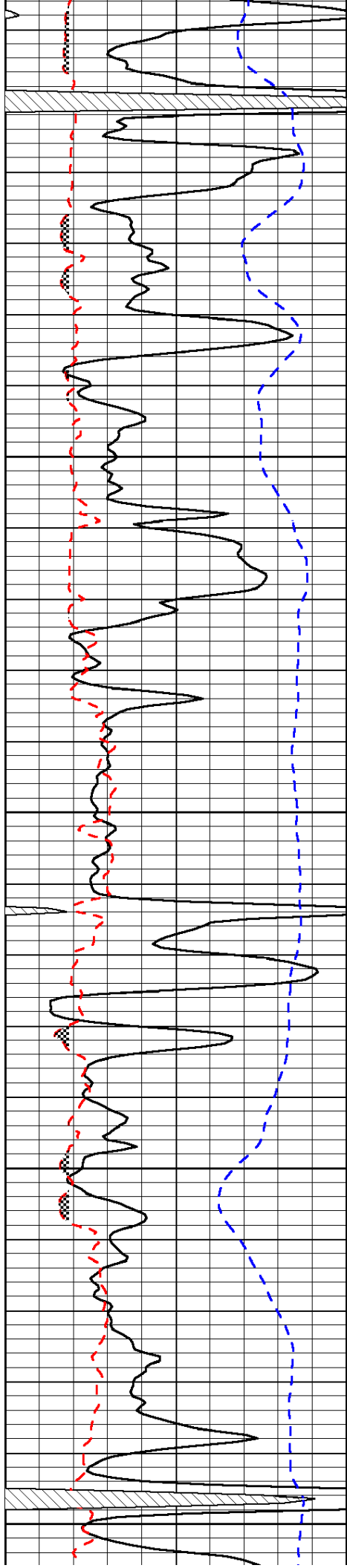


-32

-32

-32

-32



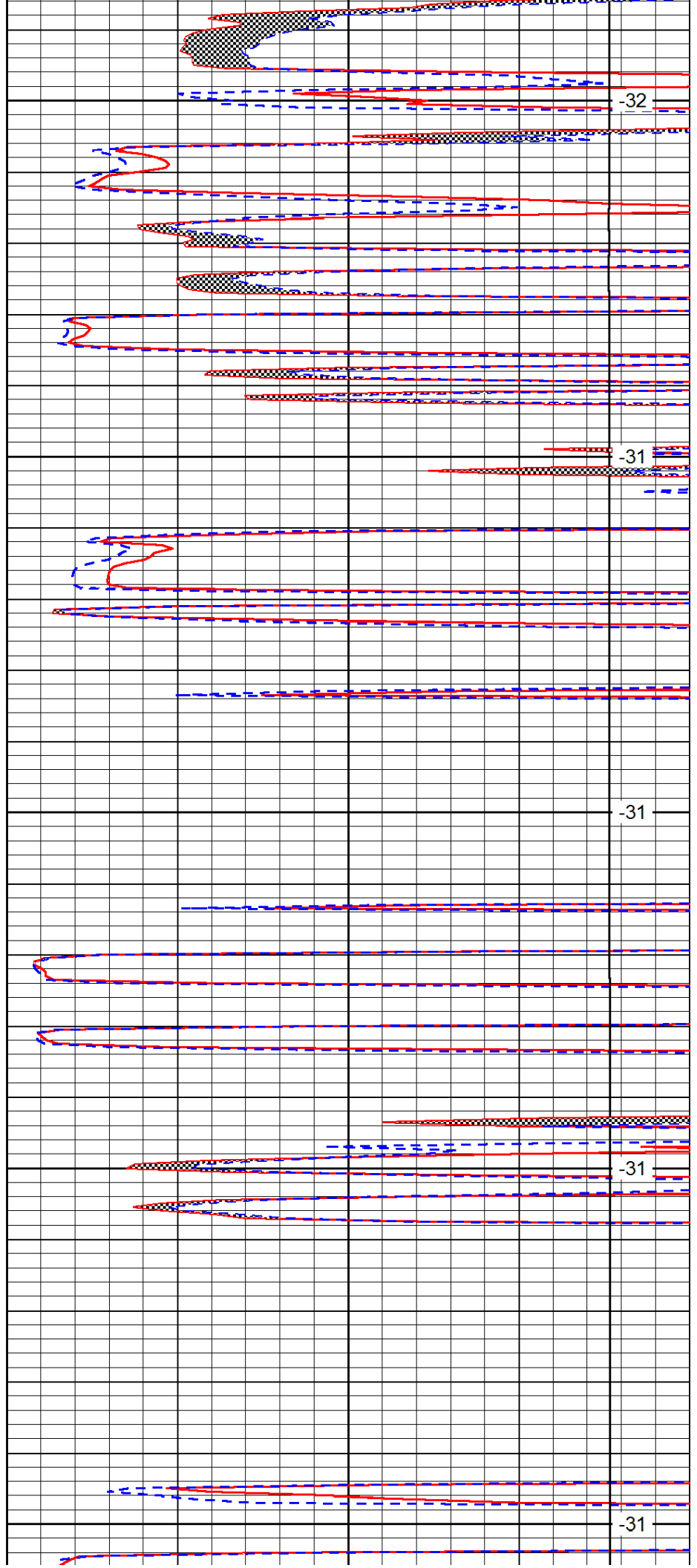
3650

3700

3750

3800

3850



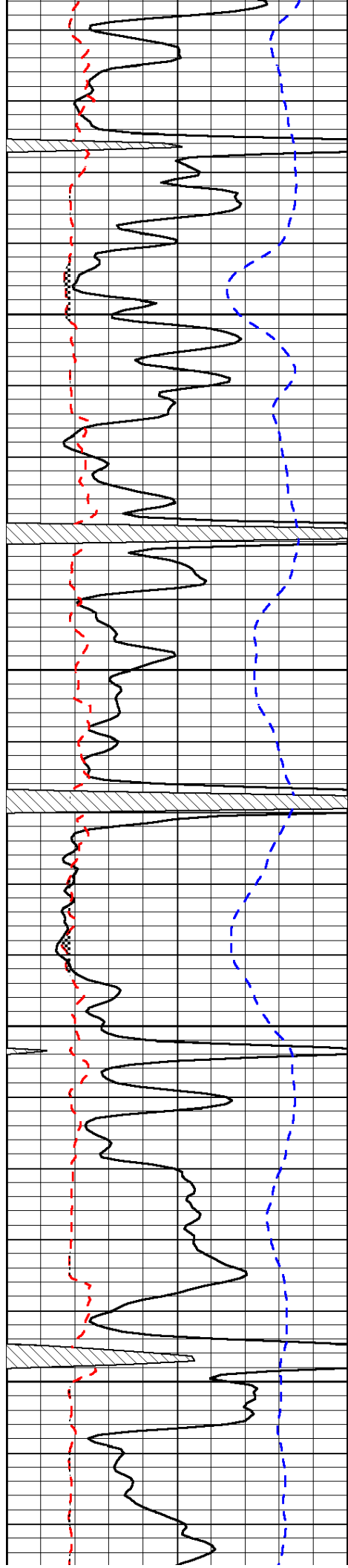
-32

-31

-31

-31

-31

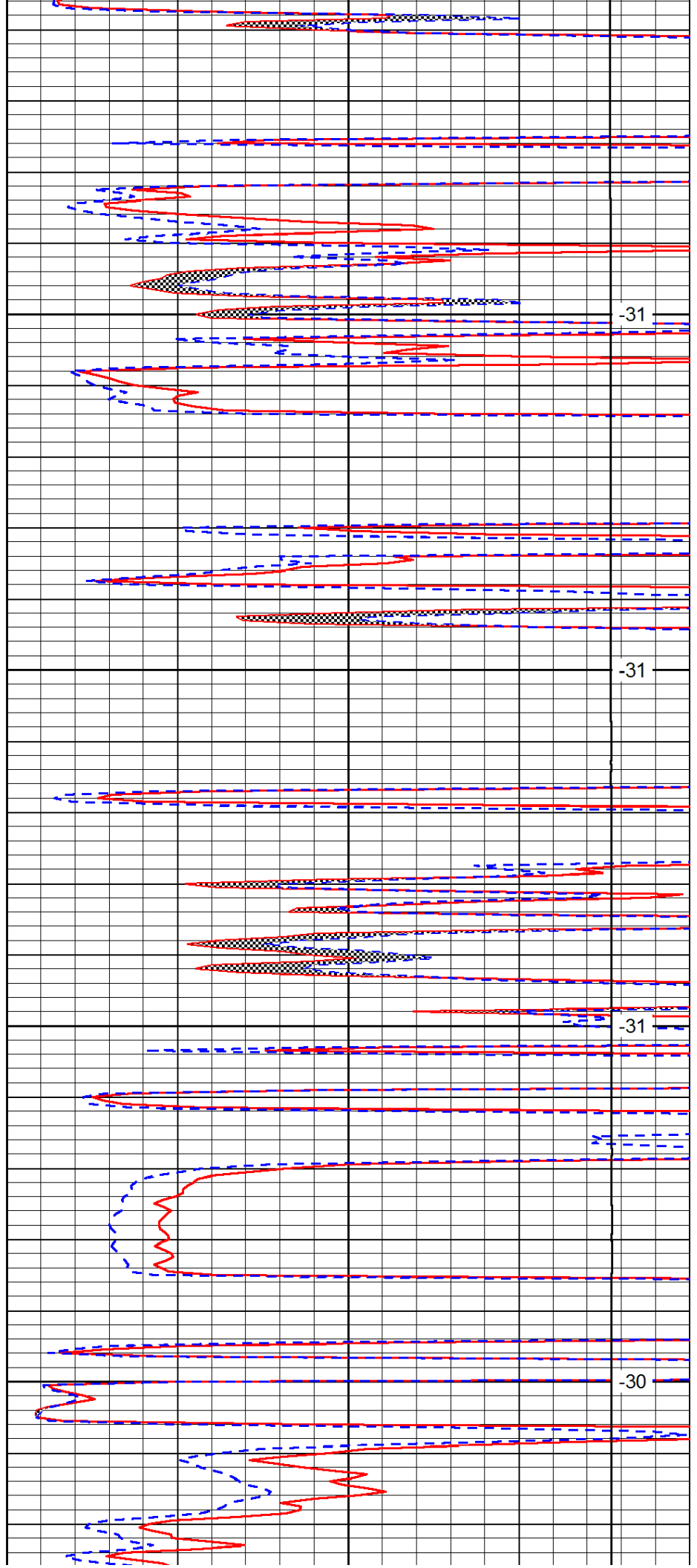


3900

3950

4000

4050

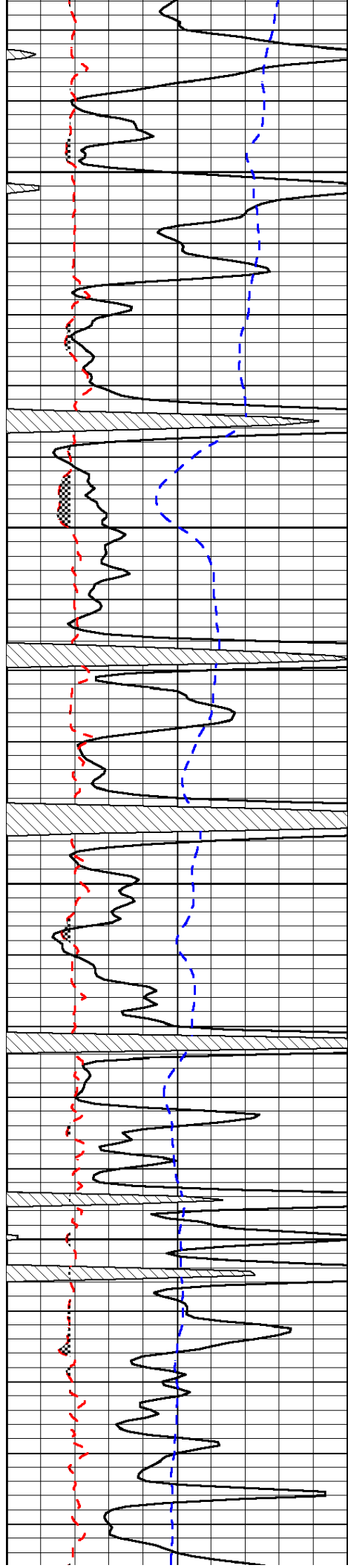


-31

-31

-31

-30

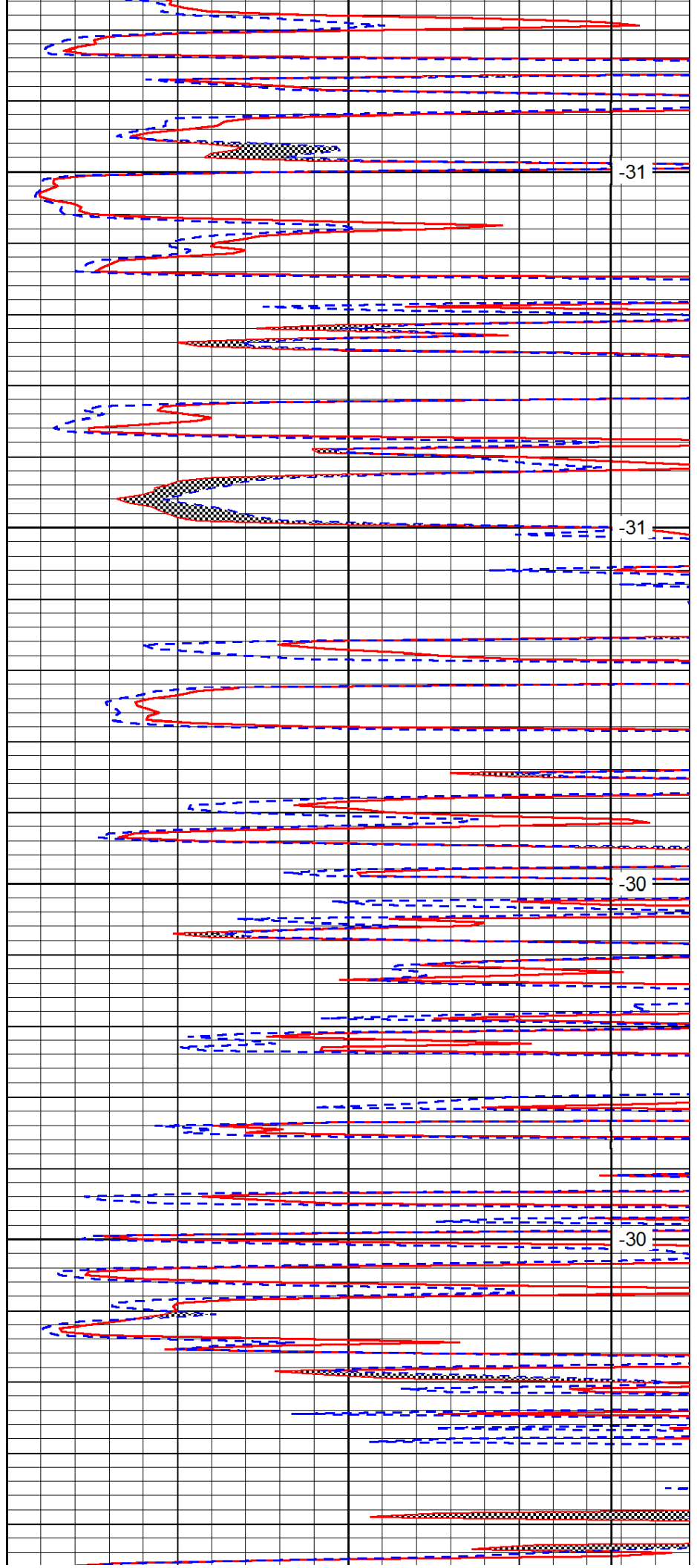


4100

4150

4200

4250

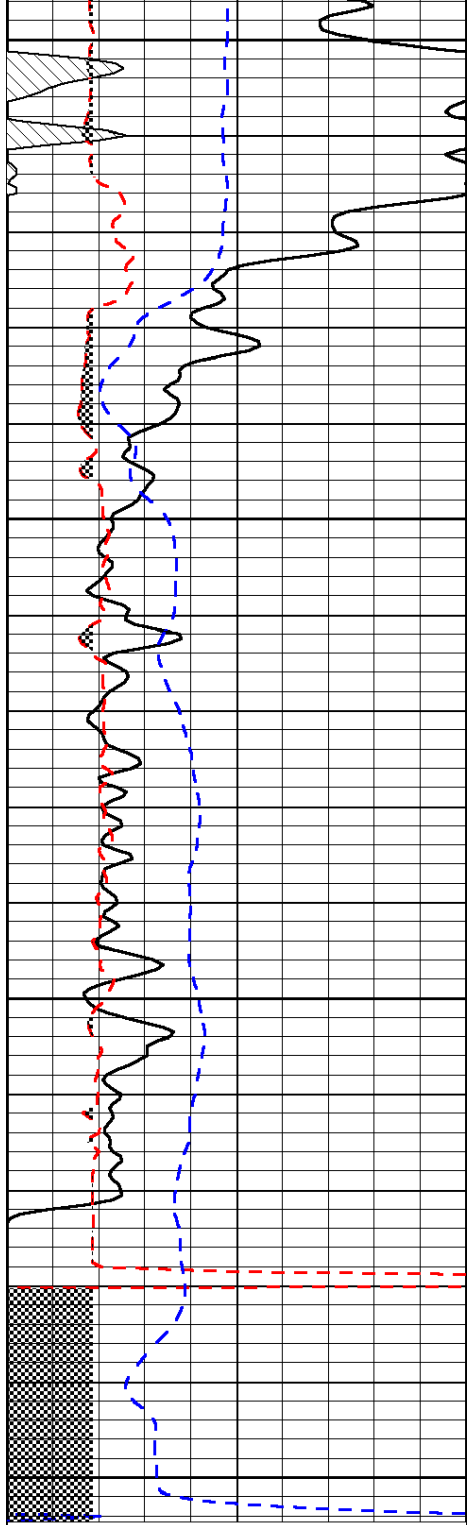


-31

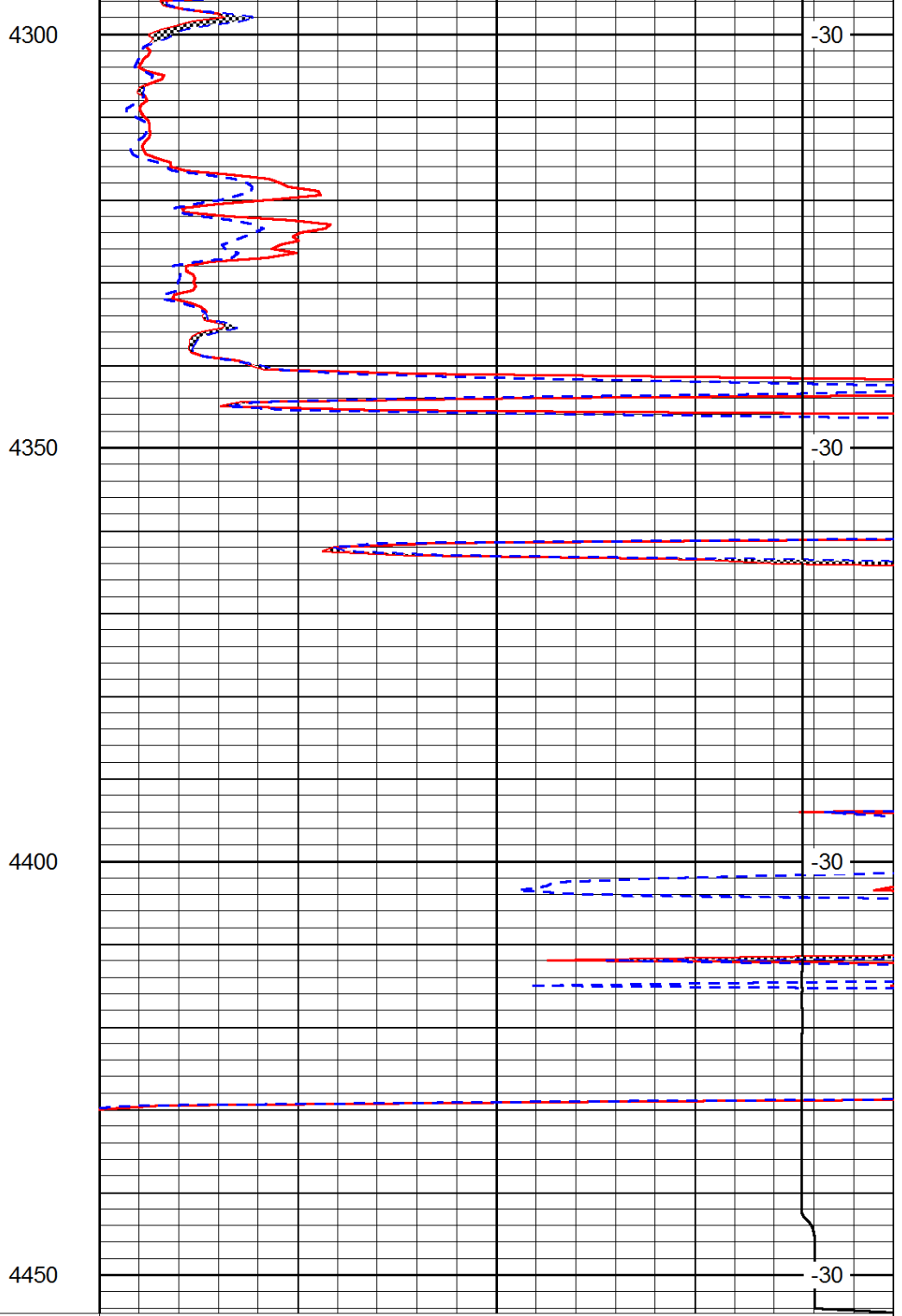
-31

-30

-30



0	Gamma Ray	150
6	Micro Log Caliper (GAPI)	16
-200	SP (mV)	0



0	Micro Inverse 1 X 1	40
0	Micro Normal 2"	40
15000	Line Weight	0

LSPD