



Pioneer Energy Services

Dual Compensated Porosity Log

Company Black Tea Oil, LLC
Well Hibbert A #2
Field Bridges
County Logan **State** Kansas
Location 2425' FNL & 335' FEL
Sec: 27 **Twp:** 14S **Rge:** 32W
Other Services DIL MEL/BHCS

API No. 15-109-21328-00-00
Permanent Datum Ground Level **Elevation** 2655
Log Measured From Kelly Bushing **12 Ft. Above Perm. Datum**
Drilling Measured From Kelly Bushing
Date 10/12/2014
K.B. 2667
D.F. G.I.L. 2655

Run Number	One
Type Log	CNL / CDL
Depth Driller	4420
Depth Logger	4420
Bottom Logged Interval	4399
Top Logged Interval	3000
Type Fluid In Hole	Chemical
Salinity, PPM CL	8000
Density	9.0
Level	Full
Max. Rec. Temp. F	122
Operating Rig Time	5 Hours
Equipment -- Location	91 Hays
Recorded By	D. Schmidt
Witnessed By	Richard Thomasson

Borehole Record		Casing Record					
Run No	Bit From	To	Size	Wgt.	From	To	
One	12.25	00	265	8.625	23#	00	265
Two	7.875	265					

<<< Fold Here >>>

All interpretations are opinions based on inferences from electrical or other measurements and we cannot and do not guarantee the accuracy or correctness of any interpretation, and we shall not, except in the case of gross or willful negligence on our part, be liable or responsible for any loss, costs, damages, or expenses incurred or sustained by anyone resulting from any interpretation made by any of our officers, agents or employees. These interpretations are also subject to our general terms and conditions set out in our current Price Schedule.

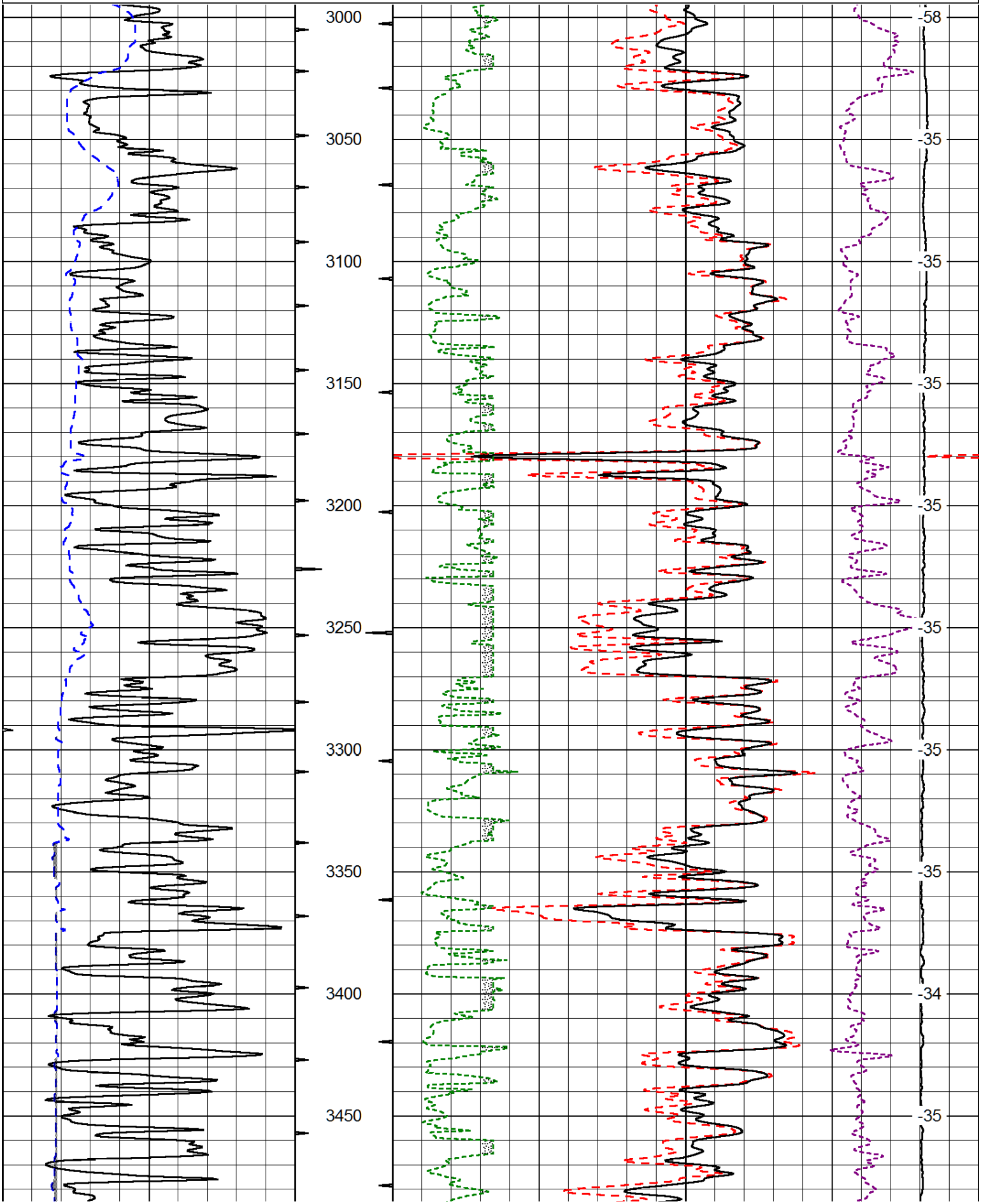
Comments

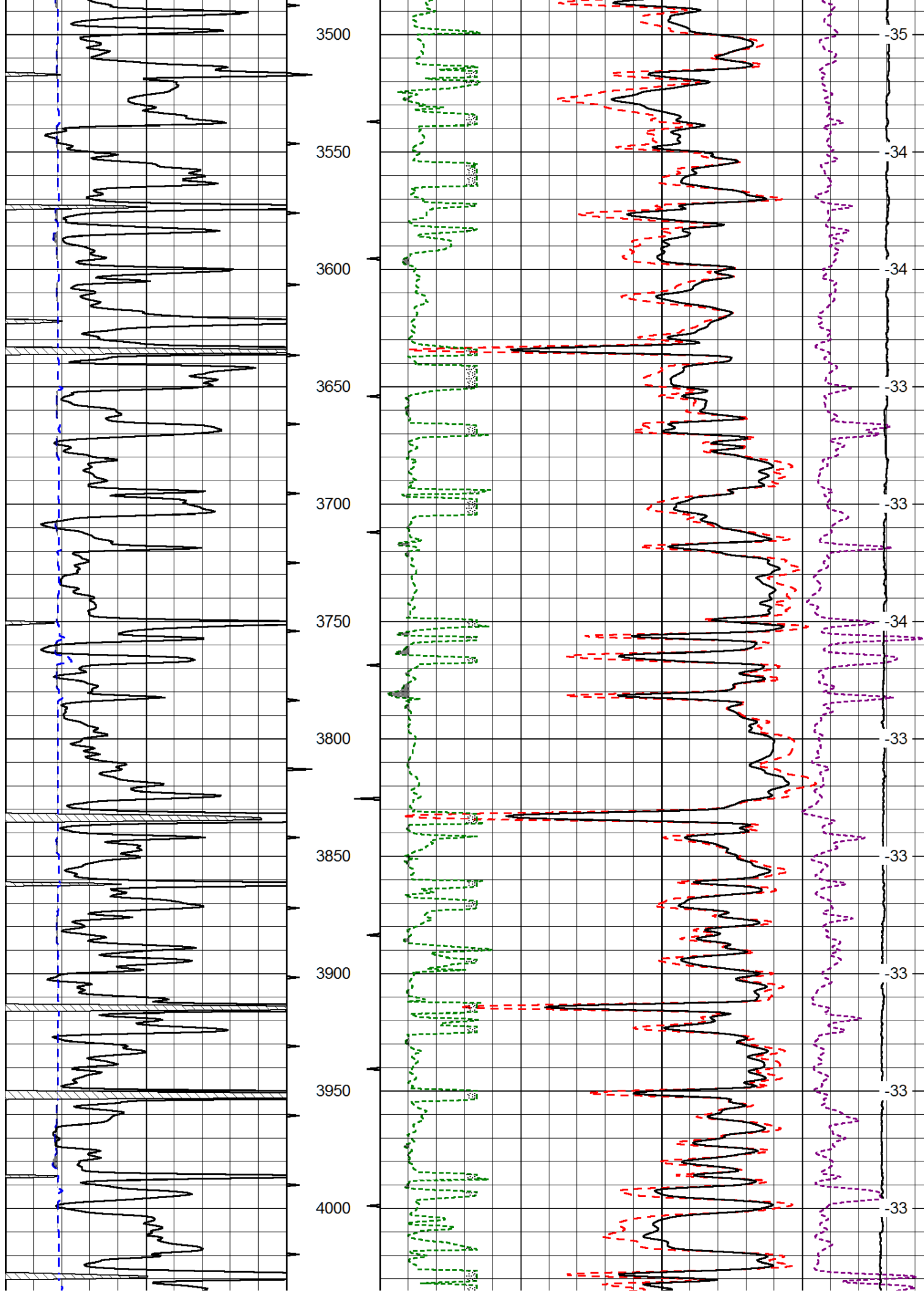
Thank you for using Log-Tech, Inc.
 (785) 625-3858
 Oakley,
 South to Jayhawk Rd, 1 3/4 South,
 West into gates,
 North and East Into

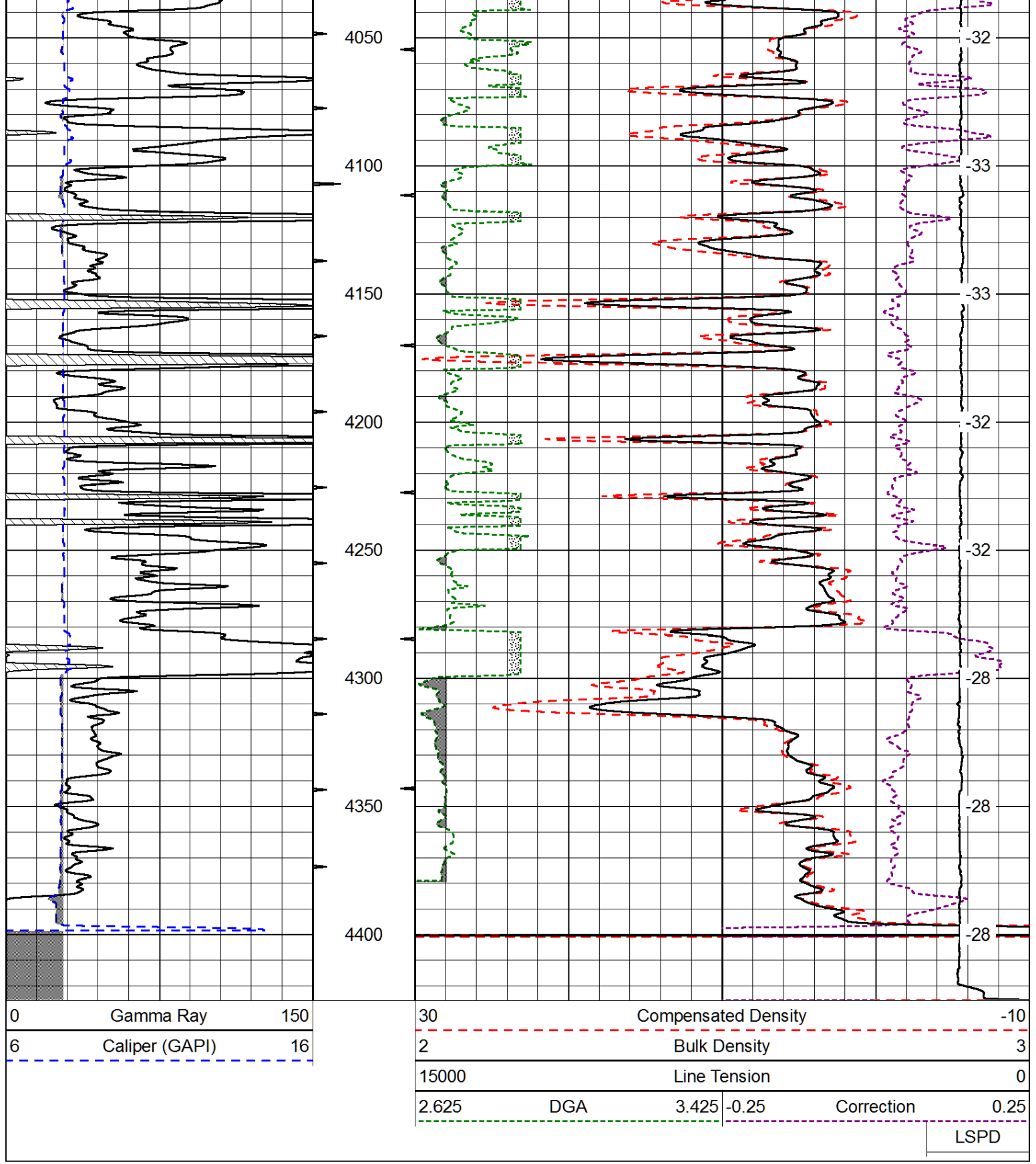
Database File: blacktea_hibbert_a_2hd.db
 Dataset Pathname: dil/btstkml
 Presentation Format: cdl
 Dataset Creation: Sun Oct 12 10:10:52 2014
 Charted by: Depth in Feet scaled 1:600

0	Gamma Ray	150
6	Caliper (GAPI)	16

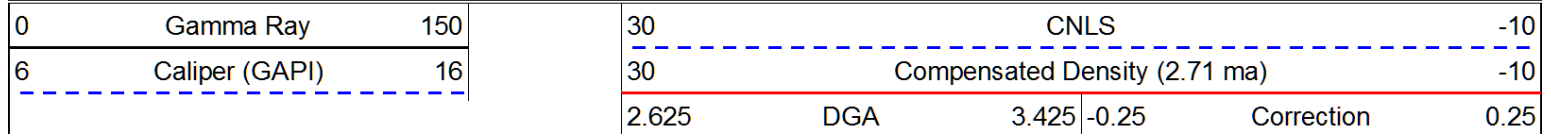
30	Compensated Density		-10
2	Bulk Density		3
15000	Line Tension		0
2.625	DGA	3.425	-0.25
			Correction
			0.25
LSPD			







Database File: blacktea_hibbert_a_2hd.db
 Dataset Pathname: dil/btstkml
 Presentation Format: cndlspec
 Dataset Creation: Sun Oct 12 10:10:52 2014
 Charted by: Depth in Feet scaled 1:240



10000

Line Tension

0

LSPD

