



Pioneer Energy Services

Borehole Compensated Sonic Log

Company Black Tea Oil, LLC
Well Hibbert A #2
Field Bridges
County Logan **State** Kansas

Location 2425' FNL & 335' FEL
Sec: 27 **Twp:** 14S **Rge:** 32W

Other Services
 CNL/CDL
 MEL/DIL

Permanent Datum Ground Level Elevation 2655
 Log Measured From Kelly Bushing 12 Ft. Above Perm. Datum
 Drilling Measured From Kelly Bushing

K.B. 2667
 D.F.
 G.L. 2655

15-109-21328-00-00

Date	10/12/2014	
Run Number	Two	
Type Log	BHC Sonic	
Depth Driller	4420	
Depth Logger	4420	
Bottom Logged Interval	4409	
Top Logged Interval	250	
Type Fluid In Hole	Chemical	
Salinity, PPM CL	8000	
Density	9.0	
Level	Full	
Max. Rec. Temp. F	122	
Operating Rig Time	5 Hours	
Equipment -- Location	91 Hays	
Recorded By	D. Schmidt	
Witnessed By	Richard Thomasson	

Borehole Record

Run No	Bit	From	To	Size	Wgt.	From	To
One	12.25	00	265	8.625	23#	00	265
Two	7.875	265	TD				

Casing Record

Run No	Bit	From	To	Size	Wgt.	From	To
One	12.25	00	265	8.625	23#	00	265
Two	7.875	265	TD				

<<< Fold Here >>>

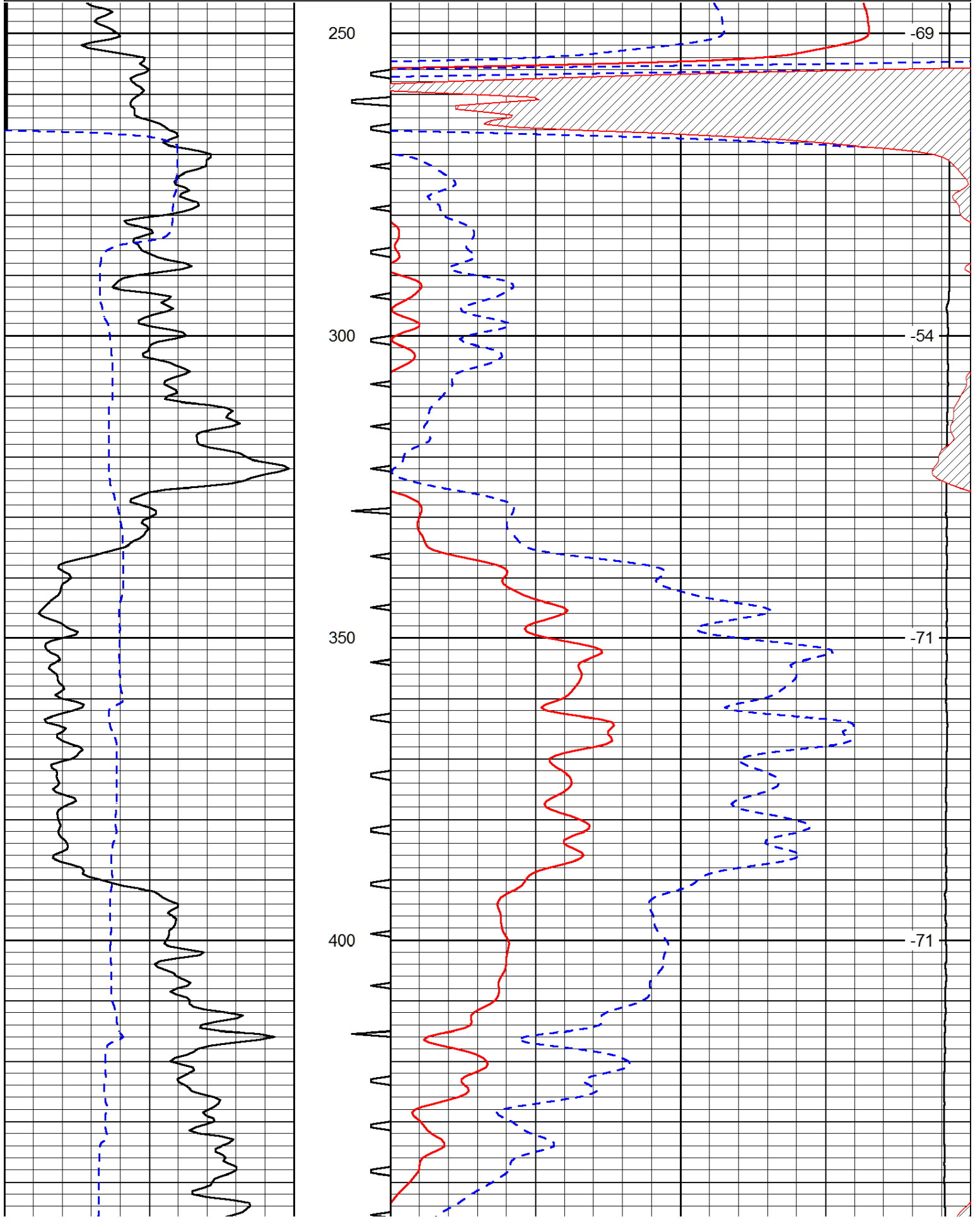
All interpretations are opinions based on inferences from electrical or other measurements and we cannot and do not guarantee the accuracy or correctness of any interpretation, and we shall not, except in the case of gross or willful negligence on our part, be liable or responsible for any loss, costs, damages, or expenses incurred or sustained by anyone resulting from any interpretation made by any of our officers, agents or employees. These interpretations are also subject to our general terms and conditions set out in our current Price Schedule.

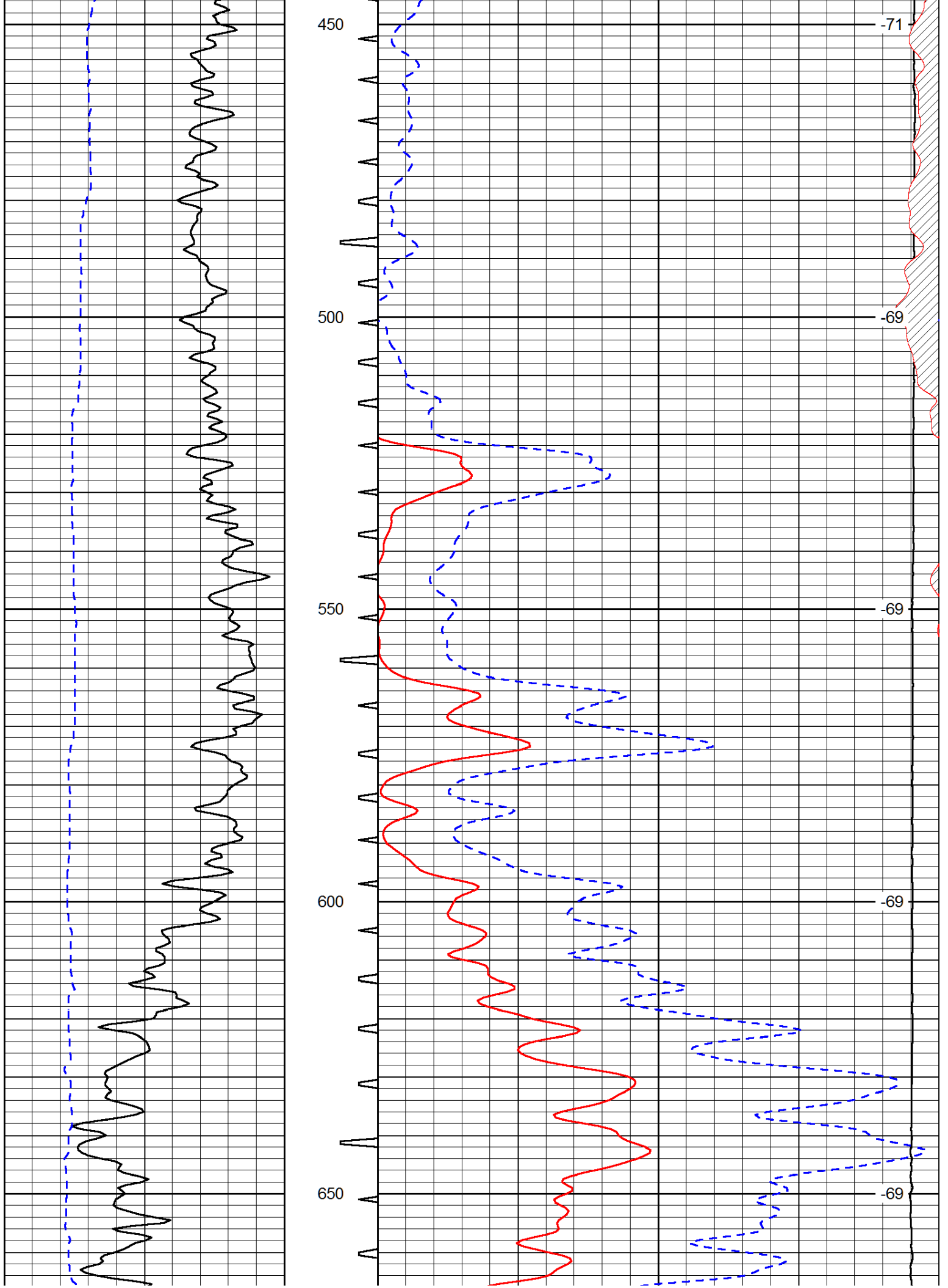
Comments

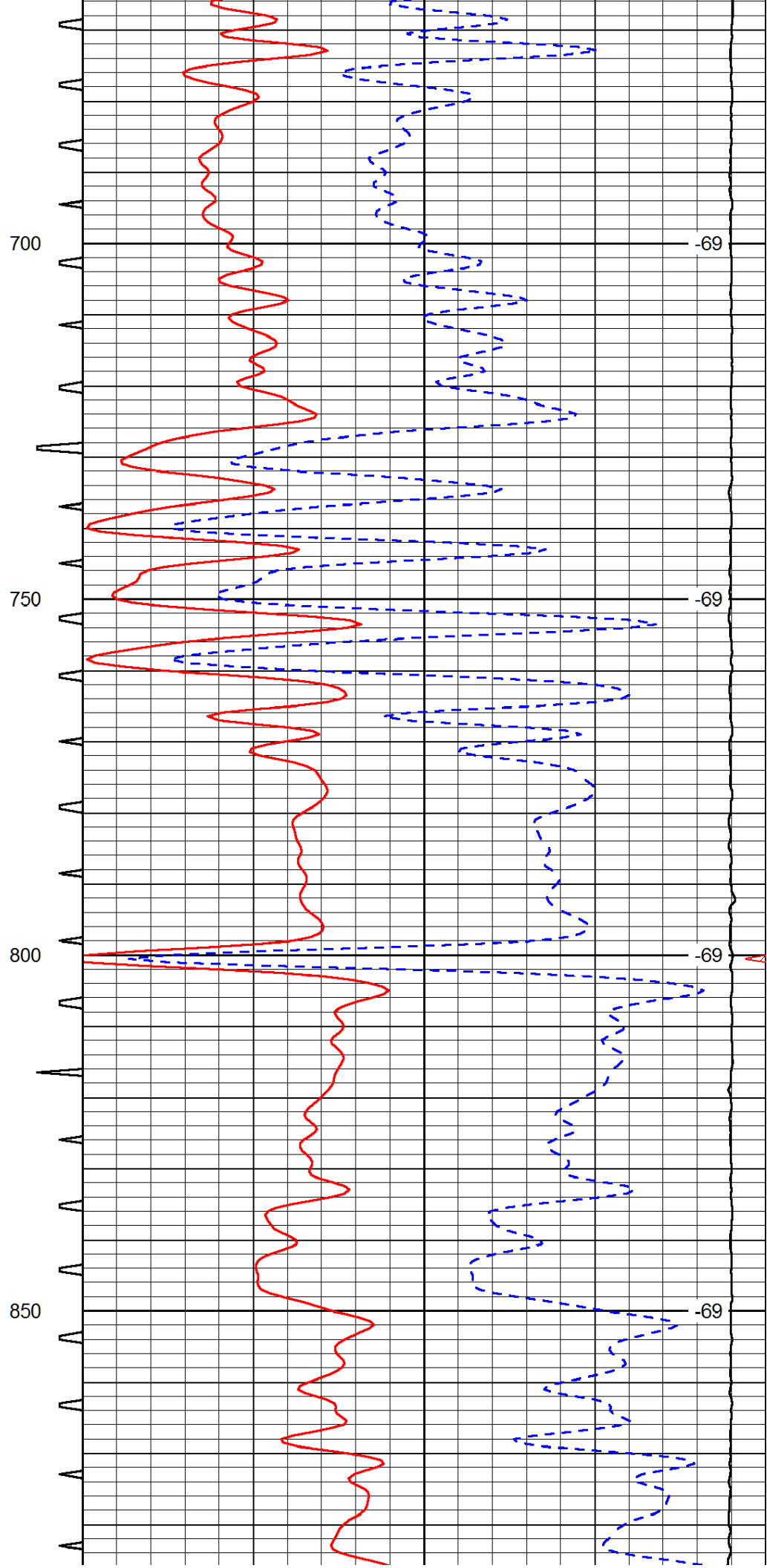
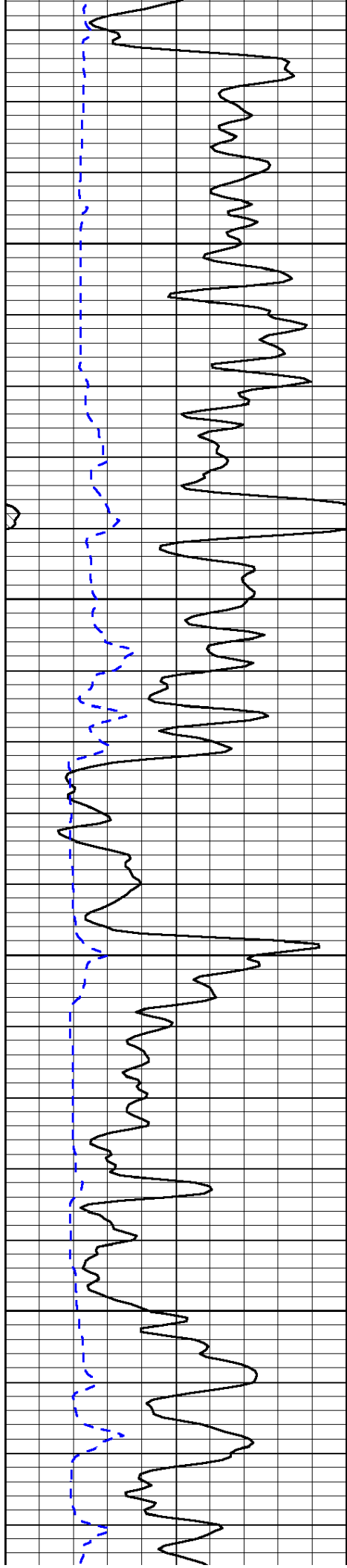
Thank you for using Log-Tech, Inc.
 (785) 625-3858
 Oakley,
 South to Jayhawk Rd, 1 3/4 South,
 West into gates,
 North and East Into

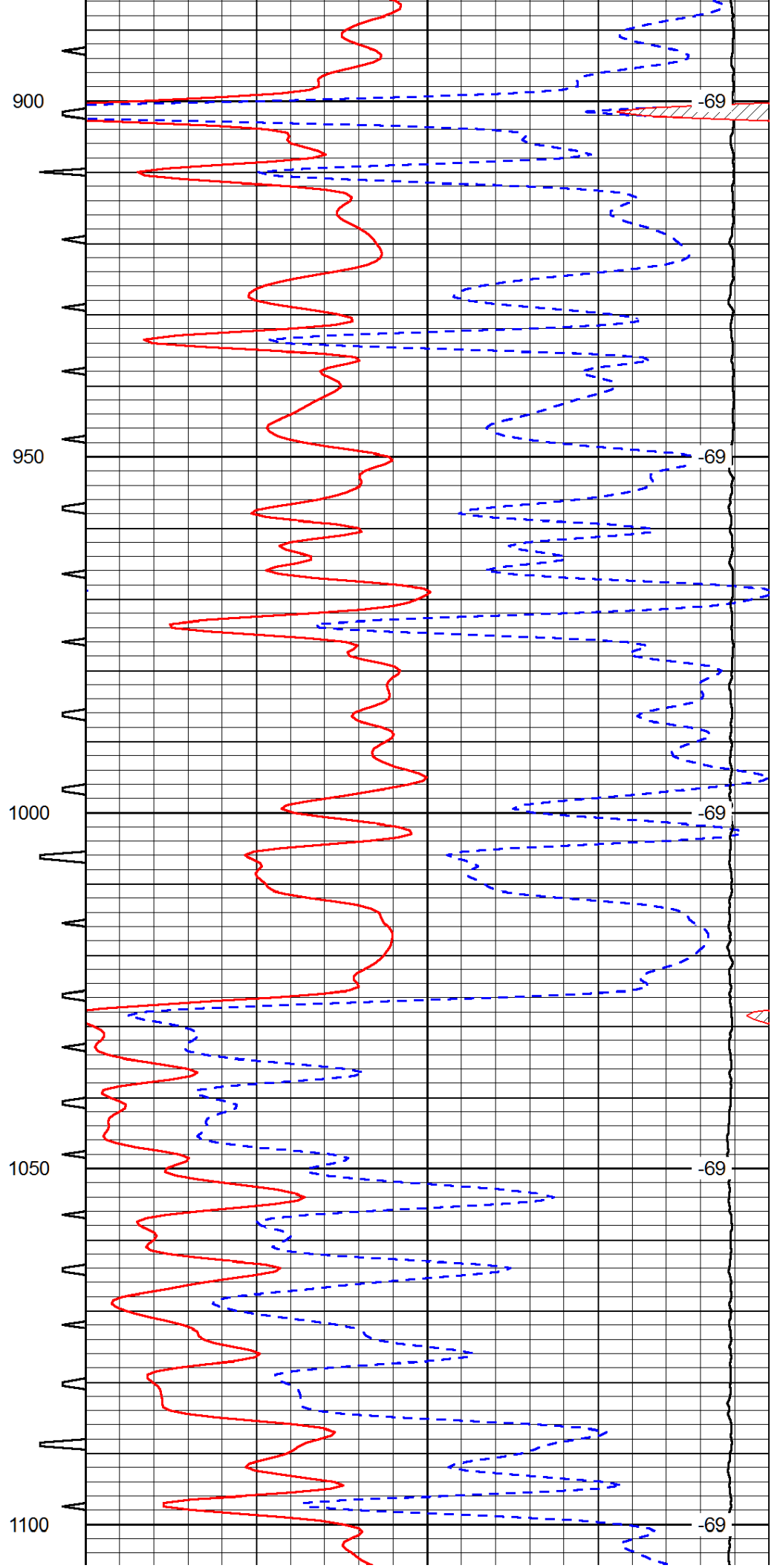
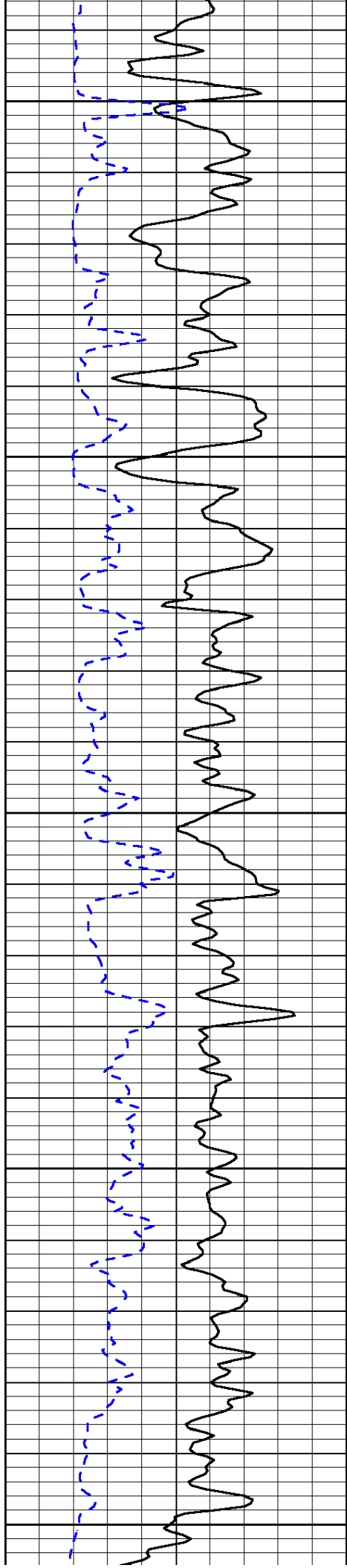
Database File: blacktea_hibbert_a_2hd.db
 Dataset Pathname: dil/btstkml
 Presentation Format: sonic
 Dataset Creation: Sun Oct 12 10:10:52 2014
 Charted by: Depth in Feet scaled 1:240

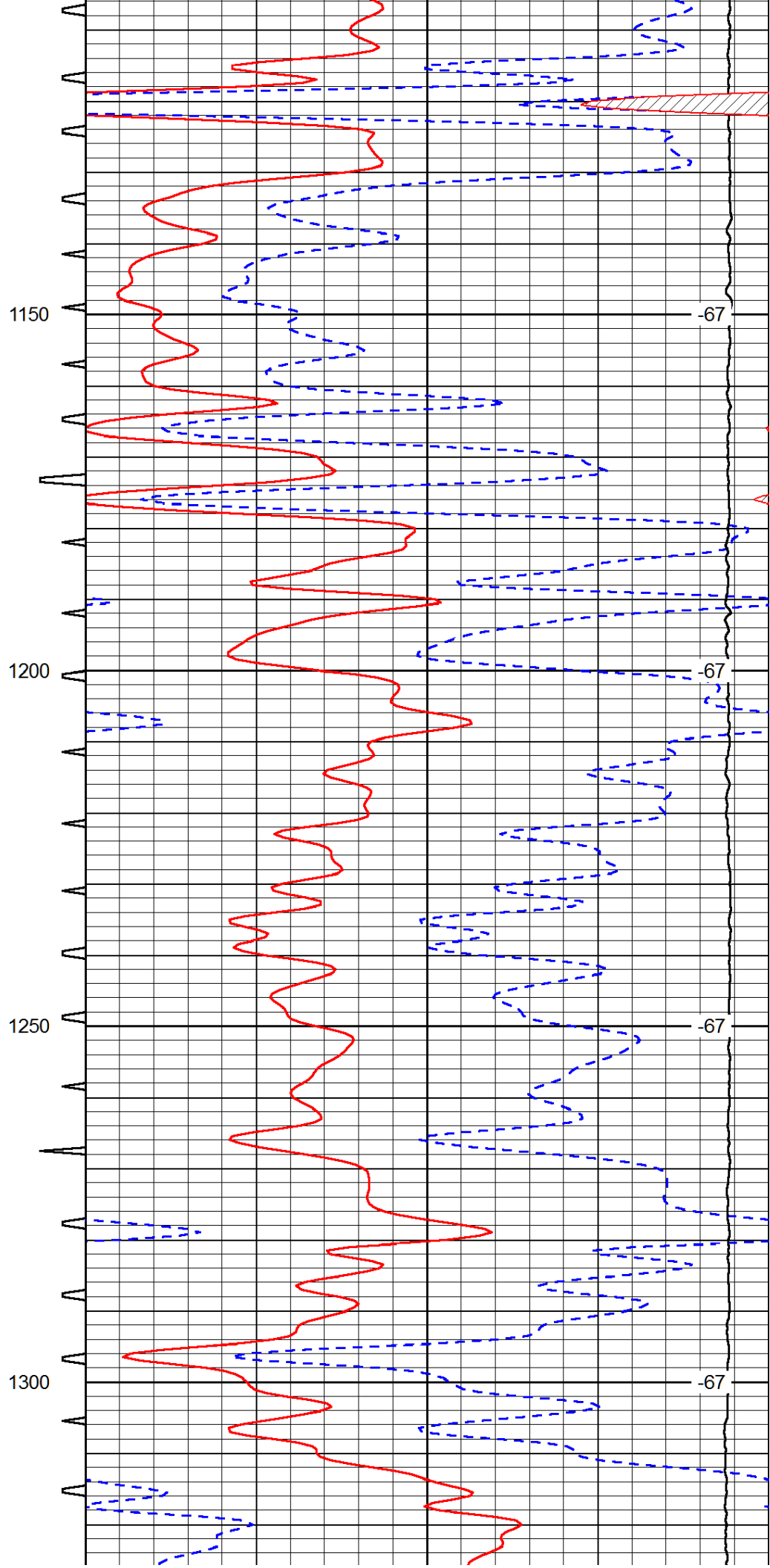
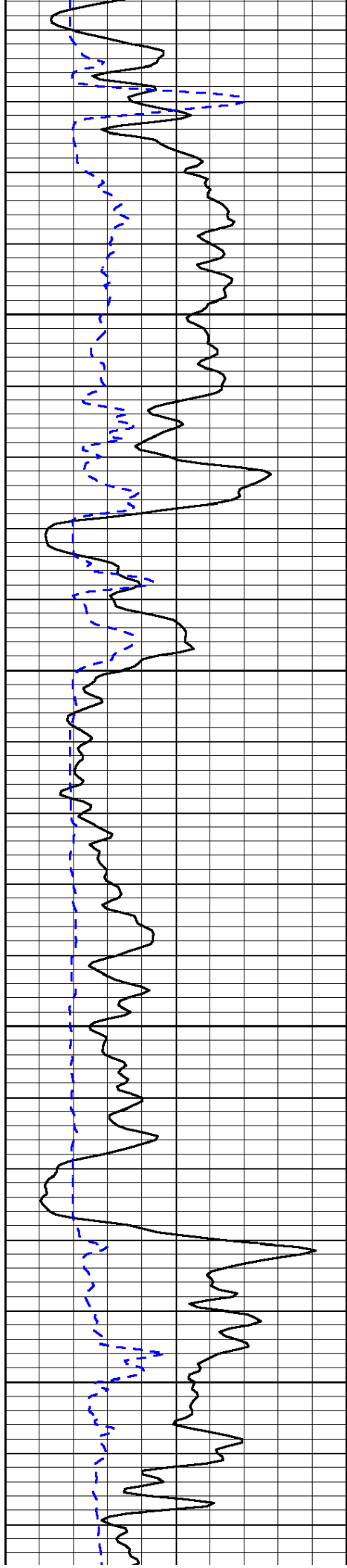
0	Gamma Ray	150	Sonic Int	140	Delta Time (usec/ft)	40
150	Gamma Ray	300	5	0	Sonic Porosity	-10
6	dCAL (GAPI)	16		15000	LTEN (lb)	0
LSPD						

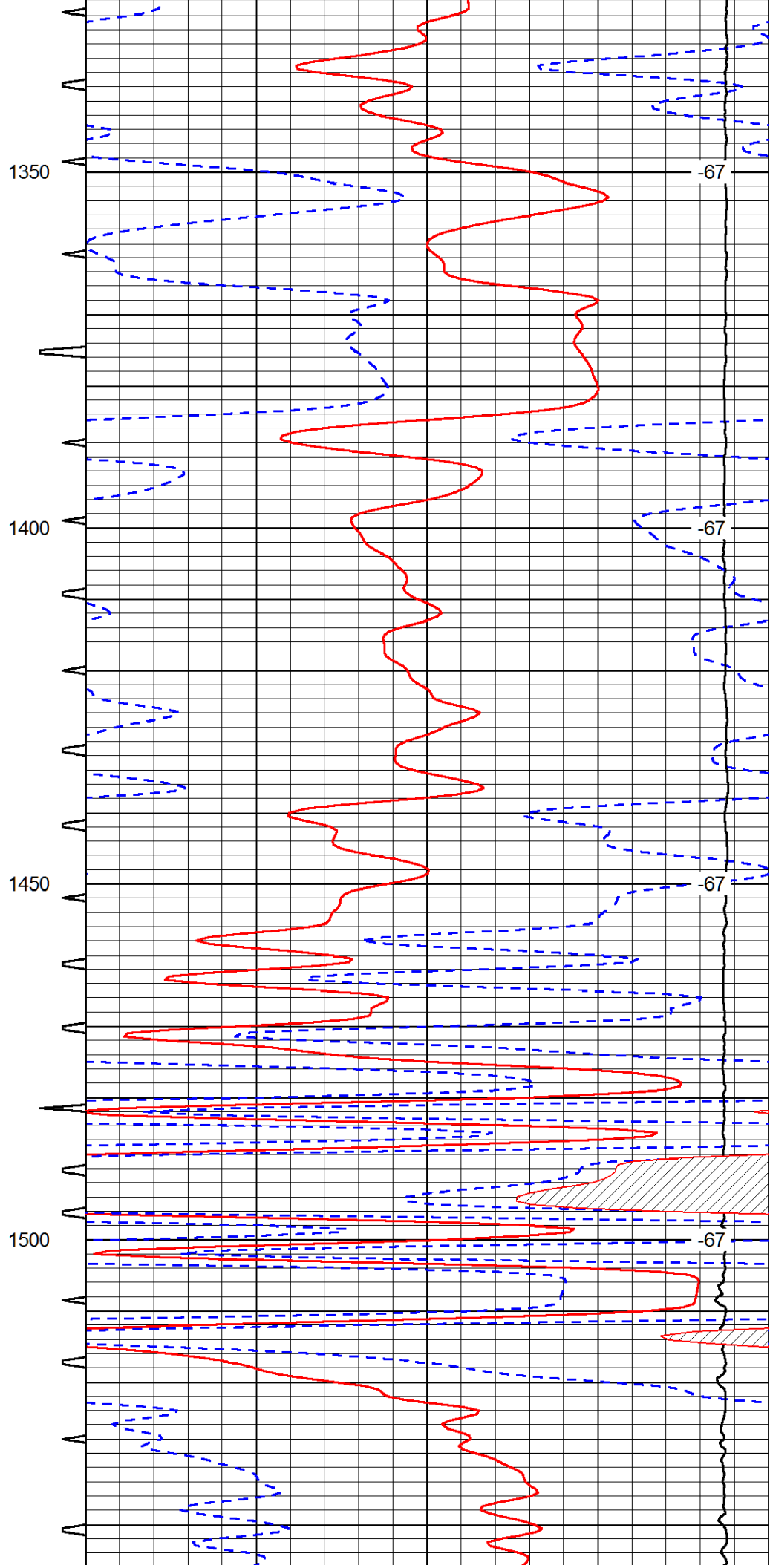
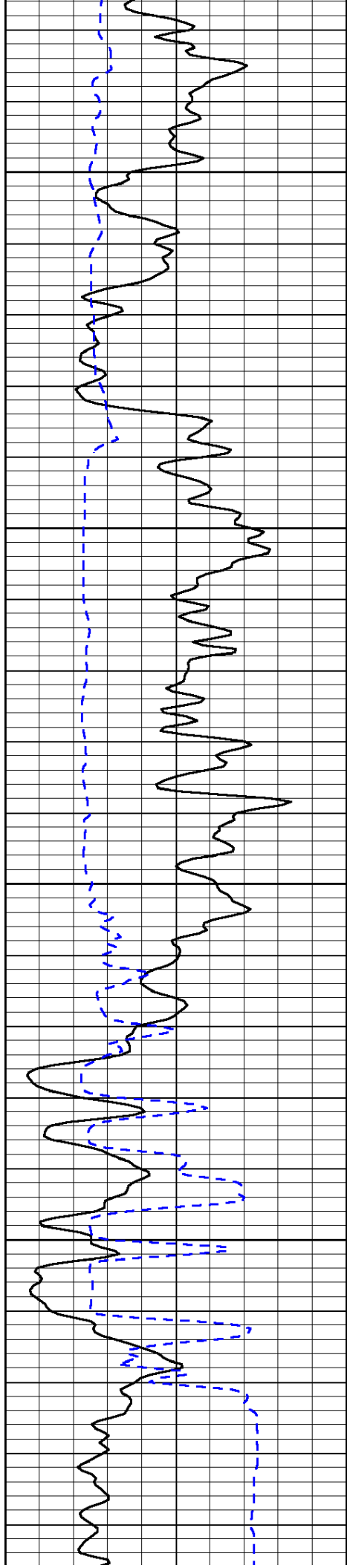


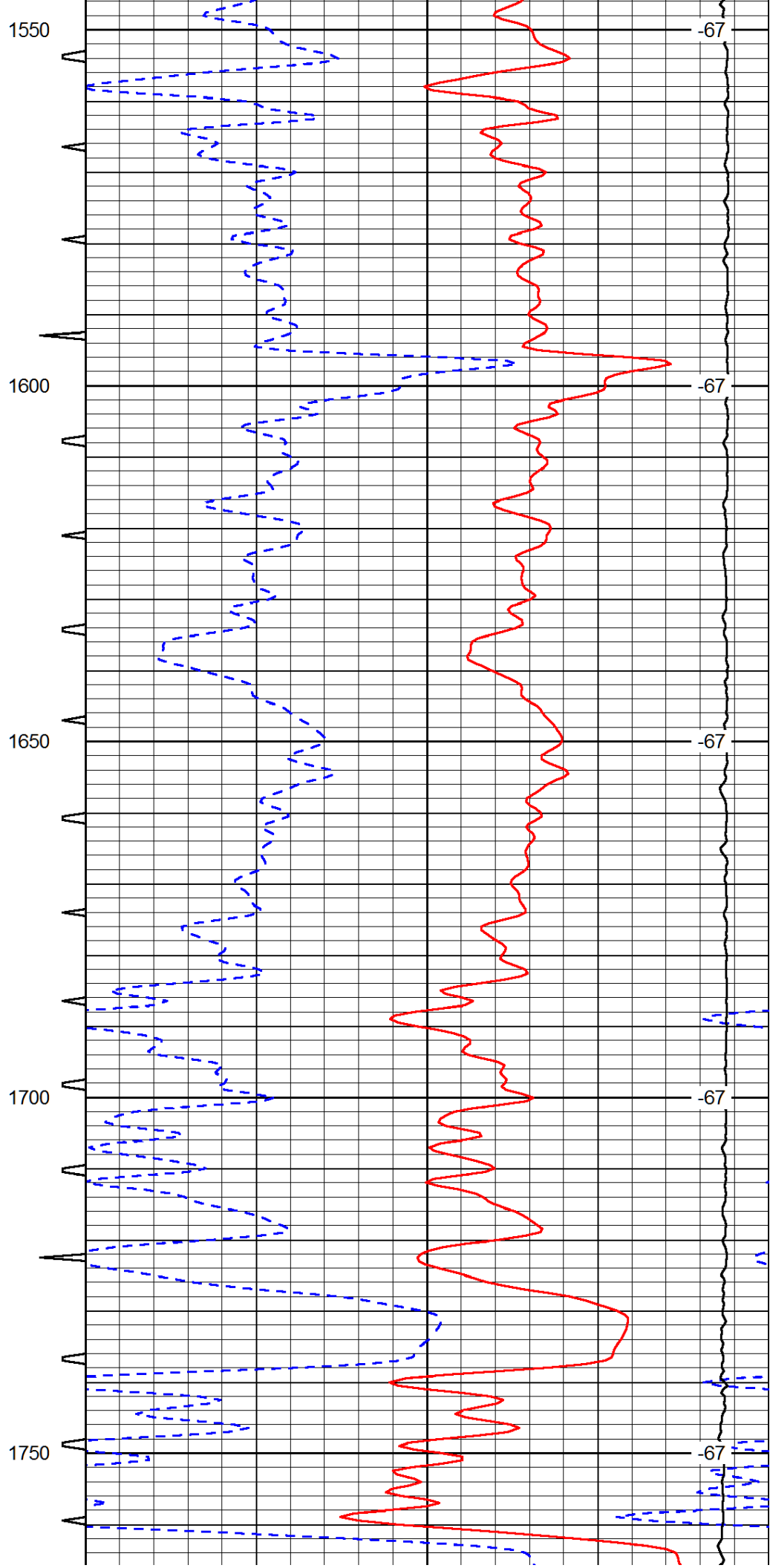
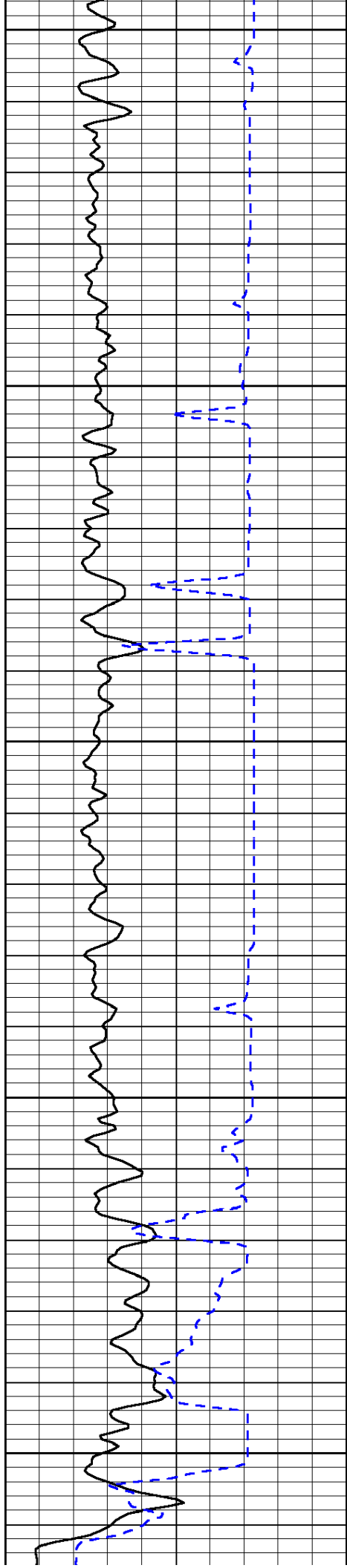


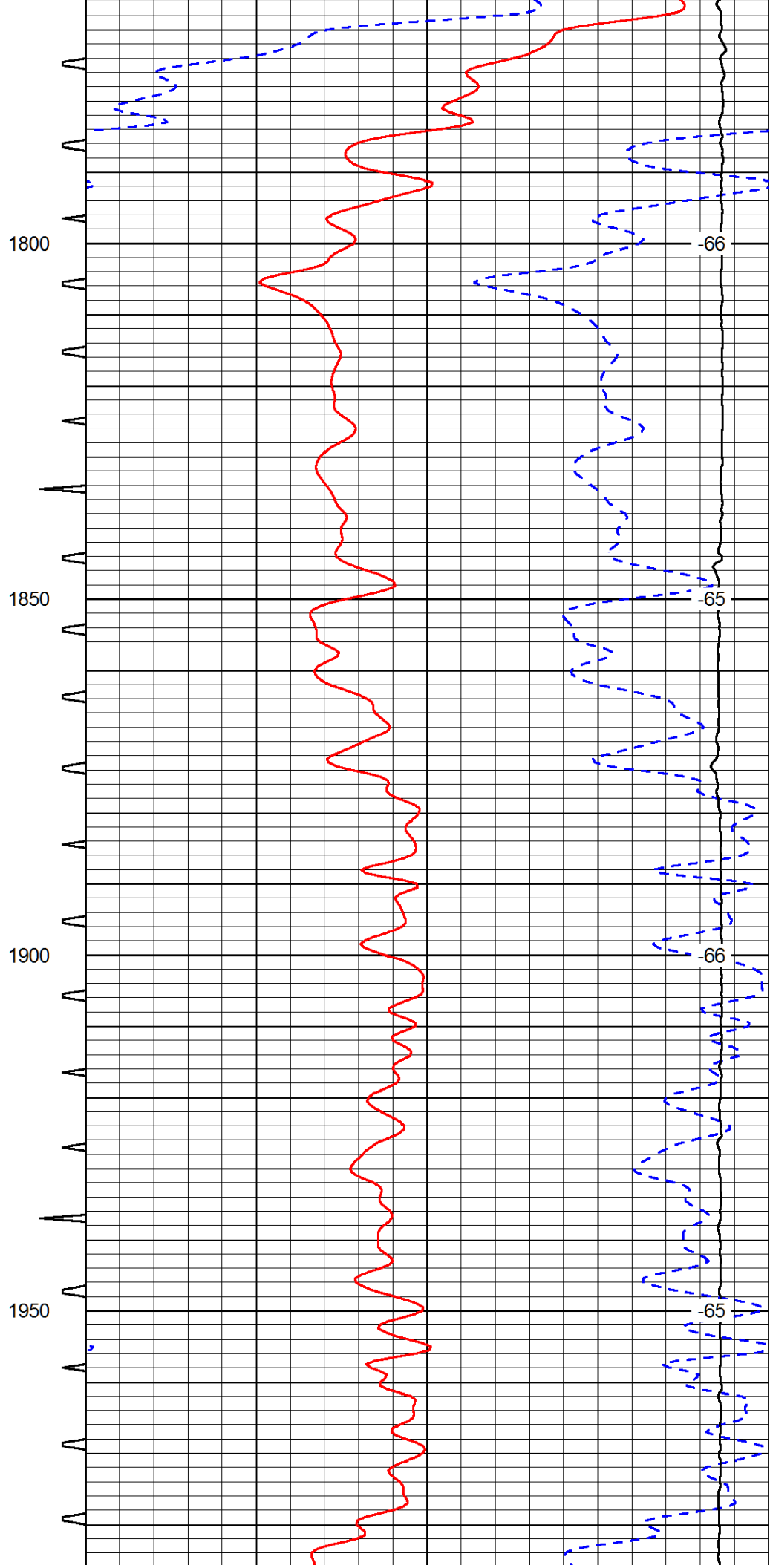
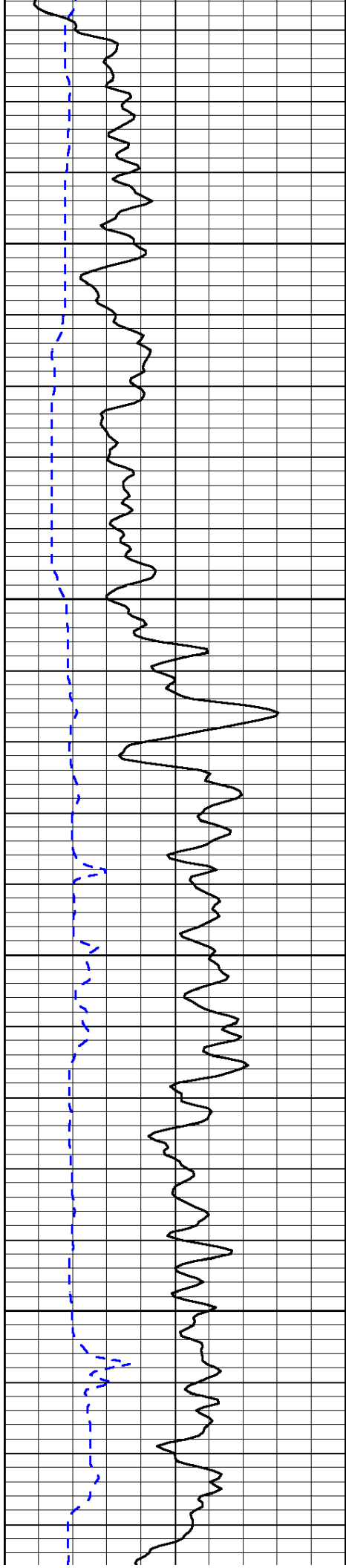


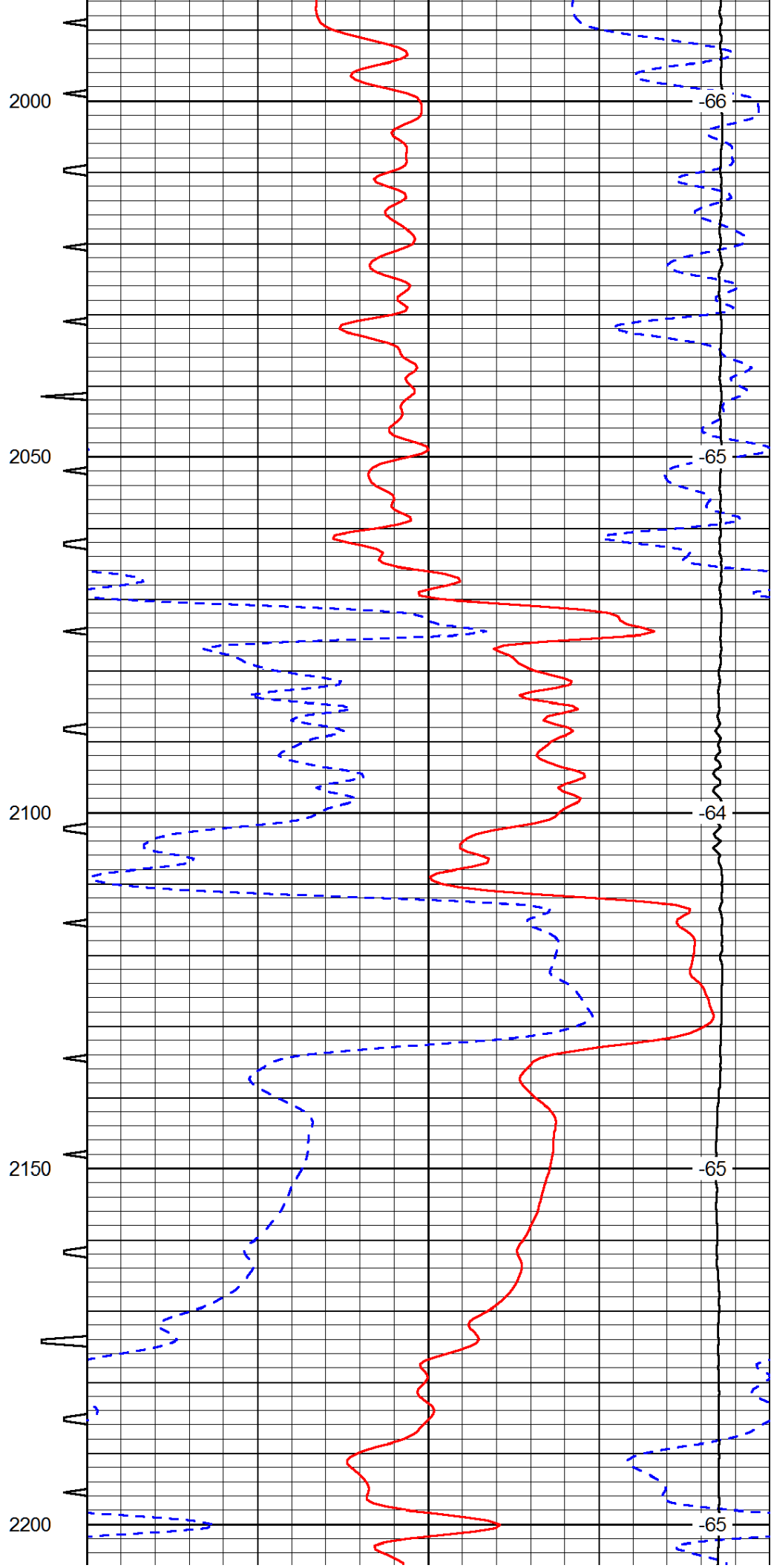
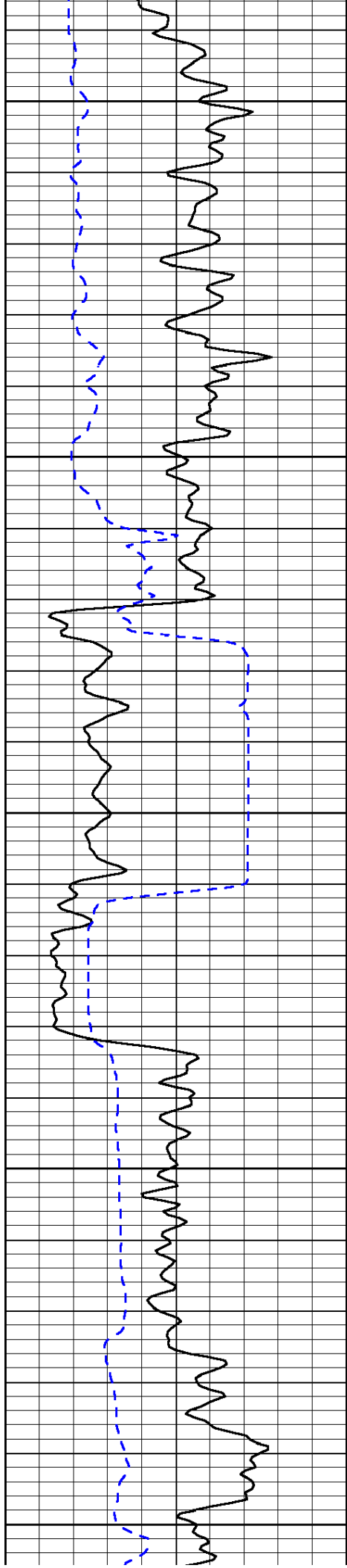


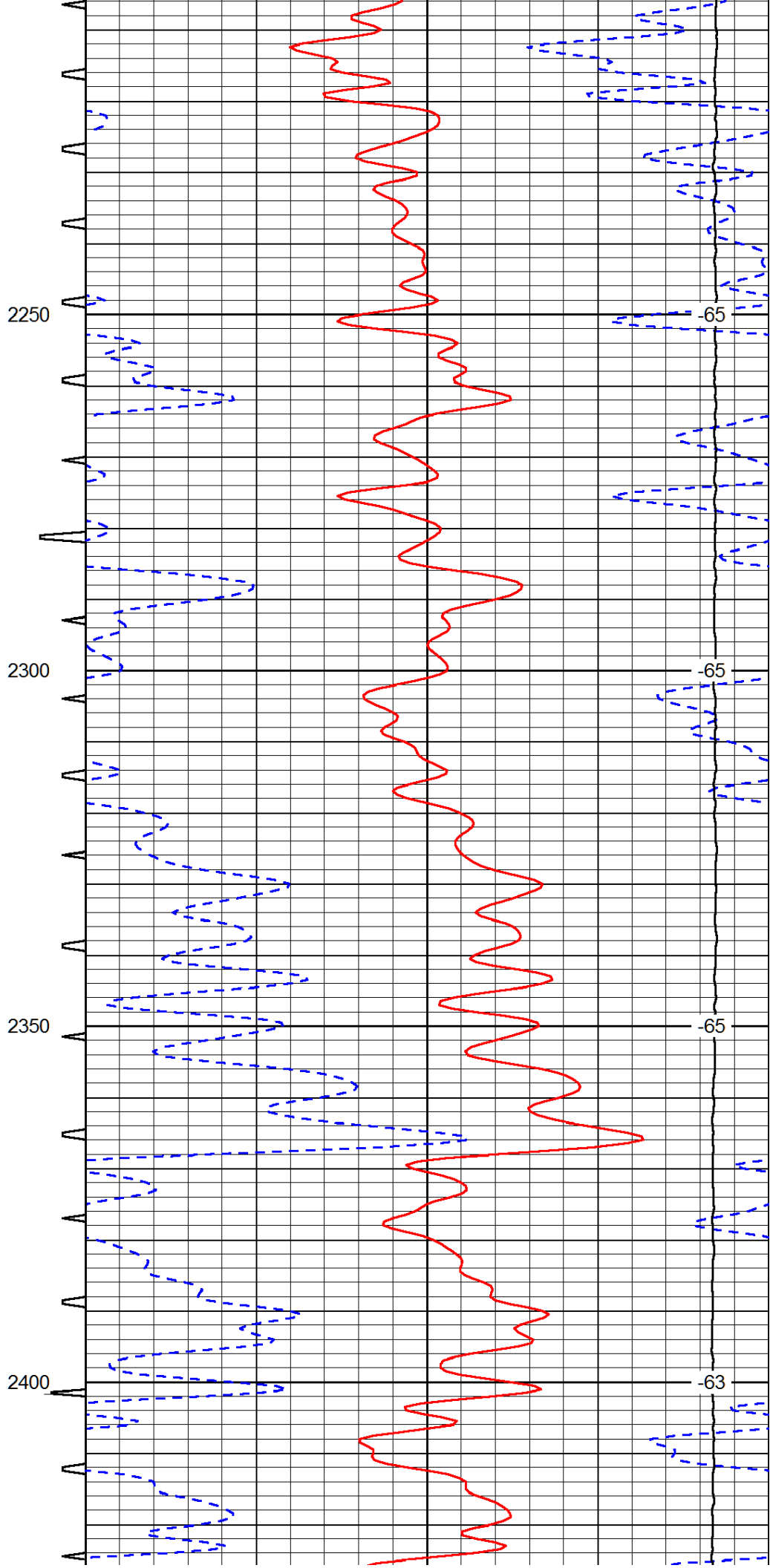
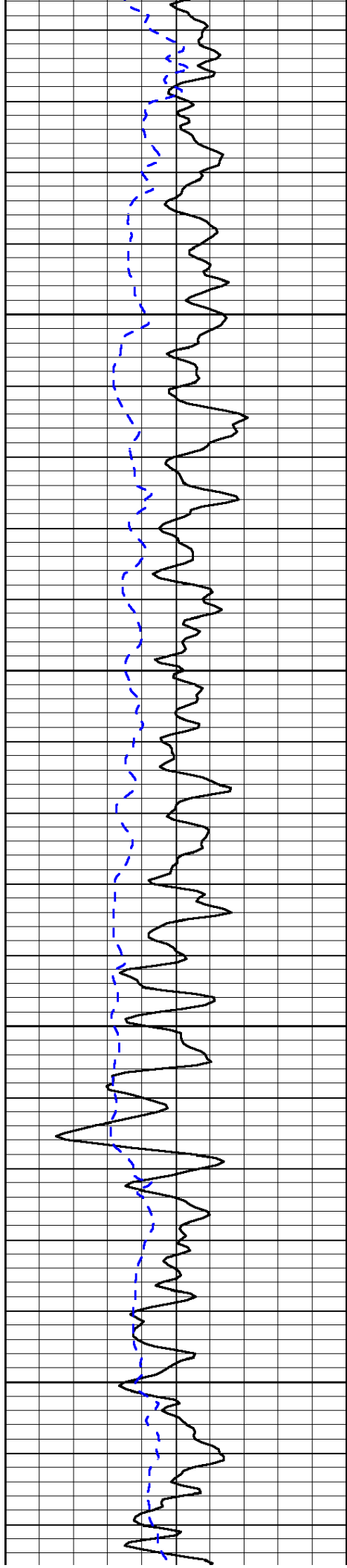


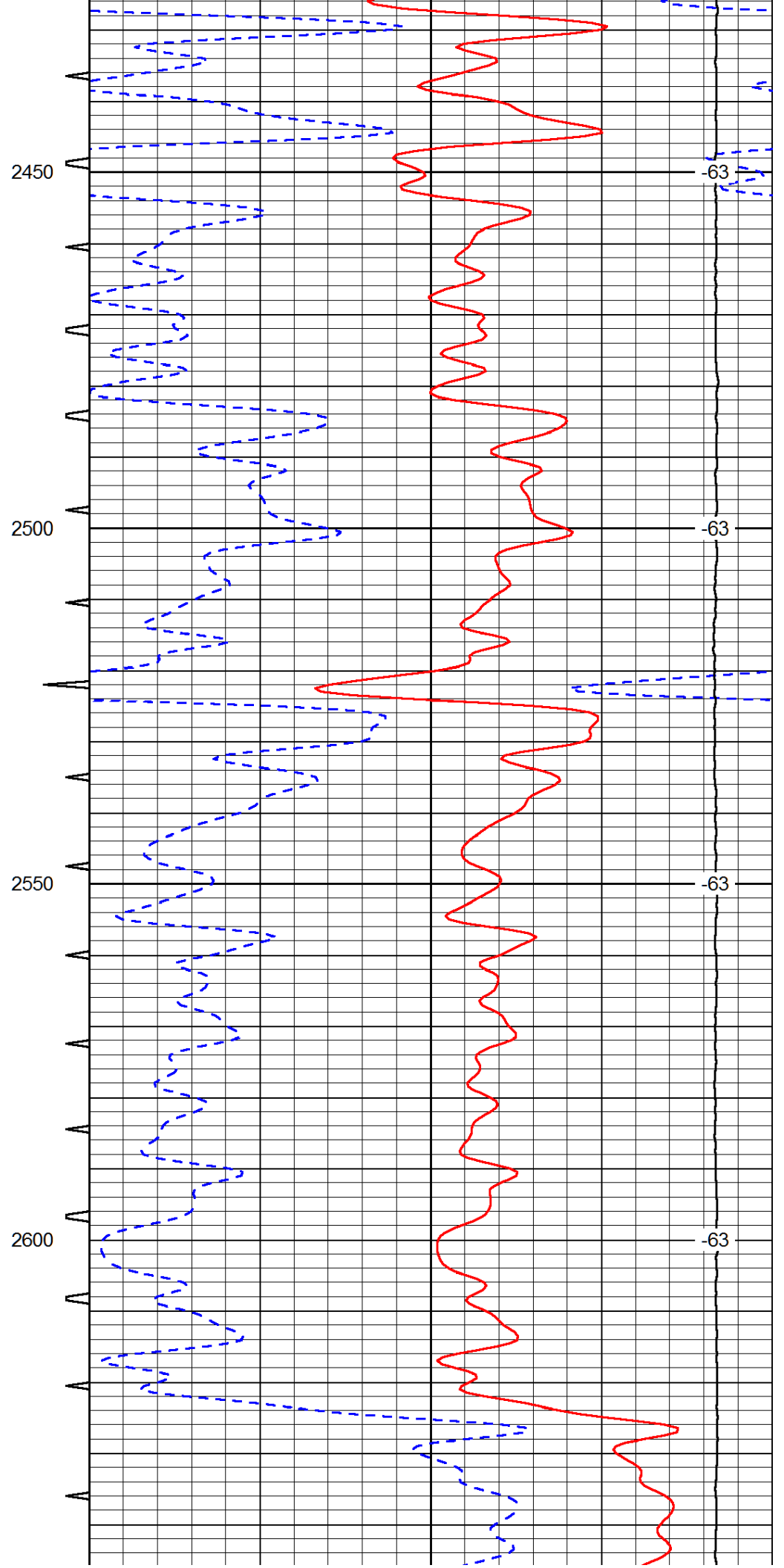
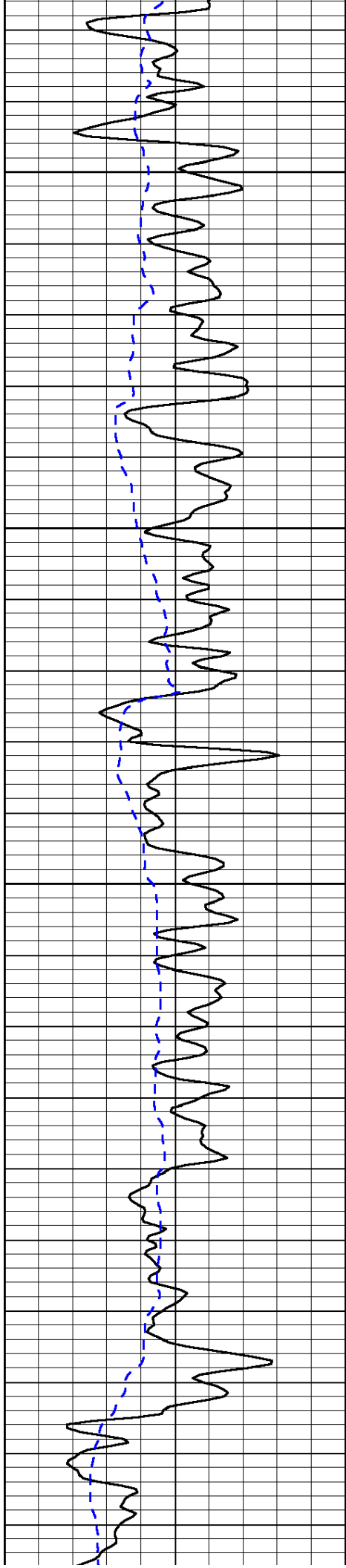


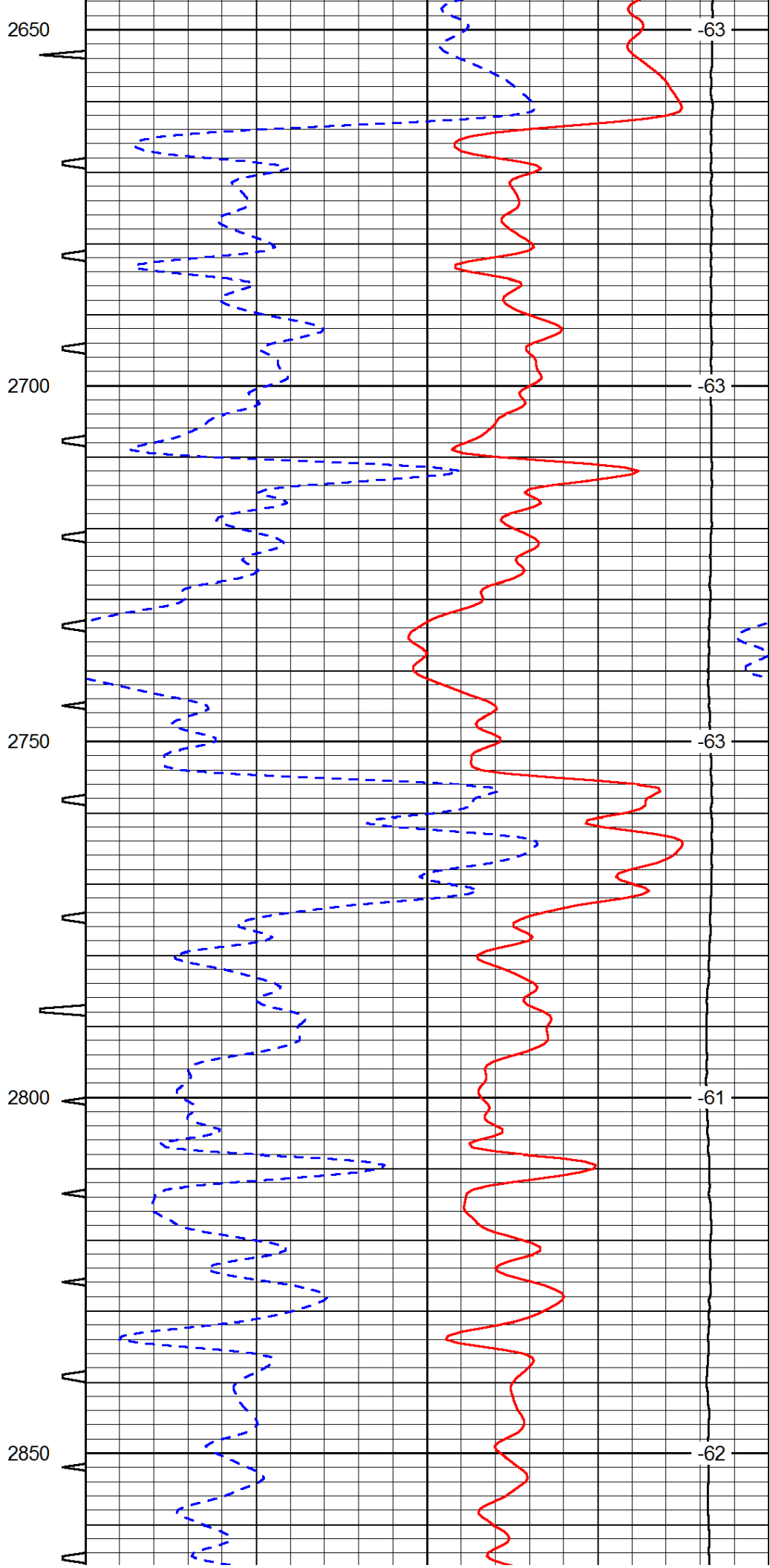
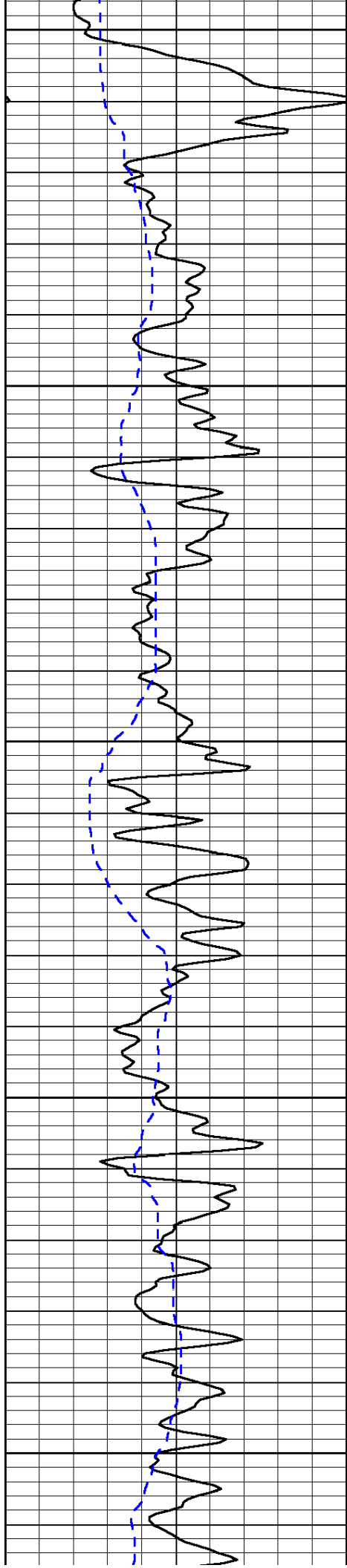


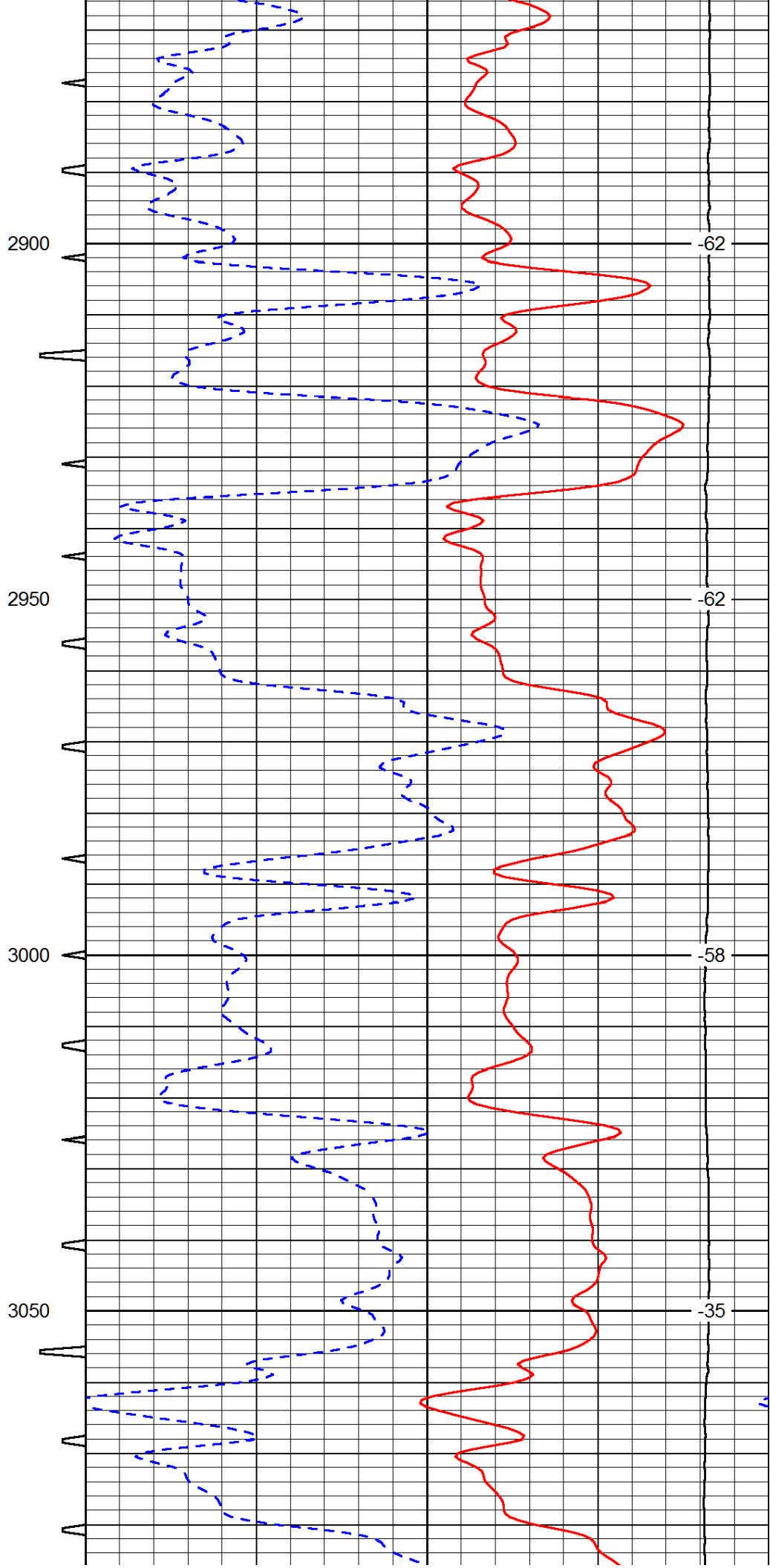
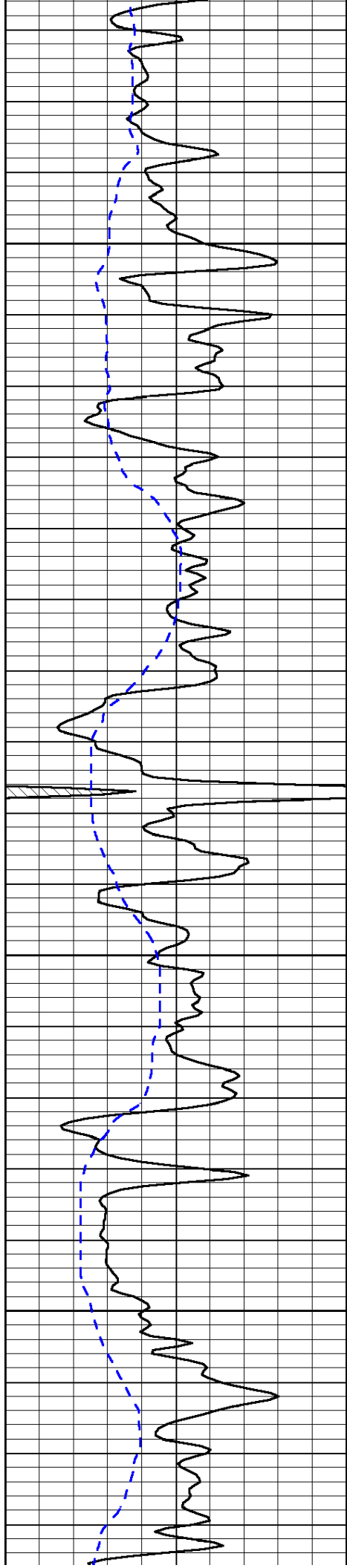


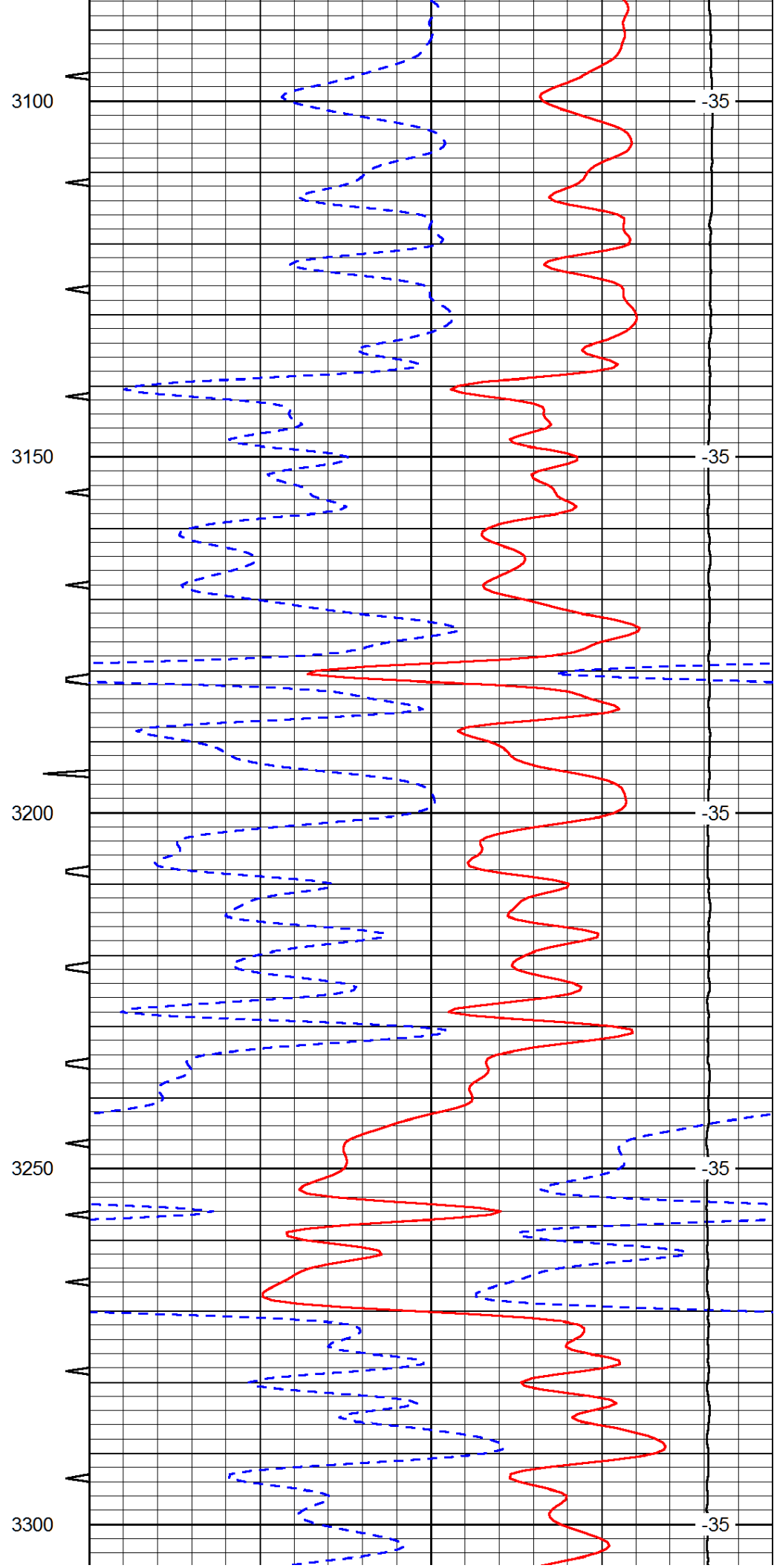
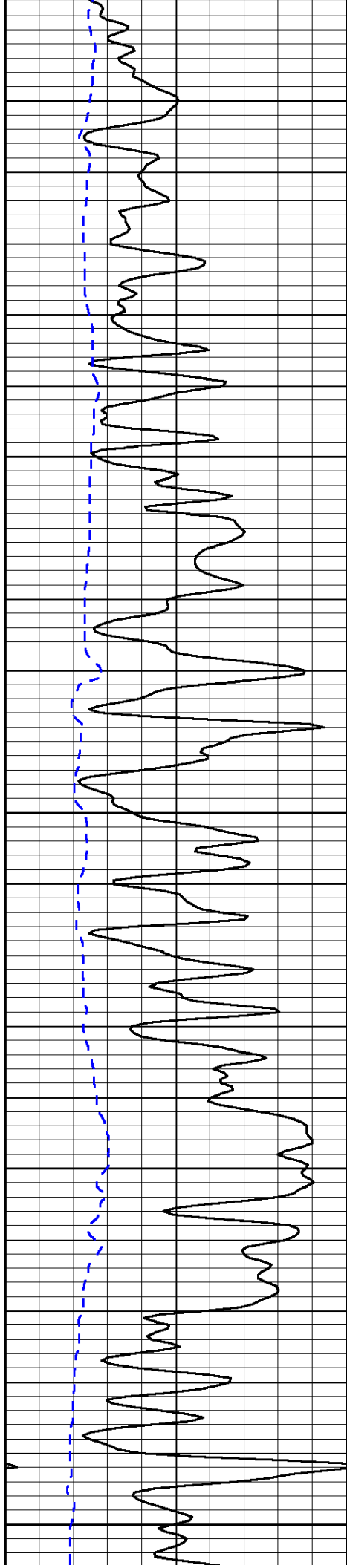


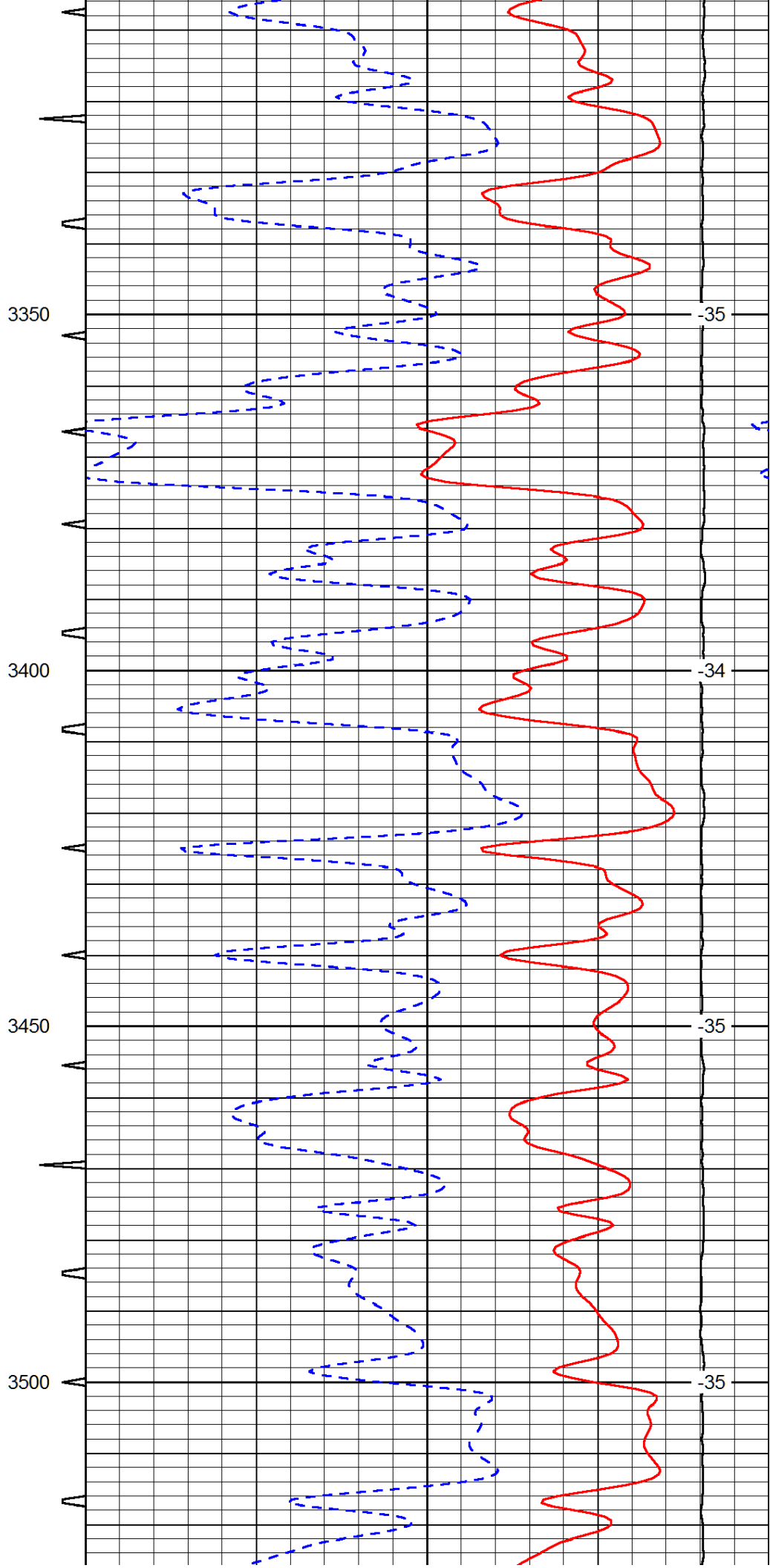
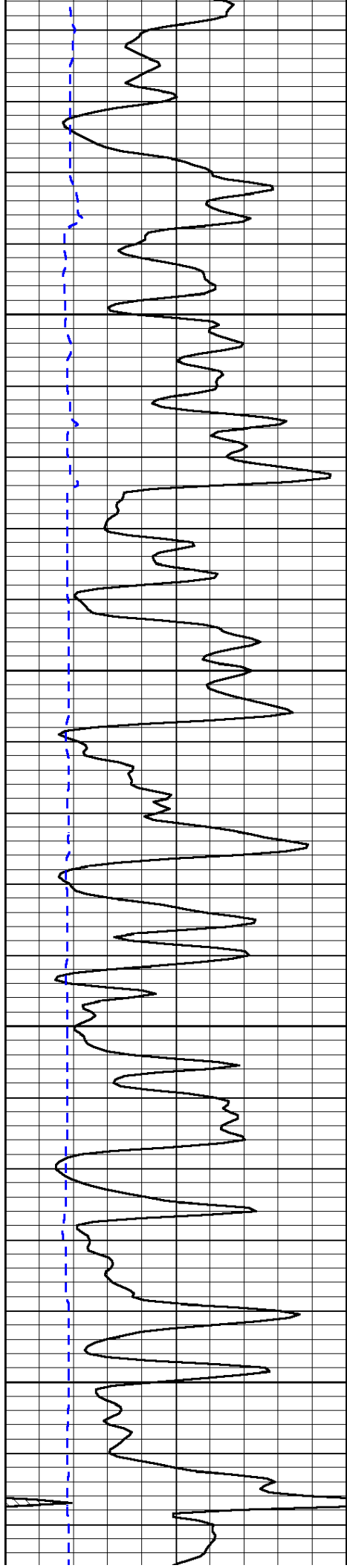


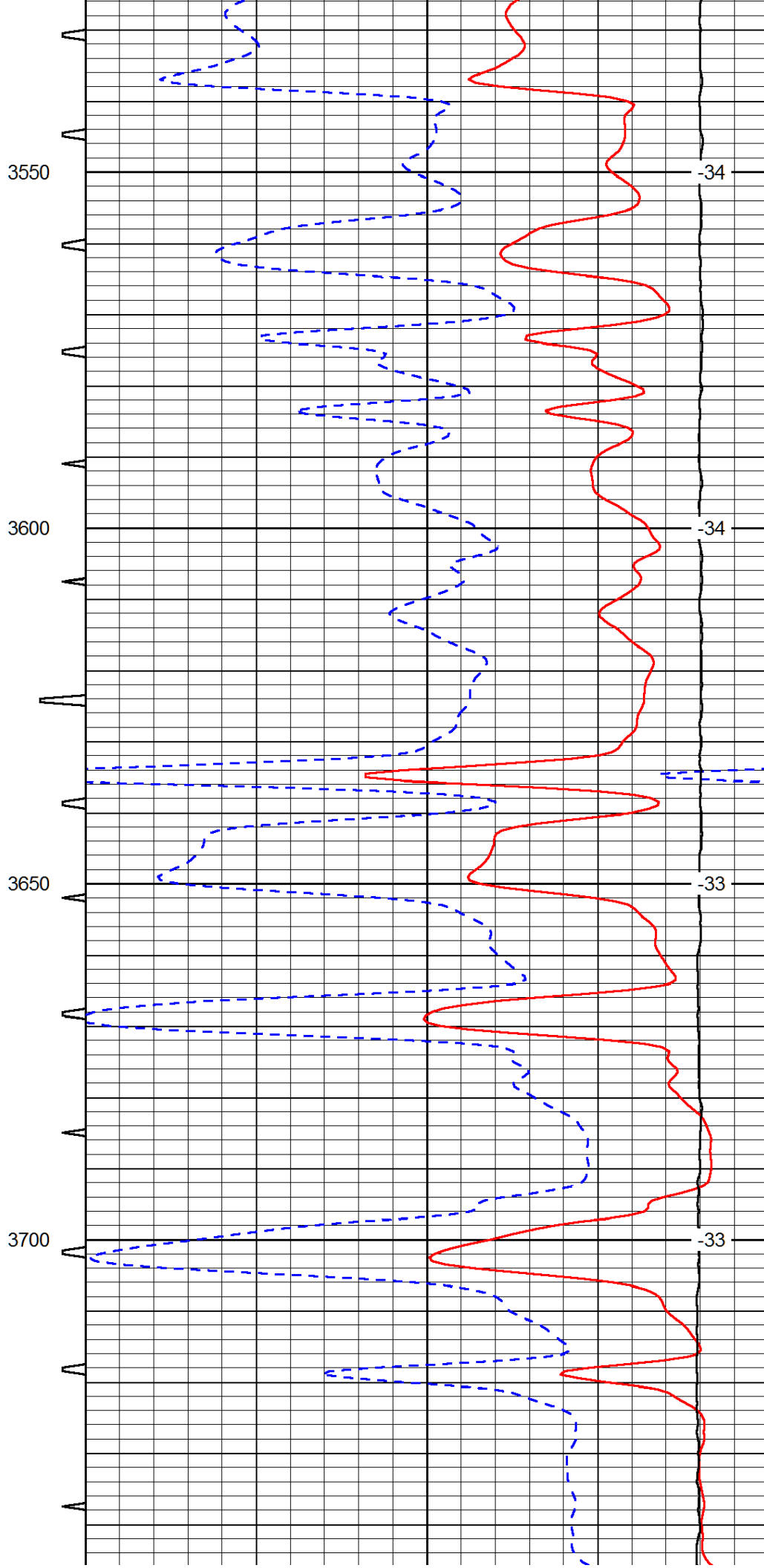
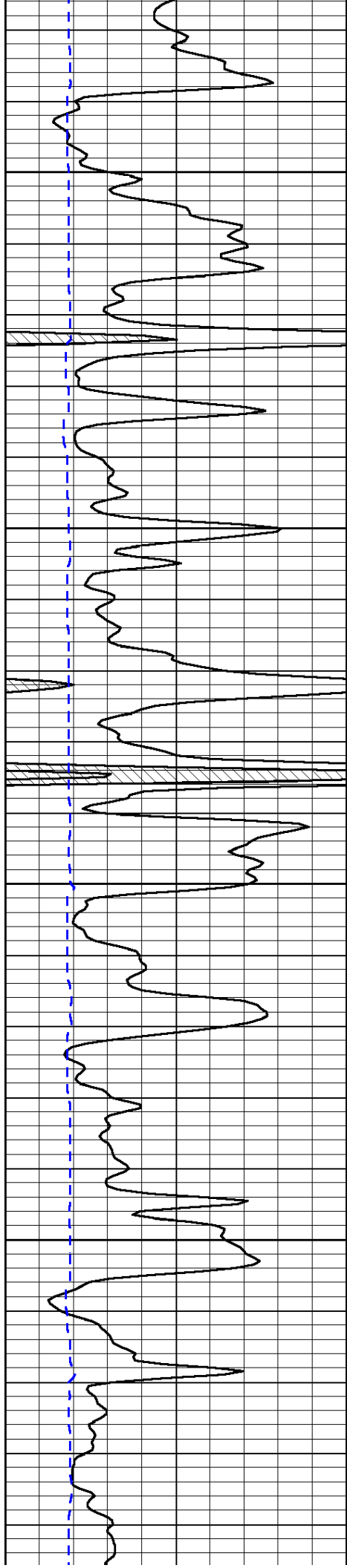


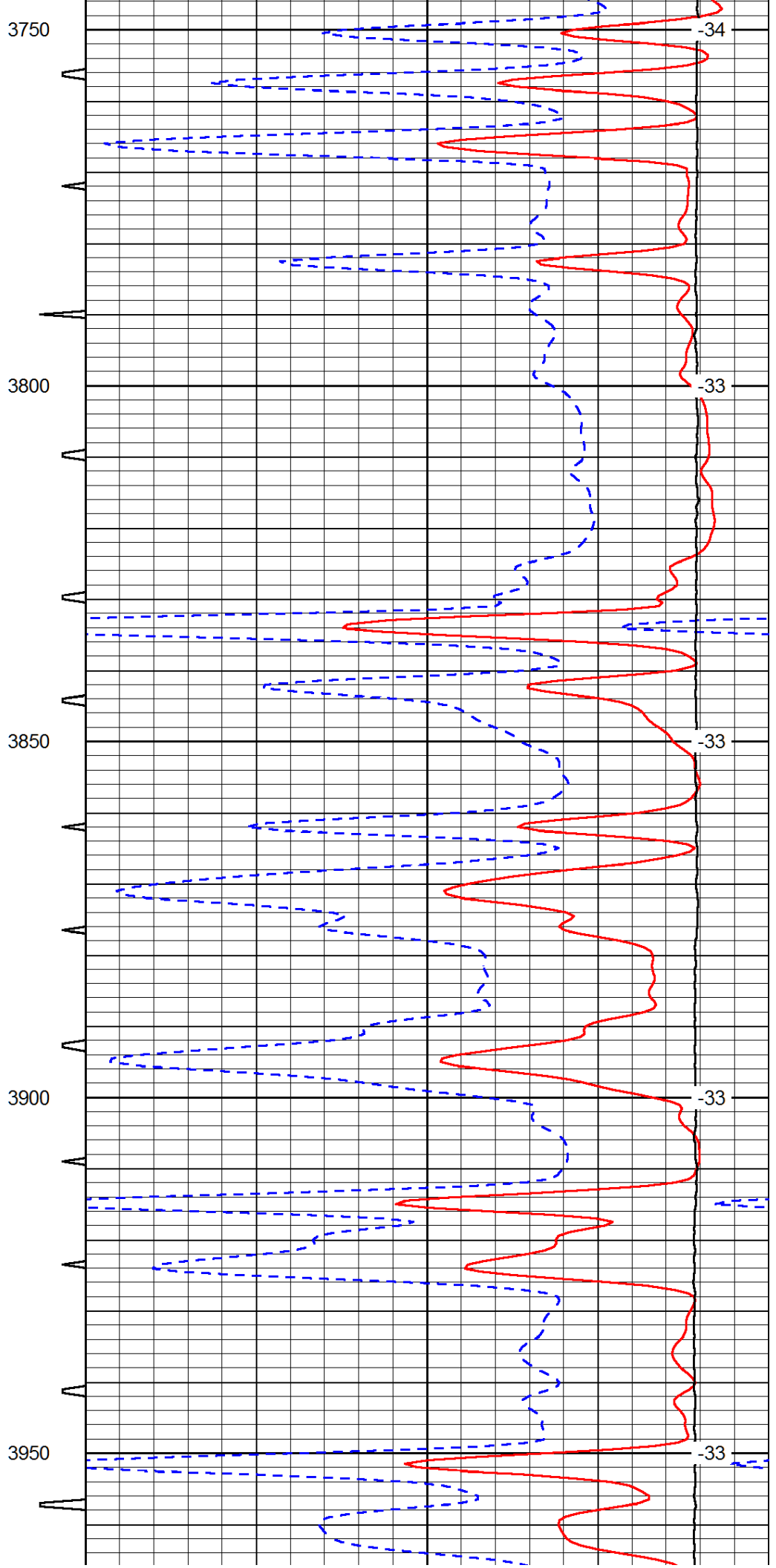
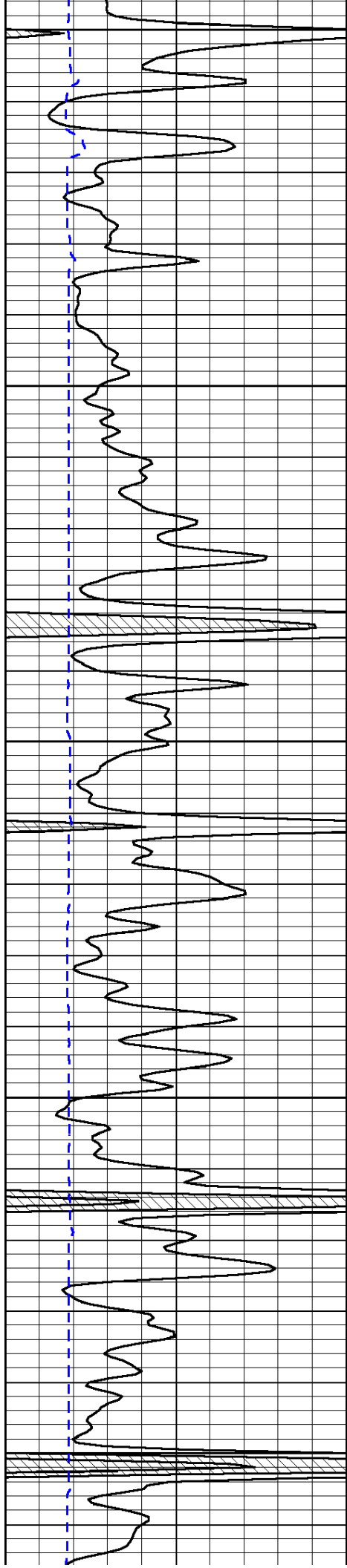


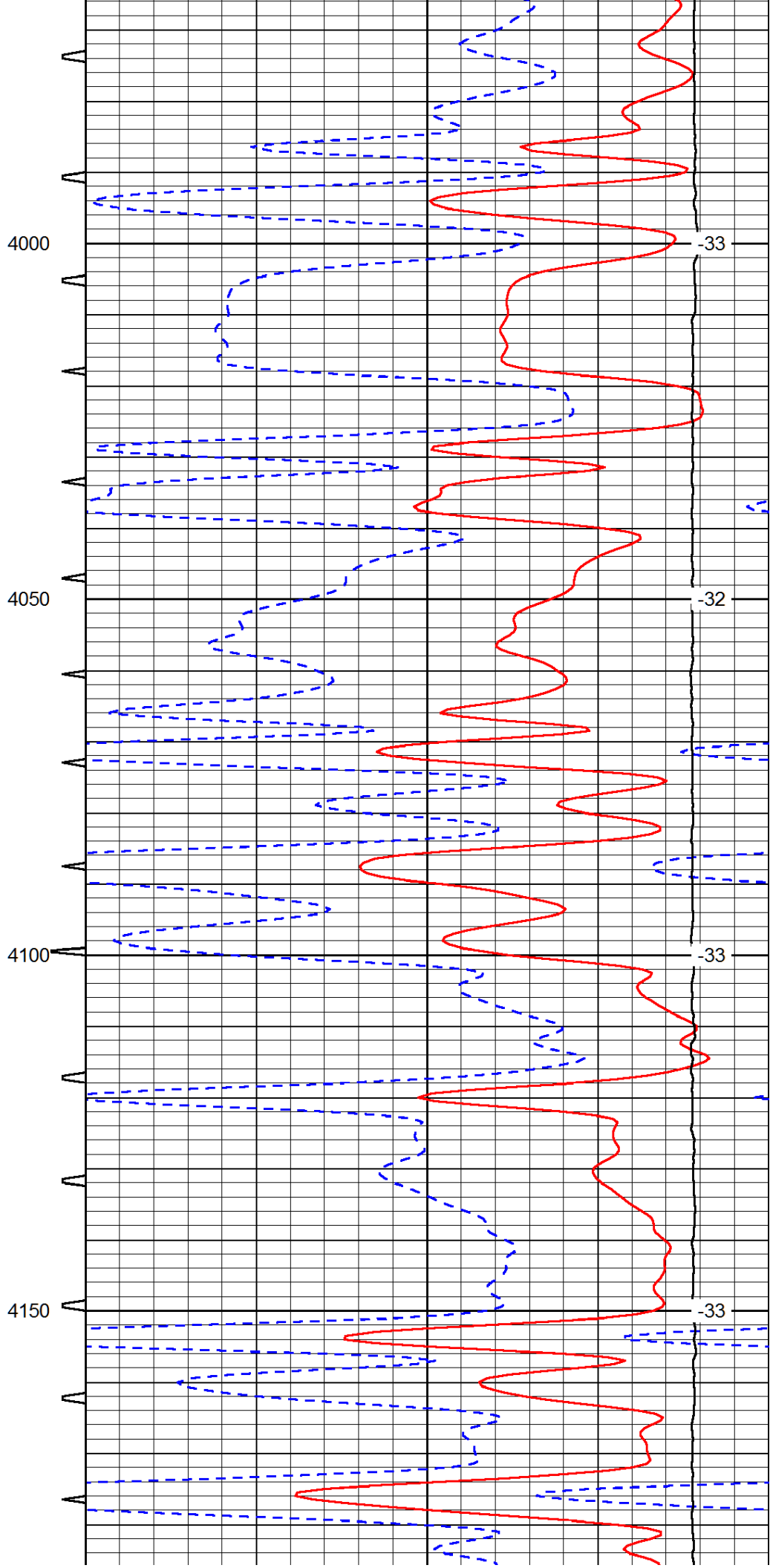
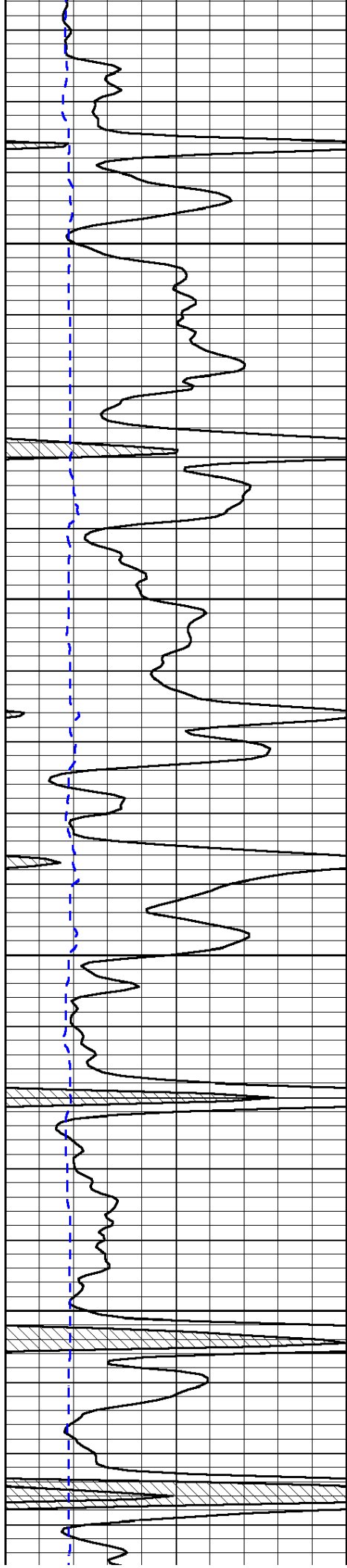


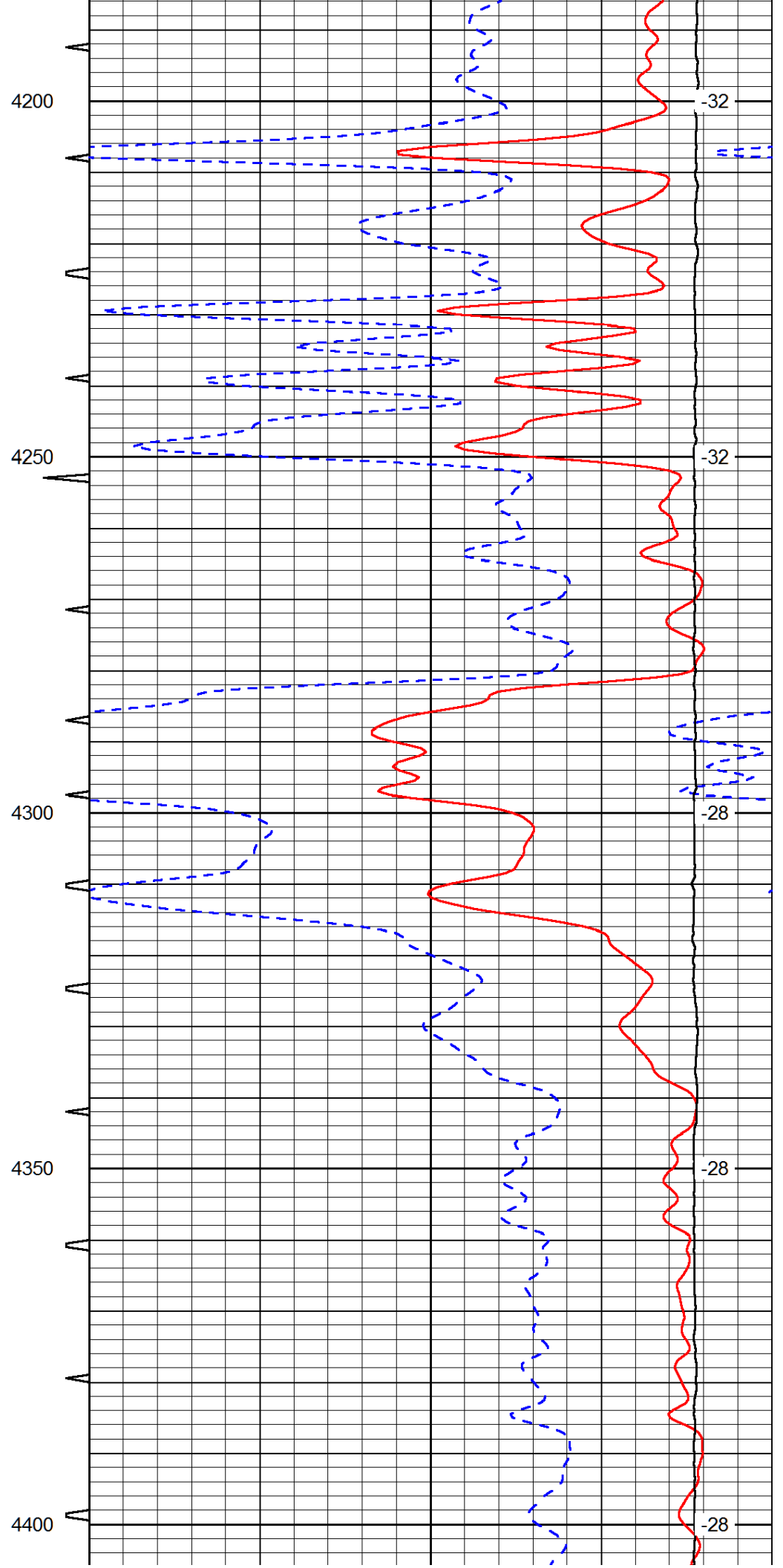
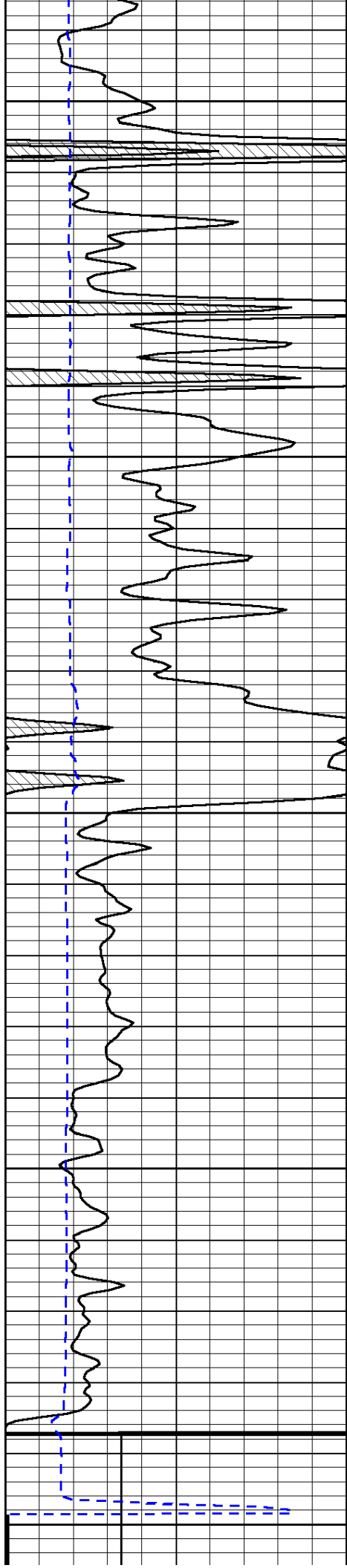


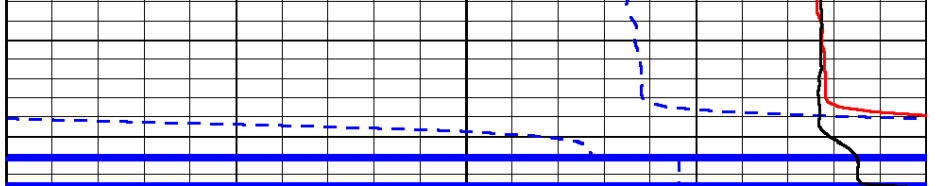
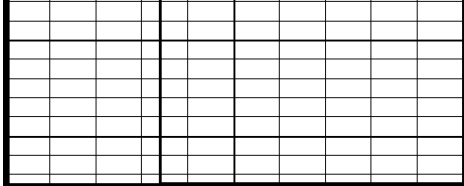












0	Gamma Ray	150	Sonic Int	140	Delta Time (usec/ft)	40	
150	Gamma Ray	300	5	0	30	Sonic Porosity	-10
6	dCAL (GAPI)	16		15000	LTEN (lb)	0	

LSPD