



Pioneer Energy Services

# Microresistivity Log

API No.	15-109-21328-00-00		
Company	Black Tea Oil, LLC		
Well	Hibbert A #2		
Field	Bridges		
County	Logan	State	Kansas
Location	2425' FNL & 335' FEL		
Sec: 27	Twp: 14S	Rge: 32W	
Permanent Datum	Ground Level	Elevation	2655
Log Measured From	Kelly Bushing	12 Ft. Above Perm. Datum	
Drilling Measured From	Kelly Bushing		
		Other Services	CN/CDL DIL/BHCS
		Elevation	K.B. 2667 D.F. 2655 G.L. 2655

Date	10/12/2014
Run Number	Two
Depth Driller	4420
Depth Logger	4420
Bottom Logged Interval	4419
Top Log Interval	3000
Casing Driller	8.625 @ 265
Casing Logger	264
Bit Size	7.875
Type Fluid in Hole	Chemical
Salinity, ppm CL	8000
Density / Viscosity	9.0 42
pH / Fluid Loss	10.5 7.2
Source of Sample	Flowline
Rm @ Meas. Temp	0.38 @ 60
Rmf @ Meas. Temp	0.28 @ 60
Rmc @ Meas. Temp	0.51 @ 60
Source of Rmf / Rmc	Charts
Rm @ BHT	0.19 @ 122
Operating Rig Time	5 Hours
Max Rec. Temp. F	122
Equipment Number	91
Location	Hays
Recorded By	D. Schmidt
Witnessed By	Richard Thomasson

<<< Fold Here >>>

All interpretations are opinions based on inferences from electrical or other measurements and we cannot and do not guarantee the accuracy or correctness of any interpretation, and we shall not, except in the case of gross or willful negligence on our part, be liable or responsible for any loss, costs, damages, or expenses incurred or sustained by anyone resulting from any interpretation made by any of our officers, agents or employees. These interpretations are also subject to our general terms and conditions set out in our current Price Schedule.

### Comments

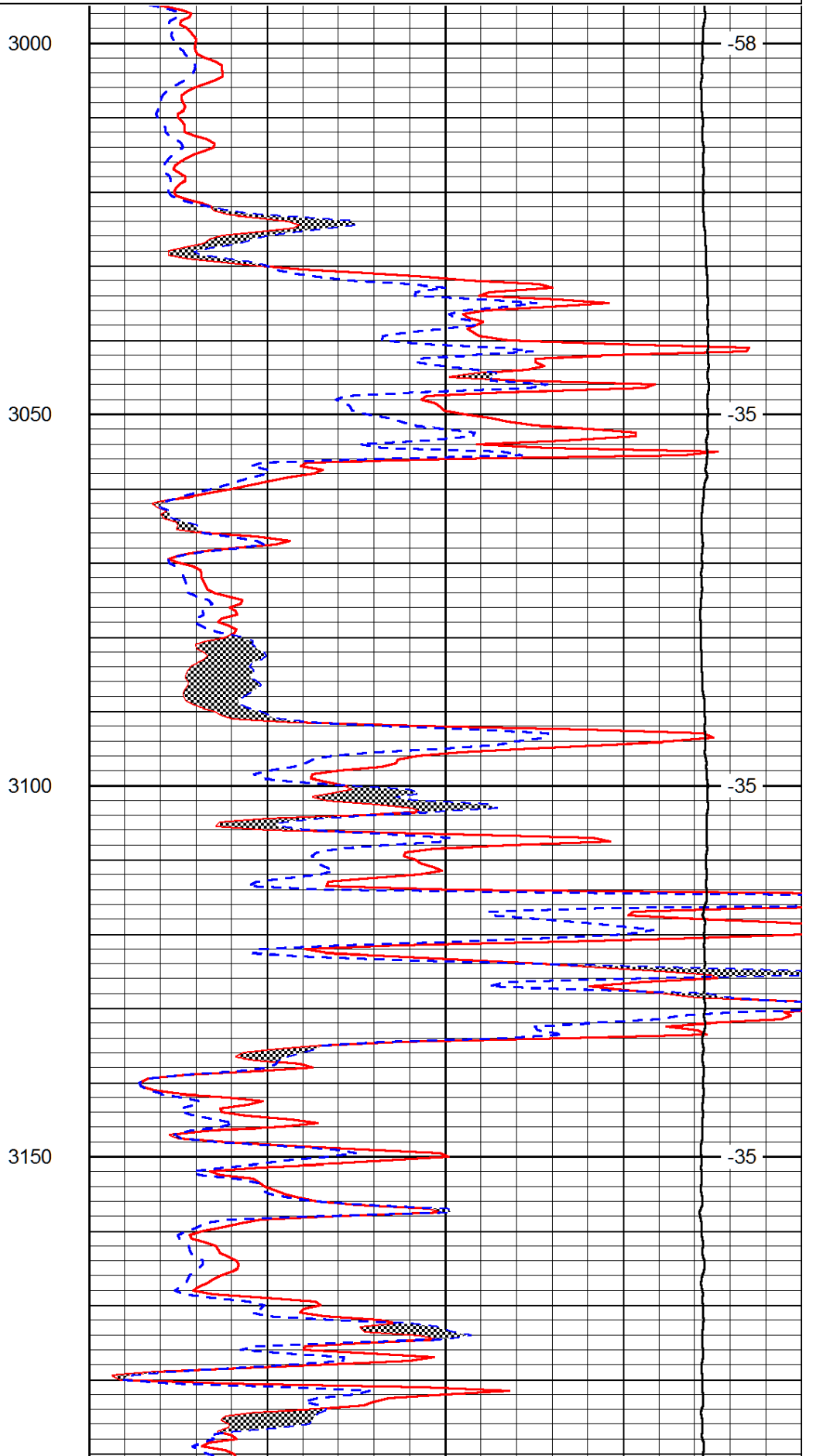
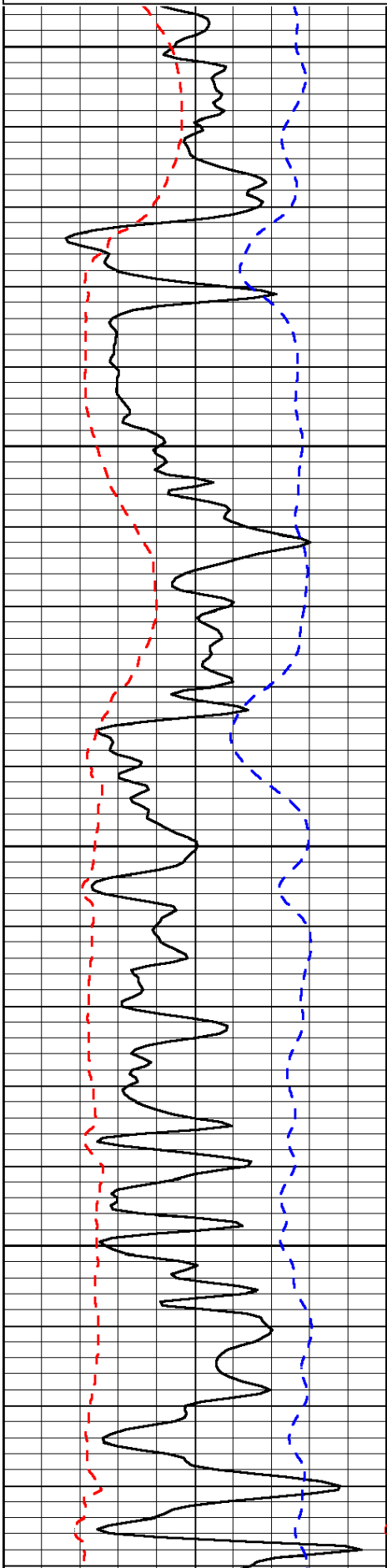
Thank you for using Log-Tech, Inc.  
 (785) 625-3858  
 Oakley,  
 South to Jayhawk Rd, 1 3/4 South,  
 West into gates,  
 North and East Into

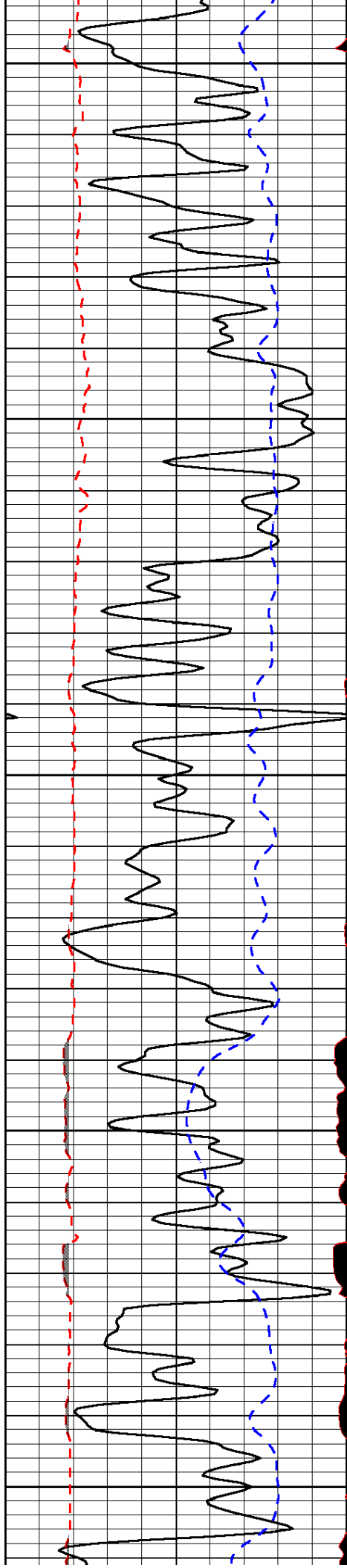
Database File: blacktea\_hibbert\_a\_2hd.db  
 Dataset Pathname: dil/btstkml  
 Presentation Format: micro  
 Dataset Creation: Sun Oct 12 10:10:52 2014  
 Charted by: Depth in Feet scaled 1:240

0	Gamma Ray	150
6	MCAL (GAPI)	16
2.875	Mud Cake (GAPI)	7.875
-200	SP (mV)	0

0	Micro Inverse 1 X 1	40
0	Micro Normal 2"	40
10000	Line Weight	0

LSPD





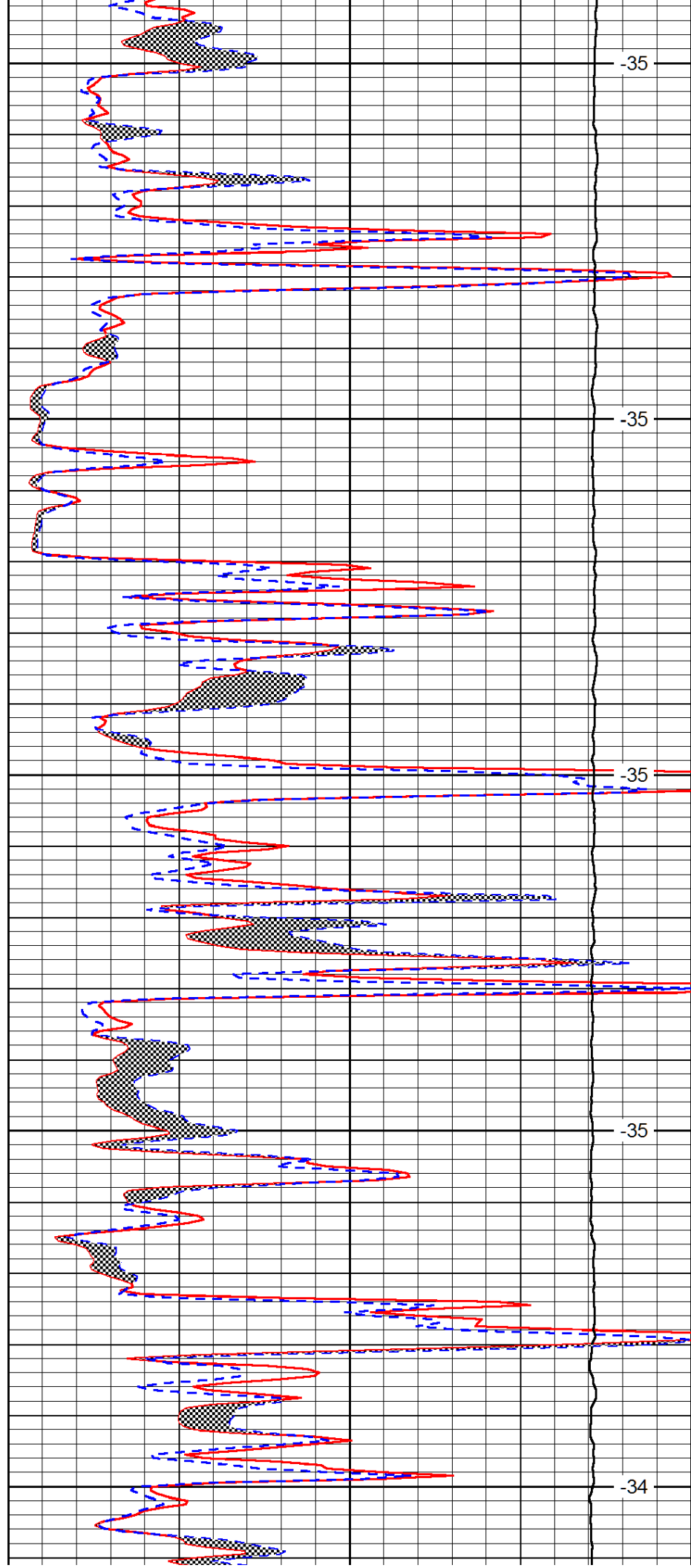
3200

3250

3300

3350

3400



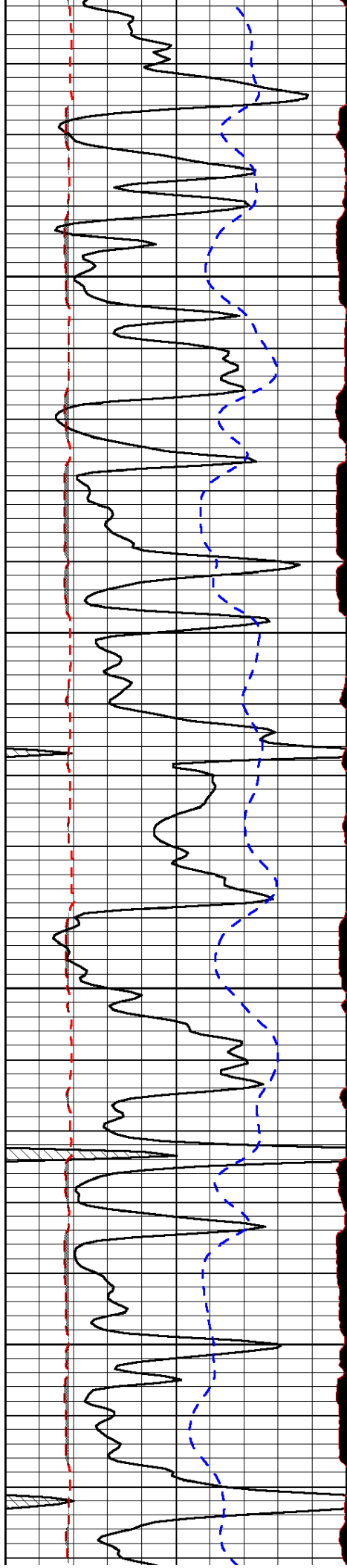
-35

-35

-35

-35

-34

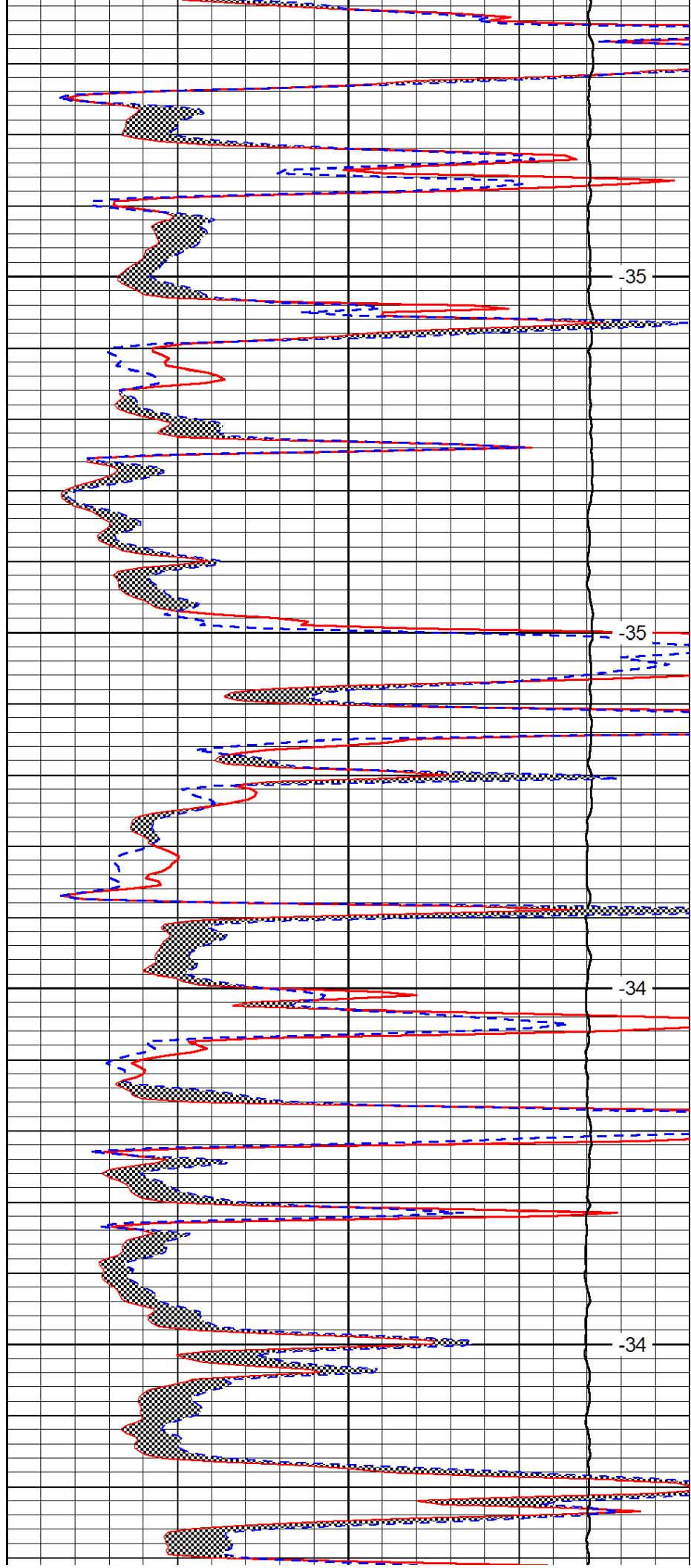


3450

3500

3550

3600

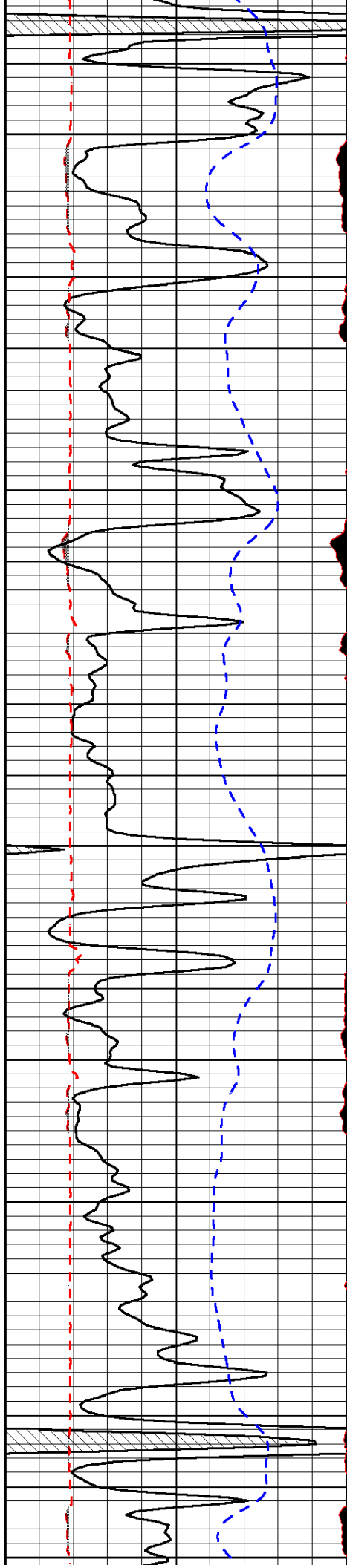


-35

-35

-34

-34



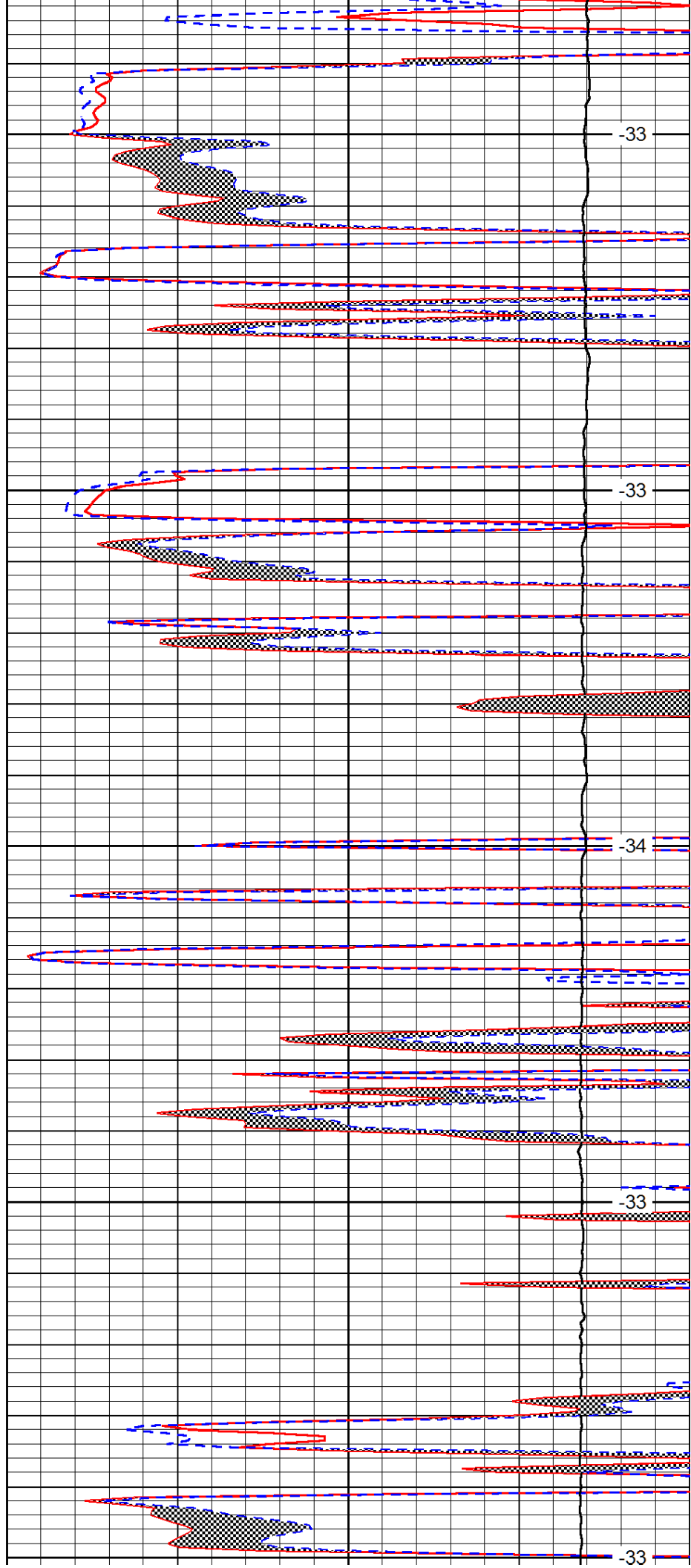
3650

3700

3750

3800

3850



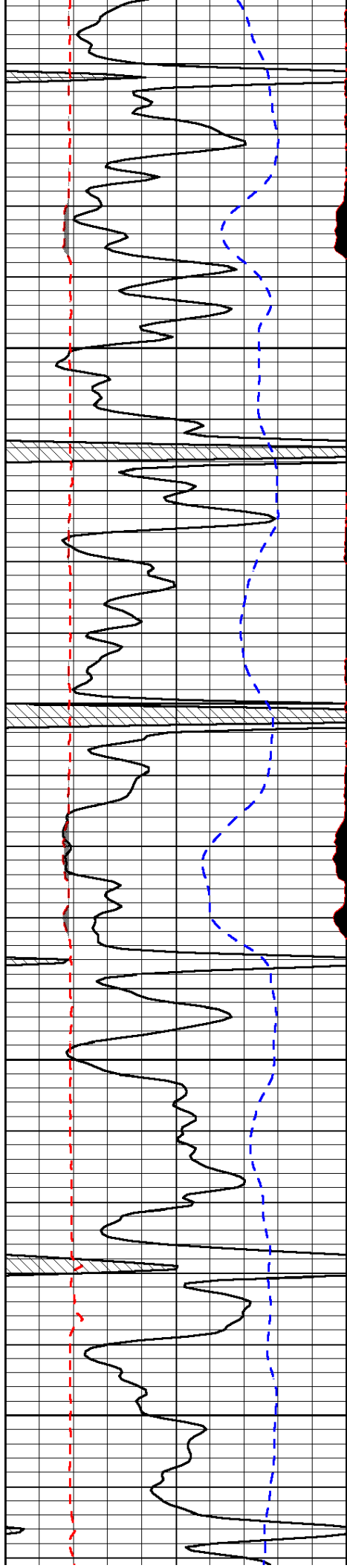
-33

-33

-34

-33

-33

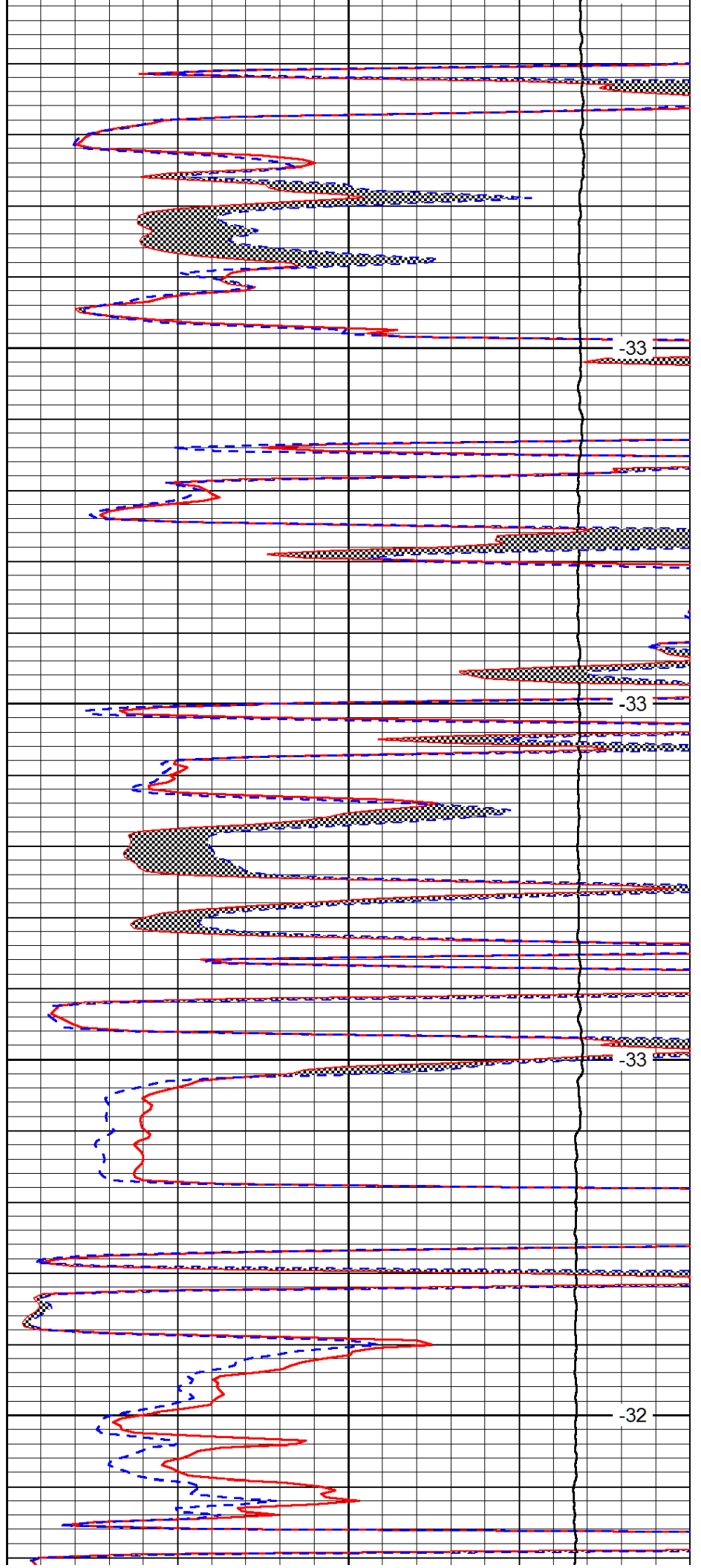


3900

3950

4000

4050

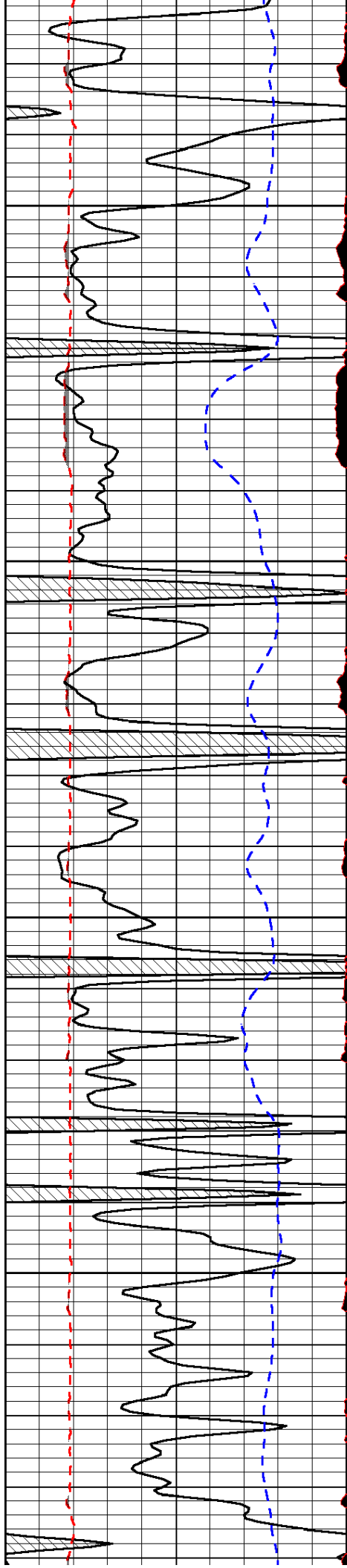


-33

-33

-33

-32

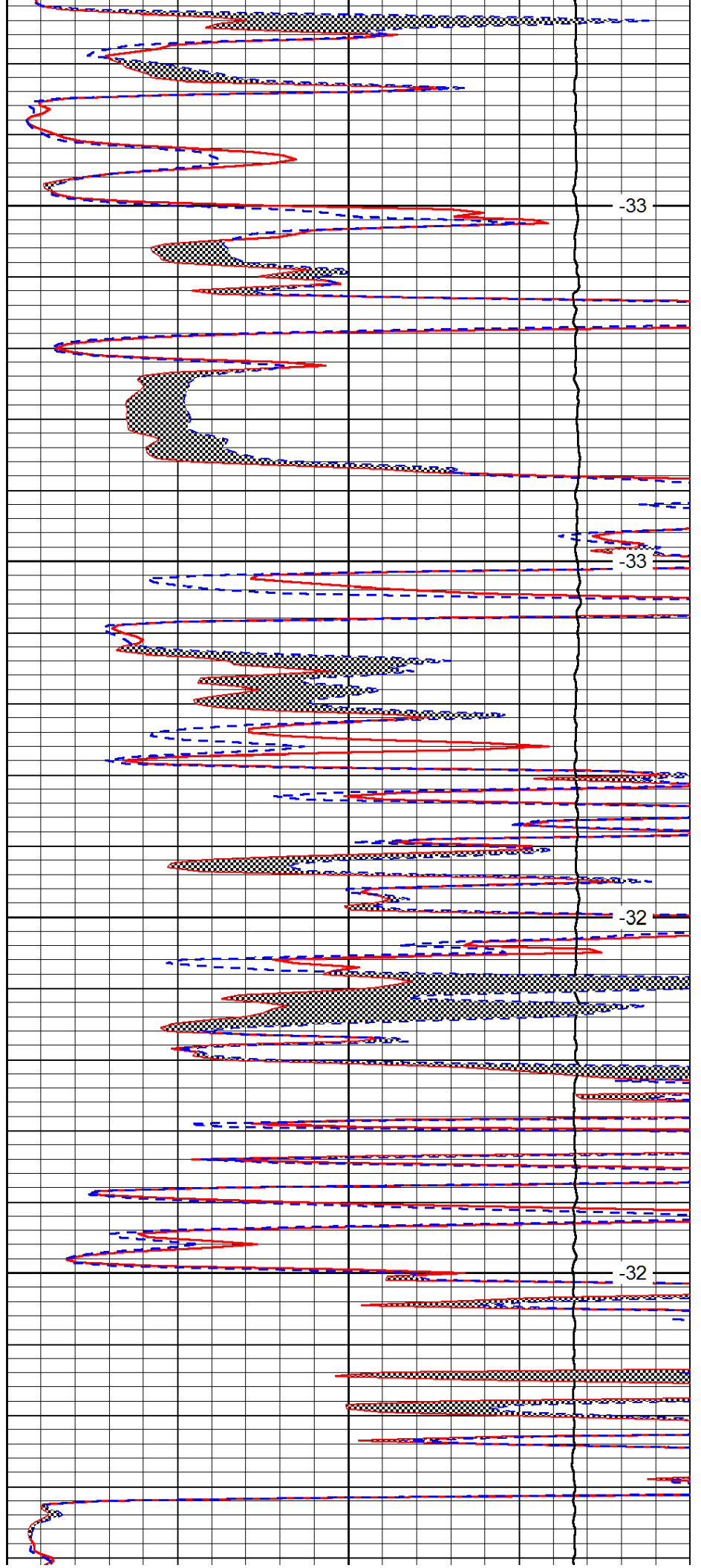


4100

4150

4200

4250

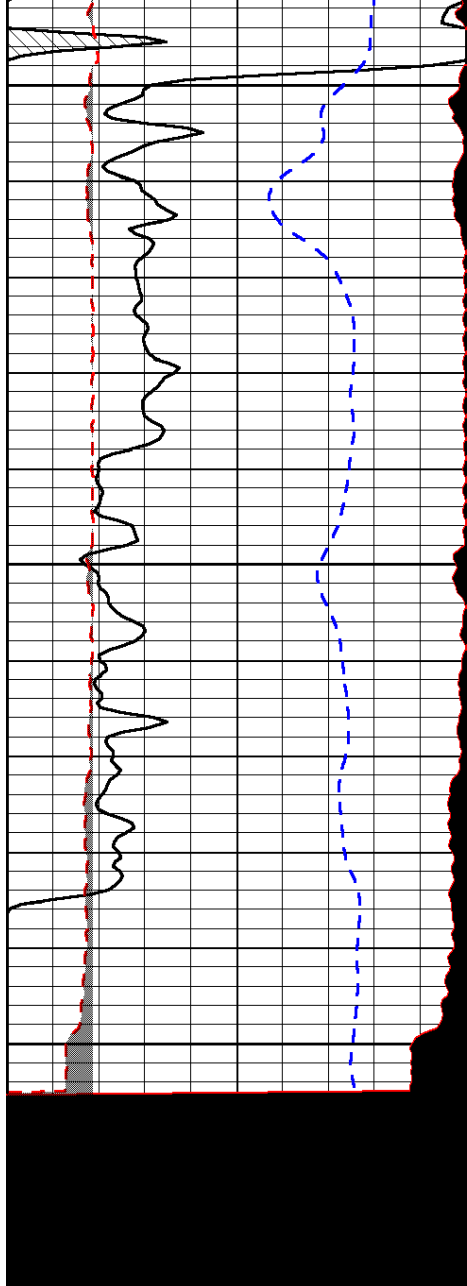


-33

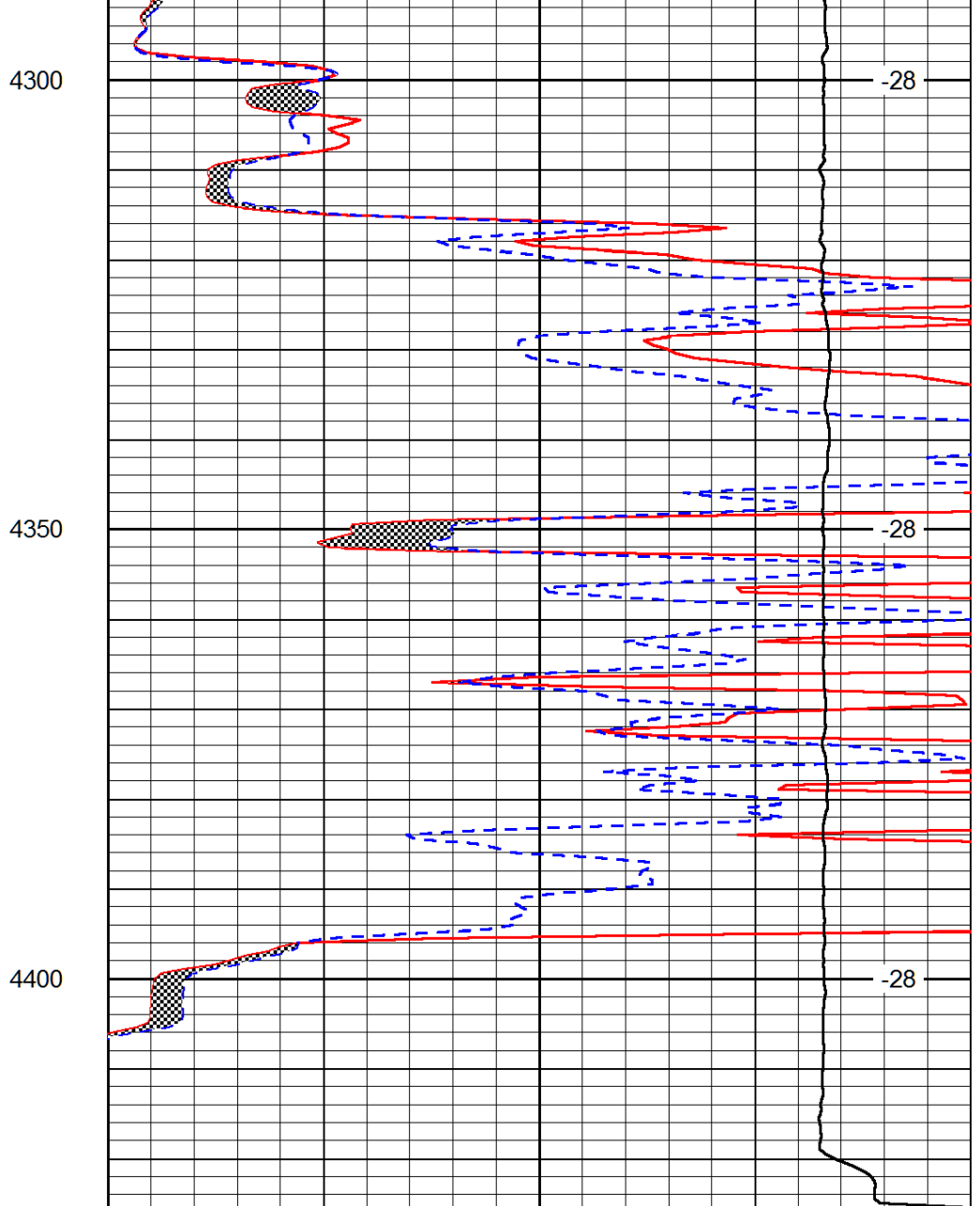
-33

-32

-32



0	Gamma Ray	150
6	MCAL (GAPI)	16
2.875	Mud Cake (GAPI)	7.875
-200	SP (mV)	0



0	Micro Inverse 1 X 1	40
0	Micro Normal 2''	40
10000	Line Weight	0

LSPD