



Pioneer Energy Services

Dual Induction Log

API No.	15-109-21328-00-00	
Company	Black Tea Oil, LLC	
Well	Hibbert A #2	
Field	Bridges	
County	Logan	State
		Kansas
Location	2425' FNL & 335' FEL	
Sec: 27	Twp: 14S	Rge: 32W
Permanent Datum	Ground Level	Elevation 2655
Log Measured From	Kelly Bushing	12 Ft. Above Perm. Datum
Drilling Measured From	Kelly Bushing	
		Other Services CNL/CDL MEL/BHCS
		Elevation K.B. 2667 D.F. 2655 G.L. 2655

Date	10/12/2014
Run Number	One
Depth Driller	4420
Depth Logger	4420
Bottom Logged Interval	4419
Top Log Interval	250
Casing Driller	8.625 @ 265
Casing Logger	264
Bit Size	7.875
Type Fluid in Hole	Chemical
Salinity, ppm CL	8000
Density / Viscosity	9.0 42
pH / Fluid Loss	10.5 7.2
Source of Sample	Flowline
Rm @ Meas. Temp	0.38 @ 60
Rmf @ Meas. Temp	0.28 @ 60
Rmc @ Meas. Temp	0.51 @ 60
Source of Rmf / Rmc	Charts
Rm @ BHT	0.19 @ 122
Operating Rig Time	5 Hours
Max Rec. Temp. F	122
Equipment Number	91
Location	Hays
Recorded By	D. Schmidt
Witnessed By	Richard Thomasson

<<< Fold Here >>>

All interpretations are opinions based on inferences from electrical or other measurements and we cannot and do not guarantee the accuracy or correctness of any interpretation, and we shall not, except in the case of gross or willful negligence on our part, be liable or responsible for any loss, costs, damages, or expenses incurred or sustained by anyone resulting from any interpretation made by any of our officers, agents or employees. These interpretations are also subject to our general terms and conditions set out in our current Price Schedule.

Comments

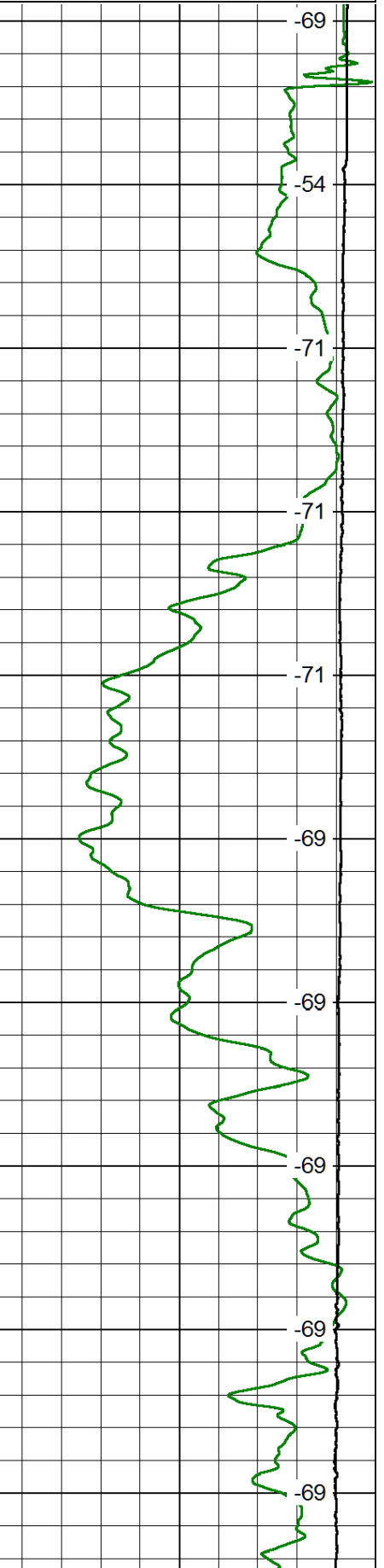
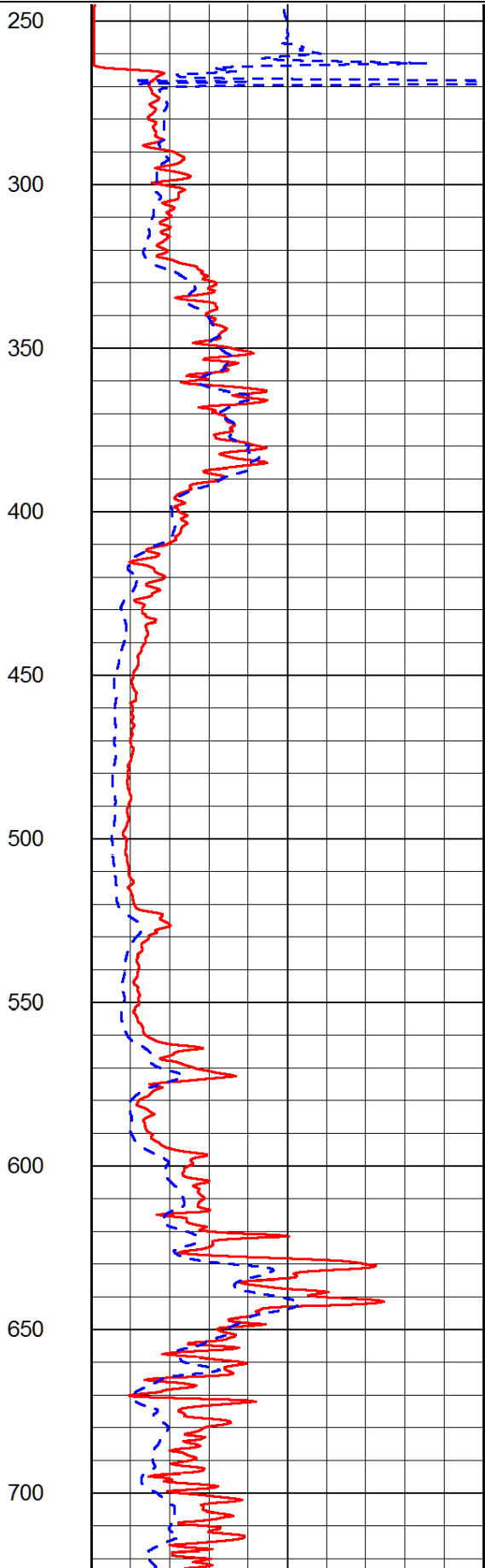
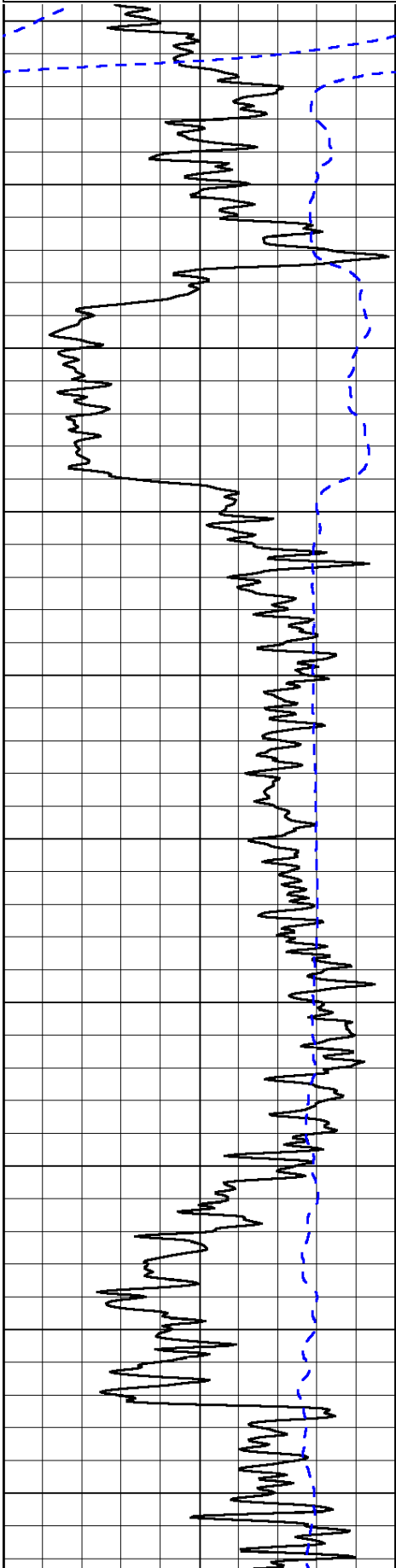
Thank you for using Log-Tech, Inc.
 (785) 625-3858
 Oakley,
 South to Jayhawk Rd, 1 3/4 South,
 West into gates,
 North and East Into

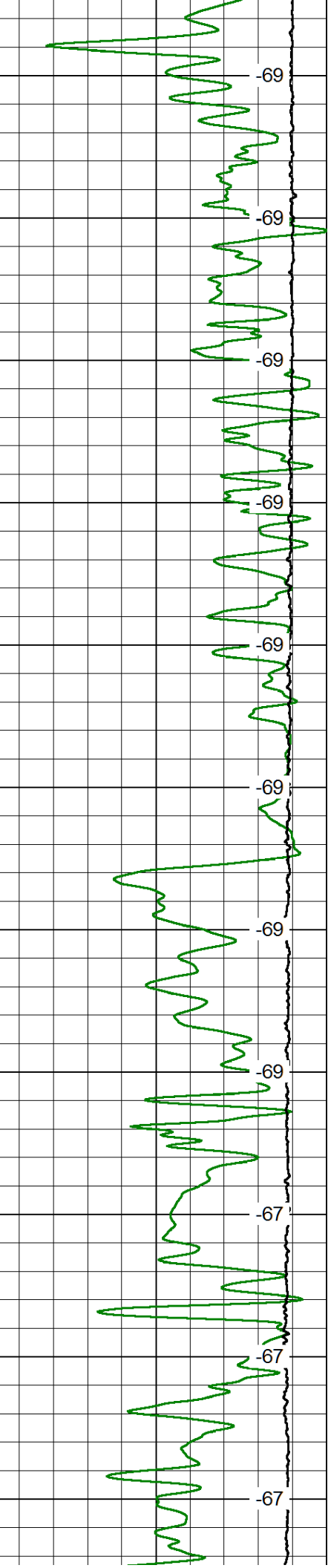
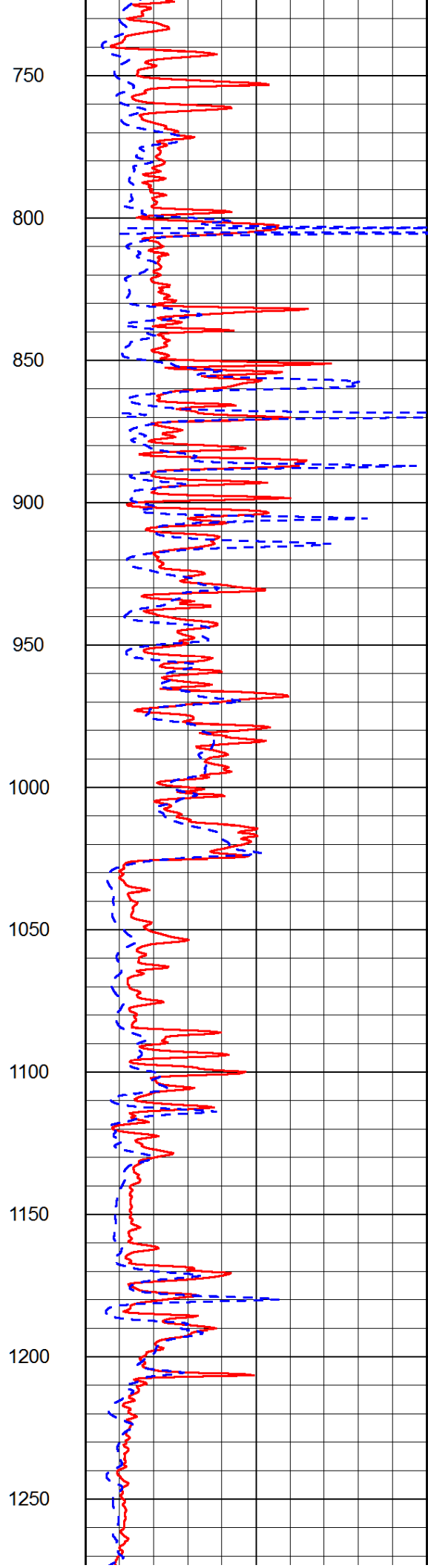
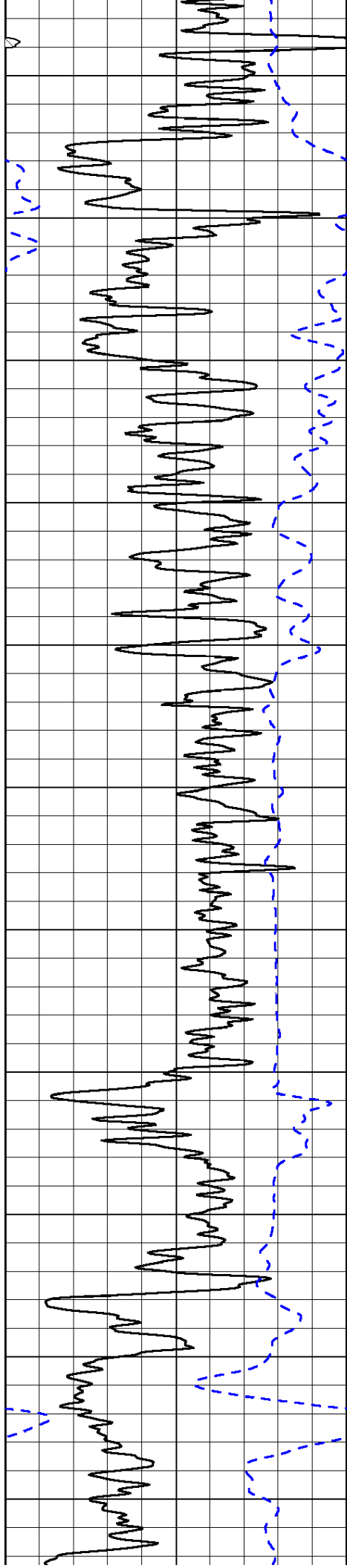
Database File: blacktea_hibbert_a_2hd.db
 Dataset Pathname: dil/btstkml
 Presentation Format: dil2in
 Dataset Creation: Sun Oct 12 10:10:52 2014
 Charted by: Depth in Feet scaled 1:600

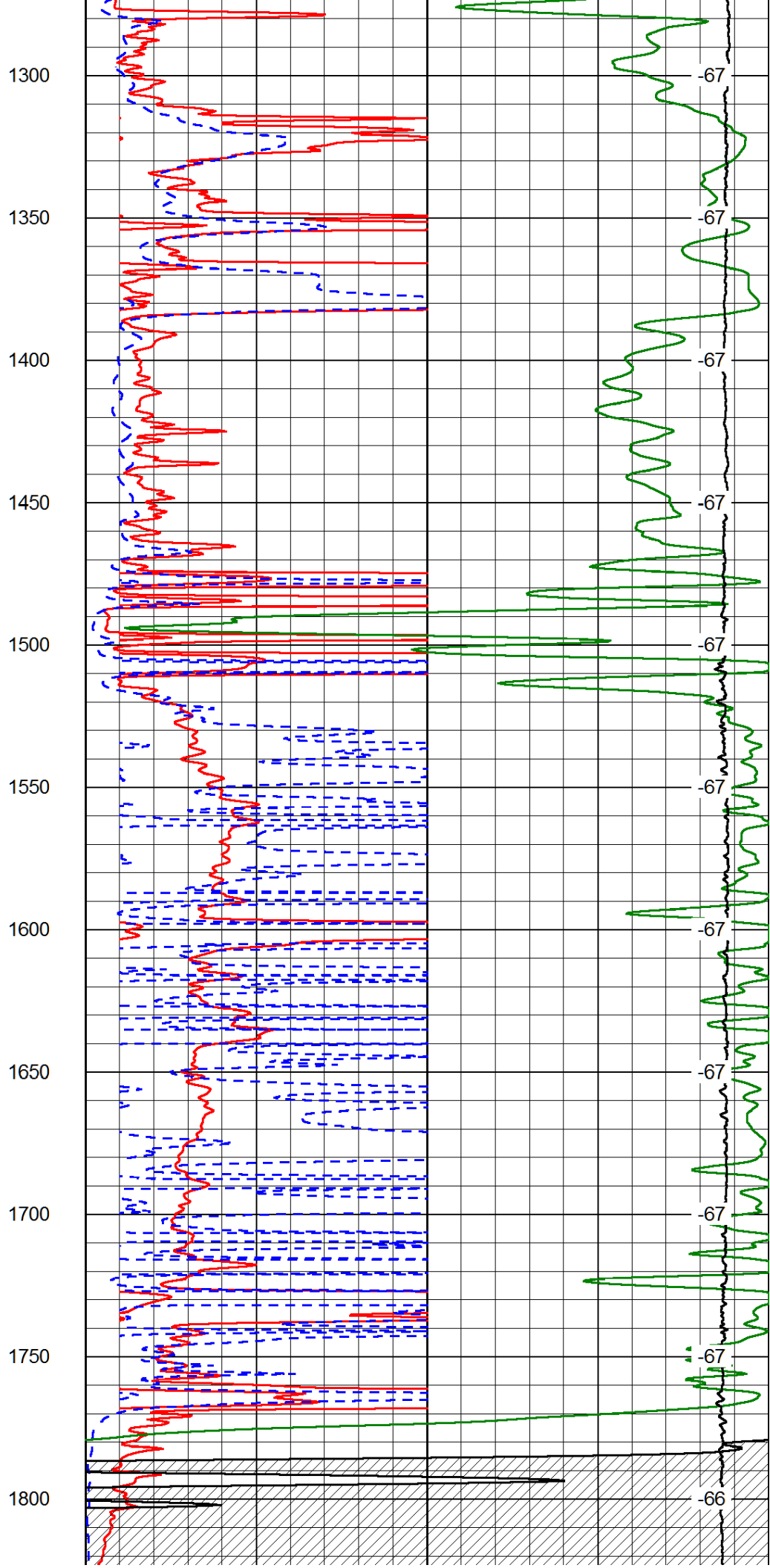
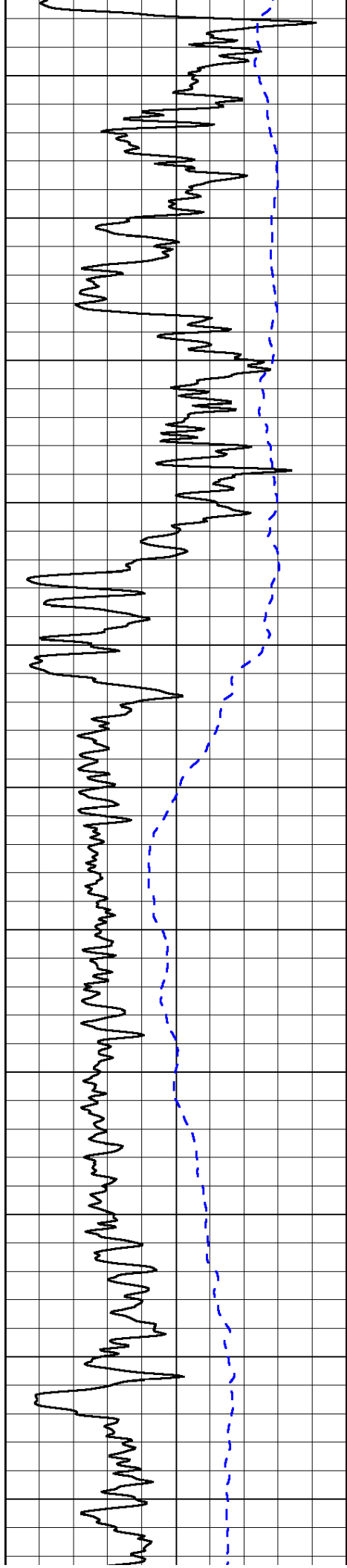
0	Gamma Ray	150
-200	SP (mV)	0

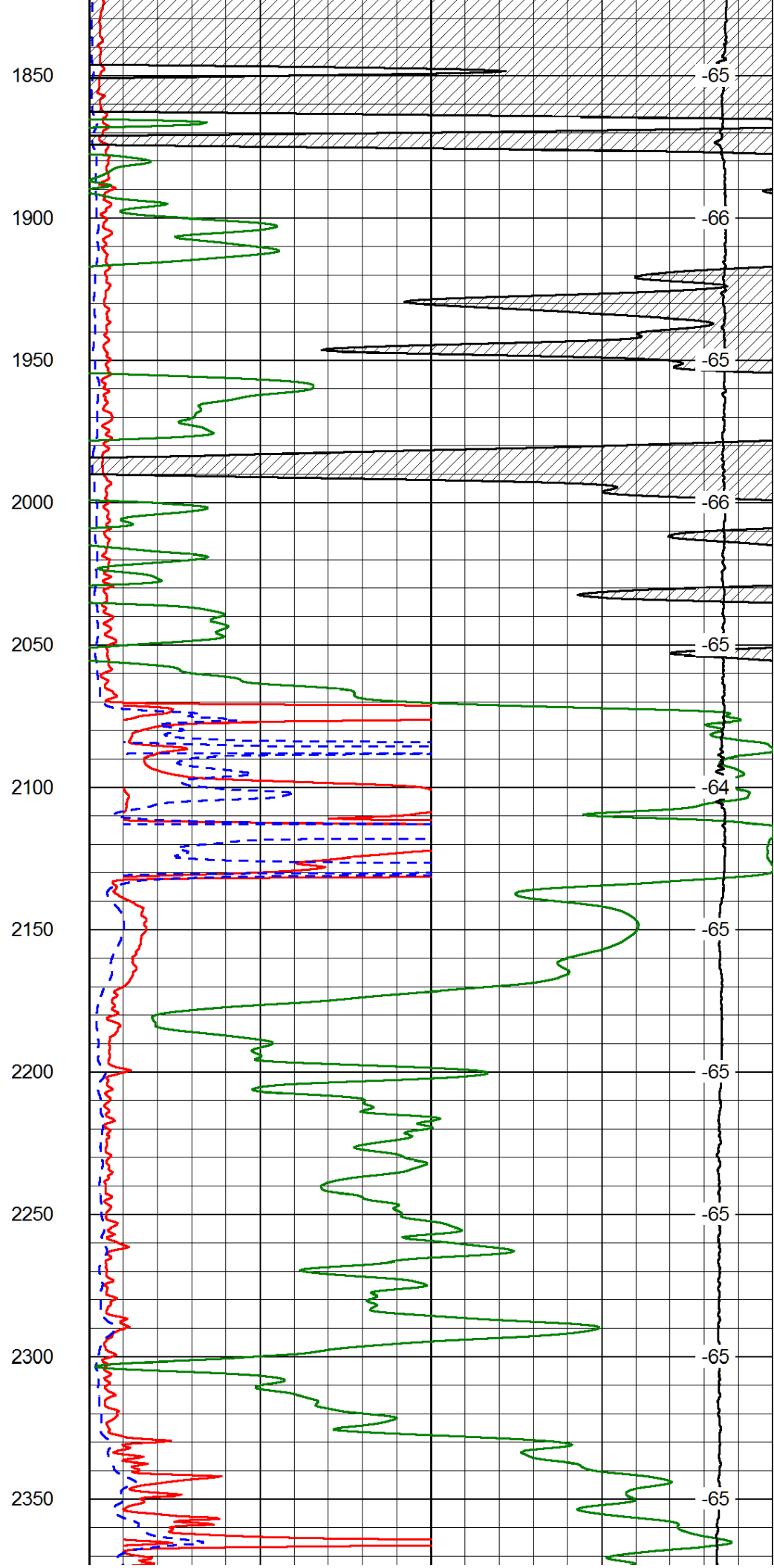
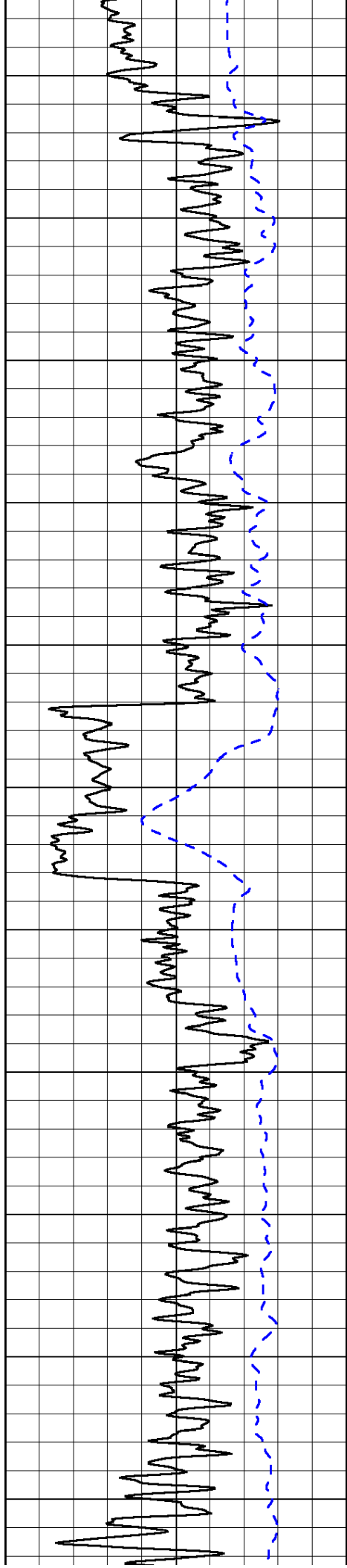
0	Shallow Resistivity	50
0	Deep Resistivity	50
1000	Conductivity	0
15000	Line Tension	0
50	Shallow Resistivity	500
50	Deep Resistivity	500

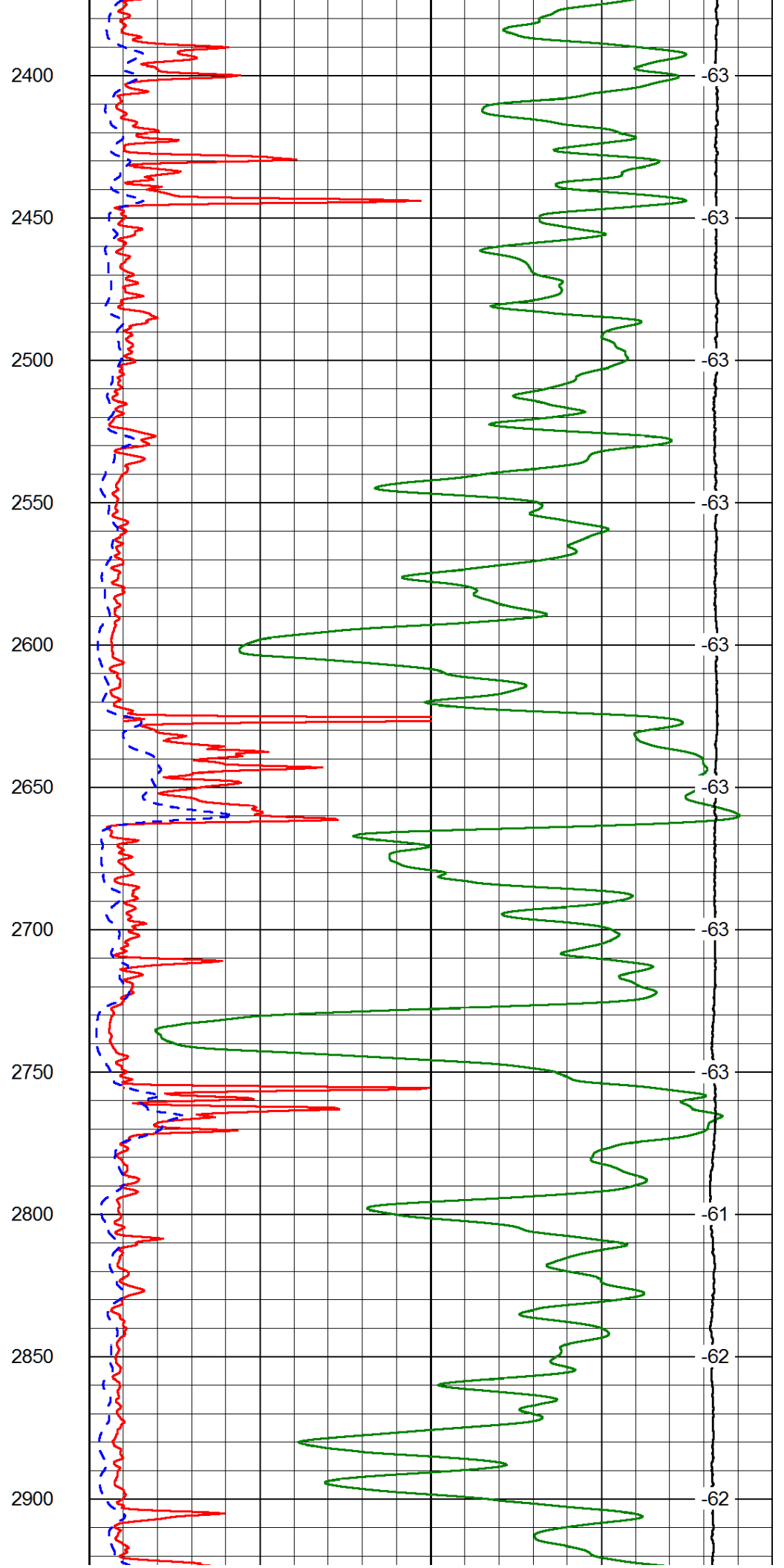
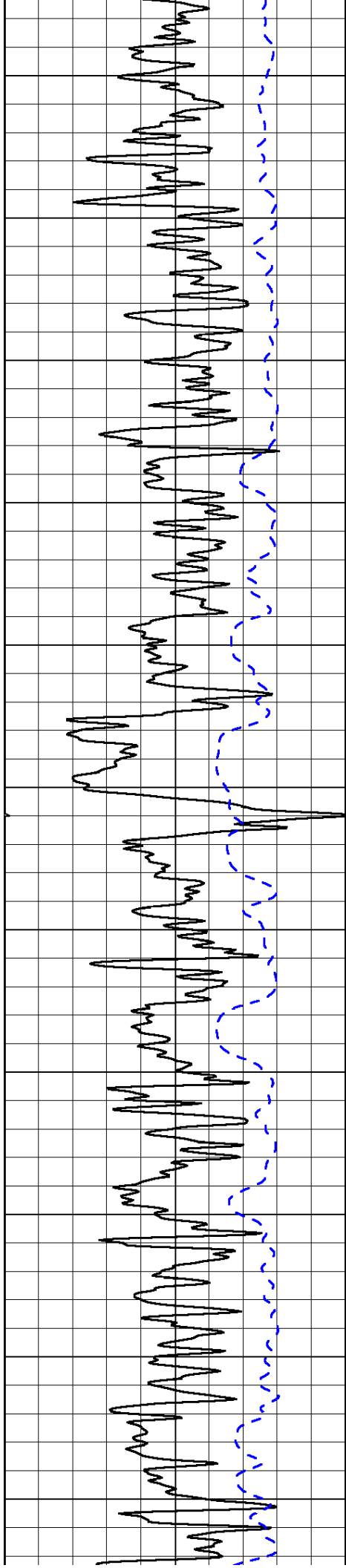
LSPD	0
------	---

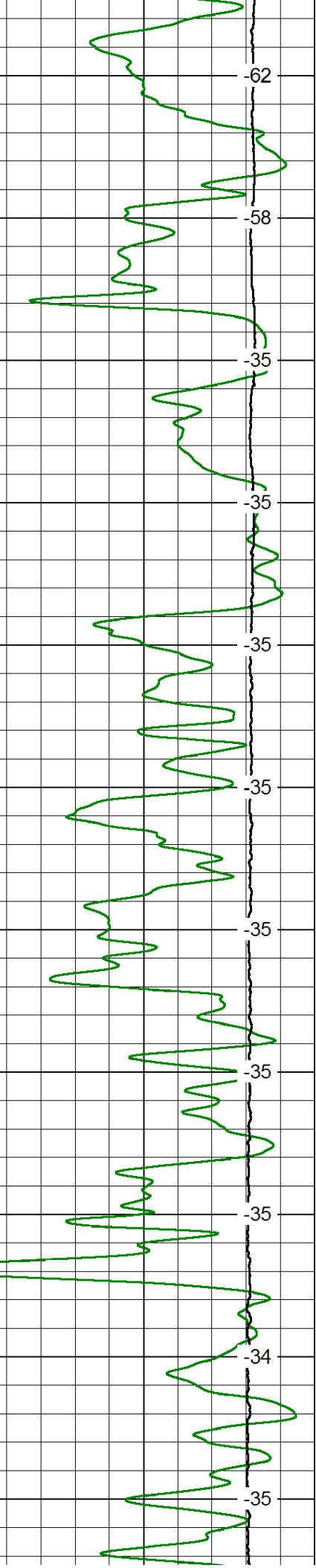
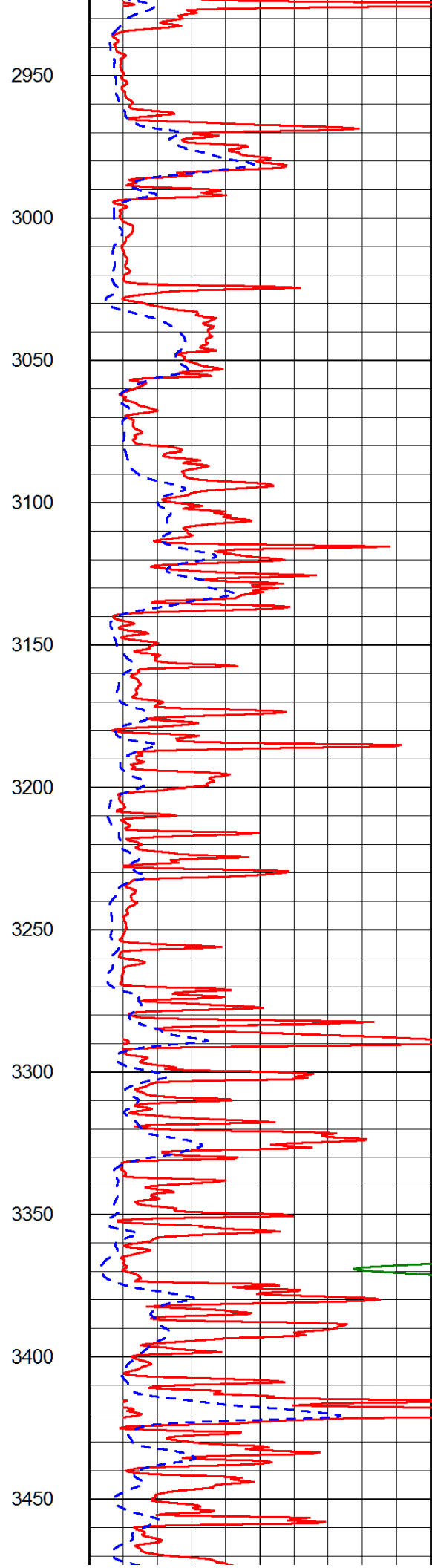
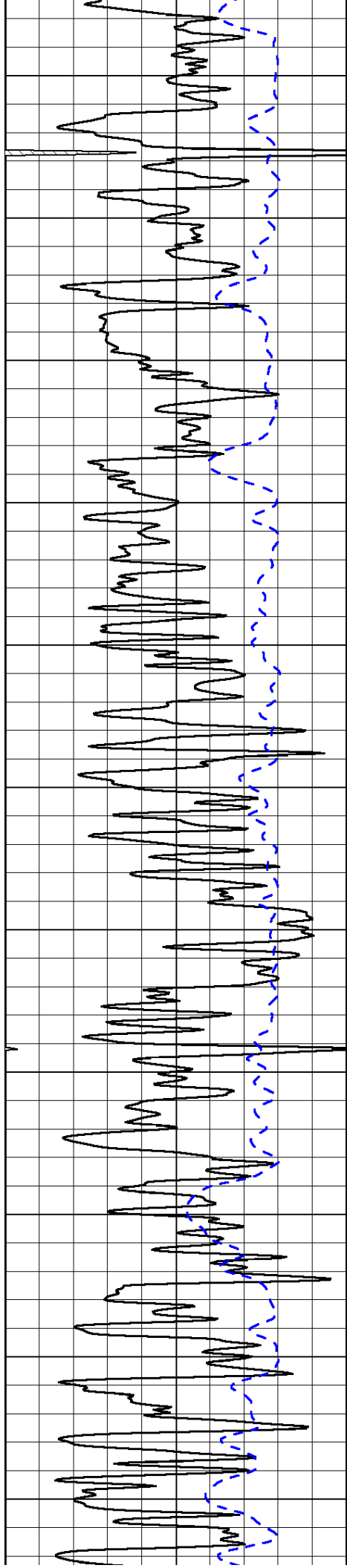


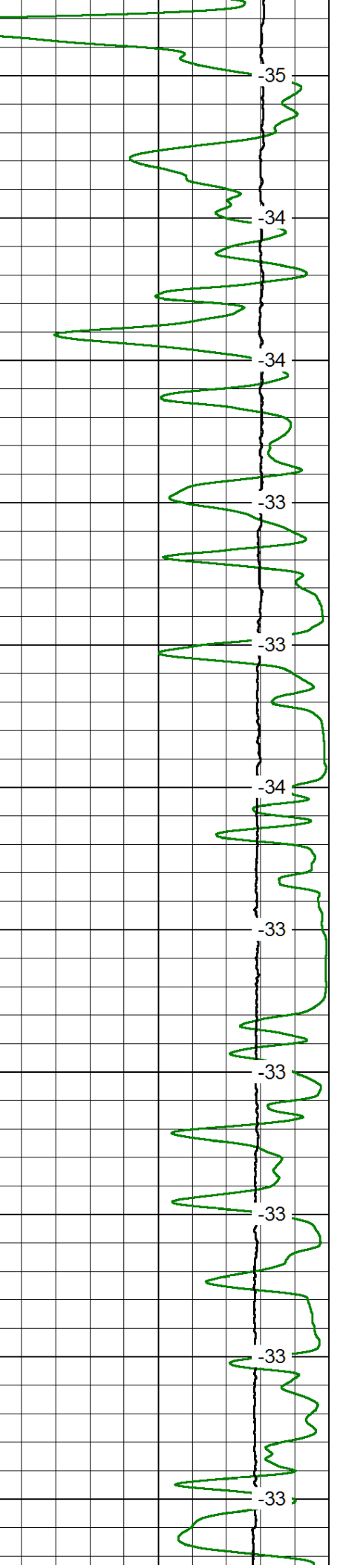
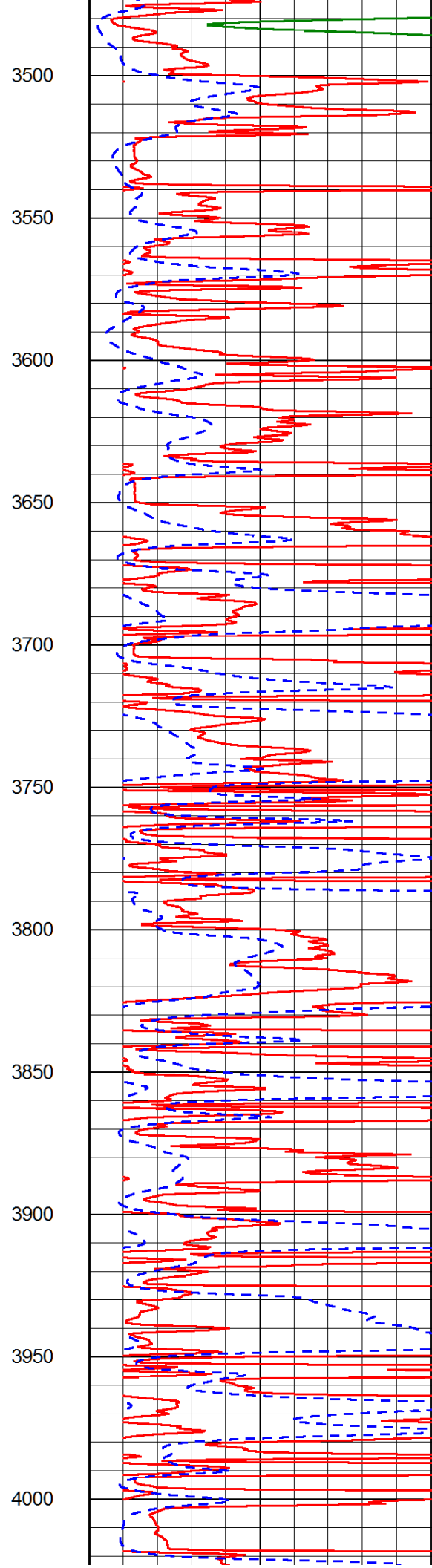
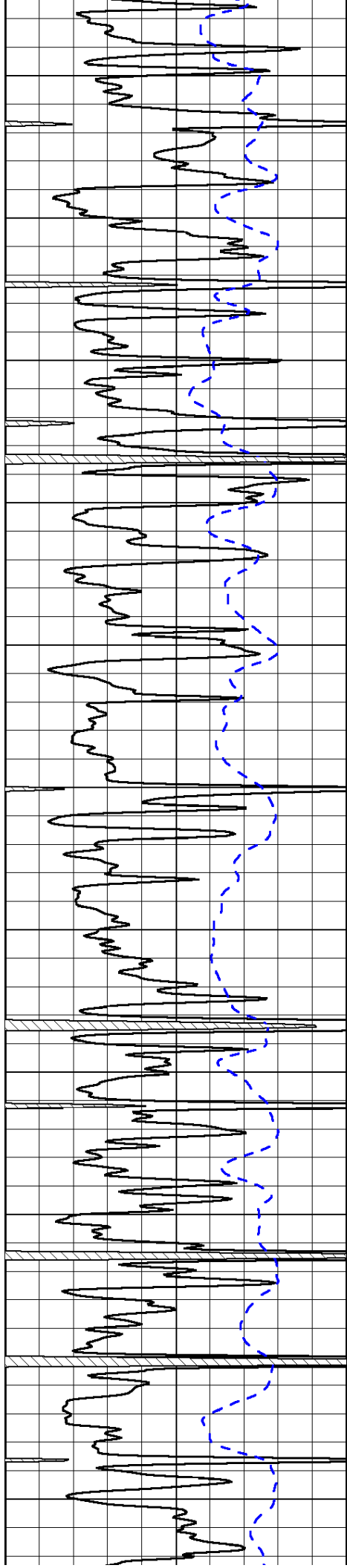


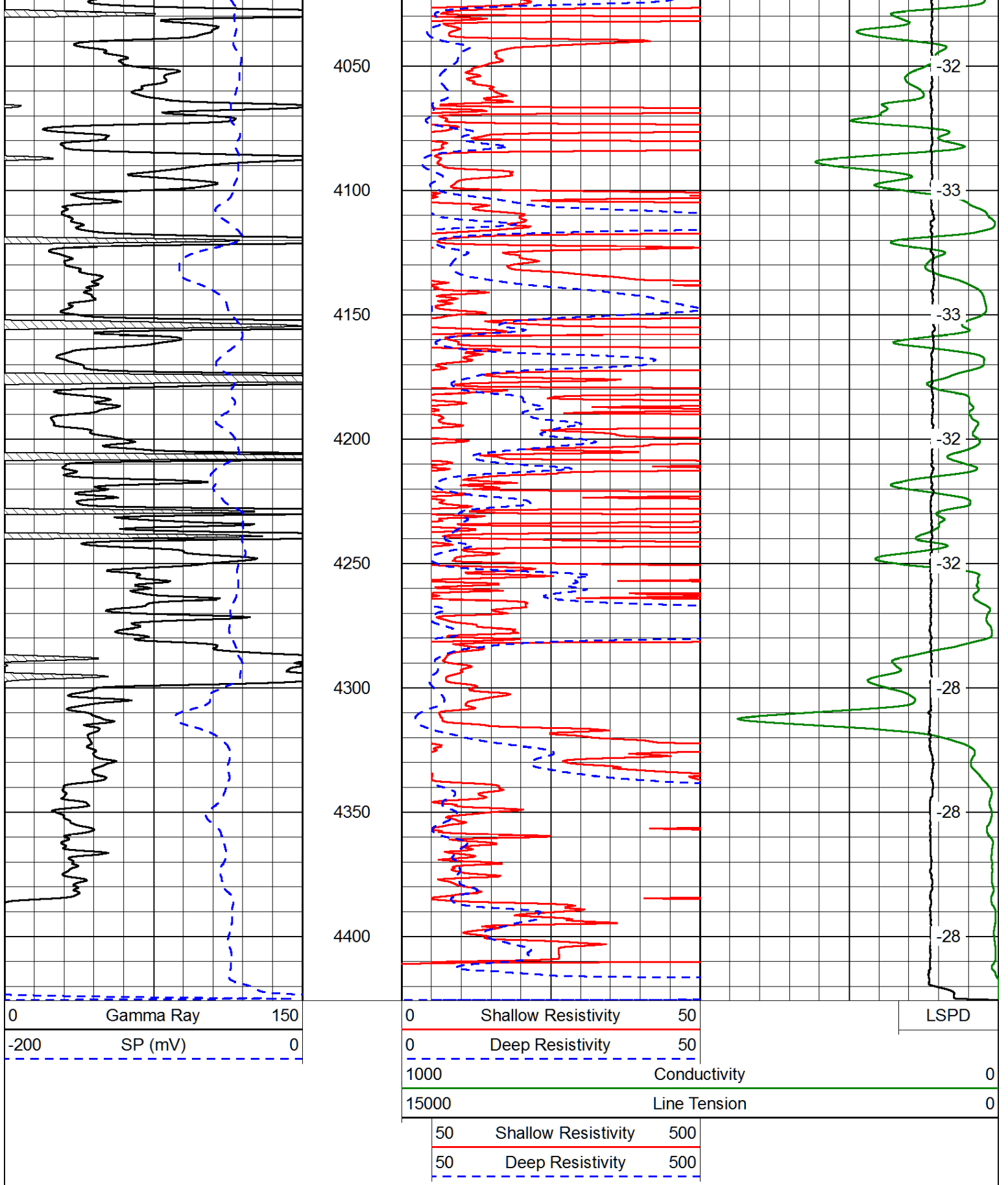












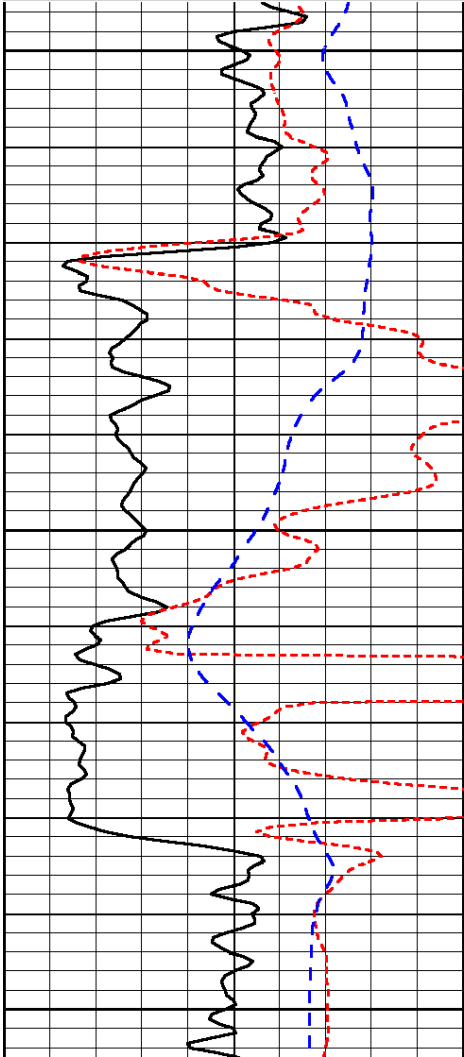
Database File: blacktea_hibbert_a_2hd.db
 Dataset Pathname: dil/btstkml
 Presentation Format: dil
 Dataset Creation: Sun Oct 12 10:10:52 2014
 Charted by: Depth in Feet scaled 1:240



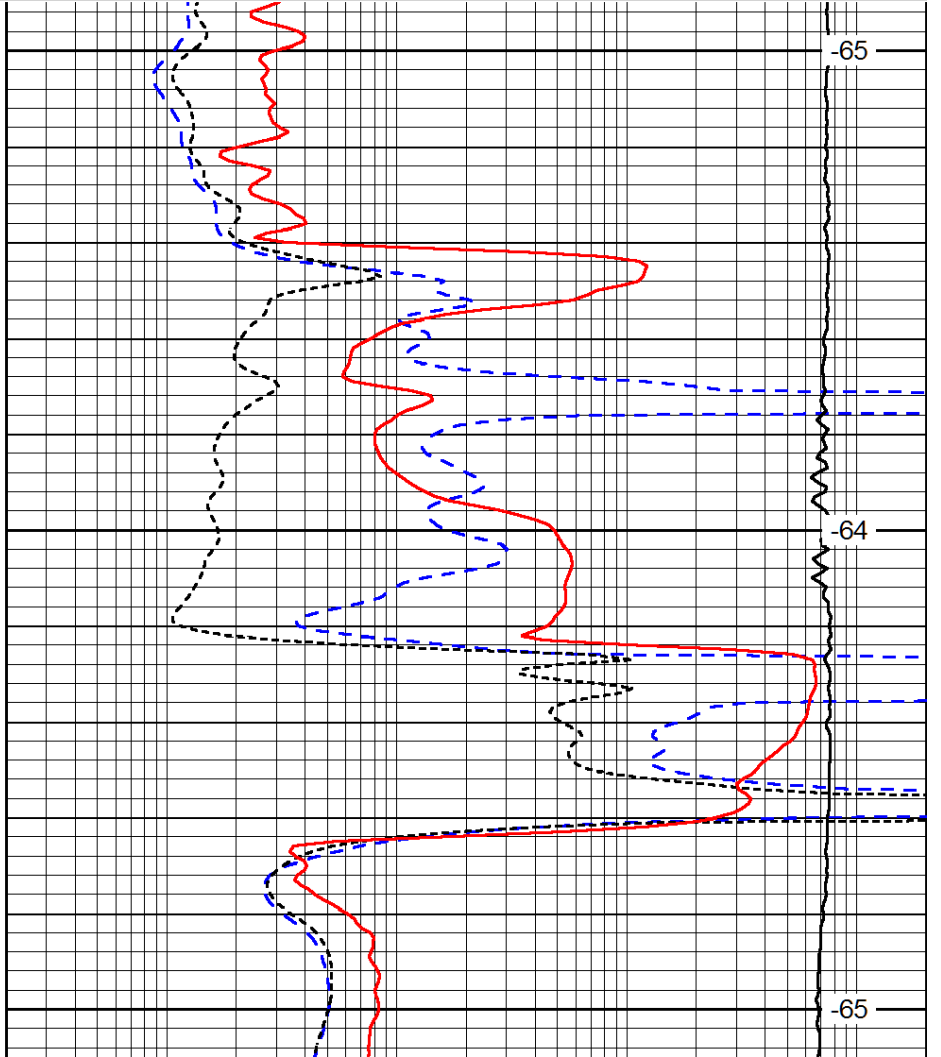
-160	RxoRt	40
-200	SP (mV)	0

0.2	Medium Resistivity	2000
0.2	Shallow Resistivity	2000
10000	Line Tension	0

LSPD



2050
2100
2150



-65
-64
-65

0	Gamma Ray	150
-160	RxoRt	40
-200	SP (mV)	0

0.2	Deep Resistivity	2000
0.2	Medium Resistivity	2000
0.2	Shallow Resistivity	2000
10000	Line Tension	0

LSPD

Database File: blacktea_hibbert_a_2hd.db
 Dataset Pathname: dil/btstkml
 Presentation Format: dil
 Dataset Creation: Sun Oct 12 10:10:52 2014
 Charted by: Depth in Feet scaled 1:240

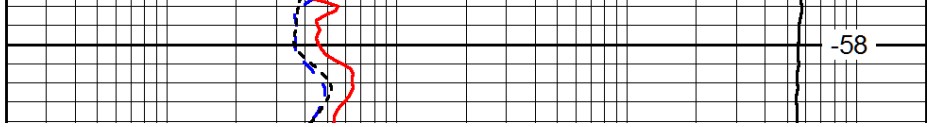
0	Gamma Ray	150
-160	RxoRt	40
-200	SP (mV)	0

0.2	Deep Resistivity	2000
0.2	Medium Resistivity	2000
0.2	Shallow Resistivity	2000
10000	Line Tension	0

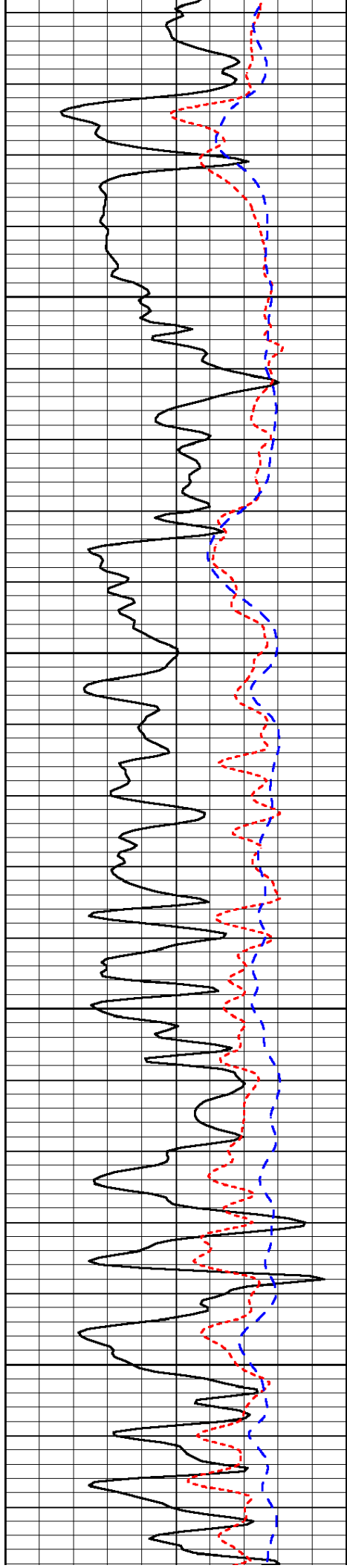
LSPD



3000



-58

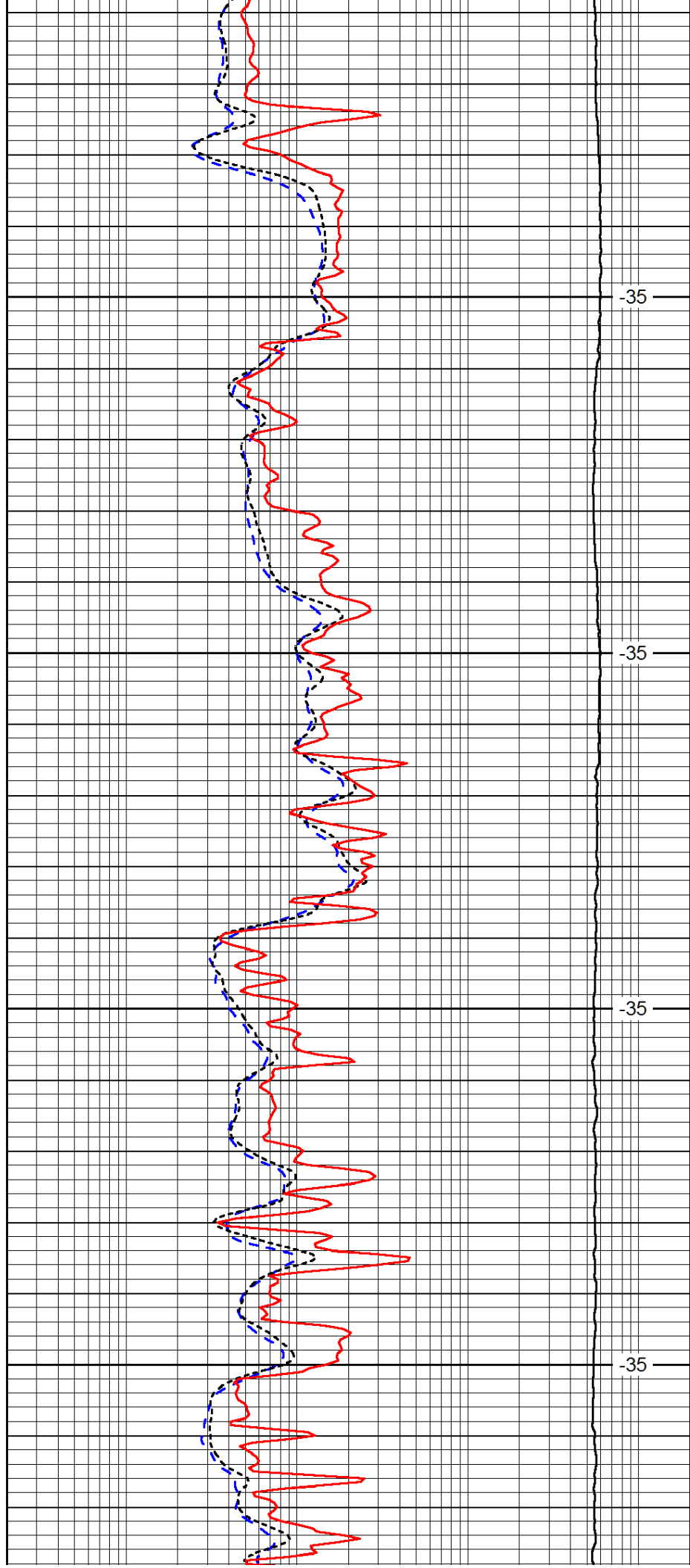


3050

3100

3150

3200

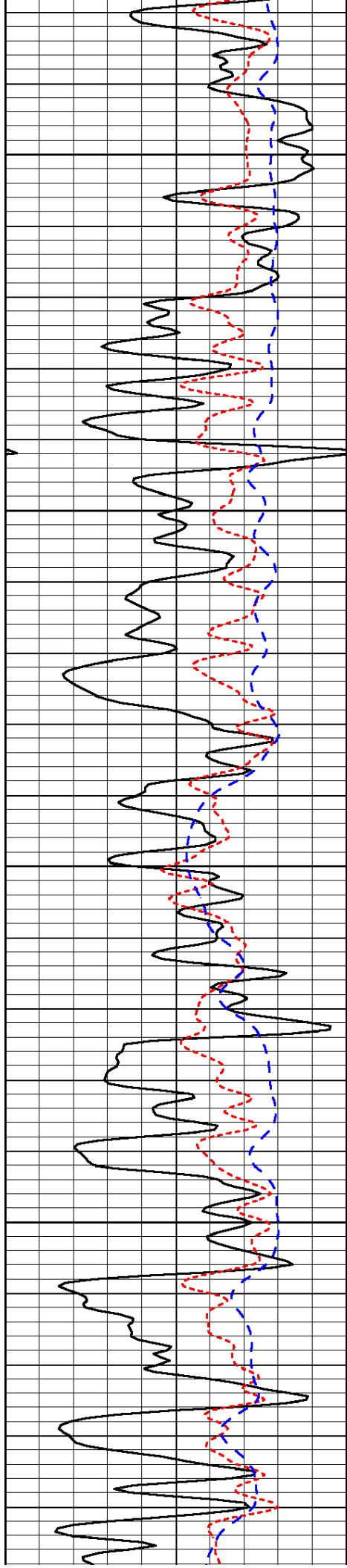


-35

-35

-35

-35

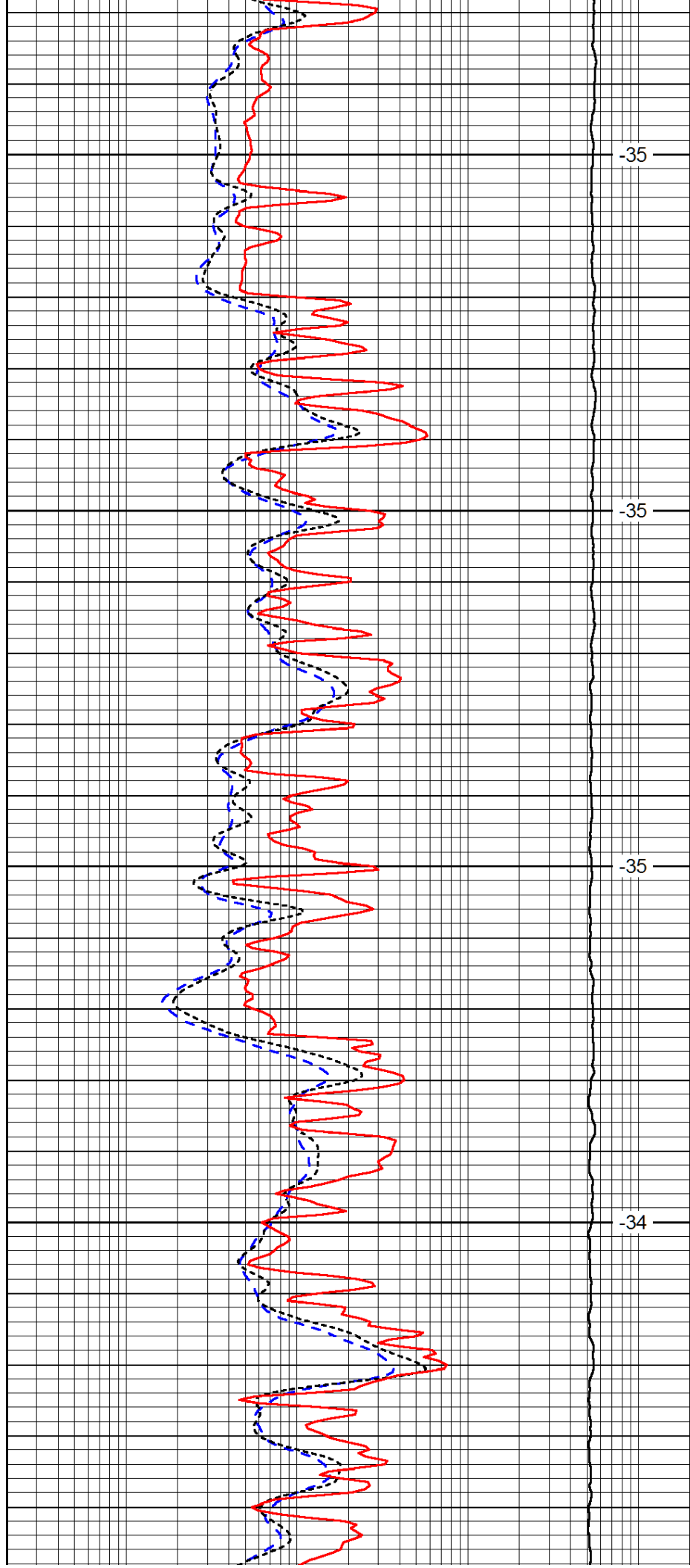


3250

3300

3350

3400

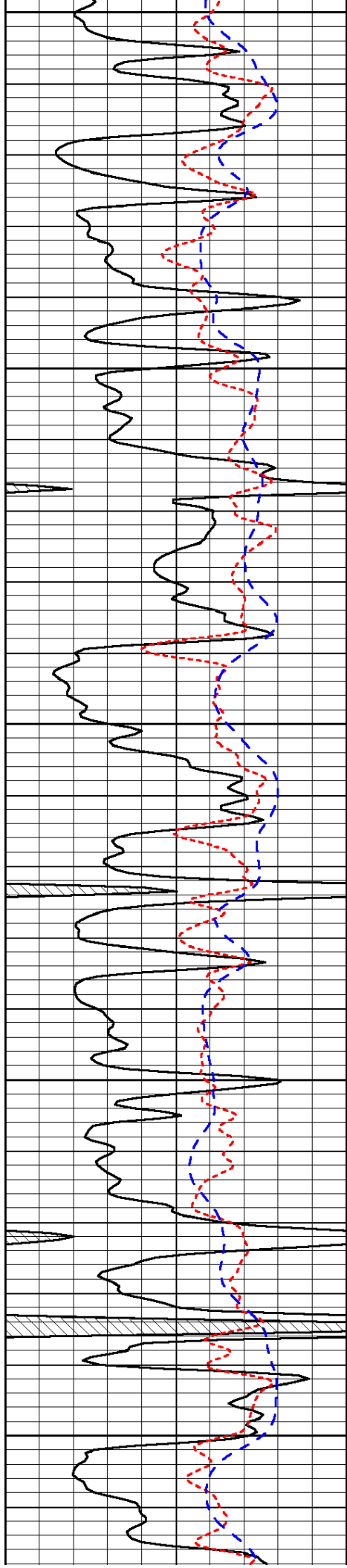


-35

-35

-35

-34



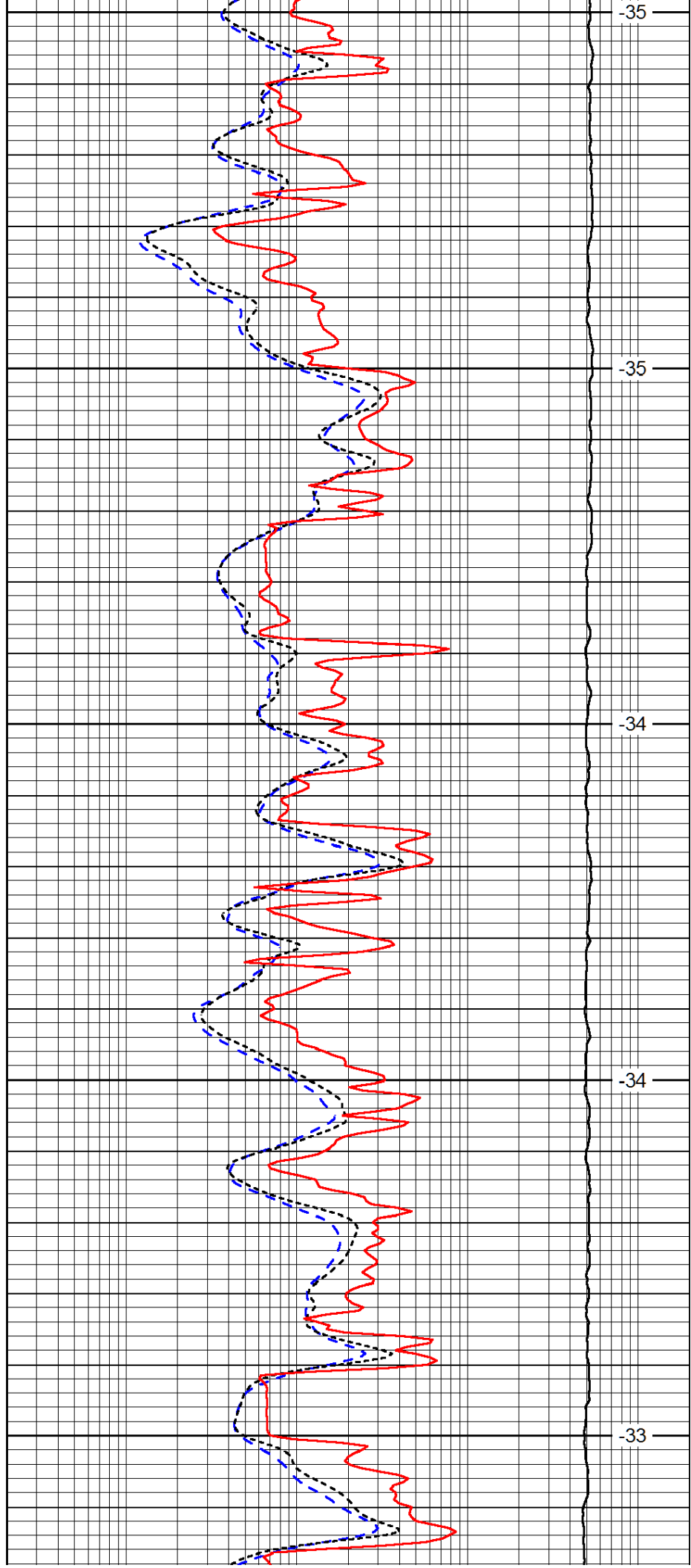
3450

3500

3550

3600

3650



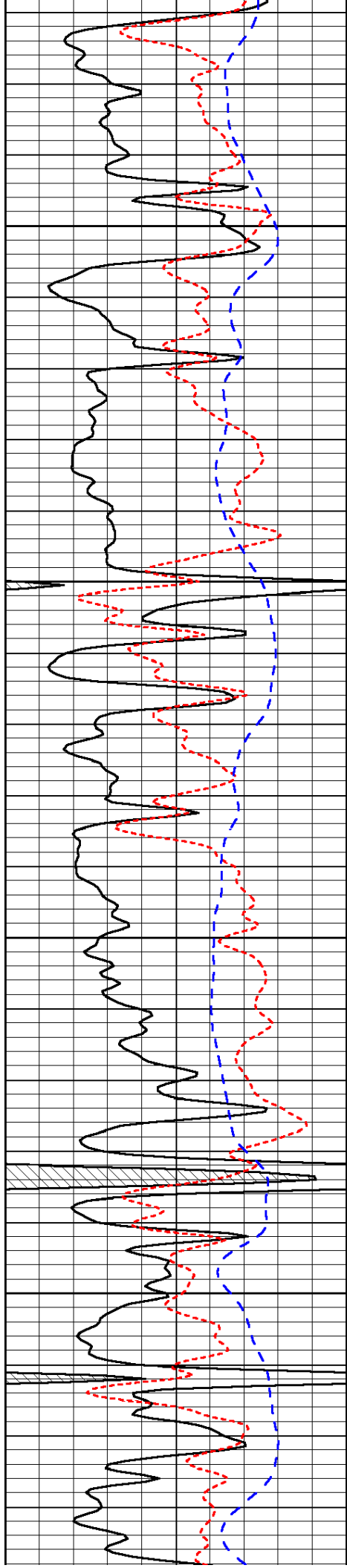
-35

-35

-34

-34

-33

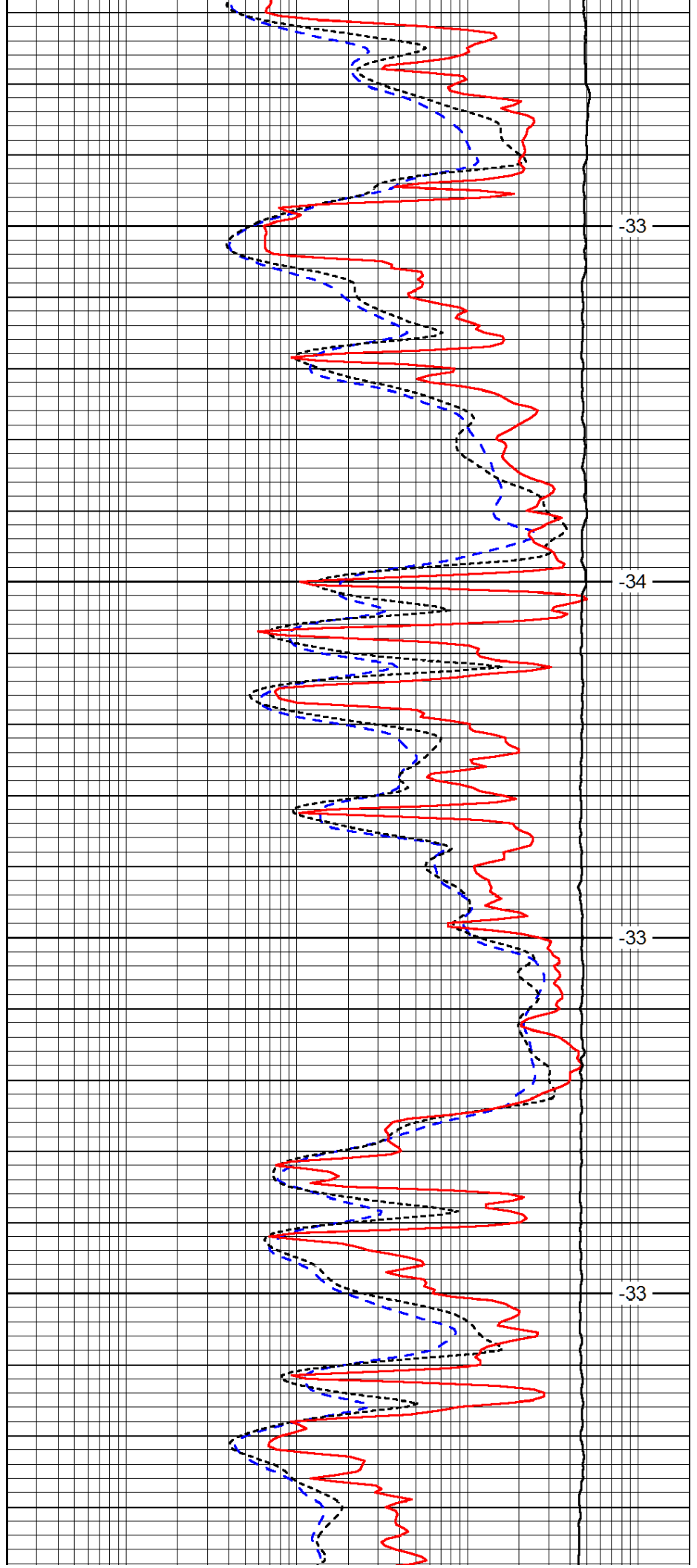


3700

3750

3800

3850

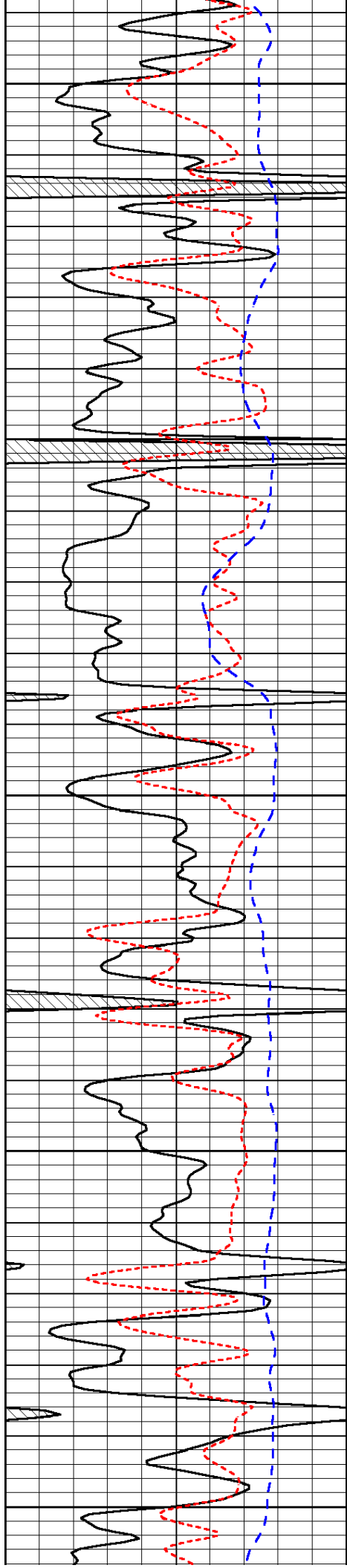


-33

-34

-33

-33



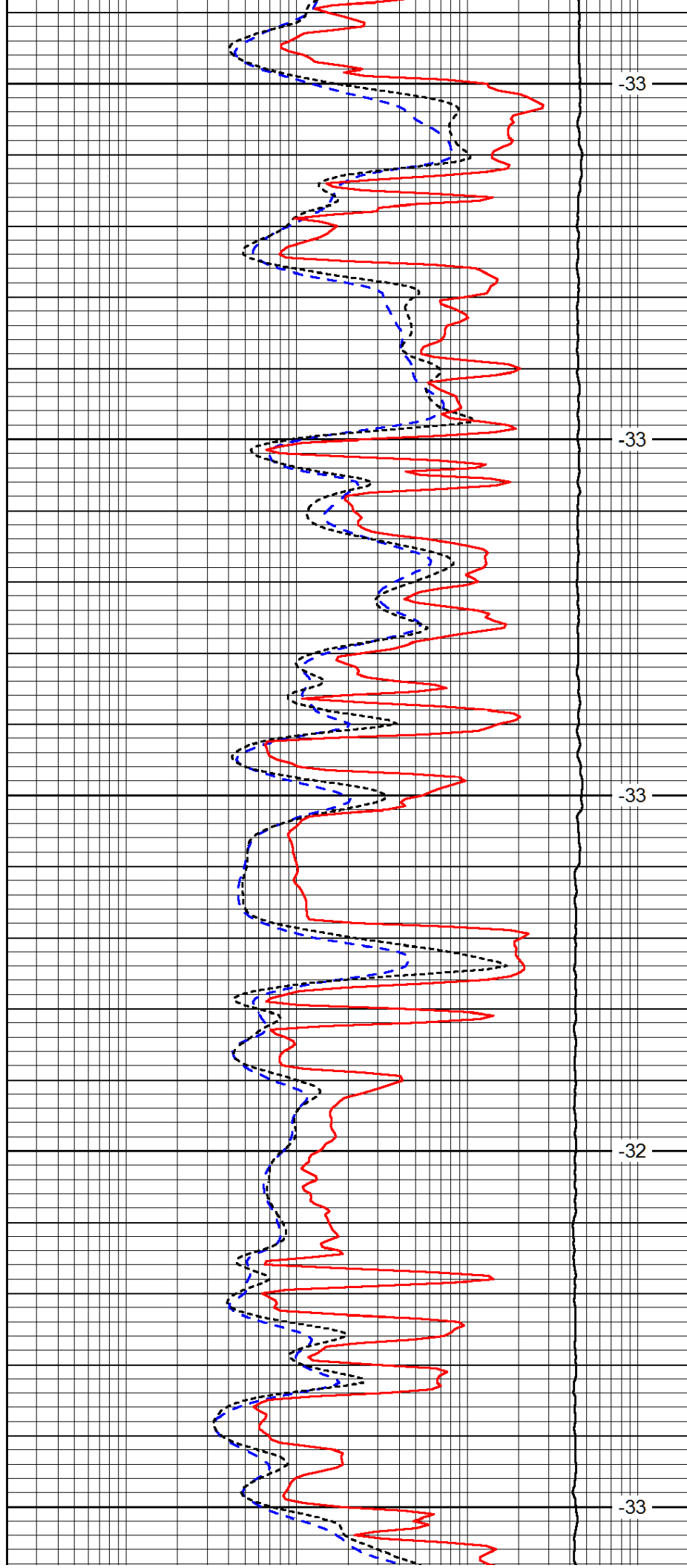
3900

3950

4000

4050

4100



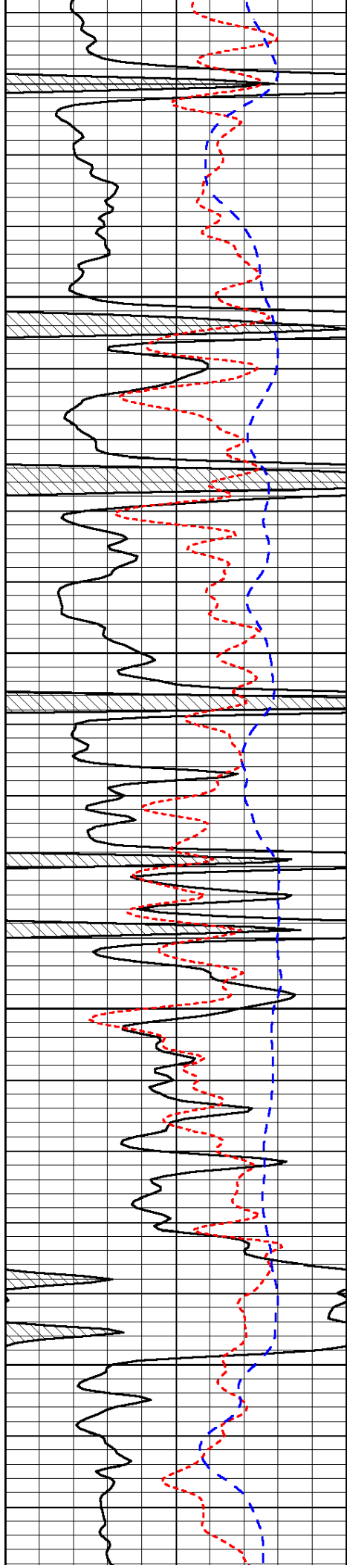
-33

-33

-33

-32

-33

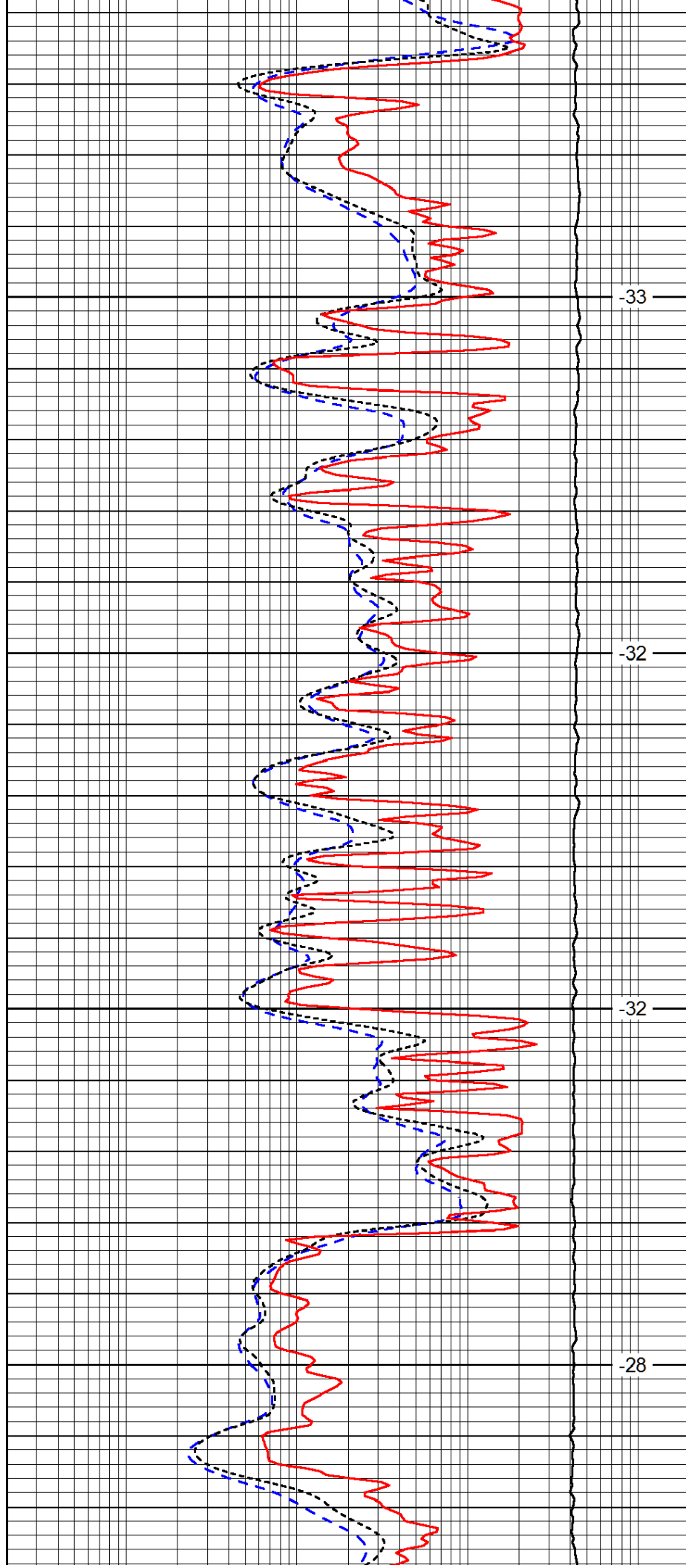


4150

4200

4250

4300

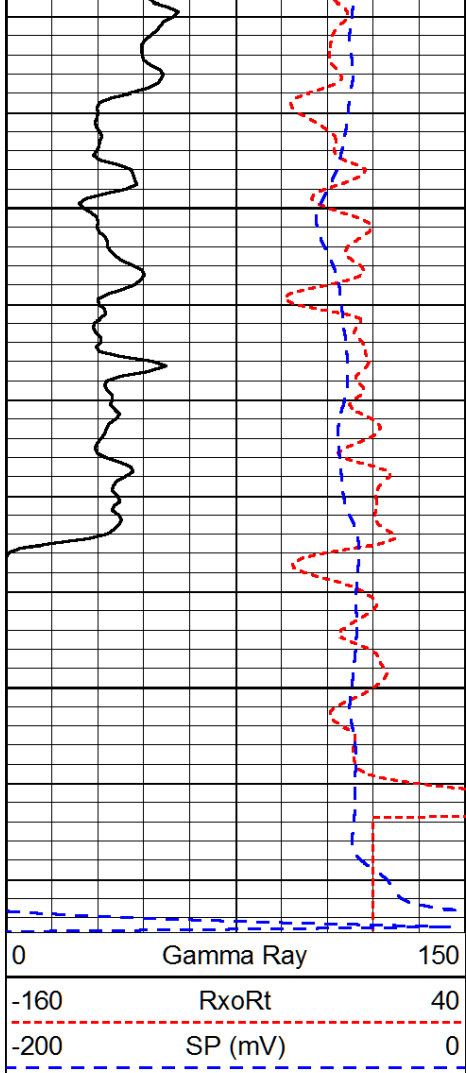


-33

-32

-32

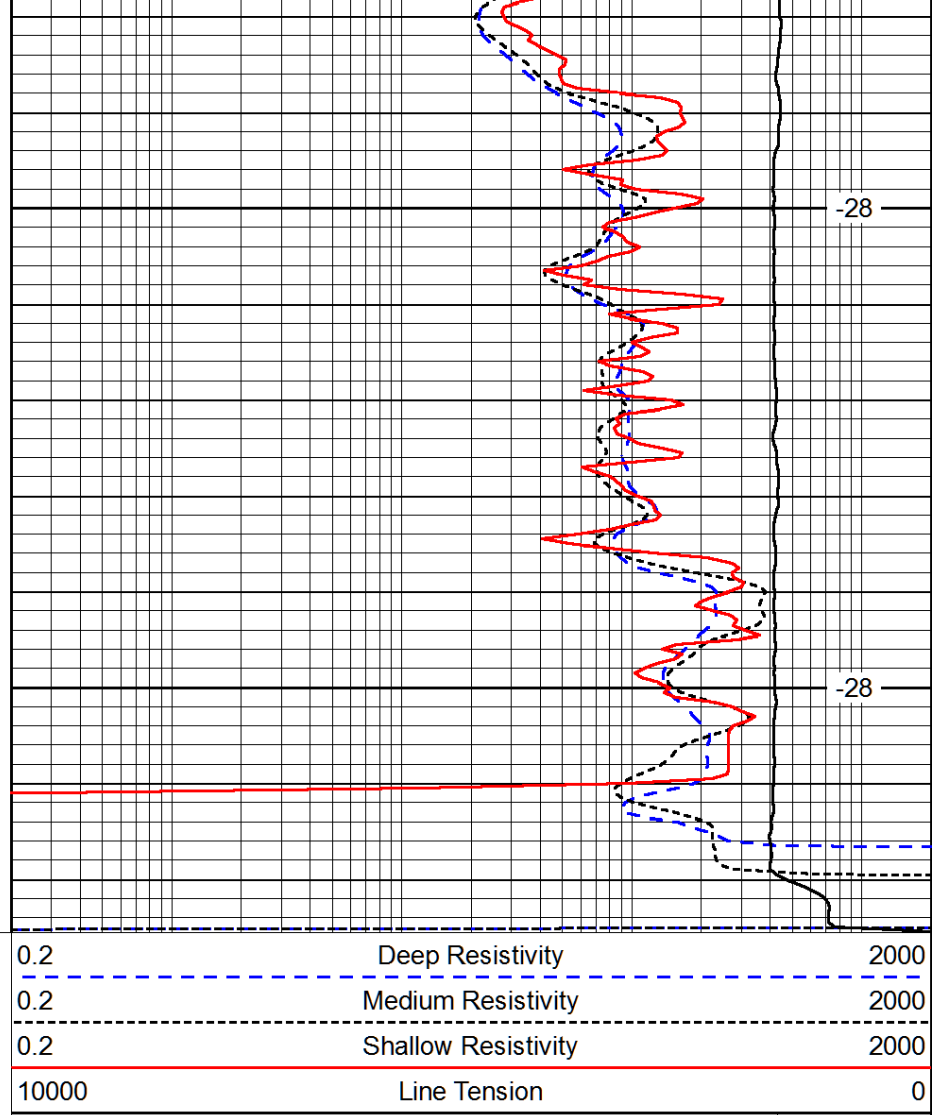
-28



0	Gamma Ray	150
-160	RxoRt	40
-200	SP (mV)	0

4350

4400



0.2	Deep Resistivity	2000
0.2	Medium Resistivity	2000
0.2	Shallow Resistivity	2000
10000	Line Tension	0

-28

-28

LSPD