



Pioneer Energy Services

Microresistivity Log

15-109-21360-00-00

API No.	Company Black Tea Oil, LLC	
	Well Rose Trust B #1	
	Field N/A	
	County Logan	State Kansas
	Location 665' FNL & 3130' FEL	
	Sec: 29	Twp: 14S Rge: 32W
	Permanent Datum Ground Level	Elevation 2682
	Log Measured From Kelly Bushing	12 Ft. Above Perm. Datum
	Drilling Measured From Frontkelly Bushing	K.B. 2694
		D.F. 2682
		G.L. 2682
		Other Services CNL/CDL DIL/BHCS

Date	10/31/2014
Run Number	Two
Depth Driller	4430
Depth Logger	4434
Bottom Logged Interval	4433
Top Log Interval	3000
Casing Driller	8.625 @ 264
Casing Logger	266
Bit Size	7.875
Type Fluid in Hole	Chemical
Salinity, ppm CL	9000
Density / Viscosity	9.1 58
pH / Fluid Loss	10.5 7.2
Source of Sample	Flowline
Rm @ Meas. Temp	0.25 @ 38
Rmf @ Meas. Temp	0.19 @ 38
Rmc @ Meas. Temp	0.34 @ 38
Source of Rmf / Rmc	Charts
Rm @ BHT	0.08 @ 120
Operating Rig Time	5 Hours
Max Rec. Temp. F	120
Equipment Number	91
Location	Hays
Recorded By	D. Schmidt
Witnessed By	Richard Thomasson

<<< Fold Here >>>

All interpretations are opinions based on inferences from electrical or other measurements and we cannot and do not guarantee the accuracy or correctness of any interpretation, and we shall not, except in the case of gross or willful negligence on our part, be liable or responsible for any loss, costs, damages, or expenses incurred or sustained by anyone resulting from any interpretation made by any of our officers, agents or employees. These interpretations are also subject to our general terms and conditions set out in our current Price Schedule.

Comments

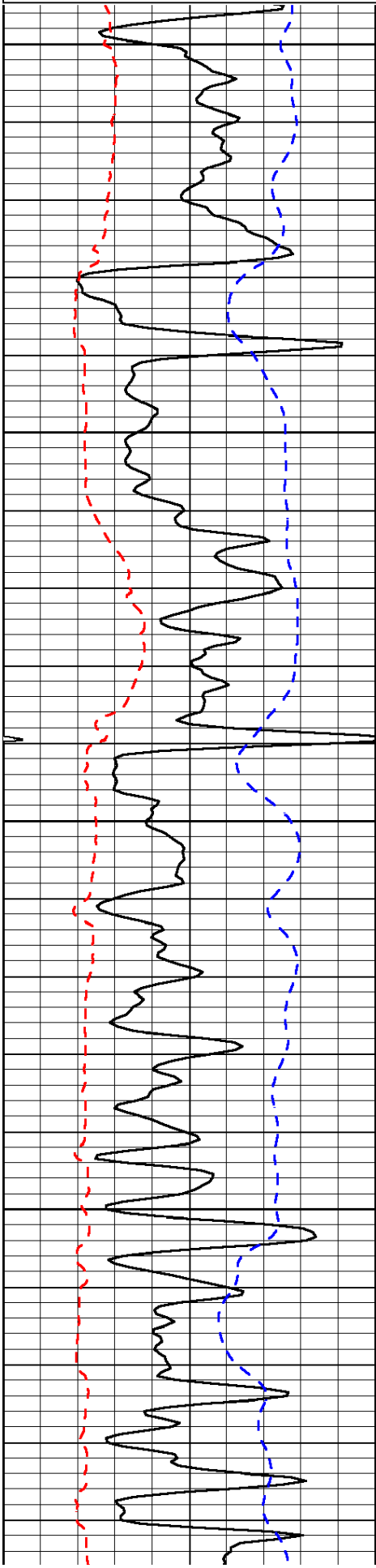
Thank you for using Pioneer Energy Services
 www.pioneeres.com
 785 625 3858
 Oakley,
 South to Gold Rd, 2 1/4 West,
 North into about 2 miles

Database File: c:\warrior\data\black tea_rose trust b #1\black tea_rose trust_b_1hd.db
 Dataset Pathname: dil/btstkml
 Presentation Format: micro
 Dataset Creation: Fri Oct 31 08:01:25 2014
 Charted by: Depth in Feet scaled 1:240

0	Gamma Ray	150
6	MCAL (GAPI)	16
-200	SP (mV)	0

0	Micro Inverse 1 X 1	40
0	Micro Normal 2"	40
15000	Line Weight	0

LSPD

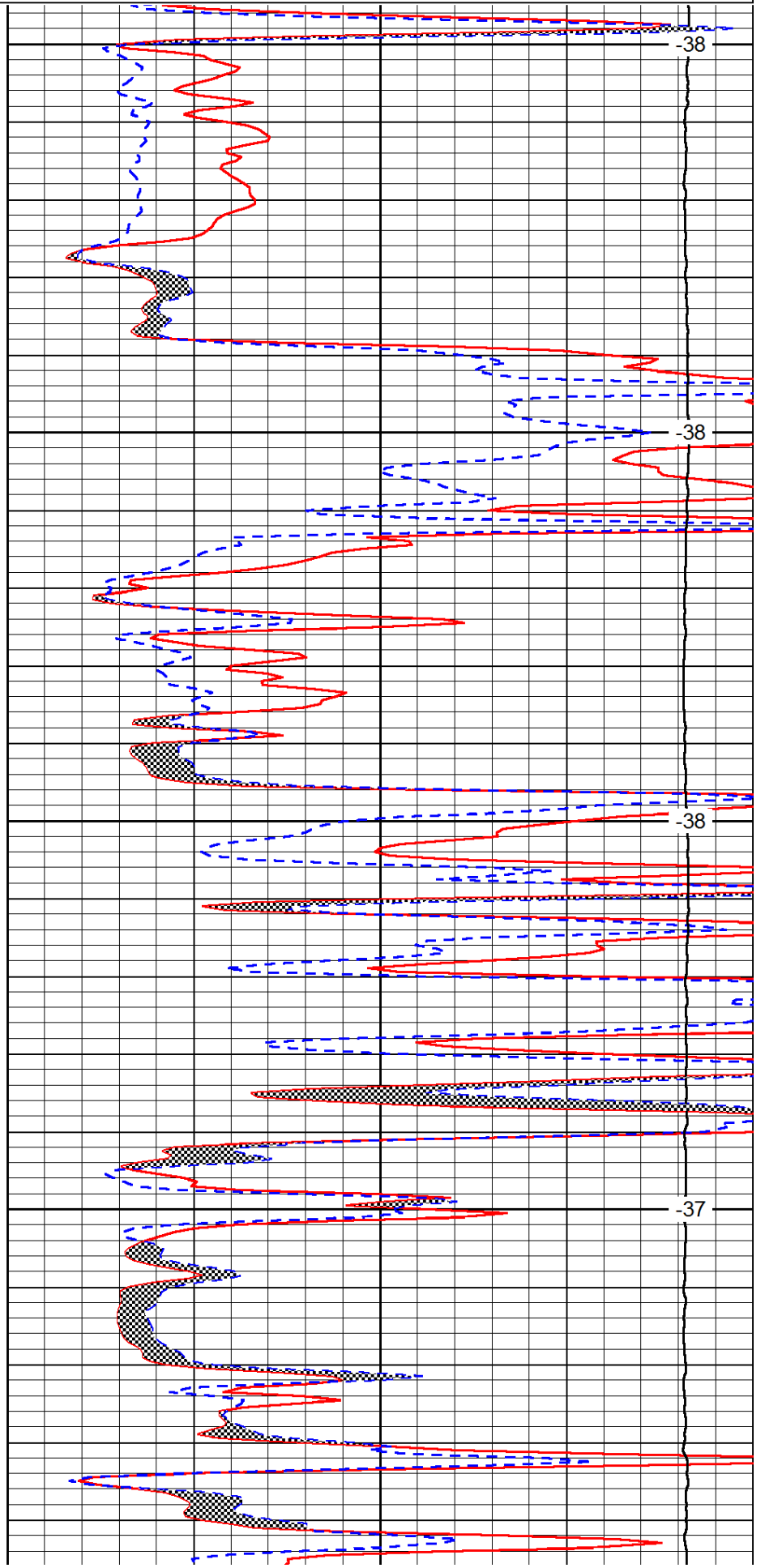


3000

3050

3100

3150

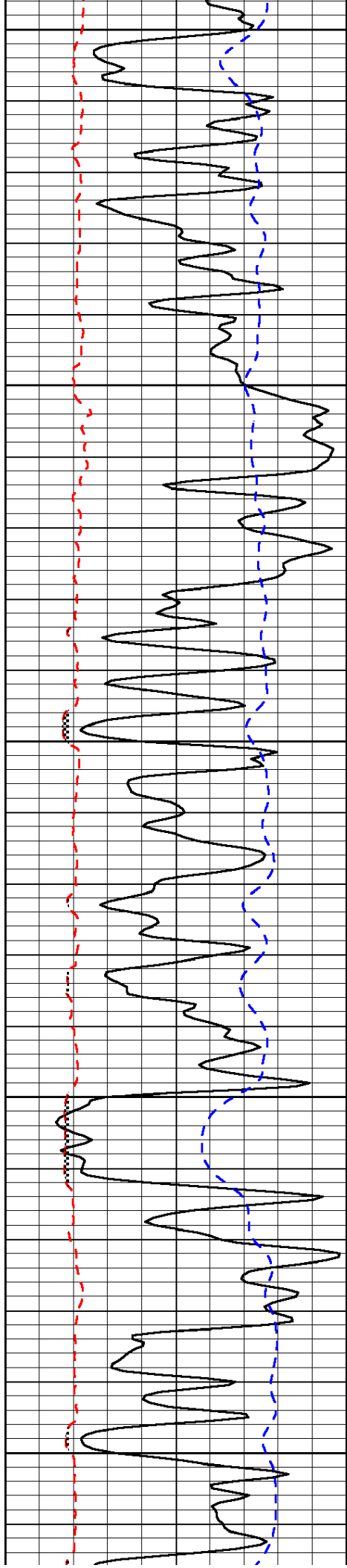


-38

-38

-38

-37



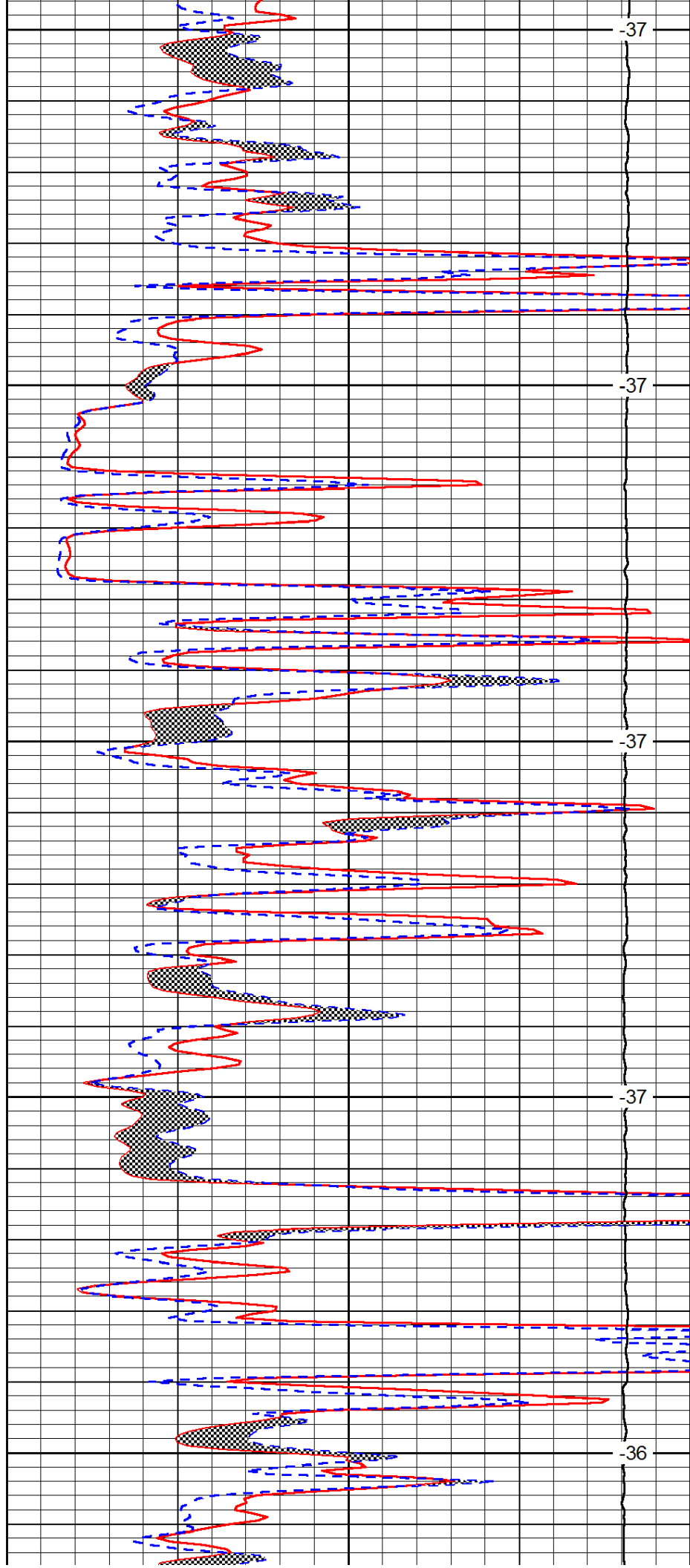
3200

3250

3300

3350

3400



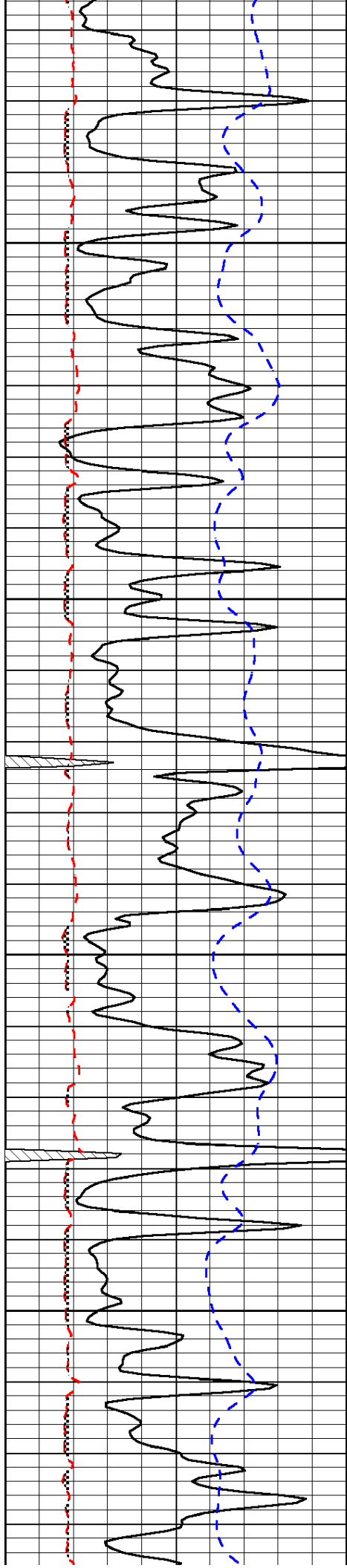
-37

-37

-37

-37

-36

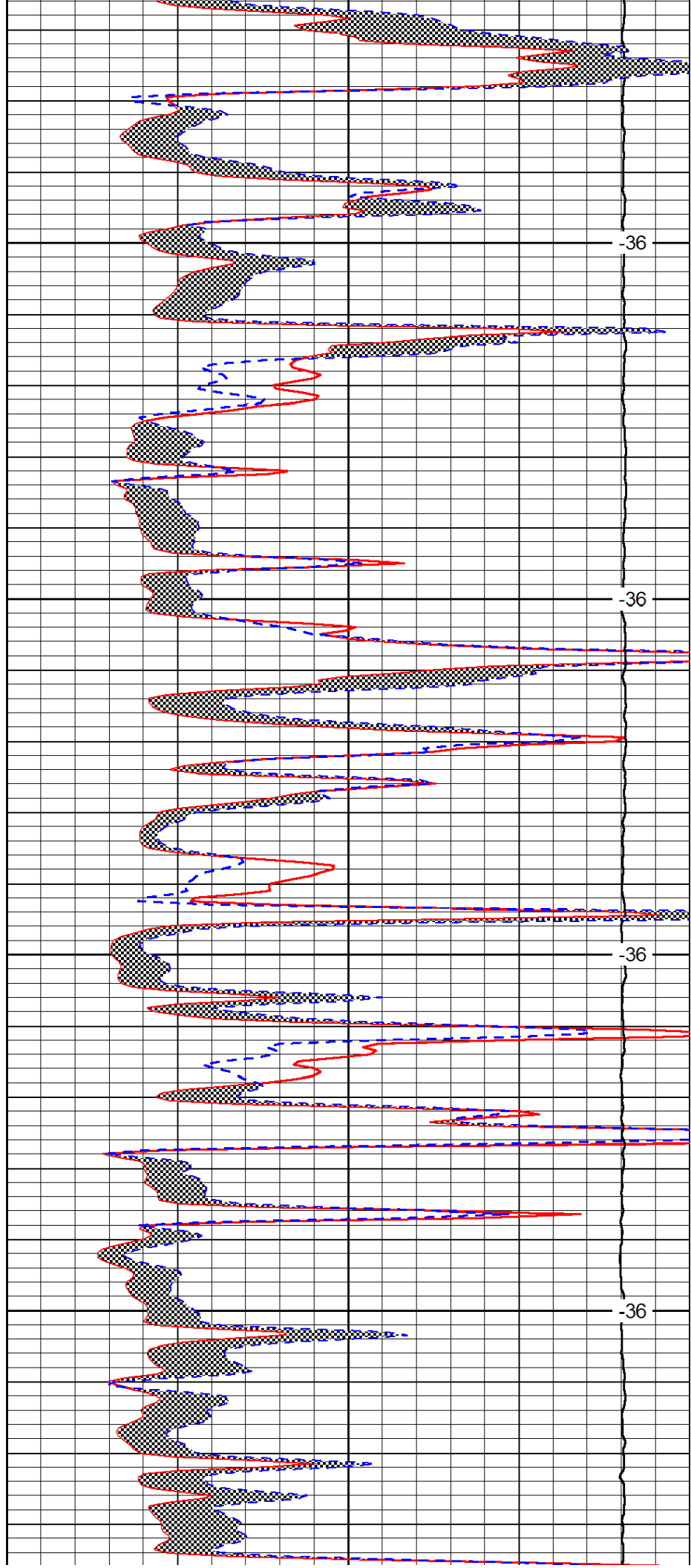


3450

3500

3550

3600

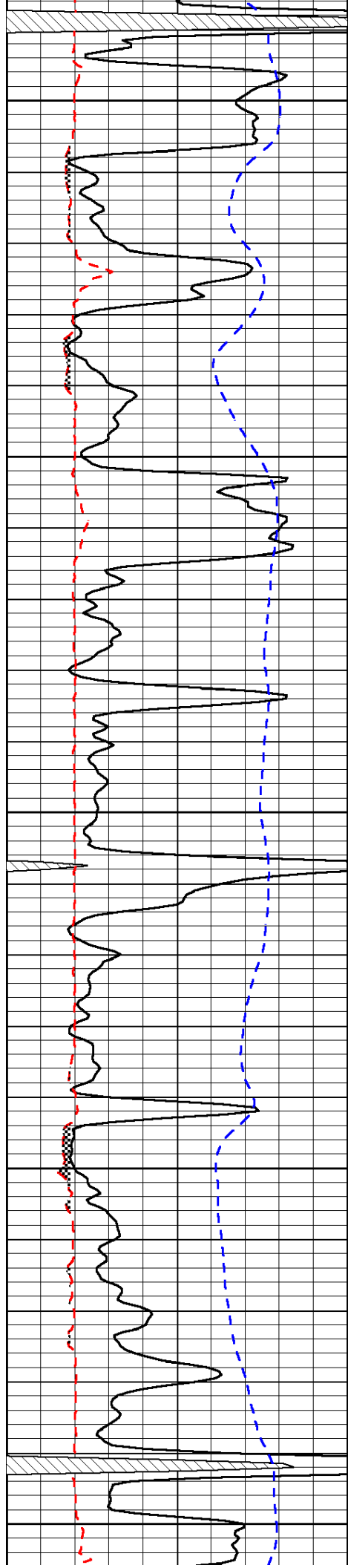


-36

-36

-36

-36



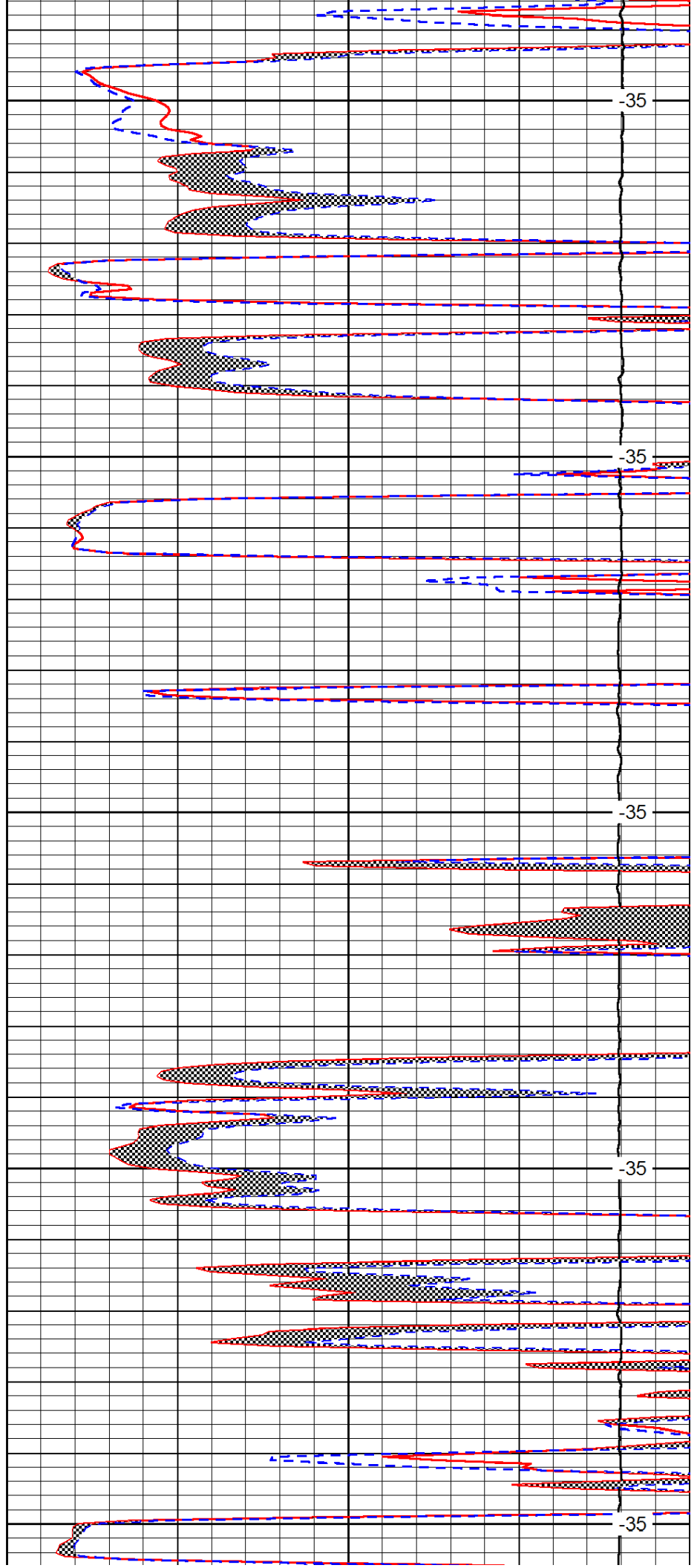
3650

3700

3750

3800

3850



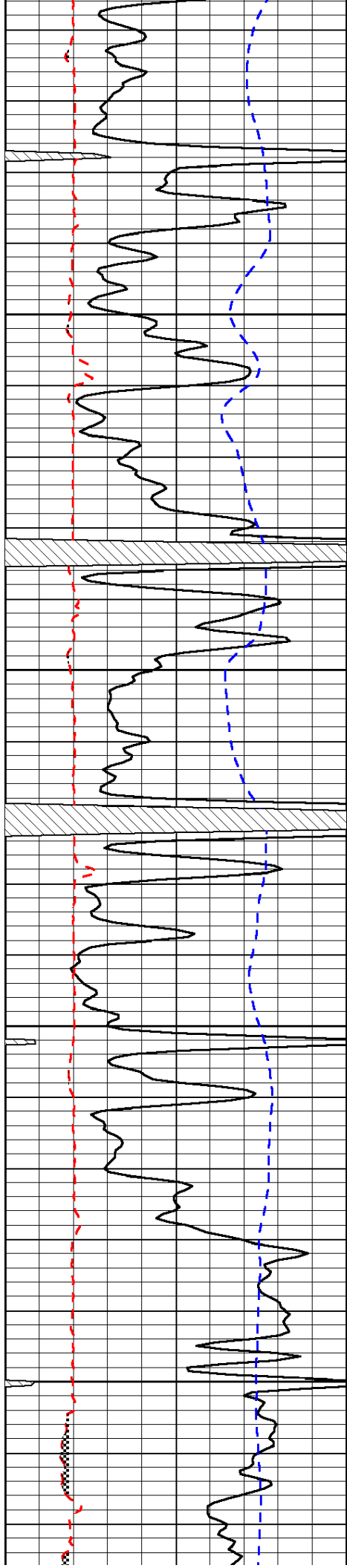
-35

-35

-35

-35

-35

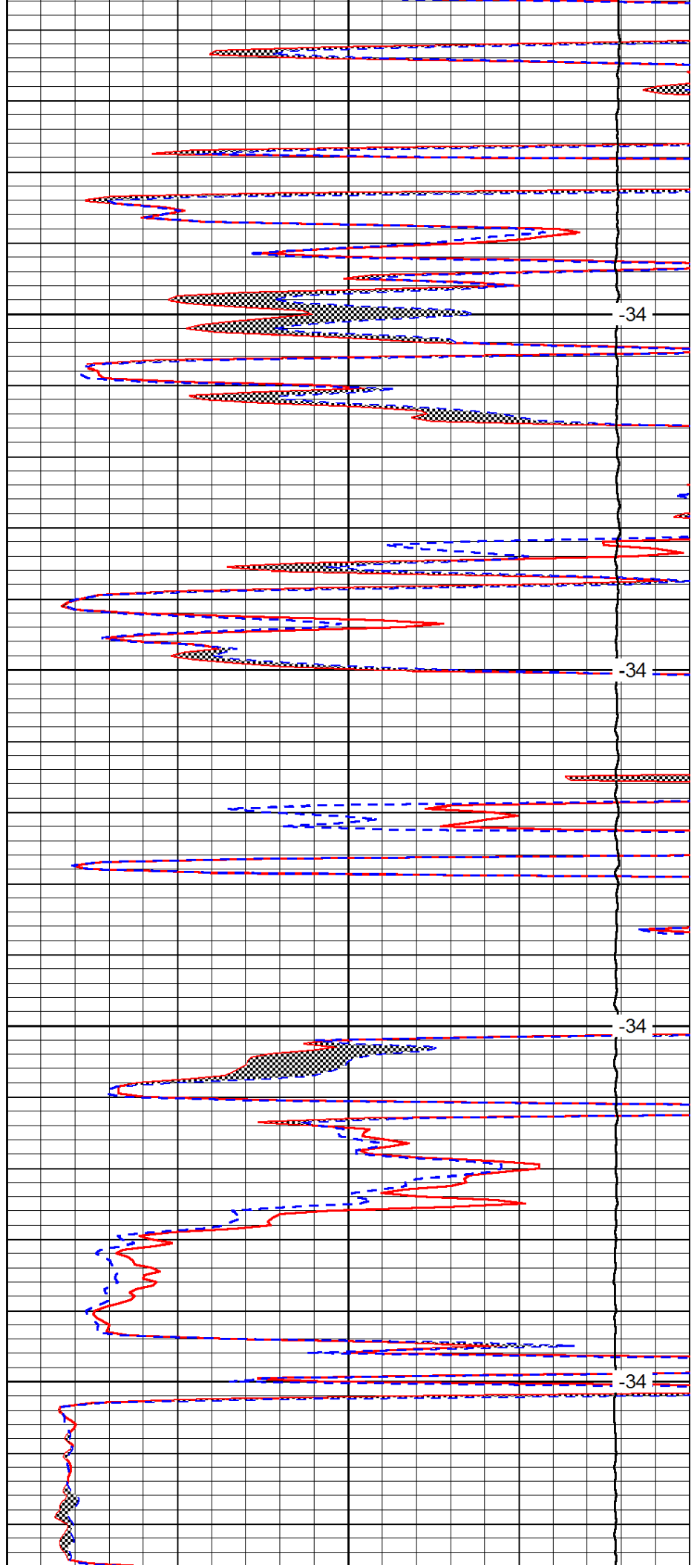


3900

3950

4000

4050

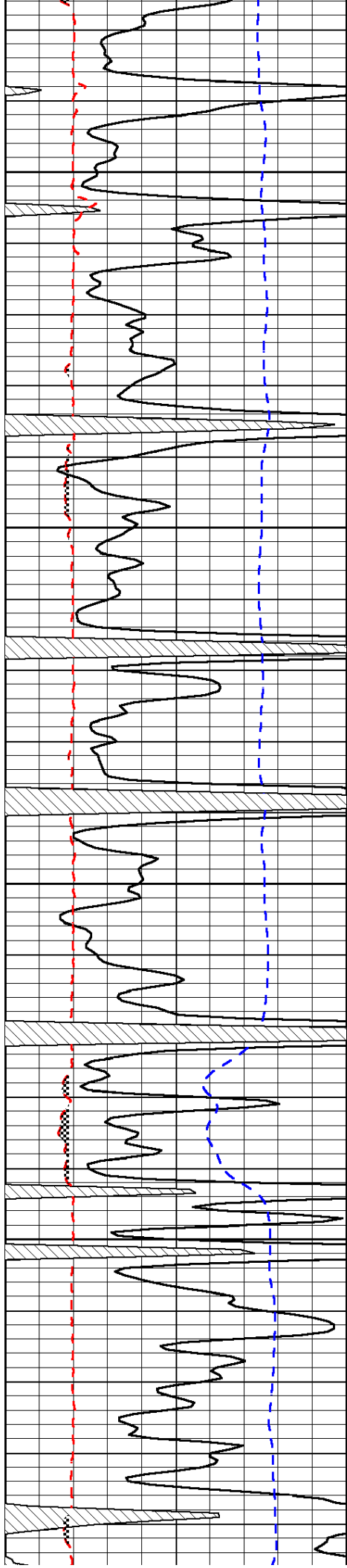


-34

-34

-34

-34

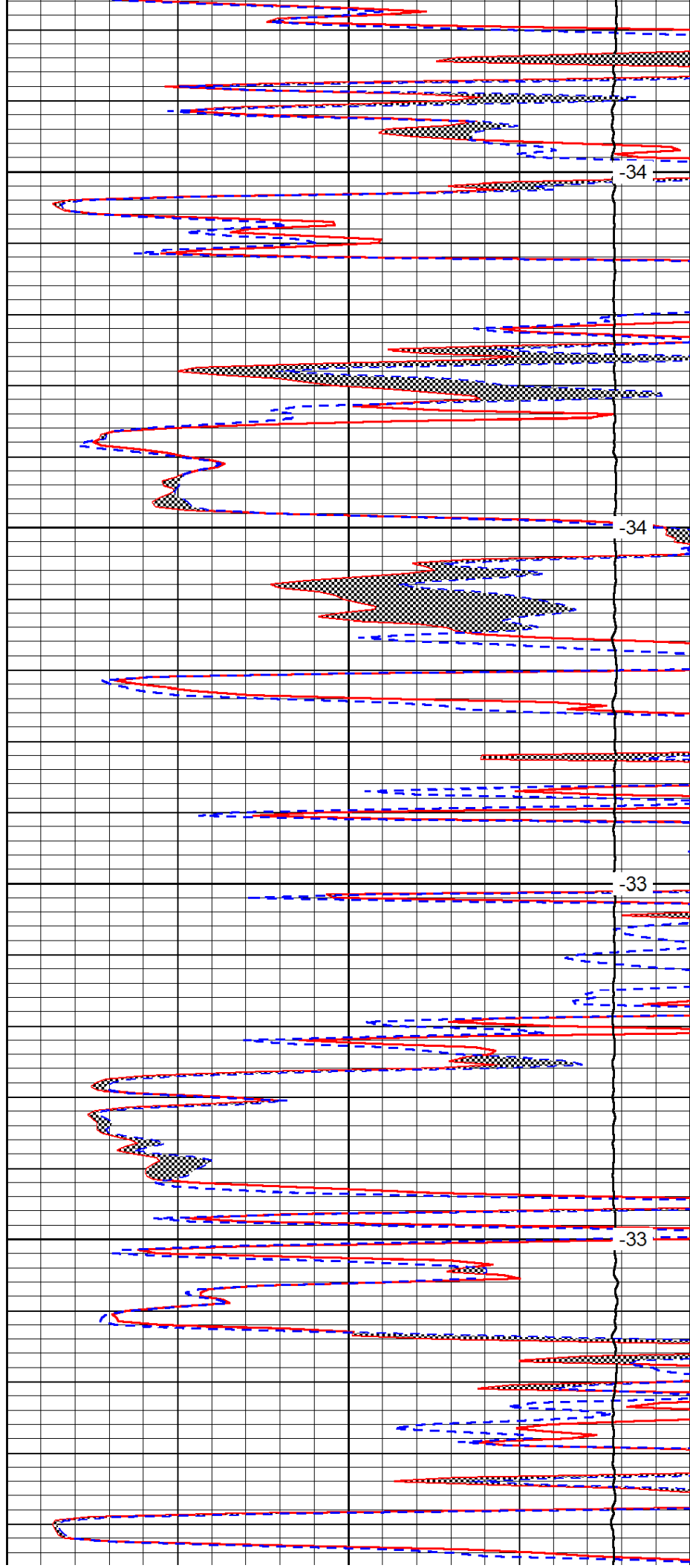


4100

4150

4200

4250

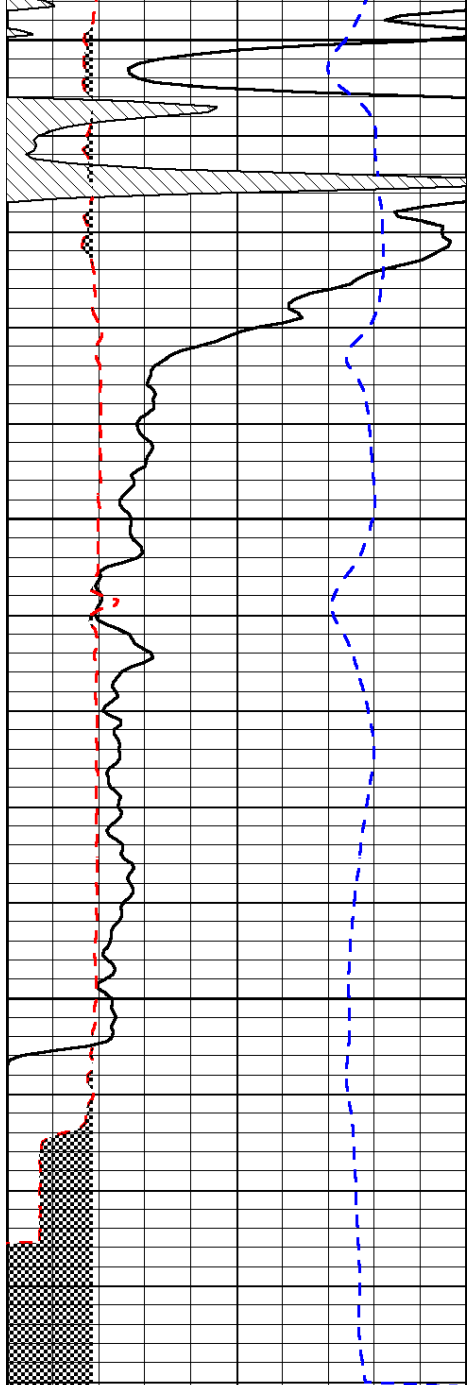


-34

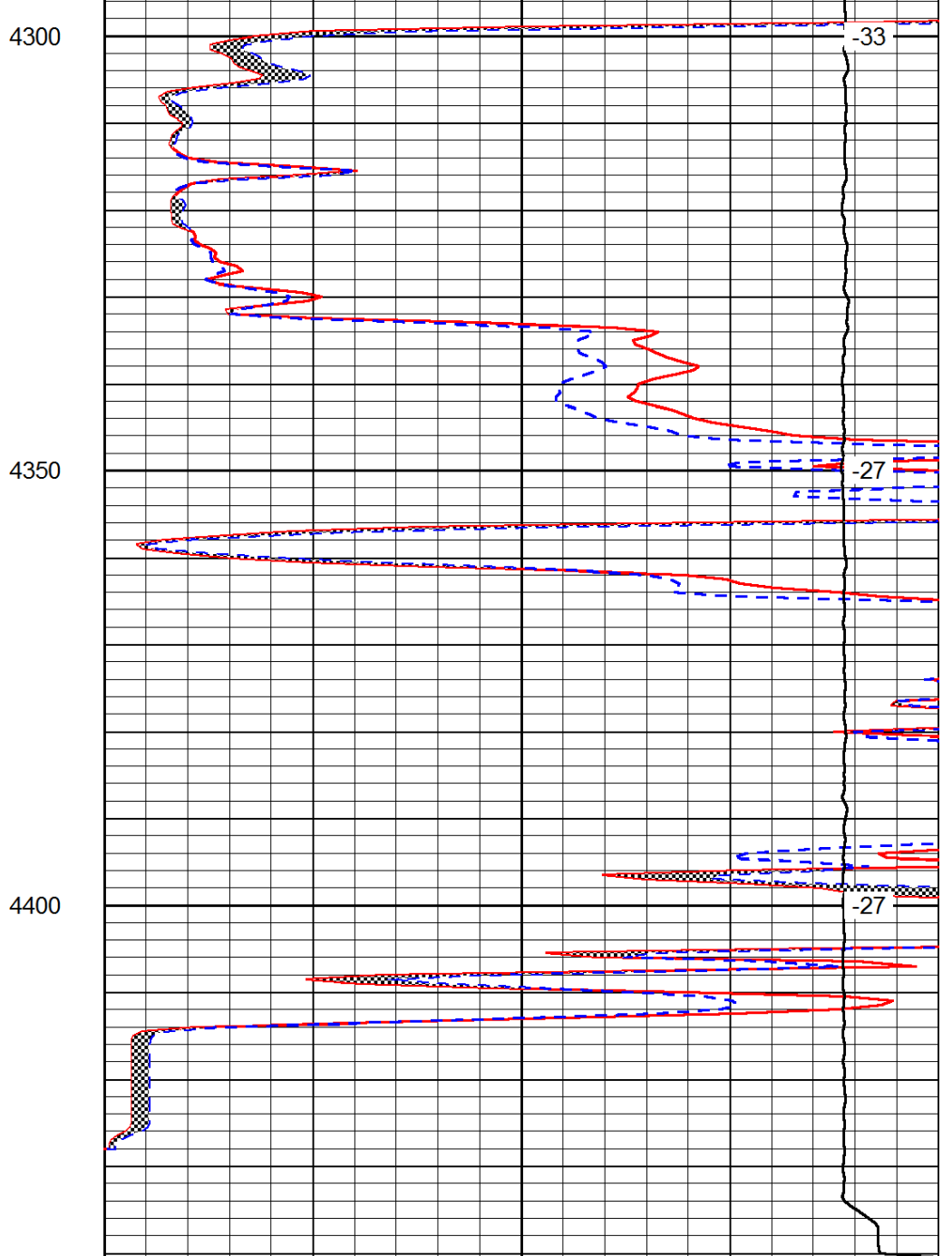
-34

-33

-33



0	Gamma Ray	150
6	MCAL (GAPI)	16
-200	SP (mV)	0



0	Micro Inverse 1 X 1	40
0	Micro Normal 2''	40
15000	Line Weight	0

LSPD